

## A New Day for Our Waterfront

SugarHouse Casino would be located north of Society Hill near Northern Liberties and Fishtown.

Foxwoods Casino would be located just south of Society Hill, directly across from the Riverview Movie Theaters and the adjacent residential neighborhood of Pennsport.

See page 5 for more about politics and casinos.

A breath of fresh air has blown into the city with the beginning of Michael Nutter's mayoral administration. In a recent interview on the topic of the two proposed waterfront casinos — reported by PlanPhilly's Kellie Patrick Gates — Mayor Nutter stated, "As far as I'm concerned, we're back at Square One." In fact, the Mayor has ordered a complete review of all casino-related decisions made by the previous administration, and he intends his team to have a say on everything about them — from their sited locations to their proposed design.

Planning and zoning were important themes in Nutter's mayoral campaign, and upon taking office he immediately began implementing his vision for the city. For example, he has already appointed a new Planning Commission and created a new post — Deputy Mayor for Planning and Economic Development — naming Andrew Altman to this post, as well as appointing Altman to be the city's Commerce Director. According to the Mayor, "Philadelphia's Planning Commission used to be considered one of the best in the country. I want to return us to that level." In another example of the winds of change,

the Mayor appointed a new Chair to the city's Zoning Board of Appeal, Susan Jaffe, a former long-time Society Hill resident who served on that Board for several years.

To illustrate that Mayor Nutter means business about rethinking casino planning, he recently withdrew a permit that was issued prior to the time he took office giving SugarHouse Casino the right to build on submerged lands of the Delaware River — known as "riparian rights." Residents who have worked hard over the past year to educate public officials about the negative effects of placing casinos just blocks from homes, schools and houses of worship are now encouraged by the Mayor's thoughtful action.

However, a somewhat troubling development is the introduction of legislation by District Councilman Frank DiCicco that would give Foxwoods its required zoning for a Commercial Entertainment District (CED). The Councilman said that his introduction of CED legislation was necessary in order to preempt the Pennsylvania Supreme Court from giving Foxwoods its zoning, as it did in the SugarHouse case because the Court found that "City Council intentionally and inappropriately delayed acting." Attached to the zoning bill are eight conditions that Foxwoods must fulfill and for which hearings began on February 25th. In response, State Representative Michael O'Brien's Chief of Staff, Mary Isaacson, said: "I think when [Foxwoods officials] see what is the starting point of what is required to even consider that site, they may think twice and move to another site that's more viable."

At press time, leaders from the Philadelphia Neighborhood Alliance — 27 groups united to re-site casinos away from residential communities — are working on their response to Councilman DiCicco's legislation in preparation for these hearings. It remains to be seen what the full impact of this legislation will be, but coalition members say: "We remain absolutely committed to finding more appropriate locations for both Foxwoods and SugarHouse."

WED.

March  
19

### MARK YOUR CALENDAR

Society Hill Civic Association Meetings  
Wednesday, March 19, 2008

**Auditorium, Pennsylvania Hospital**  
**800 Spruce Street**

**6:00 p.m. Board of Directors Meeting**  
All SHCA members are welcome.

**7:00 p.m. Meet & Greet Your Neighbors**

**7:30 p.m. General Membership Meeting**  
All neighborhood residents are invited.

**Presentation by Nicky Uy of the Food Trust**  
Learn about this organization which works to ensure access to nutritious food for everyone and organizes the Head House Farmers' Market we now enjoy. See page 12 for more information.



**PHILADELPHIA GARDEN INC.**  
Toni Ann Flanigan

662 West Johnson Street  
Philadelphia, Pa 19144  
215 951 9193  
philadelphiagardens.com



**707**

---

**RESTAURANT & BAR**

Private dining room and Philly's best outdoor café.

NEW AMERICAN BISTRO

---

RESTAURANT • BAR • LOUNGE

215-922-7770 / 707 chestnut st. phila. pa 19106 / www.707restaurant.com



SOCIETY HILL

*Reporter*

**Managing Editor**

Bernice T. Hamel

**Co-Editors—March/April 2008**

Bernice Hamel  
Sandra Rothman

**Editorial Board**

Marilyn Appel  
Lenore Hardy  
Lorna Katz Lawson  
Carole Le Faivre-Rochester  
Rosanne Loesch  
Ruth Sachs  
Ruth Smith

**Columnists**

Marilyn Appel  
Jane Biberman  
Richard de Wyngaert  
Martha Levine  
Steven Weixler  
David Woods

**Contributors**

Janine & Barry Arkles  
Stanhope Browne  
Tania Rorke  
Harry K. Schwartz  
Wally Wing

**Graphic Design**

Judy Lamirand  
judy@parallel-design.com

**Press Release Liaison**

Sandy Rothman  
315-C S. 2nd Street  
Philadelphia, PA 19106  
email: norfad@aol.com  
tel: 267-671-0554

**Advertising Manager**

Matthew DeJulio  
mattdejulio@aol.com

**Society Hill**

**Civic Association**

P.O. Box 63503  
Philadelphia, PA 19147  
tel: 215-629-1288  
fax: 215-629-9914

**Submission Deadlines**

May/June issue  
Advertising: April 1  
Editorial: April 10

**Website**

www.societyhillcivic.org

**Submissions**

We want to hear from you. Our goal is to print news of interest to Society Hillers — happenings in and around our community for residents, business people and professionals. Direct your editorial submissions and/or queries to Bernice Hamel via fax at 215-925-0877 or email bernicehamel@comcast.net. To publicize an event, submit all press releases directly to Sandy Rothman. (See contact information above.)

Materials must be submitted in writing — via mail, email, or fax — and must include the name of a contact person. Edited submissions will be considered for publication if the subject matter is community-related and if space allows. Otherwise, upcoming events of interest may be listed in the Community Calendar. Letters to the Editors will be considered for publication only if signed and the writer provides contact information.

**Wireless Zone®**

**wireless**  
**ZONE®**

LEATHER CASES,  
CAR CHARGERS,  
INTERNET  
CONNECTIVITY

  
Authorized Retailer

**322 South Street • 215-923-8255**

---

**P R E S I D E N T ' S M E S S A G E**


---

RICHARD DE WYNGAERT, SHCA PRESIDENT

## Welcoming Diverse Points of View

Society Hill's history is rich and complex. Our community, like the city of which we are a vital part, can best be defined and understood by examining its many cycles. There have been periods of great prosperity and unbridled optimism, as well as periods of uncertainty and fear. There have been times marked by creative brilliance and times slowed by resignation and resistance to change. As a community, Society Hill continues to face challenges, from within and from without.

Amid a recent cycle characterized by many positive trends, we have accomplished much of which we are rightly proud. Residents of Society Hill vigilantly nurture and defend her greenways, her 18th- and 19th-century architecture, and her livability. These, as well as other things, are Society Hill's fundamental pillars. Our essence, what makes us what we are, provides a compass with which to assess the appropriateness of prospective development and large-scale projects that have the capacity to dramatically shape and perhaps alter the spirit of our community.

We are continually pulled in multiple directions, and occasionally this pull results in deep division. In addressing the issues and divisions with which our community is currently faced, we make difficult decisions. These decisions and the positions we adopt do more than further and protect the vision which renders Society Hill special. When we say "yes" to a particular vision for Society Hill, we say "no" to another. On deliberating the merits of any proposal, our community needs to be cognizant of the possibilities for which we are either advocating or foreclosing.

As President of SHCA, I try to ensure good process. We look to our members, our community, our zoning code, precedent, our committees, and our Board of Directors. These sources provide, without question, wonderful and mostly sound counsel. However, if the answers are truly going to be right, as opposed to simply self-affirming and "maybe right," our association needs a fundamentally broader base: we need to more deeply inform our positions. The importance of

additional depth cannot be overstated. We need to engage more members of our community if we are to honestly meet the needs of our community.

Recently SHCA deliberated extensively on the merits of a proposal for the old NewMarket site for a luxury hotel and condominium complex, as put forth by Bridgeman Development and designed by the architectural firm H2L2. Some members of the community were against supporting the project because of the number and nature of the required variances; others favored the promise of commercial revitalization and enhanced corridors along Second and South Streets. Some opposed the project because it threatened to diminish the light and obstruct the views of the near neighbors; others supported the affluence and amenities that a "Starwoods Luxury Collection Hotel" and five-star restaurant would bring. Many near neighbors supported the project, while some members of the greater community were in opposition — an exceptionally challenging and sensitive circumstance that has driven home the importance of our association and its committees giving voice to a broader base.

In assessing the fiber of any challenging circumstance, it is very important (and difficult) to evaluate the challenge in its entirety. This requires multiple angles rooted in diverse points of view. Too few opinions from too few perspectives compromise our capacity to understand emerging paradigms. The lens through which we organize and make sense of the world necessarily limits our view and shapes our response. If SHCA is to remain vital and broadly reflect the values of the community to which we are committed and which we aim to represent, we must get beyond the lens which merely underscores the prevailing view and welcome perspectives with which we may be uncomfortable, but from which our association can grow.

For Society Hill, this could well be a defining moment. I urge all of you to be active and involved when it matters, rather than vocal and critical when it does not.



**Richard de Wyngaert,  
President**

---

We need to engage more members of our community if we are to honestly meet the needs of our community.

---

### In this Issue...

**Page 7**  
Reporting About *The Reporter*

**Page 9**  
NewMarket Development Proposal

**Page 11**  
Society Hill's "Original Vision"

**Page 15**  
Clean-Up Day and Society Hill Open House Tour

**Page 17**  
South Street Streetscape Improvement

**Pages 25**  
Accidental Tourist

**Pages 29**  
House Restoration Saga

**Pages 34-35**  
Noteworthy Neighbors Elizabeth & Stanhope Browne

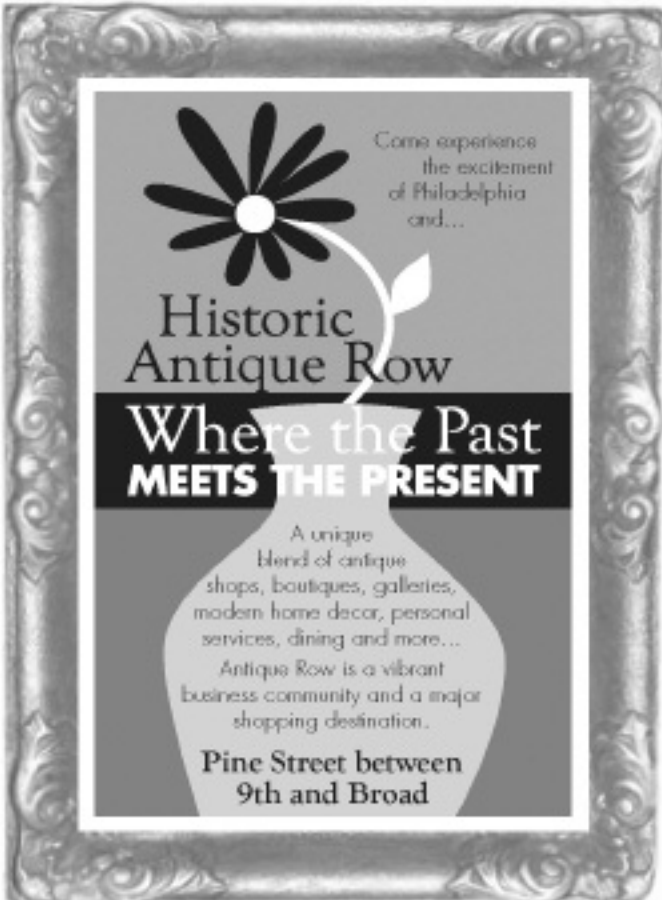
**BE UNIQUE**  
 WEAR  
 ONE-OF-A-KIND ART JEWELRY  
 from  
**ADORNAMENTI**  
 A Collection of Jewelry

1106 Pine Street  
 215-922-2722

DECORATE YOUR HOME  
 ONE-OF-A-KIND CONTEMPORARY CRAFTS  
 from  
**SHOW OF HANDS**  
 A Collection of Crafts

1006 Pine Street  
 215-592-4010

*We contribute to Welcome Basket.  
 We are located on Historic Antique Row.*

Come experience  
 the excitement  
 of Philadelphia  
 and...

**Historic  
 Antique Row**

**Where the Past  
 MEETS THE PRESENT**

A unique  
 blend of antique  
 shops, boutiques, galleries,  
 modern home decor, personal  
 services, dining and more...

Antique Row is a vibrant  
 business community and a major  
 shopping destination.

**Pine Street between  
 9th and Broad**

*paper \* on \* pine*  
 An Experience Far Beyond Paper!

Gifts That Exceed  
 Your Imagination!

1008 Pine Street • Phila., PA 19107  
**215.238.0385**  
[www.paperonpine.com](http://www.paperonpine.com)



**Celebrating Our 10th Year!!**

*Happily  
 Ever After*

*Your neighborhood toyshop wants  
 to welcome you with a gift:*

**Happily Ever After Baby Bonus**

*Bring a snapshot of your newborn for our  
 website and we will send you a \$25 coupon  
 towards your next purchase!*

**1010 Pine Street • 215-627-5790**  
**[www.happily.com](http://www.happily.com)**



---

**P O L I T I C S   A N D   C A S I N O S**


---

## Consensus Builds Toward Finding Alternate Casino Locations

A new vision for the waterfront, unveiled by PennPraxis\* last fall, coupled with continuing and vociferous community opposition to the two currently proposed casino locations, have coalesced in an overwhelming consensus among Philadelphia leaders, planners, and property owners that the two proposed casinos should be moved to other sites away from residential neighborhoods.

A *Philadelphia Inquirer* editorial (see sidebar on this page), refers to the grave problem of locating casinos near the “already traffic-clogged

waterfront” — so close to densely populated historic communities.

---

**\*Note:** PennPraxis is the clinical arm of the University of Pennsylvania’s School of Design, which offers opportunities for faculty and students to problem-solve across the disciplines of architecture, landscape architecture, historic preservation and city or regional planning. Through public forums that invite citizens to participate in the planning process, PennPraxis was assigned to spearhead the effort to create a lasting public design legacy... Delaware River’s central waterfront. (For more information, visit [www.planphilly.com](http://www.planphilly.com))

---

“Why devote prime waterfront real estate to an industry whose long-term future is in itself a gamble?”

---

*Philadelphia Inquirer*

---

## Casino Profits Delayed Due to The Governor’s Refusal to Move Waterfront Casinos

In early February 2008, Governor Rendell reproached City Council for having “no guts” in the face of strong opposition by neighborhoods throughout Philadelphia to the current siting of Foxwoods and SugarHouse. In fact, a broad-based coalition of 27 community groups, the Philadelphia Neighborhood Alliance (PNA), has been fighting for the past sixteen months to re-site these casinos. The Governor, however, accused both City Council and its constituents of keeping Pennsylvanians from receiving greater

property tax reductions. In response, a delegate to PNA and a board member from Pennsport, Rene Goodwin, said: “The faster these casinos are moved to more appropriate locations, the faster Pennsylvanians will receive tax relief and construction workers can begin building.” Councilman DiCicco responded to Rendell’s accusation by saying that the Governor was having a “bad day” and that he was pandering to casino interests. He also told City Council that for the Governor “to call us gutless is a disgrace.”

---

**S U B J E C T :   R I V E R F R O N T   R E V I V A L**


---

Letter written by Stan Browne, published in *The Philadelphia Inquirer*, Nov. 21, 2007

Congratulations to PennPraxis for its magnificent Philadelphia riverfront plan (“A Walkable Waterfront?” Nov. 14) and to the political leaders, the William Penn Foundation and *The Inquirer* for supporting this important effort.

For sixteen frustrating years (1981-1997), I was Chairman of the Penn’s Landing Corporation. The ideal plan, stunning project proposal, strong real-estate market, and available financing could never be brought into alignment. Reflecting on that experience and seeing what other cities have done, I concluded that Penn’s Landing

should be more park-like. The 1980’s festival marketplace model is no longer appropriate.

The PennPraxis plan goes in exactly the right direction. Planning, always necessary, is made respectable again. I have never been happier about the future of our riverfront. I sense a new political will — emanating from the politicians, news media, neighborhood groups and the larger civic discourse — that could at last achieve the goals I dreamed of. But we must set a high standard of design excellence, and we must push the casinos much farther away.

To the inevitable naysayers, I quote the great architect Daniel Burnham: “Make no little plans; they have no magic to stir men’s blood.”

# PANORAMA RISTORANTE

Contemporary Italian cuisine and over 120 wines by the glass every day.  
Winner of The Wine Spectator Best of Award of Excellence. Private Wine Cellar and Reception Rooms available.

Ristorante Panorama at the Penn's View Hotel  
Front & Market Streets Philadelphia, PA 19106

Restaurant Reservations  
Call 215.922.7800

Complimentary Parking at Lunch

[www.pennsviewhotel.com](http://www.pennsviewhotel.com)

# The Finest Seafood



*Have us Fresh Every Day!*

THE OCEANIC

Seafood Room

700 Walnut Street  
Philadelphia, PA 215/625-8862

[www.theoceanic.com](http://www.theoceanic.com)



## Christopher Falzone

International award winning concert pianist

(The Curtis Institute of Music)

Liszt  
Rachmaninoff  
Beethoven  
Mozart

Now available in Society Hill for...

**Elegant events in intimate or festive settings**

and

**Private piano lessons**

267.258.5711

email: [christopher\\_falzone@yahoo.com](mailto:christopher_falzone@yahoo.com)

Scriabin  
Bartok  
Chopin  
Schumann  
Enescu  
Hindemith

---

## What You Should Know About Our Community Newsletter

---

### Reporting On *The Reporter*

This is the first 2008 edition of the *Society Hill Reporter*. The newsletter, created almost twenty years ago, has been a continuous link between our community and the Society Hill Civic Association. The January issue was a special edition, called *2008 Resident's Resource Guide* — which provides a list of city services and key contact information that neighbors are asked to retain for future use. However, this *Guide* erroneously stated that SHCA's Board of Directors thanked Bernice Hamel for her contributions to the *Reporter*, implying that she has retired as Managing Editor and stating that in the future there would be a new team of editors. This is incorrect, as the newsletter will continue its successful service with no change in leadership.

The *Society Hill Reporter* was founded on several key principles: **collegiality, inclusiveness and a spirit of neighborliness**. It has evolved from a brief handout to a quality source of information for community “old-timers” or newcomers, hi-rise residents or those living in historical homes — simulating the experience of living in a village. We regularly meet our community’s “Noteworthy Neighbors” through David Woods’ column, and we also enjoy enlightening or “fun” information through Jane Biberman’s feature articles she calls “Accidental Tourist in My Own City.” Most important, the newsletter keeps neighbors regularly informed about events or happenings that may affect our quality of life here on “the Hill.”

The *Reporter* is distributed free of charge to all homes, businesses and professional offices within Society Hill — regardless of whether or not recipients are members of SHCA — resulting in a major interest and increase in association membership. SHCA has grown over the past several years, from approximately 300 members to about 1,000 members. This dramatic increase in SHCA enrollment has been aided, of course, by the association’s many active committees and volunteers.

The newsletter is a totally volunteer effort, managed by its Editorial Board, which welcomes anyone prepared to roll up his or her sleeves to write, edit or proof any and all submissions. The *Reporter's* Editorial Board has always been closely connected to SHCA's governance, as several members are Board Officers and Quadrant Directors. Currently, for example, SHCA Directors who also serve on the newsletter's Editorial Board include: Vice President Carole LeFavre-Rochester, Recording Secretary Marilyn Appel, Northwest Quadrant Director Rosanne Loesch, Southeast Quadrant Director Sandy Rothman, and Vice President Bernice Hamel, the *Reporter's* founder and Managing Editor. Columnists who serve on SHCA's Board include Vice President Martha Levine and Steven Weixler, Chair of SHCA's Zoning & Historic Preservation Committee, who writes the ZHP Report for every issue. In addition, SHCA's president is always a valued columnist who speaks directly to the neighborhood through his or her “President's Message.”

This volunteer newsletter is produced at absolutely no cost to SHCA. Advertising revenues cover all expenses, including professional design fees, printing and distribution costs. Although the *Reporter* often generates additional revenue for worthy neighborhood causes, such as our Franklin Lights improvement program, **the purpose of the newsletter is not and never has been to produce income for the civic association.**

These days, with up-to-date technologies, such as SHCA's website, [www.societyhillcivic.org](http://www.societyhillcivic.org) — and the fact that most neighbors are e-mail connected — the production of six issues per year is an exceedingly heavy burden for the *Reporter's* team. More timely neighborhood information can now be provided — if and when necessary — by accessing the website or communicating via email between production of the *Reporter's* now four annual issues.

---

#### ADVERTISING INFORMATION

---

The *Reporter's* consistent high quality has placed us in a quandary, as we receive more requests for ads than the newsletter can possibly accommodate. It is our policy that in any given issue the number of pages for advertisements can never exceed the number of pages devoted to editorial material. To insure a space for your ad, promptly contact SHCA's Administrator Matt DeJulio, who serves as Advertising Manager, at 215-629-1288 or [mattdejulio@aol.com](mailto:mattdejulio@aol.com).



**Specializing in:**

- Orthopaedics
- Sports and Senior Rehabilitation
- Back and Neck Care
- Work Injuries

**Early Morning and Evening Hours  
Most Insurances Accepted**

**We're in your neighborhood!**

**420 Bainbridge St.  
Philadelphia 19147  
215.629.1270**

**1616 Walnut St.  
Suite 210  
Philadelphia 19103  
215.545.8717**

**Ask us about our FREE seminars  
Direct Access= NO prescription needed for  
physical therapy!**

IN SOCIETY HILL,  
MERRILL LYNCH CAN  
HELP YOU MAKE YOUR  
MONEY WORK HARDER  
BY WORKING TOGETHER.

How do you see your financial life? Your investments are there. Your retirement here. Your banking way over there. Seen separately and managed separately, your financial life can only take you so far. Now there's a way to go beyond those limits.

We call it Total Merrill™. At its heart is a powerful premise: your money works harder when it works together. A Merrill Lynch Financial Advisor will look at your total financial picture and deliver customized solutions that can benefit every area of your financial life.

Total Merrill. We see your financial life in total. We help you reach your goals.

**TO MAKE YOUR MONEY WORK HARDER BY WORKING TOGETHER, CONTACT A MERRILL LYNCH FINANCIAL ADVISOR TODAY OR VISIT [WWW.ASKMERRILL.ML.COM](http://WWW.ASKMERRILL.ML.COM)**

**1-800-733-2180  
215-568-1500**

**MERRILL LYNCH  
THE CURTIS CENTER  
601 WALNUT STREET  
PHILADELPHIA, PA 19106**

**THOMAS J. TARKA  
SENIOR VICE PRESIDENT-INVESTMENTS  
FINANCIAL ADVISOR**



**Merrill Lynch**



**TOTAL MERRILL®**

Total Merrill (design) is a registered service mark of Merrill Lynch & Co., Inc. Total Merrill is a service mark of Merrill Lynch & Co., Inc. © 2003 Merrill Lynch, Pierce, Fenner & Smith Incorporated. Member, SIPC.

We are honored to print the *SOCIETY HILL Reporter*

**SERVICES**

- Pre-Press
- Variable Data
- Graphic Design
- Full Service Offset
- High Speed Copying
- Digital Color Printing

**PRODUCTS**

- Newsletters & Manuals
- Brochures & Invitations
- Legal Documents
- Oversized Color
- Stationery
- NCR

1310 Sansom Street  
Philadelphia, PA 19107  
T 215.717.5151  
F 215.717.7420

11 East State Street  
Media, PA 19063  
T 610.566.8499  
F 610.566.4513

[www.mediacopyonline.com](http://www.mediacopyonline.com)

**MediaCopy**

*Focusing on you and your company's needs*



---

**ZONING AND HISTORIC PRESERVATION REPORT**


---

BY STEVEN A. WEIXLER, CHAIRMAN, ZHP COMMITTEE

## Stamper Square Proposal – Formerly NewMarket

Our community, our Civic Association and its Zoning and Historic Preservation Committee have been participating in an important dialogue over the last several months by attending multiple public meetings on a proposal by Bridgeman Partners to develop the vacant former NewMarket site. As moderator of these events, it has been at times frustrating but always rewarding to facilitate one of the most important functions of our community: an open conversation about the importance of our past and future well-being. On hearing the wide range of concerns around the very complex issues raised in this proposal, I am struck by the passion felt by the majority of us for the enhancement of our neighborhood.

The NewMarket site was originally intended by master planner Edmund Bacon as a location for neighborhood shops and amenities, compatible with surrounding 18th-century houses restored to family homes. The zoning code was written to encourage this. As often happens in urban planning, the site was instead developed to attract a different shopper and the investors' hopes were not realized. Ultimately, we were left with a large vacant parcel in a neighborhood with high real estate value — a neighborhood that is a national model for preservation and appropriate new construction.

In his article for the July 2005 *Reporter* "The Perils of Prosperity," John Gallery, Executive Director of the Preservation Alliance for Greater Philadelphia, commented that since the year 2000, "Center City has experienced an unusual surge in residential development. This tremendous interest in living in or near Center City is of great benefit to Philadelphia, as additional residents support new businesses, restaurants and cultural activities." Society Hill has been a part of this pattern and our Zoning and Historic Preservation Committee has been active in efforts to combine preservation with contextual new development. The Committee understands the intention of the zoning for the site to produce infill construction which maintains, in Gallery's words, "The (Front Street) skyline of four-story commercial buildings with church spires in the background." In his comments on the range of recent construction in neighborhoods like ours, Gallery went on to say: "...these new developments will greatly alter the overall character of the historic districts in which they are built, a character that — ironically — gives these sites and their neighborhoods their current high economic value." Combining new community-enhancing development with our architectural heritage is one of the primary concerns of the Committee.



**Stamper Square,  
artist's rendering**

All of this poses a challenge in the current real estate market and the context of ownership and intended development on the NewMarket site. Any resident of Society Hill is aware that while other neighborhoods to our north and south along the riverfront are barraged by interest in undeveloped parcels, ours is unique in the potential for high-quality projects and in the shortage of available new construction sites. NewMarket has lain unused, a liability for local business and immediate neighbors, since the derelict shopping center was torn down nearly a decade ago. Councilman DiCicco and other civic and business leaders are genuine in their concern that Society Hill benefits from high-quality development.

Bridgeman Partners has come forward recently with a proposal for a 150-room luxury hotel, its associated amenities and 85 condominium apartments, all designed by H2L2 Architects with our neighbor, Barry Eiswerth, as principal-in-charge. Their proposal has presented our community with a great challenge in the often-contradictory position between legacy and possibility. Their project requests more than triple the height allowed under the zoning code. It offers the chance to reinvigorate the Head House corridor on South 2nd Street. It would have profound impact to its immediate neighbors and would significantly alter the human scale of the area. It presents the chance to add modern architecture of the highest caliber to Society Hill, as I have discovered in many public meetings: a complex mixture.

This article is necessarily a bit of a cliffhanger. Our editorial deadline for this issue of the *Reporter* occurs before the Board of Directors of the Society Hill Civic Association receives a recommendation by its Zoning and Historic Preservation Committee and makes a decision to either support or oppose this controversial project. By the time this newsletter hits your doorstep, we'll know of the Board's action.

*continued on page 11*

# Tuscany Cafe

Now Open in Your Neighborhood  
on Washington Square!

Soups ~ Salads ~ Wraps ~ Sandwiches  
Gourmet Coffees ~ Specialty Teas  
Pastries ~ Desserts

Daily Food and Drink Specials

Introducing Boxed Lunches and Corporate Catering

725 Walnut Street ~ 222 W. Rittenhouse Square  
215-625-3666                      215-772-0605

Bring in this ad to either location  
and receive 20% off  
your breakfast or lunch entree



IT'S ALL ABOUT YOU AND THE FOOD!

Chef Felix Maietta of The Down Town Club  
in Philadelphia presents  
The Union Gourmet Market & Café

## OPENING SOON!

### Featuring:

- Delicious Chef Prepared Foods To Go or Eat In
- Gourmet Sandwiches, Wraps & Paninis
- Antipasto Bar
- Barista & Fresh Baked Pastries
- Specialty Pizzas
- Catering Services
- Indoor Café & Alfresco Seating
- Sunday Brunch

Present This Coupon for A FREE Cup of REGULAR or DECAF COFFEE  
It's our way of welcoming you to Union Gourmet Market & Café



This coupon has no cash value. Offer good thru June 2, 2008.

**215-238-8800**

[www.uniongourmetmarket.com](http://www.uniongourmetmarket.com)

1113 Locust Street, Philadelphia, PA 19107  
Located in the Residences at The Western Union Building

**OPEN SUNDAYS**

Have a cannoli or  
éclair, watch fresh pretzels  
made with care...

**make it your market**  
12th & Arch    Mon-Sat 8-6 & Sun 9-4  
\$3 parking - [readingterminalmarket.org](http://readingterminalmarket.org)

---

**PROPOSED STAMPER SQUARE DEVELOPMENT**


---

 COMMENTS BY FOUNDING SHCA DIRECTOR: HARRY K. SCHWARTZ
 

---

## Society Hill's Original Vision

I was a Board Director of the Society Hill Civic Association back in the early 1970's, and served on its Design Review Committee, which I believe was the predecessor of the present Zoning and Historic Preservation Committee. In those days it would never have occurred to any of us serving on the Board to approve a development of the height and scale now proposed for the old NewMarket site.

We were keenly aware of the original vision for Society Hill — that it would become a community of neighbors living in a low-rise enclave of historic row houses. We well understood that Society Hill didn't just happen; it was the product of the planning genius of Ed Bacon and others who created Society Hill through the selective demolition of Victorian housing stock and commercial and industrial buildings, and the rigorous preservation of the late 18th-century and early 19th-century houses that have made this neighborhood such a wonderful place to live.

We also appreciate the ingenuity that produced the Society Hill Towers as a magnet for young families. In those days the streets below were pretty much deserted and forbidding — shells of old houses and vacant lots. It took the Towers to lure young families into the neighborhood. The views were wonderful, the rents were reasonable, and the apartments were small. So when those young couples started to have children and needed more space, they began to buy up the old shells from the Old Philadelphia Development Corporation and restore them. That was the plan.

We always intended Society Hill to be a neighborhood of houses. On the Design Review Committee, our principal concern was with the development of vacant lots — the infill. Some of the best houses we approved were designed by Barry Eiswerth, then and now, a neighbor and friend. We tried to encourage the design of houses that would fit in, that would be contemporary but compatible with the older houses. But we never worried about height limitations, because the zoning code was designed to prevent any development that would be too tall. And it has worked pretty well to do just that.

We understand that a lot of money has been invested in the NewMarket site — based on the assumption that the height limitations in the zoning code could be circumvented. That is the kind of risk developers sometimes take. And the risk is there because many of us believe that the height limitations of the code are important in keeping the neighborhood the way it was intended to be: a community of row-house neighbors. Those limitations have made Society Hill the wonderful community it is, and they should be respected.

I think it is really important that all of us who live here, and who will continue to live here, don't lose that spirit of neighborliness and friendship that makes Society Hill such a wonderful place to live and bring up children. We may have differences from time to time, but we should never let those differences divide us or erode the sense of community that is such a precious part of Society Hill.

---

**Note:** Harry and his wife, Marinda, lived in Society Hill from 1968 to 1977 — first in Lawrence Court, and then they purchased and restored a house (circa 1820-1830) on the southeast corner of 3rd and Pine Streets — something of a neighborhood "landmark" during the 1920's — known as Nicholl's Drug Store. The couple moved to Washington so that Harry could serve as Assistant Secretary of Housing and Urban Development in the Carter Administration, followed by two years of service with the Domestic Policy Staff at the White House. He left the White House staff in 1980 and practiced law in D.C. for about twenty years, after which he became Director of Public Policy of the National Trust for Historic Preservation. About a year and a half ago, after thirty years in Washington, Harry and Marinda returned to Society Hill.

---

### Stamper Square Proposal

*continued from page 9*

Harry K. Schwartz, an "early pioneer" in the development of Society Hill, recently returned to the neighborhood from Washington, D.C., after retiring as Director of Public Policy of the National Trust for Historic Preservation. Although Harry's comments, on page 9, indicate his opposition to the height and scale of the proposed Stamper Square development (at press time, in late February), his words deserve repeating: "I think it is really important

that all of us who live here, and who will continue to live here, don't lose that spirit of neighborliness and friendship that make Society Hill such a wonderful place to live and bring up children. We may have differences from time to time, but we should never let those differences divide us or erode the sense of community that is such a precious part of Society Hill."

Whatever the outcome, SHCA's Zoning and Historic Preservation Committee will continue working to maintain and enhance the quality of life we enjoy here on "the Hill."

## What Food Can You Trust?

Wednesday, March 19th

Come to **SHCA's General Membership Meeting** at Pennsylvania Hospital's auditorium and learn about The Food Trust, the operator of our wildly successful, seasonal Head House Farmers' Market. Based on our enthusiastic patronage of the market, more than 25 area farmers gather to sell a wide variety of produce, cheeses, jams and meats. The market this spring begins on Saturday, May 3rd, open from 10 a.m. to 2 p.m.

Founded in 1992 in response to the contemporary epidemic of diet-related disease and malnutrition, the Food Trust's mission is to ensure access to affordable, nutritious food. It accomplishes its mission by partnering with teachers, health-practitioners, food retailers, policy-makers, farmers, as well as nonprofit and for-profit entrepreneurs. Collectively, the Trust's efforts address issues that prevent our food and farming systems from adequately serving the hundreds of thousands of individuals throughout the Philadelphia region. And by creating or restoring vital marketing opportunities — such as the wonderful market we currently enjoy at Head House — local land and farms are not lost to development — helping preserve wildlife, rural communities and open space.

## Old House Fair

Saturday, March 22nd

The 2008 **Old House Fair**, one of the longest-running house restoration themed fairs on the East Coast, will take place on Saturday, March 22, from 9 a.m. to 5 p.m.



The Old House Fair connects owners of older and historic homes with interior and landscape designers and features 75 booths of professional vendors and consultants. A "free 15-minute consultation" with old house professionals will be offered at the "Ask The Experts" booth.

Presented by the Preservation Alliance for Greater Philadelphia, the fair will take place at the Germantown Friends School — at 31 West Coulter Street, in Philadelphia. General admission is \$10 (\$8 for Preservation Alliance members). Tickets may be purchased at the door or online at [www.preservationalliance.com](http://www.preservationalliance.com). For more information, contact Patrick Hauck at 215-546-1146 ext.4.



## Old Pine Street Presbyterian Church

Please join us for worship  
**Sundays at 10:30am**  
Nursery Care Available  
Sunday School  
Ages 3 - grade 8

412 Pine Street  
215.925.8051  
[www.oldpine.org](http://www.oldpine.org)

## Congregation Rodeph Shalom

A Welcoming Reform Congregation in Center City Philadelphia



### TOT SHABBAT

Saturdays, March 15<sup>th</sup> and  
April 5<sup>th</sup> at 9:30am

Bring your toddler for a joyous  
gathering

**FREE & OPEN TO PUBLIC**

### SYNAPLEX SHABBAT

Friday, March 28<sup>th</sup> at 6:00pm

Choose from one of the  
following options

- 1) A Service *In Song*
- 2) Passover Cooking with  
Lynn Buano from "Feast  
Your Eyes"
- 3) Torah Yoga

**FREE & OPEN TO PUBLIC**

### PASSOVER SEDER

Sunday, April 20<sup>th</sup> at 6:00pm

Join us for a community  
Passover celebration

**OPEN TO PUBLIC**

- Shabbat Evening Service  
Friday at 6:00pm or 8:00pm  
(Check the website for service  
schedule.)

- Torah Study  
Saturday 9:15am

- Shabbat Morning Service  
Saturday 10:45am

- Religious School &  
Confirmation Academy  
Sunday mornings

*Our doors are open to all!*

615 North Broad Street  
Philadelphia  
[www.rodephshalom.org](http://www.rodephshalom.org)  
Secured parking

For more information con-  
cerning these programs or  
about our congregation call  
215.627.6747



## CAROLE WEINSTOCK

Professional Organizer  
[cleanthec clutter@comcast.net](mailto:cleanthec clutter@comcast.net)  
856-952-4439

## CLEAN THE CLUTTER

Let us Simplify, Beautify, and Maximize Your Space!

**We Reorganize and Transform  
All Closets, Kitchens, Baths, Etc.**

## Annual Easter Egg Hunt At Three Bears Park

Sunday, March 23rd, 10 a.m.

The Friends of Three Bears Park invite you to the annual Easter Egg Hunt.

**Note to Kids:** We'll see you at the park, but please remember to arrive with your very own Easter Basket. Then be prepared to hunt for "hidden" Easter eggs, filled with candy and toys.



**Note to Parents:** If you are interested in volunteering or underwriting either a portion or all of this fun-filled kiddie event, please contact Trish Kyle at 215-238-8910 or Catherine Signorello at 215-919-3189.

## Walkie-Talkies Are Still At It!

Tuesdays & Thursdays

**Ladies:** If you enjoy meeting neighbors from around the corner or down the street, and if a bit of non-strenuous exercise will increase your sense of well-being, consider showing up for Society Hill's Walkie-Talkies group. When it's not raining, just stroll over to Three Bears Park on any Tuesday and/or Thursday morning. Participants begin "struttin their stuff" by 8:15 a.m. — so you'll want to arrive at the park no later than 8:10 a.m.

Depending on how many gals appear on any given day and how much time is available, these walks can take as few as 45 minutes or can extend to, at most, one and one-half hours. With different routes taken on any given day — always at a comfortable pace and enlivened with congenial conversation — it's amazing how many little-known streets, alleyways and interesting sites have been discovered, in addition to the discovery of new friendships.

### GoodWoofs

Exceptional Care for Your Extraordinary Pet®

Pet to Vet Transit  
Overnight • Weekend & Vacation Care

www.goodwoofs.com  
215-849-WOOF  
Peg Pullan, Owner

Bonded • Insured • Member Pet Sitters

Patricia Bentz CPDT, CDBC  
Certified Dog Trainer & Behavior Consultant

*"Going to the Dogs"*

### K-9 Training & Behavioral Therapy

- One-on-One Obedience Training at Home
- Behavioral Consultation
- Puppy Head-Start
- Reward-Based Methods Only



(215) 551-5254  
Queen Village

Hours by Appointment      Gift Certificates Available



**THE MONSTER MINDERS**  
DOG WALKING & PET SITTING



\$25 OFF

YOUR FIRST MONTH  
of weekly dog walks (with this ad)

- ☛ We offer the same care you do - individual & undivided attention for your monster's safety and well being (No group/pack walks.)
- ☛ Client access to online scheduling tools and interactive calendars for peace of mind.
- ☛ Certified in Pet First Aid and CPR
- ☛ Bonded and Insured

We are honored to be awarded "Best of Philly" by Philadelphia magazine, and we make sure we live up to our name - Best Urban Pet Sitter 2006



*"the city's best sitters"*

Philadelphia HOME magazine  
Winter 2008

www.TheMonsterMinders.com

Phone: 215-925-1119 Email: info@themonsterminders.com



SOCIETY HILL'S PREMIER SALON  
316 S. 5TH STREET  
215 873 8090

UNASSUMING, BUT CERTAINLY NOT ORDINARY.

**salon @ 5th**

## Allure Nails & Spa



Manicures  
Pedicures  
Artificial Nails  
Waxing  
Body Massages  
Facials

712 Chestnut Street  
Philadelphia, PA 19106  
215-629-1630

Mon - Fri 9:30 am - 7 pm  
Sat 9:30 am - 6 pm

 Quality and Services offered from  
Our Family to Yours Every Day!

# ShopRite of Snyder Plaza

29 Snyder Avenue • (215) 271-2711 Owned and Operated by the Colligas Family



Use Our ShopRite  
from Home and  
we'll do the  
shopping for you.

Easy pick up in front of our  
store or we can deliver it right  
to your front door.

7 Days a Week • 9 am to 9 pm  
Visit us at: [www.shoprite.com](http://www.shoprite.com)



### The Meating Place®

Come in today and meet our Butcher from 6am to 9pm, Sunday thru Saturday. He can give you expert advice on selecting the right cut of meat for all of your special recipes.

### Baked from Scratch!

There's Always Something in the Oven! Using the finest, freshest ingredients, we bake specialty items from scratch, the old fashioned way. It's like having your favorite home town bakery right at ShopRite!

### Brighten someone's day...

with a custom arrangement made by Carolyn and Maria in our Floral Shoppe. Or pick up a luscious fresh fruit and nut basket for every occasion.



### Make your wedding day special

with a custom cake from ShopRite. Say "I Do" with confidence and enjoy the perfect cake on your perfect day.

---

**C L E A N - U P   D A Y**


---

## Rain or Shine – A Clean Sweep

### Saturday, May 3rd

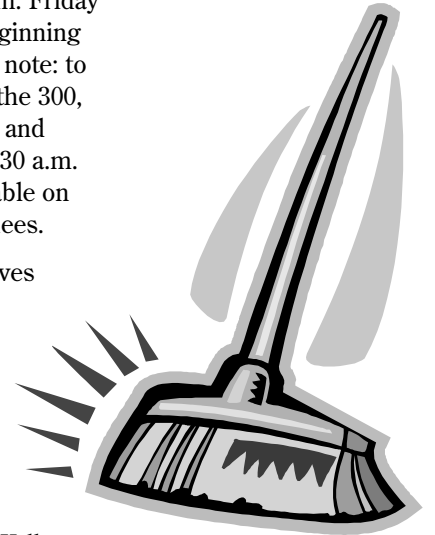
Join your neighbors for Society Hill's annual spring Clean-Up Day early on Saturday morning, May 3rd. Since leaves and debris must be swept from sidewalks, walkways and alleys before the sweeper trucks make their rounds throughout the neighborhood — between 8 a.m. and noon — we recommend that you start your cleanup at 7 a.m.

If you wish, you can pick up brooms, trash bags and gloves outside of the 5th Street SuperFresh between 8 a.m. and 1 p.m. Coordinator Wally Wing reminds us to do a “clean sweep” on all blocks within our neighborhood's boundaries — from Walnut to Lombard Streets, and S. Front to 8th Streets. Neighbors living close to Three Bears Park or the McCall School are asked to also sweep the sidewalks of these areas.

Where posted, cars must be moved to the opposite side of the street after 6 p.m. Friday evening, as cars may be ticketed beginning 8 a.m. on Saturday morning. Please note: to accommodate synagogue services, the 300, 400, and 500 blocks on both Spruce and Lombard Streets will be swept by 8:30 a.m. on Saturday—leaving parking available on the south side for synagogue attendees.

By the way, on Saturday bagged leaves from your backyard or garden, as well as from Three Bears Park can be left no later than 1 p.m. at intersections on Locust, Spruce, Pine and Lombard Streets where they cross numbered streets.

If you have questions or would be willing to volunteer, please contact Wally at 215-592-9951 or [wally.wing@verizon.net](mailto:wally.wing@verizon.net).




---

**S O C I E T Y   H I L L ' S   O P E N   H O U S E   &   G A R D E N   T O U R**


---

## Change Is in the Air

### Sunday, May 4, 1 to 5 p.m.

The much anticipated annual Society Hill Open House & Garden Tours — previously two separate events on different dates — will be combined this year, featuring a selection of exciting homes and fabulous gardens. Participants will enjoy a variety of antiques and home furnishings, as well as city gardens filled with horticultural interest.

Philadelphia Open House, sponsored by the Friends of Independence National Historic Park (FINHP), is celebrating its 35th season. Each year, the Friends work with many different communities to present tours of private homes and gardens. Included are some of the finest historic homes in the area, as well as those with contemporary architectural significance.

Did you know that the Society Hill Open House Tour is the only annual event that directly benefits our association? Our income from these tours has historically been SHCA's third-largest source of revenue. This year we will profit even

more — as all neighborhoods participating in the Philadelphia Open House Tours will receive 90% of the proceeds rather than 66% as in past years. The remaining 10% goes to our co-sponsor, FINHP, which supports the park with educational and interpretive programs.

Tour Coordinators Linda Skale and Martha Levine have worked tirelessly for the past seven years to present the best possible event. You can support their efforts by volunteering to host a house, for just a couple of hours, and in exchange you'll receive a free ticket to enjoy the tour yourself. Tell a friend about this wonderful program, and bring along a friend to tour these homes and gardens.

For more information, contact Martha Levine at 215-629-0727 or [marthalev@msn.com](mailto:marthalev@msn.com). To directly purchase tickets with a Visa or Mastercard, call the Independence Visitors Center at 215-965-7676 or 1-800-537-7676 (8:30 a.m.-5 p.m.) or visit [www.independencevisitorscenter.com](http://www.independencevisitorscenter.com). Tickets, at \$35 each, will be available at the Old Pine Street Church on the day of the tour.

PHILADELPHIA  
OPEN  
HOUSE



**\$30 per reserved ticket. \$5 discount for SHCA members with card.**

**SUPPORT AMERICA'S OLDEST MARKETPLACE**

**Join us for Our Soiree at the Shambles**

**Wednesday, June 4th**

**M**ark your calendar and plan to join us for a fundraising celebration in support of a National Historic Landmark in the heart of our neighborhood, at S. 2nd Street, between Pine and Lombard Streets. America's oldest marketplace, built in 1745 and commonly known as "the Shambles," is attached to the nation's oldest surviving firehouse, built in 1805.

Recently the space beneath the Shambles was revitalized back to its original purpose as a farmers' market — held every weekend from spring through fall — starting May 3rd and through Thanksgiving, 10 a.m. - 2 p.m.

Our June fundraising event, to be held under the Shambles, is being co-sponsored by The Head House Conservancy in partnership with the Society Hill Civic Association, the South Street Headhouse District and

Queen Village Neighbors Association — to help cover the cost of maintaining this jewel in our midst. Any building, whether old or new, needs ongoing maintenance, and this unique structure has accumulated a list of needed repairs and improvements since it was first rescued and restored by the Conservancy circa 1990.

All proceeds from this fun social event will finance the building's improvements. And please note that all donations to the Head House Conservancy are tax-deductible, as the purpose of this nonprofit organization is to assure that Head House will never again fall into a "threatened and endangered" condition — as the Conservancy found it during the 1980s. For more information, or to volunteer as a party or soiree-planner, please contact Conservancy President Bernice Hamel, at either 215-925-4363 or [bernicehamel@comcast.net](mailto:bernicehamel@comcast.net); or Conservancy Board Directors Tania Rorke at 215-370-6485 or [trorke@aol.com](mailto:trorke@aol.com); or Dave Hammond at 215-413-3713 or [Daveatssh@aol.com](mailto:Daveatssh@aol.com).

**Let's Plan on Partying at the Shambles in June!**



**WEIXLER PETERSON LUZI**  
 EXCEPTIONAL INTERIORS  
 EXTRAORDINARY LIVING

215 • 592 • 9570  
[www.wpline.com](http://www.wpline.com)

**R. Chobert Decorating Co.**  
*Painting/Wallcovering  
 Interior/Exterior*

*Creating Beauty Since 1967*

**Rupert Chobert**  
 641 Reed Street  
 215.389.7788 TEL  
 267.977.7443 CELL  
 215.755.6655 FAX

**Are you ready for your future?**

Contact me to discuss taking control of your financial issues.

**Eagle Strategies Corp.**  
 Hassan Jadidi  
 Financial Adviser  
 Tel: (215) 441-6558  
[www.myhasanjadidi.com](http://www.myhasanjadidi.com)  
 A Registered Investment Adviser

Registered Representative offering securities through NYLIFE Securities LLC, Member NASD/SIPC  
 101 Gibraltar Road, Suite 150, Hoshang, PA, 19044 • Tel: (215) 441-3240



**SOUTH STREET STREETScape IMPROVEMENT**

## Where All the Hippest Meet



*Side by side we're loose and neat  
When we're stompin' down the street...*

So croon the Orlons in their iconic tune saluting South Street, Philadelphia's most hip and happening spot. Breaking news is that this trendy but tattered strip is about to get its long-anticipated facelift!

*Do you hear that groovy beat?  
Don't it make you move your feet?*

If so, get ready to stomp all the way from Front to 8th Street! New pale gray sidewalks, accented with darker corner ramps, highlight the endeavor. Freshly planted trees, up to ten for any block, new street and traffic lights, repositioned granite curbs, bike racks and repaved tar complete the project.

Things have been underway since March 3rd on the 100 block of South Street and will proceed west one block at a time. Barring unforeseen

circumstances, it's expected to take two weeks for each side and four weeks to complete a block. Traffic will remain open with potential momentary closures. To create minimal interruption to businesses, construction will be Monday through Friday, 7 a.m. to 3:30 p.m., and all stores will remain open — accessed by boardwalks with railings. Parking meters on the opposite side of the area being worked on will remain available for customer convenience.

General Contractors, Carr & Duff, who have done numerous City projects, will have an office on site — as will a Streets Department engineer who, by the way, has the Rat Control Department on speed dial in the unlikely case the need arises. Neighbors can address all questions to streetscape1@aol.com.

*Come on now, meet me on South Street.  
The hippest street in town.*



*Purchase any Classic Flame fireplace and receive FREE delivery and set-up.*

*Now featuring award winning  
**Classic Flame** electric  
fireplaces.*

*Finally you can have a warm,  
elegant fireplace  
**ANYWHERE!***

*As always, MBC offers a full line of the highest quality gas & wood systems, inserts & stoves, with our emphasis on superior customer service.*

**New Showroom Open!!**

609 Lancaster Ave.  
Frazer, PA 19355  
484-318-7846  
[www.mbcfireplace.net](http://www.mbcfireplace.net)



*The **EIKLOR** Ultimate 5-Burner Gas Log System*



**ASG**  
Atlantic Service Group

On-site Computer Repair, Upgrades and Network Services  
Comcast/Verizon Security Check and Firewall Installation  
Virus and Spyware Detection/Removal  
Beginner and Advanced User Training  
Very Reasonable Pricing

**215-925-9996**

**AMERICAN PHILOSOPHICAL SOCIETY MUSEUM**  
Adjacent to Independence Hall, 104 South Fifth Street



**DISCOVER THE APS MUSEUM**

- It's the only venue in Independence National Historical Park to host exhibitions exploring history, art, and science. See **UNDAUNTED: Five American Explorers, 1760–2007**, now through 28 Dec. 2008.
- It's the newest contemporary art venue in Philadelphia—that's 260 years old. See **UNEXPECTED: Contemporary Artists at the APS Museum**—site-specific art, interactive performances, and video.

**FOR PROGRAMS, DATES, AND TIMES: WWW.APSMUSEUM.ORG**

**Cosmos**  
Fine Nail Salon

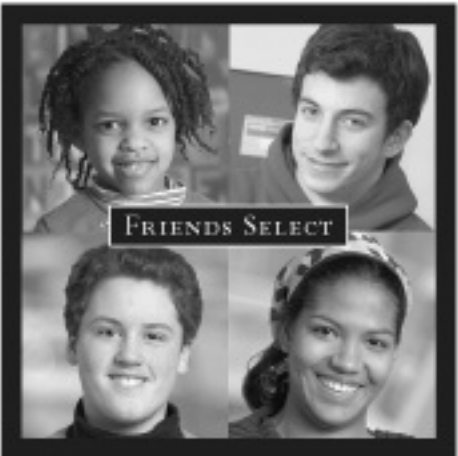
Mon-Fri 9:30 am - 7 pm  
Sat 9:30 am - 6 pm

a nail salon  
for men & women

21 South 7th Street  
215-627-1020


1308 Sansom Street  
215-545-5456

**A Vibrant City.  
A Close Community.  
A Culture of Learning.**



**Open Houses**  
**Thursday, March 13, 8:45 a.m.**  
(Grades Pre-K - 5 only)  
**Tuesday, May 6, 8:45 a.m.**  
(Grades Pre-K - 12)

A college preparatory, coed, Quaker day school, pre-K through 12, at 17th on The Parkway in Center City Philadelphia. Admission and open house information: 215.561.5900 ext 104 [www.friends-select.org](http://www.friends-select.org)



**TRADITION.  
INDEPENDENCE.  
EXCELLENCE.  
SINCE 1834.**

A St. Peter's education prepares children to be lifelong learners and achievers. Our students are taught to have the courage of their convictions and the capacity to express them. St. Peter's is a multi-denominational school, educating boys and girls from preschool to eighth grade.

**St. Peter's School**  
ACADEMIC EXCELLENCE SINCE 1834

Visit [stpetersonline.org](http://stpetersonline.org) for complete information.  
319 Lombard Street • Philadelphia, PA 19147 • 215.925.3963

## LEARN TO PLANT AND CARE FOR TREES

## Become A Tree Tender

If you're one of those people who can't resist hugging a tree, consider signing up for nine hours of hands-on training developed by the Pennsylvania Horticultural Society (PHS) and Penn State Cooperative Extension. Topics include tree biology, tree identification and planting. Also addressed are basic pruning and root care as well as urban stresses on trees.

Designed for experts and lay people alike, this free, three-part series is based on PHS's Tree Tenders project that has trained over 2,000 community volunteers from 150 southeast Pennsylvania neighborhoods. Classes start on Wednesday, May 7, 5:45 to 8:45 p.m., and continue May 14 and 21. Location is PHS offices at 100 North 20th Street, 5th Floor.

For more information or to register, please contact Mindy Maslin at 215-988-8844, or [mmaslin@pennhort.org](mailto:mmaslin@pennhort.org).

If you notice a missing or dying tree that should be replaced on your block, please consider planting one this spring. If you do, forward your receipt to SHCA, which will send you a \$150 subsidy. Call 215-629-1288 with inquiries.



## Out On A Limb

Over the past two years, more than twenty new trees have been planted in our neighborhood. We extend our thanks to these folks who spent, collectively, more than \$21,000 beautifying Society Hill's streetscape. SHCA contributed as well, with subsidies that totaled \$4,000.

Phil Alperson &  
Mary Hawsworth  
300 block of S. Sixth

Theodora Ashmead  
700 block of Locust

Dr. & Mrs. Ernest Barrett  
600 block of Addison

Jim Fitzsimmons  
200 block of S. Fourth

Leslie & Bob LaRocca  
400 block of Lombard

Rafael Lissack  
200 block of S. Third

Nancy Machinist  
600 block of Spruce

Sheila & John Paulos  
600 block of Pine

Penn's Landing Condos  
100 block of Spruce

Rene Saul  
200 block of S. Seventh

St. Peter's School  
400 block of Lombard

Jonathan Tori  
(Cal-20 Associates)  
300 block of S. Fourth

## SOCIETY HILL'S SIDEWALKS

## Careful: Don't Trip!

The current condition of Society Hill's sidewalks makes them potentially unsafe. When the neighborhood was restored many years ago, most streets were completely repaved — often with bricks suggesting our historical legacy. But over the years, due to the aging and resettling of bricks, more and more brick-paved sidewalks have become increasingly uneven, and in many blocks there are large sections of missing bricks.

Although there are perhaps more urgent matters facing our community these days, oftentimes it is the minor or “no-brainer” challenges that must be dealt with. If we are to continue being good neighbors, the repair of our sidewalks — by leveling or replacing missing bricks — is a must. These repairs need not be considered major undertakings. They are more equivalent to the fixing of leaking faucets or toilets. We homeowners do those kinds of repairs “automatically” — so why don't we make a more coordinated effort to keep our sidewalks safe?

**Remember: if a passerby falls & gets hurt in front of your home, you could be liable.**

Perhaps a team of SHCA volunteers would be willing to assemble a list of our community's most unstable or unsafe pavement areas. With such information on hand, we can pro-actively correct those problems by reminding property owners that they are legally responsible for dangerous sidewalk conditions in front of their homes. Another idea is to ask our Block Captains to assemble such a list block by block. Or, since our Spring Clean-Up Day is coming up on Saturday, May 3rd, perhaps we can ask Clean-Up volunteers to undertake this assessment and provide an up-to-date list of pavements in need of repair.

Finally, let's remember that SHCA's “Contractor's List” can refer contractors who specialize in sidewalk repairs. In fact, if we could begin a neighborhood-wide “program” of these repairs, perhaps contractors would be willing to reduce their rates. (This could be an encouragement to homeowners to “get with the program.”)

Let's improve Society Hill's sidewalks — make them more attractive — and return them to a safe condition in time for our historic area's next big tourist season — spring and summer!

## To The Rescue

Here's a list of contractors, culled from Society Hill's Recommended Contractors, who can repair YOUR sidewalk problem:

Tony Micella  
215-922-6542

Belashov Construction  
610-348-5974

Tom Natalini  
610-449-2147

Premier Building  
Restoration  
215-233-4444

Masonry Preservation  
Group  
856-663-5974

Ron Davis  
215-276-2873

Ricardo Bogado  
215-629-1139

Champ Construction  
215-720-4619

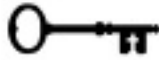


3rd and Pine Streets  
215.925.5968  
www.stpetersphila.org

## Bach Festival Concert Rebecca Maurer on Harpsichord

March 15 at 8:00 pm

For tickets go to  
[www.Bach-Fest.org](http://www.Bach-Fest.org)



Open hearts. Open minds.



# Municipal Bonds

Opportunity is knocking.

Market conditions may make municipal bonds the right choice for your portfolio.

Right now yields on Tax Free municipal bonds are close to yields on taxable Treasury securities—and in some cases may be even higher. Since this has only happened a few times in the past ten years, now is a good time to consult with your financial advisor to determine if municipal bonds are right for you.

Call today for a free report by George Friedlander, Smith Barney Municipal Bond Strategist.

**William F. Landy — CERTIFIED FINANCIAL PLANNER™**  
1600 Market Street, Suite 1200  
Philadelphia, PA 19103  
(215) 446-8688  
[www.fa.smithbarney.com/landy](http://www.fa.smithbarney.com/landy)  
[william.f.landy@smithbarney.com](mailto:william.f.landy@smithbarney.com)

Municipal bonds may not be suitable for all investors. Past performance is no guarantee of future results. This does not constitute a solicitation to buy any particular municipal security.



Depending on your state of residency, some bonds may be exempt from state and local taxes, however, interest may be subject to the federal alternative minimum tax. Bonds are subject to interest rate risk. When interest rates rise bond prices fall, generally the longer a bond's maturity the more sensitive it is to this risk. Bonds may also be subject to call risk, which allows the issuer to retain the right to redeem the debt, fully or partially, before the scheduled maturity date. Proceeds from sales prior to maturity may be more or less than originally invested due to changes in market conditions or changes in the credit quality of the issuer.



### Personal Coaching

Private sessions with a team of experienced trainers.

### Group Cross Training

75 min sessions combining cardio intervals, strength training, yoga and relaxation. See schedule online.

### Fresh Meal Plans

Perfectly balanced, custom calorie, delicious meals.

**!!! FREE WORKOUT !!!**

NE Corner 12<sup>th</sup> & Sansom 215.733.0633  
[www.fusioncrosstraining.com](http://www.fusioncrosstraining.com)

## ★ REVIEW ★ REVIEW ★ REVIEW ★

BY MARILYN APPEL

## Food for Thought: Three Local Restaurants

## SONAM

**223 South Street, 215-922-3092**  
**Sunday - Thursday 5 -10 p.m.**  
**Friday & Saturday 5 - 11 p.m.**  
**Sunday Brunch 10 a.m. - 3 p.m.**  
**Closed Tuesday. All credit cards accepted**

SONAM is “manos” backwards — meaning “hands” in Spanish. It is also a child’s name in both India and Tibet. Ben Byruch, the owner/chef wanted to give his restaurant an international feel, which he has accomplished, not only with its name but also with its menu that expresses the dishes of different cultures. Ben’s training is with the Arts Institute Culinary School. From there he worked at Pod, Trust and several other restaurants in the western suburbs before launching Sonam a few months ago. The restaurant’s decor is modern and elegantly appointed. When you enter, a lounge seating eight greets you, while 44 people can be accommodated in the dining room. Its exquisite, versatile glassware and barware will encourage you to bring more than a bottle of wine. Bring beer, hard liquor, sake... anything. Needless to say, this is definitely a BYOB — with no corkage fees. Dishes range from steak yakitori to open-faced ravioli to chops and chips. How about an Italian egg roll? Or buffalo falafel? Or bouillabaisse scallops? Desserts are fascinating, as is Sunday brunch. A really international menu. Check it out for yourself.

## TORI’S

**119 South Street**  
**215-627-4866**  
**Open daily 4 p.m. – 2 a.m.**  
**All credit cards accepted**

Remember that little restaurant at the corner of Bainbridge and Front Streets called *Tori’s Brickhouse*? Definitely a neighborhood venue, named after Joe and Brenda Lazar’s teenage daughter. Well, it’s no longer on Front Street. *Tori’s* has moved to 119 South Street. Bigger now, the restaurant can accommodate 80 in the dining room and 80 in the banquet room. It’s more elegantly appointed and has a liquor license, but is still relaxed and unpretentious. Joe even built his dream kitchen, where he prepares his hearty but sophisticated southwestern and Mediterranean-style dishes. For an appetizer, try his cornmeal crusted calamari, the quail nachos or the scallops. The soup *du jour* truly lives up to its name, as selections change daily. For an entrée, there’s lobster mac and cheese, a hefty vegetarian sandwich, or a non-vegetarian (choose your toppings) burger. For dessert, there’s *Tori’s* famous Tiramisu or a rich fudge cake soaked with coffee liqueur. The Lazars are self-taught with over twenty years combined experience. They know their neighborhood and will treat you like family.

## SUPPER

**926 South Street**  
**215-592-8180**  
**Open daily except Mondays, 6-11 p.m.**  
**Sunday Brunch 11 a.m.- 4 p.m.**  
**All credit cards except Discover**

Mitch and Jennifer Prensky are partners in marriage as well as in their new restaurant, *Supper*. In addition to recently opening this casual and comfortably upscale American restaurant, they operate the *Global Dish*, an award-winning catering business at 7th and Kater Streets. Mitch was formally trained as a chef at New York City’s French Culinary Institute, and he worked in several prestigious restaurants before leaving the “Big Apple.” A recent review by Craig LaBan in the *Philadelphia Inquirer* gave *Supper* three bells.

The entire menu revolves around their “Plate” concept — such that each plate is smaller than an entrée but larger than an appetizer. It’s recommended that you select three “plates” to make your “supper.” Here’s a taste of the menu (pun intended). Try the carrot and tangerine soup with soft coconut marshmallow. For your “main course” try Tasmanian sea trout with apple cider, parsnips and brussels sprouts, or the braised lamb shanks. Their innovative homemade desserts include chocolate sorbet with raspberries and roasted beets. BYOB the first Sunday in every month.

Creating harmony in body and mind

*Judy Moon*  
and Associates

CONVENIENT, RELAXING MASSAGE THERAPY  
 Washington Square South  
 in the Hopkinson House

ABMP Certified 267.671.0861 www.judymoon.com

**THERAPEUTIC MASSAGE THERAPY**  
 also ask about *Ion Body Detoxification*

**Greg DiTeodoro**  
 B.S., CMT (Member ABMP)

Visit my website:  
[www.gдитеodoro.neomassage.com](http://www.gдитеodoro.neomassage.com)  
 and book an appointment online!

OR call 267-254-3463  
[gдитеodoro@aol.com](mailto:gдитеodoro@aol.com)

Office Located in Society Hill  
 (Gift Certificates Available)

## SAFE AND SOUND IN SOCIETY HILL

## Society Hill Crime Report

Always turn on your security alarm system when away from home or when asleep.

Society Hill is essentially a safe neighborhood. But as part of a major city, where criminal incidents do occasionally happen, we remind you to take appropriate measures to protect yourselves and your homes. For example, always turn on your security alarm system when away from home or when asleep.

Below is a summary of recent incidents culled from the Philadelphia Police Department's Sixth District.

**Burglaries:** From October 22 to January 17, four homes were broken into.

- 200 block of S. 3rd Street and 600 block of Pine Street — forced entry gained through rear windows when **alarms were not in use**. Computers and jewelry stolen.
- Blackwell Court — forced entry through front door, when **alarm was not in use**. Laptop and jewelry taken.
- 200 St. Josephs Way — forced entry through front door when **alarm was not in use**. Computer and jewelry taken.

During this time period, two attempted rear-door entries were foiled by security alarm systems — on the 600 block of Spruce Street

**Thefts:** From October 1 to November 21, five thefts were reported.

- Three thefts involved stolen bicycles.
- Shockingly, American flags were stolen from the Vietnam War Memorial on Front Street.
- On Lombard Street at the Presbyterian Historical Society's parking lot — a roofing company had its equipment stolen.

**Street Robberies:** From October 29 to December 31, four robberies were reported. All occurred in the evening hours.

- At 8th & Spruce Streets — man's wallet stolen as he was entering a taxi. (Offender caught and charged.)
- 600 block of Addison Street — a man grabbed a woman's purse. She struggled to hold on, but was knocked to the ground.

*Warning:* Don't risk your well being. If ever caught in such a situation, give up your purse.

- At the Ritz Movie Theater — a wallet was stolen from a woman's handbag — inside the theater.
- On the 200 block of S. 5th Street — at 11 p.m. a group of youths attempted a robbery and assault of an older man.

**Thefts from Autos:** From October 27 to January 27, fourteen automobile thefts were reported from the following blocks:

- 300 S. 6th Street, two incidents; 400 S. 6th Street; 200 & 400 blocks of Lombard Street; 100, 300, & 400 blocks of Spruce Street; Front & Dock Streets; 400 block of Pine Street; 500 block of Walnut Street; 400 Locust Street; 200 block Willings Alley, three incidents; 200 block Thomas Paine Place.

Only one of these cars was unlocked. The others had their windows smashed — most involved theft of currency, GPS systems or personal items, such as visible Christmas packages. There may have been additional auto thefts not reported to police. Remember to report any incident.

### Martin Bernstein

Realtor Associate

**Recognized.  
Respected.  
Recommended.**

**Plumer**  
& Associates, Inc.  
Realtors

226 South Street Philadelphia Pa.

215. 922. 4200 X 316 office

215. 870. 0646 mobile

[mbernstein@plumer.com](mailto:mbernstein@plumer.com)

**Call Martin...Leave nothing to chance.**



*Providing an Elementary  
Catholic Education  
in the Heart of  
Historic Philadelphia*

- Since 1782 -



Fifth & Locust Streets  
Philadelphia, PA 19106

215.923.7522

[www.saintmarys.us](http://www.saintmarys.us)

**SAINT MARY'S**  
Interparochial School

SAFE AND SOUND IN SOCIETY HILL

## Safety Tips

These “Tips” are recommended for your safety and peace of mind.

**Lighting:** Nothing discourages criminal action more than bright light. Many homes have front-door lights. It’s preferable to have these front lights turned on automatically by a timer and left to shine from dusk to dawn. Motion sensor lighting in the back of the house is also recommended. Timers to turn on your TV and interior lights will also give the impression that you are home — to deter crime.

**Security Alarms:** Four out of five burglary statistics indicate that either houses lacking security systems or those that have alarms not turned on, are the homes that get broken into.

**Locks:** Deadbolts are the best defense. Keep doors locked at all times, even if you are only visiting next door. It is also recommended that homes have intercom systems installed

— so when the doorbell rings, you can ask “Who’s there?” Never fall for typical scams, such as: “My car stalled and I can’t get it started. Your neighbor sent me over.” Regarding window locks — either with a lock or a pin — be sure you can get to safety easily in case of fire or other emergency.

**Newspaper Deliveries:** An obvious way for any thief to realize that you are not home is to have newspapers piled up on your doorstep. Remember to stop delivery or ask a trusted neighbor to pick up your papers when you’re going to be away.

**Call 9-1-1 Immediately:** If you think your home has been entered without your permission, STAY OUT. Never risk confronting a burglar in your home.

**Request a Police Security Survey:** Call 215-686-3063 and a Sixth District Police Officer will come to your house to give you individualized security tips specific to your residence.



*Janey's  
neighborhood  
realtor is . . .*

**Call Jeff “City” Block for all your  
Center City real estate needs.**

 **Prudential**  
Fox & Roach  
REALTORS®  
215.546.0550

Direct Line - 215.790.5662  
jeff@jeffcityblock.com



**JEFF CITY.**  
 CENTER CITY'S REALTOR **BLOCK**

ASSOCIATE BROKER



**Constantine O. Stephano, MBA**

Financial Advisor

**Advanced Advisor Group**

Ameriprise Financial Services, Inc.  
233 South Third Street  
Philadelphia, PA 19106-3911  
Bus (215) 923-8995  
Fax (215) 925-5218  
Mobile (267) 258-7820  
constantine.o.stephano@amfi.com

# I Can Help You Find Opportunity Where Your Personal and Business Life Meet.

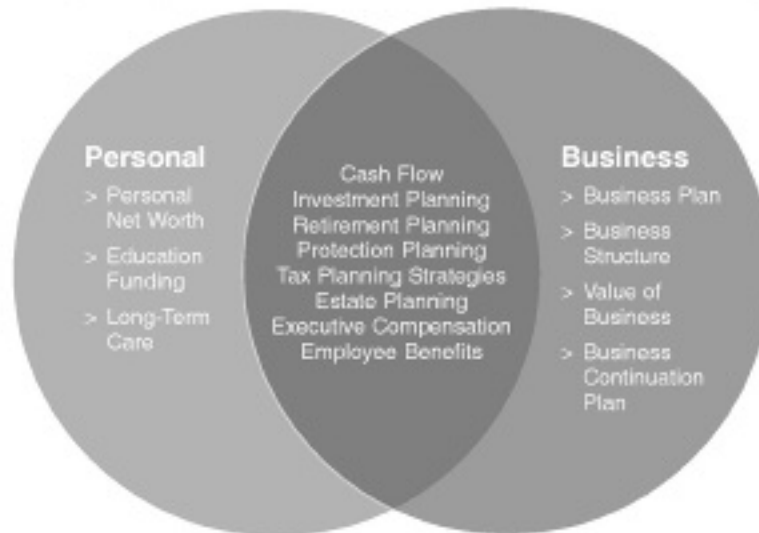
If you're a business owner, we need to talk. I can help you use your business to reach your personal and family financial goals through planning that evolves to meet your needs. With my help to implement it, you can gain peace of mind addressing issues like education funding, protection for your family and business, tax savings, a succession plan and investing to provide for the secure retirement you've dreamed about.

As a member of the Society Hill Civic Association, I offer you the opportunity to meet with me at your convenience. No hard sell, no obligation – I would just like to discuss your goals and see if I can help you reach them faster and more directly. The initial consultation provides an overview of financial planning concepts. You will not receive analysis and/or recommendations.

To schedule your complimentary initial consultation, call me at 215-923-8995 or complete and mail the confidential form below to my office.

You'll be glad you did!

## Integrating Personal and Business Financial Planning



Financial advisory services and investment solutions available through Ameriprise Financial Services, Inc., Member NASD and SIPC. Ameriprise Financial Services, Inc. makes insurance and annuity products available through Ameriprise Financial Services, Inc., or licensed affiliates.

DETACH HERE

Name \_\_\_\_\_

Home Address \_\_\_\_\_

City \_\_\_\_\_ State \_\_\_\_\_ Zip \_\_\_\_\_

Email \_\_\_\_\_

Home Phone \_\_\_\_\_ Business Phone \_\_\_\_\_

Best time to call \_\_\_\_\_ am / pm

**About Your Business**

1 – Type:  Retail  Wholesale  Manufacturer  Professional/Service

2 – Structure:  Sole Proprietor  Partnership  S-Corp  C-Corp

3 – Your Percent of Ownership: \_\_\_\_\_ %

4 – Number of Employees:  1-49  50+

5 – Approximate Value of Your Business:  Under \$1 Million  \$1-\$5 Million  Over \$5 Million

6 – Do you have a Succession Plan in Place?  Yes  No

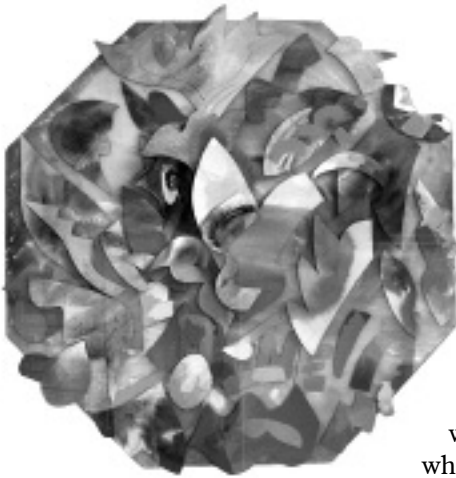
Detach and Mail to: Contantine Stephano, Ameriprise Financial Services, Inc., 233 South Third Street, Philadelphia, PA 19106-3091



## ACCIDENTAL TOURIST IN MY OWN CITY

BY JANE BIBERMAN

## The Two Sams



**Sam Maitin's colorful collage welcomes all who visit Sam Fleisher's Art Memorial.**

To invite the world to come and learn art!

A joyful collage by Philadelphia's most beloved artist, the late Sam Maitin, welcomes students and visitors to the Samuel S. Fleisher Art Memorial at 719 Catharine Street.

The piece hangs in the foyer over the words: "To invite the world to come and learn art!" which was the vision of the center's founder. "Sam took the famous free

Saturday afternoon and evening classes throughout his years at Gratz High until he graduated at sixteen in 1945," relates his widow, Lilyan. "At that time, it was called the Graphic Sketch Club," she says, adding, "In the early 70's, Sam painted an outside wall there. It was one of the first murals in the city."

One of Society Hill's "earliest pioneers," Sam purchased a large, old Pine Street house in the early 60's, which he restored as a place to live, paint, and raise his family. His many posters, sculptures and murals are sprinkled throughout

the city, and the large, dimensional mural he completed before he died a few years ago will be installed in the new Please Touch Museum — expected to open in Fairmount Park's Memorial Hall this coming fall.

Sam was my dear friend and colleague during the twenty years I was editor of *INSIDE* magazine, to which he contributed countless covers. But I knew Fleisher long before I knew Sam. In fact, when I myself was a teenager in the late 50's, my mother drove me to the center's Saturday afternoon classes from our home in West Mt. Airy. When I moved to Washington Square ten years ago, I enrolled in evening drawing classes at Fleisher, which is much more than an art school. It's a cultural oasis. This past winter, I attended a concert by the Philadelphia Chamber Music Society in the center's lovely Romanesque-style sanctuary. And just a few weeks ago, I went to a gallery reception hosted by Philadelphia artist Diane Burko and her husband, Richard Ryan, whose art works were exhibited in Fleisher's prestigious "Wind Challenge," a juried competition for area artists. *continued on page 27*



Nearly 5,000 students study at the Fleisher Memorial classes every year. Many will become famous artists.



**ACTIVE**  
*The Gramercy*

**210 South 13th Street** By Appointment Only  
Create and design your own New York Loft style condo  
1800 sq ft is ready for you to choose finish package  
(includes granite/ stone/travertine counter tops;  
custom cabinets & lighting) or customize.

Unfinished 1st floor	\$1,500,000
Commercial space (3,000 sq ft)	
Finished Second Floor	\$849,000
Finished Fourth Floor	\$895,000
Finished Fifth Floor	\$995,000
Finished Sixth Floor	\$1,200,000
Penthouse; fabulous roof deck	
Model: Finished Third Floor	\$880,000
Spectacular high-end custom finish	

**SOLD (LIST PRICE)**

<b>241 South Third Street</b>	<b>\$1,060,000</b>
<b>238 South 3rd St #3</b>	<b>\$450,000</b>
<b>325 South 2nd Street</b>	<b>\$895,000</b>
<b>1013 North 4th Street</b>	<b>\$424,000</b>

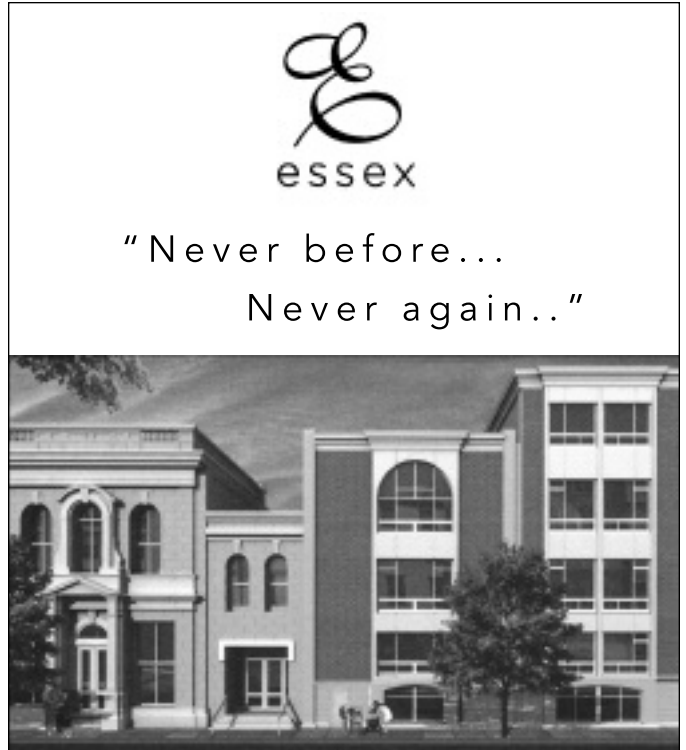
Buyer & Seller Representation  
37 Years Your Neighbor  
20 Years Your Realtor  
Call for a market property valuation

**Lives! Knows! Sells!  
Center City**



**Plumer** & Associates, Inc.  
Realtors

**Jan Stephano**  
215.922.3600 x219



"Never before...  
Never again.."

**The Essex Condominiums**  
Old City • 3rd & Vine

- 18 private boutique condominiums
- Unique Floor plans
- Flats, Bi-Level, Tri-level residences
- 20-foot ceilings\*
- Kohler® fixtures and Viking® appliances
- Imported porcelain tile kitchen and bath
- Cherry wood floors throughout
- Wood wainscots
- Dramatic coffered ceilings
- Private roof terraces and balconies\*
- Enclosed, secured parking space
- Keyless entry
- 10-year tax abatement

Contact:  
**George J. Cahill**  
(215) 783-8731  
**Cathy Conricode**  
(215) 359-5307  
**Michelle Burns-McHugh**  
(215) 901-6608



gcahill@georgecahill.com  
www.essexcondominium.com (215) 351-7437

Information deemed reliable but not guaranteed  
\*select units only

AYER

**CONDOMINIUM ON  
WASHINGTON SQUARE  
IN HISTORIC SOCIETY HILL**

THE MOST EXTRAORDINARY  
RESIDENCE IN PHILADELPHIA


OPEN FOR LIVING  
FROM \$900,000 TO \$5 MILLION

210 W. WASHINGTON SQUARE  
**215 923-4441**

CALL FOR AN APPOINTMENT  
LAURIE PHILLIPS  
PRUDENTIAL FOX & ROACH  
A GOLDENBERG GROUP & BROWN/HILL JOINT VENTURE

WWW.THEAYER.COM

OPEN HOUSE  
SUNDAY  
3 - 5



**Fleisher Art Center**

*continued from page 25*




This unique cultural resource is the legacy of the civic-minded Philadelphian, Samuel S. Fleisher, who founded the Graphic Sketch Club in 1898. It is the oldest free community art school in the United States. Nearly 5,000 students study here every year, including some 600 low-income public school children who participate in its Community Partnerships in the Arts programs. Many will become famous artists like Sam, whose fellow alumni include Louis Kahn, Albert Paley, Frank Gasparro and Charles Santore.

Sam Maitin and Sam Fleisher shared many of the same values. The artist and the philanthropist both believed that art should be accessible to everyone, and both were community leaders. Maitin, although not wealthy, contributed his artwork to many worthy causes. Fleisher, son of German-Jewish immigrants and a prosperous mill owner, enabled working-class adults, immigrants and their children to access the arts. In the early years of the 20th century, he began buying buildings along the 700 block of Catharine Street to create a cultural home for the public. He invited neighborhood residents to art classes and concerts and displayed his personal art collection in the former Church of the Evangelist, which he called the Sanctuary. Today the chapel still contains medieval statues, an altarpiece by Violet Oakley, a stained-glass window by John LaFarge, an iron



gate by Samuel Yellin and murals by Nicola D'Ascenso and Robert Henri.

This spring, students and teachers will exhibit their work in the Dene M. Louchheim Galleries, open Monday to Friday, 11 a.m. to 5 p.m. and additional hours when school is in session — Monday to Thursday from 6:30 p.m. to 9:30 p.m. and Saturday from 10 a.m. to 3 p.m. For more information, call 215-922-3456 or visit [www.fleisher.org](http://www.fleisher.org). Better yet, stop by and pick up an issue of *Freehand*, including the new schedule of classes: "Come and learn art!"

Society Hill Address for Luxury  
521 Pine Street  
3 ultra luxurious full floor residences feature Italian Schifini kitchens, spa-like Duravit baths, private outdoor spaces, and so much more. These 1-of-a-kind homes will be briefly available and start at \$725,000



The Atacan Group is currently ranked #1 in Pennsylvania & #8 of all 78,000 Keller Williams Realtors in the USA. Antonio is consistently ranked one of the top selling Realtors in North America.


To find out what your home could be sold at  
[www.SocietyHillHomeValues.com](http://www.SocietyHillHomeValues.com)

Antonio Atacan 215-917-1213 Brokerage 215-627-3500

To see every MLS Center City Home for sale visit Philly's #1 website: [www.CenterCityRealEstate.com](http://www.CenterCityRealEstate.com)

Every MLS Society Hill house sold From January-December, 2007		Front Street thru 7th Street, Pine Street thru Walnut Street	
500 block of Cypress	\$410,000	700 block of Spruce	\$920,000
Willings Alley Mews	\$465,000	200 block of S. 3rd St	\$955,000
200 block of Pine	\$470,000	200 block of St. James Place	\$955,000
300 block of S. American	\$565,000	200 block of Pine	\$965,000
Willings Alley Mews	\$585,000	500 block of Delancey	\$975,000
300 block of S. 3rd St	\$603,000	200 block of S. 3rd St	\$975,000
300 block of S. 2nd St	\$605,000	500 block of Delancey	\$990,000
300 block of Cypress	\$630,000	200 block of Delancey	\$1,100,000
200 block of Spruce	\$640,000	300 block of St. James Place	\$1,100,000
300 block of S. 2nd St	\$649,900	300 block of S. Phillip St	\$1,140,000
300 block of Delancey	\$650,000	200 block of St. Josephs Way	\$1,200,000
500 block of Lombard	\$660,000	500 block of Pine	\$1,222,450
300 block of S. 6th St	\$675,000	400 block of Pine	\$1,250,000
300 block of Cypress	\$680,000	600 block of Spruce	\$1,320,000
700 block of Spruce	\$690,000	200 block of Spruce	\$1,537,500
600 block of Pine	\$700,000	600 block of Spruce	\$1,725,000
500 block of Spruce	\$740,000	400 Block of Spruce	\$1,925,000
300 block of S. American	\$800,000	200 block of S. 4th St	\$2,575,000
200 block of Spruce	\$815,000		
<b>Total Townhouse Sales: 37      Average Sale \$967,128</b>		<b>Average Days on Market: 89</b>	

COMMITMENT  
INTEGRITY  
SERVICE



**Gail Trimble, ABR**


Buyer & Seller Representation

**Plumer & Associates, Inc. Realtors**

215.922.4200 ext.302  
gtrimble@plumerre.com  
226 South Street  
Philadelphia, Pennsylvania 19147

**Townhouse  
or  
Condominium**

*"We provide creative solutions to meet today's Real Estate Challenges"*



**Mary Genovese Colvin**  
Broker Associate


**Margaux Genovese Pelegrin**  
Sales Associate

Over 20 years of residential experience offering aggressive marketing for your property.

Talk (215) 806-1500  
Office (215) 440-8198


Talk (215) 205-2400  
Office (215) 521-1564

90% of our business comes from friends telling friends!



**Kathy, Patrick and the Conway Team**

Recent Recipients of the most prestigious award attainable "The Pinnacle Award." This award is reserved for the Top Ten Prudential agents nationwide out of 68,000 agents in the entire U.S.A.

 Prudential  
Society Hill  
215.627.6005  
www.conwayteam.com

KATHY 215.440.8190  
kathy@conwayteam.com  
PATRICK 215.440.8172  
patrick@conwayteam.com

Independently owned and operated member of the Prudential Real Estate Affiliates, Inc.

For more information about our listings Visit Us: [www.MaryOnTheSquare.com](http://www.MaryOnTheSquare.com)



Flawless Society Hill Townhouse  
New Renovation w/ Home Theater - \$1,775,000



Society Hill French Revival  
2 Car Garage Plus Garden - \$1,801,000



Society Hill Federal Townhouse  
5,000 sq. ft. w/ 2 Car Garage & Garden - \$2,950,000

 **Prudential**  
Fox & Roach REALTORS®

An Independently Owned and Operated Member of The Prudential Real Estate Affiliates, Inc.  
215-893-9800



---

**THE CASSEY HOUSE RESTORATION SAGA**


---

BY JANINE AND BARRY ARKLES

## Surprises Lurked Within the Walls

If you have been walking by 243 Delancey Street for the last two years and wondering when its restoration would finally be completed.... Well, we're nearly done — and what an exciting adventure this has been!

When cracks appeared in the front façade, the tenor of the initial restoration drastically changed. As walls were stripped from the inside to better evaluate their integrity, it was discovered that all four structural walls were failing. The restoration focus suddenly changed from minor interior modifications to major structural engineering. The estimated time to move in suddenly shifted to 'sometime in the future' — providing us with ample opportunity to spend time researching the history of the house. After many trips to the Athenæum of Philadelphia, The Library Company of Philadelphia, The Historical Society of Pennsylvania, The Philadelphia Historical Commission, The Philadelphia City Archives, plus various Internet searches and the amassing of a bookshelf collection of reference materials, we were able to date the house to the 1780's, and discovered that a famous family had lived there for several generations.

From an architectural perspective, the house's gambrel roof is a style of Swedish architecture adopted by the English when they took over New Sweden (later to be known as Philadelphia) in 1682. It is a roof with two slopes, the lower slope steeper than the upper slope. Only a few remaining examples of this Swedish architecture can be seen in Society Hill, such as at 217 Delancey (the Rhoads-Barclay House). The house at 243 Delancey Street is actually an even rarer example of a half-gambrel roof with the original dormer window. Other half-gambrels can be seen at The Man Full of Trouble Tavern (1759), Drinker's Court (1756), Bell's Court (c. 1810), and behind the Nicholas Biddle House, south of Washington Square.

Besides the uniqueness and historical significance of the half-gambrel roof design, the Cassey House is also an example of a "flounder house" — a residential structure with a tall, windowless side wall reminiscent of the eyeless side of the flounder, and a half gable roof resulting in one wall being taller than the opposite wall.

Anachronistic changes to the house were made around 1965 by Adolph De Roy Mark,

an architect instrumental in the 1960's restoration of Society Hill. He added a window on the side of the house, excavated a grotto in front, added the two prominent courses of brick on the front façade, and created a loft area above the third floor.

The house carries the name of "The Cassey House," and for several generations the Casseys lived there — through the 1800's and into the 1900's. The Cassey family of Philadelphia, and the related Williams' of New York City, were African-American church leaders and activists from the early 1700's through the 1800's who were involved in anti-slavery, abolition of slavery, anti-colonization, and civil rights efforts, while also demonstrating uncanny business sense resulting in wealth creation and prosperity, to lead elite, high-status lives. They wielded their significant influence in civic duties, social responsibility, intellectual activism, promotion of education, religious and community service, as well as philanthropy.

*continued on page 31*



**An 1823 engraved ad for Joseph Cassey's barber shop at 36 South 4th Street states: "Keeps a general assortment of perfumery, scented soaps, shaving apparatus, ladies work and dressing boxes, fine cutlery..."**

Courtesy The Library Company of Philadelphia

**The Cassey House, 243 Delancey Street**



## In Society Hill Real Estate



One Name. One call.

# Izzy Sigman

Phila Board of Realtors  
Diamond Award Winner 2006

Outstanding service & results.  
Every time.

### Recent Sales

339 S 2nd St                      2200 Arch St #501  
104 Lombard St                706-08 Marshall St  
26G W Soc Hill Towers

### Current Listings

126 Delancey St                1326 Spruce St #1505  
Unit 225, Pier 5                615 Pine St  
1243 S Philip St                524 Kauffman St



**Plumer**  
& Associates, Inc.  
Realtors

### Call Izzy Sigman

215-922-3600 x 228 Office  
215-806-6958 Mobile

226 South Street



## Thinking of Selling?

Call Mike McCann, "The Real Estate Man"

#1 Prudential Sales Associate  
in the *entire United States*  
in 2004, 2005 & 2006!

#13 Team in the US as seen in *The Wall Street Journal*  
—Over 600 Homes Sold in 2006!

Get a FREE, no-hassle estimate of value  
*Your home may be worth more than you think!*

**Seller's Hotline    Buyer's Hotline**  
**215-778-0901      215-440-8345**

Take a virtual tour of Mike's listings online. Visit [www.mccanniteam.com](http://www.mccanniteam.com)

- |   |                       |
|---|-----------------------|
| <b>253 S 3<sup>RD</sup></b>   | <b>\$1,050,000</b>    |
| Beautiful I.M. Pei 4BD/3.5BA home, secure lot parking, hardwood floors, recessed lighting, built-ins, 2 Juliet balconies, finished basement, wood-burning fireplace   |                       |
| <b>143 S 2<sup>ND</sup> - THE MORAVIAN</b>  | <b>FROM \$995,000</b> |
| 2units in a fabulous, new construction condo building, high ceilings, breathtaking lobby, all 2BD, 2.5BA units w/ fireplaces and 1 car parking and 10 year tax abatement pending.   |                       |
| <b>1011 CLINTON #4</b>  | <b>\$950,000</b>      |
| Fabulous 3BD/2.2BA condo, totally renovated, custom finishes, den, gas fireplace, Juliet balcony.   |                       |
| <b>112 LOMBARD</b>  | <b>\$950,000</b>      |
| Fantastic 3BD/2.5BA with garage, den, new hardwood floors, marble fireplace, moldings, French balcony, deck, recessed lighting.   |                       |
| <b>1016 SPRUCE #3</b>   | <b>\$800,000</b>      |
| Grand 4-5BD, 3BA, tri-level condo on Strickland Row, was originally 2 units but has been masterfully combined, hardwood floors t/o, w/ wood burning fireplaces, huge kitchen, gorgeous master bedroom suite, c/a, common pool and roofdeck. |                       |
| <b>102 LOMBARD</b>  | <b>\$779,900</b>      |
| Marvelous 4-story colonial with 3BD/2.5BA, gated front, track lighting, beautiful kitchen with stainless steel appliances, wine cooler and wine rack, 2-story dining room, garage parking.  |                       |
| <b>512 ADDISON CT</b>   | <b>\$749,900</b>      |
| Clean, well-maintained, 3 BD, 2.5 BA, garage and driveway, large formal dining area, roofdeck, landscaped, private red-brick courtyard, hardwood floors throughout, and a cozy gas fireplace.   |                       |
| <b>1035 LOMBARD #10</b>   | <b>\$554,900</b>      |
| Lovely 4BD/3BA private landscaped courtyard community, finished basement, refinished wood floors, fresh paint, new roof and roof deck and parking! Without parking \$509,900.   |                       |
| <b>1011 CLINTON #3</b>  | <b>\$350,000</b>      |
| Stunning bi-level 1BD/1.5BA, completely rehabbed, hardwood floors, gas marble fireplace   |                       |
| <b>200-10 LOMBARD #630 - ABBOTT'S SQUARE</b>  | <b>\$349,900</b>      |
| Corner 1BD, 1.5BA nice living room, dining room and balcony, indoor garage, 24 hour concierge.  |                       |

### CALL MIKE McCANN "The Real Estate Man"

For Personalized Service and Fast, Efficient Results.  
Serving the Center City Community for 20 Years!



# Prudential

**Fox & Roach REALTORS®**  
215-627-6005 / 215-440-8345

[www.mccanniteam.com](http://www.mccanniteam.com)

An Independently Owned and Operated Member of  
The Prudential Real Estate Affiliates, Inc.

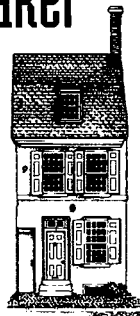


## Your Realtor® For Buying A Home & Selling A Home

B a r i S h o r

# "Real Estate® MatchMaker"

- Bari works harder.
- Works smarter.
- Cares and *delivers* on your Center City Home Ownership dreams.



Call me, Bari Shor, 215-790-5678  
Prudential Fox & Roach Realtors®

At the Rittenhouse, 210 W. Rittenhouse Sq., Philadelphia, PA 19103 215-546-0550

# REALTORS ON-SITE 215-MY-CONDO www.thecondoshops.com

dennis@thecondoshops.com  
chelsea@thecondoshops.com

At THE CONDO SHOP we realize just how important it is to be a part of the community - your community! As real estate experts, we specialize in the sale of condominiums and all residential properties. We believe it is important to be visible and available to help you. So instead of being 'out of sight-out of mind' we are REALTORS ON-SITE finding solutions for you every day.

**BRAND NEW LISTING:**  
SOCIETY HILL TOWERS

210 LOCUST ST. Offered at \$395,000.  
Approx 800 sq. ft.

LARGE 1 BR /1 BA CORNER UNIT ON HIGHER FLOOR IN ALREADY ESTABLISHED BUILDING. Top Of The Line Craftsmanship - Brazilian Cherry Hardwood Floors, Stainless Steel Appliances, Striking Kitchen w/Custom Granite Countertops, Illuminated Ceiling Moldings, Washer/Dryer

**BRAND NEW LISTING:**  
2601 PENNSYLVANIA AVE

ART MUSEUM AREA. Offered at \$415,000.  
Approx 1,500 sq. ft.

Grand 3 BR/2 BA CORNER UNIT LOCATED AT THE PARKWAY CONDOMINIUMS IN THE ART MUSEUM AREA. 1 Half Block from the Museum of Art. Breathtaking Views of the Museum, Fairmount Park, and Center City Skyline. Features include \* Covered One Car Parking \* Hardwood floors. \* Large Open Kitchen \* Bright Exposures\* Washer/Dryer



215.692.6636

AT SOCIETY HILL TOWERS

## Cassey House

continued from page 29

Progress on the restoration was facilitated by an historically informative evaluation by the late Penelope Batchelor — a long-time Society Hill resident who was Historic Architect for the National Park Service; the inspection by two architectural engineering firms; the efforts of a construction firm, Clark Brothers, who were featured in *Philadelphia Magazine* for their restoration activities in the city; as well as a descendant of the Cassey family: Dianna Cassey-Warner, an architect who contributed to the restoration of the Freedom Theater, the building of the National Constitution Center and the restoration of her ancestral home.

We feel very fortunate, not only to be living in such an incredible neighborhood, but also to be caretakers of such a significant slice of history as “The Cassey House.”

### About Janine and Barry

Janine and Barry Arkles “absolutely LOVE Society Hill.” The couple, married for fifteen years, both have long-standing connections to Philadelphia. Barry, a third-generation native, grew up at the end of Elfreth’s Alley. As a young lad, he would tightly hold onto his grandfather’s hand as they walked down 2nd Street to Abbott’s Dairy through that very “scary” section of Society Hill. Janine has been totally charmed by Philadelphia ever since her arrival here as a student, but she was surprised to learn recently that the “black sheep” branch of her family had early 1700’s connections with the area. Fortunately, they moved on to Lancaster and then to Ohio.

## NATIONAL WATCH & DIAMOND



**OVER 300 PRE-OWNED ROLEX IN STOCK**

Also Cartier, Breitling, Ebel, Patek, Vacheron, Audemars and a Large Assortment of Diamond Bezels and Dials.



*Buy with Confidence  
from an Established Store!*  
**1,000 Certified Diamonds  
GIA, EGL & AGA**

N.W.E. is not an official Rolex dealer and Rolex's warranty no longer attaches.

**8th & Chestnut Streets, Philadelphia, PA 19106**

Visit Our Web Site: **nationalwatch.com**

**1-215-627-WATCH**

**The Kelly Team**  
**Plumer**  
 & Associates, Inc.  
 Realtors  
 215.922.4200 x 242  
 TKelly@PlumerRE.com



Gail Finnegan      Trish Kelly      Francisco Carreno

**Three Agents Working for You**

Representing Buyers and Sellers  
 for over 10 years. 


**Plumer & Associates, Inc.**  
**Realtors**

**Plumer**

Center City's largest  
 independent Realtor.  
 Serving Philadelphia since 1923.

**Residential,  
 Commercial,  
 and Investment  
 Real Estate**

For a complete listing of Center City  
 properties visit our website:  
[www.plumerre.com](http://www.plumerre.com)



226 South Street, Philadelphia  
[info@plumerre.com](mailto:info@plumerre.com)  
**215 922 4200**



**PAMELA D. LAWS**  
 ABR, ALHS, SRES, ASP

Top 6% of all Realtors in Prudential Network Nationwide  
 Accredited Luxury Home Specialist  
 Diamond Award



**DESTINATION: HOME**



**Fox & Roach**  
**REALTORS®**  
 215.546.0550

215.790.5688 | [pam.laws@prufoxroach.com](mailto:pam.laws@prufoxroach.com)  
[WWW.PHILADELPHIAPROPERTIES.NET](http://WWW.PHILADELPHIAPROPERTIES.NET)

An independently owned and operated member of the Prudential Real Estate Affiliates, Inc. 



NOMINEES NEEDED

# SHCA's Annual Elections Wednesday, May 28

Our civic association will be electing officers and directors at its annual meeting in May. Nominees to be elected for a one-year term will be the President, five Vice-Presidents, the Secretary and Treasurer. Also, members from each of Society Hill's four quadrants will elect one director for a three-year term.

Individuals will be nominated for these positions next month by the Nominating and Elections Committee. If you wish to be considered by that committee for any of these positions, or if you wish to recommend another member for nomination, please contact SHCA's Administrator, Matt DeJulio, whose phone and email address are listed below.

Additionally, a person may be nominated by a petition signed by ten current SHCA members. Please note that in the case of a petition regarding a quadrant directorship, the ten signers must reside in that quadrant. Petitions should be mailed to SHCA at P.O. Box 63503, Philadelphia, PA 19147, and must be received by Friday, March 28, 2008.

Please note that the names of all individuals nominated will be listed in the May issue of the *Society Hill Reporter*, and the election of officers and quadrant directors will take place at the May General Membership Meeting scheduled for May 28th.

If you have any questions regarding this election process, please contact Matt DeJulio at 215-629-1288 or mattdejulio@aol.com.

## SHCA Membership Reaches 838

We encourage all residents to consider active participation in our civic association. As of early February, a total of 838 residents belong to SHCA —749 renewals and 89 new members. We are still waiting to hear from 250 residents whose memberships have lapsed.

Remember that this year it is easier than ever to renew. You can either mail us a check, send us your credit card number, or go to our website and pay by PayPal.

Last year SHCA's membership reached 1,062. So, if all 2007 members renew (and we certainly hope so!) we will exceed that impressive number of total members.

Most of SHCA's income is raised through membership dues. So please send in your renewal today. Not yet a member? We hope you'll join and support our important work. Note: Additional contributions are always welcome and can be earmarked for specific association activities of your choice.

## SOCIETY HILL CIVIC ASSOCIATION

### Membership Application

Name \_\_\_\_\_

Address \_\_\_\_\_ Apt. # \_\_\_\_\_

City, State, Zip \_\_\_\_\_

Home Phone \_\_\_\_\_

Work Phone \_\_\_\_\_

IMPORTANT: Today most everyone is communicating by email. Be sure we have your most current email address on hand so that you are able to receive important notices in between issues of the *Reporter*. We do not, and will not, SPAM you; all emails are judiciously screened before being sent, and seldom do we communicate this way more than once a week. This also saves SHCA significant postage expense.

Your Email (please print clearly) \_\_\_\_\_

#### Residential Memberships

- \$ 1,000 Benjamin Franklin Benefactor
- \$ 500 Washington Benefactor
- \$ 300 Jefferson Benefactor
- \$ 150 Georgian Grantor
- \$ 100 Federal Friend
- \$ 50 BASIC HOUSEHOLD MEMBERSHIP
- \$ 40 Senior/Student

#### Business Memberships

- \$100 Institutions—  
5+ employees
- \$ 60 Institutions—  
fewer than 5 employees

#### Additional Contributions:

- |   |                            |
|---|----------------------------|
| \$ _____ Washington Square Beautification   | \$ _____ Franklin Lighting |
| \$ _____ Sidewalk Cleaning/Graffiti Removal | \$ _____ McCall School     |
| \$ _____ <i>Society Hill Reporter</i>       | \$ _____ Street Trees      |
| \$ _____ Town Watch/Safe and Sound          | \$ _____ Three Bears Park  |
| \$ _____ Zoning/Historic Preservation       | \$ _____ Penn's Village    |
| \$ _____ No Casinos Near Neighborhoods      |                            |

Total Enclosed \$ \_\_\_\_\_

Charge VISA/MasterCard:

Number \_\_\_\_\_ Exp Date \_\_\_\_\_

Signature \_\_\_\_\_

The following topics are of interest to me. Please email me when these topics have been updated on the website so I may access the up-to-date information.

- |  |  |   |
|--|--|---|
| <input type="checkbox"/> Clean-Up Day    | <input type="checkbox"/> Washington Square | <input type="checkbox"/> Zoning & Historic Preservation |
| <input type="checkbox"/> Franklin Lights | <input type="checkbox"/> Social Events     | <input type="checkbox"/> Fundraising                    |
| <input type="checkbox"/> Dilworth House  | <input type="checkbox"/> Property Taxes    | <input type="checkbox"/> Stamper Square/New Market      |
| <input type="checkbox"/> <i>Reporter</i> | <input type="checkbox"/> Casino Issues     |   |

Return completed application to:

**Society Hill Civic Association**  
P.O. Box 63503, Philadelphia, PA 19147

## NOTEWORTHY NEIGHBORS

BY DAVID WOODS

## Elizabeth and Stanhope Browne

*(aka: Libby and Stan)*


---

“We’ll always have Paris.”

---

—Humphrey Bogart  
in “Casablanca”

You had to be brave and resourceful to be among the pioneers who transformed Society Hill from the way much of it looked, as in the photograph on the facing page, to the way it appears today. Early in their careers Libby and Stan were both brave and resourceful. Like the other stalwarts who bought into famed architect Ed Bacon’s vision of transforming Society Hill into a thriving residential neighborhood, the Brownes bought and renovated their home, a former restaurant, in the early 1960’s.

The couple proudly show a visitor what they call their “vertical residence.” Its living area, in the French style, is located up a steep flight of stairs on the second floor...and the entire house is graced with numerous books, eclectic works of art and tasteful furniture. Actually, French language and culture have played significant roles in their lives. Stan, a graduate of Princeton and Harvard Law School, specialized in international aspects of trusts and estates. This led the couple to spend four years in Brussels during the 1970’s; and between 1999 and 2002, they spent three post-retirement years in Paris “soaking up the history, culture, and romance of France,” as Stan puts it. Libby adds that in the French capital they were fancy free: “No job; no kids; no dog.” Nowadays, the pair return to Paris every few months, renting an apartment there and sometimes renting out their S. 2nd Street house to visiting French families.

The Brownes’ French connection gets even more *profonde*. Stan was Honorary Consul of France in Philadelphia between 1986 and 1996, and he and Libby were both involved in setting up the French International School of Philadelphia, and the Philadelphia Chapter of the French Heritage Society, of which Libby was Chair. A graduate of Wellesley College, Libby taught French at St. Peter’s School; later she became its Director of Development, and subsequently became a tour guide at Fairmount Park Houses, as well as a consultant to Historic Philadelphia, Inc. — the organization that promotes “America’s most historic square mile.”

The couple have two children: Whitney, who runs a website consulting agency in New York; and Katrina, a Boston-based filmmaker who has been in the news lately for her acclaimed feature documentary in which she discovers that her New England ancestors were the largest slave trading family in U.S. history. She and nine cousins retraced the “Triangle Trade,” which was the slave route that went from New England to Africa to Cuba and back to New England. Katrina’s film, entitled “*Traces of the Trade*,” recently premiered at the Sundance Film Festival and is scheduled for release this year for the bicentennial of the U.S. abolition of slavery. (Let’s hope it will be screened at The Ritz.)

When Stan and Libby moved to Society Hill, it was a time they called “the tipping point” for the area’s transformation. The couple quickly became involved in the local scene. Stan became a founding member of what became the Society Hill Civic Association, drafting bylaws for the fledgling organization. It was a time, he recalls, when newcomers often faced challenges. And if you think politics is rife in neighborhood affairs today, it’s nothing compared with the battles that raged during the 60’s. For example, some city planners wanted to ‘welcome the automobile’ with I-95, which would have cut off Society Hill from the riverfront. The Brownes fought tooth and nail for seven years, with Stan heading up a Political Action Committee...and victory — access to the river — was eventually won. Currently Stan is working on a book about the revitalization of Philadelphia’s historic area in the years since WW II.

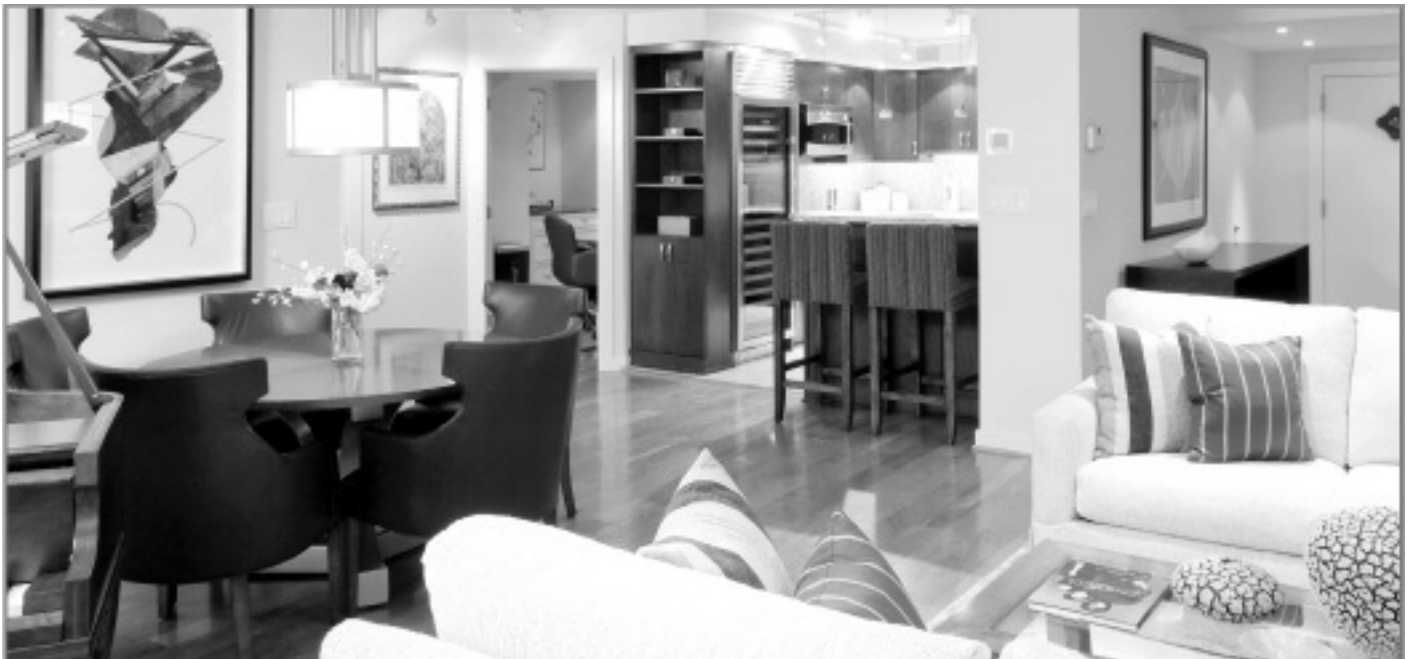
NOTEWORTHY NEIGHBORS

In addition to their ongoing historical preservation efforts, they also enjoy solving crossword puzzles, cooking, fine wines, attending the Wilma Theater and the Philadelphia Orchestra; and, of course, their frequent trips to France.

Libby and Stan, who worked to transform Society Hill, have another “French connection”: they are the worthy successors of Stephen Girard, the transplanted Frenchman who did so much to improve Philadelphia’s style and ambience: the Browne’s live in a house built by Girard in 1816.



**This photo illustrates the 300 block of S. 2nd Street before the neighborhood’s revival, beginning about 1965. The “Time Bar” — that large building depicted at the corner of Spruce Street — has long since been a family residence, as is the case for all houses on the block. The sign on the adjacent 2nd Street historical building features the “Modern Tasty Sandwich Shop,” which is now, of course, another well-loved residence. The Browne’s house is the 4th from the right.**



39 North Third Street  
Philadelphia  
215.925.8225

Residential Design through Construction

**CALENDAR**

Wednesday, March 19

**SHCA Meetings**

See page 1

Saturday, March 22

**Old House Fair**

See page 12

Sunday, March 23

**Easter Egg Hunt Fun**

Three Bears Park, 10 a.m.

See page 13

Wednesday, April 16

**SHCA Board Meeting**

Time & Location to be announced

Saturday, May 3

**Society Hill Clean-Up Day**

8 a.m. - 2 p.m. See page 15

Sunday, May 4

**Society Hill's Annual House & Garden Tour**

See page 15

Wednesdays, May 7, 14, 21

**Tree Tenders Instruction**

See page 19

Wednesday, May 28

**SHCA Annual Election**

for Officers & Directors See page 33

Wednesday, June 4

**Soiree at The Shambles**

See page 16 for information or to volunteer



*The Grand Ballroom*



Founded in 1897

Catering & Conference Center

*Corporate Meetings*

*Social Events*

*Wedding Receptions*

*Holiday Parties*

You and your guests will enjoy renowned cuisine and impeccable service in your choice of seven elegant private dining and meeting rooms.

Call Today For a Personal Tour!

**215•925•2040**

Visit Our Web Site at [www.downtownclub.com](http://www.downtownclub.com)

ACROSS FROM INDEPENDENCE HALL AT 6TH & CHESTNUT STREETS, PHILADELPHIA, PA 19106



SOCIETY HILL

*Reporter*

- Keeping you informed about our community
- Delivered free to your door six times a year
- Produced by your neighbors – all volunteers
- Supported by local advertisers

[www.societyhillcivic.org](http://www.societyhillcivic.org)

*Society Hill and Washington Square's Premier Condominiums*

**Society Hill Towers**

220 Locust Street



Corner two bedroom, one bath excellent condition,

**\$429,900**

**Two Independence Place**

233 South 6<sup>th</sup> Street



Two bedroom and den, high ceilings, upgraded throughout, hardwood floors, balcony overlooking river and city,

**\$895,000**

**Two Independence Place**

233 South 6<sup>th</sup> Street



Penthouse 2 bedroom and den, 2.5 baths, hardwood floors, spacious kitchen, wrap-around terrace, river view, 9 ft ceilings, fireplace

**\$1,475,000**

**Allan Domb Real Estate**

Philadelphia's Largest Luxury Condominium REALTOR®  
**Telephone: 215-545-1500 Fax: 215-545-1090**  
 1608 Walnut Street, Suite 1303, Philadelphia, PA 19103

Internet Address: [www.allandomb.com](http://www.allandomb.com)

We Cooperate With All REALTORS®

