



Box 3, Philadelphia, Pennsylvania 19105

March, 1983

SHCA Submits Critique of Traffic Study to City

The SHCA has submitted its comments on the preliminary recommendations of the Society Hill/Queen Village Transportation Management Study to City Project Manager David Fogel on January 31st. The civic association is critical of the Study's approach and states its disappointment that, with all the time and effort spent by community members, city personnel and the large sum of money spent for consultants, the Study does not tackle the most significant problems affecting the community.

According to the SHCA committee, the Study does not address how existing traffic flows can be limited, better managed or redirected in this historic neighborhood and, furthermore, it does not address the handling of traffic to and from I-95 and the proposed riverfront development. The SHCA opposes the Study for not rerouting I-95 and Delaware Avenue traffic more sensibly. Their new plan would exacerbate traffic flow through the neighborhood and would open Spruce Street to westbound traffic from Delaware Avenue, making this street more a thoroughfare than it is at this present time. The SHCA recommends directing traffic to adjacent commercial thoroughfares such as Vine or Race Streets or Washington Avenue.

The SHCA committee also suggests that the Study establish better management of the traffic destined to our neighborhood, by giving preference for on-street parking spaces to people living in residential areas over commuters parking during business hours and tourists during the evening and on weekends. In order to protect Spruce Street from becoming a westbound thor-

(Continued on page 8)

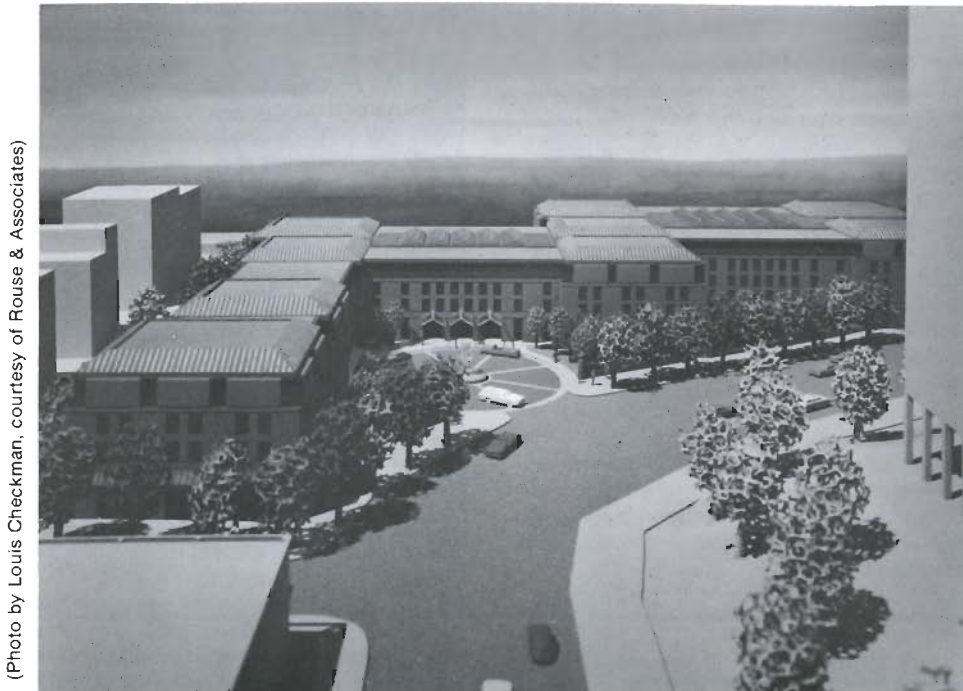


Photo by Louis Checkman, courtesy of Rouse & Associates

The Society Hill Sheraton. An architect's model of the new hotel to be built on Bookbinder's parking lot. View shows the main entrance off Dock Street.

Update

The Bookbinder's Lot Hotel

The Rouse-Sheraton hotel plan for Bookbinder's parking lot which was almost unanimously favored by the membership at SHCA's January 12th meeting was chosen by a selection committee comprised of representatives of the Philadelphia Industrial Development Corp. (PIDC), the City Planning Commission, Redevelopment Authority, Commerce Department, SHCA, and the Olde City Business Association on January 18th.

Rouse & Associates are best known in Philadelphia as developers of the widely acclaimed Stock Exchange building. They are **not** affiliated with the Rouse Corp. of Faneuil Hall and The Gallery fame. Rouse-Sheraton's plan calls for a five-story luxury hotel of 365 rooms with underground parking for 244 self-parked cars. A Dock Street drive-in entrance to both hotel lobby and parking garage will keep traffic on the street to a minimum; there will be shops and restaurants along Walnut Street and another garage entrance on Front Street

for hotel service access as well as guest parking. The red-brick design with setbacks and mansard roofs interrupted by skylighted areas gives the impression of a series of small buildings and is considered more compatible with the neighborhood than were those of the competing Greenwood-Hilton and Pattison-Stouffer groups.

Rouse-Sheraton will probably have no

(Continued on page 8)

MARK YOUR CALENDARS!

There will be a general membership meeting of the Society Hill Civic Association at 8 p.m. on March 16th, at the Old Pine Community Center, 4th and Lombard Streets. Coming up for a discussion and vote will be trash collection for McCall School, whether it should be on Cypress Street, Panama Street, or 6th Street. Come and be counted.

There will also be a discussion on cable TV with speakers from the Los

Angeles Times-Mirror and the Philadelphia Public Access Corporation.

The SHCA Board will meet that evening at 6:30 p.m., also at Old Pine. All members are invited to attend.

On Wednesday, April 13th at 7:30 p.m. at the Old Pine Community Center there will be a SHCA-sponsored Political Forum. Candidates for mayor of Philadelphia have been invited to make a statement and to answer questions.

Notes from the President

The SHCA board voted in January to institute a "block captain" system with Ron Abrams, Dave Stevens and Jim Straw as prime organizers. By establishing a broader grass roots organization, we hope to increase participation, better disseminate information about the Association's activities and improve our effectiveness in handling zoning and other City Code violations, trash and security problems and unannounced actions of the Streets Department and the Parking Authority.

This will provide opportunities for many who have wanted to get involved in the community, but have only limited time to give, and also for those who suffer from civic burnout for past activities, but would still like to make some contribution. Call Ron Abrams at his office (735-2714) if you're interested in participating.

* * *

On February 3rd the Logan Square Neighborhood Association hosted a meeting of representatives from several center city civic groups, including Chinatown, Franklin Bridge North, Society Hill, Center City Residents, Spring Garden and Logan Square. Foremost among the subjects discussed was pending legislation to give the Parking Authority new broad powers over on-street parking, and possible

means of assuring community interests are protected in the new organization. Problems with code enforcement by the Department of Licenses and Inspections and trash pickups were also discussed.

The groups plan to compare notes regularly and to be prepared to act jointly in dealings with City agencies, when they have similar concerns and as circumstances warrant.

* * *

In our efforts to preserve the residential character of our neighborhood, we surprisingly often overlook the fact that Society Hill is historically the most significant neighborhood probably in the entire country. Society Hill is on the National Register of Historic Places as a National Historic District. When the application for that designation was filled several years ago, it indicated there are over 575 historically certified 18th and 19th century commercial, residential and religious structures within its borders.

Essentially by default, maintenance of the integrity of this historical zone as a whole falls on the shoulders of the present residents. This is all the more reason for resisting actions which adversely impact the area for commercial or development purposes.

* * * \

Many residents were encouraged by the flyer entitled "Society Hill—a Neighborhood in Turmoil" distributed in December and "sponsored by the Committee for the Preservation of Society Hill," whose members remain anonymous. Several of its points were well taken and it is difficult to quibble with its principal thesis—that in the last few years the community "has grown complacent due to a lack of neighborly concern." There are, in fact, many individual residents who are concerned and many of them are active in the Association, but greater participation (including by the "Committee" members) is needed to effectively tackle problems as they arise and to more forcefully let decisionmakers know that Society Hill is not principally a commercial destination point or a through route to other commercial areas.

What can you do for starters? Send in the membership application in this issue. Try to make Association general meetings and board meetings. Send your comments or concerns to the *Newsletter* or to me at P.O. Box #3, Philadelphia, PA 19105.

—Steven Miller

BUYERS/SELLERS!!!

FIND OUT WHY

ABNER GREEN

is the unREAL ESTATE BROKER

CALL: 545-1010

Penn's Landing: Watch the Sun Rise Over Camden

They are banging the drums again for Penn's Landing. With only a few months left on its City Hall lease, the Green administration has announced a major effort to find developers for the 37-acre riverfront property. The City is budgeting \$50,000 to spread the word via ads in newspapers and trade journals and to send salesmen around to places where the big-time developers hang out: Dallas, Houston, California, New York and Hong Kong.

They are topping each other with superlatives. Cope-Linder Associates' design for Penn's Landing will make it the city's "crown jewel," a "symbol of the birthplace of American liberty," a "friendly gathering place like a New England town green," a "maritime showplace," and "one of the world's most impressive waterfronts" exuding "charm, dignity." One enthusiast suggested strollers in the "Great Plaza" could "watch the sun go down without peering between towering man-made peaks." (Actually it sets behind Society Hill Towers.)

The game plan now is to sell the Landing in two steps. Phase One would see the construction of 450 to 600 luxury condominium units at the southern end of the site, near the soon-to-be-built Chart House Restaurant. Also in Phase One are a \$15 million, city-built viaduct connecting Chestnut and Market Streets to the Great Plaza, three acres of wide steps that will descend from the proposed hotel and office building to the river. They say the viaduct and Great Plaza will be completed next summer (that's 1983, Jack) when bids will be put out for Phase Two, the commercial development north of Chestnut Street.

Hype aside, the immediate prospects for Penn's Landing are not rosy. There is a glut of office and condominium space in Philadelphia today. Access to I-95 has to be solved to the satisfaction of the neighboring communities. And developers are notoriously distrustful of promises made by lame duck administrations.

For Society Hill, the proposed Chestnut-Market Street viaduct may ease the Pine-Spruce Street traffic, but residents might be more sanguine about the project if the Pine Street label on the Cope-Linder model of the "crown jewel" were placed in the right location.

How to Give Clothing, Food to the Needy

Clean, warm, used clothes and non-perishable canned and packaged food are needed by agencies in the Philadelphia area which help needy people. If you deliver any of the above items to Christ Church neighborhood house, 20 North American Street between 9 a.m. and 4 p.m. weekdays, they will be turned over by the Outreach Committee to the proper agencies for distribution to the needy.

Society Hill
Cheese Shop

424 S. 2ND ST.
NEW MARKET,
PHILA.

☆☆☆☆☆
A FIVE-STAR STORE

FRESHLY BAKED GOODS: CROISSANTS, BREADS, PASTRY - FEATURED ARE OUR SECRET RECIPE CHOCOLATE-CHIP CHEESECAKE BROWNIES!!!

IMPORTED COFFEE BEANS - ALSO, MELITA COFFEE MAKERS & FILTERS! AROMATIC & FLAVORFUL TEAS! IMPORTED CHEESES: SWISS, BRIE, CHEVRE, STILTON!!!

PARTY TRAYS, GIFT BASKETS, BUSINESS & PLEASUREFUL CATERING! GOURMET FOODS! SPECIALTY DELI CASE W/MEATS, HOME MADE SALADS! LUNCH IN OR OUT FOR 1 OR 100!! ONLY TASTE WILL TELL!!

FRUITFULLY DELICIOUS

FILLED CROISSANTS; COLUMBIAN, PERUVIAN, COSTA RICAN - AND MANY MORE COFFEES; CHICKEN, TUNA, ORIENTAL SALADS, AND OTHERS!!...

WIDE LINE OF EXOTIC SPICES! WEST PHALIAN HAM, CERVALET, PROSCUITTO AND MORE! ORIENTAL LINE OF FOODS! NATURAL SODAS! CHEESE BREAD.....

FOR ALL OF YOUR HOLIDAY NEEDS -

CALL US AT 627-3377

REMEMBER WE'RE MUCH MORE THAN JUST A CHEESE SHOP!!! BROWSE ON IN!!!

928-1196

Robin
hair design

126 LOMBARD STREET
PHILADELPHIA 19147

Town Watch Is Watching

Thanks to the volunteer efforts of Al Meinster, Town Watch signs have been installed on the perimeter of Society Hill as a visible deterrent to crime.

A Town Watch party was held on January 16th at the Party Pavilion at NewMarket, attended by contributors and residents interested in the organization and its crime-prevention efforts. SHTW President Loren LaViolette thanked the contributors and reaffirmed that "the goal of Town Watch is to actualize a network of Townwatchers who are aware and active in the crime prevention effort." Speakers included representatives of the City and the Police Department, as well as Councilman James Tayoun, who praised the work of Town Watch and said it was a valuable tool in reducing crime in the neighborhood.

David Brown of the Scheduling and Recruitment Committee encouraged members to take on responsibility at patrol captain and quadrant leader level. If a patroller needs to change an assignment time or date, he is asked to call his patrol captain in advance so a replacement can be found and an alternative patrolling date scheduled. Special acknowledgment was given to those patrollers who continue to walk during the winter months and to the businesses that offer them hot drinks during their tours through the neighbor-

hood—Tia's, The Tavern on the Square, and Once Upon a Porch.

Officer Wiley Redding presented the gathering a skit on crime-prevention and described the proper procedure for reporting a crime and identifying a suspect. Town Watch gives special thanks to the NewMarket Business Association for donating refreshments to add to the evening's festivities.

* * *

Town Watch Tip—Residents are advised to be on the look-out for muggers who approach them under the guise of asking directions and then distract their attention by saying that there is something on their coat. There have been three such incidents recently.

* * *

Do Not Forget—The Community Hot-Line is your direct contact with Town Watch. Please call us if you see or hear of a crime you wish to report, so that SHTW can keep statistics of crimes in the area. *Crime prevention is your responsibility. Take a voluntary step. Call 629-1323.*

* * *

Independence Place

Retail Space Violations Go Unchecked

Neighborhood representatives Bob Holtz, Nancy Frenze and SHCA president Steve Miller met with Joel Weisbein, president of Independence Place Associates and Morris J. Dean, Esq., attorney for the developer on December 9th, to discuss the many violations of the restrictions on retail space in the South Tower as defined in the Declaration of Easements, Covenants and Restrictions that run with the Independence Place property at 6th and Locust Sts.

The restrictions in violation are: **1)** regular use of the emergency exit doors for other than emergency purposes, **2)** the non-conforming orange window space on the south side of Club Nautilus, **3)** eat-in facilities at Bagel Works, **4)** the signs at the 5th and 6th Street entrances to Washington Square Garage, **5)** illegal parking by trucks delivering to the retailers, **6)** the continuing deterioration of the brick common wall between the Washington Square Garage and Manning Walk, **7)** the use of the alley on the south side of the South Tower for the storage of garbage and rubbish. Following this meeting, Anthony Sorrentino, vice-president of Greenwood Group's

Travel Anytime

24 Hours A Day

7 Days A Week

365 Days A Year

**Multi-Access
Reservation Service**

**Call
925-2123**



**TRAVEL
ANYWHERE**

SOCIETY HILL TOWERS MALL
PHILADELPHIA, PA. 19106

WE'RE NEVER CLOSED

**Independence
Pharmacy, inc.**

PRESCRIPTIONS PLUS +

- + PERSONAL SERVICE
- + FAMILY RECORD SYSTEM FOR YOUR SAFETY & TAXES
- + COMPETITIVE PRICES
- +   PERSONAL CHARGES
- + ALL Rx PLANS HONORED
- + VITAMINS • HEALTH & BEAUTY AIDS
- + OPEN 7 DAYS
- + DELIVERY SERVICE

**6th St. & LOCUST WALK
(BETWEEN WALNUT & SPRUCE)**

YOUR FULL SERVICE PHARMACY

592-1155

MARC S. SCHNEE, R. Ph.

Property Management Division, sent letters to the retailers regarding some of these matters.

At its December meeting, the SHCA Board voted in favor of insisting that the developer strictly and fully observe the restrictive covenants. A letter stating this motion and also suggesting that the most effective means to assure the observance of the restrictions is through a verbatim incorporation of the restrictions in each lease, was sent to Joel Weisbein by President Miller on January 6th. As we go to press, there has been no response from the developer on this firm stand by the SHCA.

Greenwood Sues Its Partner, Cadillac Fairview

It was only December 9th, when the neighborhood representatives were assured by the Weisbein brothers, Joel and Raymond who is in charge of marketing, that all was well between Greenwood Properties, Inc., and Cadillac Fairview despite reports in newspapers and business journals that Cadillac Fairview, a Canadian developer, had defaulted to Citibank, New York, on a record \$84 million mortgage and would no longer be involved in residential real estate in the U.S.

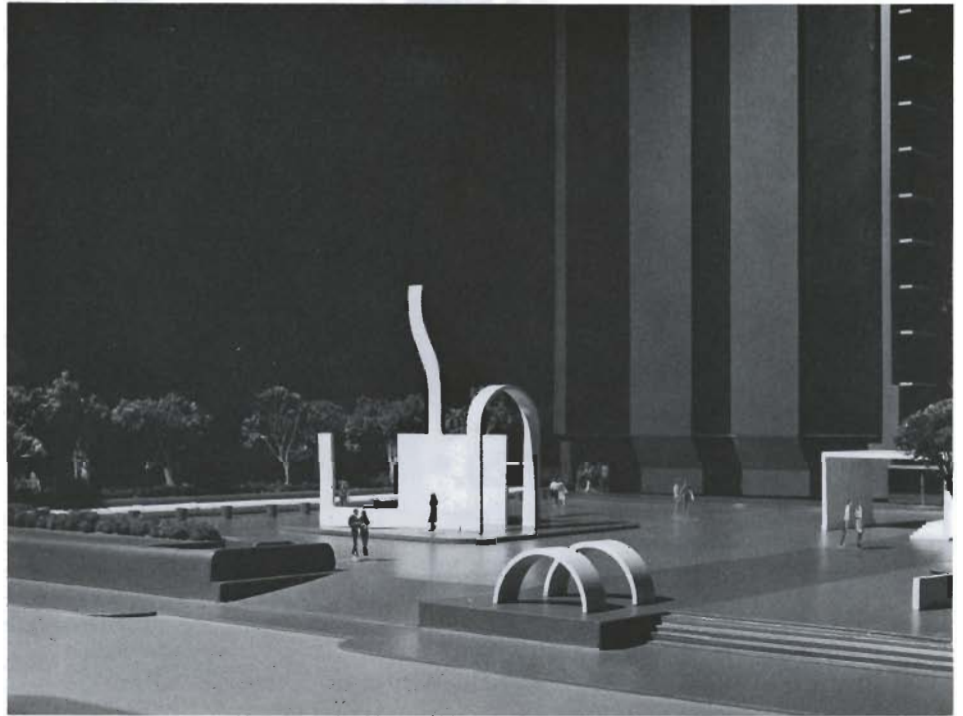
On December 30th, Greenwood Properties, Inc., a partner of Independence Place Associates, filed a complaint in U.S. District Court here against four Cadillac Fairview corporations, alleging that Cadillac Fairview violated the partnership agreement by which they allegedly agreed to loan (in the ratio of 90% Cadillac Fairview Society Hill and 10% Greenwood Properties Inc.) funds for the development of the South and North Towers. Greenwood Properties, Inc., also alleges that Cadillac Fairview reneged on an agreement to be co-developer on an 8th and Walnut Street project (condominiums and parking garage on the parking lot opposite the Walnut St. Theatre) rendering Greenwood unable to furnish the City with proof of ability to finance and thus losing the project.

The complaint filed by Greenwood demands judgment against the Cadillac Fairview corporations in the amount of \$25 million.

SUPPORT OUR SUPPORTERS

Revenue from advertising in this and other issues of *The Resident Newsletter* makes it possible for the Society Hill Civic Association to publish the paper. We urge our readers to patronize our advertisers and to mention to them that you appreciate their support.

WELL, IT'S BETTER THAN A CLOTHESPIN, WE GUESS



Overall plan for the site-specific sculpture environment for the outdoor plaza at Independence Place, Sixth Street and Locust Walk. According to sculptor Barbara Neijna, the plaza is "people-space which ties into the city fabric, creating an integrated public art statement."

(Photo by Lawrence S. Williams, Inc.)

Society Hill Beverage

TO SERVE YOU BETTER . . .

We have added a day ...



and extended our hours . . .

BEGINNING MONDAY OCTOBER 4, 1982

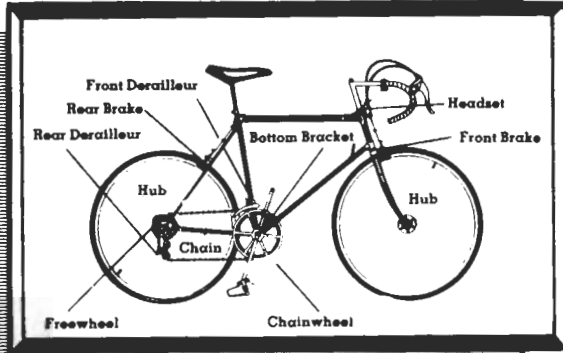
Society Hill Beverage will be open:

MONDAY THRU SATURDAY

9 a.m. - 7 p.m.

333 BAINBRIDGE, PHILA. PA. 19147 • 627-4106

ANATOMY of a BICYCLE



Our SPRING TUNE UP SPECIAL only \$20.*

Our SPRING TUNE UP includes adjustment of brakes, gears, headset and bottom bracket. Plus we'll lubricate your chain and freewheel, true your wheels and tighten nuts and bolts.

And while you're here, check out our full line of **Zebraenko** bikes and products from Avocet, Campagnolo and Eclipse.

So tune up for spring with the *serious* bicycle shop. Wheel over!



SOUTH STREET BICYCLE SHOP

630 South 4th St., Phila., 922-1283

Garfield G. Duncan Building
Suite 505
Pennsylvania Hospital
700 Spruce Street
Philadelphia, PA 19106
627-6400

STEVEN W. SEITCHIK, D.M.D.
GENERAL AND PREVENTIVE DENTISTRY

COMPREHENSIVE FAMILY DENTISTRY
WHICH INCLUDES:

Restorative Dentistry
Cosmetic Bonding
Bleaching of Stained Teeth
Nitrous Oxide
Hours by Appointment

PANIC BUTTON!

HANDY NUMBERS TO POST BY YOUR PHONE

POLICE (Emergency 911)	231-3131
FIRE (Emergency 911)	922-6000
City Hall	MU 6-1776
Poison Information	WA 2-5523
Septa Information	579-7800
Amtrak Information	824-1600
Yellow Cab Company	WA 2-8400
United Cab Company	854-0750
Philadelphia Gas Works	CE 6-7000
Philadelphia Electric Company	561-6161
Electric (Emergency)	841-4141
Water (Emergency)	MU 6-3900
Jefferson Hospital	928-6000
Pennsylvania Hospital	829-3000
Cars Towed	MU 6-2778 or MU 6-7699
Bulk Trash, Dead Animal Removal, Garbage Collection problems or questions	MU 5-5560
Animal Control (strays)	426-6300
Animal Control (Cruelty)	BA 5-4500
Fire Hydrants (out of order)	Ext. 127262 MU 6-1776
Community Home-Health Service	568-7570
Heat (Emergency Service-tenants)	MU 6-2590
Tenant Action	735-8261
Mayor's Office	
Consumer Services	MU 6-7595
Information	MU 6-2250
Information and Complaints	MU 6-3000
Potholes, broken curbs, etc. (Streets Dept.)	MU 6-5508
Rats, Insect Control	MU 6-5152
Sanitation Problems (District 1 Office)	MU 6-5560
Sewers (clogged, etc.)	Ext. 282845 MU 6-3900
Street Lights (broken, burned out or request for add'l)	MU 6-7526
Street Signs (missing or request for add'l)	MU 6-5530
Traffic Lights (broken or request for add'l)	MU 6-5530
Tree Problems (Trimming, spraying, etc.)	Ext. 81229 MU 6-1776
Vacant Lots & Buildings (problems, questions)	686-2463

PAUL HERTEL & CO., INC.

Established 1908

Insurance

AUTO
RETAIL
MARINE
AIRCRAFT
PERPETUAL
HOMEOWNERS
PROFESSIONAL
CONDOMINIUMS
MANUFACTURERS

N.E. Cor. 3rd & Chestnut Sts.
Philadelphia, PA 19106
Telephone: WA 5-7656

A Graveyard with Lights

Seems that anytime there's anything new on Washington Square it is difficult to determine whether something is being done for the Square or to it. Take the new cinderblock storage shed. Please. There it sits built without the blessings or knowledge of the SHCA, let alone the Washington Square Association. It's supposed to house gardening equipment so let us hope that something good will come of it.

It was a little more than a year ago when Independence Place offered to beautify Washington Square, assuming that the neighbors and the SHCA wanted Washington Square to be more like Rittenhouse Square. To their chagrin, they found that the neighborhood was in agreement with the philosophy of the Washington Square Association, a group of businesses situated around the Square who have raised money for its maintenance for the last half century, and who believe that the Square's improvements should be in keeping with the fact that it is actually a historic cemetery. The neighborhood groups did agree that repair of the flagstones, sodding, additional lighting and the replacement of dead trees and shrubs would be appropriate. For any greenery to survive dry spells, the old underground watering system should be restored to working order. So they got stuck with a dumb-looking shed.

A lot of things could be built on the Square, but what should be? Some feel the answer is, "anything that you would normally build on a cemetery; it's the Arlington of the Revolutionary War."

John Adams wrote in 1777 ". . . The sexton told me that upwards of 2000 soldiers had been buried there; and by the appearance of the grass and the trenches, it is most probable that he speaks within bounds."

It was abandoned as a burial ground about 1795; in 1816, grazing cows were shooed and it became a park shortly thereafter. It remained primarily a quiet place of light and shadow and high-arched trees, both before and after the 1870 plebiscite to locate the new city hall there,



Statue of Washington stands in front of a memorial plaque engraved with the words, "Freedom is a light for which many men died in darkness." (Photo by Nancy Frenze)

which Washington Square lost—or won—51,623 to 32,885.

In 1952 history bestirred itself, and, with money raised in and by the Washington Square Association, there was added:

- a peripheral brick wall modelled after those often built around the burial grounds of Colonial churches,
- the memorial to the Unknown Soldiers of the American Revolution with Washington's statue overlooking a sarcophagus in which reside the bones exhumed from the northwest corner of the Square, presumably of a soldier, and
- lights patterned after Franklin's improvements on London lighting of the time.

Since then many arguments were heard as to what should be added or subtracted to what, before 1825 was appropriately called Southeast Square. Most of the arguments have subsided, and many residents and Washington Square Association members would be gratified if Washington Square could be put in the

care of the awesomely meticulous National Park Service.

Whatever its future, let its serene mood contrast with the busy coming and getting of the streets that surround it.

NEEDED: FLAGS, FLOWERS, FRIENDS

Put out the flags, hang the May baskets, and help the Friends of Independence National Historical Park and the Society Hill Civic Association extend gracious, neighborly hospitality to the visitors of Society Hill as part of Philadelphia Open House, the week of April 29th to May 8th.

Society Hill tours will be May 5th and 7th from 1 to 5 p.m. and May 2nd from 5 to 9 p.m.

Anyone interested in acting as a host or hostess for these tours, please call Molly DeLaurentis (923-2444) or Suzie Pattison (925-8813).

For P.O.H. brochure call or write P.O.H. office: 313 Walnut St., Phila., PA 19106. Phone: 928-1188, 928-1553.

Scouting a Spaghetti Orgy

Boy Scout Troop #176 will hold a community spaghetti supper March 11th at the Old Pine Community Center. Tickets (\$3) are available from any neighborhood scout or at the door. The food will be served cafeteria style (all-you-can-eat) starting at 6:30 and continuing until 8 p.m. Proceeds from this annual dinner are used to purchase troop camping equipment and to support other scout activities.

A Tuneful Afternoon

The Carpenters' Company Candlelight Concert on Sunday, March 6th at 4:30 p.m. will highlight members of the Savoy Opera Company. Their repertoire includes selections composed by Gilbert and Sullivan and Broadway show tunes. Tickets are \$12.50. Refreshments will be served after the concert. Make your reservation with Jennifer Lord at Carpenter's Hall 925-0167.

"A Landmark in a Landmark."
Pierce & Schurr
PRIME MEATS IN THE
Reading Terminal
Pamper yourself. Free Home delivery. 925-4445

Traffic Study

(Continued from page 1)

oughfare and, at the same time provide more parking spaces, the SHCA recommends closing Spruce entirely between Front and Delaware Avenue and using the space for resident and tourist parking. This course would make I-95 inaccessible from Front Street, as well. The SHCA response clearly states that the community will only affirm a plan that reduces the present traffic flow on Pine and Spruce Streets and prevents them from continuing to be east-west corridors of through traffic. The SHCA also favors the closing of the east side of Second Street between Pine and Lombard.

Finally, the SHCA defers to Queen Village on Bainbridge Street improvements, but states unqualified opposition to the proposed partial closing of South Street to traffic and sees no benefit from expensive "traffic restraint measures" on Delancey Street or any other street in Society Hill.

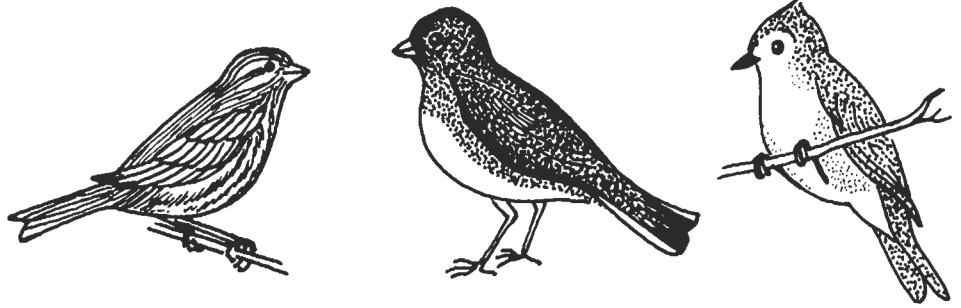
Since the consultants' management report is in its preliminary stages, it is hoped that the final report will address this community's traffic and parking problems more adequately.

Bookbinder's Lot

(Continued from page 1)

difficulty in obtaining City Council approval, and PIDC is expected to apply for a \$5 million Urban Development Action Grant from the U.S. Department of Housing and Urban Development on their behalf. Rouse-Sheraton told the SHCA membership that Sheraton had constructed \$500 million in hotels in the past few years, and that financing for this project (estimated at \$35 million) was virtually in hand.

There is still one more obstacle in the way: Bookbinder's John Taxin has appealed the ruling of the Common Pleas Court favoring commercial, i.e. hotel, use for A-4. A decision had not come down at the time of this writing. Should Mr. Taxin's appeal win, it could at least cause some delay. If the appeal fails, the hotel could open within 18 months or two years after financing has been secured.



SUPPORT YOUR LOCAL BIRDS

Three delightful winter backyard birds which roost in Society Hill are from left to right:

House Finch—Similar to a sparrow, except the male has patches of raspberry-rose color on its head, body and rump, and the female is striped brown. Sings beautifully.

Slate-colored Junco—Dark gray with a white tummy and conspicuous white outer tail feathers, especially when it flies away.

Tufted Titmouse—Crested, blue-gray bird with peach colored sides. Looks rather like a tiny blue jay. Sometimes hangs upside-down briefly, and has a very fast takeoff.

Got Some Time? Volunteer

The Children's Hospital of Philadelphia needs volunteers Monday through Friday, 8:30 to 5:00. Service in both patient and non-patient areas four hours each week can be very rewarding. Please call Miss Vera V. Wheeler, Director of Volunteers, 596-9173 or 9174, 9 to 4 p.m., or stop in at the office for an application, 34th Street and Civic Center Boulevard, Monday through Friday.

* * *

One of the current volunteer projects of the Genealogical Society of Pennsylvania is extracting names from the marriage and death columns published in the Philadelphia Ledger newspaper beginning with 1836. These names will be alphabetized to aid genealogical researchers. Since vital records were not kept in the city of Philadelphia prior to 1860, this type of data is very valuable. Volunteers meet every Wednesday at 10 a.m. Coffee is served. Anyone interested may contact Mrs. Rita Schive Mowrer 545-0391 or just introduce yourself at 10 a.m. on any Wednesday

morning in the third floor office of The Genealogical Society of Pennsylvania, 1300 Locust Street, Philadelphia.

Get out the blindfold . . .

"Philadelphia Cornucopia" Moves to the Neighborhood

All neighbors are welcome to come and celebrate the installation of Red Grooms' "Philadelphia Cornucopia" at the Visitor Center, 3rd and Chestnut Streets, on March 24. This spectacular environmental sculpture which depicts the abundance of Philadelphia's cultural heritage and features the Founding Fathers on board the Ship of State, can be enjoyed for the first time in this location at a cocktail party, the proceeds of which will go toward the purchase and installation costs. For an invitation, call or write the Friends of INHP, 313 Walnut, Philadelphia, PA 19106, 597-7919.

All The Shrimp You Can Eat

\$5.95 and this coupon entitles you to our Special Weekend Seafood Salad-bar and a glass of chablis. It's an \$8.45

value so you **save \$2.50.**



Saladalley

Available 5:30-10:30 pm Fri., ~~5:30-10:00~~ pm Sat., 5:30-9:00 pm Sun. at 1720 Sansom St. Available 5:30-9:00 pm Fri., Sat. at The Bourse. Available 5:30-10:30 Fri., Sat., 5:30-9:00 Sun. at Ardmore. Available 5:30-8:30 Fri., Sat., at Willow Grove. This coupon applies to all Saladalleys except 4040 Locust St. Soda or coffee offered in lieu of wine at Ardmore and Willow Grove. Valid through April 30, 1983.

1720 Sansom St.
(564-0767)

Suburban Square, Ardmore
(642-0602)

The Bourse, at Independence Mall
(627-2406)

Willow Grove Park
(659-1565)

4040 Locust St.
(349-7644)

Reviewing Neighborhood Schools

Society Hill parents of school-age children heard presentations from representatives of seven Philadelphia schools at SHCA's School Forum organized by Ron Abrams, assisted by Karen Kress Weisbord. For those who missed the Forum, here is a summary of the presentations, highlighting the programs of each participating institution:

Meredith School (public), 5th and Fitzwater Streets. Kindergarten through 8th grade. Principal Bronca advised that Meredith has a teacher-student ratio of 1 to 33, a magnet performing arts program, and a mentally gifted program as well as a complete curriculum. Application for a grant from the Rockefeller Foundation for the Arts has been made. Meredith will accept children as young as 4 years, 7 months by September 1st.

St. Peter's School (private), 4th and Lombard Streets. Nursery (3 years) through 8th grade. Headmistress Caroline Seamans said enrollment will be kept to approximately 215 students although facilities have been expanded and those of Old Pine Community Center are utilized. Historically significant, the school draws pupils from all over Philadelphia and the suburbs. It is nonsectarian but includes religious aspects—morning prayer and grace before

meals. It has a structured curriculum with emphasis on humanities, offers computer training and a good sports program.

Philadelphia School (private), 25th and Lombard Streets. Kindergarten through 8th grade. Headmaster Martin Brown said this 10-year-old institution has a teacher-student ratio of 15 to 1; present enrollment is 125 which may be increased to 165. The school, which has no religious affiliation, is structured around an open classroom. It has a music department, physical education and all students spend one day a week at the school's farm in Ambler. Tuition ranges from \$2,300 for kindergarten to \$3,300 for 8th grade.

McCall School (public), 6th and Delancey Streets. Kindergarten through 8th grade. Principal Rovner spoke of McCall's special program for children to whom English is a foreign language. The school has programs for the mentally gifted, offers computer training and music, including an orchestra.

Greenfield School (public), 23rd and Chestnuts Streets. Kindergarten through 8th grade. Principal Schectman discussed Greenfield's use of city facilities (art museums, etc.) to educate its 900 students. It has both open and contained classrooms, a program for students to whom English is

a foreign language, and a mentally gifted program. EH-36 applications for students living outside Greenfield's geographic boundaries may be obtained at the school.

Friend's Select (private), 17th and Park way. Kindergarten through 12th grade. Admissions Director Harkins and Lower School Principal Greenberger pointed out the advantages of having a child remain at one school throughout his/her formative years. Nonsectarian, Friend's Select adheres to Quaker principles of responsibility for community, holds a silent meeting once a week. It combines traditional and open schooling.

Durham School (public), 16th and Lombard Streets. Infants (one month minimum) through 5th grade. Principal Shirley Willingham explained that Durham is a child development center, caring for infants from one to 18 months, toddlers 17 to 36 months, and with a full-day kindergarten. Its small size and special curriculum, including a mentally gifted program, give it the advantages of a private school.

All of the speakers stressed that parents should call and pay a visit to the schools in order that they might select the program that is best suited to their child.



WITH 3 CENTER CITY OFFICES
IS PROUD OF ITS SUCCESS IN

SELLING AND RENTING
*FINE SOCIETY HILL AND
CENTER CITY HOMES*

EACH OF ITS 40 SALES ASSOCIATES OFFERS
YOU THE PERSONAL ATTENTION SO NECESSARY FOR YOUR
REAL ESTATE REQUIREMENTS—CALL TODAY



CENTER CITY OFFICE
1215 WALNUT ST.
PHILADELPHIA, PA 19107
215 922-4200

SOCIETY HILL -
QUEEN VILLAGE OFFICE
226 SOUTH ST.
PHILADELPHIA, PA 19147
215 925-2595

RITTEN HOUSE SQ.
OFFICE
2025 WALNUT ST.
215 569-2025



JOIN US

Tear off and mail to

Society Hill Civic Association
 P.O. Box 3
 Philadelphia, PA 19105
 attention: Milton S. Schneider, Treasurer

Please renew my (our) membership in the Association.

Name _____

Address _____

_____ Phone _____

Check one:

_____ 1 person \$6: _____ 2 persons same address \$10

_____ I request a waiver of dues.

Add \$1 per member for your numbered SHCA parking sticker, include a self-addressed stamped envelope; \$5 more for each additional sticker.

The NewMarket Sidewalk Caper

The War of the Signs

Instructions in December's *Resident Newsletter* to neighbors sighting and wishing to fight objectionable advertising signs couldn't have been better timed. As the issue was being delivered, NewMarket was getting ready for Christmas by installing two large sidewalk shop directories on both sides of Second Street. The one on the west side, in front of the Country Market, takes up half the width of the walk and nearly obscures the Stamper Street sign.

Following the *Newsletter's* instructions, this reporter phoned 686-5500. A lady identifying herself as "Highways" answered and sympathetically recorded my complaint. Next, the NewMarket management told me that "nobody else has complained." They suggested a lot more neighbors had to weigh in, and that they expected an official complaint from the President of SHCA.

The efforts of all of us were not enough; two months later the signs still remain, solidly embedded in concrete. The delay, according to NewMarket's General Manager Joseph A. Iacovino, is because he's waiting for Licenses and Inspections to tell him where the signs can legally be placed. Iacovino doesn't want to move them more than once. He named his man at L&I as Inspector Robert Boothroyd.

Daily calls for a whole week have failed to put me in touch with Inspector Boothroyd. Yes, there is an Inspector Boothroyd, but he's never in and he doesn't return calls. The office of District Engineer Pincowsky, Boothroyd's superior, yielded the information that Highways knows about the Second Street sign violations, but that their inspectors have been too busy to take action so far.

Nothing in the instructions said that getting rid of objectionable signs would be easy, after all.

stephen d. cohen, d.d.s.
steven a. graubard, d.d.s.

*lafayette building
 437 chestnut street
 philadelphia, pa. 19106
 215/925-6251*

*drs. cohen and graubard
 dentistry for children. p.c.*

PARTY OF THE YEAR

Despite the dismal weather and snow, we had a very exciting turnout for our Society Hill Civic Association party on February 6th. Among the guests were: Congressman Tom Foglietta, Candidate for Mayor Frank Rizzo, Councilman Jim Tayoun, and State Representative Sam Rappaport. Diane Shecter wants to thank Joan Simon of Domsy and Simon Advertising Agency, Inc., the Society Hill Cheese Shop, Tia's Restaurant, the Poster Shop and Beth Siniawsky for their assistance.

Staff for this issue—Ruth Dugan, Nancy Frenze, Alan Halpern, Ellen Miller and Peggy Robb.

Contributors to this issue—Ron Abrams, Libby Brown, Molly DeLaurentis, Hilary LaViolette, Bart Lippincott, Diane Schecter and Bertha Von Moschisker.

Business Staff—Cathy Lipkin, Laurette Scherneck and Keith Straw.

Deadline for articles and ads for the next issue is April 1, 1983. Articles may be delivered to staff members or mailed to *The Resident Newsletter*, Box #3, Philadelphia, PA 19105. For advertising rates and information, please address Laurette Scherneck at *The Resident Newsletter*, Box #3, Philadelphia, PA 19105.

DARTS & LAURELS

Dart—To the real estate brokers/home owners who think "For Sale" signs have to be as large as billboards and to the real estate brokers/home owners who leave the "For Sale" sign up well after the sale papers have been signed. Take an ad in *The Resident Newsletter* instead.

Dart—To City Council who made the dog-litter law but has made no provision for enforcement. Suggestion: How about giving meter maids ticketing authority for dog-litter owners?

Laurel—To SUPER FRESH for being there with helpful staff and well-stocked shelves.

Dart—To Redevelopment Authority for operating a luxury pigeon condo at the southwest corner of Locust and Seventh Streets.

Laurel—To Old Pine Presbyterian Church for continuing to sponsor the Boy Scout Troop #176. (Please see announcement in this issue.)

Dart—To the paint manufacturer for having struck the City again. The black paint applied to obliterate the white street lines has not proven as weather resistant as the white paint which is now showing through.

Laurel—To the residents who put the unsolicited flyers and papers through their out-of-town neighbors' mailslots. Doing so makes the house look occupied and keeps burglars away.

Dart—To the people who let their dogs run free around the neighborhood, not realizing how likely unsupervised animals are to terrorize leash-bound pets.

Laurel—To Lautrec/Cafe Borgia for fresh and elegant flowers in their windows all the time.

Dart—To Cafe Borgia for charging six bucks for a belt of brandy. Maybe they should switch to artificial flowers or else get a mask.

Dart—To the Fairmount Park Commission for the hideous out-building they put behind the quaint little maintenance house in Washington Square Park. Obviously more storage space was needed—but there must be better ways . . .

Laurel—(February 10) To God, for giving us such a mild winter.

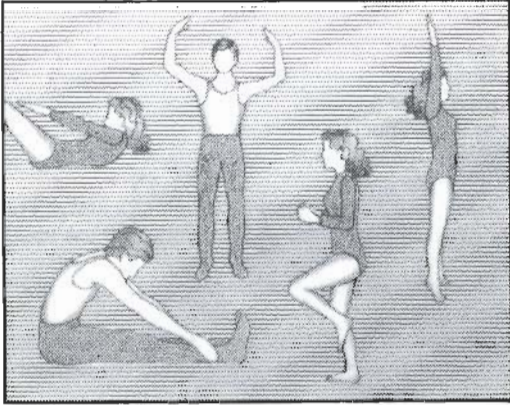
Dart—(February 11) . . .



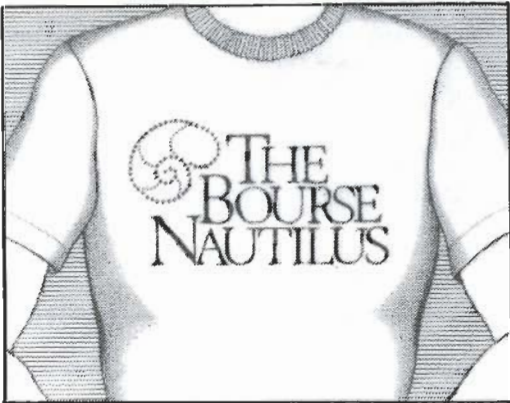
PIER 30 SPECIAL

TENNIS	MONDAY TO FRIDAY 7 A.M. - 3 P.M.	\$10
	MONDAY & TUESDAY 10:30 P.M. - MIDNIGHT	For a Tennis Court for 1 Hour
Present This Coupon at the Club		
RACQUETBALL	MONDAY TO FRIDAY 7 A.M. - 4 P.M.	\$6
	10 P.M. -- MIDNIGHT	For a Court For 1 Hour
	SATURDAY & SUNDAY ALL DAY	
Present This Coupon at the Club		

DELAWARE AVE. & BAINBRIDGE ST.
2 BLOCKS SOUTH OF PENNS LANDING
FREE — AMPLE PARKING OUTSIDE OUR FRONT DOOR
PHONE — 985-1234



WE'RE BUILDING OUR REPUTATION ONE BODY AT A TIME



WE WILL INCREASE YOUR STRENGTH.
WE WILL IMPROVE YOUR FLEXIBILITY.
WE WILL DECREASE YOUR BODY FAT PERCENTAGES.
WE WILL CONDITION YOUR HEART AND LUNGS.

WE WILL GUARANTEE IT!



- Purchase a One Year Membership and get the second year FREE
- The Bourse Nautilus will honor the remaining time on any other Health Club Membership*
*with purchase of a one year plan
- The Bourse Nautilus is independently owned and not to be confused with Club Nautilus

TOPPERS

THE
BOURSE
NAUTILUS

Independence Mall East
Twenty-One South Fifth Street
Philadelphia, Pennsylvania 19106 215/627/3545