



SOCIETY HILL CIVIC ASSOCIATION

THE RESIDENT NEWSLETTER

Box 3, Philadelphia, Pennsylvania 19105

December, 1984

MARK YOUR CALENDARS

The next general membership meeting is scheduled for Wednesday, December 12th at 8 p.m., Old Pine Community Center, 4th and Lombard. There will be more discussion about

access routes to and from Center City and I-95. Also, a proposal for a chapel at the corner of Spruce and Mattis Streets and a new program at Hall-Mercer will be presented.

Late January Wake Set For McCrea Houses

If houses were ever deserving of preservation, the McCrea twins were certainly worthwhile candidates. They were unusually elegant and complete examples of late Georgian middle-class dwellings with a long and fascinating history. Stubbornness, insensitivity and a Byzantine tangle of political dealings did them in at last, on September 27, but happily their loss was by no means total. They were thoroughly documented with photographs and architectural drawings which will become part of the Historic American Buildings Survey (founded by our own Charles E. Peterson in 1933) and placed in the Library of Congress. Some of the most important architectural details were rescued at the last minute, and are now in the Independence Park Study Collection, located in the 1795 vaults under the First Bank of the United States. And finally, the fight to save the houses, and the principles upon which the legal action were based, have aroused public awareness of the need for a stronger preservation ordinance in Philadelphia.

Now your help is needed to pay our considerable remaining legal bills. The McCrea lawyers did a wonderful job and
(continued on page 10)

PARTY! PARTY!

Watch your mail for news of the SPCA Annual Membership Party which will be coordinated with the opening of the Market at NewMarket in mid-January. A resident mailing will fill you in on the details.

A Chapel Is Proposed For Tun Tavern Site

A proposal to use the weedy corner at Spruce and Mattis Streets as a site of a new Chapel of the Four Chaplains will be discussed at the December 12th SHCA membership meeting. Some years ago, with SHCA approval, the corner was carved out of the I-95 cover park as the location for a replica of Tun Tavern, birthplace of the U.S. Marine Corps. The Marine Corps Memorial Foundation ran out of money before Tun Tavern reached ground level and the project was abandoned, leaving the corner to become a city-owned orphan. The Fairmount Park Commission, which maintains the surrounding park, apparently has never been assigned this corner, and it is too insignificant to warrant a regular city cleanup.

The Chapel of the Four Chaplains, now located at 1855 North Broad Street, is an interdenominational church dedicated in 1951 as a memorial to four young army chaplains who passed out life preservers, including their own, to troops aboard the torpedoed *Dorchester*. Arms linked, the four chaplains went down with the ship on February 3, 1943 off Greenland.



Street Lights—

The Switch to Sodium

Our "Franklin Lights" are due to be updated soon to the energy-conscious 1980s when they are changed from incandescent to high pressure sodium lamps. Charles A. Oerkvitz, Street Lighting Engineer of the Department of Streets, has advised that 99% of Philadelphia's street lamps have already been converted to sodium. A prototype unit has been in service in Society Hill for the past six months in front of the Man Full of Trouble Tavern on Spruce near Second Street.

The new lamps are expected to save 69% of the present energy consumption, give

21% more light, and last eight times longer than the incandescent bulbs. When the conversion is completed throughout the city, the Department estimates an annual cost saving of \$1,300,000, or a little less than a dollar for you and me and every other Philadelphian.

The Street Lighting Division promises that as part of the conversion work, they will rehabilitate the existing luminaires and standards, replace broken or missing panels, straighten poles and brackets where required, and replace any missing poles. Pole painting will be in next year's budget.

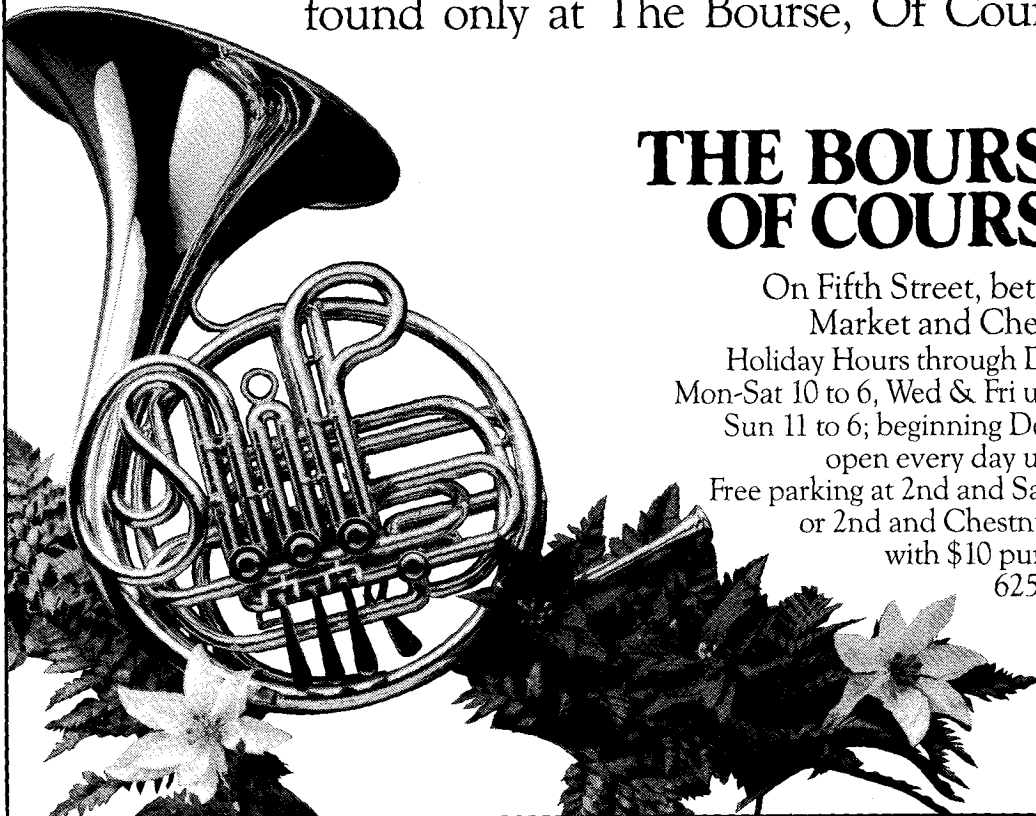
The finest gifts in town all come from one place.

Over fifty fine specialty shops brimming with gifts in every price range. Classic designs and current fashions for men and women. Exquisite jewelry. Wines and spirits. Handmade sweaters. Sophisticated sweets. Men's and women's boots. Best selling books. And so much more.

Each beautifully gift wrapped free! Just part of the personal service you'll find at The Bourse.

When your shopping is done, relax, have a bite to eat and enjoy our gift to Philadelphia: the live Renaissance concerts by The Bourse Antiphonal Brass.

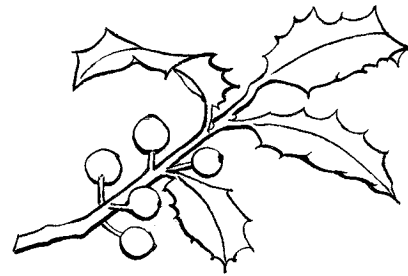
This season treat those you love to a coveted gift or gift certificate. And the majestic sound found only at The Bourse, Of Course!



THE BOURSE, OF COURSE.

On Fifth Street, between
Market and Chestnut
Holiday Hours through Dec. 9:
Mon-Sat 10 to 6, Wed & Fri until 8,
Sun 11 to 6; beginning Dec. 10:
open every day until 8.
Free parking at 2nd and Sansom
or 2nd and Chestnut Sts.
with \$10 purchase
625-9393

A Holiday Agenda



November 18-January 31

National Museum of Jewish History. 55 N. 5th Street. Hanukkah Lamp Showcase. Exhibition and sale. Antique reproduction and modern creative expressions. Selection of draydles also displayed.

November 23-December 30

Bourse Building. Antiphonal Brass concert series. Cathedral music of Bach, Handel and Gabrieli. (Call the Bourse for details.) Exhibition of antique and rare brass instruments on loan from the Streitweiser Foundation.

December 2

11 a.m.- *Society Hill Synagogue*. Holiday sale of Children's
4 p.m. clothing.

December 5, 6 and 7

7 p.m. *Old St. Mary's Church*. Devotions in honor of St. Mary.

December 9

noon *St. Andrew's Russian Orthodox Church*. Christmas bazaar with Russian food and gift items for sale.
4:30 p.m. *Society Hill Synagogue*. Dinner and bazaar with Hanukkah gifts for sale. Entertainment. Reservations.

December 11-January

Hill-Physick-Keith House. Decorated for Christmas. 10-4 Tues. thru Sat., 1-4 Sunday, closed Mon.

December 12

6:30 p.m. *Bourse Building*. Singing City performing Handel's Messiah.

December 13

8 p.m. *St. Peter's Church*. Upper School Christmas Play

December 14

11 a.m. *St. Peter's School*. Nurseries and Kindergarten. "Around the Tree."

December 16

11 a.m. *St. Peter's School*. Nurseries and Kindergarten. "Around the Tree."

St. Andrews Russian Orthodox Church. Classical composers Liturgy. Including music of Rachmaninoff, Tchaikovsky and others.

4 p.m. *Old St. Mary's Church*. Advent service with lessons and carols.

December 19

10:30 a.m. *St. Peter's School Theater*. Celebration of carols and poetry.

December 20

11-7 p.m. *Old First Reformed Church*. Holiday festival. Gift tables. Hot roast beef and turkey sandwiches, cranberry sauce, homemade baked goods.

December 22

6:15 p.m. *Mikveh Israel*. Hanukkah candle lighting service followed by entertainment and supper. Reservations necessary for supper. Donation requested. 922-5446.

December 23

10 a.m. *Old First Reformed Church*. White Gift Service with Children's pageant.

December 24

5 p.m. *Christ Church*. Family Service.

5-7:30 p.m. *Holy Trinity Church*. Vigil Christmas Mass.

6:30-7 p.m. *Old First Reformed Church*. Live creche. People take the place of mannequins; and

7:30 p.m. Candlelight carol service.

8 p.m. *Old St. Joseph's Church*. Christmas Eve Mass.

10:30 p.m. *St. Peter's Church*. Music by men and boys' choir.

10:30 a.m. *Christ Church*. Festival music for choir, organ, brass and timpani. John Binsfield, organist-choirmaster. (Open to the public.) Cantata No. 63. J. S. Bach. Christ Church Choir. Rittenhouse Brass Quintet.

11 p.m. *St. Peter's Church*. Holy Communion.

11 p.m. *Christ Church*. Holy Communion.

December 25

7:30 a.m., 10,

11, 12:15 p.m. *Old St. Joseph's Church*. Christmas Day Masses.

9 a.m. *Old St. Mary's Church*. Christmas Day Mass.

10 a.m. *St. Peter's Church*. Holy Communion.

10 a.m. *Christ Church*. Christmas Service. Hymn and Communion.

11 a.m. *Old First Reformed Church*. Christmas Service.

Noon *Holy Trinity Church*. Christmas Day Mass.

December 31

7:30 a.m., 10,

11, 12:15 p.m. *Old St. Joseph's Church*. New Year's Day Masses.

11 a.m. *Old First Reformed Church*. New Year's Day Service.

5 p.m. *Old St. Mary's Church*. New Year's Day vigil Mass.

10 p.m. *Old First Reformed Church*. Sing-in with the Mendelssohn Club with orchestra and soloists. Kick-off Bach Tricentenary Celebration in Philadelphia with reception. \$10. couple. \$7. single.

12 midnight *New Year's Eve Party*. Held at the First Bank of U.S. on Third Street celebrating Franklin's return from France. Open bar and hot hors d'oeuvres. Champagne at midnight. Dinner by Robert Fair. Howard Lanin's Orchestra. Entertainment. Open to the public. \$75. per person.

January 1

9, 10:30 a.m. *Old St. Mary's Church*. New Year's Day Masses.

Noon *Holy Trinity Church*. New Year's Day Mass.

January 6

6 p.m. *St. Andrews*. Lenten Community Supper with special Christmas dishes. Reservations. Vespers immediately after.

January 7

10 a.m. *St. Andrews Russian Orthodox Church*. Christmas Service.

Ruth Dugan
WA2 3195 -

LETTERS . . .

~~Est. Penn~~
238 S. 3rd est
don
united from above

To Whom It May Concern:

I am writing on behalf of the residents in the Towers and some friends living in houses going up to 4th and Delancey Streets.

The noise level of the concerts during the summer was excessive. At least three concerts took place a week. Both during the day and up to 10:30 in the evening. These concerts take place on Penn's Landing and the audience sits on top of the performers so there is little reason for us to be burdened with this.

We would appreciate any cooperation you could give us in the Newsletter or otherwise.

Thank you,

Pat Cohen

Almost Everything You Ever Wanted To Know About Advertising

Our hard working SHCA business staff needs the help of another team of two who could alternate or substitute in case of an emergency. This type of backup is essential to the continuity of the *Newsletter*. Both Laurette Scherneck and Keith Straw are professionals and willing to apprentice volunteers who would like to learn the business and contribute to our community by working on this publication. For more information, call Laurette Scherneck at 923-4249.

Staff for this issue—Charlie Bangert, Ruth Dugan, Nancy Frenze, Karen Nicholson, Renee Saul, Arthur Smith.

Contributors to this issue—Lee Griswold, Ellen Miller.

Business Staff—Laurette Scherneck and Keith Straw.

Deadline for articles and ads for the next issue is February 1st.

Articles may be delivered to staff members or mailed to *The Resident Newsletter*, Box #3, Philadelphia, PA 19105. For advertising rates and information, please address Laurette Scherneck at *The Resident Newsletter*, Box #3, Philadelphia, PA 19105.



Club Nautilus at Sixth and Locust
—(photo by Nancy Frenze)
—One of many Nautilus clubs to close in recent weeks.

stephen d. cohen, d.d.s.
steven a. graubard, d.d.s.
joel e. elfman, d.d.s.

lafayette building
437 chestnut street
philadelphia, pa 19106
215/925/6251

7847 old york road
elkins park, pa 19117
215-782-8420

dentistry for children
and orthodontics

**KAMIKAZE
KIDS**

IS HERE !!

Unique Children's Clothing

**520 S. 4th St.
Philadelphia
574-9800**

**Society Hill
Beverage**

**Full Line of Foreign
& Domestic Beers**

Soda * Cigarettes * Snacks

We Deliver
333 Bainbridge St.
627-4106

Monday through Saturday
9:00—7:00

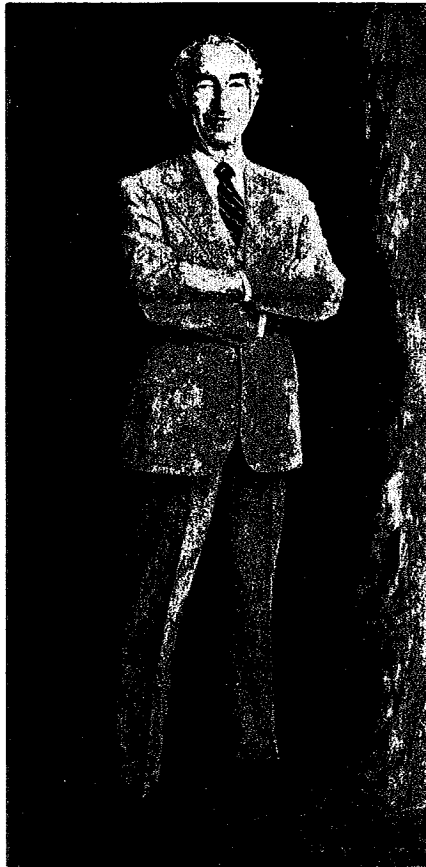
Dr. Israel Is Honored By Jefferson Medical

One of Society Hill's illustrious residents was given an exceptional honor at Thomas Jefferson University in September.

Harold L. Israel, emeritus professor of medicine at the Jefferson Medical College, where he continues to teach, engage in research and care for patients after 25 years; saw his portrait, commissioned by the department of medicine, presented to and accepted by the faculty of the College and the University's Board of Trustees. The portrait was painted by the well-known artist, William A. Smith, and represents the esteem in which Dr. Israel is held in the medical world.

Before an audience of more than 300 colleagues, patients, family and friends, the portrait was unveiled to great acclaim. Two of Dr. Israel's fellow-physicians gave biographical sketches which included some personal and amusing items, but primarily noted his long and distinguished career with special emphasis on his pioneer work in the disease of sarcoidosis, for which he is known all over the world.

The portrait presentation was followed by a champagne reception in Jefferson's famous Eakins' Lounge and the evening ended in a gala dinner at the Hill-Physick-Keith House.

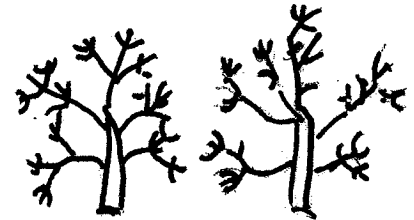


DR. HAROLD ISRAEL, M.D.

Tree Replacement Program on Hold

SHCA's tree planting program, announced in the September issue of *The Resident Newsletter*, drew a disappointingly small response from our readers. If we are to expect a quantity discount from an approved contractor for street tree replacements, we will need to sign up many more customers. As we reported, there is no chance that the city will replace our dead street trees, so it is up to property owners to do so.

SHCA plans to keep the program alive and hopes that enough orders will be received by January 10th so that we will be able to have a big spring planting. If you'd like your tree replaced, send your name and address to SHCA Planting Program, Box 3, Philadelphia, Pa. 19105. If you have some free time and would like to work on this program, please indicate that in your response.



CITY TAVERN

*Eighteenth Century Dining
in the Grand Tradition.*



- Harpsichord
- Candlelight

Midday and Evening Fare

Private dining rooms available

Reservations
923-6059

SECOND STREET AT WALNUT
PHILADELPHIA, PA

DENISE GEORGE - FRANCES MARTINO
JOAN CALLOS - ROBIN McALLISTER

126 LOMBARD STREET 928-1196
PHILADELPHIA

An Anniversary for St. Peter's School

A festival procession and service celebrating the founding of St. Peter's School was held on November 11th at St. Peter's Church. When Bishop William White established it in 1834 as a "charity school" for girls and small boys, tuition was 12½ cents a week. Today, 150 years later, the school is a flourishing establishment attracting children from all parts of the region and from varying backgrounds attending classes ranging from Nursery for 3-year-olds to 8th grade.

For more than a third of its history from 1903 to 1959, St. Peter's was famous as a choir school for boys. It became co-educational again in 1963, and independent of (but retaining close ties with) St. Peter's Church in 1969.

Garfield G. Duncan Building
Suite 505
Pennsylvania Hospital
700 Spruce Street
Philadelphia, PA 19106
627 - 6400

STEVEN W. SEITCHIK, D.M.D.
GENERAL AND PREVENTIVE DENTISTRY

THE LATEST IN
COSMETIC BONDING
AND
TOOTH-COLORED RESTORATIONS

*"A Smile is Your Best
Means of Communication"*



**Society Hill
Dental
Associates**

**RICHARD L. REICHERTER,
D.M.D.**

**LESLIE C. PEARLMAN,
D.M.D.**

Lafayette Building
437 Chestnut Street
Philadelphia, PA 19106
(215) 238-0800

Jackson-Cross
JACKSON-CROSS COMPANY • REALTORS®

LIZ CAMPION
Broker Associate
Residential Division

SOCIETY HILL TOWERS
CONDOMINIUM MARKETING SPECIALIST
2000 MARKET STREET • PHILADELPHIA, PA 19103 • (215) 561-1500

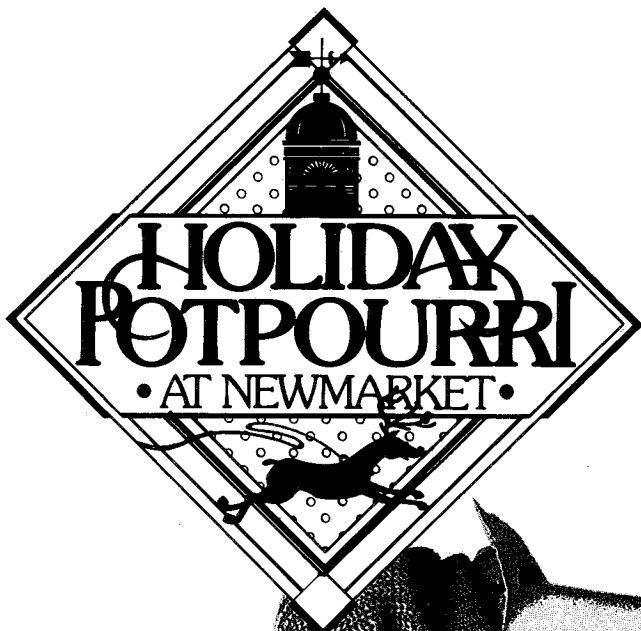
PAUL HERTEL & CO., INC.

Established 1908

Insurance

AUTO
RETAIL
MARINE
AIRCRAFT
PERPETUAL
HOMEOWNERS
PROFESSIONAL
CONDOMINIUMS
MANUFACTURERS

N.E. Cor. 3rd & Chestnut Sts.
Philadelphia, PA 19106
Telephone: WA 5-7656



Discover the spirit of
Christmas at NewMarket.
Berry greens and
twinkling lights. Treasured
gifts for him and her.
And always fine dining at
our restaurants filled
with good cheer and
warm spirits.

NEWMARKET

Something old and always something new.

HOURS:

Monday–Saturday,
11 am to 9:30 pm;
Sunday noon to 6 pm.
Between Pine and Lombard
Street on Second—
627-7500.

PARKING:

on Lombard between
2nd and 3rd Sts.

PORTRAIT
SCULPTURE



Sculptor
EUGENE DAUB



EUGENE DAUB

Now accepting commissions for:

- Portrait busts and plaques (individual, children, family groups)
- Memorial plaques
- Public figures

FROM LIFE OR
PHOTOGRAPHS

Prices reasonable!

(215) 925-2659

EUGENE DAUB STUDIO
1310 CALLOWHILL ST.
PHILADELPHIA, PA 19123

A Happy Day Care Center

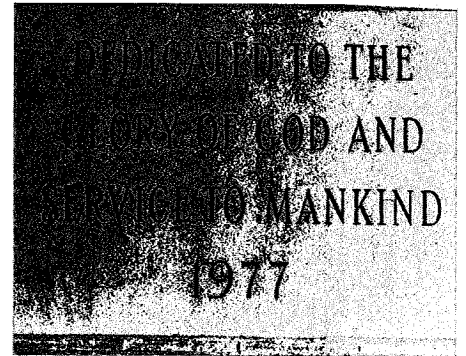
Anyone passing the Salvation Army Day Care Center at 222 South 3rd Street cannot help but notice the smiles on the children playing inside the well-equipped playground. The children enrolled at the Center enjoy a wide variety of activities from the time they arrive at 7:30 am until their day ends at 5:30 pm.

Supervising the care of some 177 children ranging from pre-school to second grade is Captain Florence Townsend who is actively involved in all the daily operations which range from a food program; a sight reading program, and a curriculum planned to meet all areas of a child's development and taught by qualified teachers. School age students are accompanied to and from McCall School by Salvation Army Day Care Center staff. In addition to health administrators, nutritionists, on-site cooks, social workers and aides, there are student teaching placements from area colleges as well as a foster grandparent program.

The Salvation Army, founded in 1865, is an international religious and charitable movement organized and operated on a quasi-military pattern. It is a branch of the Christian church. Its membership includes officers (clergy), soldiers/adherents (laity),

members of varied activity groups and volunteers who serve as advisors, associates and committed participants in its service function. Its Day Care Center has been located on South 3rd Street since 1972. Prior to that time the building, which was erected in 1892, was used as a settlement house serving the needs of the community.

The Center is subsidized by a number of public and private bodies. Student fees vary according to the parents' ability to pay. For more information call 923-0885.



Salvation Army dedication plaque at 222 South Third St. (photo by Nancy Frenze)

BIG HITS. SMALL PRICE.

The Video Company brings you the big box-office hits at very low prices. All of the movies listed here are available for sale in VHS and Beta. But hurry—they're offered for a limited time only at these reduced prices!

\$24.95

- ★ Raiders of the Lost Ark
- ★ Flashdance
- ★ An Officer and a Gentleman
- ★ American Gigolo
- ★ Grease
- ★ Urban Cowboy
- ★ Saturday Night Fever
- ★ Staying Alive
- ★ Eddie Murphy Delirious
- ★ 48 Hours
- ★ Trading Places
- ★ Airplane
- ★ Star Trek The Motion Picture
- ★ Star Trek II—The Wrath of Khan
- ★ Foul Play
- ★ Meatballs
- ★ Popeye
- ★ Charlotte's Web
- ★ Dragonslayer
- ★ Barbarella
- ★ Uncommon Valor
- ★ Up in Smoke
- ★ The Jazz Singer
- ★ Time Bandits
- ★ Escape from Alcatraz

\$39.95

- ★ Star Wars
George Lucas' epic space adventure, with Harrison Ford, Mark Hamill, Carrie Fisher, breathtaking special effects, and John Williams' mighty musical score.

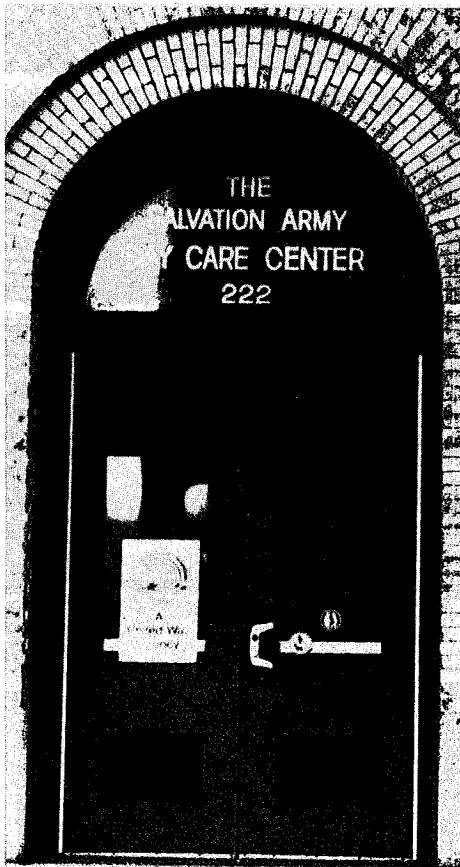
\$79.95

- ★ The Empire Strikes Back
At last—finally available on videocassette. Part II of the "Star Wars" saga, this movie is considered to be the greatest sequel of all time. George Lucas once again gathers together Harrison Ford, Mark Hamill and Carrie Fisher for on-screen heroics, accompanied by John Williams' stirring score.

★ **the VIDEO COMPANY**

Mon.-Sat.: 10AM-10PM Sunday: Noon-7PM

410 South 2nd Street ★ Head House Square ★ Philadelphia ★ (215) 923-3434



The Salvation Army Day Care Center
(photo by Nancy Frenze)

Society Hill is a very special place...

and to us, Society Hill is the only place... consequently... we know Society Hill intimately... we've sold millions of dollars worth of property here.

We can fix the value of your home accurately because of our unparalleled experience.

We can sell your home promptly.

We can guide you through settlement quickly and comfortably.

So... When you are ready to sell, wouldn't it make sense for you to benefit from all this superior experience?... and get a high energy, aggressive sales effort from a sales force that knows and appreciates Society Hill?

Society Hill
Realty Company

206 South Third Street

Call
574 9430

MEMBER OF CCMLB
EXECUTIVE RELOCATION

SUPERMARKET AT THE TOWERS



✓ *Finest Service*

✓ *Top Quality Meats
and Produce*

✓ *Competitive
Prices*

Towers **SUPERMARKET**

"Purveyors of fine commissables for four generations."

Parking on Chancellor St.
238-0790

EVERYTHING FROM ANNIE TO ZELIG.

The Video Company offers the most complete selection of VHS and Beta movie videocassettes in the area, ranging from Hollywood's greatest and latest to Bergman and Fellini to adult films. (Note that home delivery and pick-up is available in center city for an extra fee.) Stop in or call for our free catalogue.

Keep in mind our daily "Matinee Special": rent a movie and return it the same day before 4PM, and we'll charge you just half the usual rental rate.

We also stock video games and self-improvement tapes, as well as blank tapes and accessories. And if your video equipment needs maintenance or service, give us a call. We're open every single day of the year.



Mon.-Sat.: 10AM-10PM
Sunday: Noon-7PM

410 S. 2nd Street • Head House Square • Philadelphia • 923-3434

What Came Down Will Go Up

Admirers of the historically certified nine-foot high brick wall on Cypress Street behind the five Girard houses in the 300 block of Spruce Street were outraged when a section of it was demolished in August to give access to parking spaces. Neighbors, the SHCA and parents of toddlers who use the Three Bears Park directly to the south were quick to protest to our councilman, Leland Beloff, the Department of Licenses and Inspections, the Historical Commission and to Thomas Scannopieco, president of Historical Developers Inc., who caused the demolition. The happy result is that Historical Developers have promised Councilman Beloff they will restore the wall and will not apply for a zoning variance to permit parking in the garden.

It all began when Historical Developers purchased the decaying property at 328 Spruce Street for conversion to a five or six unit apartment/condominium. The developers planned to use the garden for parking with access through sliding gates along Cypress Street. Through what has been called a "misunderstanding" of the developers' intention, approval to replace the wall was granted by the Historical Commission. According to L&I, the developers did not request approval for parking. Indeed, had they done so, they would not have met open space and rear yard requirements, and would have needed a zoning variance.

Thanks to the fine leadership of Irene Shrank and the help of Councilman Beloff, the section of the 152-year-old wall will be put back, unfortunately without its original marble coping which was last seen beneath a load of bricks in a dumpster. The trunks of the wisteria vines are intact, it should grow back in a few years to cover the ugly scar.

McCrea House . . . (continued from page 1)

also donated part of their services, but we are still far from our obligation. So we are planning to throw a terrific party in late January down in the old vaults. All who make a tax-deductible gift of \$15 or more per person will be invited. Please draw your check to "Landmarks/McCrea Fund" and send (along with your name, address and phone number) to: McCrea Fund, Philadelphia Society for the Preservation of Landmarks, 321 South 4th Street, Philadelphia, PA 19106.

Contribution to the

Landmarks/McCrea Fund.

Amount enclosed \$ _____

Name _____

Address _____

Phone _____

JOIN US

Tear off and mail to:

Society Hill Civic Association
P.O. Box 3
Philadelphia, PA 19105
attention: Rosalie Thompson, Treasurer

Please renew my (our) membership in the Association.

Name _____

Address _____

_____ Phone _____

Check one:

_____ 1 person \$6: _____ 2 persons same address \$10

_____ I request a waiver of dues.

Meet The Author Of 'Hail Columbia'

Joseph Hopkinson and Emily Mifflin were married by Bishop William White on February 27, 1794, at the home of the bride's father, the Hon. Thomas Mifflin. The young couple then established their first home at 132 (now 338) Spruce Street, in Society Hill.

Francis Hopkinson, the father of Joseph, was a signer of the Declaration of Independence and Emily's father was a member of the Continental Congress and governor of Pennsylvania from 1790 to 1799.

As his father and grandfather before him, Joseph was a lawyer, practicing his profession from his Spruce Street residence. Like his father he was talented in music, literature and the arts—interests his wife shared with him. During the six years of residence on Spruce Street, Joseph Hopkinson accomplished many notable achievements. In 1795 he edited the First American edition of the Plays and Poems of William Shakespeare. His law practice prospered and, in 1797, he was appointed Judge of the Federal District Court of his district, a bench his father occupied until his death in 1791.

The young Mr. Hopkinson's greatest contribution to the arts came in 1798, when he wrote the song, "Hail Columbia" to the music of the President's March. Friction between France and England had been growing and the citizens of the United States were divided in their loyalties between the two countries. Acts of hostility had already occurred and the American spirit was threatened. The actor-singer Gilbert Fox felt that the spirit and unity of the public could be strengthened by a new patriotic song, and knowing of Joseph Hopkinson's abilities in music and writing, appealed to him. The President's March had long been a popular and national tune, so Hopkinson attempted to compose a similar verse. "Hail Columbia" was introduced at a benefit on Wednesday, April 25, 1798 at the New Theater on Chestnut Street, and was a huge success. The house in which it was written was marked by a bronze plaque in the 1930s by the Pennsylvania Historical Commission.

Joseph Hopkinson continued to lead a long and creative life after he and his wife moved from Spruce Street in 1800. He was a friend to many of the important people of his day, including Joseph Bonaparte, the ex-king of Spain. He died in 1842 and is buried in Bordentown, New Jersey.



DARTS AND LAURELS

Laurel—To the resident on the southwest corner of 5th & Spruce Street for repairing the brick wall bordering his parking spaces and making it a much more pleasant shopping route.

Laurel—To the Valvardi Funeral Home for their beautiful black-topped parking lot and super brick wall.

Dart—To the residents of the property at 505 Pine Street for thinking that garbage day is EVERYday. Clean up your act! It's a nice neighborhood you live in. You're making people very unhappy.

Laurel—To the Society Hill Towers Resident Association for replacing the two Scrub Oak trees felled by polluting bus fumes with White Pine trees horticulturists claim will stand a better chance.

Laurel—To Pennsylvania Hospital for "sprucing up" on 7th & 8th Streets with redwood planters.

Dart—To the people who think those planters are trash containers.

Laurel—To the vendor outside the hospital building at 7th & Spruce who provides his own trash receptacle for customers who heretofore were prone to leave a trail of leftovers throughout the neighborhood.

Laurel—To the industrious old gentleman, Mike, who "polishes up the handles on the big front doors." Though he's not the Ruler of the Queen's Na-vy, he's definitely an asset to So-ci-e-ty.

Dart—To the city for not assuming its responsibility and fixing the old brick sewerpipe that is causing the sinking of American Street (between 2nd and 3rd).

Laurel—To crossing guard Barbara Wormley whose watchful eye and sharp reflexes saved a young McCall student from a motorist who "didn't SEE the light."

Dart—To the people responsible for the old wisteria vine on Cyprus Street.

Dart—Shame, shame! Neighbors in the 500 block of Pine are in a rage again! Glass is hazardous. It should not be left on the sidewalk for two weeks.

Laurel—To the Secret Service who authorized the sanitization of the 500 block of Pine St., including the glass referred to in the dart above, in deference to Geraldine Ferraro's pre-election visit.

Joanne Davidow
and
Dolores La Greca

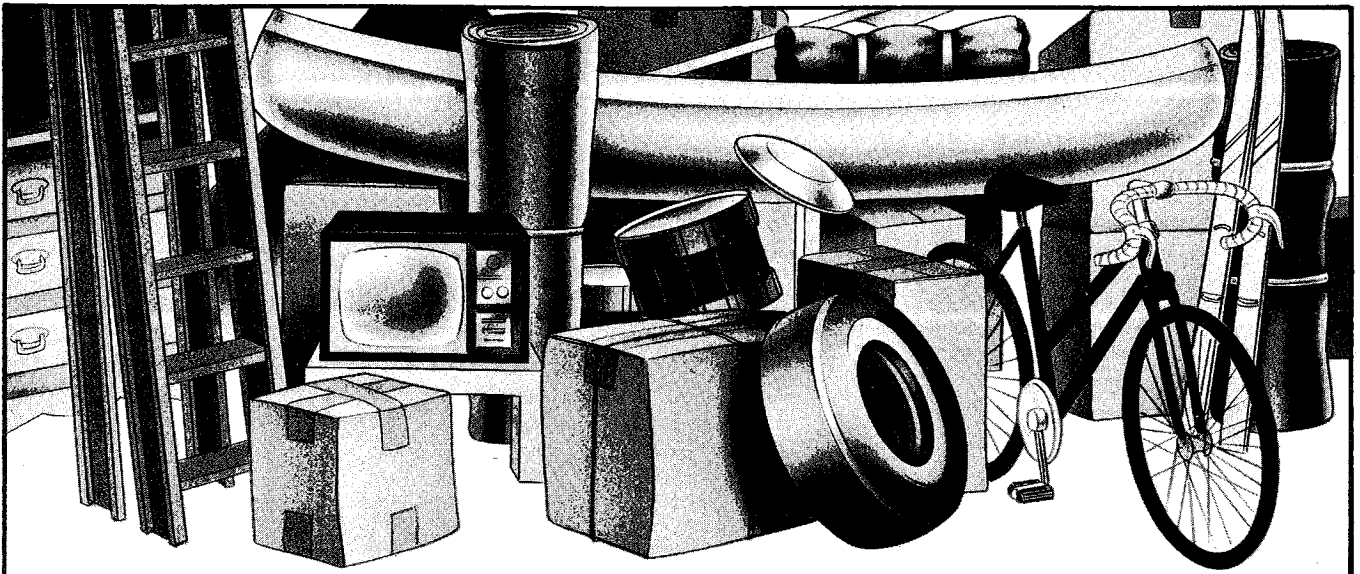
MIDTOWN REALTY CORP.

1700 Walnut Street • Philadelphia, PA 19103

546-0550

RESIDENTIAL & CONDOMINIUM
SPECIALISTS





Rent a place to stow your stuff.

Self-Stor. It's the perfect way to get out from under the clutter. Store anything you don't need regularly. Over-sized items—boats, motorcycles, trailers. Or seasonal things—winter clothing, lawn furniture, bikes or sleds. Stash away whatever's in your way. And give yourself some breathing room.

For information, call **336-1000.**

- Low rates (from \$24/mo.)
- Easy to reach from Center City, South & Southwest Philly.
- Many size units (from 5' x 5' x 8').
- Rent by the month (no long term lease required).
- Private—only you have the combination to the computerized lock.
- Secure—fenced and lighted. Guard on duty.
- All metal construction.
- Open 7 days a week (closed Christmas).
- Extended hours 7 a.m. to 7 p.m.

SCHUYLKILL
SELF-STOR
 DRIVE-UP SELF-STORAGE

SCHUYLKILL EXPRESSWAY AT UNIVERSITY AVENUE EXIT 3
 34th Street South, 1600 S. Warfield St.

