



Box 3, Philadelphia, Pennsylvania 19105

October, 1988

## HISTORICAL SURVEY NOW COMPLETE

Dr. Richard Tyler, executive director of the Philadelphia Historical Commission, presented a report to the September 28 SHCA meeting regarding the progress of the project giving Society Hill protection under the 1984 Historic Preservation Ordinance.

The project was initiated in June 1986 by SHCA's former President Myrna Field Baum at the time the city's Redevelopment Authority covenants expired. These covenants governed the renovation of Society Hill homes, insuring the visual continuity and integrity of the area. The SHCA and a majority of residents, concerned that there be an approval system to replace the Redevelopment Authority's stylistic and architectural guidelines, were responsible for implementing the project — a master plan of the neighborhood involving an exhaustive house-by-house inventory.

Dr. Tyler reported that the survey is now complete, and Society Hill will be nominated for historical certification most likely before the beginning of the new year. Although the district has National Register designation, local historical designation will require review of all applications for any work by Philadelphia's Historical Commission before the Department of Licenses and Inspections can issue a permit.

## SOUTH STREET TASK FORCE

The South Street Task Force was organized this summer by the city's managing director in response to "wolf pack" assaults. Composed of business and neighborhood groups, it also includes representatives from the police, streets, parking and planning commissions. This task force has been meeting regularly to address the problems of security, sanitation, transportation, long-range planning and "quality of life" issues in the area.

In addition, the task force has defined the "core" area to be: Bainbridge to Lombard Streets and the river to Broad Street. The "impact" area in Society Hill is from the river to 4th and Walnut Streets, and from 4th Street to Broad, with Spruce Street as the northerly boundary. The task force will assess the needs of the unique core area versus the protection necessary to preserve impacted areas at future meetings.

## Neighbors Unite to Oppose Sports Bar

Are you familiar with the term, "Sports Bar?" The Blumenfelds, father and son, developers of Abbotts' Square, are planning to promote this new saloon as "The Original Philadelphia Sports Bar." Located on the west side of 2nd Street between Lombard and South Streets, it will be close to Flanigan's, the bar at the corner of South and 2nd Street, another drinking establishment in which the Blumenfelds have part interest.

The proposed addition to the South Street scene will be a 15,000 square foot, two-story adult amusement arcade, which will include video games, simulated motorcycle rides, skeet shooting, and mini-basketball games. The owners' claim "it will attract upscale patrons and will help South Street business." The number of patrons expected is upward of 1,000 on week-nights and that could be doubled on weekends.

The Sports Bar's liquor license application is now before the Pennsylvania Liquor Control Board. A hearing will be conducted in Harrisburg on October 5. It is hoped that their decision will take into account community opposition when it

considers the recommendation of their hearing examiner for the LCB in Philadelphia, Timothy Savage, who will report the results of his investigation.

Many neighbors have been and continue to be horrified at the prospect of the Sports Bar, which will increase traffic and parking problems, as well as increase the potential for violence, trash, drugs, and vandalism that such large numbers will bring to the already overloaded area, with twenty-two bars located within a few blocks. A protest was organized by SHCA on August 5 at which time an estimated 150 residents participated. Concerned residents have also written letters to protest the granting of a liquor license. James Goodman, chairman of the LCB, wrote in response to one letter writer, "In view of the fact that numerous additional protests have recently been filed, we will also consider them when we review the results of the hearings."

An attorney has been hired to represent several local organizations in this cause, including SHCA, the Queen Village Neighbors Association, and the South Street Neighborhood Association. Support for this legal fund was approved and \$250 allocated by SHCA's board of directors at the September 28 meeting. Should the Sports Bar be issued a liquor license, however, an appeal process will require additional community and financial support.

For information about the results of the October hearing, or if you want to know where to write or whom to call, contact the SHCA's administrator, Fluffy Palmer at 928-1313.

## NEWS AT PRESS DATE:

The LCB hearing in Harrisburg has been postponed to November 19th. Please consider sending a check earmarked for the Sports Bar Legal Fund and mail it to: Norm Wallin, SHCA Treasurer 216 Pine St., Phila. PA 19106.



## MARK YOUR CALENDARS!

All SHCA board and general membership meetings are held on Wednesdays at Old Pine Community Center, 4th and Lombard Streets. The next general membership meeting will begin with refreshments at 7:30 p.m. on December 14. The remaining board meetings for this year, which are open to all members, are as follows: October 19, November 30 at 8 p.m. and December 14 at 6:30 p.m.

**Candidates' Night:** Meet the candidates running for state election in our district on Tuesday night, November 1 at the OPPC at 7:30 p.m.



**Our name says it all.  
An exclusive staff in an exclusive neighborhood.  
Exclusively!**

**For the very best in Sales, Rentals and Service.**

## JEFFERSON HOSPITAL WASTE INCINERATOR PROJECT

At the September 28th general membership meeting, David Robbins, associate vice president of Jefferson Hospital presented a proposal regarding the development of an on-site incinerator for infectious and hospital waste.

Concern about the potential harmful effects was voiced by several community residents, including an SHCA member with professional expertise in waste management. Mr. Robbins stated that Jefferson would use state-of-the-art technology to dispose of hospital waste. However, our resident in this field argued that incineration of infectious waste is an emerging technology with rapidly changing state regulations. In view of this, its siting in an urban area seems inappropriate at this time. Other SHCA members expressed similar concern, and the issue will be examined further.

## PERELMAN TOY MUSEUM CLOSED

The Perelman Toy Museum, an important historic and tourist site in Society Hill since 1969, has closed its doors as a direct result of an armed robbery that occurred on August 5. Immediately upon learning of the robbery, during which two gunmen bound and gagged the caretaker, the owner of the museum, Leon J. Perelman, decided to close the museum and liquidate the collection. Consisting of almost 3,000 antique toys, the collection was considered one of the best in the country, with items dating to the Civil War. The robbers managed to seize about 100 marbles, but bulletproof display cases prevented a major theft.

Directly following the robbery Mr. Perelman privately sold the collection and the building to Alexander Acevedo, a New York art and toy dealer. Mr. Acevedo does not intend to reopen the museum. In fact, a private sale of the collection, estimated to be valued at over \$3 million, was conducted at the site on September 16, and its dispersal to serious collectors has already begun.

The townhouse at 270 S. 2nd Street is a Colonial landmark. Built in 1758 for Captain James Abercrombie, it was the tallest structure in the city at that time. Its current value is estimated at \$1 million. In a conversation with Mr. Acevedo, a representative of the SHCA learned that the house is under-agreement of sale to another buyer, and by press date the negotiation probably will have been concluded. Mr. Acevedo assures the SHCA that by terms of his agreements of sale, the building will continue to be maintained respectful of its historic heritage and consistent with the community's standards.

The Perelman Toy Museum attracted about 40 to 50 visitors a day and played a distinctive role in Society Hill. It will be missed.

## THREE BEAR PARK

Three Bear Park, a small playground between Cypress and Delancey Streets, just behind the Hill-Physick-Keith house museum on 4th Street, has been delighting small children since 1965 and is an inviting oasis for people of all ages. The park's name derives from its charming sculpture of the three bears, which also functions as a climbing apparatus for inventive children.

This park has had problems for some time, but recently it has been under attack from several fronts: lack of city funding; from drug users who leave debris and disturb the neighbors throughout the night; from graffiti and vandalism.

In the summer, concerned neighbors and parents met at the Hill-Physick-Keith house in an attempt to find a solution to the disrepair, poor lighting and lack of police protection. John F. Collins, A.S.L.A., (American Society of Landscape Architects) architect of Three Bear Park, addressed the group. He described the history of the park's development and outlined his view of needed changes.

Councilman Tayoun has promised his support for the park and will include the cost of needed repairs in next year's city budget.

Friends of Three Bear Park plan to organize a special event day at the playground to increase the community's awareness of its need for moral and financial support.

## UPDATE: WASHINGTON SQUARE

Representative Thomas Foglietta's office reports that passage of legislation to award Washington Square Park national recognition is unlikely to occur before this session of Congress adjourns in October. However, his office assures us that legislation will be introduced again in the next Congress, and the six-year-long effort to include the square as part of Independence National Historic Park will continue. A companion Senate bill should also be supported by Senator John Heinz. The square, at 6th and Walnut, is the burial site for 2,000 Revolutionary soldiers. If united by law to the federal park system, which it neighbors in spirit as well as locale, it will receive the status and protection it deserves. Write to these Congressmen, endorsing your support of this important legislation:

For HR3145

Thomas M. Foglietta, 10402 Federal Building, 600 Arch Street, 19106, or House Office Building, Washington, D.C. 20515

For S1513

John Heinz, 9456 Federal Building, 600 Arch Street, 19106, or United States Senate, Washington, D.C. 20510

**Some people believe that all video stores are the same.**

Not quite. Some video stores are frantic, take-a-number-and-wait kinds of places. Others stock a few of the recent Hollywood biggies—and only the recent Hollywood biggies. And some stores let you walk out with videocassettes that are, shall we say, not of the best quality.

Happily, you have an alternative. The Video Company. The staff is friendly and informed. The atmosphere is relaxed and conducive to browsing. We stock thousands of movies in both VHS and Beta—and not just the blockbusters. (And if, by chance, we don't have the movie you want, we'll gladly get it for you.) Rest assured that every video-cassette you rent or buy from us is top quality. And we repair equipment, do movie and slide transfers, and we sell accessories and blank tape.

Come visit us. We're open every single day of the year, including all holidays. If you've been getting your video movies elsewhere, we think you'll notice the difference.

**Lowest prices in town!**  
**\$2.00 a day**  
**\$1.50 matinee**

**Mon-Sat: 10AM-10PM**  
**Sunday: Noon-7PM**

410 S. 2nd Street • Head House Square • Philadelphia • 923-3434



# MEET OUR OFFICERS AND DIRECTORS

## A Message from the President

With restful summer vacations ended and children back in school, the coming of fall signals the beginning of the SHCA's year, and we look forward to another challenging and productive period.

Recently we have learned that a number of neighbors believe that the SHCA is fully staffed and funded by the city and is an arm of city administration — a surprising misapprehension! Followed to its logical conclusion, there would then be no need for individual neighbors to support the SHCA, either financially or by participation in meetings, committees or activities. To clarify, I emphasize that only a portion of our budget is made up of city and state funds, and we have only one paid employee — our new administrator, Fluffy Palmer, who works part time.

The effectiveness of our organization relies on the participation of Society Hill residents in our meetings and community projects, as well as the establishment of a financial base through dues collection and fund-raising activities. Just about every day an issue arises which has a direct effect on the quality of life here — liquor license applications, police protection, trash pickup, building permit applications, playground and park maintenance. We require and look forward to a continued growth in membership, because without a strong and effective SHCA, the issues will be decided without *your* input.

Make no mistake, each of us must act to maintain and protect our neighborhood!



1988-89 Officers (from left) Faith Lemmer, Aaron Beyer, Becky Stoloff, Norm Wallin not present

## SHCA Board Directory:

Aaron Jay Beyer (P) 632 Spruce Street,  
299-2030 (w) 925-4288 (h)

Becky Stoloff (VP) 234 Spruce Street,  
627-4910 (h)

Norm Wallin (T) 216 Pine Street,  
928-2848 (w) 574-9848 (h)

Faith Lemmer (RS) 236 Pine Street,  
923-7142 (h)

### NORTHEAST QUADRANT

Maxine Dubin, 271 S. 4th Street,  
922-1386 (h)

Wayne Weisman (CS), 210 Locust Street - 2F  
636-9123 (w), 627-1828

Julie Jacobs, 247 S. St. Joseph's Way,  
923-1748 (h)

### NORTHWEST QUADRANT

Joel Chernock, 719 Spruce Street,  
625-9852 (h)

Sidney Hack, Independence Place  
Tower 2-1409,  
925-3438 (h)

Howard Lander, 709 Spruce Street,  
574-0456 (w) 574-0456 (h)  
210 Locust Street

### SOUTHWEST QUADRANT

Nancy Silber, 600 Spruce Street,  
625-4849 (h)

Sally Smith, 535 Pine Street,  
922-5180

Ann Spector, 410 S. 6th Street, 19147  
546-5928 (w), 928-1928 (h)

### SOUTHEAST QUADRANT

Elliot Fields, 123 Pine Street,  
609-779-0281 (w), 922-2207 (h)

Fred Ottaviano, 341 S. 4th Street,  
422-3806 (w), 925-2544 (h)

Burt Weiss, 329 S. 2nd Street,  
569-8736 (w), 923-5336 (h)

### HIGH RISE REPRESENTATIVES

Hopkinson House, 602 Washington Sq. So.,  
Rosemarie Fluehr,  
985-1400 (w), 925-6986 (h)

Independence Place, 241 S. 6th Street,  
Ruth Rubenstein, Tower I - Unit 603  
922-3204 (w)

Society Hill Towers, 200 Locust Street,  
574-6335 (w), 625-4932 (h)

### TOWN WATCH REPRESENTATIVE

Hillary LaViolette, Society Hill Towers  
523-7527 (w), 928-1354 (h)

### IMMEDIATE PAST PRESIDENT

Myrna Field, 2 Blackwell Place,  
545-7477 (w), 238-9550 (s)

### EX-OFFICIO

Joy Lindy, 124 Delancey Street  
922-4042 (h)

## President:

Aaron Beyer and his wife, Fran, have been residents of Society Hill since 1977, where they live with their infant son, Jared. He is a partner with the Philadelphia law firm of Fox, Rothschild, O'Brien and Frankel. He is a past vice-president and board member of the SHCA, has worked as a block captain and with Town Watch. He has been a member of the Georgetown, D.C. Civic Association.

## Vice-President:

Rebecca Stoloff has been a Center City resident for 25 years, the last 15 years in Society Hill. She was employed as director of administration for Taylor Lock Company. She has served on three previous SHCA boards and as chairman of the zoning committee. Becky, as she is better known, is chairperson of the docents guide steering committee for the Foundation for Architecture and is a volunteer for Women's Way and Brandeis University.

## Treasurer:

Homer N. "Norm" Wallin moved to Pine Street from Rose Valley, Delaware County in late 1984. He is employed by the Keystone Shipping Company on Chestnut Street as engineering manager responsible for care and repair of tankers. His wife, Kitty, is employed by the Educational Improvement and Resource Center, Sewell, N.J. Norm is serving his third term on the SHCA board.

## Recording Secretary:

Faith Lemmer, serving her third term as recording secretary, has been a Society Hill home owner since 1962 when she and her late husband, Ralph, purchased and began restoring their Pine Street house. She has been active in the fight for the I-95 cover, trying to save 156 historic houses on Front Street, Save Spruce Street, and many zoning matters. Ralph was one of the founders and a mainstay of Society Hill's Town Watch and their son, Tim, was on the SHCA board until he moved away from the neighborhood.

## Continuing Director:

Myrna Field Baum was SHCA's president two years ago. She is a graduate of the University of Pennsylvania Law School and is presently in private practice. She has been president of the Mid-Atlantic Legal Foundation, district counsel for the U.S. Equal Employment Opportunity Commission, director of the Mayor's Office of Consumer Services, and an assistant district attorney in Philadelphia. She is a member of the Fairmount Park Commission advisory council. She is committed to completing the historic survey and certification of Society Hill.

## Business Phone

The SHCA and the Society Hill Town Watch are sharing one phone number to serve as the official business number for both organizations. Please note the number: 625-9255.

## City Tavern

**Fine Food & Spirits  
Private Dining Rooms**

Second St. near Walnut  
Philadelphia, PA 19106

Reservations  
**923-6059**

# SHCA QUADRANT DIRECTORS



Ann R. Spector

## (SW) Ann R. Spector

Ann is a psychologist in private practice in Center City. She graduated from Penn State and received advanced degrees from Villanova and the University of Pennsylvania. Ann lives with her husband, Larry, and two daughters, Elizabeth (5) and Jennifer (2). She lived in the Washington Square West area for five years before her family moved to Society Hill four years ago. She is interested in improving conditions at the Starr Garden and Three Bear Park, improving conditions on South Street, and seeing the leash law and "clean up after your dog" law enforced.



Fred Ottaviano

## (SE) Fred Ottaviano

Fred is the father of two children, 19 and 21 years old. He and his wife, Pierette, purchased their home in 1967, spent two and a half years restoring it and received historical certification in 1969. He is manager of project administration for a Philadelphia-based international engineering and design company. Fred considers himself a neighborhood activist on issues that affect quality of life in Society Hill, most recently in the legal battle involving horse-carriage regulations. He also represents a portion of Society Hill as an elected committee person of the fifth ward, second division.

## (SW) Sally Smith

Sally Smith is a long-term resident of the area and has been a SHCA member for nine years. Her husband, Arthur, served as a SHCA quadrant director previously. She is a registered nurse and the mother of two small children. Sally is a volunteer with Philadelphia Open House, the City Gardens Contest and the Pennsylvania Hospital Auxiliary. Her areas of community interest include playground improvements, cleaner streets, promotion of SHCA membership, community safety and zoning matters.



Sally Smith

## (SE) Burton Weiss

Burton Weiss is a psychiatrist in private practice in Center City and Assistant Professor of Psychiatry and Internal Medicine at Hahnemann University, and has had occasional dealings with the city government around issues of mental health care. He has lived in Society Hill with his wife Leslie and two children, Nichole and Brian, for the past 15 years, the last ten as a homeowner. He has long admired Society Hill and looks forward to the opportunity to serve the neighborhood.

## (SE) Elliot Fields

Elliot Fields and his wife, Peggy, have been Society Hill residents since 1972 when they purchased one of the last remaining houses on their block needing renovation. They are parents of a daughter. Elliot has a law degree from Villanova and is in the tire retreading business in New Jersey.



Nancy Silber

## (SW) Nancy L. Silber

Nancy L. Silber, a Boston native, moved to Philadelphia in 1976. The renovation of the historic house she and her husband purchased in 1982 brought her into contact with the Redevelopment Authority and Historical Commission and kindled her interest in preservation and zoning issues confronting our neighborhood. As a mother of two children she is especially interested in preserving and upgrading our local parks. Nancy worked for nonprofit organizations as an arts administrator before graduating from Temple University Law School in 1984.



Fluffy Palmer

## SHCA ADMINISTRATOR Fluffy Palmer

Fluffy Cooper Palmer has been a resident of the South Street area since 1984 and is a vice president of the South Street Neighborhood Assn. She serves on the collections committee of the mayor's recycling commission. Fluffy is an editor of *Free the Streets*, a citizens advocate newspaper. She is knowledgeable in trash and garbage issues, police protection, liquor licenses, and the workings of city government.

Her responsibility for the SHCA is to act as coordinator for many of its projects and committees, such as membership, zoning, and *The Resident Newsletter*, as well as to serve as the link from one administration to the next, providing continuity.

Aside from her work with SHCA and SSNA, Fluffy is a professional artist whose oil paintings are exhibited in private and corporate collections.



Julie Jacobs

**(NE) Julie Jacobs**

Julie returned to the Philadelphia area, via San Francisco, about three and a half years ago after a 20 year departure. She lives in Society Hill with her husband and three children. Julie has a B.S. Ed. from Miami University and an M.S. in counseling. She is a Penn State University instructor in the department of Individual and Family Studies.

**(NE) Maxine Dubin**

Maxine, her husband and three children have lived in Society Hill since 1970. She has been a quadrant director before, has distributed newsletters and welcomed new residents on behalf of the SHCA. Maxine works for Charles B. Fleming & Associates and is active with the Jewish Federation of Philadelphia. She also has served on the Society Hill Synagogue board.



Wayne Weisman

**(NE) Wayne Weisman**

Wayne has lived in the Society Hill Towers for four years. He is serving his third year on the SHCA board. A graduate of Penn and the University of Michigan Law School, Wayne is a principal in an investment company which invests in and rehabilitates distressed businesses.



Sidney Hack

**(NW) Sidney Hack**

Sidney is a native of Brooklyn, New York. He and his wife, Anita, live at Independence Place and have two children and four grandchildren. Sidney received a B.A. in Natural Science from Adelphi University (N.Y.) in 1982. He imported and manufactured musical instruments, sold to and managed business for Gulf & Western before retiring in 1979. Since moving to Philadelphia in 1986, Sidney has volunteered as a counselor to SCORE (Small Business Admin.) as a coordinator of the Washington Sq. Assn, and as a volunteer in the Maritime Museum library.

**(NW) Howard Lander**

Howard Lander has lived in Society Hill for 13 years. He is a builder and real estate developer, working mostly in Center City. He has a B.S. in management from Wilkes College in Wilkes-Barre, Pennsylvania. His community involvements have been with Town Watch, the South Street Neighbors Ass'n. in Queen Village and as a member of the SHCA. He is married and the father of two children.

**(NW) Joel Chernock**

Joel Chernock has been a Society Hill property owner since 1970. His wife, Susan Dictor, was a SHCA quadrant director for the past three years. Their family includes two daughters, Elyssa and Sarina. Joel is presently working for the school district of Philadelphia as a lead teacher in the Get Set Day Care Program. At the present time, upgrading and improving neighborhood playgrounds is important to the Chernock-Dictor family.

**SAUL J. WEISFELD, D.M.D.**  
 COMPLETE DENTAL SERVICES

*Convenient Location*  
*Personalized Care*



SOCIETY HILL TOWERS SHOPPING PLAZA  
 295 ST. JAMES PLACE · PHILADELPHIA, PA 19106  
 (215) 592-7795

**PAUL HERTEL & CO., INC.**  
 Established 1908  
*Insurance*

AUTO  
 RETAIL  
 MARINE  
 AIRCRAFT  
 PERPETUAL  
 HOMEOWNERS  
 PROFESSIONAL  
 CONDOMINIUMS  
 MANUFACTURERS

N.E. Cor. 3rd & Chestnut Sts.  
 Philadelphia, PA 19106  
 Telephone: WA 5-7656

**HEALTH TIP #1:** For all you joggers, have you considered doing Town Watch rounds while you stay fit? Why not donate a run a month! This is a chance to do your civic duty while doing what you would be doing anyway. The Town Watch number is 625-9255.

**HEALTH TIP #2:** For all you more casual exercisers, why not carry a shopping bag to pick up unsightly debris on your health strolls?

## HIGHRISE REPRESENTATIVES



Rosemary Fluehr

### Rosemary Fluehr (Hopkinson House)

Rosemary is a graduate of Temple University who has lived in the Hopkinson House for four years and is its representative to the SHCA. She is employed as a real estate broker for Coldwell Banker and will serve as president of the Center City Council for the Philadelphia Board of Realtors in 1989. Rosemary is a tennis player, a member of the Society Hill Club and served on the committee for the first event scheduled by the Washington Square Association to benefit the historic park.

### Ruth Rubenstein (Independence Place)

Ruth is a Philadelphia native who has lived in Society Hill for six years and is a member of the Independence Place's south tower condominium board and its representative to the SHCA. She graduated from Temple with a B.S. Ed., received an M.A. from Antioch and is certified as a reading specialist from the University of Pennsylvania. She has taught fourth grade at McCall school for the last four years.



Fred Lockett

### Fred Lockett (Society Hill Towers)

Fred serves on the owners' association board of directors of the Society Hill Towers and is their representative to the SHCA. He has lived in the towers for three years and has been employed by the Federal Reserve Bank for the last 15 years. He is also an agent for Landmarks for Living Realty, a real estate firm. Fred is a boater who keeps his boat at Penn's Landing, a volunteer for the restoration of the Barnegat light ship, and he also directs a DeLorean sports car club. His civic interests include his opposition to more bars and more horse-drawn carriages. He supports controlled commercialization in limited areas in the South Street strip, Market/Chestnut Streets and along the waterfront.

## News About Cable TV

Valena Dixon, of Greater Media Cable, advises that our area is currently in a testing period to insure future good service. Some streets in Society Hill did not require underground work and, therefore, are already tuned in. By the end of the year, the power will probably be turned on throughout the neighborhood, with Channel 66 broadcasting 6 hours of community news daily.

Cable representatives include Barbara Harden, director of sales and marketing, as well as Valena Dixon. Both are available to answer your questions at 468-2222.



Washington Square Gallery, Ltd.

rare prints and maps

---

229 south ninth street, philadelphia, pennsylvania 19107 215-923-8873

# SHCA COMMITTEE'S 1988-89

## CARRIAGES

Fran Beyer, 632 Spruce Street,  
925-4288 (h)  
Marty Katz, 507 Addison Court,  
592-8844 (h)  
Fred Ottaviano, 341 S. 4th Street  
422-3406 (w), 925-2544 (h)  
Norm Wallin, 216 Pine Street,  
928-2848 (w), 574-9848 (h)

## CLEAN UP DAY

Joyce Cole, 222 Delancey Street,  
569-9959 (w), 925-7103 (h)  
Liz Ostrander, 408 S. 6th Street,  
922-6179 (w), 922-0895 (h)  
Sid Hack, Independence Place T2,  
925-3438

## CRIME and TOWN WATCH

Hillary LaViolette, Society Hill Towers,  
523-7525 (w) 928-1354 (h)  
Faith Lemmer, 236 Pine Street,  
923-7142  
Marianne Millet, 247 Pine Street,  
625-8553 (w), 542-4161 (h)

## HISTORICAL CERTIFICATION

Myma Field, 2 Blackwell Place  
545-7477 (w), 238-9550 (h)  
Bernice Hamel, 302 S. 2nd Street  
925-4363 (h)  
Ellen Miller,  
627-6005 (w)

## I 95

Lorna Katz Lawson, 20 B 200 Locust St.,  
Society Hill Towers,  
351-0560 (w), 922-0155 (h)  
Joy Lindy, 124 Delancey Street,  
922-4042  
Becky Stoloff, 234 Spruce Street,  
627-4910

## JEFFERSON HOSPITAL INCINERATOR

Bernard Hamel, 302 S. 2nd Street,  
925-4363  
Lois Mae Moody, #5 Blackwell Place 19147,  
928-1044  
Andrew Scott,  
732-0412  
Marvin Nadel  
238-1733

## LIQUOR CONTROL BOARD

Lois Mae Moody, #5 Blackwell Place,  
928-1044

## MEMBERSHIP

Susan Dictor, 719 Spruce Street,  
625-9852 (h)  
Joy Lindy, 124 Delancey Street,  
922-4042 (h)  
Laura Skeeler,  
923-4974  
Becky Stoloff, 234 Spruce Street,  
627-4910 (h)  
Hilary LaViolette, Society Hill Towers,  
523-7527 (w), 928-1354 (h)

## NEIGHBORHOOD MAINTENANCE

Harris Nadley, 325 S. 3rd Street,  
925-4282

## NEWSLETTER

Ruth Dugan, 238 S. 3rd Street,  
922-3915 (h)  
Nancy Frenze, 532 Manning Walk,  
923-5459 (h)  
Bernice Hamel, 302 S. 2nd Street,  
925-4363 (h)

## NEW MARKET

Norm Wallin, 216 Pine Street,  
928-2848 (w), 574-9848 (h)  
Elliot Fields, 123 Pine Street,  
922-2207 (h)  
Joy Lindy, 124 Delancey Street,  
922-4042 (h)  
Burt Weiss, 329 S. 2nd Street,  
569-8763 (w), 923-5336 (h)  
Lee Truscott, 8 Blackwell Place,  
925-9814  
Don Adams, 113 South Street,  
922-4171

## NEWSPAPER BOXES

Aaron Beyer, 623 Spruce Street,  
299-2030 (w), 925-4288 (h)  
Bernie Cleff, 715 Pine Street,  
922-4246 (w), 922-7663 (h)  
Lu Bangert, 425 Spruce Street,  
925-2202

## PARKING POLICY

Becky Stoloff, 234 Spruce Street,  
627-4910 (h)  
Maxine Dubin, 271 S. 4th Street,  
922-1386 (h)

## PARKS and PLAYGROUNDS

Nancy Silber, 600 Pine Street,  
625-4849 (h)  
Susan Dictor, 719 Spruce Street,  
625-9852 (h)  
Julie Jacobs, 247 S. St. Joseph's Way,  
923-1748 (h)  
Ann Spector, 410 S. 6th Street,  
546-5928 (w), 928-1928 (h)

## PENN'S LANDING

Elliot Fields, 123 Pine Street,  
922-2207 (h)  
Norm Wallin, 216 Pine Street,  
928-2848 (w), 574-9848 (h)  
Fred Lockett, 220 Locust Street,  
625-4932 (h)  
Suzette Jones, 2808 Hopkinson House,  
925-7076 (h)  
Ellen Berkowitz, 210 Locust Street #6-G,  
625-2774  
Benjamin Kuby, 228 S. 4th Street,  
592-0222  
Marsha Moss, 220 Locust Street 27-D  
925-3384  
Jim Moss, 220 Locust Street 27-D  
925-3384  
Don Adams, 113 South Street,  
922-4171

## PENNSYLVANIA HOSPITAL

Bernie Cleff, 715 Pine Street,  
922-4246 (w), 922-7663 (h)  
Billie Katz, 507 Addison Court,  
592-8844 (h)

## SOUTH STREET

Howard Lander, 709 Spruce Street,  
574-0456  
Ann Spector, 410 S. 6th Street, 19147,  
546-5928 (w), 928-1928 (h)  
Becky Stoloff, 234 Spruce Street,  
627-4910 (h)

## TV & MOVIE PRODUCTION LIAISON

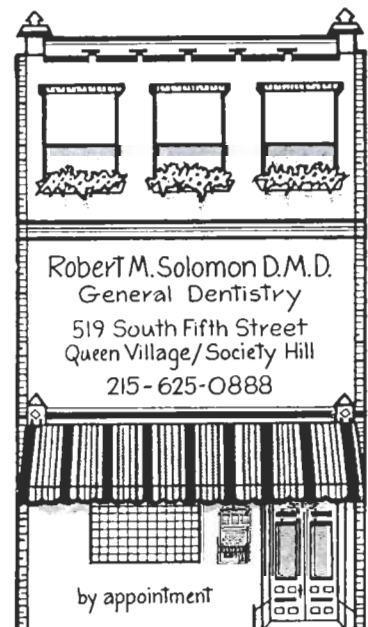
Joy Lindy, 124 Delancey Street  
922-4042 (h)

## WASHINGTON SQUARE

Sidney Hack, Independence Place Tower 2-1409,  
210 Locust Street,  
925-3438 (h)  
Aaron Beyer, 632 Spruce Street,  
299-2030 (w), 925-4288 (h)  
Suzette Jones, 2808 Hopkinson House,  
925-7076  
Annette Grishman, Two Independence Pl. D 1707  
923-3707  
Ozzie Grishman,  
Jean Nadel, 531 Cypress Street,  
238-1733 (h)  
Marvin Nadel,

## ZONING

Steve Skale, 533 Pine Street,  
465-2900 (w), 238-1040 (h)  
Joyce Cole, 222 Delancey Street,  
569-9959 (w), 925-71033 (h)  
Wayne Weisman, 210 Locust Street - 2F,  
636-9123 (w), 627-1828 (h)





Are you in need of real estate assistance?

**OSCAR I. STERN ASSOCIATES, INC.**

Offering full computerized  
marketing, rental & management services

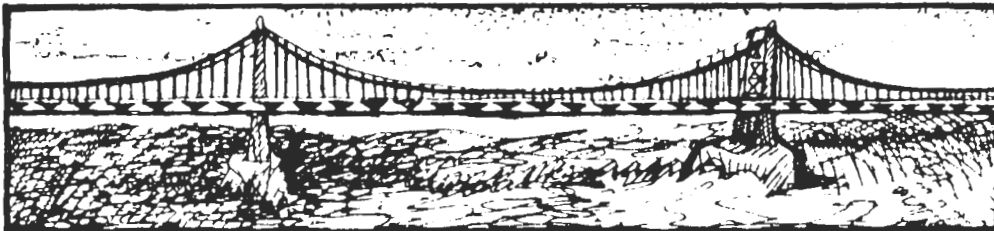
A track record of success,  
dependability & caring

Give us an opportunity to serve you.

**OSCAR I. STERN ASSOCIATES, INC.**

REALTORS

"SERVING THE CITY FROM RIVER TO RIVER FOR 75 YEARS"



RESIDENTIAL SALES • RENTALS • MANAGEMENT

**EDITH M. STERN**

**MAE BELLE WOOD**

(215) 925-6665 503 PINE STREET • PHILA. PA 19106

# SHCA 1988 FINANCIAL REPORT

	1/88 - 6/88 (6 mos.)	7/88 - 12/88 (Projected)
<b>Income</b>	4751	4700
Dues & Misc.		
Savings Acct. Interest	714	700
Grant (from City - 2/88?)	5000	
<b>Expenses</b>		
Printing	5541	5500
Newsletter Delivery	495	500
Stationery & Supplies	98	100
Secretarial Assistance (3 mos.)	135	270
Administrative Assistant (2 mos.)	1511	4500
Miscellaneous	506	500
<b>Bank Balance 7/1/88</b>		
Checking		64
Savings		28144
		11,370
		33,608
		11,370
<b>Projected Balance 12/31/88</b>		22,238

## Zoning Meetings

The SHCA Zoning Committee meets at 7 p.m. at Old Pine Community Center the third week of each month, usually on Wednesday. If you need more information, please contact zoning committee members: Steve Skale, (o) 465-2900 (h) 238-1040; Joyce Cole, (o) 569-9959, (h) 925-7103; or Wayne Weisman, (o) 636-9123, (h) 627-1828.

## A HALLOWEEN FUN EVENT

In support of Three Bear Park, a special Halloween event will be held at the Hill-Physick-Keith House, 321 S. 4th Street, on Sunday, October 30th from 3 to 4:30 p.m. Parents and children from the community are invited. There will be entertainment, refreshments, and a tour of the house museum.

## Good News Department:

### A TAX REDUCTION

Society Hill residents were surprised by the reduction in taxes for the next year, from 32% to 30.2%. (The percentage rate can be found in the right-hand corner of the notice you received.) The reason for this, according to a representative in the city's Board of Revision of Taxes, is that the annual rate is determined based on a city-wide average of assessment to market value; it is then calculated in relation to the state's Tax Equalization Board ("common level ratio"), a kind of circuit-breaker so that taxes fall within acceptable ranges. The City's annual rate is established by City Council. For example, last year's "millage" (percentage of \$1) was determined by a statistical technique (what else!) to be 7.475 or \$74.75 per \$1000 of assessment. This year, although the millage was raised to 7.865 or \$78.65 per \$1000, the state's common level ratio kept the total annual rate down.

In summary, city taxes are calculated by the following equations: Market Value X Predetermined Ratio (state's common level ratio) = Annual Real Estate Assessment. Then, Amount of Real Estate Assessment X Tax Rate = Annual Tax Rate. Got that?

----- CLIP THIS COUPON AND SAVE -----

BRUSHLESS SOFT CLOTH  
**AMOCO CAR WASH**  
**SOUTHPORT PLAZA**  
 1600 S. DELAWARE AVE. AT TASKER ST. 271-0100

**\$2**  
**OFF**

WITH THIS COUPON  
WITH GASOLINE PURCHASE

**"THE WORKS"** YOU PAY ONLY

INCLUDES:  
 BRUSHLESS CAR WASH  
 POLISH WAX & SEALER  
 EXTERIOR HAND DRIED  
 UNDERCARRIAGE WASH &  
 RUST INHIBITOR

**\$5**

WITH THIS COUPON

NOT VALID WITH OTHER DISCOUNTS - INCLUDES TAX-LIMIT ONE-EXPIRES 10/31/88

TWO DOLLARS

# HELMSLEY-GREENFIELD, INC.

## 'PRESENTS 'THE BEST OF PHILADELPHIA!'

FOR THE NEW 1988-89 SEASON!



**TOWN & COUNTRY** in Historic SOCIETY HILL Townhouse; Gorgeous Restoration including 2 STORY GLASS ATRIUM & SWIMMING POOL in 100 ft GARDEN! 5 Bedrooms; Library; Palladian Liv f/p; Formal Dining Rm! \$950,000! (\$3 Million in NYC!)



**723 RODMAN** (Cor. FRANKLIN ST): Charming - 1794 Rest. Twnhse in MINT CONDITION! Gracful 18 Stairwell & Dome - Liv f/p; Din Rm; Mod Kit; Book Lined Lib f/p; 3 Beds 2 Baths; Pan Den/Office; Cent A/C; A Very Pretty House! \$249,500!



**637 PINE:** Enter thru an Oriental Garden to a GLASS ATRIUM Art Collectors SHANGRI-LA! 30 ft hi Liv f/p; Din; Tile KIT; Mezz Den; 3 Beds/3 Baths + COMPLETE SPA FLOOR w Jap. Hot Tub/SAUNA for 6/Persian Tile Obse Shower Wine Shower! Huge Roof Deck! \$450,000!



**2210 DELANCEY:** Fitter Sq. - Unique "Art Deco" Family House w ART/LIBRARIES & Surprises Everywhere! Fabulous Artists Studio & Deck; 4/5 Beds. A Rare Opp. on Great Block! \$675,000!



**523 SPRUCE:** Older Than USA! Totally Renovated Charming 3 Bed 2 1/2 Bth COLONIAL COTTAGE w Lg Fam Rm/Entry Kit Add'n Leading to Big Gdn; Front Parlor f/p (Former Sweete Shoppe!). Din Rm; Mble Mod Bth; Cent A/C Lots of Closets, Deck - ADORABLE HOUSE in the Heart of Soc Hill - Pkg Avail! \$349,000!



**SOCIETY HILL FEDERAL:** A Magnificent, Elegantly Restored Historic Townhouse with Huge GARDENS for the Chief Executive to Entertain Royally on Every Floor: 7 f/ps - 3 Salons; Red Library; 4/5 Bedrooms; Ultra Mod Kit; Marble Dining Rm; Central A/C; But ITS BEYOND PRICE! \$1 Million!



**437 SPRUCE:** "ARCHITECTS DIGEST" on Prime Soc Hill Corner A SANTA-FE Style 4533 sq ft Knockout "Suburban House in The City!" Double Garden/Double Garage - 3 Walk-in f/ps; Liv f/p; Din; Huge Family Rm; Kitchen f/p - All Lead to Gdns; 4 Bed/3 Bth on 2nd - Off/Den; Ldry; Storage Cent A/C - EVERYTHING! \$679,500!



**1914 PANAMA:** Double Brick "Georgetown Style" 6 Bedroom Townhouse on one of Center City Philadelphia's Finest Residential Blocks! Lovely Living Room f/p; Large Kitchen & Breakfast Room & Studio; All Overlooking Walled Garden; Open Atrium Den; Library + Marble f/p; "A Country House in the City" \$695,000!

### BEST PROPERTIES

**1706 DELANCEY PLACE:** Gracious Sophisticated EURO-STYLE Ritt Sq Twnhse w/Lovely Fountain Garden; New Orleans Balcony + Elevator, Dble Draw Rm, 2 f/p; Formal Din f/p and Break Rm; 3 Beds 2 1/2 Baths OWNER MOVEO-REDUCED TO SELL! \$485,000! MAKE OFFER!

**1616 WAVERLY ST:** Wonderful Contemporary Townhouse with Garage Parking in Heart of Center City - 2 Blocks from Ritt Sq! 2 Story Living/Dining; Skylit Den; f/p Wet Bar; 3 Bds 2 1/2 Baths; Ultra Kit; Garden & Deck! \$305,000!

**511 Pine:** \$100,000 SECOND MORTGAGE @ 8% Avail for Qualified Buyer! This is your Opportunity to acquire a Historic Twnhse w Dramatic Atrium & Lg. Garden & Exposed Br Walls 5 f/ps 5 Bths in Best Soc Hill Loc! \$395,000!

**340 S. SMEDLEY:** (Betw 16th & 17th Spruce & Pine Sts) Olde World Charm on Mews St; Conv to Everything! Liv Rm; Din Rm. 3 Bdrms; 2 1/2 Baths; Lib w/fp + Pan Bkcses; lg Bright E-1 Kit w/ Breakfast Area Open to Ldspd Br. Patio Gdn; Execs HURRY! NEW PRICE! \$351,000!

**1624 WAVERLY:** Custom Built Modern Twnhse w/EVERYTHING! Garage - Big Wid Gdn; 2 Story Din Rm; Liv Rm f/p; 3 Bed; 2 1/2 Baths; Super Kit + DECK; Gt Location (OWNER TRANSFER - SELLER WILL PAY TAX DIFFERENTIAL 5 YEARS!)

**2034 ARCH:** Bright Mod Twnhse overlooking Walden Walk; Liv f/p; Din; PR; ULTRA Kit/Bar; Dramatic Master Bed Suite w Priv Kit & Deck; + 3 Bed 2 1/2 Baths; Many Xtras; 2 Car Od Pkg! \$268,500!

**2040 ARCH:** 3 Bd 2 1/2 Bth Beauty w/Open 2 Sty Dining; Custom Finish Throughout; Hdwd Firs; Romantic Master Suite; deck; 2 Car Pkg! \$258,000!

**1215 WAVERLY WALK:** WASH Sq. West; Great House! 3 Bd 2 1/2 Bth Twnhse; Cath Cells; Din Rm w/Lots of Light; Chng Gdn on Pretty Wkwy! NEW PRICE! \$227,500!

**223 HEAD HOUSE:** (Bet. 2nd & 3rd off American above Bainbridge) Space! 4 BD 2 1/2 Bth; Courtyd Contemporary; Wid Gdn. Deck, f/p High Ceilings, Master Suite, Great Storage, A/C & PKG! (FRESHLY PAINTED!) \$217,000!

**1325-29 PASSYUNK AVE:** Artist Loft Bldg; New Plumbing & Heating; Gr Living; Working Space; PKG; City Views! \$250,000!

**737 BRADFORD WALK:** (Betw 7th & 8th St. below Lombard) Enter the Chng 2 Bd/2 Bth House Thru a Lg. Breezy Gdn. LR w/fp; French Doors to Pvt Patio, New Kit. A/C, Sec System; PRISTINE COND., All Appliances Incl; WONDERFUL 1ST HOUSE! \$189,500!

**1724A BAINBRIDGE:** Coventry Court Contemporary Townhouse - Easy 2 Story, Suburban Living in the City! 2 Bds/1 1/2 Baths. Huge Living/Dining; Modern Kitchen. Laundry. Security System and Central Air-Conditioning; PLUS GARAGE PARKING—ALL for \$97,000!



**BARBARA L. GREENFIELD**  
Chairman, Residential Division  
1987 — 5 AWARD WINNER!!!!  
Phila. Board of Realtors  
1983-84-85-86 Phila. Board of  
Realtors Award Winner!

HELMSLEY-GREENFIELD continues to handle the Best Properties in the City! Big or Small. Shells — Townhouses — Condos — Investment Properties, ranging from \$35,000 to \$3 Million **BUT ONLY THE BEST!**

**WE HAVE THE TOP MILLION DOLLAR SALES GROUP ASSOCIATES IN PHILADELPHIA**

Virginia Baltzell, Lynne Giletto,  
Janice Janson, Joyce Cole, Mary Doran,  
and Dan McGowan.

Please call for information on our Portfolio of properties. We continue the Proud 80 Year Old Tradition of Service of Sellers and Buyers in Philadelphia!

### FLASH NEW LISTINGS!

**620 CHRISTIAN:** WOW! the most Exciting 2500 sq ft Bi-Level CONTEMPORARY DESIGNER LOFT in the City! Just off Soc. Hill w/Own GARAGE! 1600 sq ft Living Room f/p & Brick Walled Dining, etc. etc. + 1500 sq ft ROOF DECK POTENTIAL! 2 Beds 2 Baths; Ultra Kit; Courtyd gdn! \$295,500!

**12A RITTENHOUSE PLAZA:** 1ST TIME! 2200 sq ft. "HOUSE BEAUTIFUL!" - ENGLISH COUNTRY HOUSE IN THE SKY! Bennett Weinstock Dsgnr Magnificent Front CO-OP Overlooking Ritt Sq - Recap Yellow Drawing Rm; Qin Rm; lib/Guest Suite; Quarry Tile Family Rm/Ultra Island Kit; Mstr Suite w Sheryl Wagner Marble Bath! SIMPLY GORGEOUS! \$675,000!

**FULTON STREET: Queen Village GEM!** Beautifully Custom Finished/Gt. Cond.; 2 st. Liv f/p; Din; Mod Kit; 3 beds 2 1/2 Baths; Wonderful Double Walled Garden AND a GARAGE! Perfect for Young Family! \$210,000!

**"COMING ATTRACTION" SOC HILL - ULTRA:** Contemporary Romantic Atrium with Bridges/Decks; 4 Story Living Areas and 2 CAR PARKING! \$650,000!

**4Q TOWNHOUSE/UPPER RIVERS EDGE - 2301 CHERRY:** 1ST TIME! 4Q Townhouse Deluxe; All new Carpet; New Tile & GARAGE PARKING; 3 Beds 2 1/2 Bath Super Custom Finish w/2 Garden Decks! \$185,000!

**35A PENNS LANDING:** (Come to Office 130 Spruce-Buzz In!) 2 Bed/2 Bath SUPER DUPLEX CONDO w/Lg. Priv Japanese Gdn! Upgraded Kit + Lovely Custom Decor. PKG & Pool Facilities + Great Place to Live - Move In Cond! \$190,000!

### BEST INVESTMENTS!

**321 BAINBRIDGE: NEW!** 1st Time! - Terrific DUPLEX - 2 Super Apts - Lg. Upper w Master Bed f/p Liv. Den; Din; PR & Kit & Ground Level 1 Bed Unit; Commercial/Office Potential on "Hot" Boutique Ave.; Mint Cond. - MUST SEE \$189,500!

**1904 PINE:** 5 Terrific New Rahab Apts in Edwardian Twnhse; Live in 2 Bed Owner's Unit w/Gorg Rose Gdn - Rent out Rest - 3 Blocks Ritt Sq! \$349,500!

Helmsley-Greenfield, Inc.  
22nd Floor Centre Sq. East  
1500 Market Street  
Philadelphia, PA 19102  
(215) 569-8200

Helmsley-Greenfield, Inc.

## UNICEF TRICK-OR-TREAT

Did you know that Trick-or-Treat for UNICEF (the United Nations Children's Fund) originated in Philadelphia in 1950? This tradition of children helping children has spread throughout the country and results in the collection of millions of dollars every Halloween, exhibiting the compassion of children for those less fortunate than themselves.

The Sheraton Society Hill and Philadelphia Area Committee for UNICEF are hosting a neighborhood salute in support of the 1988 UNICEF Trick-or-Treat campaign, to be held at the hotel on Sunday afternoon, October 30, from 3 to 5 p.m.

There will be a gala reception for adults in *Spectacles*, with a pageant of fashions modeled by Philadelphia children (assisted by faculty and students from Drexel University), as well as a festive parade of costumed children. The children will be visited by a special guest — Spiderman!

Ticket prices range from \$25 to \$100 (patrons), with all proceeds going to support UNICEF projects benefiting children around the globe. For information about this special event, call 922-2265.

## VOLUNTEERS FOR THE AMERICAN CANCER SOCIETY

The Center City unit of the American Cancer Society invites you to join its core of volunteers. You can join for one short project, or become a member of one of their four committees: fundraising, patient services, public education, or public information.

Want more information? Call 665-2900.

## URBAN DESIGN AWARDS

The Foundation for Architecture presented its Award of Merit to the Episcopal Community Services for its renovation of Old St. Paul's Church on S. 3rd Street, one of five awards given in 1988 for urban design excellence.

Also receiving awards were the Benjamin Franklin Bridge lighting project, the Philadelphia Zoo, the Anti-Graffiti Network, the Office of Housing and Community Development, and the Crime Prevention Association for their West Philadelphia branch.

## AREA JOB OPPORTUNITIES

The Philadelphia Society for the Preservation of Landmarks announces the following open positions:

### HISTORIC SITE MANAGERS —

Live-in positions at two house museums in Society Hill. Couples preferred. Responsibilities include daily management of property and museum activities. Send letter and resume to: Executive Director, Landmarks Society, 321 S. 4th St., Philadelphia, PA 19106

### Trash Pickup Day Changed

If your garbage pickup is on Wednesdays, your garbage will continue to be picked up on Wednesday.

If your garbage pickup is on Friday, your garbage will be picked up on Tuesday starting October 4.

## *ARE YOU OVERWEIGHT?*

The QUEEN VILLAGE MEDICAL OFFICE, 2nd Street at Bainbridge, is pleased to announce the **MEDIFAST WEIGHT LOSS PROGRAM** is now being offered under the direction of JUDITH BRONSTEIN, MD.

This weight management program is a safe, medically supervised method of losing weight. Whether you need to lose 20 lbs, 100 lbs, or more, you owe it to yourself to learn more about this program.



*For More Information Call:*

**592-0715 or 922-4707**



*Do something good for yourself !*



(photo by Jean Brubaker)

THE PHILADELPHIA CHAMBER ENSEMBLE — Front row, left to right: Nolan Miller, horn; Christian Euler, viola; Deborah Carter, flute; Kiyoko Takeuti, piano; Julia de Pasquale, violin; William Stokking, cello. Second row: Donald Montanaro, clarinet; Luis Biava, violin; Margarita Csonka Montanaro, harp; Bernard Garfield, bassoon; Richard Woodhams, oboe.

## PHILADELPHIA CHAMBER ENSEMBLE ANNOUNCES TWELFTH SEASON SCHEDULE

The Philadelphia Chamber Ensemble will perform two series of three concerts each in its upcoming twelfth season of performing. Series A consists of three Friday evening concerts, November 18, 1988, January 20, 1989, and April 7, 1989. Series B consists of three Sunday afternoon concerts: November 20, 1988, January 22, 1989, and April 9, 1989. Tickets for each series are still available. Call Loretta Stobenau at 563-6080 for more information.

Called "uncommonly good" by the Philadelphia *Inquirer*, the Philadelphia Chamber Ensemble is composed of some of Philadelphia's finest musicians, most of whom are members of The Philadelphia Orchestra.

Since its founding in 1976, the Ensemble has performed a three-concert series each year in the intimate Victorian reading room of Washington Square's Athenaeum, where maximum seating is 200. Each performance is followed by a reception with refreshments for musicians and audience.

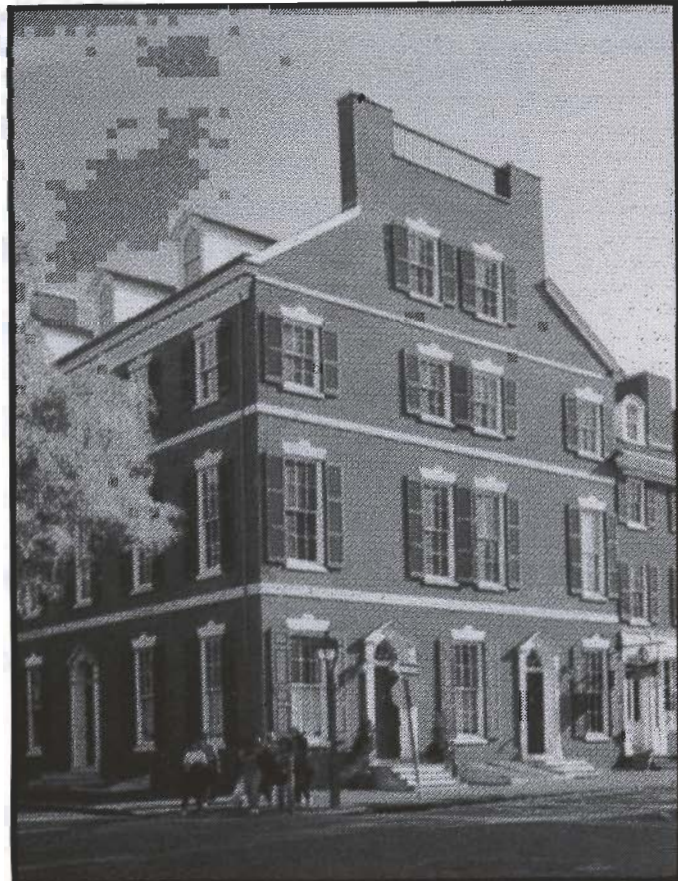
**Weichert,  
Realtors®**

**We Sell More,  
Because  
We Do More.**

Call us today to discuss  
*your* real estate needs.

**CALL 925-3144  
FOR SUPERIOR SERVICE!  
OPEN 7 DAYS A WEEK**

401 South Second Street, Philadelphia, Pa. 19147  
Southeast Corner of Second and Pine  
In Historic Head House Square



# Here's the best reason to come to Midtown.

You only get to be number one in Center City Real Estate sales by being the best. By having the best salespeople. By having the best relocation department. By having the best listings. By having the best clients. We've got it all, and it's all here for you. We know you can't be number one with part time help. So all of our salespeople are full-time professionals who live and breathe Center City real estate, all day, every day. We know that corporate executives moving here from other cities look for outstanding properties. So we created a relocation department that has national recognition. We know that the most desirable listings come because people know that you make sales happen. So we developed the most effective advertising and promotion techniques in town. So good that they are being copied by our competitors. When you get to be best, you get the best clients. That's what we like most about being number one. So come to Midtown. Come to the best. After all, you deserve it, don't you?

**m**  
**Midtown**  
**realty corporation**

1700 Walnut Street  
Philadelphia, PA 19103 215 546-0550

## Episcopal Diocese Moves Headquarters to Society Hill

The Episcopal Diocese of Pennsylvania has purchased the Mutual Assurance's property at 4th and Locust Streets for its new headquarters. The diocese had been renting office space at 17th and Market Streets since moving from its old Church House on Rittenhouse Square to make way for Jack Wolgin's high-rise development in 1972, now called "The Rittenhouse."

Bishop Allen L. Bartlett has said that the new location in Society Hill is expressive of the working relationship with Episcopal community services in Old Paul's Church on 3rd Street, and the Seaman's Church Institute at 3rd and Arch Streets. It is also consistent with episcopal origins — four blocks from Christ Church and two blocks from St. Peter's. Bishop Bartlett describes the move as a "commitment to metropolitan ministry."

Settlement is expected in May and the move should take place next fall. The property includes the Shippen-Wistar House (1750) on the corner; the Cadwalader House (1826), adjacent on 4th Street; and the lot across 4th Street, which was the site of the house where Louis Philippe, King of France (1796-1801) lived after the French Revolution. The Green Tree insurance company has had its offices there since 1912, and will move to larger quarters at the corner of 4th and Walnut Streets.

## DESPERATELY SEEKING . . .

You've heard this lament before — we need editorial and advertising managerial help for the *Newsletter*.

This issue of the *Newsletter* is late because the unthinkable happened — two editors were ill over the summer and if that was not enough, they had travel plans that did not jibe.

We need two more people who can write and are willing to share the responsibility of assigning articles, photos, and art work, coordinating the material on schedule, and working with the production staff. Organizational and writing ability are necessary, but we can train interested volunteers in the mechanics — we know them all too well!

We have no advertising managers for the next issue, and we are desperately seeking two volunteers to share the task of phoning and following up our faithful advertisers. This requires about 20 hours per issue (four per year). The manager of an issue of the *Newsletter* must be available to receive material from the advertisers and have it in order for the printer in a timely fashion. The system is in place, thanks to the dedication of our former advertising manager, Laurette Scherneck, but we need two SHCA members to carry on.

Please call Fluffy Palmer, the SHCA's administrator at 928-1313, if you want to be part of a major contribution to your community. No perks — except that good feeling one gets from being part of a worthwhile project!

# DARTS AND LAURELS

**Dart**—to the Philadelphia Streets Dept. for permitting a deep depression to grow in spite of many telephone calls, at the north-east corner of 5th and Spruce Streets.

**Laurel**—to the Gas Works who promptly checked the depression for gas fumes — and placed an orange ~~witch's~~ hat in the hole!

**Laurel**—to John F. Collins, A.S.L.A. (American Society of Landscape Architects) who gave his time to the community for Three Bear Park.

**Dart**—to all those residents who watch a street tree slowly die because they do not trim away the suckers at its base.

**Laurel**—to the local Super Fresh for finally cleaning up its property.

**Laurel**—to stalwart residents who survived the record-breaking summer and kept good cheer, sweeping the streets of sand left by the cable construction.

**Laurel**—to Steve Skale and Joyce Cole, co-chairpersons of the SHCA zoning committee for their professional administration of the numerous zoning matters brought before the SHCA.

**Laurel**—to Sergeant Robert McCarthy of the South Street Detail for his consistent support and unfailing good humor.

**Dart**—to residents who fail to pick up beer bottles and paper debris near their properties, often left after weekends of heavy pedestrian traffic and South Street revelers.

**Staff for this issue** — Charles Bangert, Sally Buell, Ruth Dugan, Nancy Frenze, Bernice Hamel, Ad Kelly and Tim Martin.

**Contributors to this issue** — Libby Browne.

**Business Staff** — Bernice Hamel, Rosemarie Scarpulla and Betty Steele.

Deadline for articles and ads for the December issue is November 10th.

Articles may be delivered to staff members or mailed to *The Resident Newsletter*, Box #3, Philadelphia, PA 19105.

For advertising rates and information, contact Rosemarie Scarpulla, 925-3003 or Bernice Hamel, 925-4363.

## JOIN US

Tear off and mail to:

Society Hill Civic Association  
P.O. Box 3  
Philadelphia, PA 19105  
attention: Norm Wallin, Treasurer

Please enter my (our) membership in the Association.

Name \_\_\_\_\_

Address \_\_\_\_\_

Phone \_\_\_\_\_

Check one:

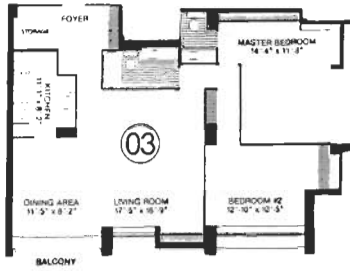
\_\_\_\_\_ 1 person \$12.50 \_\_\_\_\_ 2 persons same address \$25.00

\_\_\_\_\_ I request a waiver of dues.

# Allan Domb Real Estate Presents Prime Condominiums for Sale

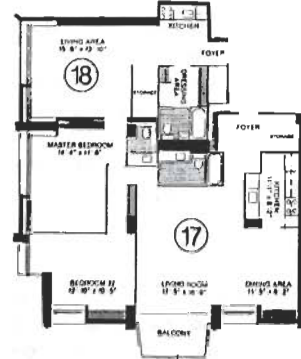
## Hopkinson House

604-36 South Washington Square



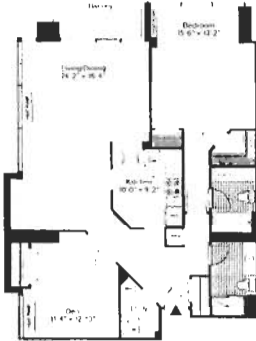
**2 bedrooms,  
1½ bath,  
southeast corner  
\$159,500**

**3 bedroom, high floor,  
southwest view  
\$229,900**



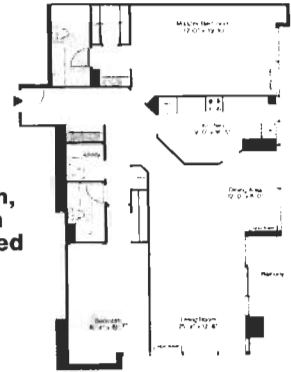
## INDEPENDENCE PLACE

6th and Locust Walk



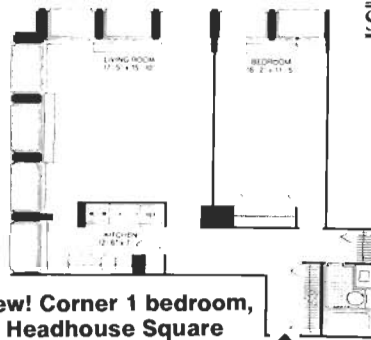
**Two bedroom,  
two full bathrooms,  
bright southeast corner  
\$149,900**

**2 bedroom, 2 bath,  
corner, southern  
exposure, upgraded  
\$229,900**



## SOCIETY HILL TOWERS

200-220 Locust Street



**New! Corner 1 bedroom,  
Headhouse Square  
& sunset views  
\$99,900**

**North Tower, bridge &  
city views  
\$169,900**

**West Tower, upgraded  
kitchen & baths, river  
view  
\$189,900**



Other Units Also Available

For More Information, Call:



**ALLAN DOMB REAL ESTATE**

Philadelphia's Largest Luxury Condominium Realtor®

**215-545-1500**

1608 Walnut Street • Suite 1303 • Philadelphia, PA 19103