



SOCIETY HILL CIVIC ASSOCIATION

THE RESIDENT NEWSLETTER

Box 3, Philadelphia, Pennsylvania 19105

September, 1989

Parking Lot Dispute Now In Superior Court

Lawyers for both sides in the appeal to dissolve the July injunction of Judge Victor J. DiNubile, Jr. against installing an open-air parking lot on Abbotts Square property will be heard in Superior Court on September 14.

For those unfamiliar with the saga, a suit was brought by several community organizations, including SHCA, seeking an injunction against the proposed parking lot on the basis that it would create a nuisance of increased traffic, air pollution and noise. Since the proposed facility is located adjacent to a registered historic district and to St. Peter's School, it would pose a threat to school children, as well as diminish the aesthetics of the area and property values.

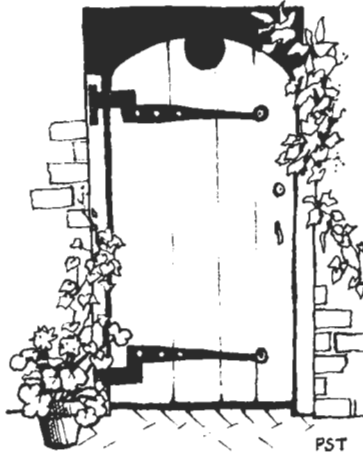
In an interim decision by Superior Court Judge Montemuro on July 18, the lot owner's request for a \$35,000 bond was reduced to \$5,000. This smaller bond has been posted by the St. Peter's School Parking Lot Fund. Additional court costs are expected to reach as high as \$30,000. Up to this point, a remarkable team of lawyers worked on the behalf of our communities without remuneration. We cannot thank these selfless attorneys enough — Robert J. LaRocca, Thomas R. Kline, Arthur M. Kaplan, and William J. Cluck — nor can we forget the enormous help of neighbors and, particularly, Councilman James Tayoun who supported our cause.

The appeal continues in Superior Court on Thursday, September 14 at 901 Chestnut Street, Room #3, 2nd floor. The

court convenes at 9:30 am. Attorneys for each side will be given fifteen minutes to discuss their previously submitted briefs and to use two or three minutes of that time in rebuttal. Courtroom #3 is very large, and your presence would be appreciated.

The \$5,000 bond was posted by the St. Peter's School Parking Lot Fund, the single repository for all monies collected in the struggle against the proposed parking lot. In order to meet additional legal expenses, the fund is planning several events: A neighborhood/family dinner party and auction will be held on Tuesday evening, September 12 at St. Peter's School. Watch for further details and please plan to attend.

Your contribution to the fight may be sent to Caroline E. Seamans, St. Peter's School, 319 Lombard Street, Philadelphia, PA 19147. Checks should be made out to the St. Peter's School Parking Lot Fund. Please be generous. We need your support!



More NewMarket Goodbyes

If you have just returned from your summer vacation, you may be surprised to see that two additional businesses in New Market have closed their doors.

Head House Tavern, at the corner of 2nd and Pine Streets, was a popular restaurant frequented by many visitors to our historic neighborhood. The tavern was one of NewMarket's oldest tenants — since NewMarket's development in the sixties — and had become almost a "historic" site itself. But NewMarket's owners would not renew the lease to Head House Tavern's proprietors, and the restaurant was forced to close within a five-day period in July. The property is now vacant.

Vacant also is the large corner property, **The Back Porch Cafe**, at the corner of 2nd and Stammers Streets. This was a struggling new restaurant with a menu that appealed to many neighbors, as well as tourists. With last spring's closing of the video store on that block, our community has lost too many services.

P.S. **Ross House**, the large historic property on the other side of Head House at 2nd and Pine remains vacant and its future is still unclear.

No Room at the Curb

Last June's tornado struck our community in an ironic blow when the NewMarket garage collapsed. Since that fateful natural event, the sign "Temporarily Closed" has left many Society Hill residents with monthly parking contracts stranded. Rebuilding of the structure seems to be going at a snail's pace. In addition, the Penn's Landing Square garage, which ordinarily provides parking spaces for its occupants, is undergoing renovation, and many residents of that condo complex are now parking, legitimately, on Society Hill streets. Having a parking sticker now doesn't mean necessarily that residents can find a legal spot, because this is the season when we welcome many visitors to our area. So forget about going out on Friday or Saturday evening. You won't be able to put your car back to bed until 2 am!

MARK YOUR CALENDARS!

All SHCA board and general membership meetings are held on the third Wednesday of every month at Old Pine Community Center, 4th and Lombard Streets. The next general membership meeting will be held on September 20 at 8 pm, with welcome to newcomers and refreshments at 7:30 pm. The board meeting at 6:30 pm precedes the general membership meeting. Board meetings for the rest of this year are scheduled for October 18 and November 15 at 8 pm.

A Message from the President

Thirtysomething

and still growing, still vibrant, and still dynamic. Society Hill's renaissance is showing signs of age, but change is not always bad. It offers us the opportunity to mobilize another group of visionary pioneers who can reflect and respond to these conditions. The SHCA agenda for the year ahead is dedicated to positive change.

Many projects are in the works. The Penns Landing development is underway, and the I-95 ramp design will be completed, with construction to begin soon. The designation of Society Hill as a City historic district should be finalized at long last.

Meanwhile, we continue to monitor existing and emerging problems:

NewMarket and Head House Square:

At one time the hub of our neighborhood, the entire area is undergoing transition and is fast becoming a ghost town. A comprehensive strategy will be required to forestall further deterioration of this central and historic ground in Society Hill.

Abbotts Square: The appeal opposing the parking lot progresses. Please see the latest news on this issue, page one.

Jefferson Incinerator: The community is negotiating an agreement with Jefferson Hospital on a waste management system to prevent pollution from their proposed incinerator.

Zoning: Zoning issues will demand our attention and initiative, as the PSFS Building at Washington Square remains undeveloped; as the structures at 6th and Addison Streets are only partially built; and as bars, clubs and restaurants continue to want to locate in our residential neighborhood.

Neighborhood Maintenance: Society Hill's infrastructure is over thirty years old

and in great need of reconstructive surgery: (1) Repair of our historic Franklin street lamps remains a priority; (2) We have sponsored a "Friends" group for Starr Garden and Three Bear Park to work toward improving the playgrounds and parks for our children; (3) The cleaning up of our neighborhood is a renewed goal. Our Maintenance Committee will continue its vigil, removing graffiti and illegal posters, as well as keeping us informed of other trouble spots. Our Clean-Up Day will be revived, and we will look for new methods to make our neighborhood the showplace that it once was and could be again.

City Cooperation: Our civic association continues to work with City officials: The South Street corridor will be the focus of study and problem-solving through the Managing Director's South Street Task Force. Also, in an effort to keep our streets clean, we will continue to work together with the City to support the dumpster bill and SWEEP program.

I believe that Society Hill is a special neighborhood, and it requires hard work plus much determination to keep it that way. Along with Vice President Steve Skale, the entire Board of this Civic Association, the Committee Chairs, and our able Administrator, Fluffy Palmer, I am dedicated to making that effort. We are committed to working with our elected city and state representatives and in joining with our neighboring community organizations on areas of mutual concern. We need *your* help.

What can you do?

You can make a difference! Become a member of SHCA.

Your dues keep you informed of our activities by helping support this newsletter and other flyers and notices. Your dues help cover the cost of Clean-Up Day and our first ever, part-time and invaluable administrator. Numbers do count! In the past, our membership has reached a high of over 1000 neighbors; now we are down to only 500. (The membership coupon is on page 15).

Come to our quarterly General Membership meetings (look for the special flyers). Write to us (PO Box 3, Philadelphia, PA 19105) or call us (Fluffy Palmer at 928-1313 or me at 627-4910). Let us know of your concerns. Join one of our committees (Maintenance, Zoning, Liquor and Licenses, Parks and Playgrounds, Membership).

I look forward to representing you in the year ahead and to a challenging time in the life and development of our community.

Rebecca Stoloff



(P) Rebecca Stoloff

Becky has been a Center City resident for 26 years, the last 16 in Society Hill. Involved with SHCA for the last eight years, she was on the Zoning Committee, quadrant director, vice president and now holds the position of president. She works with her husband, Milton, in management consulting.

MEET OUR



(NW) Joel Chernock

Joel Chernock has been a Society Hill property owner since 1970. His wife, Susan Dictor, was a SHCA quadrant director for several years. Their family includes two daughters, Elyssa and Sarina. Joel works for the school district of Philadelphia as a lead teacher in the Get Set Day Care Program. At the present time, upgrading and improving neighborhood playgrounds is important to the Chernock-Dictor family.



(SE) Elliot Fields

Elliot Fields and his wife, Peggy, have been Society Hill residents since 1972 when they purchased one of the last remaining houses on their block needing renovation. They are parents of a daughter. Elliot has a law degree from Villanova and is in the tire retreading business in New Jersey.

In This Issue

SHCA DIRECTORY OF BOARD
& OFFICERS

ABBOTTS SQUARE PARKING
LOT UPDATE

ST. PETER'S SCHOOL & OLD
PINE COMMUNITY CENTER

HELLOS & GOODBYES

THE MARINES ARE COMING . . .



(VP) Stephen Skale

Steve is not new to community involvement. He is the current Vice President of SHCA and has served as a director and co-chair of the Zoning Committee. He is a Democratic Committee Person for the Fifth Ward. Steve practices law with the firm of Cavaliere and Skale and lives in Society Hill with his wife, Linda, and two sons, Joseph and Jonathan.



(T) Morton C. Lieberman

Morton is a retired businessman who owned his own wholesale seafood company in the Food Distribution Center. He has been treasurer of the Washington Square East Condo #1 and has served for three years as a quadrant director on the SHCA board. This year he is serving as treasurer.



(S) Joy Lindy

Joy, a commercial model, has lived on Delancey Street since 1975. Joy has been a member of the SHCA board on and off for 11 years and is currently the TV & Movie liaison for SHCA. She was a founding member of Town Watch and was active in the drive for resident permit parking.

OFFICERS AND QUADRANT DIRECTORS

(photos by Fluffy Palmer)



(NW) Sidney Hack (Photo by Bernie Cleff)

Sidney and his wife, Anita, live at Independence Place. After retiring from business in 1979, Sidney attended Adelphi University in New York, where he received a B.A. in natural sciences. Since moving to Philadelphia in 1986, he has volunteered as a counselor to SCORE (Small Business Admin.), as a coordinator of the Washington Sq. Assn., and as a volunteer in the Maritime Museum library. Sidney and Anita have two grown children and four grandchildren.



(SE) Joan Johnson

Joan, an assistant professor at Community College of Philadelphia, has lived on Stammers Street since 1973. She is the president of the Lombard Park Corp., the group of neighbors which own the "green space" in the 200 block of Lombard Street. She was actively involved in the fight to stop the Sports Bar and, more recently involved in the action against the Abbotts Square parking lot.



(NE) Lorna Katz Lawson

Lorna rejoins the SHCA board after an absence of one year. In the past she was active on the Zoning Committee and she is again focusing her attention on zoning issues. A resident of Society Hill since 1973, Lorna has also served on the landscape committee for the Society Hill Towers Owners Association. She is an architect in practice with her husband, John, in Center City.



(NE) Julie Jacobs

Julie returned to Philadelphia five years ago after a 20-year absence. She has a B.S. Ed. from Miami University and an M.S. in counseling. She is an instructor at Penn State University in the Department of Human Development and Family Studies. Julie and her husband, Walter, have three children and one grandchild. She is also active with Big Sisters of Philadelphia.



(Town Watch) Hillary LaViolette

Hillary is the Town Watch liaison to SHCA and serves on the Membership Committee. A native of Trinidad and Tobago, she has been a Society Hill resident for 14 years. She was a founding member of Society Hill Town Watch and is past president of that organization. She works as an employee benefits consultant and is interested in promoting better international relations.



(SW) Elizabeth H. Ostrander

Elizabeth is beginning her seventh term on the SHCA board. She is a freelance grants consultant, an elder at Old Pine Presbyterian Church, a founder and board member of the Philadelphia Committee for the Homeless and of TownePride Works, Inc. She is also currently serving on the board of CHOICE and of "Saturday for Seniors" at Old Pine. Liz and her husband, Dick, have lived in Society Hill for 18 years. They have two grown children and five grandchildren.

(More on following page)

SCHA Board Directory:

Becky Stoloff (P) 234 Spruce Street,
627-4910 (h)
Steve Skale (VP) 533 Pine Street,
465-2900 (w), 238-1040 (h)
Mort Lieberman (T) 17 St. James Court,
922-5034 (h)
Joy Lindy (S) 124 Delancey St.,
922-4042 (h)



(SE) Fred Ottaviano

Fred has been a Society Hill home owner since 1967. He is a manager for a Philadelphia-based international engineering and design company. Fred is serving his second year on the SHCA board. He and his wife, Pierrette, have two children. He considers himself a neighborhood activist on issues that affect the quality of life in Society Hill. Fred also represents a portion of Society Hill as an elected committee person of the Fifth Ward, Second Division.



(SW) Ann R. Spector

Ann is a psychologist in private practice in Center City. She has lived in Society Hill for five years with her husband, Larry, and two daughters, Elizabeth and Jennifer. Ann is a leading member of the "Friends Group" working to improve conditions at the Starr Garden playground and Three Bear Park. She is also concerned about the conditions on South Street and seeing that the leash law and "clean up after your dog" laws are strictly enforced.

NORTHEAST QUADRANT

Lorna Katz Lawson, 20 B 200 Locust St.,
Society Hill Towers
351-0560 (w), 922-1386 (h)
George Scarpulla, 240 S. 3rd Street,
925-3003 (h)
Julie Jacobs, 247 St. Joseph's Way,
923-1748 (h)

NORTHWEST QUADRANT

Joel Chernock, 719 Spruce Street,
625-9852 (h)
Sidney Hack, Independence Place
Tower 2-1409,
925-3438 (h)
Lynn Wiksten, 527 Spruce Street,
923-5474 (h)

SOUTHWEST QUADRANT

Liz Ostrander, 408 S. 6th Street,
732-9754 (w), 625-4849 (h)
Sally Smith, 535 Pine Street,
922-5180 (h)
Ann Spector, 410 S. 6th Street
546-5928 (w), 928-1928 (h)



(NE) George Scarpulla

George is one of the original pioneers of Society Hill's development, having faithfully restored several historic houses. His community involvement includes service on the Zoning Committee of SHCA and VP of an earlier neighborhood organization, known as the Society Hill Association of Property Owners. He is a member of the Building/Maintenance Committee of Old St. Joseph's Church. George is a recently retired engineer who lives with his wife, Rosemarie, here on S. 3rd Street.



(NW) Lynn Wiksten

Lynn has been a resident of Society Hill for over four years. She has been active in the Society Hill House and Garden tour sponsored by the Friends of Independence Park. In addition, she is a member of the Women's Committee of the University Museum of the University of Pennsylvania.

SOUTHEAST QUADRANT

Elliot Fields, 123 Pine Street,
609 779-0281 (w), 922-2207 (h)
Fred Ottaviano, 341 S. 4th Street,
422-3806 (w), 925-2544 (h)
Joan Johnson, 230 Stampers Street,
751-8396 (w), 923-7586 (h)

HIGH RISE REPRESENTATIVES

Hopkinson House 602 Washington Square So.
Rosemary Fluehr,
985-1400 (w), 925-6986 (h)

Independence Place, 241 S. 6th Street

Helen Comstock, #2 Independ. Pl.,
Apt. 202, 6th & Locust Walk,
925-6882

Society Hill Towers,

Roger Thanhauser, 200 Locust Street
(609) 235-3511 (w), 922-7896 (h)
Alexis Berg Marmar, 27 B North Tower,
988-5007 (w), 928-0322 (h)

TOWN WATCH REPRESENTATIVE

Hillary LaViolette, Society Hill Towers,- #2-H
523-7527 (w), 928-1354 (h)

IMMEDIATE PAST PRESIDENT

Aaron Jay Beyer, 632 Spruce Street,
299-2030 (w), 925-4288 (h)



(SW) Sally Smith

Sally has been a SHCA member for ten years and has served as a quadrant director previously. She and her husband, Arthur, are long-term residents of the area. Sally is a registered nurse and the mother of two small children. She volunteers for Philadelphia Open House, the City Gardens Contest and the Pennsylvania Hospital Auxiliary. Her areas of community interest include playground improvements, cleaner streets, promotion of SHCA membership, safety and zoning matters.

(Past President) Aaron Beyer

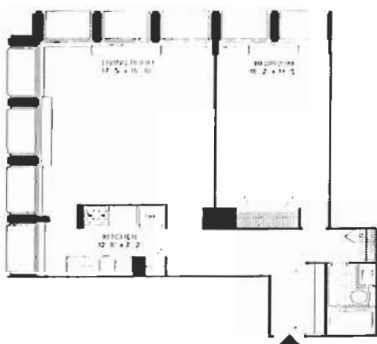
Aaron and his wife, Fran, have been residents of Society Hill since 1977, where they live with their young son, Jared. A partner with the Philadelphia law firm of Fox, Rothschild, O'Brien and Frankel, Aaron is a past president, vice-president, and board member of SHCA. He has worked as a block captain and with Town Watch. Previously he was a member of the Georgetown, D.C. Civic Association.

(Highrise representatives on page 6)

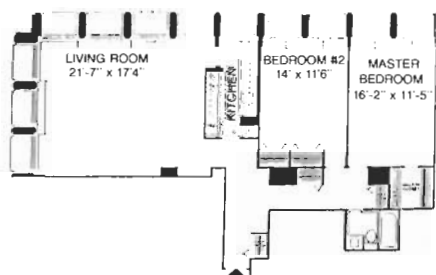
WE ARE NOT A CLUB!
SO WHY JOIN SHCA?
NOT

Allan Domb Real Estate Presents Prime Condominiums Now Available for Sale

SOCIETY HILL TOWERS



Unit: CORNER
1 BEDROOM
1 BATH
CITY VIEW
 Sale Price: \$109,900
 Unit: CORNER
1 BEDROOM
1 BATH
HIGH FLOOR
SOUTH WEST
EXPOSURE
 Sale Price: \$109,900



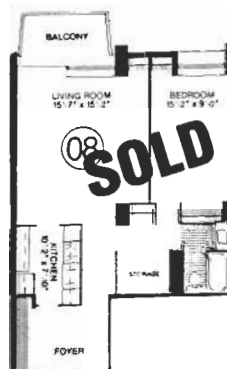
Unit: 2 BEDROOM 1 BATH, SOUTH WEST CORNER
 Sale Price: \$149,900

Now Available for Rent

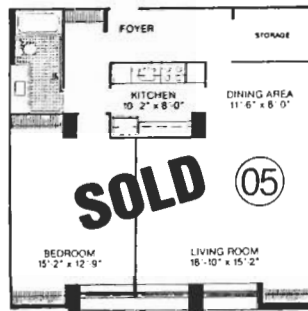
CORNER 1 BEDROOM,
 HEAD HOUSE VIEW \$775
 1 BEDROOM, 1 BATH, BRIDGE VIEW \$735
 2 BEDROOM, 1 BATH,
 FULL RIVER VIEW \$1200



Hopkinson House



Unit: 1 BEDROOM
1 BATH
SOUTH VIEW
WITH BALCONY
 Sale Price: \$89,900



Unit: DELUXE 1 BEDROOM
1 BATH
OVER 1,000
SQUARE FEET
 Sale Price: \$94,900

Now Available for Rent

STUDIO, SUNSET VIEW \$560
 1 BEDROOM, 1 BATH WITH BALCONY \$750
 DELUXE 1 BEDROOM, 1 BATH,
 OVER 1,000 SQUARE FEET \$925



ALLAN DOMB REAL ESTATE

Philadelphia's Largest Luxury Condominium Realtor®

215-545-1500

1608 Walnut Street • Suite 1303 • Philadelphia, PA 19103

HIGHRISE REPRESENTATIVES



(Society Hill Towers) Alexis Berg Marmar

Alexis is serving as Co-Liaison (with Roger Thanhauser) as Society Hill Towers representatives to the SHCA. Alexis has lived with her family in Society Hill for 16 years and has served on the Towers Condominium Council for five years. Currently she is vice-president of the Towers Council, having served previously as secretary. Her other volunteer efforts are devoted to the Society Hill Synagogue. Alexis is an attorney, employed as associate general counsel with the Colonial Penn Group.

(Society Hill Towers) Roger Thanhauser

Roger, a native Philadelphian, has been a resident of the Society Hill Towers since 1977 where he lives with his three daughters and his wife, Nula. Roger, who holds an MBA from Columbia, is the President of Fidelipac Corporation. Roger served for six years as a Council member of the Society Hill Towers Owners Association, was treasurer of that organization and currently holds the office of president. He has also served as treasurer of SHCA for several years.



(Independence Place) Helen Comstock

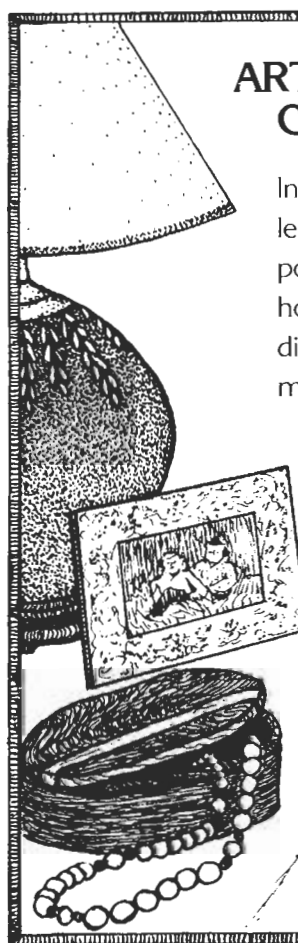
Helen and her daughter have been living in Society Hill for the last two years. A Philadelphia area native, Helen believes that our streets and parks should be safe for walking and aesthetically pleasant. She is interested in seeing that our streets are clean of litter and trash, and is also concerned about where the trash goes when we dispose of it. Helen is the Executive Director of the Alzheimer's Association of Greater Philadelphia. She is a widow whose two grown sons live in Washington, D.C.



(Hopkinson House) Rosemary Fluehr

Rosemary, a graduate of Temple University, has lived in the Hopkinson House for five years and is its representative to the SHCA. She is employed as a real estate broker for Midtown Realty and is the 1989 president of the Center City Council for the Philadelphia Board of Realtors. Rosemary is a tennis player, a member of the Society Hill Club and serves on the committee for the Washington Square Association.

PLEASE JOIN OUR EFFORTS!



ARTISANS COOPERATIVE

Invites you to see our new collection of handmade quilts, pottery, jewelry, toys, and home accessories. These traditional crafts are American made and can be seen in our Philadelphia shop (New Market, 419 S. 2nd St. 928-1532).

Receive a 10% discount with this ad.

Hours:
Mon. - Sat., 11-6
Sunday, 12-5

NEED HELP?

Society Hill resident,
Eager to work, part time,
Conscientious,
Resourceful,
Experienced,
Typing, Speedwriting.....
And waiting for a
Ring from
You! -- Call 925-8193



Secretary/Gal Friday
for family, professional,
or small business.

Jean Pomeroy

SPECIAL COMMITTEES

BY LAWS

Wayne Weisman, 210 Locust St., 2-F,
636-9123 (w), 627-1818 (h)

CARRIAGES

Fred Ottaviano, 341 S. 4th Street,
422-3406 (w), 925-2544 (h)

CLEAN-UP DAYS

Liz Ostrander, 408 S. 6th Street,
922-6179 (w), 922-0895 (h)

HISTORICAL CERTIFICATION

Myrna Field Baum, 1 Blackwell Place,
545-7477 (w), 238-9550 (h)

I-95

Lorna Katz Lawson, 200 Locust St., #20B,
351-0560 (w), 922-0155 (h)

JEFFERSON HOSPITAL INCINERATOR

Bernard Hamel, 302 S. 2nd Street,
925-4363 (h)

Marvin Nadel, 531 Cypress Street,
238-1733 (h)

PARKS AND PLAYGROUNDS

Ann Spector, 410 S. 6th Street,
546-5928 (w), 928-1928 (h)

Jerry Feinstein, 308 Cypress Street,
732-0311 (w), 574-9039 (h)

SOUTH STREET TASK FORCE

Becky Stoloff, 234 Spruce Street,
627-4918 (h)

Steve Skale, 533 Pine Street,
465-2900 (w), 238-1040 (h)

TOWN WATCH

Hillary LaViolette, 200 Locust Street,
928-1354 (h)

TV & MOVIE PRODUCTION LIAISON

Joy Lindy, 124 Delancey Street,
922-4042 (h)

WASHINGTON SQUARE LIAISON

Sidney Hack, Independence Place,
Tower 2, #1409
925-3438 (h)

ONGOING COMMITTEES

LIQUOR CONTROL BOARD/L&I

Elliot Fields, 123 Pine Street,
779-0281 (w), 922-2207 (h)
Myrna Field Baum, 2 Blackwell Place,
545-7477 (w), 238-9550 (h)

MEMBERSHIP

Lynn Wiksten, 527 Spruce Street,
923-5474 (h)
Joan Johnson, 230 Stampers Street,
751-8396 (w), 923-7586 (h)

NEIGHBORHOOD MAINTENANCE

Harris Nadley, 325 S. 3rd Street,
925-4282 (h)
Don McNeil, 421 S. Perth Street,
636-9123 (w), 627-1828 (h)

ZONING

Lorna Katz Lawson, 200 Locust St. #20B,
351-0560 (w), 922-0155 (h)

NEWSLETTER

Ruth Dugan, 238 S. 3rd Street,
922-3195 (h)
Nancy Frenze, 532 Manning Walk,
923-5459 (h)
Bernice Hamel, 302 S. 2nd Street,
925-4363 (h)

ADVERTISING

Sherrill Joyner, 266 St. Joseph's Way,
625-0267 (h)

New Rector at St. Peter's

St. Peter's Church has called the Rev. Wendel William Meyer as its new rector, and he has recently arrived in Philadelphia.

Tad Meyer (as he is known) is forty years old. He was born in Evanston, Illinois, was graduated in 1971 from the University of The South, received an M.Div. *cum laude* in 1978 and an S.T.M. in 1980 from the General Theological Seminary. He completed his formal education with a Ph.D. in Church History from Cambridge University, England in 1986.

To come to St. Peter's, Tad left his post as Senior Canon at St. Paul's Cathedral, Buffalo, New York. Prior to that he assisted at St. Mary's Church, Cambridge, England, and before that was Curate and Associate Rector at Christ Church, New Haven, Connecticut. He also taught English and history at the secondary school level. At various times he has been active in diocesan and community groups relating to the mentally handicapped, hunger, the homeless, housing for the elderly, continuing education of clergy.

Tad's wife, Jerrilyn, is a midwife by profession. They will be living in Queen Village and look forward to getting to know all their neighbors.

SHCA Board Supports Police Drug Education Program

The board of this association has given its blessing to an initiative supporting an anti-drug community education program. The program, called "Citizens Foundation to Support the 6th District," is intended to expand drug awareness in schools. As an initial effort, the Foundation is soliciting

advertisements from businesses and community organizations to appear in a Business Directory. All proceeds will be dedicated to funding community programs in the 6th District. The SHCA will be taking out a one-quarter page ad for this effort.

PAUL HERTEL & CO., INC.

Established 1908

Insurance

AUTO
RETAIL
MARINE
AIRCRAFT
PERPETUAL
HOMEOWNERS
PROFESSIONAL
CONDOMINIUMS
MANUFACTURERS

N.E. Cor. 3rd & Chestnut Sts.
Philadelphia, PA 19106
Telephone: WA 5-7656

Music lovers choose David Mann Audio
for courteous, sound advice and
professional service, with an unsurpassed
reputation for value and integrity.

OPEN
EVENINGS
AND SATURDAY

VISA
MASTERCARD
AMERICAN EXPRESS

DAVID MANN AUDIO

NewMarket • N.E. Corner 2nd & Lombard St. • Philadelphia

922-3000

CANTON • ALLISON • BANG & OLUFSEN • B&W

ADS • NAD • NAKAMICHI • YAMAHA • REVOK



Our name says it all.
An exclusive staff in an exclusive neighborhood.
Exclusively!



For the very best in Sales, Rentals and Service.

Activities For Everybody At Old Pine Community Center

The Old Pine Community Center at 4th and Lombard Streets, a participant of the United Way, is a nonprofit neighborhood recreation facility that has organized athletics and social activities for youth and adults.

The entire family can take advantage of Old Pine's various activities. For children, there is a Nursery School, Toddler, and Afterschool Program. Girl Scouts, Boy Scouts, Brownies, Cub Scouts, and a Basketball league (ages 8-13) meet here, as well. The Center has a library program, with an outstanding collection of books for children ages 1-12. All of the children in the community are eligible to join the library, with their parents' permission. Library cards are free, and four books may be borrowed every week.

For adults there are Jazzercise classes, basketball and volleyball leagues, Weight Watchers meetings and a "Saturday For Seniors" Program.

Old Pine is open most nights, with space available for meetings, classes, sports, parties, etc. The fees charged are based on actual operating costs. If you are planning an event and would like to consider renting space, or if you have any questions regarding the Fall 1989 calendar, as listed below, please feel free to call the Center at 627-2493.

CHILDREN'S CALENDAR

Boy Scouts	Mondays	6:30-7:30 pm
Girl Scouts	Tuesdays	7:00-8:00 pm
Brownies	Mondays	6:30-7:30 pm
Cub Scouts	Mondays	7:00-9:00 pm
Basketball league	(for children ages 8-13) from Nov. thru March	

The Nursery School Program begins on September 13. The Afterschool Program for public and private school students starts on September 6.

ADULT CALENDAR

SHCA Meetings	3rd Wed. every month	(Check times)
Volleyball League	Mondays	6:30-10:30 pm
Weight Watchers	Thursday	6:30-8:30 pm
Amulis	Thursday	6:00-8:00 pm
Self Defense		

We Lose A Friend

Irene Spak, who served this neighborhood from her tailor shop for almost four decades, died in July after a short illness. Many of us didn't even know her name, but that didn't matter — because she didn't know ours either. Though she was our friend, who would on a day's notice, hem a skirt, mend trousers, or repair our clothes as she often repaired our spirits, it was an unusual relationship that never required formal introductions.

Her door on Spruce Street was usually unlocked and often open. Some of us just dropped our clothes off to be cleaned behind the sign that said "Tailor Shop — Dry Cleaning". She never operated her business in the customary way of giving tickets when clothes items were brought in. What always amazed us was her ability to match our faces with our possessions. In fact, some of us were apprehensive when we first began our acquaintance with Irene. How could we drop off our best suit for dry cleaning when she would not even issue us a ticket? "Don't worry, she'd say, "I know who you are." Her wonderful memory always produced the correct garment.

Irene was a unique person and rare neighbor. For those of us who never suspected, she was a Holocaust survivor whose life

had been filled with sorrow. Raised in Eastern Europe, she met and married Joseph Spak in Philadelphia after the war, although they had been raised in the same village and had spent time at the same concentration camp. Their daughter, Ann Spak Thal, died in her early twenties, and the Society Hill Synagogue named its Hebrew School in her honor. Then, three years ago, her husband and business partner, Joe, died of a heart attack.

Irene's warm friendliness and boundless energy was always at the service of her customers. Whatever will we do without the advice she gave us as she let out tucks and replaced zippers? Irene Spak's life enriched all who knew her. This community sends its condolences to her sons Barry and Bruce.

Rehab for Street Lamps

Thanks to Councilman James Tayoun, some money has been allocated for the rehabilitation of our Franklin Lamps. This action comes just in time, as we have lost at least three more lamps to accidents and vandalism during this summer.

The Maintenance Committee of SHCA is working with the City Streets Department to plan for the efficient and thorough restoration of these lamps. We expect to see significant improvements before the end of 1989.

ALTERKNITS
510 S 5TH ST - 627-7365

MCHUGH 6-85

"FRESH & AFFORDABLE WOMEN'S FASHIONS"

St. Peter's School Plays An Active Role In the Community

If you were at the Abbots Square lot on April 7, you saw the eighth grade of St. Peter's School picketing the parking lot. If you attended the court proceedings, you saw the eighth grade of St. Peter's School sitting in the jury box for several days. The involvement of their school, at 3rd and Lombard Streets, in this controversy has been a powerful civics lesson for these young people. It was just one of many ways the students are involved in their community and one of many ways the community is getting to know the school.

Grades one through eight at St. Peter's each participate in a stewardship project throughout the school year. They collect and bag food every Monday for the Food Cupboard at St. Peter's Church. They serve lunch for the "Saturday for Seniors" at Old Pine Community Center. They bake goodies for the "Coffee Cup" on 10th Street. They make sandwiches at the Society Hill Synagogue to be served to the homeless at Old St. Joseph's. They collect old clothes and linens for the women and children at Mercy Hospice. And they collect trash: one spring day, 21 fourth graders left school, each armed with rubber gloves and a box of trash bags. Traveling over 3rd Street to Bainbridge Park, into Bella Vista and back over 6th Street, they filled every one of those trash bags inside an hour. Their indignation prompted letters to the Mayor, suggesting ways to keep our streets clean.

As the children are learning about the people and the problems that surround them, the community is getting to know St. Peter's, its people and its facilities. Caroline Seamans, Head of the School, spearheaded the opposition to the Abbots Square parking lot. The Community College of Philadelphia has held classes in the school twice a week for the last four years — an ideal after-hours use for a school.

The School's role in Society Hill goes back to its founding in 1834 by Bishop White. With the rebirth of Society Hill, St. Peter's was in an excellent position to provide schooling for families moving into the area. Since the arrival of Caroline Seamans as Head in 1967 and since its becoming independent of St. Peter's Church in 1969, the school has flourished. In the early 1970's, it helped establish the Old Pine Community Center which, to this day, it supports with half of the Center's operating budget in return for day-time use of the gym and Wasson Hall.

Historic Preservation Conference Comes to Philadelphia

The National Trust for Historic Preservation will hold its 43rd National Preservation Conference here in Philadelphia from October 11 through 15. The sponsor for the conference is the Philadelphia Historic Preservation Corporation. PHPC has the most successful facade easement program in the country, protecting more than 100 buildings in the Philadelphia area — specifically twenty in Society Hill. The national housing issue, with its special problems and opportunities will be the focus and theme of this year's conference. Over 40 educational sessions are being offered covering a wide variety of topics, some of which will be held at the historical sites being discussed.

Conference headquarters will be the Wyndham Franklin Plaza Hotel. Requests

for more information and registration can be directed to the National Trust for Historic Preservation, 1785 Massachusetts Avenue, N.W., Washington, DC, 20036. (202) 673-4092. Or, you can call the office of the Preservation Coalition of Greater Philadelphia at 568-4210.

One of the special events for this year's program, "Look Homeward, America," is a Candlelight Tour of Society Hill, scheduled for Friday evening, October 13 between 8 and 11 pm, with refreshments to be served at the Powel House and the Hill-Physick-Keith House. **NOTE:** Our civic association is promoting a mini-Clean-Up Day in preparation for the 3,000 expected visitors of the Society Hill tours. Please do **what you** can to make your home and street sparkle for this occasion!

While many of the 215 boys and girls live within walking distance of the school, nearly half come from other parts of the city and region. From the smallest three-year-olds to the graduating 14-year-olds, the children are taught respect for themselves, others and for their natural and civic environments. It is a powerful experience for them to

become active in this community and we gratefully acknowledge the benefits to our community from the presence of St. Peter's School.

The 1873 building may have a forbidding exterior, but inside it is bright and cheerful. Do stop in for a visit!



YOU ARE INVITED TO JOIN US
FOR SERVICES AT
SOCIETY HILL SYNAGOGUE

WE ARE AN INNOVATIVE,
UNAFFILIATED CONSERVATIVE
CONGREGATION OFFERING
STIMULATING SHABBAT SERVICES,
THE ANN SPAK THAL HEBREW AND
SUNDAY SCHOOLS, A PLAYSCHOOL
PROGRAM, SOCIAL AND CULTURAL
TOGETHER WITH EDUCATIONAL
PROGRAMS.

SOCIETY HILL SYNAGOGUE
418 Spruce Street
Phila., Penna. 19106

for more information 922-6590

Rabbi Ivan Caine
Cantor Alan Cohn
Evelyn Segal, Administrator

Here's the best reason to come to Midtown.

You only get to be number one in Center City Real Estate sales by being the best. By having the best salespeople. By having the best relocation department. By having the best listings. By having the best clients. We've got it all, and it's all here for you. We know you can't be number one with part time help. So all of our salespeople are full-time professionals who live and breathe Center City real estate, all day, every day. We know that corporate executives moving here from other cities look for outstanding properties. So we created a relocation department that has national recognition. We know that the most desirable listings come because people know that you make sales happen. So we developed the

most effective advertising and promotion techniques in town. So good that they are being copied by our competitors. When you get to be best, you get the best clients. That's what we like most about being number one. So come to Midtown. Come to the best. After all, you deserve it, don't you?

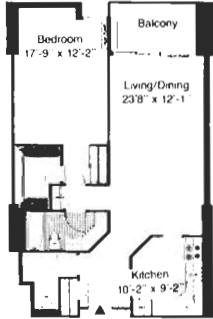
m
Midtown
realty corporation

1700 Walnut Street
Philadelphia, PA 19103 215 546-0550

INDEPENDENCE PLACE

6th & Locust Walk

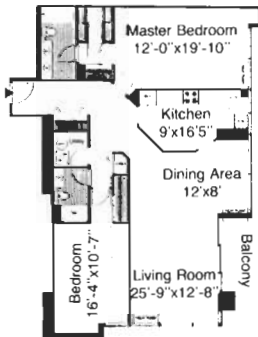
NOW AVAILABLE FOR SALE



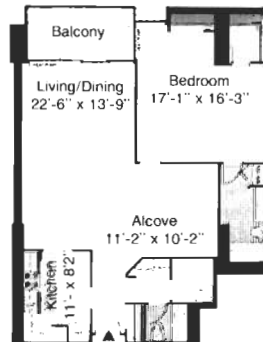
Unit: 1 BEDROOM,
SOUTH VIEW
Sale Price: \$117,500
Unit: 1 BEDROOM,
SOUTH VIEW
SOLD
HIGH FLOOR
Sale Price: \$129,900



Unit: 1 BEDROOM/DEN
2 BATH
WITH BALCONY
SOUTH EAST CORNER
Sale Price: \$159,900



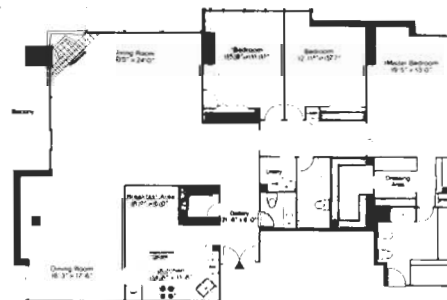
Unit: 2 BEDROOM 2 BATH
WITH BALCONY
SOUTH WEST CORNER
Sale Price: \$215,000
Unit: 2 BEDROOM 2 BATH
HIGHLY UPGRADED
Sale Price: \$375,000



Unit: 1 BEDROOM DELUXE
1 1/2 BATH
WITH BALCONY
SOUTH VIEW
Sale Price: \$154,900
Unit: 1 BEDROOM DELUXE
1 1/2 BATH
WITH BALCONY
HIGH FLOOR
Sale Price: \$164,900



Unit: 2 BEDROOM, DEN,
2 BATH
UPGRADED
LARGE BALCONY
SOUTH VIEW
Sale Price: \$339,000



Unit: PENTHOUSE, UNOBSTRUCTED SOUTH EAST
CORNER RIVERVIEW; HIGHLY UPGRADED
Sale Price: \$675,000



ALLAN DOMB REAL ESTATE

Philadelphia's Largest Luxury Condominium Realtor®

215-545-1500

1608 Walnut Street • Suite 1303 • Philadelphia, PA 19103

City Tavern



**Fine Food & Spirits
Private Dining Rooms**

Second St. near Walnut
Philadelphia, PA 19106

Reservations
923-6059

The Marines and that Pesky Corner

To U.S. Marines — past and present — the name “Tun Tavern” is sacred. It was the place where the Corps was organized in 1775 at Front and Chestnut Streets in Philadelphia, now a part of I-95. In 1970 representatives of the Marine Corps Memorial Foundation appeared before the board of SHCA to present their plans to build a facsimile of the tavern on a parcel of land at the corner of Spruce and Mattis Streets. The board had serious reservations about the proposal and stated its position at a meeting of the SHCA membership in April, 1971 where a motion that the parcel be maintained as open space for public recreation passed unanimously.

In December of 1975 SHCA learned that City Council decided that public recreation included building “historic” buildings and leased the land to the Memorial Foundation for 50 years at \$1 per annum. Anticipating what Mayor Green’s commissioner of public property, Joseph W. Brown, was to say later, “No one wants to get into a hassle with the Marines,” SHCA voted to approve the proposal, with the stipulation that the Marines would maintain the plot.

The cost of the project had increased from the original \$200,000 to an estimated

\$350,000, an amount that proved enough only to dig a hole, discover an underground stream at the site, and build a foundation. With no money to continue, the Marines withdrew and the city eventually filled in the excavation and promised to make the corner a part of the I-95 cover park. Off and on, new groups of Marine veterans came forward with plans to revive the project, but the site has remained a weedy eyesore.

In 1984 a new group focused upon the empty lot. With the backing of our (then) councilman Lee Beloff, the Chapel of the Four Chaplains got an ordinance passed through City Council leasing *them* the land under the same conditions. Did this mean that two parties held overlapping leases? Or had the Marines forfeited their lease? It doesn’t really matter, because that deal fell through too.

At the present time the little lot appears as though construction of Tun Tavern is finally taking place. The construction mess, however, is actually being made by contractors working on renovations to the garage at Penn’s Landing Square.

And the Marines are back again appealing to SHCA to back their proposal to reconstruct Tun Tavern. This time the enlisted men are in charge, and they say they’ll get the job done. They estimate it will cost \$3,500,000. It wouldn’t be that expensive to clean up the lot and make it presentable. Our neighborhood deserves a guarantee from the Marines that whatever happens to their Tun Tavern project, they will be responsible for the appearance of this lot.

Your child can do better in school. We guarantee it.

Let Sylvan improve your child’s learning skills dramatically. Call today for a free, no obligation consultation.

The Sylvan Guarantee

When enrolled in our basic reading or math program, your child will improve at least one full grade equivalent score after the first 36 hours of instruction, or we will provide up to 12 additional hours of instruction at no further cost.

Measurement will be based on a nationally normed achievement test for improvement in either reading (comprehension or vocabulary) or math (computation or application).



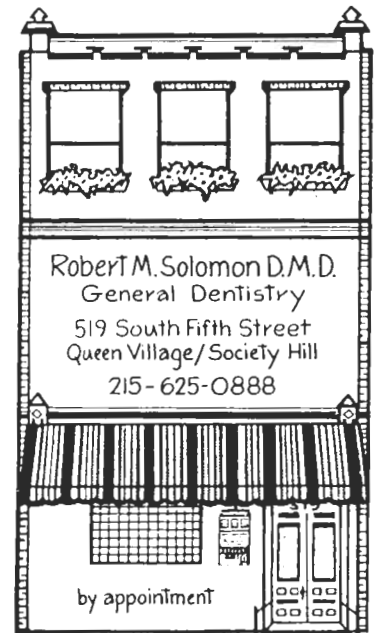
Sylvan Learning Center®

The Curtis Center, Suite 170
7th & Walnut Streets
Philadelphia, PA 19106

Helping kids do better.™

(215) 238-8380 ©1989 Sylvan Learning Corporation

Reading. Math. College Prep/SAT . Study Skills.



Robert M. Solomon D.M.D.
General Dentistry
519 South Fifth Street
Queen Village/Society Hill
215-625-0888

by appointment

IT'S NOT EASY BEING GREEN

As a result of the tornado last spring and several other storms over the summer, Society Hill has suffered a lot of tree damage, and in some cases trees have to be replaced. As we know, trees not only add beauty to the city landscape and value to your homes, but also absorb carbon dioxide and produce oxygen in their daily living process. In fact, according to a *Philadelphia Inquirer* editorial on December 26, 1988, trees are very important in offsetting the greenhouse effect. Philadelphia Green, a private, non-profit organization started by the Pennsylvania Horticultural Society, offers the following two avenues to acquiring a "street tree" for your house:

The Do-It Yourself Approach

Here are the basic steps involved in planting your own street tree. There's a lot of work involved, but you'll be able to save yourself between \$200-\$400 in labor costs.

1. Own the property where the tree is to be planted.
2. File for a permit with the Fairmount Park Commission.
3. Have site inspected by FPC arborist.
4. If approved, have utilities marked on the sidewalk. **BEFORE YOU DIG, CALL 1-800-242-1776.**
5. Get a healthy, vigorous tree. (2-2½" diameter).
6. Cut a 3'x3' square in the sidewalk. You can rent a "cut-off" saw to do the job.
7. Break up & remove concrete.
8. Dig out the pit about 3' deep.
9. Set tree to proper depth.
10. Backfill with original soil.
11. Water generously.
12. Mulch with woodchips.
13. Stake securely.
14. Wrap & wire tree.



If You Want A City Tree

1. Be the property owner of the house or land where the future tree will sit.
2. Sign a planting permission slip available from your Fairmount Park district arborist and send it to Memorial Hall, Phila., PA 19131. Call 686-0016 for the list of arborists.
3. The street tree inspector from Fairmount Park will inspect your property and determine if a tree can go in front of your property. Then and only then can you plant a tree yourself or have your name added to the city's future planting lists.
4. If you want the city to plant your tree, contact your City Councilperson to find out if funding has been allocated for your councilmanic district.
5. Sit around and wait for a long time — or, see #6.
6. You can hire a qualified tree contractor. The contractor will acquire a city permit for this work. Your signature is required to validate the official permit. A list of

approved street tree contractors can be obtained by calling the Fairmount Park Commission's Street Tree Division at 686-0016. To qualify, a contractor must furnish an insurance certificate with adequate coverage as well as pass inspection by the Street Tree office.

NUMBERS TO CALL

Tree Request	686-0016
Approved Contractors	686-0016
Damaged Trees	686-0016
Permit Request	686-0016
Utilities (CATHY)	1-800-242-1776
Tree Care Info (PHS Hotline)	922-8043
Nurseries (see suburban PA & NJ Yellow Pages)	

For more information on Philadelphia Green, they are located at 325 Walnut Street. Phone: 625-8280.



Dena Robbins Judith Cills
"THE GALLOPING GRANDMOTHERS"

Q: WHAT DO THE "GALLOPING GRANDMOTHERS" DO?

A: All those things you would do yourself ...if you had the time. Whether it's buying gifts, food or cars, whether it's doing library research or taking the dog to the vet, we try to do things exactly as you would. We'll find it, we'll do it or we'll wait for it...and if we can't, we'll find the best person for the job and make sure it gets done right.

Corporate and Executive Personal Services
Monthly billing

ROBBINS CILLS ASSOCIATES, INC.
923-5800



CLASSIC • COMFORT'S
FINE LINENS • GIFTS • UNUSUAL ACCESSORIES

516 SOUTH THIRD STREET
PHILADELPHIA, PA 19147 215-440-0311

Society Hill Realty — Society Hill Exclusively

108 Pine Street



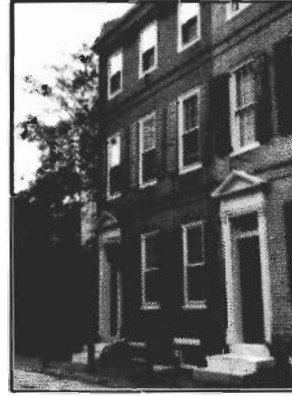
A charming historic home built in 1760 by John Goodwin. The living room has a fireplace and French doors opening onto a beautiful garden. The master suite fills the entire second floor. There is a den with fireplace, two more bedrooms on the third floor. Hardwood floors throughout, security system and reserved parking.

LOT SIZE:
20 x 102

PRICE:
\$625,000



304 Cypress Street



A delightful historic home with a custom contemporary interior located on a small, quiet street steps from Delancey Park. The eat-in kitchen has a quarry tile floor and a brickpaved patio off it. There are three bedrooms, 2 baths and den, all beautifully maintained and in perfect condition.

LOT SIZE:
21.5 x 50

PRICE:
\$485,000



240 Locust Street



A contemporary Lou Sauer home in a "10" location. Large, gracious spaces flow easily together. The second floor has a glorious master suite and a second bedroom and bath. The lower level is now a den, and can be anything you want. There is an elevator and two car deeded parking.

LOT SIZE:
24 x 60

PRICE:
\$550,000



270 St. Joseph's Way



A very elegant, beautifully appointed home that I.M. PEI himself would be proud of. Located in Society Hill's loveliest courtyard setting. Gracious spiral staircase with skylight above adds more drama. High ceilings, lots of light, and all in absolutely perfect condition. Fabulous for a professional couple or empty nesters.

LOT SIZE:
19 x 55

PRICE:
\$395,000



MEMBER CCMLB • OPEN DAILY 8:30-6 SATURDAYS & SUNDAYS 10-2
(EXCEPT JULY & AUGUST)

206 SOUTH THIRD STREET • PHILADELPHIA, PENNSYLVANIA • 19106 • 215 • 574 • 9430

UPDATES:

Billiard Parlor

Thanks, but no thanks — was the ultimate response David Brenner got after his presentation last spring when he proposed to open an upscale billiard parlor at the 2nd and Walnut Street location which had previously housed City Bites. Although some people seemed intrigued by the idea of an expensive billiard hall in our area, neighbors who would be most impacted by it (residents of Society Hill Towers) were unfriendly to the idea. Their opinion prevailed, and the City Bites location was nixed. Then Mr. Brenner took his idea elsewhere, and The Society Hill Sheraton seemed to be the next alternative site on his list. Most recent reports, however, indicate that the hotel has also been tabled as a location, and it now seems that Society Hill will have to do without a fancy billiard parlor!

Another Restaurant

The City Bites site was followed by a Spanish restaurant (Si!) and will soon be the home of another eating establishment — this time, a “Mongolian” style Chinese restaurant, scheduled to open in the fall. *Bon appetit!*

CHAMBER ENSEMBLE ANNOUNCES 13TH SEASON

The Philadelphia Chamber Ensemble has announced an eclectic program of music and an exciting change of venue for its 13th season. The Ensemble, which has always performed in Society Hill, will move to the Old Pine Street Church, at 4th and Pine Streets, while their usual home, Washington Square’s Athenaeum, is being renovated. Old Pine Street Church has excellent acoustics and has been the site of many other Society Hill musical events.

The Ensemble is composed of some of Philadelphia’s finest musicians, including many members of the Philadelphia Orchestra. Society Hill residents who are Ensemble members are Donald and Margarita Montanaro, who play the clarinet and the harp, and Sidney Curtiss who plays the viola.

The first concerts of the season will be performed on Friday, October 27 at 8 pm and Sunday, October 28 at 3 pm. Tickets are available for \$20 at the door on the day of each concert. A limited number of season tickets is still available. For three concerts, either Friday evening or Sunday afternoons, the season rate is \$35.

Please direct your questions or order your tickets by calling Dr. Cynthia Eiseman at 923-5492. Or, contact Rosemarie Fabien at 732-2177.

DARTS AND LAURELS

Laurel—to all neighbors who have replanted new trees after the June tornado wreaked havoc on streets.

Dart—to some neighbors who continue to dump their household trash in street and sidewalk trash barrels.

Laurel—to SEPTA for responding to neighbors’ complaints about safety and pollution damage to the historic Man of Trouble Tavern. SEPTA’s #42 buses no longer pollute the air with diesel fumes by idling at the corner of Spruce and 2nd Streets. Nor do they block visibility to oncoming traffic. They now wait for passengers around the corner on Mattis Street.

Staff for this issue — Ruth Dugan, Nancy Frenze, Bernice Hamel, Ad Kelly, Sherrill Joyner, and Carolyn Mooney.

Business staff — Sherrill Joyner and Arlene Weissman.

Illustration, page 1 — Pamela Todd

Contributor — Libby Browne

Deadline for the December issue is November 1.

Contributions and Letters To The Editors may be delivered to staff members or mailed to *The Resident Newsletter*, Box #3, Philadelphia, PA 19105.

For advertising rates and information, please contact Sherrill Joyner at 625-0267.

**WE ARE NOT A CLUB!
SO WHY JOIN SHCA?**

BECAUSE CARING FOR OUR NEIGHBORHOOD IS THE SAME AS CARING FOR OURSELVES. BECAUSE WE ARE NEIGHBORS AND NEIGHBORS HELP EACH OTHER. BECAUSE YOUR SUPPORT WILL MAKE A DIFFERENCE. YOUR HOME IS YOUR PRIMARY INVESTMENT. PROTECT IT!

SHCA is entirely a volunteer organization, comprised of Society Hill residents and organizations (schools, churches and synagogues, businesses) whose members have one common interest — a heartfelt desire to maintain the high quality of life we have established here. The Association represents all who live and work within our boundaries (between Front and 8th Streets and Walnut and Lombard Streets). It is incumbent upon **all of us** to preserve this unique neighborhood.

PLEASE JOIN OUR EFFORTS!

Society Hill Civic Association
P.O. Box 3
Philadelphia, PA 19105

Tear off and mail to:

attention: Morton Lieberman, Treasurer

- New Member Membership Renewal

Name _____

Address _____

Zip _____ Phone (day) _____ Phone (eve) _____

Single \$12.50 _____ Corporate \$50.00 _____

Household \$25.00 _____ Corporate Sponsor \$100.00 _____

I (We) would be interested in working with the following committees:

- | | |
|--------------------------------|-----------------|
| _____ Membership | Other Interests |
| _____ Neighborhood Maintenance | _____ |
| _____ Newsletter | _____ |
| _____ Liquor Control | _____ |
| _____ Town Watch | _____ |
| _____ Zoning | _____ |
| _____ Special Projects | _____ |

Please make checks payable to Society Hill Civic Association.