

SOCIETY HILL CIVIC ASSOCIATION  
**THE RESIDENT NEWSLETTER**

Box 3, Philadelphia, Pennsylvania 19105

June, 1990

### Historic District Designation For Society Hill Progresses

You may be wondering why you have not heard any news recently about the Society Hill Historic District nomination pending before the Philadelphia Historical Commission. As you probably know, for the past five years the Society Hill Civic Association has been working very hard to have Society Hill named as a Philadelphia Historic District. Society Hill has already been recognized nationally as an Historic District on the National Register of Historic Places. This recognition, however, does not provide the protection against incompatible alterations to buildings that is afforded by local historic designation. Once Society Hill becomes a Philadelphia Historic District, any proposed alterations must meet design standards intended to maintain the unique character of the neighborhood. In addition, applications for demolition permits for any building in the district would have to be approved by the Historical Commission.

Although the Society Hill nomination has been pending before the Historical Commission for quite some time, the most recent delay was due to the Commission's taking time out to write historic preservation regulations which would spell out procedures to be used by the City in administering the preservation ordinance. At long last, the Commission approved the regulations at its April 18, 1990 meeting, and they will go into effect following a 30-day public comment period. The Commission will resume public hearings on the Rittenhouse and Fidler Squares nomination early this summer, and the Society Hill nomination is next

*(Continued on Page 10)*

### Moving Right Along . . .

## I-95 RAMP CONSTRUCTION BEGINS

The final phase of Center City I-95 construction is scheduled for completion in July 1991 when the ramp construction and Walnut Street Pedestrian Cover phase, described below, is finally accomplished.

#### What Will Be Taking Place

Construction has begun as follows:

- **Market Street on-ramp to I-95 South** with access also provided from Front Street.

- **Pedestrian Bridge from Front and Walnut Streets over the existing lanes of I-95 and to the east side of Delaware Avenue.** This bridge/cover, approximately 50 feet wide, has been designed to tie-in directly with Penn's Landing. It will be extensively landscaped so as to enhance the visual attractiveness of the neighborhood. We can also look forward to new lighting at several locations along the waterfront, herringbone pattern brick paving, and the replacement of chainlink fence with iron pic-

ket railing. Sound walls, one with cast stone graphic relief panels, will screen portions of the highway and ramps from neighboring houses.

- **Two new ramps from Delaware Avenue to I-95 North and from I-95 South to Delaware Avenue.** The ramps have been designed to go under a relocated section of I-95 and are known as the "Double Slide Under."

- Upgrading and opening of **Morris Street on-ramp to I-95 South** with access from Delaware Avenue.

- Combining of existing Tasker Street off-ramp from I-95 North and a proposed Queen Street off-ramp into **one combined off-ramp from I-95 North onto Delaware Avenue between Reed Street and Washington Avenue.** Tasker Street off-ramp will be removed.

#### How This Construction Affects Us

There will be traffic inconveniences during this year-long construction period, but the communities involved achieved an important concession with PennDot and the City in that: **none of the I-95 ramps will be opened until the Vine Street Expressway (I-676) connection is finished and open to all traffic.**

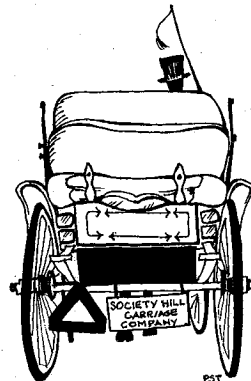
Two lanes of traffic in each direction, with shoulders on the right-hand lanes, will be maintained through the construction area most of the time. There will be no "cattle chutes" as the Schuylkill Expressway project had.

**The following traffic restrictions will be in effect from now until July 1991:**

- Southbound traffic will merge from three lanes to two around the Ben Franklin Bridge and continue as two lanes to just north of Washington Avenue.

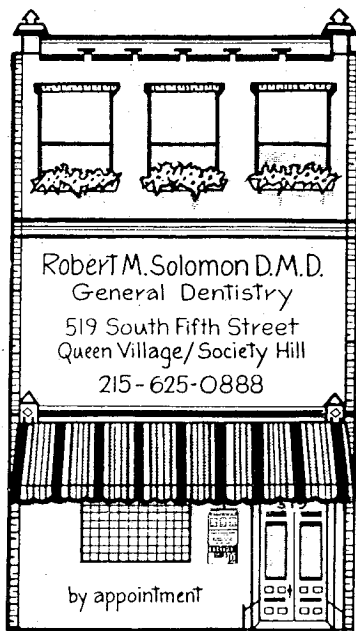
- Northbound traffic will merge from three lanes to two just past Oregon Avenue

*(Continued on Page 11)*



## MARK YOUR CALENDARS!

The Resident Newsletter's new publication dates are March, June, October and December. Look here in the October issue for the time, date and agenda of the October General Membership Meeting.



Robert M. Solomon D.M.D.  
General Dentistry  
519 South Fifth Street  
Queen Village/Society Hill  
215-625-0888

by appointment

## TRANSFORMER SITE EVOKES PROTEST



Daily Kiddie Gridlock At Transformer Pad Site

(Photo by Dan Barol)

## WANTED

### MARBLE MANTEL

or

### Marble Mantel Surround

Call 923-3714  
after 6:00 pm or on  
weekends.

## Mashugana..?

MAD HATTER, GARDEN PATCH,  
MAJESTIC, VEDGY WEDGY ...  
PLUS COLD PLATTERS

OMELETTES AND  
DELI-LAND SANDWICHES.

NITELY DINNER SPECIALS  
DISCOUNTED —  
BETWEEN 4-6 PM

BEER  
FROM AROUND THE WORLD  
Where Else?

**DELI-LAND**  
318 S. 5th St.  
627-1001

Society Hill Synagogue obtained a permit from L & I to erect a pad for a new PECO transformer in order to provide service for air conditioning equipment. However, the permit was issued erroneously, since the placement of the pad in front of the historic facade violates the zoning code. A meeting was convened at the site with synagogue representatives, the Historical Commission, PECO, the SHCA Zoning Committee, and concerned neighbors. Suggestions to relocate the transformer to the rear of the property and/or to the basement of the synagogue were discussed. The location preferred by the Historical Commission is the basement of the synagogue, while the synagogue prefers the most cost-effective location next to the walkway at Lawrence Court, on the east side of the building.

\*\*\*\*\*

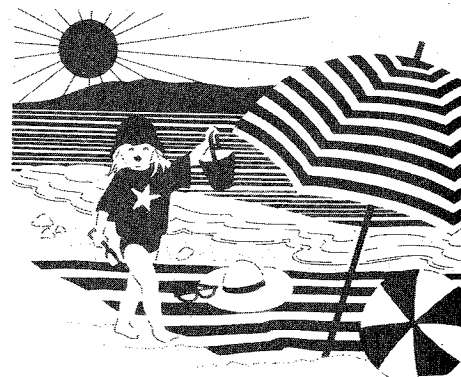
**The new telephone number of the SHCA office is 629-1288.** The office staff of the SHCA is available for calls and inquiries Monday through Friday mornings 9:30 to 12:30. Please leave your message on the tape and your call will be returned.

\*\*\*\*\*

**Reminder:** It is a policy of the Society Hill Civic Association not to respond to anonymous letters. All letters must be signed in order for SHCA to take any action requested, and will be held in strict confidence by the association.

The objection of neighbors, however, was based on the potential danger of an explosion posed by the oil-filled transformer, since children frequent the walkway for a play area, and use it as a means of entering and leaving the synagogue's nursery school. It is likely, therefore, that if the Historical Commission approves the relocation of the transformer to another outdoor location, the neighbors will continue to oppose it as a safety risk.

**UPDATE:** As we went to press, it was reported that PECO will now allow the synagogue to locate the transformer underground which will eliminate a possible eyesore to the historic facade.



**ANOTHER CHANCE TO  
"S.A.V.E." YOUR CAR**

The last S.A.V.E. car registration at McCall School will be held June 16, 1990 between the hours of 11 am and 2 pm.

Project S.A.V.E. (Stolen Auto Verification Effort) has been designed to cut down on auto theft and vandalism. A bright yellow S.A.V.E. decal affixed to the rear side window gives the police permission to stop your car if it is being driven between midnight and 6 am. If the driver is unable to produce proof of ownership or proof of owner's permission to drive the car, the driver will be taken to the nearest police district and the car owner will be contacted.

This program is gaining support throughout the country, and in areas where it has been in effect for some time a substantial decrease in auto theft has resulted.

If you want to participate, bring your car(s), your PA owner's registration and \$2.00 per car to McCall School at 6th and Delancey Sts. on Saturday, June 16, between 11 and 2. If you miss the June 16 McCall registration, you may register your car(s) directly at the Sixth Police District headquarters. Call Project S.A.V.E. at 686-3063 for details.



\*\*\*

If anyone out there has an unused paper cutter that you would be willing to donate to the Society Hill Civic Association, please call the SHCA office.

\*\*\*

**PRESERVATION  
PLAN ON IT**

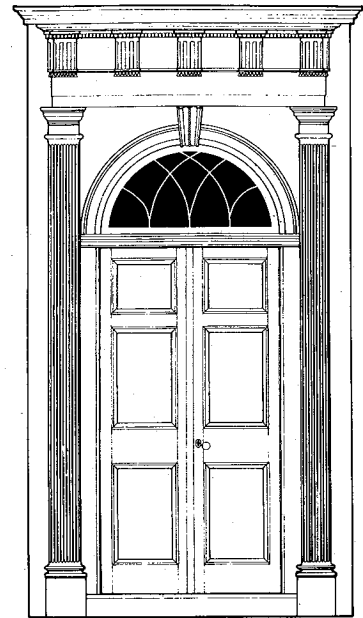
Planning on restoring a house, saving a landmark, reviving your neighborhood?

Gain a wealth of experience and help preserve our historic and architectural heritage. Join the National Trust for Historic Preservation.

Make preservation a blueprint for the future.

Write:

National Trust for Historic Preservation  
Department PA  
1785 Massachusetts Ave., N.W.  
Washington, D.C. 20036



**Antiques &  
Collectibles Fair**  
in historic Washington Square

**6th & Walnut  
Society Hill, Philadelphia  
Saturday, June 16  
10 A.M.-5 P.M.**

**MORE THAN 50 DEALERS**

**PLUS**

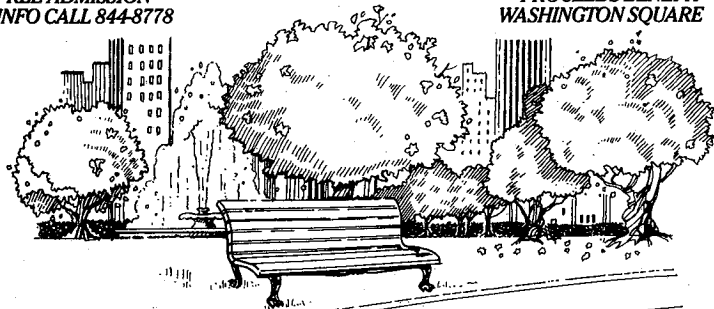
**"A TASTE OF SOCIETY HILL RESTAURANTS"**

**SAME DAY RAIN SITE:**

**CURTIS CENTER ATRIUM  
6<sup>TH</sup> STREET BETWEEN WALNUT AND SANSOM**

**FREE ADMISSION  
INFO CALL 844-8778**

**PROCEEDS BENEFIT  
WASHINGTON SQUARE**



**SPONSORED BY THE WASHINGTON SQUARE ASSOCIATION**

**PERELMAN TOY MUSEUM  
FOR SALE — AGAIN!**

The owners of Abercrombie House, located at 266-70 S. 2nd Street have withdrawn their zoning application for commercial use of the property. Their intention was to rent the building for retail sales of decorative items, such as antique toys, furniture, and American Indian artifacts. The applicants' request came before the City Zoning Board of Adjustment on March 28, 1990, at which time many Society Hill neighbors attended to protest the proposal, although at that session only the applicants' testimony was taken. Another zoning hearing was scheduled for April 11th and then rescheduled for an unspecified time. During this period, the owners withdrew their request for the variance.

The community opposed retail activity at this property on the basis that a precedent is set when a variance for commercial use is granted in a residential neighborhood. The united effort of nearby neighbors resulted ultimately in the owners' withdrawal of their proposal. Special thanks to all caring and involved community members, including many residents of Society Hill Towers who appeared at the hearing in March. This wonderful building is again for sale as a single-family residence or museum.

**ST. PETER'S SCHOOL NAMES NEW HEAD**

David K. Murray of Charlottesville, Virginia was recently appointed head of St. Peter's School, at 3rd and Lombard Streets. He succeeds Caroline Seamans, who is retiring after serving the school for 23 years.

Murray's experience spans nearly 15 years and includes service as the director of a lower school in Charlottesville and college counselor in Stevenson, Maryland. A native of Syracuse, New York, Murray graduated from Amherst College in 1972 and earned his master's degree in educational psychology at the University of Virginia in 1989. He and his wife Libbi and their daughter Katie are very excited about coming to Philadelphia and look forward to living in the area.



DAVID K. MURRAY

\*\*\*\*\*

**THE BEST**  
**GRAND**  
soft & lite  
**GLORIOUS**  
**ONE STOP**

Pre-Trip Trip  
Gadgets  
Baggage & Bags  
Gifts  
Travel Shop

Accessories for Discriminating Travelers  
**TRAVEL-WISE**

P.O. Box 30260 • 103 South 18th Street • Philadelphia, PA 19103 • (215) 563-7001

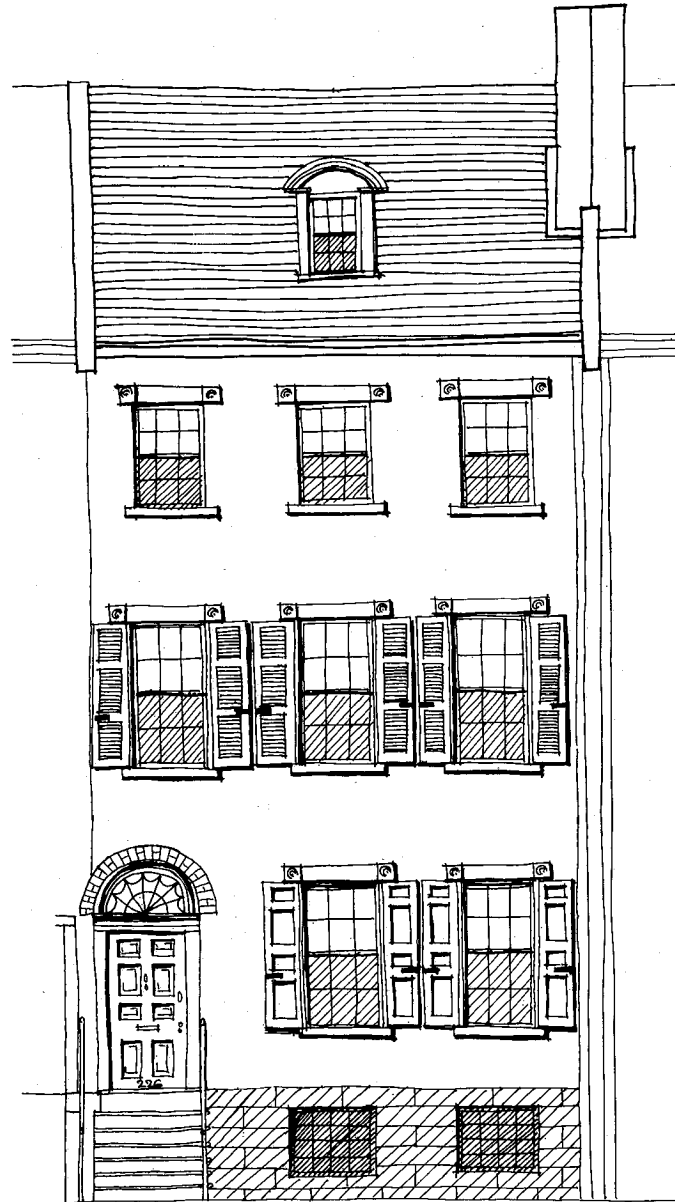
**MITCHELL'S**  
**DECORATIVE HARDWARE**

*Specializing in fine decorative hardware, door knobs, knockers, mailslots, house numbers, and kick plates all in solid brass as well as a complete line of kitchen and bathroom faucets, fixtures, and accessories.*

1100 S. Delaware Ave.  
Riverview Plaza  
Philadelphia, PA 19147  
\* FREE PARKING \*  
**[215] 755-6140**

Visit our showroom

Midtown Realty Corporation is proud to present  
*226 West Washington Square, Philadelphia*  
*A Magnificent Federal Home*



This exceptional four bedroom, five and a half bath Federal home faces Washington Square. Built in 1819, it was magnificently restored, using the finest quality materials and superior craftsmanship throughout.

This residence is beautifully proportioned and maintained with grand formal entertaining spaces that are equally effective for comfortable living. Its Federal character is accented by rich period details, including crown moldings, original random-width pine floors and high ceilings. The interior also provides wonderful architectural features such as large Palladian windows on each landing, which provide an exceptionally brilliant stream of light throughout the stairwell. In addition, there is a deeded parking space behind the enclosed, private, brick garden.

Price upon request

For information contact: **Midtown Realty Corporation**, 1700 Walnut Street, Philadelphia, PA 19103 215-546-0550

# PARKING LOT ... The Latest Chapter

On Wednesday, May 2, the seven-judge Commonwealth Court of Pennsylvania held a brief hearing on our appeal to overturn the decision to open the parking lot (now in operation) at 3rd and Lombard Sts. We should have a decision relatively soon. If the court does not find in our favor, we have the right to appeal to the Pennsylvania Supreme Court. Furthermore, should the operation of the lot create a nuisance to the neighborhood (noise and air pollution, traffic, etc.), we can appeal to Judge DiNubile to order it closed on that basis. (As you may recall, it was Judge DiNubile who issued the injunction against the lot last July.)

Although we are fortunate in having a devoted and talented legal team working on a pro bono basis, expenses such as duplicating, postage, court reporting, etc. have been incurred. Contributions will be appreciated. Please make your checks payable to St. Peter's School Parking Lot Fund and mail them to St. Peter's School, 319

Lombard Street, Philadelphia, PA 19147.

On a conciliatory note, the lot owner, Gloria B. Levin, wrote the following letter:

March 12, 1990

St. Peters School  
Society Hill Civic Association  
South Street Neighborhood Association  
Queen Village Neighbors' Association

Since the Commonwealth Court handed down its decision of January 22, 1990, permitting construction of the parking lot at 3rd & Lombard, several attempts have been made to solicit input from community representatives relating to the character and aesthetics of the parking lot. As of this writing, we have not heard or received input from any representatives, as we had hoped.

In the meantime, as you know, construction of the parking lot has continued and is

nearing completion. We have reached a stage in the construction of the lot where any input from the community is essential now, if it is to be considered in the construction process. In short, time is of the essence.

Through comments I have received in the community and elsewhere, I understand the lawsuit filed by me may represent an obstacle to you towards resolution of, not only the parking lot, but other outstanding issues.

Therefore, I have instructed my lawyers to withdraw the lawsuit, without prejudice, immediately.

I hope that all parties can now seek the common ground necessary to bring an end to this conflict. There are many important challenges facing our city. I believe it is time to face these challenges together and to put the past behind us. I look forward to working with you for the betterment of both the neighborhood and Philadelphia as a whole.

Sincerely,

*Gloria Levin*  
Gloria B. Levin

## The best weekends begin in Philadelphia's most historic and exciting neighborhood.



Call for incredible value weekend packages from Society Hill's only fine hotel.

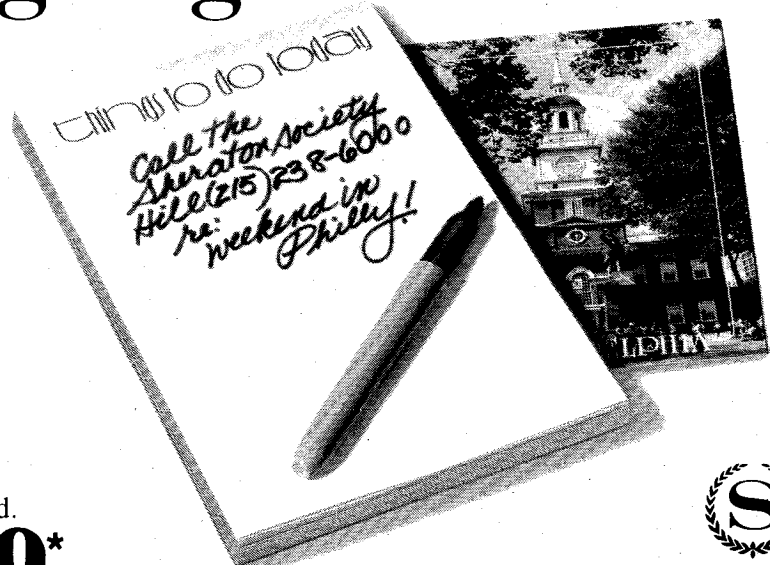
Our most popular package.

**Heart of History**—everything you need to enjoy and discover the most historic neighborhood in Philadelphia.

- Discount coupon book for museums and historic sights.
- Manager's cocktail receptions.
- Walking Tour of Historic Philadelphia.
- Continental breakfast for two in the Courtyard.
- Beautiful skylit pool.
- Parking is free, and so are the kids\*.

**\$69\***

Ask about our other value weekend packages when you call (215) 238-6000. The Sheraton Society Hill will show you how to *really* enjoy Philadelphia.



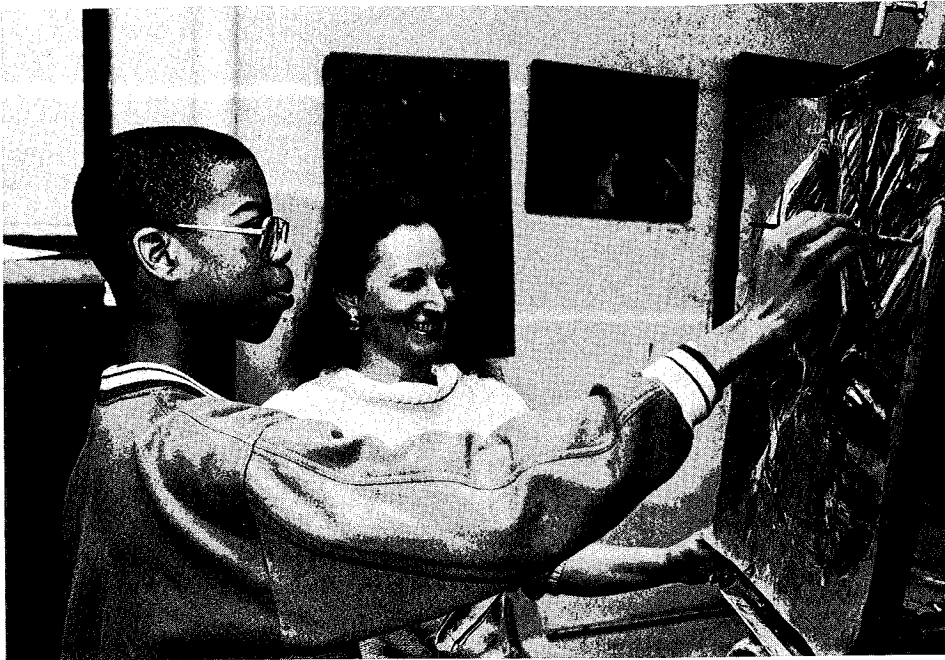
**Sheraton Society Hill  
Philadelphia**

The hospitality people of **ITT**

**Whatever you're planning, call us first.**

**One Dock Street • Society Hill, Philadelphia • (215) 238-6000**

\*Rate is based on double occupancy per person, per night, Friday and Saturday nights through 12/31/89. Two children 17 or younger can stay in parents' room with existing bedding. Reservations required and subject to limited availability. Not applicable to groups. Tax, gratuities, food and beverage and other incidentals not included.



Liz Eaby, chairperson and coordinator of Headhouse Crafts Fair, and Dennie Ward aspiring artist and student at High School of Creative and Performing Arts

## CRAFTS AND FINE ARTS SHOW AT HEAD HOUSE

Over the last 22 years, the annual Head House Crafts Show has become a Philadelphia tradition. Each weekend at least 30 participants are selected from a rotating group of about 75 craftspeople, some dedicated to the utilitarian aspect of crafts, and others more interested in experimenting with new approaches to form. In its alfresco setting, the show attracts families from the area and tourists alike. The show runs weekends through Labor Day, noon to midnight on Saturdays, and noon to 6 pm on Sundays. There will be periodic craft demonstrations and free workshops for children each Sunday from 1 to 3.

At this year's opening weekend, June 16 and 17, student artists from the High School of Creative and Performing Arts will exhibit alongside professional craftspeople. This is a repeat performance for the students of this school, since a similar student exhibit last year was well received.

"Crafts are our livelihood. Who would understand better than we the need to support creative arts and encourage young artists?" says Elizabeth Eaby, director of the

Head House Craftsmen's Association. The Association provides two cash awards at the Board of Education's annual Young Artists Exhibit held at the Civic Center and for several years has given scholarships for school projects. The Association also encourages college students to participate in the show, and later this summer students from the Pennsylvania Academy of Fine Arts, Moore College and the University of the Arts will be exhibiting their work.

\*\*\*\*\*

### LET'S TALK DIRTY!

**The SHCA Maintenance Committee wishes to remind neighbors that:**

- (1) **Litter barrels are for litter only.**  
Penalty for dumping household trash in or at these barrels is a fine of \$25 to \$300. Please cooperate. If you see violations, feel free to notify us at 574-9284 or you can call police sanitation officers at 686-3082.
- (2) The City's Anti-graffiti Network is ineffectual, so we must rely on *ourselves* to keep Society Hill graffiti-free. Call us at 574-9284 if you need advice or help in eradicating graffiti.

## City Tavern



Fine Food & Spirits  
Private Dining Rooms

Second St. near Walnut  
Philadelphia, PA 19106

Reservations  
923-6059



Discover the shop in the courtyard garden filled with herb plants, gardening books and accessories, herbal toiletries, potpourri and more!  
We specialize in custom dried flower arrangements, wreaths and topiary for Weddings and special events.

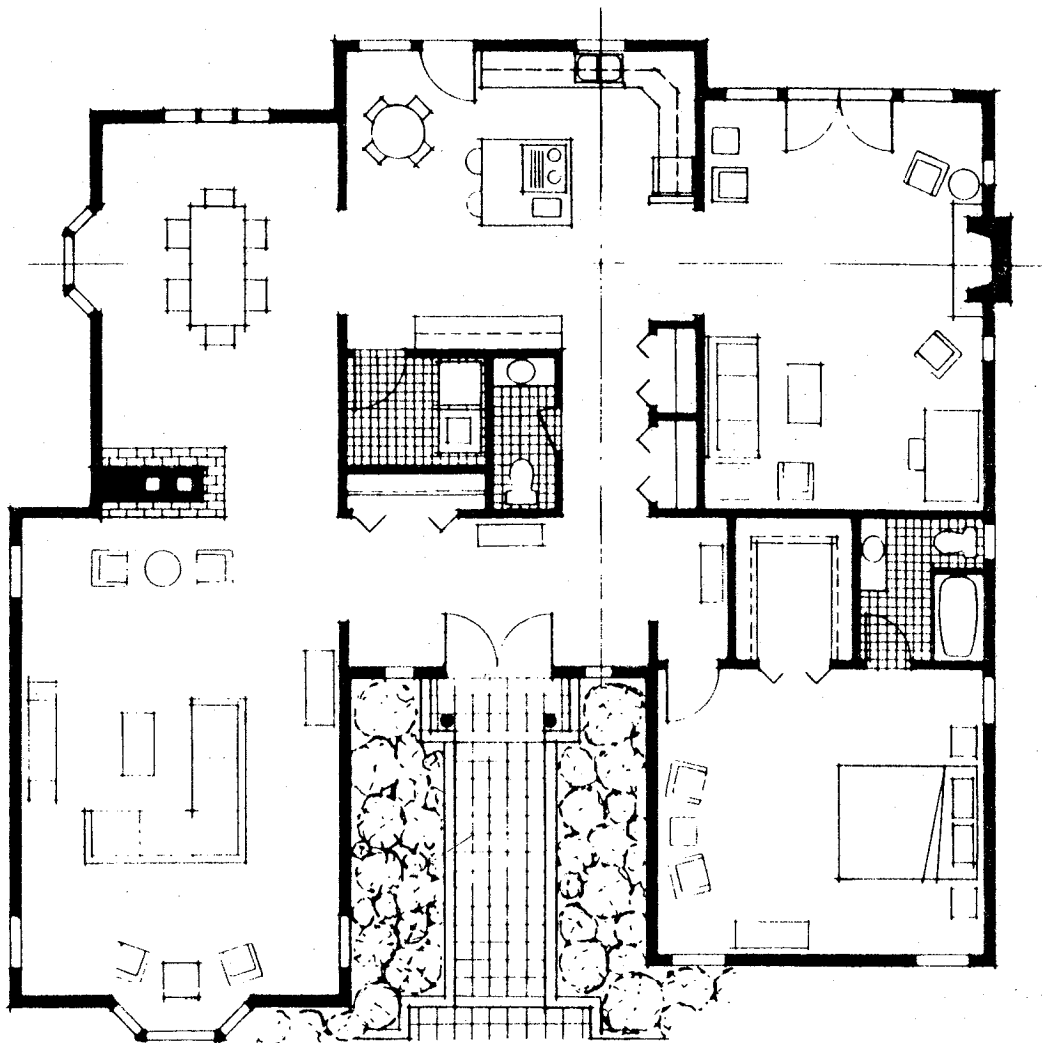


Herbal Accents for the home, garden, kitchen and bath!

126 Lombard Street 440-0304

Shop Hours:  
Tues-Fri: 11-6 Sat. 11-9 Sunday 12-6





Most people enjoy music. Most people have a music system in only one room of their home. Think how much more enjoyable that home would be if music were in other rooms too. The time to plan for any music system is during the design stage. David Mann Audio has the experience, sensitivity and technical prowess to design and install even the most sophisticated home entertainment systems.



**DAVID MANN AUDIO**

NewMarket • Second & Lombard Sts. • Philadelphia • 922-3000

**CUSTOM INSTALLATIONS WITH ATTENTION TO DETAIL**



## STARR GARDEN CLEANS UP

Almost one hundred people came to Starr Garden, 6th & Lombard Streets, for the Clean-up Fair on Earth Day, April 21st. The drizzle (later, rain) did not dampen the spirits of those who picked up trash, washed off swings and picnic tables, and swept up the park and the adjoining sidewalks.

Some of the activities that added a festive air to the work party were:

- \* Earth Day Poster Contest with prizes
- \* Free Library Story Hour
- \* Sale of "Friends of Starr Garden" T-shirts, which were designed by neighbors Mary Galgon and Bill Russel. (To order T-shirts call Starr Garden, 592-5641 after 1 pm Monday - Friday.
- \* Bake and soda sale organized by Nancy Shomer, Meg and Tony Johnson and Susan Dictor.

\* Plant sale organized by Meg Johnson. A good time had (and good work done) by all!

The Friends of Starr Garden would like to thank State Senator Vincent Fumo and Councilman James Tayoun for their fruitful efforts on behalf of Starr Garden. Under the sponsorship of Senator Fumo, a grant of \$25,000 from the State Community Affairs Fund has been awarded to Starr Garden and an additional \$25,000 for fiscal 1991 has been promised. Friends of Starr Garden has also received assurance from Councilman James Tayoun's office that the budget for fiscal 1991 includes a \$100,000 grant for the park. The funds will be used for sorely needed restoration and repairs to the much-used playground.

\*\*\*\*\*

## THE GREENING OF McCALL SCHOOL

The completion of the first stage of the greening of McCall School was celebrated on Monday, May 21st. The event marked the culmination of months of planning for an upgraded exterior of the 7th Street entrance, boasting newly planted trees and azalea bushes. Lincoln High School students volunteered their time and effort to do most of the actual planting.

The greening reflects the joint efforts of parents, community members, the SHCA and "adopters" of the school: the Biddle family, Pennsylvania Hospital and Mellon Bank. Pennsylvania Hospital will assume responsibility for the maintenance of the planted areas.

The planting of the trees and bushes began during the week of April 3rd, marking the start of a multi-stage project. The next phase will focus on beautifying the 6th Street entrance, and this effort will begin early in September. According to Karen Biddle, a member of one of the adopter groups, as well as a parent of a McCall student, "the school will look as good on the outside as is the quality of the education within."

Thanks to all the individuals and organizations involved. The school and the neighborhood reflect community pride in a job well done.

\*\*\*\*\*

## AT THE BALCH INSTITUTE FOR ETHNIC STUDIES

One hundred and seventy toys and games, old and new, will illustrate a century of change in ethnic images from 19th century crude stereotypes to recent "ethnically correct" dolls and computer game heroes and villains. This new exhibition *Ethnic Images in Toys and Games* has been on display since April and will extend through the summer to mid-October.

The exhibit includes 100-year-old cast iron mechanical banks to character dolls, such as Michael Jackson dolls, and working video and pinball games. The exhibit — designed to be highly interactive with stations in each section for learning and play — reveals that toys and games are more than just playthings. It demonstrates how ethnic images not only reflect the attitudes of the culture which manufactures them, but also mold the attitudes of the children who use them.

The Balch Institute's most frequented long-term exhibit which extends through 1992 is *Freedom's Doors: Immigrant Ports of Entry to the United States*, which is a simulation of the "Ellis Island" experience. (Be sure to sit on the reproduced Ellis Island benches — authentic and uncomfortable!) The Balch Institute is a combined research library, ethnographic museum and education center. It functions as a living tribute to the cultural diversity of America. Housed at 18 S. 7th Street, within a block of Independence Mall, the museum is open Monday through Saturday from 10 am to 4 pm. Adults \$2; students and senior citizens \$1; children under 12 free; \$5 is maximum family charge. Telephone: 925-8090.

### PAUL HERTEL & CO., INC.

Established 1908

*Insurance*

AUTO  
RETAIL  
MARINE  
AIRCRAFT  
PERPETUAL  
HOMEOWNERS  
PROFESSIONAL  
CONDOMINIUMS  
MANUFACTURERS

N.E. Cor. 3rd & Chestnut Sts.  
Philadelphia, PA 19106  
Telephone: WA 5-7656

## TREE WORK

HAROLD M. ROSNER

*CARING FOR CITY TREES*

PRUNING  
PLANTING  
REMOVALS  
CABLING  
FERTILIZING

18 Years Experience

483-1377

## SUMMER CONCERTS AT KAHN PARK

An exciting series of free summer concerts will be performed at Louis I. Kahn Park, located at the corner of 11th and Pine Streets. The array of musicians include internationally acclaimed folk musicians *Saul Broudy & Friends*, one of Philadelphia's premier folk groups. Another folk music concert will feature *Corazon al Sur* whose repertoire extends to Latin and South American indigenous sounds. The Kahn Park music series also welcomes back the *Merion Concert Band*, with their wide-ranging program, from Irish ballads to works by Gustav Holst, under the baton of Mary Culbert. These concerts are funded in part by grants from The Presser Foundation, the Philadelphia Folk Society, CoreStates Philadelphia National Bank, and Smith-Kline Beecham.

All Wednesday night concerts begin at 7:30 pm. So note the concert schedule. See you at the park!

June 20	Merion Concert Band
July 18	Dixieland City Rhythm
August 15	Saul Broudy & Friends
Sept. 12	Corazon al Sur
Oct. 3	Merion Concert Band

## Historic Designation (Continued from Page 1)

on the agenda.

The Preservation Coalition has taken the lead in working with several neighborhood groups, including the Society Hill Civic Association, to strongly urge the Commission to avoid any further delay in considering these nominations. The contribution to this process by Myrna Field Baum, on behalf of Society Hill, has been invaluable. The Coalition recently received assurance from the Commission that the community volunteers will be welcomed for the first time to help with specific tasks usually performed by the Commission staff — a move which should expedite the consideration of pending nominations. These volunteer activities will include typing, stuffing envelopes, and posting notices of public meetings throughout Society Hill. Please contact Deborah Kelly at 546-0531, Myrna Field Baum at 545-7477, or Sherrill Joyner at 546-0531 if you would be willing to help.

(Prepared by Deborah Marquis Kelly, Director, Historic Neighborhoods Preserved Program, The Preservation Coalition of Greater Philadelphia)

## PRESERVATION: Be A Part Of It!

The Preservation Coalition of Greater Philadelphia is the only area-wide organization, with a staff and legal counsel available, devoted entirely to saving important historic buildings and sites. It has joined Society Hill and other neighborhoods in pushing for designation of historic districts in the City and has been involved in writing the regulations to make this possible. It publishes the monthly preservation newsletter, UPDATE. It co-sponsors the popular annual Old House Fair. It takes immediate action on preservation emergencies. And it gives terrific parties (Lit's, The Bellevue), with two held this spring at Ardrossan and Andalusia.

The Coalition needs to strengthen and expand its influence so that your voices will be heard. It needs your ideas. Please join today. For information, call 546-0531.

\* \* \* \* \*

# HEAD HOUSE SQUARE CRAFT SHOW

*Every weekend June 16th through Labor Day*

**Saturday 12 - 12    Sunday 12 - 6 p.m.**

***Free Children's Workshop on Sunday***

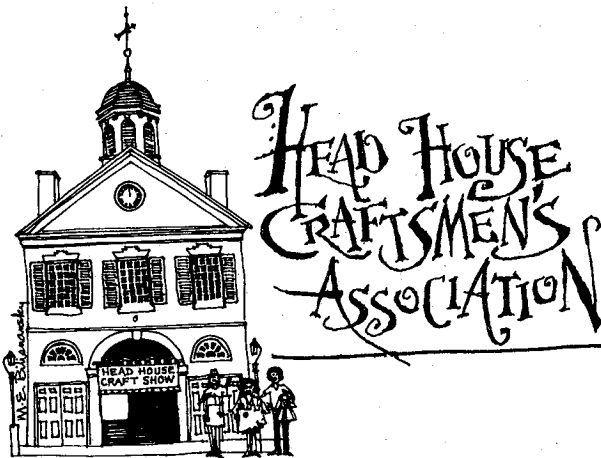
- Wood
- Toys
- Ceramics
- Metalwork
- Jewelry
- Photography
- Fiber Art
- Origami
- Graphics

Head House Square on 2nd and Pine  
near Society Hill, Philadelphia,  
in historic covered brick market.

Held rain or shine

**Free.**

*Visiting featured craftspeople  
every weekend*



## I-95 CONSTRUCTION

(Continued from Page 1)

and continue as two through-lanes to the Ben Franklin Bridge.

- Nighttime traffic stoppages on I-95 will occur sometime during the construction project to install sign structures and to erect beams for the Walnut Street Pedestrian Bridge and the extended landscaped cover over I-95 at Dock Street.

- Traffic on Market, Front, Walnut, Dock, Water and Queen Streets will be maintained but subject to some restrictions at various times. Traffic congestion should also be anticipated at times on Delaware Avenue.

Once the traffic patterns are in place, drivers should anticipate additional travel time of ten to twenty minutes — based on morning commuter southbound traffic and afternoon commuter northbound traffic, assuming no weather-related problems or accidents on the highway.

### Timetable

- Traffic restrictions were begun in April 1990.

- By November 30, 1990, three lanes of traffic will be temporarily restored in each direction. (The contractor will be fined \$10,000 per day for each day he is late restoring traffic.)

- Full traffic restrictions will begin again on March 1, 1991.

- All traffic restrictions will be removed from the ramps and mainline of I-95 by July 1, 1991. (Under an Incentive/Disincentive Clause in the contract, the contractor will be fined \$30,000 a day for each day he is late removing the traffic restrictions. On the other hand, the contractor will earn \$30,000 a day bonus for each day traffic restrictions are removed prior to July 1, 1991.)

### Urban Expressway System

Under the Federal Highway Act, first proposed in 1945 to establish a national system of interstate highways, the Delaware Expressway is our region's piece of I-95. Stemming from Maine to Miami, Florida, it replaces US 1 as the major East Coast highway, and its total length today is approximately 1,808 miles. Most relevant to our region, however, is the fact that **New Jersey will not complete approximately 30 miles of the interstate around the Trenton area. A section of the New Jersey Turnpike has been designated as I-95.** Because of this unconnected piece of roadway, which causes inconvenience to travelers along this part of the route, the

Pennsylvania Turnpike Commission is looking to build an interchange in Bristol Township, Bucks County to connect I-95 with the New Jersey Turnpike.

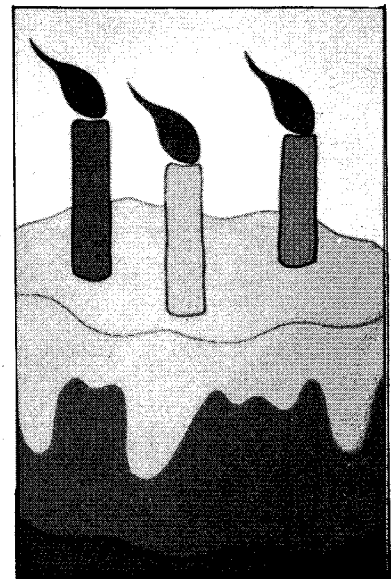
As part of Philadelphia's total expressway system, I-95 connects with the following roadways: **I-676** (Vine Street Expressway), still under construction; **I-76** (Schuylkill Expressway), mercifully completed at last; **I-476** (Blue Route) currently

undergoing construction. In Pennsylvania, I-95 runs for approximately 51 miles through the southeast corner of the state, beginning at the Pennsylvania-New Jersey state line and continuing to the Delaware state line. When the ramp construction and the Walnut Street Pedestrian Cover phase in our area is completed next summer, Interstate 95 will finally be finished from end-to-end.

## BEAUTIFY YOUR HOME OR BUSINESS



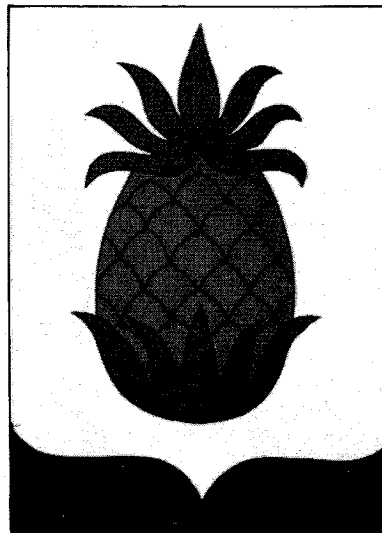
Windsport's Fancy Flags greet guests with a vivid splash of color at your door!



Special occasions call for special flags—and Windsport gives all your birthdays, anniversaries, and holidays a lift with a colorful selection of celebration flags!

Fancy Flags are handsewn of heavy-weight, all-weather nylon in bright, fade-resistant colors. Each piece of the design is applied with a tight satin stitch. Then the background fabric is skillfully cut away from behind the applied piece, creating a design that is equally visible, equally beautiful from either side. Our flags are made in the USA—and made to last, with double-lockstitched hems all around.

See the entire collection at



Established 1975

# BETSY'S



# PLACE

323 Arch Street, Phila., Pa. 19106

(215) 922-3536

# HOSPITAL WASTE MANAGEMENT SYSTEM AGREEMENT

Members of the Newsletter staff had an opportunity recently to read for the first time in its entirety the agreement reached between the board of the Society Hill Civic Association and Thomas Jefferson University Hospital regarding the incinerator proposed for 10th and Sansom Streets. At that time we learned that details of the agreement which were printed in our December and March issues were in error due to a misinterpretation of Section 3.7 of the agreement dealing with permissible emission levels. We are, therefore, printing below the entire agreement, minus appendices. We urge you to read this agreement carefully as it binds you into the unforeseeable future.

AGREEMENT between Thomas Jefferson University (hereinafter referred to as "TJU") and the Society Hill Civic Association, (hereinafter referred to as "Society Hill");

WHEREAS, Society Hill and TJU both desire to maintain TJU as a vital health care institution in the area and to protect the environment and public health and safety, and TJU desires to construct and operate an on-site incinerator and Society Hill agrees not to oppose such construction and operation pursuant to the terms and conditions herein;

THEREFORE, Society Hill and TJU agree as follows:

## 1. Definitions

### 1.1 Incinerator

A properly designed, installed (on-site) and operated device to dispose of only the trash generated by Thomas Jefferson University under the terms and conditions of the Operating Permits. The unit is to be located in the southeast corner of the hospital building, near the corner of 10th & Sansom Streets, Philadelphia, PA.

### 1.2 Society Hill

The community group comprised of all individuals living in the area bounded by Front Street to Eighth Street to the North side of Lombard Street to the South side of Walnut Street. These individuals are represented by the boards of the Society Hill Civic Association which are authorized to execute this agreement and perform these obligations in accordance with all applicable city and state statutes and the bylaws and incorporating agreements of the Association.

### 1.3 Trash Study

The various studies performed by both TJU and its consultants (Energy Investments, Inc. October, 1987; TJU Management Engineering Department July 1988; Drexel University July, 1989) for the purpose of identifying both the volume and the general content of its trash. The purpose of such study is to provide further verification of the design assumptions made by TJU's design engineer.

Trash is defined as only the general and the biohazardous materials which are generated daily by the University. It does not include any chemotherapeutic, hazardous chemical or radioactive waste products.

## 2. Purpose and Scope of Agreement

2.1 This document represents the agreement reached between Society Hill and TJU that Society Hill will not oppose the construction and operation of an incinerator in accordance with this agreement and the related regulatory permits.

2.2 TJU's goals include the prevention and treatment of disease to the benefit of its patients, employees, and neighbors. In both the construction and operation of the incinerator TJU intends to take reasonable steps to assure that it does not adversely affect the environment surrounding its facilities.

2.3 As a result of the inherent risks, costs and loss of management control in the use of trash haulers, the capacity for on-site incineration is necessary for the long-term viability of TJU.

## 3. Rights and Obligations of TJU

3.1 TJU has the authority under law to enter into an agreement of this nature and the signatory below has the authority to commit the University.

3.2 It is agreed that TJU has the right to construct an incinerator according to the specifications included in the Operating Permits.

3.3 It is agreed that TJU has the right to operate an incinerator according to the requirements of the Operating Permits.

3.4 TJU agrees to use its best efforts to develop systems and strategies of waste management to reduce the levels of undesirable contents of its waste being burned. Such a system will be comprehensive in nature, covering all waste to be burned on-site. TJU will engage a firm with health-care or national expertise in the development of systems to assist its in-house staff, as appropriate. The preliminary approach to the development of this system is outlined in "Appendix I - Preliminary Implementation Plan".

THOMAS JEFFERSON UNIVERSITY

*Michael J. Bradley*  
Michael J. Bradley  
Senior Vice President for Health Services

7/11/89  
Date

SOCIETY HILL CIVIC ASSOCIATION

*Rebecca Stoll*  
Rebecca Stoll, President

7/11/89  
Date

3.5 TJU agrees to begin burning waste in the completed incinerator only in accordance with the implementation schedule of the system described by paragraph 3.4 for any waste stream that will be part of such operation.

3.6 TJU agrees to develop periodic internal reports on reasonable notice summarizing the operation of the waste management system to assure that it is being used for its intended purpose. The reports will include a listing of the components of the waste stream and the weight and percentage of each component for the period summarized. Since the composition of the waste is based on random samples, the reports will also include a summary describing the statistical range of error that may be present in the composite report. Appendix II is an example of a possible format for the two reports. It is understood that such reporting may cease with the mutual agreement of the parties.

3.7 TJU will perform one or more emission tests, as part of the finalization of the permit process, to establish the emission levels allowable under the permit. At that time, the percentage of PVC plastic in the waste stream will also be established. TJU agrees to manage the waste stream in such a manner that the proportion of PVC plastic in the total waste will not exceed 130% of the percentage established at that time.

## 4. Rights and Obligations of Society Hill

4.1 Society Hill has the authority under law to enter into an agreement of this nature and the signatory below has the authority to commit the Association on behalf of its members.

4.2 Society Hill agrees that the Association and its officers and committee members will not oppose TJU's construction and operation of the on-site incinerator. They accept that such operation is consistent with the quality of life in the area.

## 5. General Obligations of Both Parties

5.1 It is not the intent of either party to enter into an agreement which violates any city, state or federal statute or regulation.

5.2 Both parties agree to continue to act in the good faith and cooperative manner which has led to the development of this agreement.

## 6. Modifications and Disputes

6.1 Any additions, deletions or changes to the basic scope of this Agreement will require an official Amendment to this Agreement signed by the authorized representatives of the parties to this Agreement.

6.2 No verbal or written statement or conversation between the parties hereto or their representatives, whether the same have been implied or direct, occurring either before or after the execution of this Agreement, shall be construed as having any bearing or effect on this Agreement or any portion thereof, it being understood that this written Agreement evidences the complete Agreement between the parties.

6.3 It is agreed that Society Hill has not waived its rights under law to take action to prevent any noncompliance with this agreement. Any such action may seek to stop noncomplying operations as provided by law, including any injunctive relief when appropriate. TJU agrees not to challenge the standing of Society Hill to exercise such rights under the law.

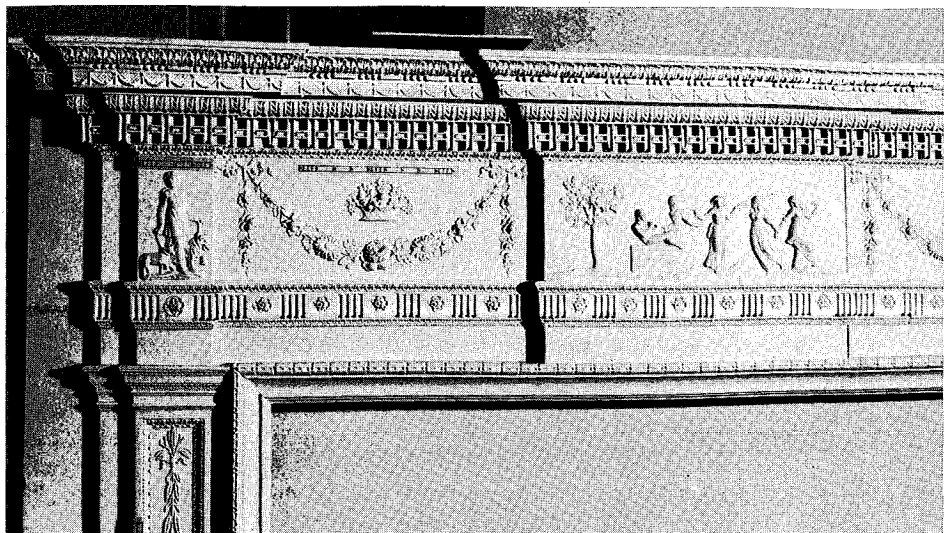
## 7. Term of the Agreement

7.1 The term of this Agreement shall be for the period commencing on September 1, 1989 and extending for as long as the incinerator is operational unless terminated by mutual consent of the parties.

7.2 This Agreement is only relevant if all governmental approvals for an incinerator are granted to TJU. If, for any reason such approvals are not granted, this Agreement will be null and void. It is understood that the obligations of each party are contingent on the other party's performance under this Agreement.

If you would like a copy of the entire agreement, including appendices, call the SHCA office at 629-1288.





Ornament from a typical Wellford mantelpiece

### DOES THIS LOOK FAMILIAR?

Knowledge is sought of Wellford mantelpieces and other architectural ornamentation for a monograph on the life and work of Robert Wellford, composition ornament-maker of Federal Period Philadelphia.

Since much of Society Hill was built during the period when Wellford worked, it contains many examples of his craft. Some examples have been identified, but undoub-

tedly others exist. Wellford ornament was a molded plaster-like material that was glued to architectural woodwork, most especially mantels, and is characterized by classical scenes, figures, urns, spiraling vines, and floral swags. If you own or know of a mantelpiece having ornament of this nature, please contact: Mark Reinberger, 430 West Clapier Street, Philadelphia, PA 19144.

### SOCIETY HILL LOGO CONTEST

SHCA is asking all the artists and would-be-artists in our community, adults and children alike, to design a new logo for Society Hill. The association plans to use the logo on decals, T-shirts, and even a flag so our neighborhood can show its colors. There are no size, shape, color or design limitations, so let your imagination run free.

Please submit your colored drawings to SHCA, P.O. Box 3, Phila., PA 19105 by June 30, 1990.



**U.S. CENSUS:**

**If you have not received a form call  
1-800-999-1990.**

# BASE CAMP

## QUALITY EQUIPMENT

## FOR DISCRIMINATING

## OUTDOOR ENTHUSIASTS

PATAGONIA  
VUARNET  
MOONSTONE

**723 Chestnut**

**592-7956**



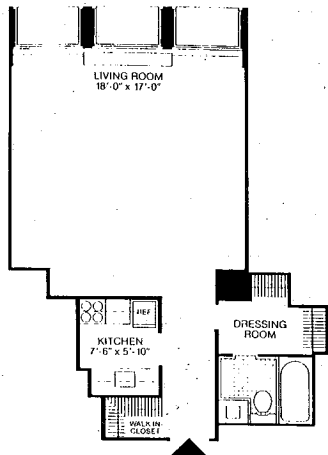


# SOCIETY HILL TOWERS

200-220 Locust Street

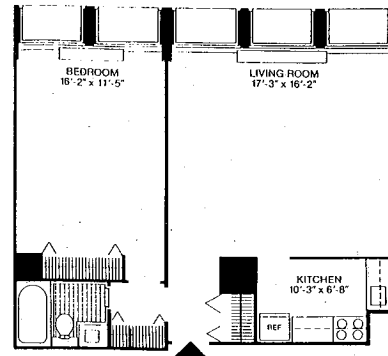
## Now Available For Sale

### Studio



High Floor, City View: **\$69,900**

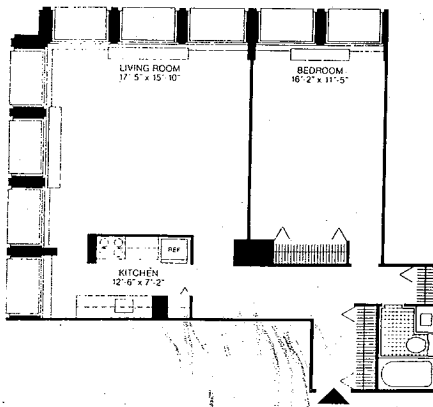
### One Bedroom



Bridge View, Excellent Value: **\$79,900**

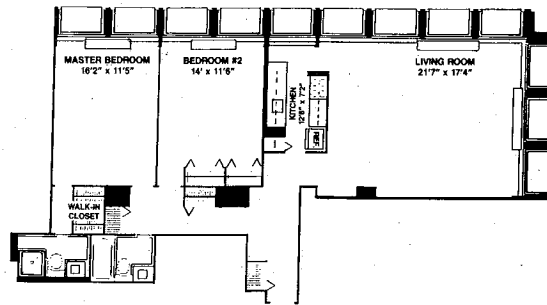
Head House Square  
City View, Investment Potential:  
**\$77,500**

### One Bedroom Corner



Southeast View, High Floor,  
Bright and Sunny: **\$99,900**

### Two Bedroom, Two Bath



City View: **\$159,900**

Penthouse!  
Customized Improvements,  
Panoramic View: **\$275,000**



## ALLAN DOMB REAL ESTATE

Center City Philadelphia's Largest Luxury Condominium Realtor®

**215-545-1500**

1608 Walnut Street • Suite 1303 • Philadelphia, PA 19103