

Society Hill REPORTER

...Working Together
For a Better Place To Live

January 1999

Newsletter of The Society Hill Civic Association

Culture Culture Fete

Czars of Taste, Tourism, Theatre and *The Arts* Treat Us

Center City Philadelphia is *happening*, and much more is planned. Attend the general membership meeting on Wednesday, January 20, 1999, 7:30 PM, at the Society Hill Sheraton, to hear firsthand about the exciting activities in our city.

- Speaker **Ellen Solms** directs the Avenue of the Arts, Inc., an independent non-profit organization established in 1993 to oversee the development of Broad Street into a mecca of arts and performance venues stretching both north and south from City Hall. Ellen works closely with the City, the corporate community and every constituent cultural organization to plan each project and assist with critical management and development strategies, real estate decisions and long range planning and programming.
- **Judy Faye**, Executive Director of Center City Proprietors Foundation, a non-profit agency created to enhance and market the image of the City of Philadelphia, will address "Restaurants Today and in the Future." Judy has been responsible for managing and promoting such programs as: The Book and The Cook; The Italian Market Festival; A Celebration of Style; Absolut Barrymore Cocktail Competition; South Street Seven Arts Festival; PhillyFest; Freedom Festival; Philadelphia Easter Parade; and the list goes on. The Book and the Cook in scope is a uniquely Philadelphia program and has established the city nationally as a fine dining capital.

- **Meryl Levitz**, President and Chief Executive Officer of Greater Philadelphia Tourism Marketing Corporation, will address "Tourism and Its Impact on the City." Meryl has a wealth of experience with tourism development and marketing and will share the research findings on just who is coming to our city and its impact on our neighborhood. Among her most notable accomplishments was the creation in 1993 of Welcome America! Now an annual 11-day celebration of America's birthday, it attracts more than two million visitors to the area. She was also responsible for the creation and production of such popular festivals as Jam on the River, Neighbors in the New Year, Neighbors in the New World, 200th Anniversary of the Bill of Rights, and Benjamin Franklin. She was co-director of the opening of the Pennsylvania Convention Center in 1993 and the Reading Terminal Train Shed in 1994.
- Artistic Director of the Wilma Theater, **Jiri Zizka**, will present an overview of the past twenty years of regional theatre in Philadelphia. He is also uniquely qualified to answer what is happening now — whether the theatre scene is thriving or dying. His most recent directorial outings include *Arcadia*, *The Ruling Class*, *On the Razzle*, and *Love and Anger*.

Take advantage of this opportunity to hear about our city from the people who make it happen. Each speaker will have about fifteen minutes to present formally and then the meeting will be opened to questions. Members will have the opportunity to mix and mingle from 7:30 to 8 PM.

Save These Dates:

General Membership Meeting Wednesday, January 20

Society Hill Sheraton
One Dock Street
7:30 PM: Meet Your Neighbors
8:00 - 9:30 PM: Program

Open House SHCA & Philadelphia Sports Club Thursday, January 21

230 S. 5th Street
5:00 - 8:00 PM
Wine and Cheese
Mini Workouts & Demos
Dress Very Casually

First Meeting Historic Designation Process Wednesday, Feb. 10, 10 AM

18th Floor, 1515 Arch St.
Look for special newsletter
at the end of month

Philadelphia Chamber Ensemble Friday, January 15, 8:00 PM Sunday, January 17, 2:00 PM

Old Pine Street Church
412 Pine Street
Vivaldi, Caruffi, Damase, Brahms

Public Safety Committee February 7

Call office for time & place:
215-629-1288

Made by Hand Craft Fair Sat., February 6, 11 AM - 6 PM Sun., February 7, 11 AM - 5 PM

Old Pine Community Center
4th & Lombard Streets
Over 40 artisans and food!
Admission: \$4 Adults,
\$1 Children 6-12
\$1.00 off with this newsletter

Clean-up Day Wrap Up

The sun finally shone on Clean-up Day resulting in the first sunny Clean-up Day in two and a half years! Many neighbors stopped by the Super Fresh to pick up brooms and bags and by the end of the morning the street corners were piled high with filled bags. The Sanitation Department made several pick-up trips to clear away all the debris, leaving our neighborhood clean and attractive!

Most people honored the alternate side parking signs, making it easy for the Streets Department's sweepers to go up and down the streets, cleaning away six months of dirt. The large dumpster that waited in the McCall School play yard was overflowing by the middle of the afternoon.

Between 12:30 and 1:30, neighbors, city workers and others gathered in the cafeteria at Pennsylvania Hospital for a delicious community lunch. The food was generously donated by the South Street restaurants listed at the end of this article.

Clean-up Day was jointly sponsored and organized by The Society Hill Civic Association and The Washington Square West Civic Association. The covered area extends from Front Street to Broad Street and from Walnut Street to Lombard Street or South Street. This is a very large area and we were successful due to the cooperation of many Philadelphia agencies and volunteers from both neighborhoods.

Thank you to all who helped!

— Janet Cooke



A special thanks to:

6th District Police Station
South Street Mini-Station
Pennsylvania Hospital (Trish Dych)
Thomas Jefferson Hospital
Philadelphia Parking Authority
Philadelphia Sanitation Department
Philadelphia More Beautiful Committee
Citizens Alliance for Better Neighborhoods
McCall School • St. Peter's School

and for the wonderful food, those great places on South Street (or slightly off South):

Bridget Foy's • Chef's Market
Dairy Queen • Dickens Inn
Famous Deli • Friday's
Jack Downey's • Koffmeyer's
Montserrat • PhilaDeli
Pizzeria Uno • Pomodoro Pizzeria
South Street Philly Bagels
South Street Souvlaki
Super Fresh,
especially Mike Costello for providing coffee and doughnuts
Wawa • Zeke's Deli

Thanks to the neighbors who organized the luncheon:

Allen and Donna Stiteler, Harvey Young, Esther Bernard, and Ron Meliment deserve a special hand.

Helping to get out the flyers and hang the parking notices were Larry Meehan, Mary Sturdivant, Jim Covello, Jacqueline Hokanson, Jennifer Orlaff, Connie Stephano, David Stevens, Linda Percival, Liza Seltzer, Al Smith, Dick Epstein, Joanna Cooke, Michael Ayjian, Hans Bombeck, Ed Klees, Perry Whyte, Michael Czeredarczuk, Martha Moore, and Joel Eichen.

Handing out brooms and bags at the SuperFresh were Carol Bergen, Alan Schectman, Joycelyn Block, Bill Smith, and Joanna Cooke.

Finally, the biggest thanks of all goes to Janet Cooke, for chairing Clean Up Day. This is her last stint at that post and she is actively looking for a replacement. Give the office a call if you would like more information or are interested in participating: 215-629-1288.

Society Hill REPORTER

published by
The Society Hill Civic Association
P.O. Box 3, Philadelphia, PA 19105
Phone (215) 629-1288 • Fax (215) 592-4239

EDITORS

Mary E. Sturdivant and Cirel Magen

EDITORIAL BOARD

Ruth Brill • Matthew DeJulio • Joel Eichen
Amy Foran • Bernice Hamel
William Hawkins • David Woods

CONTRIBUTORS

Richard Bost • Jay Borofsky • David Brill
Mel Buckman • Janet Cooke • Rody Davies •
Barbara Gelman • Bill Hawkins
Lorna Katz Lawson • Martha Levine • Liza Seltzer
David Stevens • Norman Tissian

BUSINESS AND ADVERTISING

William Hawkins

CONTRIBUTIONS WELCOMED

Next Editorial Deadline: February 18, 1999
Mail contributions to above address.

VISIT OUR WEB SITE AT
<http://www.wnwr.com/shca>

Historic Designation Now!

Stanhope Browne urges everyone to attend the Philadelphia Historical Commission meetings about designation. The first one is Wednesday, February 10, at 10:00 AM on the 18th Floor at 1515 Arch Street. Look for a special newsletter at the end of January with more details about the process prepared by Bernice Hamel, the SHCA Preservation Committee, and the Preservation Alliance, with assistance from the Historical Commission staff.

Zoning And Development

Norman Tissian has written a memo to Randall Baron, Architectural Committee, Philadelphia Historical Commission, regarding Greater Media Cable's request to place ten large cable boxes at each of the following locations: Front and Lombard, 100-110 Spruce, 2nd and Lombard, 2nd and Spruce, 3rd and Walnut, 4th and St. James Place, 6th and Locust, 6th and Pine, 6th and Spruce, and 8th and Pine Streets.

SHCA opposes these boxes until we have a better understanding of the "need" from Greater Media Cable. All prior discussions with GMC and our agreement that they have cable rights in Society Hill was based on the premise that all wiring would be under the sidewalks or streets. These boxes violate this agreement. Norman has asked that the Philadelphia Historical Commission deny their request to proceed until they appear before our Board of Directors.

Richard Bost reports on the following: Neighbors of the owners at 222 Delancey Place did not oppose a variance for an addition in the rear, which would reduce the amount of open space by a small percent. Neighbors at 5th and Manning Walk supported a variance for the Philadelphia Sports Club with the following provisos: the size of the signs is limited; signs may not be illuminated; and the variance goes with this health club ownership.

Neighborhood Pride

Martha Levine is continuing to assist homeowners find contractors for house projects with a list of contractors who

**Membership Drive Starts Now
1000 Members
by Year 2000**

This issue of THE REPORTER launches the 1999 Membership Drive. Please take time to read the enclosed brochure about SHCA membership, fill out the form, write out your check — adding something extra for projects that you care about — and send it in today!

have been highly recommended by other Society Hill neighbors. Since March 1998, 150 households have received the list, which includes categories for carpentry, painting, roofing, electrical, plumbing, millwork, masonry, ironwork, floor finishing, HVAC, brickwork, window washing, antique mantels, antique, repro and contemporary lighting, window treatments, and security systems. For a copy of the list, call Martha at 215-629-0727.

SouthStreet/HeadHouse District

The Zoning Commission has unanimously approved all variances for the Fresh Fields to proceed with development of the 900 block of South Street. Several interested parties have taken legal action to overturn the approval, which has upset those strongly in favor of the high-end grocery store. STAY TUNED!

Welcome Committee

Since **Martha Levine** started the Welcome Basket program this past year, another 35 baskets have been delivered to new Society Hill homeowners. She reports many have become members of the SHCA. Please patronize the merchants who donate goods and services to the baskets, Zeke's Deli, Baker Street, SuperFresh, Lore's Chocolates, Old City Coffee, Chef's Market, Shane's Candies, Starbuck's Coffee, Riff Cleaners, Dickens Old Curiosity Shop, and Pink Rose Pastry Shop.

Public Safety

Barbara Gelman now gets the crime statistics for the area, but at the request of the police commissioner is not making them public until the reporting controversy is resolved. Their next meeting will be on February 7 to analyze the statistics, formulate ideas for reducing the most common crimes, and plan a presentation to the Sixth Police District and mini station. Call the office for time and place.

Lt. Robert McCarthy of the South Street Mini-Station has written a thank-you letter for the \$500 donation from the SHCA to support the station.

Penn's Landing Liaison

Lorna Katz Lawson informs us that the Society Hill Towers management has received a letter from City Councilman Frank DiCicco with the most recent information about the development of the Penn's Landing Entertainment Complex.

1. In June City Council unanimously approved a Tax Increment Financing plan (TIF) for the Family Entertainment Center.
2. Penn's Landing Corporation and Simon Property Group (SPG) signed a lease for the site. The lease includes responsibilities and milestone dates.
3. SPG has signed a lease with AMC Theatres for a movie complex with 20 screens and 4,200 seats.
4. The Please Touch Museum has commissioned local architects Santos-Levy to design the new museum for the top level of the family entertainment complex.
5. Engineering plans for the Delaware Aerial Tram with a special effects lighting show are progressing.
6. Penn's Landing Corporation is moving along on parking and shuttle transportation plans.

As for the planned hotel south of this site, appeals have been filed by Society Hill Towers in both Federal and Commonwealth Courts.

4 AAAA Building & Design Consultants

(215) 829-1633

Interior-Exterior Design

Specializing in Structural Problems

- Cracks • Unlevel Floors
- Sinking • Leaks

Feasibility of Improvements

- Roof Decks • Additions
- Excavation • Multi-Family

AVIS

AVIS RENT A CAR SYSTEM, INC.

Rosemarie Weinberg

(215) 629-1333

(215) 928-1082

FAX (215) 627-0385

City Location

37 S. 2nd Street
(Between Market &
Chestnut Sts.)
Philadelphia, PA
19106

Monday-Saturday 8am- 7pm • Sunday 9am - 4pm

**PAPERWORK
WIZARD**

Assists with bill & claim problems

Organizes & develops paperwork systems

Rearranges use of space

Wordprocessing

Research assignments

Additional Services Available

215.923.1477

"The at-home personal business assistant"



LET'S TALK REAL ESTATE

By Lolly Crowther LaGreca

Selling your home or condo

My over twenty years experience as a Center City realtor together with the vast resources of Fox & Roach, the region's largest real estate company, means fast, easy access to prospective buyers of your home or condo. When you list with Lolly, find your property in Fox & Roach's regionally distributed publications — or on its World Wide Web site.

Thinking of buying

An active Center City resident, Lolly keeps a pulse on the city — what's happening and who's selling. Backed by Fox & Roach's comprehensive new listings database, Lolly will help you find your dream home or condo.

Relocating

For those new in town, Lolly makes Philadelphia feel like home. And through Fox & Roach's affiliation with the world-renowned Cendant Mobility Broker network, which relocates 100,000 employees from over 1,700 of the world's leading organizations each year, Lolly has the resources for making smooth transitions in Philadelphia.

For professional advice on all aspects of real estate, turn to Lolly Crowther LaGreca (215-790-5638). Twenty years experience in your community.



Fox & Roach Realtors

The Rittenhouse Hotel, Suite 406
Philadelphia, PA 19103

Tel. 215-546-0550

E-mail: lol@bellatlantic.net

Web: www.dream-house.net

•NEW OWNERS

•NEW SERVICES

•NEW APPROACH

Society Hill Realty Company, Inc.

206 South 3rd Street • Philadelphia, PA 19106

215.925.9403 • Fax 215.925.9661

THE PERSONAL SERVICE PROFESSIONALS
WHO OFFER YOU:

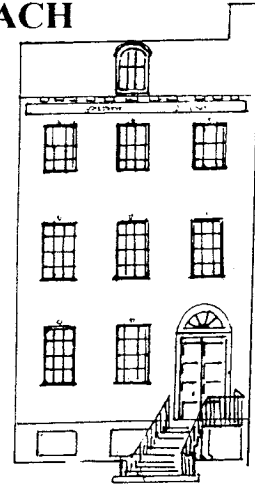
FULL SERVICE BROKERAGE
BUYER AGENCY
PROPERTY MANAGEMENT

PROPERTY MAINTENANCE-WHOLE HOUSE/ RENTAL UNITS
(By:Facilities Management Services)

TENANT SERVICES

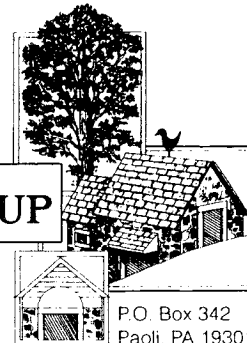
AVAILABLE

LANDLORD SERVICES



THE COLDSPRING GROUP

COLDSPRING DESIGN ASSOCIATES
Housewright Partners, Inc.



P.O. Box 342
Paoli, PA 19301

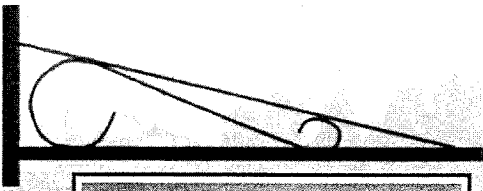
DESIGNER/ BUILDER

- HISTORIC RESTORATION • REPRODUCTION
- SUNROOMS & CONSERVATORIES
- ADDITIONS & RENOVATIONS

•PROPERTY MAINTENANCE-WHOLE HOUSE/ RENTAL UNITS
(By:Facilities Management Services)

(610)-296-3506

Fax: (610)-889-0489



FOR SALE

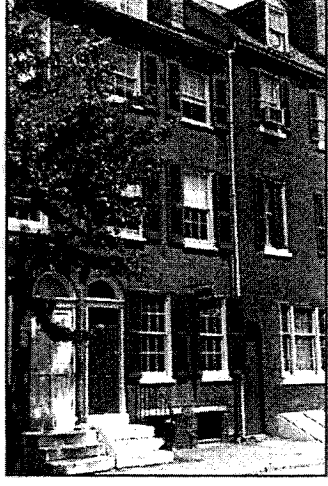
FOX & ROACH
REALTORS

www.foxroach.com
215-546-0550

Formerly  **midtown**
realty corp.

Formerly **Jackson-Cross**

This week's featured property



123 LOMBARD Historically certified, 4 bedrooms, 2 baths, original floors, fireplace, Charming garden, Very inviting. Come and see! **\$219,000**

SOCIETY HILL

- 327 SPRUCE** Exquisite Federal Townhouse. Gourmet kitchen, master bedroom suite plus 4 additional bedrooms, 4.5 baths, library and garden. All new mechanicals, pristine condition. **\$865,000**
- SOCIETY HILL** Fine quality contemporary, 4 bedrooms, 3.5 baths, living room, dining room, eat-in kitchen, Library, family room, deck, garden, 2 car Parking. **\$825,000**
- 516 SPRUCE** Elegant light-filled Federal mansion 5 bedrooms, 5.5 baths, large garden, elevator, 2+ car GARAGE, separate suite in basement with street access. **\$790,000**
- 316 S. FRONT** Fantastic contemporary home with soaring spaces. Full of light and drama! 3 bedrooms, 4 baths, separate dining room, huge Kitchen, garden MULTI-Parking! Just Fabulous! **\$685,000**
- 116 SPRUCE** Remarkable contemporary Society Hill Townhouse, 3 bedrooms, 3.5 baths, Large Kitchen, garden, fireplace, dramatic living room space/den. with media 3.6 center, 2-3 car GARAGE Parking, marble & hardwood floors. **\$599,000**
- 525 DELANCEY** Newly renovated Historic townhouse, 4 bedrooms, 3 baths, high ceilings, 2 fireplaces, fabulous gourmet kitchen. **\$550,000**
- 213 DELANCEY** Traditional 3 bedrooms, 2.5 baths, Separate, dining room, fireplace, garden, deeded PARKING, Pristine Condition! **\$379,000**
- 801 LOMBARD** 4 bedrooms, 2.5 baths, family room, fireplace, Euro kitchen, hardwood floors, garden, GARAGE. **\$249,000**



RELOCATION SERVICES DIVISION
Our 35-member, professional team generates over \$500 million in sales annually. When you need to relocate, we stand ready and able to sell your home and find you a new one quickly and easily.

At The Rittenhouse
210 W. Rittenhouse Square
Philadelphia, PA 19103 (215) 546-0550

An Exclusive Affiliate
SOTHEBY'S
International Realty

Society Hill Fund Seeks Neighbors' Input

The concept was that if a group of residents wanted to do something for the community, they could present the idea to the Trustees of the Society Hill Fund; and if approved, funds could be raised for that specific purpose.

If you have identified a need, a program, event or improvement that you would like to see in Society Hill, the Society Hill Fund has the means of implementing it.

The Society Hill Fund was established in January 1969 as a 501 (c) 3 organization to help support activities and programs that could benefit the neighborhood.

The concept was that if a group of residents wanted to do something for the community, they could present the idea to the Trustees of the Society Hill Fund; and if approved, funds could be raised for that specific purpose.

Once the Trustees approved a project, the project organizers would solicit contributions to the Fund designated for the specific project. In addition, undesignated contributions could be accepted for use for other public purposes consistent with the Fund's 501 (c) 3 status. Examples might include sidewalk cleaning, tree planting and maintenance, security lighting in public places, bicycles for the police, and so on.

Any money contributed to the Society Hill Fund is tax deductible. The Fund is not affiliated with the Society Hill Civic Association, although goals may overlap.

Early activities sponsored by the Fund include helping neighborhood sports teams at Starr Garden, providing free outdoor concerts, the Historic Properties Survey, pre-incorporation support for the Head House Conservancy and the Sidewalk Sweep program.

Current trustees are **Mel Buckman, Rody Davies, Howard Sedran, Dave Stevens, and Becky Stoloff**. Any of them are available for questions.

Contributions can be sent to The Society Hill Fund, c/o Rody Davies, 32 Strawberry Street, 3rd Floor, Philadelphia, PA 19106. They are looking forward to hearing from you.

— Mel Buckman

PhilaDeli

- delicatessen
- restaurant
- informal catering
- box lunches

410 412 SOUTH ST., PHILA. PA 19147-1535
215-923-1986 FAX 215-923-2299



Society Hill Towers Plaza
257 Saint James Place
Philadelphia, PA 19106

TRAVEL ANYWHERE

API Member
The Nation's Premier Travel Consultants™

215-923-4300 • 800-523-1650
Monday - Friday 9-6 • Saturday 11-3 pm



Quality Travel Services
for
31 years



Your Neighborhood Real Estate Broker With 75 Years of Service To the Community Specializing in:

- Residential Sales
- Property Management/Rentals
- Investments
- Commercial
- Relocation



EQUAL
HOUSING
OPPORTUNITY

A Trained Staff of Agents with
a Commitment to Service

realtors **plumer &**
associates, inc.

922-4200
226 South St.

Lights On For Safety!

Society Hill has taken on a brighter look in recent months. As a result of an ongoing, neighborhood-wide lighting project, many homeowners are making the neighborhood safer by turning on their front door lights every evening, and over eighty neighbors have installed timers to turn their front door lights on and off for them.

Security experts overwhelmingly agree that adequate lighting is the number one deterrent to crime — and it is something we can control. Franklin lights give only 50 watts of high pressure sodium light, an amount insufficient to light our streets. Pockets of darkness exist on every block due to widely spaced lamp posts. A plan with Philadelphia's Street Lighting Department to upgrade all Franklin light to 70 watts is in progress. Nonetheless, we need to supplement street lights with an exterior front door light on every house, every night. A 60-75 watt bulb should be used.

A timer is important for a number of reasons. First, people often forget to turn their light on and off. Second, many people get home after dark so no lighting exists for a period of time. Third,

some people travel and therefore cannot control the lighting (leaving the light on day and night is a signal that you are not home). The SHCA Lighting Committee is enlisting neighbors to sign up for a scheduled timer installation at a very reasonable cost. Every Thursday, Archer Electric will provide an electrician to install timers and repair or install light fixtures from 8:00 a.m. to 6:00 p.m. To arrange for an appointment or for additional information, call Martha Levine of the Lighting Committee at 215-629-0727. Twelve to sixteen households can be serviced each Thursday. Because it is very difficult to hire an electrician for such a small job, please take advantage of this service.

If you decide to use a timer, here are some useful hints:

1. Use the maximum wattage your fixture will allow (normally 60-75 watts).
2. Clean your lantern glass for optimum brightness.
3. Reset your timer to adjust for shorter and longer hours of daylight.
4. Reset the timer when the bulb burns out (it's easy!).

— Martha Levine

Keeping an outdoor light on at night will add only 13 cents per day to your electric bill. This project requires a group effort, so please do your part to help keep our neighborhood safe!

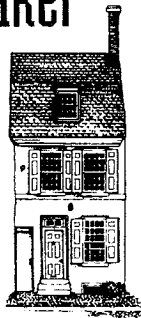


**Your Realtor® For
Buying A Home
& Selling A Home**

B a r i S h o r

"Real Estate® MatchMaker"

- Bari works harder.
- Works smarter.
- Cares and *delivers* on your Center City Home Ownership dreams.



**Call me, Bari Shor, 215-790-5678
Fox & Roach Realtors®**

At the Rittenhouse, 210 W. Rittenhouse Sq., Philadelphia, PA 19103 215-546-0550

Be Your Own Best Friend.

**Lose Weight
Prevent Bone Loss
Improve Cardiovascular Fitness
Increase Strength and Flexibility**

.. and Do It In Your Own Home

RICHARD GIBSON

Certified Strength & Fitness Trainer - References Available

215-923-6435

Specializing in Fitness for Older Adults

Society Hill and Washington Square's Premier Condominiums

NOW AVAILABLE FOR SALE

Society Hill Towers

200-220 Locust Street

One bedroom, lower floor, city view, 725 sq. ft.-\$85,000

Two bedroom, lower floor, townhouse views-\$165,000

Two bedroom with city views
SOLD
\$169,900

Hopkinson House

604-36 S. Washington Square

Studio on a lower floor, park view-\$57,500
SOLD

One bedroom, park view-\$97,500

Two bedroom, south view, 1200 sq. ft.-\$162,500

Independence Place

233-241 S. 6th Street

One bedroom, high floor, south view- \$142,500

NEW! Two bedroom, high floor, park & skyline views-\$298,000

Large 2 bedroom, 2 bath balcony, wrap around views of river, bridge and city, hardwood floors, 1897 sq. ft.-\$399,900

NEW! Three bedroom, 2 ½ bath, formal dining room, river views, balcony, hardwood floors, 1961 sq. ft.-\$550,000

Pier 5

7 N. Columbus Blvd.

NEW! Two bedroom + den, bridge and river views, 1 car parking included, deck, fireplace-\$279,900

NEW! Two bedroom + den, bridge and river views, upgraded hardwood floors, custom window treatments, in excellent condition, 2,229 sq. ft.- \$325,000

Three bedroom, panoramic river view from end of the pier, 1 car parking included-\$475,000
SOLD



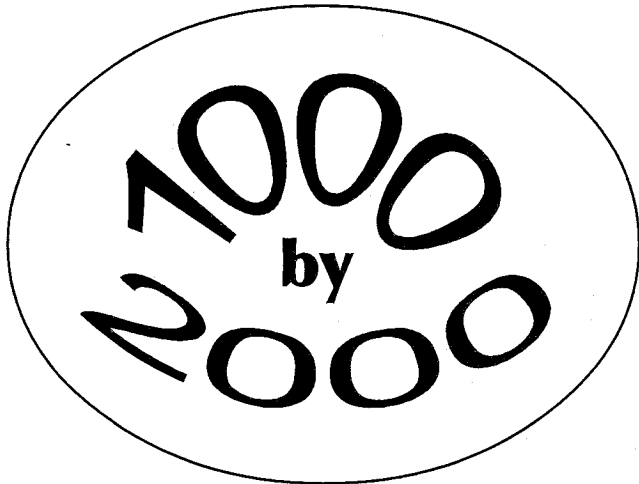
Allan Domb Real Estate

Philadelphia's Largest Luxury Condominium REALTOR®

Telephone: 215-545-1500 Fax: 215-545-1090

1608 Walnut Street, Suite 1303, Philadelphia, PA 19103

Internet Address: www.allandomb.com



The Lighting Committee is negotiating with the Streets Department to install two test blocks with 70 watt and 100 watt Franklin Lamps. We will notify you of their location. Please take a look and voice your opinion as to what you prefer: 215-629-1288.

Things To Do At The Down Town Club

- Have A Romantic Wedding Reception
 - Hold An Important Business Meeting
 - Celebrate Your Birthday In Style
 - Herald A Festive Holiday Party
 - Enjoy The Best View In The City
 - Toast Your 25th Anniversary
 - Shop For Wedding & Corporate Gifts
- At "Endearments" Gift Boutique
(by appointment only)

Think of The Down Town Club Catering & Conference Center For Your Next Special Occasion or Corporate Event.

Call For A Personal Tour Today!

(215) 925-2040

<http://www.downtownclub.com>

S.W. Corner of 6th & Chestnut Streets, Philadelphia, PA 19106

Bob and Annette Linck

All the world's a stage, wrote Shakespeare, and for Bob and Annette Linck those words ring resoundingly true.

The couple, married almost 40 years, first met when he was the leading man, and she the ingenue, in the stage drama *Portrait in Black*. In the intervening years they have retained and fostered their love of the stage — Bob serving as a director of the Wilma Theater, and Annette as an “acting” coach to guides at the Academy of Music and as president of the Cushman Theatre Club, Museum and Library. The Club, founded in 1907, is named for Charlotte Cushman, a noted nineteenth-century American actress who dreamt of safe,



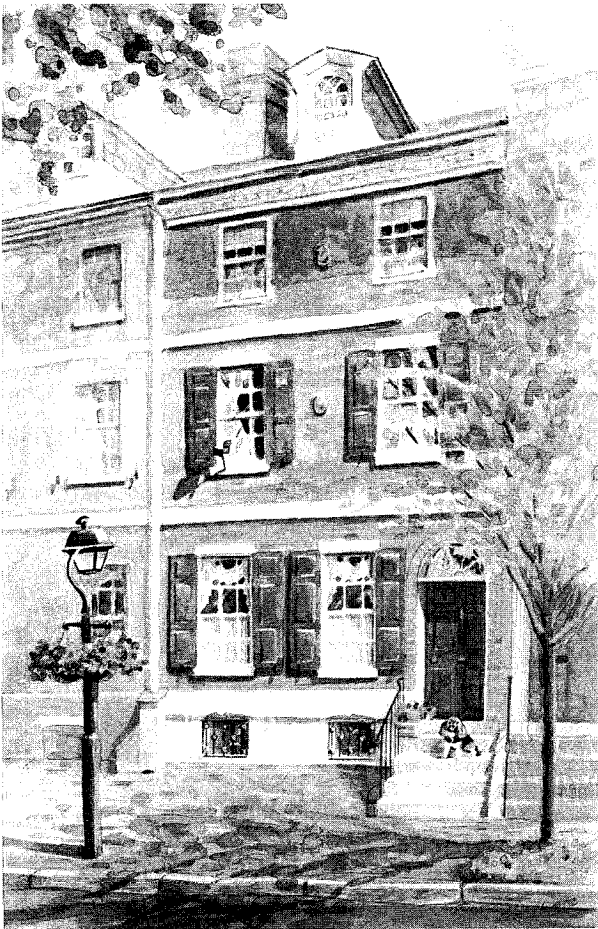
clean boarding houses for actresses, where they would not be harassed by “drummers.” Today the Club grants scholarships to theatre majors enrolled in local colleges, maintains a theatrical research library and hosts receptions for visiting theater groups.

And if, as Shakespeare went on, all the men and women are merely players, “they have their exits and their entrances,” Bob Linck has assuredly conducted his roles at dizzying heights. An Air Force pilot who retired with the rank of Lieutenant-Colonel, he has also been a member of the American and Canadian Alpine Clubs, and has scaled the Matterhorn. At lesser altitudes — but still way off the ground — he has spent an entire career as a civil engineer and third generation roofing expert. Among the buildings that he has, as he puts it, “helped people keep water out of,” are the Basilica of the National Shrine of the Immaculate Conception in Washington, New York’s City Hall, Ontario’s Legislative Assembly, and the Walnut Street Theater.

Sitting together on a sofa in the living room of the townhouse off Washington Square that they’ve lived in since it was built in 1965, Bob and Annette enthusiastically enumerate each other’s accomplishments. But the one they seem most proud of is their joint production — their two children, Vanessa, 37, a San Francisco lawyer, and Rob, 36, a New York stockbroker. Annette displays both her Spanish-Italian heritage and her theatrical background with elegance, expressive hand gestures and word-perfect diction. Bob — craggily handsome in his mid-60s — still plays the leading man.

Longtime members of the Society Hill Civic Association, the pair talk about their roles in the successful efforts to deflect the ramps from Highway I 95 onto Delaware Avenue instead of flooding traffic into the Society Hill area. They agree that, yes, you can fight City Hall. Even though both try to spend some time in the summer at their house in Ocean City, NJ, retirement isn’t in the script. Just as when they first met — the play’s the thing and boosting Philadelphia and its theatrical presence a continuing passion.

— David Wood



Townhouse, Society Hill, watercolor 1998

A PORTRAIT OF YOUR HISTORIC HOME

by Award Winning Watercolorist

PAMELA SINKLER-TODD

Enjoy a beautiful, personalized work-of-art that will become a cherished heirloom for generations.

Call and discuss with Pamela how she can turn your home into a masterpiece.

A color brochure is available on request.

Phone 215-925-0646

Fax 215-925-1762

www.mindspring.com/~pamelatodd

The Society Hill Story

As Plain As The Pane On Your Facade

SHCA offers a window pane at NO CHARGE to all members and new residents. There is a \$10 charge to non-members. Contact Matt DeJulio at 215-574-0372. He will look up the vintage of your house in our historic register and provide you with a pane within 15 days.

Haven't you ever walked down a street in our neighborhood and novelized about the people who walked the same streets during the early days of the founding of the greatest democratic republic in the history of mankind?

What sights were they seeing? What was the fabric of the streetscape?

Very few communities in our nation can boast virtually the same look as it appeared almost 200 years ago. Don't you ever get the urge to go back to your history books to find out why there are so many rows of 1804-1810 structures and then a big gap until the decade of the 1830s? (Post Louisiana Purchase euphoria followed by War of 1812 Scare). What was going on in the young days of our nation when Jackson was fighting with the latter day Federalists (by then the Whigs) who were moving ahead with a censure. Wasn't there a Panic of 1837 or was it 1827?

Would this have anything to do with how many and how grand the new structures would be which were constructed by the nouveau riche merchants and builders as they forged a new nation here in their safe, cozy homes as well as in virgin, forbidding territories to the West.

Philadelphia needs tourists. Tourists need your help. Help them evoke America's history by filling in the gaps in their understanding of our community's fabric.

If you live in an historic townhouse and do not have a window pane showing the date it was built, by whom or for whom, and in what style, now is the time to act.

Built circa 1825
for Robert Kid,
Merchant, in
the Greek
Revival Style

Sample Window Pane



The Award Winning Team of

MIKE McCANN

"The Real Estate Man"

The Ultimate in

Real Estate Service

★★★★★

NEW EXCLUSIVE LISTINGS:

Call for an appointment to see:

237 Pine St- Restored 20 foot wide Federal period home. 3/5 bdrms, 2+ baths, pine floors, C/A. 3 f/p. Library, deck, yard. \$550,000

99 Pine St- (344 S. Front St) Corner home, 4 bdrm, 3.5 baths, 3 wood-burning f/p, garage, 2 car parking, great river views. Location! \$465,000

403 S. 3rd St- Triplex! Owner occupied. Lots of character. Separate electric meters. 1 one bdrm, 1 two bdrm, 1 bi-level two bdrm. Laundry. \$375,000

337 S. 6th St- Renovated 4/5 bdrm, 2 baths, 3 f/p, pine flrs, new kitchen, garden \$399,900

715 Lombard St- Dramatic 3 bdrm, 2 dens, brick garden, 2.5 baths, parking, c/a, h/w \$219,900

7th & Addison- Charming 2 bdrm, 1 bath home. Hardwood floors. Skyline view! \$115,000

★★★★★

JUST SOLD! JUST SOLD!

702 Pine \$750,000★ 506-08 S. 8th \$315,000

434 Pine \$405,000★ 530 S 2nd 736 \$182,000

522 Pine \$350,000★ 530 S 2nd 805 \$120,000

617 S. 7th \$187,500

★★★★★

SELLERS WANTED!!

The real estate market has changed! We have more Buyers than Sellers! Call now to sell your home with the Top Team in Philadelphia!

★★★★★

CALL MIKE McCANN

★★★★★ and his 5 Star Team!★★★★★

PRUDENTIAL PREFERRED

215-627-6005★215-440-8345

Car Hits Tree

Automobiles hitting trees as a headline does not have the impact of "Man Bites Dog," but it has quite a negative impact on the tree.

Cars and trucks ramming trees or just slamming their doors into them represents a leading cause of tree loss for this neighborhood. Prompt attention to the street tree can help it survive a major hit.

Assist the tree's natural recovery mechanisms by cutting away any loose bark. An Exacto knife is best — with a new blade, not the one hanging around in the knife drawer since your adult son was in the fourth grade. A sharp penknife will do — and justifies keeping it since you were in the fourth grade.

After the excision, file the bark smooth to an angle against the exposed wound. A fine metal file is good or a coarse emery board will do the job. Given this tender loving care, the bark will grow across the wound and the tree will heal itself in time. Information from the *Morris Arboretum Mature Tree Symposium*

If a car hits your tree, get the insurance information. Replacing a mature tree with a new one is around \$320, and a mature tree is worth a lot more! Any severe hit significantly shortens the longevity of a tree whenever the bark is stripped from a quarter or more of the circumference of the trunk.

— Cherry Bombeck

Can Society Hill Establish a Charter School?

Their proposal for the Independence Charter School was recently awarded a \$25,000 planning grant, one of only 33 recipients statewide.

Over the summer, a group of neighborhood parents concerned about educational opportunities in the city proposed to establish a charter school, or independent public school, in the area.



Their proposal for the Independence Charter School was recently awarded a \$25,000 planning grant, one of only 33 recipients statewide.

This elementary

school, due to open in September 2000, intends to emphasize multi-lingualism and world cultures, and form strong ties with community organizations.

If you are interested in more information or wish to get involved, please call **Jay Borowsky** at 215-574-5708 or **Eric Cramer** at 215-627-0392.

“If you like saving money on car insurance, give me a honk.”

Before the cost of insuring your car leaves you a total wreck, give me a beep, a honk, or even a simple phone call. I'll work hard to come up with a quote that's just what you're driving at.

Allstate
You're in good hands.

We've gone condo.

Because you've gone condo. And your condo is your home. Like our homeowners insurance, our condo insurance is outstanding. From fire and smoke damage to theft, you're protected. Call today for the full story.

Jamie Matika, Exclusive Agent

Allstate Insurance Company

126 Lombard Street, Philadelphia, PA 19147

Bus (215) 413-5800 • FAX (215) 413-7038

**R. CHOBERT
PAINTING &
PAPERHANGING**

833 S 2ND ST PHILA

**MAY WE
BRING SOME
COLOR
INTO
YOUR LIFE ?**



(215) 389-7788

CREATING BEAUTY SINCE 1967

A Sports Club — Finally!

Philadelphia Sports Club, located next to Independence Place, at Fifth and Locust Walk, scheduled to open in January, 1999, is expected to be the most modern, state-of-the-art sports club in the Philadelphia area.

Town Sports International operates 76 clubs in the Northeast, from Massachusetts to Virginia. This venue is their first in Pennsylvania, and it is one of three locations planned for Philadelphia.

On the first floor of the 23,000-square-foot facility there are two aerobic studios, an outdoor swimming pool, tennis court (hooray!) and locker rooms providing steam and sauna baths. The second floor houses free weights, machine weights, cardiovascular equipment and TVs which will accommodate individual head sets.

In addition, there will be classes for yoga, boxing and body sculpting, fifteen personal trainers and massage facilities available for members.

Call about special pre-opening rates — 215-592-8900. The sales office is currently open from 11:00 AM to 7:00 PM. Bryan Bathey is stationed there to answer your questions and field your comments.

— David Brill

Open House SHCA & Philadelphia Sports Club

Thur., January 21

230 S. 5th Street

5:00 - 8:00 PM

Wine and Cheese

Mini Workouts & Demos

Dress Very Casually



Library Update

The Free Library of Philadelphia and a team from the City Finance Office are in the midst of negotiations with the Balch Institute for Ethnic Studies to secure most of the first floor of the Balch's building at 18 South Seventh Street. Everyone involved is excited about the selection of the Balch Institute site and working hard to reach an agreement that will allow the new branch to open as early as mid-1999.

If you haven't visited the Balch Institute lately, stop in to see where your new library branch will be. With ample first-floor space and the atmospheric conditions of a museum, the building is ideal for a library branch. And if you happen to see or communicate with Councilman Frank DiCicco, be sure to let him know how much you appreciate his work in getting the new branch established!

— Liza Seltzer

Trust your neighbors for your important insurance needs

Mather & Co., Insurance Brokers

—here in Society Hill for
over a century



Call us for answers about insurance
for your business, life, group health and
accident, boat, fine arts and jewelry,
and expensive home.

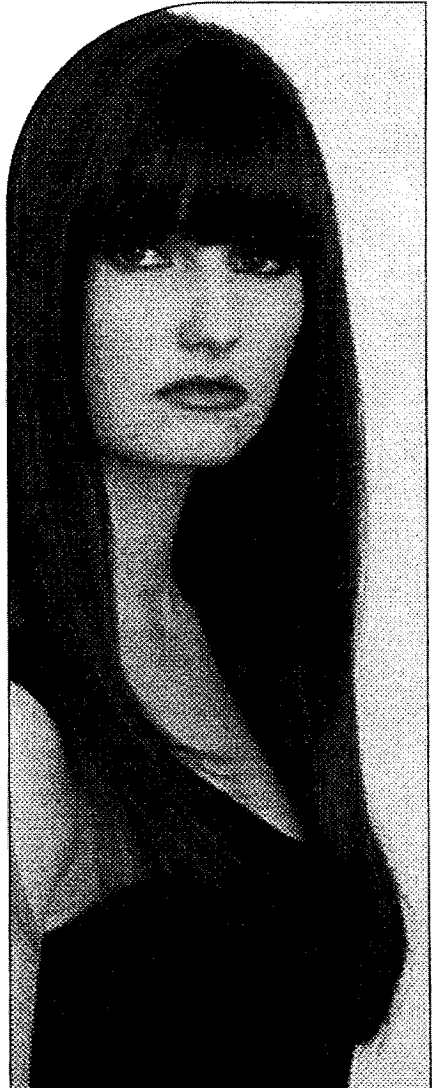


MATHER & CO.

226 Walnut St., Philadelphia, PA 19106

(215) 925-0118

*Trust our experience
as insurance brokers since 1873*



Pileggi

ON THE SQUARE
715-717 WALNUT ST.
215-627-0565

Giovanni & Pileggi

1701 WALNUT STREET
SECOND LEVEL
215-568-3040



Darts & Laurels



Laurel to Mother Nature for providing the picture postcard backdrop to the holiday season with a perfect dusting of white powder that disappeared in two days!

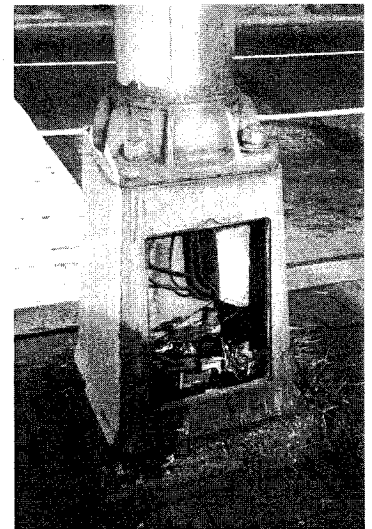
Laurels to all the neighbors who lit up the neighborhood with bright lights, candles, wreaths, garlands and a generally festive air. Bless all who had parties where we could indulge in alcoholic libations and safely walk home.



Darts to the drivers who have devised this innovative new form of physical therapy — have the patient dodge oncoming traffic while disembarking for the hospital visit. Surely with all those fine minds at Pennsylvania Hospital, they can come up with a better prescription for evacuating than this.

Darts to the Streets Department for this ingenious rodent electrocution chamber.

While we haven't seen any mice scurrying the streets lately, we are somewhat fearful for small pets and curious toddlers.



Dart to the thirty something-year-old white male in the red jacket (no kidding and no white beard) who was stealing the wreaths and garlands in the neighborhood.

SHANNON

FITZPATRICK
APPRAISER - GEMOLOGIST - GIA

- INSURANCE REPLACEMENT APPRAISALS
 - ESTATE APPRAISALS
 - GEM AND METAL IDENTIFICATION
 - DIAMOND AND ESTATE BROKERAGE
- 716 SANSOM STREET
SUITE 1
PHILADELPHIA, PA 19106
215-922-0607

Appraisals

Complete Fine Arts and Household
Appraisal Service for Insurance,
Estate Liquidation, Sales and Gifts.
Flat Rates.

For Information Please Call 242-0375

CHANDLEE & BEWICK

7811 Germantown Ave., Chestnut Hill
Philadelphia 19118

WM. H. CHANDLEE III

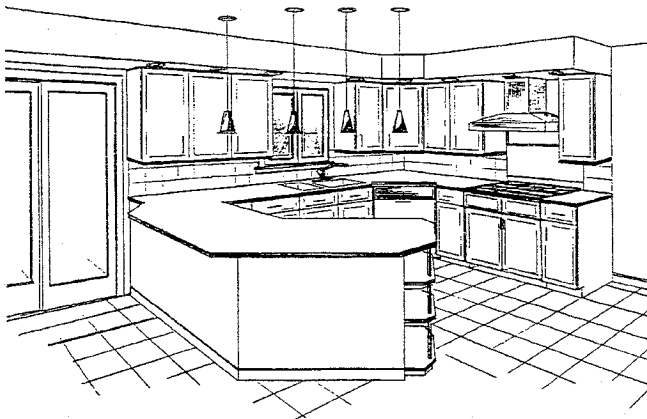
*Member of The Appraisers Association
of America*



River View Deli
RESTAURANT
(215) 334-4647

We're
NEW

1100 South Columbus Blvd. (AKA Delaware Ave.)
We offer over 50 Varieties of Beer. Eat-in Take-out!
Breakfast, Lunch & Dinner Specials- Great Corned Beef!



J&L
Designs Unlimited, Inc.

J&L Designs Unlimited's expertise includes:

- Complete interior design
- Kitchen and bathroom planning
- Custom built-in furniture and closets

We offer design through construction services on every project.

215-355-7237 • fax 215-322-7809

Maintaining the Quality of Life We Have All Come To Expect in Society Hill Does Not Come Easily!

Thus reads the title of our membership recruitment brochure for 1999.

Yes, it's time to renew or join for the first time. And this coming year, more so than in the past 30 years I've lived in Society Hill, are there so many threats to our quality of life.

Our recruitment brochure this year discusses in detail the various activities of the Society Hill Civic Association. Please look at it! I'm sure you will have to agree that as a resident, house or high rise, many of our activities have a direct impact on you. If you haven't received a brochure in the mail, then please look for a copy in this issue of *The Reporter*.

We need you to be a member! The cost is \$40 per household for the year — about the same as a movie and pizza for two. If the cost is still high for you, then send us what you can, with a note explaining, and we'll accept you as a member.

This year we especially seek members from the three high rise condo developments — Society Hill Towers, Independence Place and Hopkinson House. **High rise residents are 50% of our community, but less than 15% of our 1998 membership.** We have greatly increased high rise representation on our board. There are now eight board members from the three complexes. We want the board to represent all of our community and if high rise residents have dif-

ferent issues than house residents, we are insuring you will have a strong voice.

In 1998 we achieved 700 members from a potential of 3,000 households.

In 1999 our goal is 1,000 members.

We believe there is strength and, frankly, clout, in numbers.

When we call the City's Streets Department or Licenses and Inspections, or Zoning, which we do regularly, **we need membership numbers** to get a positive response.

When we invite all candidates for Mayor to appear together at our general membership meeting in March, **we need membership numbers** to insure their appearance.

The brochure discusses our activities but it doesn't identify the dozens of your neighbors who devote time, energy and thought as volunteers to maintain and improve our neighborhood.

If you wish to get "active," we welcome you. If you would like to be a board member, we do have openings now.

Please, now, take the time to **fill out the membership form and send us your check.**

I look forward to meeting you at our general membership meeting on January 20.

— Norm Tissian

1000 members by year 2000.

Make it happen.

Mail the enclosed brochure today with your check.

If the brochure is not in this newsletter, call SHCA: 215-629-1288 for a copy.