

Foxwoods at the Gallery: Gambling on Philadelphia's Future?

Will the decision to legalize slots gambling have a positive economic impact on the state or be a net negative?

Zoning for the Foxwoods casino, proposed for Market Street at The Gallery, was recently signed into law by Mayor Nutter in November. The Mayor's signing followed a one-day hearing before City Council's Rules Committee on November 1st — when civic organizations, schools, and community leaders from a variety of neighborhoods, including Society Hill, testified overwhelmingly against the passage of this zoning legislation. Normally, a city planning process occurs prior to the issuing of zoning for any development that is expected to have wide-ranging impact. Instead, the city has assured citizens that a planning process will occur *after* Foxwoods presents its development plans, which, as of this publication date, has not occurred.

After City Council passed the zoning legislation, a group of community and religious leaders hand-delivered to Mayor Nutter 25,000 signatures opposing Foxwoods' Market Street location for a 5,000-machine slots parlor in the heart of Philadelphia. Ours is the only major American city other than Detroit that permits gambling within its center. However, Detroit's gambling venues are restricted to the city's non-residential downtown area, and so cannot be compared to Philadelphia's densely populated Center City.

As you may know, the newly selected Gallery site, on Market Street between 10th and 11th Streets, is immediately adjacent to Philadelphia's Chinatown — one of the city's oldest immigrant neighborhoods in which about 5,000 residents live — 1,000 of whom are children. Following the November 1st City Council hearing, Chinatown's leaders met with Mayor Nutter urging him not to sign this zoning legislation into law due to their concern about the high incidence of gambling addiction within the Asian population. However, in spite of fears voiced by many citizens regarding the actual cost of gambling (both monetarily and socially) in relation to its purported financial benefits, it appears at this time that the city is hurtling headlong in that direction — thus gambling on its own future!

Meanwhile, the *Philadelphia Inquirer*, in its November 30, 2008 editorial, questioned "whether the decision to legalize slots gambling will have a positive economic impact on the state or be a net negative." The newspaper's editorial board cited the current national economic meltdown across all sectors of society, which is causing casino operators to declare bankruptcy, lay off hundreds of employees, and halt planned

continued on page 8

WED.

January

14

MARK YOUR CALENDAR

Society Hill Civic Association Meetings
Wednesday, January 14, 2009

Old Pine Street Church: 412 Pine Street

- 6:00 p.m. Board of Directors Meeting**
All SHCA members are welcome.
- 7:00 p.m. Meet & Greet Your Neighbors**
- 7:30 p.m. General Membership Meeting**
All neighborhood residents are invited to attend.

Featuring Guest Speaker Cynthia MacLeod, Superintendent, Independence National Historical Park

Introducing Independence Park Superintendent Cynthia MacLeod

We are delighted that Cynthia MacLeod will be the featured speaker at our association's first General Membership Meeting for the year 2009. Superintendent MacLeod began her position as the park's director last February, replacing former director Dennis Reidenback who is now serving the National Park Service (NPS) as its Northeast Regional Director.

Prior to her recent arrival at Independence Park, Cynthia MacLeod served as Superintendent of Richmond National Battlefield Park, where her

continued on page 3



mw design group, llc

artifacts ~ garden design ~ inspiration

mwdesigngroupllc.com

mike waddell ~ 267.872.8814



SOCIETY HILL

Reporter

Managing Editor

Bernice T. Hamel

Editorial Board

Marilyn Appel
 Lenore Hardy
 Marion Immerman
 Lorna Katz Lawson
 Carole Le Faivre-Rochester
 Martha Levine
 Rosanne Loesch
 Sandra Rothman

Columnists

Marilyn Appel
 Jane Biberman
 Richard de Wyngaert
 Sonia Grasse
 Martha Levine
 Catherine Signorello
 Frank Signorello

Contributors

Sissie Lipton
 Tania Rorke

Graphic Design

judy@parallel-design.com

Press Release Liaison

Sandra Rothman
 315-C S. 2nd Street
 Philadelphia, PA 19106
 e-mail: norfad@aol.com
 tel: 267-671-0554

Advertising Manager

Matthew DeJulio
 mattdejulio@aol.com

**Society Hill
 Civic Association**

P.O. Box 63503
 Philadelphia, PA 19147
 tel: 215-629-1288
 fax: 215-629-9914

Submission Deadlines

March/April issue
 Advertising:

February 1
 Editorial:
 February 10

Website

www.societyhillcivic.org

Note

Due to a scheduling conflict, David Woods was unable to interview a "Noteworthy Neighbor" for this issue. Look for his column to reappear in the March/April issue.

Submissions

We want to hear from you. Our goal is to print news of interest to Society Hillers – happenings in and around our community for residents, business people and professionals. Direct your editorial submissions and/or queries to Bernice Hamel via fax at 215-925-0877 or e-mail BerniceHamel@comcast.net. To publicize an event, submit all press releases directly to Sandy Rothman. (See contact information above.)

Materials must be submitted in writing – via mail, e-mail, or fax – and must include the name of a contact person. Edited submissions will be considered for publication if the subject matter is community-related and if space allows. Otherwise, upcoming events of interest may be listed in the Community Calendar. Letters to the Editors will be considered for publication only if signed and the writer provides contact information.

In this Issue...

Page 4

Invasion of the Monster
 Controller Boxes

Page 5

Spruce Street Traffic Alert

Page 7

Society Hill's TownWatch

Page 11

Safe and Sound in Society Hill

Page 15

Kids' Life in the City

Page 16

Accidental Tourist:
 The Athenæum

Pages 23-30

"Resource Guide" with contact information for a range of local services. Save these pages for future reference.



WEIXLER PETERSON LUZI

EXCEPTIONAL INTERIORS • EXTRAORDINARY LIVING

215 • 592 • 9570 www.wplinc.com

P R E S I D E N T ' S M E S S A G E

RICHARD DE WYNGAERT, SHCA PRESIDENT

*"If you are unfaithful with us,
you're causing terrible damage."*

- Rumi

As we begin a New Year, the notion of resolutions, introspective acts and change loom large. Most of us have, or will, examine various aspects of our lives and with varying degrees of commitment promise to make some improvements: perhaps learning to speak a new language; eliminating a vice; exercising more regularly; finding more balance; and staying organized and more efficient when managing our time. All worthy and admirable resolutions for individuals.

In addition to our personal resolutions, dramatic changes are reshaping our communities, our nation and our world. From Wall Street to Capitol Hill, we are witnessing an almost tectonic shift that is reorganizing the fabric of our political and capital systems. The pace of change is dizzying and its nature, I believe, deep, fundamental and enduring. The tumult is redirecting our priorities. The way we live and the way we view our individual and collective responsibilities are evolving. In difficult and challenging times, we adapt and tap into a resourcefulness and a capacity to connect — which enables us to pull together gracefully to help one another.

I believe our nation is now reassessing what it values and how and where we spend what is left of our money. We are once again recognizing

the importance of community. And Society Hill is a great community, ultimately, because of the people who live here. We are fortunate to have so many residents who work tirelessly to make this a great place to live. But this needs constant tending. New ideas and fresh troops are always welcome, as there are countless opportunities to volunteer in ways that are aligned with your interests. For ideas about how you can become involved, please take a moment to visit the SHCA website — SocietyHillCivic.org — because volunteerism is inarguably one of the pillars of our community.

In the spirit of community, let's all try to do a better job of supporting our local businesses and markets, many of which are identified in the Resource Guide section of this issue, located on pages 23-30. These businesses enhance the caliber of our daily experience. A truly symbiotic relationship — because they cannot exist without our support, while our community would be considerably less without them.

I would like to thank all of you who have recently joined or renewed your SHCA membership. If you have not yet joined, please consider doing so. We need you. Together we can keep Society Hill strong and our community vital.



**Richard de Wyngaert,
President**

General Membership Meeting Guest Speaker Cynthia MacLeod

continued from page 1

role was to protect, preserve and interpret the cultural and natural resources of nine area sites related to the Civil War. She was also in charge of the Maggie L. Walker National Historic Site, which commemorates the life of the first African American businesswoman who rose to be a bank president.

MacLeod began her impressive career with the NPS as an architectural historian in several regional offices across the county. She completed a program at Harvard for Senior Managers in Government, and her diverse background

includes a Masters Degree from the University of Virginia, where she majored in both zoology and comparative literature.

We expect that Superintendent MacLeod will focus her presentation on several topics close to our hearts. These may include:

- INHP's new, improved and more welcoming security system;
- Improvement plans for Washington Square;
- Four new exhibits to launch the park's Centennial.

NEIGHBORHOOD IMPROVEMENT PROJECT?

Invasion of the Monster Controller Boxes

BY MARTHA LEVINE

 The Good,
 the Bad and
 the Ugly

The Good: As reported over the last six months, Philadelphia's Department of Streets has been proceeding steadily with its Southeast Quadrant Neighborhood Improvement Project — of which 80 percent is federally funded while 20 percent is funded by the city. Specifically, the scope of work is from Market to South Streets, and from Front to Broad Streets. The project's focus is to upgrade our traffic light signal system during which time sidewalks throughout Society Hill have been disrupted. Although many residents wonder if the project is needed — since ours is not a high traffic area — the positive aspect of the upgrade is that these are state-of-the-art, fiber optic traffic signals that will be synchronized to cut down on speeding and will be more easily maintained if or when they malfunction.



An example of the refrigerator-sized controller boxes appearing throughout our neighborhood. This big, brown box was recently installed at the S.E. corner of 5th and Spruce beside a Society Hill icon: the historical residence that proudly displays its 1770 construction date within its brick façade facing Spruce Street.

The Bad: Unfortunately, in order to install these new traffic signals, the contractors (Carr & Duff Electrical and Seravalli Contractors) excavated most of our streets to lay down the fiber optic cable that connects to these new lights. This process was not merely an inconvenience for residents. But rather, many streets became impassable, and in some cases personal autos were towed to nearby streets — with little or no warning to neighbors who were pressed to locate them.

Just when we thought the digging was completed, the contractors returned to excavate our neighborhood's brick sidewalks — to connect the street cable to the location of these new light poles. Outraged neighbors complained: "Where

did they take our treasured bricks?" After several e-mails and phone calls, we have received written assurance that the bricks have been tagged, kept in a safe place, and will be replaced in their original locations.

The Ugly: We like the good; we can put up with the bad (since it's only temporary); but here is the ugly part: big brown refrigerator-sized boxes have invaded Society Hill! No, they are not from another planet. A "controller box" has been placed at every intersection that has a traffic signal. Each of these boxes contains a large computer that controls the traffic signals — that's where the fiber optic cable connects from the sidewalk.

You may be wondering why the computer in each box is so large, since, these days, technological components are becoming more sophisticated and smaller in size. That's what representatives from both SHCA's Safe & Sound Committee and Zoning/Historic Preservation Committee have asked, when in early November 2008 we met with Councilman Frank DiCicco and officials from the Streets Department. Previously, we were told that the size of each controller box would be 4 feet high (48" x 24" x 28"), not close to 6 feet. To our surprise, the box now sits atop an 18-inch "skirt" box, which holds the cable wires. Apparently, these fiber optic cable wires require a certain turning radius — necessitating extra or additional space within the skirt box. We were not told about the size of these skirt boxes prior to the installation!

Our Efforts

After our initial shock at seeing the installation of the first few huge controller boxes in our community, many neighbors wondered how or why SHCA had not been informed prior to their arrival. After all, Society Hill is a certified Historic District, and supposedly there can be no alteration (whether major or minor) to the exterior of any structure that could affect the streetscape without first receiving official approval from Philadelphia's Historical Commission.

We asked officials from the Streets Department for a smaller, alternative device that would be more appropriate for our historic district, but were told that the project was planned three years ago, and therefore, "it is now too late in the game to make major changes." The key problem

CONTROLLER BOXES

continued from page 4

is that the city never consulted with or informed leaders of our civic association, as they should have done, during their planning phase. Instead, they determined that “one size fits all.” However, a device that could be suitable for a commercial district, such as South Street, is certainly not appropriate for Society Hill — one of the most historic residential neighborhoods in the nation!

Many residents have been complaining about the size, placement, and unsightly appearance of these big, brown boxes. There is also the threat that they will become a magnet for graffiti — which has already begun. We recently spoke with a “high official” from the Streets Department who is looking into the possibility of using a smaller skirt box that would reduce the overall size of each controller box by six inches. He said such a change would depend upon the availability of these new parts, as well as the contractors’ schedule. (By the way, the construction manager offered us “the choice” of whether a controller box should be placed next to and literally inches away from a residence, or next to the street curb. But he did not say we could select which corner would be preferable.)

There will be a price for this change, and we may need to foot the bill! However, Councilman DiCicco is supportive and has offered to help if we require additional funds for the cost of this alteration. It’s our only option. We hope to have a resolution sometime soon, but this newsletter will be published and delivered before we learn the answer. So, to remain up-to-date on Society Hill’s current “de-beautification project” or for more information, feel free to contact SHCA’s Safe & Sound Co-Chair, Martha Levine, at marthalev@msncom or 215-629-0727.

SPRUCE STREET TRAFFIC ALERT

Society Hill Towers has proposed traffic direction changes for autos exiting its garage on the 200 block of Spruce Street. All autos currently must head west on Spruce Street, a one-way street. The Towers’ representatives have suggested that traffic be changed to two-way on Spruce Street from the garage exit toward Columbus Boulevard. A committee of the Board of SHCA (George Kelley, Becky Stoloff and Matt White) will be meeting with representatives of the Towers concerning their proposal and hopes to have more to report to the community shortly.

PANORAMA
RISTORANTE

Contemporary Italian cuisine and over 120 wines by the glass every day.
Winner of The Wine Spectator Best of Award of Excellence. Private Wine Cellar and Reception Rooms available.

Ristorante Panorama at the Penn's View Hotel
Front & Market Streets Philadelphia, PA 19106

Restaurant Reservations
Call 215.922.7800

Complimentary Parking at Lunch

www.pennsviewhotel.com



THE MONSTER MINDERS
DOG WALKING & PET SITTING



\$25 OFF
YOUR FIRST MONTH
of weekly dog walks (with this ad)

- ☛ We offer the same care you do - Individual & undivided attention for your monster's safety and well being (No group/pack walks.)
- ☛ Client access to online scheduling tools and interactive calendars for peace of mind.
- ☛ Certified in Pet First Aid and CPR
- ☛ Bonded and Insured

We are honored to be awarded "Best of Philly" by *Philadelphia* magazine, and we make sure we live up to our name - Best Urban Pet Sitter 2006



"the city's best sitters"
Philadelphia HOME magazine
Winter 2008

www.TheMonsterMinders.com
Phone: 215-925-1119 Email: info@themonsterminders.com

SAINT PETER'S CHURCH
Philadelphia

3rd and Pine Streets
215.925.5968
www.stpetersphila.org

Children welcome and involved every Sunday!

For Infants & Toddlers

9am Our lively, music-filled Communion service for young children and families

For Pre-K through 6th Grade

10am Godly Play and Workshop Rotation: Children engage with the great stories of faith through play, games, drama, movies, and more

For 2nd through 12th Grade

Our renowned choirs for boys & girls offer a superlative music education



Open hearts. Open minds.

Valentine's Day Special



Lux
SPA & FITNESS

The most luxurious Spa in Society Hill.

Spa Amenities:

6,500 square foot Luxury Spa & Fitness Center
Spa with 4 Treatment Rooms
Private Spa Party Room
Aveda Retail Store
Personal Training
Heated Indoor Pool, Whirlpool & Sauna
Towel & Laundry Service

www.LuxSpaAndFitness.com

Prepare yourself for the ultimate in spa luxury.

Come experience a 3 hour indulgence of the senses with the lover in your life. The lovers get-away package is a couples 80 minute Arnica & Rosemary Muscle Melt Massage, a 50 minute Aveda Rose Custom Facial, served with champagne, cheese & strawberries all while enjoying our fabulous whirlpool & sauna.

Book your reservation today, it will sell out early.



OMNI HOTEL
AT INDEPENDENCE PARK

401 Chestnut Street Philadelphia, Pa 19106

215.931.4248

Preserving Philadelphia's Interior Treasures

The Preservation Alliance for Greater Philadelphia is requesting our support for a bill to amend Philadelphia's preservation ordinance to allow for the designation of an important public space within a building as a "significant interior." An example of such a proposed designation might be the lobby of Philadelphia's 30th Street Station. Another might be the lobby of the Curtis Center building (on the 600 block of Walnut Street) which is dominated by the magnificent glass mosaic "The Dream Garden," — designed by artist Maxfield Parish and produced by Louis Comfort Tiffany in 1916. It has been called "one of the major artistic collaborations in early 20th-century America."

Our civic association fully supports the amendment of this preservation ordinance to preserve the city's significant interior spaces. At SHCA's November Board of Directors meeting, the following motion was unanimously approved:

"The SHCA shall join with the Preservation Alliance to recommend approval of an amendment

to the preservation ordinance to designate significant historic interiors, and the SHCA will contact the Mayor and City Council directly to support Bill #080527."

Individuals are also being asked to help support this preservation amendment. To sign a petition, please visit the Alliance's website at action.preservationalliance.com/node/19.

And as the first phase of a multi-year project to create a preservation plan for Philadelphia and a citywide survey of its historic resources, the Preservation Alliance is currently gathering public opinion in cooperation with the city's Historical Commission and Planning Commission. It would be greatly appreciated if you could give 10-15 minutes of your time to complete an online opinion survey — as the results will help build a picture of the role that historic preservation plays in our city.

Go to www.surveymonkey.com/s.aspx?sm=Lm1R2TNYZhiIng5cUQNYQg_3d_3d.

Try it. Honest, it works!

Sign a petition to help support the preservation of important interior spaces within public buildings.

TOWNWATCH SWINGS INTO ACTION

On November 10th Society Hill's new TownWatch swung into action with patrols out most Fridays and Sundays since then. The City of Philadelphia contributed blue and yellow reflective vests to provide extra visibility — making patrollers and their canine companions a reassuring sight to neighbors and a possible deterrent to small-time criminals.

Patrols are currently scheduled for Wednesdays, Thursdays, Friday and Sundays — from 7:30 to 9:30 p.m., but many more volunteer patrollers are needed! While it's a great way to give the dog an outing, you don't need to have a pooch in order to make a difference.

Although at this early stage in our TownWatch operation the website is filled primarily with local weather and crime-related links, feel free to visit www.societyhilltownwatch.com. If you have any specific questions about our revitalized TownWatch program, or to sign up as a volunteer, please contact Co-Chairs Bruce Luckman at bluckman@mstkw.com or 215-575-7622 or Lea May at leaandchris@earthlink.net.

Bruce and Lea encourage everyone to take a turn — or at least give it a try. Please consider volunteering for one hour at a time or even just one patrol a month. It's good exercise, a good deed, and you might end up making some new friends!

TownWatch volunteers needed!

Patricia Bentz CPDT, CDBC
Certified Dog Trainer & Behavior Consultant

"Going to the Dogs"

K-9 Training & Behavioral Therapy

- One-on-One Obedience Training at Home
- Behavioral Consultation
- Puppy Head-Start
- Reward-Based Methods Only



(215) 551-5254

Queen Village

Hours by Appointment

Gift Certificates Available



Old Pine Street Presbyterian Church

Please join us for worship
Sundays at 10:30am
Nursery Care Available
Sunday School
Ages 3 - grade 8

412 Pine Street
215.925.8051
www.oldpine.org

Foxwoods at the Gallery...

continued from page 1

...it is "just a matter of time before the recession hits gaming in Pennsylvania."

Philadelphia Inquirer

expansion or building projects due to the loss of available credit. Foxwoods itself has experienced continuing fiscal woes this past year. After staff layoffs during the spring of 2008, Foxwoods laid off an additional 700 employees and eliminated its CEO position in September. To reduce even further their financial obligations, Foxwoods offered a "buyout" to its employees, in early December, with a mid-December '08 deadline.

The current shortage of credit financing has also threatened the construction of a slots parlor in Pittsburgh — to the extent that the original backer had to be bailed out by an out-of-state wealthy investor who happens to be a major backer of the SugarHouse Casino. One of the two licensed slots parlors for Philadelphia, SugarHouse, has been trying to locate along the Delaware waterfront, but continues to face permit and construction obstacles due to environmental and historic preservation issues. They also face ongoing opposition from the adjacent residential communities of Fishtown and Northern Liberties — only about a mile north of Society Hill.

In spite of current financial challenges across the entire country, both the State of Pennsylvania and the City of Philadelphia are counting on substantial revenues from gaming — an industry which in the past year has contributed \$786 million in statewide property tax relief to all counties except Philadelphia. But based on projected gambling revenues, all workers in the city are slated to receive a reduction in their wage-tax. For example, any worker earning an annual salary of \$50,000 will have his or her annual wage-tax reduced by \$120. However, the *Inquirer's* editors question if projected revenues will materialize, because they presume it is "just a matter of time before the recession hits gaming in Pennsylvania" —

especially "once the novelty of the slots parlors wears off." The editorial concludes that "the social ills of gambling will hit the poor and the elderly the hardest" — particularly because there is a high concentration of both in the city.

Many Philadelphians are, therefore, calling for true independent studies to document the actual costs of gaming — whether to the city and state or to individuals and families that collectively make up the very fabric of any community. Some citizens are skeptical about the results of what have been termed "independent studies." Obviously, the least objective studies would come from casino interests. For example, the Econsult Corporation, a privately owned firm, has conducted its own "independent studies" in support of the benefits of gaming, although these studies were paid for by its client, Foxwoods! Even the conclusions of studies performed by city and state employees should be questioned when the results support the benefits of casinos while downplaying their actual costs. In fact, city and state governmental entities have a true conflict of interest — given that both would be the beneficiaries of revenue from Philadelphia's casinos. In reality, the State of Pennsylvania is a major stakeholder in casino operations because, by law, it receives 55 percent of all casino profits. Any local municipality hosting a casino (such as Philadelphia) also receives a portion of those profits.

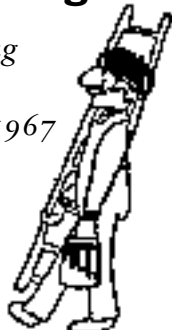
Similarly conflicted are non-governmental organizations in the city that have been asked to provide data on the risks and costs of gambling operations on the communities they serve. For example, independent mental health organizations are reluctant to express real concerns about the negative effects of casino gambling on their client population because most of these facilities receive a portion of their budgets from the city.

R. Chobert Decorating Co.

*Painting/Wallcovering
Interior/Exterior
Creating Beauty Since 1967*

Rupert Chobert

641 Reed Street
215.389.7788 TEL
267.977.7443 CELL
215.755.6655 FAX



Cosmos Fine Nail Salon

a nail salon
for men & women

Mon-Fri 9:30 am - 7 pm
Sat 9:30 am - 6 pm
21 South 7th Street
215-627-1020
1308 Sansom Street
215-545-5456

Foxwoods at the Gallery...

Such issues as these were raised at a diverse panel discussion on December 5, 2008, led by a coalition of student organizations at the University of Pennsylvania. The six-member panel included two proponents of casino gambling in Philadelphia — one a freelance journalist and the other a principal of Econsult Corporation. Rounding out the panel were a business reporter from the *Inquirer*, a University of Pennsylvania professor, a board director of Asian Americans United, and a co-founder of CasinoFree Philadelphia.

At this discussion the audience was reminded that Philadelphia is essentially a poor city, since the average annual household income is only \$34,000, and the majority of casino gamblers fall into this range or even below. One panelist spoke about the predatory nature of the gaming industry in general, which is known to target problem gamblers and profit from their losses. Another wondered if Pennsylvania will “actually deliver on the benefits of gambling” and whether the state will provide a “safety net” for the industry’s risks — e.g. addiction and increased crime. It was noted that the re-siting of Foxwoods to

Center City’s Market Street location is specifically intended to attract pedestrians and commuters through the public transit hub, as well as lure local workers who might be tempted to impulsively gamble during lunchtime or before and after work.

Several panelists concluded that what Philadelphia truly needs is real solutions in response to today’s severe economic slump — the most serious since the 1930’s Depression. Some on the panel bemoaned the cost of lost opportunities from the prolonged fight against these two slots parlors slated for Philadelphia. They called for the city to invest its time and energy in finding economic engines that will bring jobs and revenue without comprising the health and safety of individuals and neighborhoods. Our own civic association continues to focus its efforts on appropriate zoning and development — not only for our neighborhood but for all of Philadelphia — one of America’s most historic cities.

— *The Editorial Board*

Philadelphia truly needs *real* solutions in response to today’s severe economic slump.



258 S. 18th Street
Philadelphia
215.546.4270

Design | Construction | Decorating
on Rittenhouse Square

'Twas The Season of Giving and Giving Back

BY MARILYN APPEL

Donations of pots and pans, dishes, bowls, kitchen tools, dish towels, and small appliances are welcome.

Two days before Thanksgiving each year, the 6th Police District Advisory Council (PDAC) provides Thanksgiving dinner for the police officers in the District. As Chair of this PDAC (an advisory group to the police, made up of businesses and professionals), I was on my way to the dinner (we "civilians" bring dessert) and I met a neighbor. When she heard what we were doing, she handed me a \$20 bill. That was multiplied three times when I told others at the District what had happened — such wonderful people we have living here.

Annually, the police and the PDAC host a Children's Christmas Party for first-graders in all the District's schools. This big party is held at St. Paul's Church & Community Center, 10th and Wallace Streets. St. Paul's provides the venue, tables, chairs and kitchen help. Police and civilians decorate, serve lots of good food, and lead a variety of games for the kids while a magician entertains them. Santa also appears at the party, attended by about 300 children, where each child usually receives two

gifts — paid for by contributions from businesses and individuals within the 6th District.

This Community Center, built over 50 years ago, provides many outreach programs — for small kids to young adults. The Center wants to conduct cooking classes, but its kitchen is in deplorable condition — e.g. broken countertops, ancient appliances, plywood cabinets and no dishwasher! Recently, when a Society Hill couple decided to remodel their kitchen, they generously donated their "old" cabinets and appliances to the Center. A new commercial range, new floor and a paint job are all that's now needed to complete the project. Of course, the Center welcomes donations of any kitchen supplies in good condition — such as pots and pans, sets of dishes, bowls, kitchen tools, dish towels, small appliances (e.g. toasters, blenders), and anything else needed for a well-functioning kitchen. If you have any such goods to donate (including, of course, financial help!), please call Marilyn Appel at 215-922-2626, and she will arrange to have your "stuff" picked up. Thanks so very much!

We are honored to print the *SOCIETY HILL Reporter*



SERVICES
 Pre-Press
 Variable Data
 Graphic Design
 Full Service Offset
 High Speed Copying
 Digital Color Printing

PRODUCTS
 Newsletters & Manuals
 Brochures & Invitations
 Legal Documents
 Oversized Color
 Stationery
 NCR

1310 Sansom Street
 Philadelphia, PA 19103
 T 215.717.5151
 F 215.717.7480

11 East State Street
 Media, PA 19063
 T 610.566.8499
 F 610.566.4513

MediaCopy
Focusing on you and your company's needs

www.mediacopyonline.com



BELL CLEANERS

@ Society Hill Towers

- premium dry cleaning service
- professional alteration & tailoring
- wash & fold service
- fine leather, suede & fur cleaning
- bedspreads, comforters & blankets
- table linens
- draperies
- all area rugs
- shoe repairs
- free pick-up & delivery
- same day service

Monday - Friday
7:30 - 6:30

Saturday
8:00 - 5:30

247 St. James Place • 215-925-2888

SAFE AND SOUND IN SOCIETY HILL

BY MARILYN APPEL AND FRANK SIGNORELLO

Trips and Safety Tips

Have you tripped on a loose brick lately? Leg boots, canes and crutches are currently in vogue here in Society Hill because of the neighborhood's countless uneven sidewalks. Here's the scoop! You could be liable if someone decides to sue if tripped and hurt in front of your house. As researched by our neighbor, Frank Signorello, here's the city's code regarding your responsibility as a homeowner for keeping your sidewalk safe:

Maintenance of the Sidewalk by Private Property Owners (Title 10 611- 6):

- *The owner and occupier of any private property shall keep the abutting sidewalk free of any litter, snow, or other obstructions, pursuant to Sections 10-704,714,720.*
- *The owner of any private property shall keep the abutting sidewalk in good repair, at the owner's expense.*

Those uneven bricks and tree roots are dangerous, and as the property owner, you are responsible for all sidewalk repairs in front of your house. SHCA's Safe & Sound Committee is working on an incentive program to help residents maintain their sidewalks. Contractors we've approached are willing to work at discounted rates to fix uneven bricks and shave tree roots. We'll be sharing more information about this program in future *Reporter* articles, but to learn more now, please be in touch with Frank Signorello at 215-764-5497 or Marilyn Appel at 215-922-2626, who are co-chairing "Project Brick."

Tip for the season:

If you're fortunate enough to have a garage connected to your home, remember to keep the garage doors not just closed, but locked! Recently bikes were stolen from a neighbor's garage along with other items stolen from the car parked there.

As the property owner, you are responsible for all sidewalk repairs in front of your house.



215. 886. 6111 | Oreland, Pa
 215. 725. 3637 | Philadelphia, Pa
 215. 572. 6937 | Fax
www.libertytreecare.com

- *Plant Health Care*
- *Custom Pruning*
- *Landscape Design/Build*

Mike Duffy
 Certified Arborist
 PD-1766A
 20 years experience



Dax Israel
 Certified Arborist
 PD-1795A
 8 years experience



Sean Munnley
 Certified Arborist
 PD-1790A
 27 years experience



Joe Toohey
 Certified Arborist/Consultant
 PD-0367A
 29 years experience



READING TERMINAL MARKET

**PHILADELPHIA'S
 HISTORIC
 INTERNET CAFÉ**

 Bring your laptop and your appetite. Grab a cup of coffee and enjoy free Wi-Fi Internet access at the Market.

TAKE ME TO THE RIVER

The Cross Philly Walk

Pedestrians will experience the unique historic character of Philadelphia on this self-guided walking tour.

CCROSS PHILLY WALK, conceived by Penn-trained environmental planner and consultant Steven Hammell and first brought to public attention in the *Philadelphia Inquirer* in June 2006, is designed to be a self-guided walking tour linking the Delaware and Schuylkill riverfronts through the Fidler Square, Washington Square West and Society Hill neighborhoods. This low-cost program is meant to increase access between these communities and the rivers, while also providing an interesting way for visitors to experience the unique historic character of Philadelphia.

Attached to several planning initiatives related to the riverfronts, Cross Philly Walk is expected to become the walking tour route through Center City for the East Coast Greenway Project — a hiking and cycling route that will connect Calais, Maine, with Key West, Florida. It will also become part of the planned Schuylkill River Trail extending north along the river beyond the city limits and south to Bartram’s Garden, and to the University of Pennsylvania’s proposed

pedestrian bridge across the river at Locust Street. By connecting the growing population of Center City to its riverfronts, with pleasant and attractive routes, Cross Philly Walk will further enhance use and development of projects planned for both riverfronts — whether for events, programs or recreation.

The project will consist of four components: a self-guided walking tour brochure illustrating and describing places along the Cross Philly Walk; a pocket-size map of the entire tour route, indicating the location of key attractions and places of interest; a website with downloadable copies of the brochure and map, plus information about other projects and events along the two riverfronts; and distinctive, low-key route markers to help people follow the route, linked to the route maps. For more information, contact the John Andrew Gallery, 215-546-1146 Ext. 1 or John@preservationalliance.com, or Steven Hammell, 215-779-4068 or hammdav@verizon.net.

NATIONAL WATCH & DIAMOND



OVER 300 PRE-OWNED ROLEX IN STOCK

Also Cartier, Breitling, Ebel, Patek, Vacheron, Audemar and a Large Assortment of Diamond Bezels and Dials.



Buy with Confidence from an Established Store!
1,000 Certified Diamonds
GIA, EGL & AGA

N.W.E. is not an official Rolex dealer and Rolex's warranty so longer attaches.

8th & Chestnut Streets, Philadelphia, PA 19106

Visit Our Web Site: nationalwatch.com

1-215-627-WATCH

Master Personal Trainer and Massage Therapist
M. Jason Bailey



Best of Philly runner up
Drexel Graduate
NASM
NSCA
AAAI- Pre/Post natal
CPR
Functional Training
Weight Loss Specialist

Limited time only

5 Personal Training Sessions
\$100

Recommended By
 Plastic Surgeon
Paul Glat

Phone: 215-901-5816
Jason@FitnessResultsLLC.com
www.FitnessResultsLLC.com

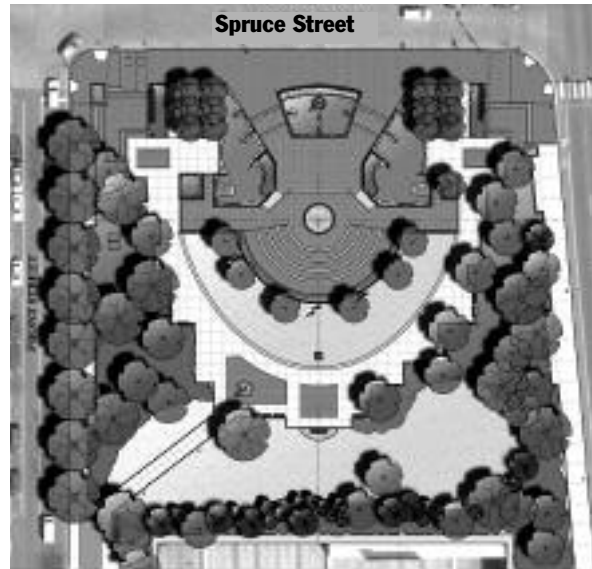
FITNESS RESULTS LLC

Vietnam Memorial Undergoing Redesign

The Philadelphia Vietnam Veterans Memorial Fund (PVVMF), the nonprofit organization that oversees the site at Front and Spruce Streets, has launched a project to restore and preserve the Memorial which honors the 646 Philadelphians who lost their lives in one of America's most protracted conflicts.

The redesign project, prepared by Cope Linder Architects of Philadelphia, will open up the Memorial's Spruce Street side — to make it more public — while serving to deter vandalism that has plagued the site. To date the PVVMF has raised \$500,000 for restoration work. It hopes to raise an additional \$1.5 million to open the wall along Spruce Street, build an endowment and help raise awareness of the Memorial for future generations.

This project will be conducted in two phases: the first will repair damage caused by weather, age and vandalism; the second phase will involve construction to the "wall of scenes" on the north (or Spruce Street) side of the site. Preliminary engineering work is



An overview of the planned Vietnam Memorial site redesign.

underway and restoration work will begin in the next few months, once all necessary approvals have been obtained. The second phase will begin after the nonprofit organization successfully completes its fundraising efforts.

Please call 215-576-1216 for more information, or visit the website at www.pvvm.org.

A project to restore and preserve the Memorial has been launched.



A view of the Spruce Street entrance to the redesigned Memorial.

Louie DiCicco Construction
Specializing in Kitchens, Baths, Flooring & Tile Work

- Local References Available
- Free Estimates
- Licensed and Insured


Phone: 215.694.6443


MATH TUTOR


Ph.D will tutor junior high, high school & college students. Experienced, patient, & able to explain mathematics clearly. Will diagnose & correct problems.

Stephen Plafker
 (215) 925-1068
StevePlafker@msn.com

ST. PETER'S SCHOOL
ACADEMIC EXCELLENCE SINCE 1834




At St. Peter's School, students establish the foundation for a fruitful and principled life. St. Peter's School is an independent and non-denominational school educating boys and girls from preschool through eighth grade.




Visit St-Peters-School.org for complete information.
319 Lombard Street • Philadelphia, PA 19147 • 215.925.3963

**A Vibrant City.
A Close Community.
A Culture of Learning.**




A college preparatory, coed, Quaker day school, pre-K through 12, at 17th on The Parkway in Center City Philadelphia. Admission and open house information: 215.561.5900 ext 104 www.friends-select.org

Make Your Next Event Historic!




THE DOWN TOWN CLUB
WEDDINGS CORPORATE MEETINGS EVENTS



Award Winning Cuisine Exceptional Service
215 925 2040
6th & Chestnut Streets Philadelphia 19106

CHILDREN'S DENTAL ASSOCIATES, P.C.
STEPHEN D. COHEN, D.D.S.



PEDIATRIC
DENTISTRY
AND
ORTHODONTICS
Since 1973

607 Chestnut Street
Philadelphia, Pa 19106
www.kiddy2th.com
215-925-6251

UNIQUE CHILDREN'S CLOTHING, TOYS & GIFTS



713 Walnut Street
Philadelphia, PA (215) 625-2655
info@lollilolli.net

NEWBORN TO 12
BOYS & GIRLS
LAYETTE & GIFT REGISTRY • WRAPPING & SHIPPING

KIDS' LIFE IN THE CITY

BY SONIA GRASSE & CATHERINE SIGNORELLO

Conscious Consumption

What triggers the switch from just browsing to pulling out the wallet? There are so many reasons to make a purchase: we spend out of a sincere need, sometimes out of want, or to procure a symbol that may have required much planning and saving. There is the vanity purchase to keep up with the Joneses, the compulsive purchase, the “good deal” and retail therapy. As parents, we frequently purchase gifts of all sizes and values for our children, but hidden beneath the transaction might even be a need to appease some parenting guilt. We have all likely, though perhaps not so readily or admittedly, bought under each and every circumstance. The list of why we buy goes on and on. Conscious consumption is the act of shopping with a clear awareness and connection to the motivations behind our spending.

According to slowfood.com, the slow food movement “counteracts a fast food and fast life, the disappearance of local food traditions and people’s dwindling interest in the food they eat, where it comes from, how it tastes and how our food choices affect the rest of the world.” If we borrow this same idea of choosing to deliberately slow down and apply it instead to our shopping habits, the quality of our lives could not help but be enriched. By examining and deliberately cultivating the motivations behind our spending, we too can effect a positive change, as our shopping choices already affect the rest of the world.

Some friends of ours use the term ‘spaving’ — spending to save. We ‘spave’ when we purchase something not of immediate need but simply because it is on sale, or when we buy in bulk, where it costs more money up front but is cheaper in the long run. If we look more closely at the term spaving, however, it also holds an entirely different and broader meaning.

We can spend consciously and locally and have an enormous impact on our community. We can choose to spend and keep the independents from shuttering their doors and businesses. We can direct our monies to local, organic food (and farmers!) and save our families from chemicals and hormones that damage our bodies, minds and environment. By deliberately spending,

we preserve the unique diversity that vested individuals bring to a retail experience and can save ourselves and our children from the dominating presence of mundane chain stores. Perhaps we could look at it as a “quality of life and community” tax. Spending to save is something we can do proactively and effectively, and those extra few dollars or cents that it might cost us to do so will save us much more.

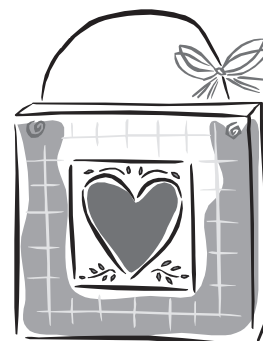
Society Hill and its surrounding neighborhoods are filled with many wonderful, unique and diverse independently owned stores where we could ‘spave’ — businesses that in this time could use our hard-earned cash more than ever. Each swipe of the cash card literally materializes our values, and every single purchase we make exercises our consumer power. In the past we may have spent our money at places like Target, Wal-Mart and other “money saving” stores.

But if we stop and honestly examine our spending habits, we might discover that the money we have saved by shopping at a giant retailer is actually costing us in other ways — one of the most direct being the diversity of our neighborhood shopping experience. It is our business-owner neighbors, the people we know and see on the street — they are the ones paying the price of our super-store savings, and the cost is truly enormous. To give you an example, Philadelphia’s oldest independent bookstore (Robin’s — at 1837 Chestnut Street) has just announced that it is closing.

When buying, we must make it a habit to consider looking beyond the bottom line and to deviate from our autopilot ways of shopping. By being a conscious consumer we truly can accomplish volumes more, especially when we consider that the few dollars (or cents) more that we ‘spave’ go directly to the preservation and cultivation of our community, our spirits, and this precious beautiful village in which we raise our children. After all, isn’t that what is truly of value?

Q: What on earth is ‘spaving’?

A: ‘Spaving’ is spending to save!



ACCIDENTAL TOURIST IN MY OWN BACKYARD

A COLUMN BY JANE BIBERMAN

My Historic Next-Door Neighbor, The Athenæum

Members enjoy the latest books and periodicals, monthly lectures and symposia, and access to countless rare book collections.

NEWSPHOTO: “On the First of June... Three men with felonious intent stole a pickup truck. About 3:00 a.m. they located a promising late-model motorcycle, which they loaded into the truck. But the police had been alerted, and a high-speed chase down 6th Street ensued. At Walnut Street, the perpetrators lost control. Tree, lamp, and fireplug were mown down as the truck lurched across the curb at St. James Street and crashed into the façade of the Athenæum building. The occupants of the truck fled on foot, leaving wreckage...volatile gasoline splashed over the cracked and chipped brownstone. Fortunately, the gasoline did not quite reach the flickering gas lamps which would have ignited the entire pyre.”

This item, the style of which is reminiscent of a Victorian novel, appears in — of all places — the 190th and 191st (2005-2006) Annual Reports published by The Athenæum of Philadelphia. It was written by Roger W. Moss, the recently retired director of the venerable institution. According to Moss, “It took three months to remedy the physical and environmental damage; and unless you look closely, the building is none the worse for the experience.”

Because I live practically next door to the Athenæum, on the east side of Washington Square, I rarely stop to look at the plain brownstone building. Designed by John Notman in the Italianate Revival Style, it was established in 1814 as a special collections library of materials “connected with the history and antiquities of America, and the useful arts, and generally to disseminate useful knowledge.” Once in awhile, I dropped by to see a special exhibition on architecture or design — such as the exquisite drawings by my neighbor and Athenæum member, Rosemond Curson Price (aka “Aunt Bobby” — the aunt of Society Hill resident, Susan Schwartz) whose watercolor renderings were displayed alongside those of Beryl Price, Rosemond’s late husband, dating from their student days almost 80 years ago.

This past November, I joined a capacity crowd of more than 300 people who gathered for a slide presentation by Mr. Moss and Tom Crane, one of our city’s premier photographers. The festive occasion was the publication of the last in their trilogy, *Historic Philadelphia Landmarks*, a companion volume to *Historic Houses of Philadelphia* and *Historic Sacred Places of Philadelphia*. I was lucky enough to be invited as the guest of a long-time member of this private library, Joy Lindy, who has promised to submit my name for consideration as a member, or “stockholder,” at the Athenæum’s board meeting on January 26th.

A share costs \$400 to purchase and annual dues are \$125. That’s pricey in these dismal economic times, but consider the rewards: a lending library that offers the latest books and periodicals; monthly lectures and symposia; and access to countless rare book collections, among them dozens of beautifully bound and illustrated volumes on fox-hunting, a passion of mine. Imagine the luxury of perusing Siegfried Sassoon’s *Memoirs of a Fox-Hunting Man* in the handsome, “old-world” Members’ Reading Room with its 24-foot-high ceiling, balcony bookcases and Corinthian columns.

Of course, you don’t have to be a member to enjoy the Athenæum. Executive Director Sandra L. Tatman says that visitors are welcome to explore the institution, itself featured in



The handsome “old-world” Members’ Reading Room with its 24-foot-high ceiling, balcony bookcases and Corinthian columns.

ACCIDENTAL TOURIST IN MY OWN BACKYARD

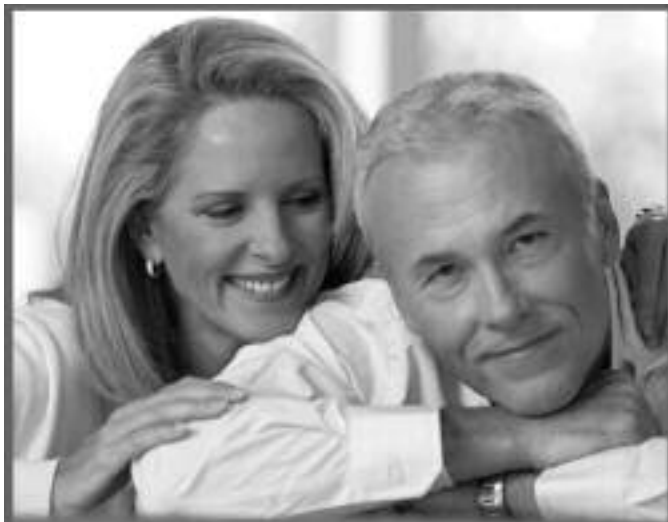
Historic Philadelphia Landmarks. There are all kinds of Early American decorative arts — paintings, sculpture and rare objects. My personal favorites are an ingenious Victorian water filter and a ceiling-high clock with the following inscription on its door: "This clock was made by Isaiah Lukens, a well-known clockmaker of about fifty years ago, for the Philadelphia Bank, where it remained until the bank moved, June 30, 1859, from the building at the S.W. corner of Chestnut and Fourth Streets, to its present quarters, when it was exposed at public sale by M. Thomas & Sons, Auctioneers, and bought by Henry Bird, Librarian of the Athenæum, for twenty-three dollars. —January 30, 1897." *

"It's a great story," says Ms. Tatman. "And we also have a portrait attributed to Rembrandt Peale — but not verified — of Lukens which hangs next to the clock."

Don't miss the current exhibit of thirty extraordinary photographs from Philadelphia Landmarks, on view in the Haas Gallery until February 9th. Contemporary architecture by the local firm of Voith and MacTavish will be shown from February 16 to March 6. "Enchanted Simplicity," an exhibition of children's literature and illustrations, goes on display from March 23 through June.

The Athenæum is open Monday to Friday from 9 a.m. to 5 p.m. and on the first Saturday of every month from 10 a.m. to 2 p.m. For more information, visit www.Athenaonline.org.

* Editor's Note: Two additional clocks constructed and installed by none other than Isaiah Lukens (1779-1846) can be found in our neighborhood: One is located at Independence Hall and the other at America's oldest firehouse — Head House — at 2nd and Pine Streets.



Get coverage that's right for you. Save up to \$500* when you do.

Give me a call or stop in to get a quote.

Gannon Coyne & Associates, Inc.
Deanna Gannon Coyne
coyned@nationwide.com
108 South Street
Philadelphia, PA 19147
(215) 574-9080

Nationwide
On Your Side
Auto Home Life Business

Member of Gannon Coyne & Associates, Inc. (GCA) is licensed by the State of Pennsylvania as a Broker/Dealer in Life Insurance, Fire Insurance, and Health Insurance. GCA is also licensed by the State of Pennsylvania as a Broker/Dealer in Life Insurance, Fire Insurance, and Health Insurance. GCA is also licensed by the State of Pennsylvania as a Broker/Dealer in Life Insurance, Fire Insurance, and Health Insurance. GCA is also licensed by the State of Pennsylvania as a Broker/Dealer in Life Insurance, Fire Insurance, and Health Insurance.

PENN'S VILLAGE



Penn's Village — an innovative, nonprofit organization designed to enhance the lives of Old City, Queen Village and Society Hill residents as they grow older or have special needs — is pleased to announce its new and user-friendly website, www.pennsvillage.org. For the past six months Penn's Village has been successfully offering services, programs and support that enable its members to live healthy and meaningful lives in their own homes. Now, from the convenience of your own home, Society Hillers can learn all about Penn's Village and how to become a friend, volunteer, member or donor by contacting 215-925-7333 or info@pennsvillage.org.

Any questions? Please do not hesitate to reach us.

Creating harmony in body and mind

Judy Moon and Associates

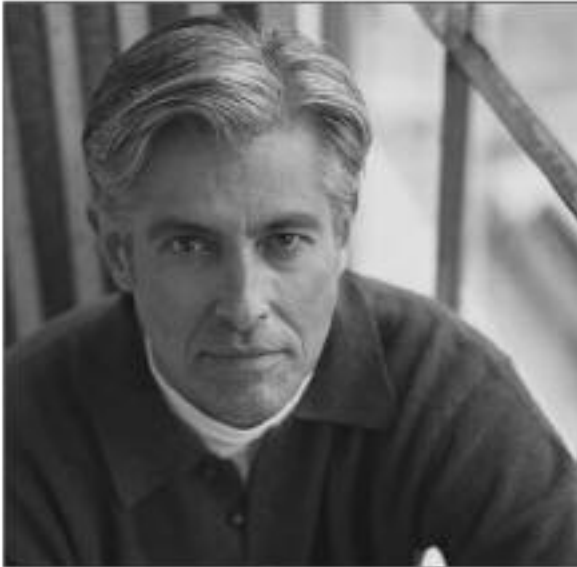
CONVENIENT, RELAXING MASSAGE THERAPY

Washington Square South
in the Hopkinson House

ABMP Certified

267.671.0861 www.judymoon.com

Has the market rebalanced your portfolio for you? Now's a good time for a check-up.



Market changes—whether up or down—can result in a portfolio that is out of balance. To keep your selected asset allocation on track and make sure you're properly diversified both across and within investment classes, a Merrill Lynch Financial Advisor can help you rebalance your portfolio on a regular basis. We'll review your current asset allocation in the context of your total financial life, then recommend a mix of investment strategies to help you manage risk and achieve your goals.

Our Financial Advisors can put the powerful resources of Total MerrillSM to work for you. Call today.

Thomas J. Tarka
Senior Vice President—Investments
Financial Advisor
(800) 733-2180

1650 Market Street
Philadelphia, PA 19103



TOTAL MERRILLSM

The Total Merrill brand is used to refer to the broad range of brokerage, investment advisory (including financial planning), banking, trust, mortgage, and other financial services and products offered by Merrill Lynch. The nature and degree of advice and assistance provided, the fees charged, and client rights and Merrill Lynch's obligations will differ among these services. Total Merrill (design) is a registered service mark of Merrill Lynch & Co., Inc. Total Merrill is a service mark of Merrill Lynch & Co., Inc. © 2008 Merrill Lynch, Pierce, Fenner & Smith Incorporated. Member SIPC.

Global Wealth Management
Global Markets & Investment Banking
Global Research

 **Merrill Lynch**



Pennsylvania Hospital

As a leader in research, treatment and patient care, Pennsylvania Hospital is at the forefront of medicine. By utilizing the latest, cutting-edge technology and performing more advanced procedures, Pennsylvania Hospital provides patients with superior health care focused on their individual needs.

For more information about
our services and programs or
to schedule an appointment,
call 800.789.PENN [7366].

WE ARE MEDICINE.  **UNIVERSITY OF
PENNSYLVANIA
HEALTH SYSTEM**
800.789.PENN pennhealth.com

Heart Care | Bariatric Surgery | Bloodless Medicine and Surgery |
Minimally Invasive Surgery | Orthopaedics | Neurosurgery |
Cancer Care | Robotic Surgery

Washington Square Plantings

On a beautiful day in October, we had a great volunteer turnout to help plant hundreds of spring bulbs and tidy up the existing flower beds throughout Washington Square. The additional aid of staff members from Independence National Historical Park, as well as two assistants from Enchanted Gardens, insured that much was accomplished in just one day.

Several third-grade students from St. Peter's School happily joined our group and had a wonderful time loading wood chips into wheelbarrows and then dumping them onto the flowerbeds. Sissie Lipton, Vice-President of SHCA and Chairperson of its Washington Square Committee, informed these young helpers that the chips were made from a huge tree that was recently cut down in Washington Square — now being recycled as mulch for the plants. She explained that the wood chips would protect the plants over the winter and help keep the soil moist...a good lesson in recycling.

Our community looks forward to the coming of spring — when the park will be ablaze with color from the 950 bulbs placed throughout Washington Square — thanks to the enthusiastic assistance of so many volunteers.



At left, Sissie Lipton, Bobbi Karafin, St. Peter's School teacher Wendy Carneccchia and her students help to garden in Washington Square.

Parallel Design

Judy Lamirand
215-476-4040

- *graphic design*

Logos

Stationery

Brochures

Newsletters

Invitations

Annual Reports

Posters

Banners

Calendars

Books

Menus

The Reporter!





buckminstergreen

Custom home remodeling and green building in Philadelphia.

From a new front door to an efficient and unique new kitchen, let us design and build a project that fits your budget, style and needs.

484.432.2692

www.buckminstergreen.com

COMPUTER HELP



SOCIETY HILL COMPUTER ASSOCIATES

RELIABLE TECHNOLOGY SOLUTIONS
FOR YOUR HOME AND BUSINESS

WE PROVIDE SIMPLE ANSWERS TO
TODAY'S COMPLEX IT QUESTIONS

- LAPTOP/DESKTOP REPAIR
- SECURE WIRELESS NETWORKS
- PALM/BLACKBERRY/IPHONE HELP
- CUSTOMIZED TRAINING
- VIRUS/SPYWARE REMOVAL
- MUCH, MUCH MORE!

QUALITY
YOU CAN
TRUST



MENTION THIS AD AND RECEIVE

20% OFF
YOUR FIRST SERVICE

FOR MORE INFORMATION CALL:

(267) 570-0547

OR

VISIT OUR WEBSITE:

WWW.SOCIETYHILLCOMPUTER.COM

Chef Felix Maietta of The Down Town Club
in Philadelphia presents



IT'S ALL ABOUT YOU AND THE FOOD!

GOURMET TO GO

MARKET

CAFÉ

CATERING

*Let Us Take Care of Your Holiday
Home Entertaining Needs..*

- Prepare Your Holiday Dinner
- Cocktail & Party Platters
- Gourmet Gift Baskets
- Hostess Gifts
- UGM "Gift of Choice" Gift Cards

Ask about delivery to your home or office

Table Service

BREAKFAST • LUNCH • DINNER

SUNDAY BRUNCH

11:00 am-3:00 pm

215•238•8800

www.uniongourmetmarket.com

1113 Locust Street, Philadelphia, PA 19107

Located in the Residences at The Western Union Building

SOCIETY HILL'S PREMIER SALON
316 S. 5TH STREET
215 873 8890

UNASSUMING, BUT CERTAINLY NOT ORDINARY.

salon @ 5th

SUPPORT OUR CONTRIBUTORS

Society Hill's Welcome Baskets

We thank all the following shops and services which generously contribute goods or services to our "Welcome Baskets" program. These baskets, filled with fresh goods and gift certificates, are presented to new, first-time Society Hill home or condo owners — delivered to their homes by appointment. We strongly recommend that Society Hillers patronize these local businesses.

New in Society Hill? First-time home or condo owner? Let us know, so we can bring you a Welcome Basket filled with goodies. Just contact Martha Levine, Welcome Basket Coordinator, at marthalev@msn.com or 215-629-0727.

Coffee Shops

Old City Coffee, 221 Church Street & Reading Terminal Market
Philadelphia Java Company, 518 S. 5th Street
Starbucks Coffee Inc., 8th & Walnut Streets

Food Stores

Chefs' Market, 231 South Street
Farm Fresh Express (delivery of local organic foods), 607-423-7111
Fork: etc. (prepared foods), 308 Market Street
ShopRite, 29 Snyder Avenue
SuperFresh, 5th & Pine Streets
Whole Foods Market, 929 South Street

Hair Salons

Pileggi on the Square, 717 Walnut Street
Salon @ 5th, 316 S. 5th Street

Restaurants

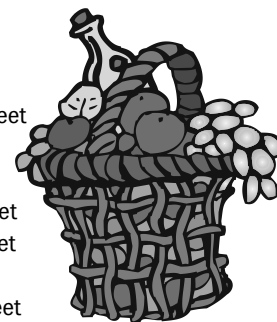
Amada, 217 Chestnut Street
Ansill Food & Wine, 627 S. 3rd Street
Ava Restaurant, 518 S. 3rd Street
Bistro Romano, 120 Lombard Street
Bridget Foy's South Street Grill, 200 South Street
Caribou Café (French Bistro), 1126 Walnut Street
City Tavern, 138 S. 2nd Street
Creperie Beau Monde, 624 S. 6th Street
Fork, 306 Market Street
Joe Pesce Restaurant, 1113 Walnut Street
La Buca Ristorante, 711 Locust Street
Core De Roma, 214 South Street
Mustard Greens, 622 S. 2nd Street
Panorama Ristorante, 14 N. Front Street
Philadelphia Fish & Company, 207 Chestnut Street
Pizzicato Restaurant, 248 Market Street
Positano Coast Restaurant, 2nd and Walnut Streets
Zot (Belgian cuisine), 122 Lombard Street

Specialty Foods

Homemade Goodies by Roz, 510 S. 5th Street
Metropolitan Bakery at the Metro Café, 15 S. 3rd Street
Naked Chocolate Café, 1317 Walnut Street
Pink Rose Pastry Shop, 630 S. 4th Street
Rita's Water Ice, 239 South Street
Zeke's Deli, 318 S. 5th Street

Specialty Shops

Adornamenti (jewelry), 1106 Pine Street
Ethnics Furniture (Indonesian) 928 Pine Street
Happily Ever After (toys), 1010 Pine Street
Head House Books, 619 S. 2nd Street
Linu Boutique (linen items), 1036 Pine Street
Lolli Lolli (childrens' shop), 713 Walnut Street
Lush (bath products), 1428 Walnut Street
Marmelstein's Fabric & Trim, 760 S. 4th Street
Paper On Pine, 124 S. 13th Street
Pileggi Boutique, 715 Walnut Street
Pinot (wine accessories), 227 Market Street
Show of Hands Gallery (crafts), 1006 Pine Street
W. Graham Arader III (fine antique prints, framing), 1308 Walnut Street



Sports Clubs/Fitness Training

M. Jason Bailey, Fitness Professional, 215-901-5816
Philadelphia Sports Club, 220-250 S. 5th Street
SCULPT-Fitness Professional, 215-928-1433

Theaters/Entertainment

Annenberg Center for Performing Arts, 3680 Walnut Street
Arden Theater, 40 N. 2nd street
Atwater Kent Museum, 15 S. 7th Street
1812 Productions (all comedy theater), 215-592-9560
Ghost Tours of Philadelphia, 610-404-8474
Independence Seaport Museum, 211 S. Columbus Blvd.
Lantern Theater Company, 10th and Ludlow Streets
Lights of Liberty, 6th & Chestnut Streets
National Liberty Museum, 321 Chestnut Street
Pennsylvania Ballet, 1101 S. Broad Street
Philadelphia Chamber Ensemble, Old Pine Street Church
Philadelphia Shakespeare Festival, 2111 Sansom Street
Philadelphia Theatre Company,
Suzanne Roberts Theater, Broad & Pine Streets
Philomel Concerts, 215-487-2344
Piffaro, The Renaissance Band, 215-235-8469
Prince Music Theater, 1412 Chestnut Street
Society Hill Playhouse, 507 S. 8th Street
The Chamber Orchestra of Philadelphia, 1520 Locust Street
The Philadelphia Chamber Music Society, 215-569-8080
Wilma Theater, 265 S. Broad Street

Other Services

Advanced Spinal Care Center, 1129 Pine Street
Ananda Spa & Fitness Center, 400 Walnut Street
Judy Moon Massage Therapy, Hopkinson House, Washington Sq. South
Liberty Tree & Landscape Management, 215-725-3637
Metropolitan Moms, metropolitanmoms.com, 215-667-8977
Riff Cleaners, 314 S. 5th Street
Simplified Living LLC (solutions to your needs), 215-813-3506
Society Hill Dance Academy, 409 S. 2nd Street
Society Hill Veterinary Hospital, 2nd & Lombard Streets
Wellness Chiropractic Center, 700 E. Passyunk Avenue
The Worth Collection (women's clothing), 215-925-8813



Dear Neighbors;
Thank you for your business, referrals and another wonderful year!
As your neighbor for over 39 years and your realtor for 21 years, I look forward to continuing to serve you

as your neighborhood specialist in either the selling of your home or as a buyer in finding you a new one. Please call me for a complimentary market evaluation.

Best Wishes for a happy and healthy 2009!

Jan Stephano ABR, ASR
 Plumer & Associates Realtors Inc.
 226 South Street
 Philadelphia, PA 19147



Jan Stephano
215.922.3600 x219

Top 6% of all Realtors in Prudential Network Nationwide

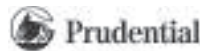
Accredited Luxury Home Specialist

Diamond Award



■ **PAMELA D. LAWS**
 ABR, ALHS, SRES, ASP

DESTINATION: HOME



Fox & Roach
REALTORS®

215.546.0550

215.790.5688 | pam.laws@prufoxroach.com

WWW.PHILADELPHIAPROPERTIES.NET

An independently owned and operated member of the Prudential Real Estate Affiliates, Inc.



COMMITMENT
 INTEGRITY
 SERVICE



Gail Trimble, ABR

Buyer & Seller Representation



215.922.4200 ext.302
 gtrimble@plumerre.com
 226 South Street
 Philadelphia, Pennsylvania 19147

90% of our business comes from friends telling friends!



Kathy, Patrick and the
Conway Team

Recent Recipients of the most prestigious award attainable "The Pinnacle Award." This award is reserved for the Top Ten Prudential agents nationwide out of 68,000 agents in the entire U.S.A.



Society Hill
 215.627.6005
 www.conwayteam.com

KATHY 215.440.8190
 kathy@conwayteam.com

PATRICK 215.440.8172
 patrick@conwayteam.com

Independently owned and operated member of the Prudential Real Estate Affiliates, Inc.

RESOURCE GUIDE

Zoning and Historic Preservation Guidelines

One of the primary goals for SHCA's Zoning and Historic Preservation Committee (ZHP) is to encourage and assist homeowners to become happy neighbors. The high standards we maintain for historic preservation are vital to keeping the integrity of our historic district, but need not cause undue stress on the part of homeowners.

Here are a few basics about homeownership in Society Hill:

Society Hill, as an official "Historic District" within the City of Philadelphia, requires that any architectural change to the exterior of a building, no matter its age, must be approved by the Historical Commission. Examples include an addition, replacement of windows or doors, a roof deck or any other permanent change. These need to be reviewed and must comply with the Preservation Ordinance and The Secretary of the Interior's Standards for Historic Preservation. This is not as onerous a process as it sounds — because many local architects, as well as ZHP Committee members are very familiar with these provisions and can answer your concerns and/or help to guide you. Remodeling interiors does not trigger the Ordinance, but only the Building Code, since interior changes do not affect the historic character of the neighborhood.

We are fortunate to have a Zoning Code whose various provisions have helped to produce the wonderful neighborhood we enjoy today. You will likely notice the difference between Society Hill and other nearby neighborhoods. Our zoning plays a major role, because it provides clear guidance for a careful and thorough master plan.

If or when you plan to remodel, you will need to comply with a set of standards. Basically, the Code requires for any home a certain or minimum amount of open area (e.g.: 30 percent for a back yard); certain restrictions on height and the location of amenities, such as decks or parking. There are other parts of the law, but 90 percent of the cases focus on these basic areas.

The ZHP Committee, one of the larger and more active committees in our civic association, is composed of volunteers from various professions and backgrounds. At its monthly meetings, members review and support our neighbors — which results in quality improvements and developments that are then submitted for approval before both the city's Historical Commission and the Zoning Board of Adjustment.

For further information, or if you wish to schedule a meeting, please contact ZHP's Chair, Steven A. Weixler, at stevenweixler@verizon.com or 215-592-9570.

Keep this Resource Guide handy for future reference!



CAROLE WEINSTOCK
 Professional Organizer
cleantheclutter@comcast.net
 856-952-4439

CLEAN THE CLUTTER
 Let us Simplify, Beautify, and Maximize Your Space!

**We Reorganize and Transform
 All Closets, Kitchens, Baths, Etc.**

BE UNIQUE
 WEAR
 ONE-OF-A-KIND ART JEWELRY
 from
ADORNAMENTI
 A Collection of Jewelry
 1106 Pine Street
 215-922-2722

DECORATE YOUR HOME
 ONE-OF-A-KIND CONTEMPORARY CRAFTS
 from
SHOW OF HANDS
 A Collection of Crafts
 1006 Pine Street
 215-592-4010

*We contribute to Welcome Basket.
 We are located on Historic Antique Row.*



90%
of My
Business
Comes from
Referrals

**Family • Friends • Neighbors
Satisfied Customers
Other Realtors**

**Rosemary Fluehr, GRI
Associate Broker**
215-440-8195 – Direct
215-627-6005 – Office
rosemary.fluehr@prufoxroach.com



530 Walnut Street
Suite 260
Philadelphia, PA 19106

**Plumer &
Associates, Inc.
Realtors**

Plumer

Center City's largest
independent Realtor.
Serving Philadelphia since 1923.

**Residential,
Commercial,
and Investment
Real Estate**

For a complete listing of Center City
properties visit our website:
www.plumerre.com



226 South Street, Philadelphia
info@plumerre.com
215 922 4200



FEATURED SOCIETY HILL LISTING!



640 Addison Street

Desirable 4 bedroom, 3.5 bath
home with deeded PRKG.
Finished basement. Fireplace.
Patio & balcony. Approx. 3,000'.

\$875,000.

DIRECT LINE - 215.790.5662
jeff@jeffcityblock.com

 **Prudential** Fox & Roach REALTORS 215.546.0550



**Last Wednesday
Mrs. Dorothy Jones
earned \$500 during
her lunch break.**

Dorothy Jones knows that when
she brings us her unwanted gold jewelry
she'll earn Top Dollar for old bracelets,
chains, pins, earrings, rings, etc.

So...if you're not busy next week...
how about lunch?

**737 Walnut Street
215-925-3025**

RESOURCE GUIDE

Visit these Useful Websites

Hallwatch

www.hallwatch.org

The ultimate source of city government information, including searchable databases, property records, City Council proceedings, elections and more.

Neighborhoods Online

www.phillyneighborhoods.com

A useful resource for neighborhood information on schools, real estate, elected officials, and much more.

Neighborhood Information System:

NeighborhoodBase

cml.upenn.edu/nbase/

A publicly accessible, web-based geographic data application developed by the University of Pennsylvania's Cartographic Modeling Lab. Search more than 200 different data elements of the city's neighborhoods, all the way down to the block level. Search through census data, housing data, demographic data, and create maps and charts all online.

Philadelphia City Planning Commission

www.philaplanning.org

The City Planning Commission is responsible for guiding the orderly growth and development of the City of Philadelphia. This site contains development reports, city statistics, maps, and other publications.

Philadelphia Architects & Buildings

www.philadelphiabuildings.org

This site serves as source to determine if your home is on the Philadelphia Register of Historic Places. The Philadelphia Architects and Buildings database provides authoritative information on three centuries of Philadelphia buildings and designers.

Center City Schools

www.centercityschools.com

A new initiative to provide parents of school-age children with information about school options within the city.

  <p>The Atacan Group THE NEW GENERATION OF REALTORS</p>	<p>Antonio Atacan 215-917-1213 Keller Williams Realty 215-627-3500</p> <p>www.AtacanGroup.com Philadelphia's Source for Real Estate</p>	
<p>KELLER WILLIAMS Ranks HIGHEST in Customer Satisfaction</p>		<p>Recent Client Question (see atacangroup.com/blog for more Q & A)</p>
		<p>Client: "It's a Buyer's Market. I am not buying unless I find a steal. I can wait for a year. Isn't the inventory massive anyway?"</p> <p>Home prices are based on Supply and Demand curves, and the housing inventory is falling. The number of homes for sale nationwide declined by 1.6% in October. Additionally, healthy markets like in Seattle & Chicago played as much a part in reducing national home supplies as previously hard-hit cities like Miami and San Diego.</p> <p>The reasons are two-fold: Savvy buyers are aware of the negotiation leverage they have over sellers and they use it AND banks are getting better at selling foreclosed homes. This helped homes sell in a typically a "slow" month, boding well for the housing market going forward.</p>
<p>J.D. Power & Associates, the Voice of the Consumer, reported KELLER WILLIAMS REALTY ranks the Highest in Client Satisfaction among buyers. KELLER WILLIAMS received a PERFECT SCORE in all 4 categories blowing away the other brokerages, like Prudential & Re-Max and Coldwell Banker.</p>		<p>Plus, Chase Mortgage, CitiMortgage, Bank of America and Fannie Mae have all enacted a moratorium on home foreclosures. This should lead to lower inventory levels because fewer homes will head for the auction block. In every market, the value of real estate is based on scarcity.</p>
	<p>ANGELINA'S STORIES FROM THE DOLL HOUSE!</p> <p>I just love December in Society Hill! The neighborhood is all decorated and lit up and when it snows it like a wonder land. Also, it's my brother Julian's 3rd birthday, and we always have a fun party! Plus, it's the holidays!!! I have been practicing for Saint Peter's winter pageant and I learned a load of great songs. AND I am being extra-good because Santa is coming and I am hoping for fun presents!</p>	



I Would Like To Extend My Best Wishes To All For a Happy Holiday Season And a Healthy And Prosperous New Year!

215-893-9800 Office
215-440-8253 Direct
215-350-0922 Cell
johanna.loke@prufoxroach.com
www.hohannaloke.com



Johanna Loke
Associate Broker

Experience the difference.
See the results.

1800 Rittenhouse Square
Philadelphia, PA 19103



Prudential

Fox & Roach
REALTORS®

An independently owned and operated member of The Prudential Real Estate Affiliates, Inc.



Thinking of Selling?

Call Mike McCann, "The Real Estate Man"

#1 Prudential Sales Associate
in the *entire United States!*
in 2004, 2005, 2006 & 2007!

#13 Team in the US as seen in *The Wall Street Journal*
—Over 600 Homes Sold in 2006!

Get a FREE, no-hassle estimate of value
Your home may be worth more than you think!

Seller's Hotline
215-778-0901

Buyer's Hotline
215-440-8345

Take a virtual tour of Mike's listings online. Visit www.mccannteam.com

102 DELANCEY

\$1,150,000

Gorgeous, rarely offered, extra wide 3BD/3.5BA+den, 1 car parking, exercise room, gorgeous rear yard, Euro-style kitchen, gas fireplace, laundry room, custom storage, central air, moldings, dual-zoned heating and cooling.

901 RODMAN

\$825,000

Unique 3BD/2.5BA+den, balcony, large yard, 2 car parking, lots of light, hardwood floors, wood burning fireplace, lots of closet space.

322 LOMBARD

\$740,000

Amazing, historically certified 3BD/2.5BA with 1-year prepaid parking, office, finished basement, landscaped yard, fabulous sunroom, original refinished pine floors, built-in bookcases, custom kitchen.

130 SPRUCE 17B

\$649,000

Nice 2BD+den/2BA, views of the Delaware from the deck, new large kitchen w/granite, tumbled marble, cherry & porcelain, indoor parking, pool, community room, Pella windows throughout. Easy condo living!

730 LOMBARD

\$549,900

Wonderful contemporary 3BD/2.5BA townhome with 1-car deeded parking, hardwood floors, great closet space, separate office, lovely brick exterior, wood-burning fireplace, large private rear courtyard, central air.

200-10 LOMBARD #811

\$539,900

ABBOTT'S SQUARE - Extraordinary 2BD/2BA penthouse with fireplace, built-in plasma tv, recessed lighting, den/office, built-ins, spiral stairs, 500 sq ft deck with great views, 1 year prepaid parking.

521 PINE

FROM \$475,000

Three gorgeous condos, 1-2BDs, in a renovated historic mansion, featuring 1-' cathedral ceilings, high end kitchens, Duravit baths, bamboo floors, new energy efficient windows, 10 year tax abatement.

922 WAVERLY

\$315,000

Charming 1BD/1BA trinity with den, refinished hardwood floors, French doors to red brick yard, recessed lighting.

CALL MIKE McCANN
"The Real Estate Man"

For Personalized Service and Fast, Efficient Results.
Serving the Center City Community for 20 Years!



Prudential

Fox & Roach REALTORS®

215-627-6005 / 215-440-8345

www.mccannteam.com

An Independently Owned and Operated Member of
The Prudential Real Estate Affiliates, Inc.



Gail Finnegan



Francisco Carreno

Two Agents Working for You

**First Time Investor Seminars
&
First Time Buyer Seminars**

Every Month, Call or Email for Details.

Plumer 
& Associates, Inc.
Realtors
Philadelphia, PA 19147
215.922.4200 x 233

FC@CarrenoRE.com

RESOURCE GUIDE

Key Contacts

Center City District

660 Chestnut Street
Philadelphia, PA 19106
Paul Levy, President and CEO
215-440-5500
FAX 215-922-7672
Info@centercityphila.org

Center City Residents Association

1616 Walnut Street, Suite 705
Philadelphia, PA 19103-5308
215-546-6719
FAX: 215-501-5800
centercity@centercityresidents.org

Old City Neighbors Association

9 N. 3rd Street – P.O. Box 111
Philadelphia, PA 19106
215-440-7000
info@oldcity.org

Queen Village Neighborhood Association

P.O. Box 63763
Philadelphia, PA 19147
215-339-0975
FAX: 215-701-4202
info@QVNA.org

South Street Head House District

P.O. Box 63675
Philadelphia, PA 19147
David Hammond, Exec. Director
215-413-3713
FAX: 215-627-7035
Sshhd@aol.com

Washington Square West Civic Association

1209 Locust Street
Philadelphia, PA 19107
Judith Applebaum, President
215-545-3260
FAX: 215-545-9150
info@washwestcivic.org

Action Phone Numbers

Fire, Emergency and Police 911

Sixth District Police Station 215-686-3060
(for general information)

Sixth District Bike Patrol 215-787-7864

South St Police Mini-Station 215-922-6706
(for quality of life issues)

Sixth District Bike Patrol 215-787-7864

Police Information Center 215-386-2100

City of Philadelphia 215-686-3000

Mayor's Action Center
(information and complaints)

City Services

Abandoned Vehicles 215-683-2277

Animal Control

Animal Nuisance & Control 215-685-9054

Animal Cruelty 215-426-6300

Dead Animals 215-686-5560

Rat Control 215-685-9701

Insect Control 215-685-9027

Dog Licensing 215-685-LOST

Asbestos Complaints 215-685-7576

City Government

City Hall 215-686-1776

Phila Revenue Department www.phila.gov/revenue

Fairmount Park Commission 215-685-1835
(Trees)

Fire Hydrant Leaks 215-685-6300

**Graffiti Removal/
Anti-Graffiti Hotline** 215-685-9556

Health and Human Services

Health Commissioner 215-686-5000

Dept. of Human Services 215-686-6100

Mobile Mental Health Team 215-695-6440

Women Organized Against Rape 215-922-3434

Senior Citizen Help Line 215-765-9040

Homeless Issues 215-232-1984

Truancy Hotline 215-462-7693

Tobacco Sales to Minors 800-99-SMOKE

Youth & Gangs 215-685-9521

Drug Addiction Hotline 888-545-6200

Drugs Hotline 215-685-1145

South Narcotics Field Unit 215-685-4141

Poison Control Emergency 215-386-2100

Food Poisoning 215-685-7494

Health Department www.phila.gov/health

Historical Commission 215-686-7660
www.phila.gov/historical/

Homeless Intervention

In the neighborhood:
Mike Whaley at Hall Mercer 215-829-3540

Outside the neighborhood:
Project Home 215-232-1984

Police Department Homeless Issues and
Investigations 215-686-3095

Housing Complaints

Abandoned/Dangerous Buildings 215-686-2463

Public Housing Complaints 215-684-4001

Independence Branch Library 215-597-8974

Independence National Historical Park
(Washington Square) 215-597-8974

Lighting/Traffic Lights

Alley Lights 215-686-5516

Street Lights 215-686-5610 or 215-686-5560

Noise & Air Complaints 215-685-7580

Parking Authority Enforcement

9-5 p.m. 215-683-9600

Evenings and Weekends 215-683-9773

Parking Permit (Resident) 215-683-9730
215-973-9732

Handicapped Parking Signs 215-683-9741

Parking Authority www.philapark.org

Permits

Home Improvement Permits 215-686-2467

Temp. Construction Dumpster Permit 215-686-5500

Temp. No Parking Sign Requests 215-686-5525

Driveway Paint Permit 215-686-5560

Loading Zone Sign Permit 215-683-9742

Block Party Permits 215-686-3488

Fire Hydrant Sprinklers Permits 215-686-1391

Parade Permits 215-686-2489

Fairmount Park Picnic/Event Permits 215-685-0060

Licenses and Inspections www.phila.gov/li

Department of Recreation (District 10)
www.phila.gov/recreation/districts/district10.html

Sanitation Enforcement 215-685-4275

Snow

Un-shoveled Sidewalks 215-686-5560

Street Snow Plowing 215-686-5560

Snow Emergency Towing 215-686-SNOW

Street Repair and Potholes 215-686-5560
Streets Department www.phila.gov/streets

Trash/Litter/Recycling

Trash Collection 215-686-5560

Bulk Trash Pick-Up 215-685-4290

Emergency Trash Removal 215-685-4290

Tire Trash/Disposal 215-686-5189

Trash in Parks 215-685-0116

Hazardous Waste Drop-Off 215-686-5560

Sanitation Code Warnings 215-685-5618

Trash Dumped in Lots 215-686-2144

Illegal Dumping 215-686-5560

Overflowing Dumpster/Trash Can 215-686-3082

Dumpster Complaints 215-685-4275

Food Disposal Violations 215-823-7495

Recycling Office Hotline 215-685-7329

Recycling Bins 215-685-RECYCLE

Environmental Response Unit
www.ppdonline.org/rpts/rpts_sanitation.php

Utilities

Electrical Emergencies 215-841-4141

Gas Emergencies 215-235-1212

Water & Sewer Emergencies 215-592-6300

Water & Sewer Service/Problems 215-685-6300

Water Department www.phila.gov/water

Philadelphia Gas Works www.pgworks.com

Voter Registration 215-685-1505

In Society Hill Real Estate



One Name. One call.

Izzy Sigman

Philadelphia Board of Realtors
Diamond Award Winner

Outstanding service & results.
Every time.

Recent Sales

Murano #1407 2 Liberty Pl #4102
228 Locust St 615 Pine St
120 Delancey St

Current Listings

126 Delancey St Unit 225, Pier 5
343 S 4th St 339 S 2nd St

Call Izzy Sigman



215-922-3600 x 228 Office
215-806-6958 Mobile
226 South Street

Townhouse or Condominium

"We provide creative solutions to meet today's Real Estate Challenges"



Mary Genovese Colvin
Broker Associate

Margaux Genovese Pelegrin
Sales Associate

Over 29 years of residential experience
offering aggressive marketing for
your property.

Talk (215) 205-2400
Office (215) 521-1564

Talk (215) 806-1500
Office (215) 440-8198

For more information about our listings Visit Us:
www.MaryOnTheSquare.com



"The Lippincott" Society Hill
Custom Condominium/Doorman Building
2200 sq ft, 2 B/R, Library & Parking
\$1,760,000



Washington Square West
Franklin Manor Condominiums
Custom 1BR+Den
From \$299,000



Your Realtor® For
Buying A Home
& Selling A Home

Bari Shor

"Real Estate MatchMaker"

- Bari works harder.
- Works smarter.
- Cares and delivers on your Center City Home Ownership dreams.



Call me, Bari Shor, 215-790-5678
Prudential Fox & Roach Realtors®

At the Prudential Center, 210 N. 15th Street, Philadelphia, PA 19102 215-516-0550



Prudential
Fox & Roach REALTORS®

An Independently Owned and Operated Member
of the Prudential Realty Affiliates Inc.
215-893-9800

MEMBERSHIP NEWS

Stay In the Loop!

This community newsletter, distributed free to all Society Hill residents — whether SHCA members or not — always tries to keep neighbors current. Produced completely by volunteers and published every other month, the *Reporter* cannot always be as timely as we would like. However, through the use of e-mails we are able to share relevant news and information that can impact the quality of life we enjoy here. We, therefore, encourage all civic association members to include their e-mail addresses in our massive “group e-mail list” — which currently consists of about 1,000 households.

If you are a member but have not been receiving periodic e-mail messages containing the latest “news,” please share your e-mail address with SHCA’s Administrator, Matt DeJulio, who will be glad to add your name to the list.

At this time, if you are not yet a member for 2009, we urge you to fill out the adjacent application and join today! So stay in the loop and help support our wonderful neighborhood! Thank you!

Recommended Contractors List

If you are a current SHCA member (or soon plan to join), we will gladly send you a complete list of Society Hill’s Recommended Contractors, a free service for all SHCA members! Just contact Martha Levine — at 215-629-0727 or marthalev@msn.com — and she will share that list with you.

Did You Know?

Society Hill was recently named “one of the ten best neighborhoods in the United States” by the American Planning Association.

To learn more about this honor, please visit www.planning.org/greatplaces/neighborhoods/2008/societyhill.htm?print=true.

SOCIETY HILL CIVIC ASSOCIATION

Membership Application

Name _____

Address _____ Apt. # _____

City, State, Zip _____

Home Phone _____

Work Phone _____

Your E-mail (print clearly) _____

IMPORTANT: Today most everyone communicates via e-mail. Please be sure that we have your current e-mail address — so that you can receive important updates between publication of our community newsletter. All SHCA e-mails will be judiciously screened, and rarely will we send e-mails more than once a week. Nor will we share your e-mail address with anyone else. This convenient, 21st-century system helps save our civic association postage costs while keeping you regularly informed.

Residential Memberships

- \$ 1,000 Benjamin Franklin Benefactor
- \$ 500 Washington Benefactor
- \$ 300 Jefferson Benefactor
- \$ 150 Georgian Grantor
- \$ 100 Federal Friend
- \$ 50 Basic Household Membership
- \$ 40 Senior/Student

Business Memberships

- \$100 Institutions—
5+ employees
- \$ 60 Institutions—
fewer than 5 employees

Additional Contributions:

- \$ _____ Washington Square Beautification
- \$ _____ Sidewalk Cleaning/Graffiti Removal
- \$ _____ *Society Hill Reporter*
- \$ _____ Town Watch/Safe and Sound
- \$ _____ Zoning/Historic Preservation
- \$ _____ No Casinos Near Neighborhoods
- \$ _____ Franklin Lights
- \$ _____ Street Trees
- \$ _____ Three Bears Park

Total Enclosed \$ _____

Charge VISA/MasterCard:

Number _____ Exp Date _____

Signature _____

The following topics are of special interest to me. I welcome receipt of e-mail updates on these topics.

- Clean-Up Day
- Franklin Lights
- Dilworth House
- Reporter*
- Washington Square
- Social Events
- Property Taxes
- Casino Issues
- Zoning & Historic Preservation
- Fund-raising
- Stamper Square/NewMarket
- Local crime incidents & alerts

Please return completed application to:
Society Hill Civic Association
 P.O. Box 63503, Philadelphia, PA 19147

RESOURCE GUIDE

SHCA Business & Institutional Members

We encourage you to patronize these SHCA members:

Advertising, Public Relations

Domsky & Simon Advertising

Banks & Financial Institutions

Citizens Bank
CitiBank

Arts & Crafts

Creative Collective Gallery
Earthlight Images

Book Store

Head House Books

Dance Academy

Society Hill Dance Academy

Food Supplies

Nicholas Trantas

Graphic Design

Parallel Design

Hair Salons

Salon @ 5th

Healthcare

Pennsylvania Hospital
Pine Street Dermatology
Society Hill Veterinary Hospital

Historic Institutions/Museums

American Catholic Historical Society
Atwater Kent Museum
Philadelphia Society for
the Preservation of Landmarks

Hotels/Inns

Hyatt at Penn's Landing
Independence Park Inn
Omni Hotel
Sheraton Society Hill

Insurance/Finance

Ameriprise Financial (C. Stephano)
Bollinger, Inc.
Gannon-Coyne & Associates
Merrill Lynch
The Green Tree Perpetual
Assurance Co.
Philadelphia Federal Credit Union

Interior Design

J&L Designs
Weixler, Peterson, Luzi

Landscapers

Liberty Tree & Landscape Mgt.
McFarland Tree &
Landscape Services

Museums/Tourist Attractions

Lights of Liberty

Painters/Contractors

R. Chobert Decorating

Personal Trainers

Jason Bailey, personal trainer
Philly Fit (Don Bahr, trainer)

Pharmacy

Washington Square Pharmacy

Printers

Media Copy Center

Property Owners Associations

100 Lombard Owners Assoc.
Hopkinson House Owners Assoc.
Independence Place Owners Assoc.
Penn's Landing Condo Assoc.
Society Hill Towers Owners Assoc.
Willings Mews Assoc.

Realtors & Real Estate Developers

Allan Domb Real Estate
Prudential, Fox & Roach
Plumer & Associates
Plumer-Izzy Sigman
SUDI Ltd. Partnership

Religious Institutions

Episcopal Community Services
Historic St. Peter's Church
Mother Bethel A.M.E. Church
Old Pine Presbyterian Church
Old St. Joseph's R.C. Church
Society Hill Synagogue
St. Mary's Convent

Restaurants & Clubs

Bistro Romano
Downtown Club

Schools

Friends Select School
St. Mary's Interparochial School
St. Peter's School

Toys

Happily Ever After

Other Commercial Enterprises

David Bodoff
Lynda Brooks
Cal-20 Associates
Terri Grayboyes
Stephen Harmelin
Don Kates & Brian Gordon
National Watch
Philly Girl Friday
Pinot Wine Accessories
Posel Management
Scott Yorker
Carol Weinstock
Wireless Zone

We invite all local businesses, institutions, professionals and religious institutions to join SHCA, as our organization is the official voice for Society Hill.



Wireless Zone®

wireless
ZONE®

LEATHER CASES,
CAR CHARGERS,
INTERNET
CONNECTIVITY

verizon wireless
Authorized Retailer

322 South Street • 215-923-8255

THERAPEUTIC MASSAGE THERAPY



Greg DiTeodoro

B.S., CMT (Member ABMP)

Visit my website:
www.gditeodoro.neomassage.com
and read about the Benefits of Massage

Book appointment on website
OR call: 267 254-3463
gditeodoro@aol.com

Office located in Society Hill
(Gift Certificates & House Calls Available)



PCMS

PHILADELPHIA CHAMBER MUSIC SOCIETY

Stroll to Society Hill's Premier Concert Venue

BENJAMIN FRANKLIN HALL • 427 CHESTNUT ST. • AMERICAN PHILOSOPHICAL SOCIETY

**CAROL WINCENC, flute • HIROKO YAJIMA, violin • MARCY ROSEN, cello
LYDIA ARTYMIW & GILBERT KALISH, piano**

Sunday, January 11, 3 pm — Smetana • Haydn • Capanna • Wernick

An all-star cast unites for a wonderful afternoon of chamber music—highlighted by Smetana's G Minor Trio—evoking a poignant and tragic time in the composer's life and a world premiere by Robert Capanna.

DAEDALUS STRING QUARTET

w/ Michael Tree, viola • Peter Wiley, cello

Friday, January 16, 8 pm — Haydn • Stravinsky • Home • Brahms

"In the hands of such musicians as these in the Daedalus Quartet, the future of chamber music looks sunshine bright" (Toronto Star).

ERIC OWENS, bass • BRADLEY MOORE, piano

Tuesday, January 20, 8 pm — Schumann's song cycle Dichterliebe

Acclaimed for his commanding stage presence and inventive artistry, this American bass has carved a unique place in the opera world as both a powerful interpreter of classic work and a troubadour of new music.

CYNTHIA RAIM, piano

Wednesday, January 21, 8 pm — All-Schubert recital

A charismatic and versatile musician acclaimed for her sensitivity and ranges of color and texture, Raim is back by popular demand for another solo recital.

MUSICIANS FROM MARLBORO II

Wednesday, February 18, 8 pm — Janacek • Haydn • Brahms

Do not miss this exciting program featuring Brahms's beloved Clarinet Quintet — "The most exciting chamber music in the US" (Time).

CECILE LICAD, piano

Friday, February 27, 8 pm — Liszt • Chopin • Scriabin

A "pianist's pianist" (The New Yorker) Licad's artistry is a blend of daring musical instinct and superb training. Her recital concludes with the 4 Chopin Scherzos—offering patriotic Polish passion expressed on an epic scale.

GREAT DEAL: ORDER ANY 3 CONCERTS LISTED ABOVE FOR \$55
Call 215-569-8080 and MENTION THIS AD! [Offer Expires January 25, 2009]
TICKETS ONLY \$23 (Discounted Parking Available) 215-269-8080 | pcmsconcerts.org



Cecile Licad



Daedalus Quartet

2009 CALENDAR

Wednesday February 18

SHCA Board Meeting

7:30 p.m.

Location to be announced.

*Best Wishes for a
Happy, Healthy
New Year*



SOCIETY HILL

Reporter

- Keeping you informed about our community
- Delivered free to your door six times a year
- Produced by your neighbors – all volunteers
- Supported by local advertisers

www.societyhillcivic.org

Exercise & Socialize

Twice a week, no matter how cold the morning, several middle-aged Society Hill gals bundle up and meet at Three Bears Park to walk and talk. This welcoming group of neighbors usually consists of at least six or seven hearty souls — on any given Tuesday or Thursday — who can take the time to enjoy about an hour of good exercise and good company. This free, community-inspired “exercise program” requires no special skills — other than an interest in exploring the neighborhood’s streets and “hidden” alleys while also meeting and becoming friends with others who live nearby.

So, if you’re available at about 8 a.m. on any Tuesday or Thursday — when it’s not raining or snowing — just show up at Three Bears Park, introduce yourself and join the Walkie-Talkie team. Anyone who can participate is expected to arrive at the Delancey Street park no later than 8:10 a.m., because the group always begins to walk promptly by 8:15. On any given day, routes vary, as do participants.

Walkie-Talkies are still at it — in spite of the cold!

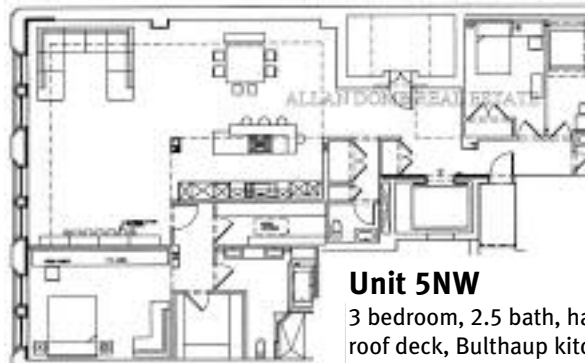


AD Allan Domb
Philadelphia's Largest Luxury Condominium REALTOR®

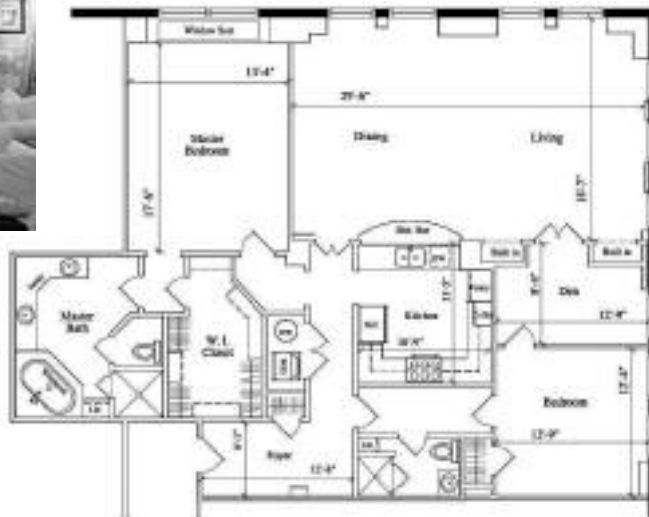
1845 Walnut Street, Suite 2200
Philadelphia, PA 19103
215-545-1500
www.allandomb.com



Featuring Two Listings at The Lippincott
227 S. 6th Street



Unit 5NW
3 bedroom, 2.5 bath, hardwood floors, roof deck, Bulthaup kitchen, custom contemporary home, 2932 sf.
\$2,495,000



Unit 1SE
2 bedroom + den, 2 bathroom, hardwood floors, custom kitchen and baths, high level finishes, 1936 sf.
\$1,250,000

