



SOCIETY HILL

# Reporter

July/August 2013

The Newsletter  
of The Society Hill  
Civic Association

[www.societyhillcivic.org](http://www.societyhillcivic.org)

## Get Out Your Calculators!

Philadelphia City Council has approved a 1.34 % property tax rate.

We've waited for months, and it has finally happened. Philadelphia City Council recently approved a 1.34 percent property tax rate under the Actual Value Initiative — the new tax system that is based on true market value rather than a predefined percentage.

### Do you disagree with your AVI assessment?

Unfortunately, it's too late to request that the Office of Property Assessment re-assess their valuation of your home. But all is not lost. You have until October 7 to appeal to the Board of Revision of Taxes, [www.phila.gov/brt](http://www.phila.gov/brt).

Assessment appeals should prove at least one of the following:

- Estimated market value of your property is too high or too low.
- Estimated market value of your property is accurate, but non-uniform with other homes in your area.
- Characteristics of your property that affect its value are substantially incorrect.

### Do you own your own home?

Council also approved the continuation of the Homestead Exemption, which reduces a home's taxable assessed value by \$30,000. This could mean an annual savings of up to \$400. A person must simply own the property and live in it as their primary residence. There are no other requirements.

To receive the Homestead Exemption for Tax Year 2014, applications must be received by September 13. You can now

apply in minutes, over the phone. Call the Homestead Hotline at 215-686-9200 or visit [opaphila.org/homestead/OPACconfirmation.aspx](http://opaphila.org/homestead/OPACconfirmation.aspx).

### Are you a low-income senior?

Apply for the Low-Income Senior Citizen Real Estate Tax Freeze. If your total annual income is \$23,500 or less for a single person, or \$31,500 or less for a married couple AND you or your spouse is 65 years of age or older, the City will not increase your real estate tax bill. The deadline to apply is October 15. For the form, go to [phila.gov/OPA/Documents/2014senfreeze.pdf](http://phila.gov/OPA/Documents/2014senfreeze.pdf).

### Are you a long-time homeowner?

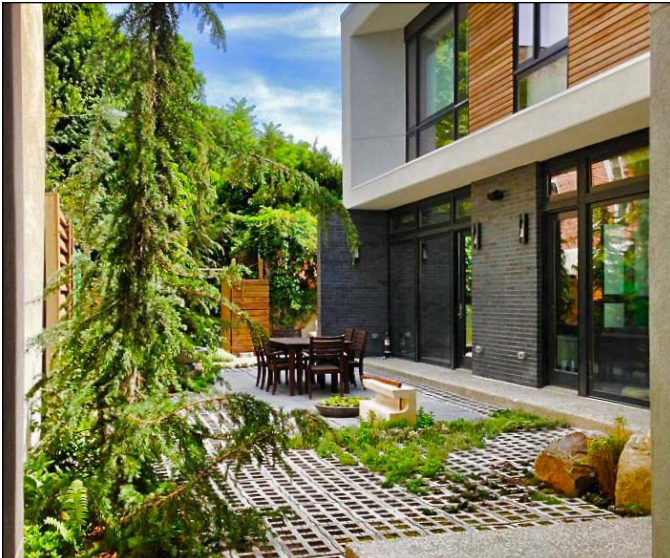
Darrell Clarke, City Council president, set forth an amendment that would allow long-time homeowners in gentrified areas to receive tax relief under AVI. Stay tuned.

## IT'S A GRAND OLD FLAG



## SUCCESS!

Thanks to SHCA Open House & Garden Tour Coordinators Martha Levine and Linda Skale, this year's tour was very successful! Look on pages 18-19 for more details and colorful pictures of the houses, gardens and tourgoers.



**MW** design group, llc

design / build / maintain

view our 2013 portfolio at

[mwdesigngroupllc.com](http://mwdesigngroupllc.com)

267.872.8814



SOCIETY HILL

*Reporter*

**Managing Editor**

Sandra Rothman

**Columnists**

Marilyn Appel  
 Claire Batten  
 Jane Biberman  
 Matt DeJulio  
 Martha Levine  
 Jim Murphy

**Contributors**

Chuck Groshong  
 Danielle Keperling  
 Garrett Smith

**Photographer**

Bonnie Halda

**Graphic Design**

Judy Lamirand  
[judy@parallel-design.com](mailto:judy@parallel-design.com)

**Press Release Liaison**

c/o Matt DeJulio  
[mattdejulio@aol.com](mailto:mattdejulio@aol.com)

**Advertising Manager**

Lenore Hardy  
[Hardy@drexel.edu](mailto:Hardy@drexel.edu)

**Submission Deadlines**

September/October Issue  
 Advertising: August 1  
 Editorial: August 3

**Society Hill**

**Civic Association**  
 P. O. Box 63503  
 Philadelphia, PA 19147  
 tel: 215-629-1288

**Website**

Find past issues of the *Reporter* with color photos at [www.societyhillcivic.org](http://www.societyhillcivic.org).

**Submissions**

We want to hear from you. Our goal is to print news of interest to Society Hillers – happenings in and around our community for residents, businesses and professionals. Direct your editorial submissions and/or queries to Sandra Rothman by phone at 717-715-5791 or email [sandra.rothman@aol.com](mailto:sandra.rothman@aol.com). To publicize an event, submit all press releases directly.

Materials must be submitted in writing – via mail or email – and must include the name of a contact person. Edited submissions will be considered for publication if the subject matter is community related and if space allows. Otherwise, upcoming events of interest may be listed in the Community Calendar. Letters to the Editor will be considered for publication only if signed and the writer provides contact information.

**Society Hill Civic Association  
 Board Officers and Directors**

**President**

Steven Weixler

**Vice President**

Jim Moss

**Secretary**

George Dowdall

**Treasurer**

Marc Feldman

**Directors-at-Large**

Bob Curley  
 George Kelley  
 Martha Levine  
 Kim Williams

**Northeast Quadrant**

2014 Lenore Hardy  
 2015 Heather Steiner  
 2016 Lisa Unger

**Northwest Quadrant**

2014 Sissie Lipton  
 2015 Diane Rossheim  
 2016 Amy DeMarco

**Southeast Quadrant**

2014 Jane Ahn  
 2015 Laura Temple  
 2016 Jeff Berry

**Southwest Quadrant**

2014 Francisco Carreno  
 2015 Marilyn Appel  
 2016 Daniel Horowitz

**parallel design**

Find our designs online.

**BeyondTheLibertyBell.org**  
**Parallel-Design.com**

215-476-4040

Logos  
 Websites  
 Banners  
 Brochures  
 This Newsletter!

P R E S I D E N T ' S M E S S A G E

# SHCA Welcomes New Board Directors

At our May General Membership Meeting, we welcomed new talent to our Board of Directors and expressed our thanks to several Directors who stepped down after serving our community well.

I am happy to report that Jim Moss has agreed to serve another term with us as Vice President. Jim's counsel is invaluable as our Board considers its actions on important issues. Another returning officer, whose work has had a major impact, is Marc Feldman, who will continue to serve as Treasurer. Marc's experience and ability have put our accounting and bookkeeping on a much better footing than we had in the past. The management and reporting of the SHCA's funds is a vital part of our work. I'm also pleased that George Dowdall has agreed to stay on as Recording Secretary. The documentation of our Board's activities is essential; we must maintain a record of clear and orderly proceedings to backup our advocacy for Society Hill.

Thank you, gentlemen, for your commitment to our community.

I would also like to thank our outgoing Directors for their service. Bernice Hamel, a longtime Board member and original editor of the *Reporter*, retired earlier this year. She is a tireless advocate and her talents are greatly missed. Lorna Katz Lawson, Lawrence Burstein, Mel Buckman and Bob Curley finished their terms as Quadrant Directors. Stacey Ackerman, representative for St. James' Court, also finished her term. At press time, St James' Court is seeking a new representative. The SHCA has been well-represented by these neighbors, and you have our thanks.

Bob Curley has accepted the post as At-Large Director. A particularly dedicated neighbor, Bob is one of the driving forces to our Clean-up Days. There are new Quadrant Directors offering fresh talent and perspective. Dr. Lisa Unger represents the Northeast Quadrant, Amy DeMarco the Northwest, Jeff Berry the Southeast and Daniel Horowitz the Southwest. Independence Place appointed Richard Salkowitz as representative.

For your information, our Quadrants are divided at the intersection of 4th and Spruce Streets. We find that each quadrant's specific needs benefit from this system.

I am looking forward to working with all; they are knowledgeable professionals with much to offer.

Our committees need volunteers to contribute their talents on a monthly basis. We want you!

Our Legal Committee needs attorneys who can contribute to the Committee's role of advising the Board on matters of legal issues.

In addition, we need help with the following committees. If you have the time and interest, please consider joining our Fundraising Committee, which raises money from the public or various agencies to fund ongoing projects, or the Strategic Planning Committee, which develops a long-range plan for SHCA.

Whether or not you've been engaged with us recently or in the past, we welcome all residents willing to participate in any of these committees or endeavors. Needless to say, without volunteers Clean-up Day would never occur; the *Reporter* would not get written or published; zoning and preservation issues would not be addressed; nor would there be plans for a playground at McCall School, and graffiti that regularly pops up throughout the neighborhood would not be removed. In addition, Welcome Baskets would not be presented to newly arrived Society Hill home and condo owners, nor would our Washington Square beautification project exist.

All of these are or have been volunteer projects accomplished by your neighbors, most of whom are SHCA members, and many of whom may be your friends. As residents of Society Hill, we each have a vested interest in what happens in our community. Although you may not support all the decisions this Board has made in the past or will make in the future, I do hope you can support our primary goal: to maintain and preserve this incredible neighborhood, a neighborhood made possible by dedicated folks who trusted the future, which they've left for us to live in and enjoy.



**Steven Weixler,  
President**

---

We want you!  
We each  
have a vested  
interest in our  
community.

---

In This Issue...

**Page 5**  
Bulletin Board:  
Welcome to New Directors

**Page 9**  
This Old House:  
Save Your Wood Windows

**Page 11**  
The British are Coming:  
The Victoria Freehouse

**Page 13**  
*Bubba, Zada* and the  
*Schmatta* Trade

**Page 17**  
Exploring the City:  
The Fairmount Water Works

**Page 18**  
Out and About: Open  
House and Garden Tour

**Page 31**  
Clip and Save  
Contact Information

**Page 34**  
Nifty Neighbors:  
Diana and Jim Burgwyn





**WPL**

WEIXLER PETERSON LUZI

INTERIOR DESIGN | WWW.WPLINC.COM | 215-592-9570



**COMMUNICATION MADE EASY**

**mediacopy**  
IMAGING YOUR VISION

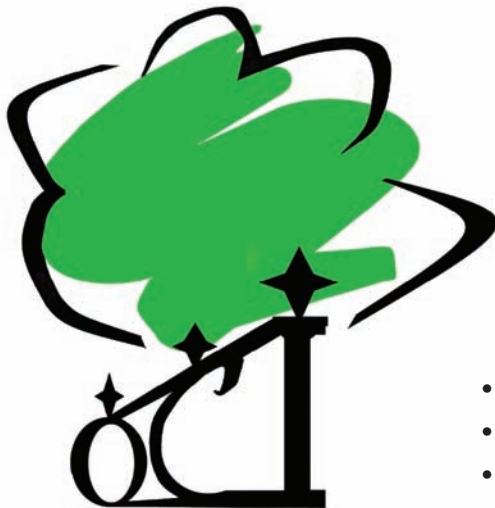
ON DEMAND PRINTING SOLUTIONS

Media Copy is a full service digital printing company with offices in Center City Philadelphia, and the suburbs. State of the art technology, extraordinary customer service and attention to detail place us apart from the competition. Our infrastructure allows us to provide our customers with high quality products in a cost effective fashion. From conception to completion, the basic to the complex, we are on the job with the personal attention you should expect.

**Philadelphia Location:**  
1310 Sansom Street · Philadelphia, PA 19107  
phone: 215.717.5151 · fax: 215.717.7400

**Media Location:**  
11 East State Street · Media, PA 19063  
phone: 610.566.8499 · fax: 610.566.4513

[www.mediacopyonline.com](http://www.mediacopyonline.com)



**OLD CITY IRON**

**TREE & LANDSCAPE**

Contact me today for a free estimate  
or to discuss future projects:

**Paul Morano**  
office 267-712-9624  
paul@oldcityiron.net

**NEED TREEWOR, LANDSCAPING, MASONRY OR IRONWORK?**

We do it all. Our specialized crews include some of the top individuals in the industry.

- Outer crown reduction techniques to keep trees and shrubs perfect size
- Removing the largest of trees in the tightest of spaces
- Educated in the etiquette of transporting debris through your house
- Insect/disease control & fertilization
- Designers and Builders to create and install your ideal outdoor living space
- Brick and Stone Specialists to restore the old or construct the new
- Stone, brick, pavers and wood patio and sidewalk options
- Design, Fabrication and Installation of decorative Ironwork
- Rapidly becoming Philadelphia's favorite iron tree pit fence company

We accept all major credit cards.

[www.oldcityiron.net](http://www.oldcityiron.net)



# Bulletin Board

## Meet Our New Directors!

### NE Quad — Lisa Unger, M.D.

Originally from New York City, where she studied medicine at NYU, Lisa has lived in Society Hill for the last 26 years with her husband, Ken Fleisher. After 25 years of practice at the Hospital of the University of Pennsylvania (HUP) in internal medicine, focused on preventative medicine and nutrition, she has retired and is working to give back to the neighborhood. In 2011, she launched "Society Hill, Hot and Healthy," a free, community-based medical speaker series with the goal of empowering people to make good decisions about their health by providing up-to-date health information. In addition, Lisa introduced "Philly Is Walking In The Park!" — a self-paced walking group in Washington Square.

### NW Quad — Amy DeMarco

Born and raised in Philadelphia, Amy spent most of her career doing public relations for the Penwalt Corporation in Philadelphia and Cigna's health care businesses in Bloomfield, Connecticut. After eight years in New York City, part of it working for Legal Momentum (a non-profit women's rights organization), Amy and husband, Jim Giblin, returned to Philadelphia. In 2004, they purchased a home in Society Hill, and Amy became secretary of the Penn's Landing Townhouse Association. Last year, they sold their home and now live at the St. James.

### SE Quad — Jeff Berry

Jeff moved to Society Hill in 2012 from Hamilton, Massachusetts. He works in asset management and marketing; his wife, Frances Jensen, M.D., is a neurologist at HUP. Both love historic homes and chose a historic house here in Society Hill. Since their arrival, they have been eager to support the neighborhood and have already attended several of our events. Despite a busy schedule, Jeff finds time to work as a volunteer helping youth sports teams and is on his country club committee.



**Our new directors (l to r): Dr. Lisa Unger, Amy DeMarco, Jeff Berry, Richard Salkowitz and Daniel Horowitz**

### Independence Place — Richard Salkowitz

A lifetime Philadelphian originally from East Falls, Richard has lived at Independence Place since 2002 with his wife, Susan. He has more than 45 years' experience with large public and private companies as an executive in the areas of risk management, insurance, human resources and employee benefits. Richard has served on the governing boards of several for-profit and nonprofit organizations. Richard and his wife have been members of SHCA since moving to Society Hill, and have a deep interest in keeping the neighborhood clean, safe, desirable and livable.

### SW Quad — Daniel Horowitz

Daniel moved to Society Hill in 2006 and is an active member in the community. He currently practices employment litigation with Swartz Swidler, LLC with a focus on Collective Class Actions. For the last few years, Daniel has been an active member of SHCA's Zoning and Historic Preservation Committee. He is on the Alumni Advisory Board for City Year Greater Philadelphia (an Americorps program). Daniel is a former member of the Public Awareness and Civic Engagement Committee for Philadelphia's 10-Year Plan to End Homelessness. He also belongs to the Green Committee for LL63, a Neighborhood Development Corporation for West Philadelphia, where he helped shape homeless and green policies for the city.



**Bob Curley supervises electronic recycling service on Spring Clean-Up Day.**



**Sissy Lipton oversees volunteers who are planting annuals in Washington Square.**



# Garden Accents

*Elegant Ornaments for  
Outdoor Living*

**We Bring the World to You**

*Shop From Our  
Amazing Eclectic  
Inventory*

*Experience Unparalleled  
Customer Service*



ELIZABETH SCHUMACHER'S  
**GARDEN  
ACCENTS**

Tues-Sat 10 am - 5 pm  
Closed Sun & Mon

4 Union Hill Road  
West Conshohocken

[www.gardenaccents.com](http://www.gardenaccents.com)



STUDIO NINE

**Kids**

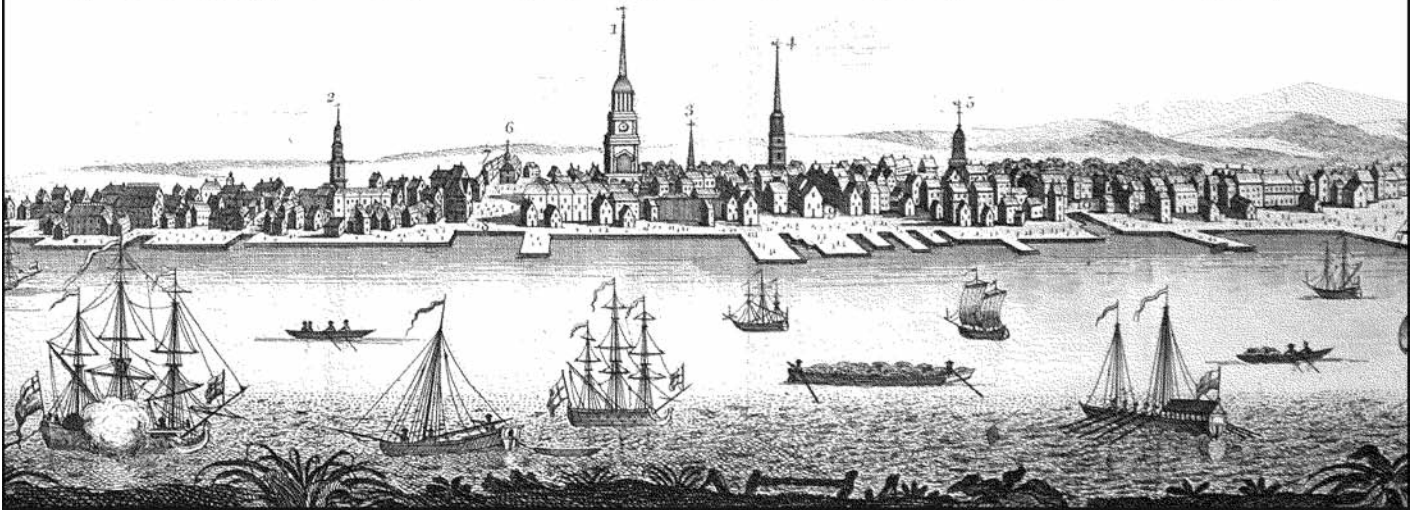
PHOTOGRAPHY



[studioninekids.com](http://studioninekids.com) 215.238.0404

# Arader Galleries

*Specializing in Antique Engravings & Rare Maps of Historic Philadelphia*



1308 Walnut Street, Philadelphia, PA 19107

Open Mon.-Fri., 10am-6pm & Sat., 10am-5pm • (215) 735-8811

**SPRING CLEAN-UP DAY**

## We've Cleaned Our Blocks

Rain showers did not put a damper on this year's Spring Clean-Up Day. More than 20 adults and children spruced up the 500 block of Spruce Street, working in unison to sweep the sidewalks and gutters on the south side of the street, then, like finely choreographed dancers, switching to the north side. All the hard

work was rewarded with freshly baked pastries and beverages. Over in Three Bears Park, moms, dads and kids did the same, rewarded with pizza and drinks. And on the 300 block of Delancey Street, Carolyn Evans rounded up the neighborhood kids and put them to work.

As Garrett Smith, block coordinator, said, "Over the past four years, friends and neighbors have come to really enjoy seeing one another, catching up and working as a team to clean up our block. Neighbors say it's not officially spring until we've had our group block cleanup."

We highly encourage other blocks to give it a try.



**300 block of Delancey Street**



**Clean up in Three Bears Park**



**500 block of Spruce Street**

**MEMBERSHIP WITH BENEFITS**

## Two More Reasons to Join SHCA

Most neighbors join the Society Hill Civic Association (SHCA) to support this organization that does so much for our community, both in quality-of-life issues, such as graffiti control, weekly sidewalk cleaning and neighborhood improvement projects, as well as advocating on our behalf on a variety of important issues.

Now there are two more reasons to turn to page 33 in this issue and fill out the membership form!

Hotel Monaco, located in the historic Lafayette Building at 433 Chestnut Street, is offering a 20-percent discount off their best available rates to all SHCA members, just in time for all of those out-of-town visitors. When booking, mention code SHCA. For more information, call 215-925-2111 or visit [www.monaco-philadelphia.com](http://www.monaco-philadelphia.com).

In addition, all members who renew at the \$100 Federal Friend level or above will receive a copy of the summary version of the Philadelphia Historical Commission's Register of Buildings in the Society Hill Historic District. See page 33.





All Gloria Dei's venerable trees remained standing in Hurricane Sandy, preserving the historic graves below.

## HISTORIC TREES UNHURT IN HURRICANE SANDY

... Thanks to Liberty Tree & Landscape Management

When Hurricane Sandy pummeled the city in late October, 2012, not one of the many 200+-year-old trees at Gloria Dei Church on Columbus Blvd. came down. Pastor Joy Segal credits that feat to the outstanding work of Liberty Tree and Landscape Management.

See why so many people recommend Liberty Tree on Angie's List. *Your satisfaction is guaranteed!*

### Some Other Liberty Tree Clients:

- Pennsylvania Hospital*    *Elfreth's Alley*
- Rittenhouse Square*    *National Park Service*
- Washington Square*    *Bartram's Garden*
- Philadelphia Cricket Club*



215-886-6111

[www.libertytreecare.com](http://www.libertytreecare.com)

**NEW-CUSTOMER SPECIAL: SAVE \$200**

Call 215-886-6111 by August 31, 2013, for a free, no-obligation consultation. If your property requires at least half a day's work, you'll receive \$200 worth of fertilization for your street tree, free of charge!

**Go Fish!** *Fresh and LOCAL Every Day!* READING TERMINAL MARKET

*Golden Fish*

*John Yi Fish*

*Wan's Seafood*

**READING TERMINAL MARKET**  
 MON-SAT 8-6 • SUN 9-5 • \$4 PARKING • 12TH & ARCH STREETS • 215-922-2317  
[www.readingterminalmarket.org](http://www.readingterminalmarket.org)

*Wood Mode*  
FINE CUSTOM CABINETRY

For the Experience  
 ... in design, project management and construction

**TEKNIKA**  
 DESIGN GROUP  
 Kitchens — Baths — Custom Cabinetry

215-922-4414  
[www.teknikadesigngroup.com](http://www.teknikadesigngroup.com)  
 225 Race Street  
 Philadelphia, PA 19106

5% off cabinetry with this ad!



THIS OLD HOUSE

## Save Your Wood Windows

**D**id you know that historical wood windows are one of the most vulnerable and at-risk elements of our architectural heritage?

Preservation Virginia has proclaimed historical windows endangered, saying, “Historic wooden windows are destroyed daily in lieu of new, inferior windows. Salesmen convince owners and architectural review board members that replacement windows are superior to historic wooden windows **when the truth is, these historic windows can last longer than any new wooden window or vinyl-clad window.**”

Despite this, windows don’t often have a high priority on the list of things we should preserve in our built history. Yet they should. If eyes are windows into the soul, as the old adage goes, then surely windows are how we see into the soul of a historical building.

Windows are an important component in a historical building’s appearance. Not only are they one of the few parts of a building that serve as both an interior and exterior architectural feature, they usually make up about a quarter of the surface area of a historical building.

Many aspects of windows contribute to a building’s architectural style and historical fabric — height, width and thickness of frames and sills, the visual design of sash components, the materials and color treatments used, and even the way light reflects off of the glass.

Muntins, historical glass, putty beading, moulding profiles, glazed opening widths and regionally specific patterns and features

are more distinct characteristics of original wood windows that contribute to a historical building’s façade. And all of these varied between architectural styles and periods and from region to region, making wood windows living artifacts from history — an archeological gold mine that helps us understand and document historical building practices and craftsmanship.

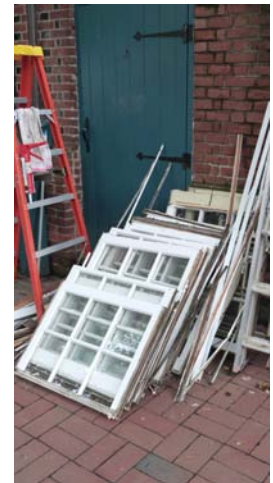
These features and variances can be difficult to duplicate with modern technology. Today’s manufacturing and installation process is significantly different than the process used hundreds of years ago. The characteristics imparted by modern machinery and installation techniques create an entirely different window than the traditional building methods created when the building was originally constructed. Such a loss of historical elements is a permanent scar on a historical building.

Replacing original wood windows also often requires changing the window’s rough opening to install a window manufactured on national standards to the non-standard opening of a building constructed during a time when there were no building standards — another mistake that permanently damages a building.

Throwing out the artifacts from our built history that stand testament to how buildings have been constructed over the last several hundred years prevents future generations from gaining a deep understanding of a piece of history that’s just as important as the knowledge we gain from all the other artifacts we work so hard to preserve.

Just as we shouldn’t replace our historical art with modern replicas, we shouldn’t replace our historical wood windows with modern replacement windows. Because once they are gone, they are gone for good.

To download “Put Replacement Windows to Shame: 10 Tools to Make Your Historic Wood Windows Last for Generations” visit: [historic-restorations.com/put-replacement-windows-to-shame-report](http://historic-restorations.com/put-replacement-windows-to-shame-report).



Beyond their importance in contributing to a building’s appearance, windows play an important role in how the building functions. Perhaps one of the most important of those functions is how windows serve as an integral part of a historical building’s design to “breathe” moisture. Historical buildings function as cohesive, whole systems to handle moisture infiltration. The original design, installation and materials used — including, and especially, the windows — were all picked for the building’s specific system.

**Changing windows can significantly affect how a home handles moisture — a road that no homeowner wants to travel.**

### NPS STANDARDS

The National Park Service’s Standards and Guidelines for Rehabilitating Historical Windows recommends not:

- Removing windows important to historical character
- Changing location or size of windows
- Inappropriate designs, materials and finishes
- Destroying historical materials
- Replacing windows that can be repaired
- Failing to maintain
- Replacing instead of maintaining
- Inaccurate historical appearance

Experienced Father/Daughter preservation team Chuck Groshong and Danielle Groshong-Keperling own and operate Historic Restorations, a construction firm that specializes in historic buildings. Chuck and Danielle will write an occasional column for the *Reporter* dealing with the joys and tribulations of restoring historic homes. Please contact the *Reporter* with specific issues, and our father/daughter team will be glad to address them.

# ADORNAMENTI

1106 Pine Street  
215.922.2722

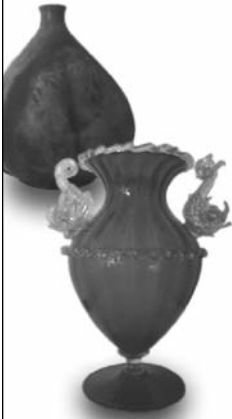
**Collection  
of  
Art-To-Wear Jewelry**



## SHOW OF HANDS

1006 Pine Street  
215-592-4010

**Collection  
of  
Mid-Century Murano Glass  
and  
Contemporary Crafts**



We contribute to Welcome Basket.  
We are located on Historic Antique Row.

# GRAND OPENING

CHEMISTRY  
RX



**Medication solutions for your unique needs**

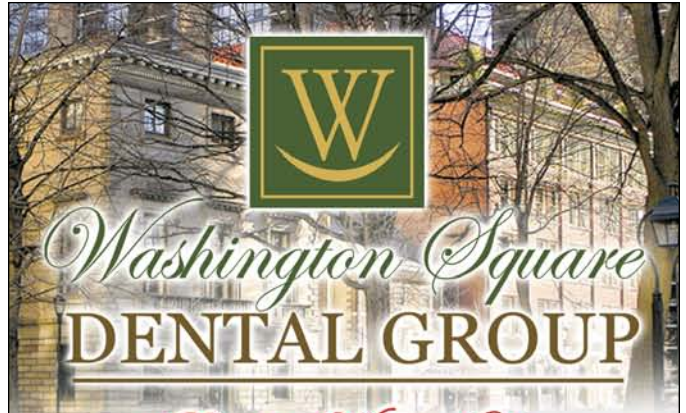
Compounding Solutions  
for:

- Pain Management
- Neuropathies
- Dermatology
- Exercise & Sports Injuries
- BioIdentical Hormone Replacement
- Pediatric Needs

Unique Dosage Forms:

- Sublingual Troches
- Medicated Lollipops
- Transdermal Creams
- Capsules
- Suppositories
- Enemas & Creams
- Nasal Sprays
- Oral Suspensions

829 Spruce Street, Suite 100  
Philadelphia, PA 19107  
(Across the street from PA Hospital)



## Washington Square DENTAL GROUP

*is Proud to Welcome You  
in the Heart of the Historical Old City!*

**Dr. Vine DMD - General Dentist / Endodontist**  
**Dr. Morgan DMD - General Dentist**  
**Dr. Bandelac DDS, MS - Board Certified Periodontist**

**We are committed to providing  
superior dental care  
for all your needs under one roof!**



- OUR OFFICE PROVIDES  
COMPREHENSIVE SERVICES IN:**
- **Modern Cosmetic Dentistry**
  - **Root canal treatment**
  - **Implant restoration**
  - **Broad array of teeth whitening methods**
  - **Invisalign - a modern approach to braces (FREE Consultation)**
- Complimentary DENTAL EXAM  
for all patients without insurance.**

**604 S. Washington Square,  
Philadelphia, PA 19106  
215.627.0777**

[www.dentalgroupwashingtonsquare.com](http://www.dentalgroupwashingtonsquare.com)



PHILLY FOOD LOVERS

BY CLAIRE BATTEN

# The British Are Coming... to Old City

The Victoria Freehouse is an English pub that recently opened on the borders of Old City, within walking distance of Society Hill. As a Brit (who just earned her American citizenship this spring), I feel well placed to write a review about this latest addition to the local eating scene.

Owner Edward Strojan, also proprietor of The British Chip Shop in Haddonfield, New Jersey, informs diners that British fare, with its connection to the land, is “the original comfort food, quiet, straightforward and simply good.”

The Freehouse’s decor references an old-fashioned English pub with its bar stools, reclaimed church pews and polished wooden tables. However, unlike the traditional dark and dreary English pubs, light streams through from the front. The service was equally breezy and attentive, but we were eating early, so our server was free to focus exclusively on our table.

The menu was an interesting collection of genuinely British “pub grub” (informal food served in a public house), plus some free-spinning interpretations of that fare. The pub grub includes old-time favorites, such as shepherd’s pie (made with minced lamb and root vegetables as it should be, not with minced beef as it is served too often), Scotch egg (don’t ask) and beetroot-cured, pickled eggs.

Even though the Victoria Freehouse is more of a gastropub, with its wide and varied menu of high-quality riffs on homey original pub favorites, I couldn’t help but try the more traditional curry sauce and chips. In this instance, “chips” are deliciously thick-cut French fries, not potato chips, drenched in a curry sauce. This thin, hot and piquant sauce is a strange, yet addictive, legacy from the days of the British Empire.

My foodie partner, Keri, decided to try the fish and chips. The batter was authentically crisp, and we were delighted to see original Sarsons Malt Vinegar and English mustard served as the condiments. Details matter!

Our other guest opted for a Stilton burger (a burger served with a fiery English blue cheese) and declared it to be superb. Again, the thick-cut chips were a hit. The Guinness burger sounded exciting, but we’d already cast our votes elsewhere.

Stuffed to the brim, my fellow lunch-mates declined the dessert menu, which carried favorites such as bread and butter pudding, sticky toffee pudding, lemon curd tart with clotted cream and a rhubarb and ginger fool. Familiar with the first three options, I chose the rhubarb fool, and I think this was the only disappointment in the meal.

The fool, normally a light, whipped-cream concoction, was just a tad too heavy for my taste. Although the ginger and rhubarb combination worked beautifully, the custard was different from what I was accustomed to. Still, this wouldn’t stop me going back there to try more of the Freehouse’s pub grub fare. And I plan to take the rest of the family next time.

We heartily endorse the pub grub served herein. As it was lunchtime, we didn’t get a chance to savor the English beers on offer. But the plan is to revisit with my Belfast-born husband (also a U.S. citizen) to check out their authenticity.

According to the UK’s *Guardian*, in its article “How to Make a Perfect Rhubarb Fool,” “A fool is arguably the finest British summer dessert.” They go on to inquire, “Are you a custard fool, a cream fool, or some other kind of fool entirely?”

Personally, I vote for the frothy, insubstantial fool! Here’s Felicity Cloake’s recipe, as first published in *The Guardian*.

**The Victoria Freehouse**  
10 South Front Street  
215-543-6089  
www.victoriafreehouse.com

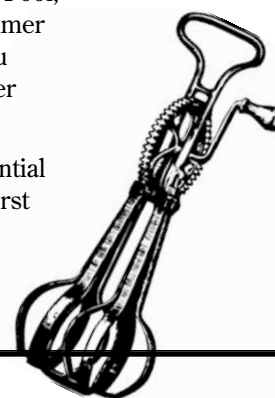
THE VICTORIA




FREEHOUSE™

**A Free House, in contrast to a Public House (a “Pub”) in England, is not associated with any one brewery and can therefore serve beers from various breweries.**

“A fool is arguably the finest British summer dessert.”



Rhubarb Fool	Serves 4
<b>16 oz rhubarb, roughly chopped</b>	1 Put the rhubarb in a pan with 4 tbsp sugar and heat gently, covered, until tender. Uncover, turn up the heat slightly, and allow some of the juice to evaporate. Taste for sweetness, adding more sugar if necessary, then drain the rhubarb, reserving the juice. Cool.
<b>5 tbsp golden caster sugar</b>	
<b>10 oz double cream</b>	
<b>3.5 oz Greek yoghurt</b>	2 Whip the cream until it forms soft peaks, then stir in the yoghurt. Fold in the cooled rhubarb, and chill for at least an hour.
<b>small bunch of mint, leaves only</b>	
	3 Serve in glasses with the reserved juice to pour over the top, and a few mint leaves on each portion.




**Russ Whelan**  
DOORS & ACCESS SYSTEMS

- Expertise in residential, industrial and commercial service and installation
- Broad range of door styles and types for any need
- Over 32 years of service in the Greater Philadelphia Area

**Contact us today for a free consultation for your garage door repair and installation**

215.639.6220  
whelandoors.com

**BRING US YOUR TIRED, YOUR HUNGRY, YOUR FAMILY**



ENJOY 20% OFF OUR BEST AVAILABLE RATE WITH BOOKING CODE SHCA

**CALL 855.295.BELL TO SECURE RESERVATIONS**

Not valid with any other offer. Some restrictions may apply. Subject to availability.



433 CHESTNUT STREET • PHILADELPHIA, PA 19106  
855 295 BELL RESERVATIONS  
MONACO-PHILADELPHIA.COM

**RED OWL TAVERN**

We offer a complete line of services to care for your property.



## Complimentary Consultation

By Peter McFarland, Certified Arborist, MA-0164A

Call our office at **215-844-TREE** to make an appointment for a consultation to review your property.

***Tree & Shrub Healthcare***

- Custom Tree Pruning
- Tree Removal
- Cabling & Bracing
- Insect & Disease Management

***Landscaping***

- Planting Trees
- Planting Gardens
- Custom Shrub Pruning

***Sidewalks***

- Brick Replacement



**www.mcfarlandtree.com**






## THE JEWISH QUARTER OF PHILADELPHIA

PART TWO IN A SERIES BY SANDY ROTHMAN

A Good Fit: *Bubba, Zada* and the *Schmatta* Trade

Genealogy is a pastime full of surprises. Who would have guessed that all four families comprising my son Alexander's paternal lineage settled in Society Hill at the turn of the 19th century, an area known for a short time as the Jewish Quarter of Philadelphia?

Records show that Emanuel and Rose Bauman, both in their early twenties, arrived on American Street in 1891 with two toddlers and almost no money. Obviously Emanuel's most immediate concerns were finding housing and employment. Like many of his compatriots, he spent his last few dollars for a peddler's box and the goods to fill it. Just like that, Emanuel became part of a market revolution that was transforming America.

Peddling was less a career, however, than a starting point: it served as the standard business apprenticeship for able-bodied young males looking to ascend the economic ladder to success. Some succeeded handsomely; most of the great Jewish store magnates began as peddlers. As for Emanuel, census records show that by 1930 he owned his own tailor shop.

When 49-year-old Leiser Fischelmann fled Otik, Bessarabia in 1900, he brought with him 12 dollars, his wife, their eight children and their respective families, plus the determination to forge a new life in the New World. Within a year, this former tanner transformed himself into Louis Fisher — a pants presser whose sons were cutters, basters, finishers and machine operators in the Philadelphia garment industry. One child, Jacob, eventually became a dress designer.

The deeper I dug into Alexander's family tree, the more connections I found to the so-called "rag trade." What was the big attraction to the garment industry, I wondered? I learned that European Jews actually had special connections to this line of work. Some were religious: for instance, Jewish law forbade individuals from combining wool and linen fabrics in one garment, so many Jews were used to making their own clothing. Others were political: Anti-Semitic laws requiring Jews to wear distinctive garments were another contributing factor to their dominance in the clothing industry. And then there were economic factors: pawnbrokers were traditionally Jews, and some tailoring knowledge was needed to keep pawned clothes in good repair for resale.

It is more than probable, of course, that Louis and his sons were not expert garment workers when they debarked at the Washington Avenue Pier. Fortunately, the trade comprised many small tasks that were learnable in a few weeks and could be done at home.

Through what was known as the "sweating" system — from which we get the word "sweatshop" — Louis and his fellow immigrants could hire themselves out as basters, pressers, finishers, zipper installers and buttonhole-and-pocket makers to small contractors, who got their marching orders from the manufacturer that provided the cloth. The contractors' profits were low and, therefore, so were wages. Hours were also extremely long and took place in terribly close quarters. Conditions were ripe for exploitation.

Yet for Louis there were advantages to the sweatshop system. He could communicate in his own language. The work, however arduous, did not prevent his performance of religious duties, observance of the Sabbath or celebration of religious festivals. Moreover, Louis felt that he could preserve the integrity of his family by having family members work together.

It would appear that the *schmatta*, or rag trade, was good for Alexander's ancestors. It gave them an immediate source of income, as well as easing them into Philadelphia's social fabric. Interestingly, there is not one tailor in the family today. Various documents show them gradually climbing the economic ladder, leaving the garment industry behind. Amazingly, Abram Trachtenberg's son Bernard attended college in Iowa as early as 1915. Later he was sailing ships as chief engineer — a great example of the American Dream!

So my next question is, did all work and no play make *Zada* a dull boy? Apparently not, as I'll discuss in the next issue.



**In 1895 there were purported to be nearly six hundred sweatshops within one mile of what is now the Society Hill Synagogue. Many were also the workers' homes.**

Note: *Bubba* is Yiddish for grandmother, *Zada* is grandfather and *schmatta* means rag.

**PHILADELPHIA  
WINDOWBOX COMPANY**



info@philadelphiawindowboxcompany.com  
www.philadelphiawindowboxcompany.com

**ACTION  
BUILDERS  
AND REMODELERS**

Licensed and Insured. Quality, Dependable Service since 1975.  
EPA Certified Lead Safe Renovations, Kitchens, Baths, Rehabs.

215-389-3100 HandymanAction@aol.com  
www.HandymanAction.com

**Howard J. Goldblatt**  
GENERAL CONTRACTOR, INC.

**Historic Restoration**  
**Kitchen, Bath, General Renovation**  
**Window Replacement**  
35 Years Experience  
References Available

610-642-1834 hggc@verizon.net

Philadelphia License #398432 | Pennsylvania License #20665 |



**Old Pine Street  
Presbyterian Church**

Please join us for worship  
**Sundays at 10:30am**  
Nursery Care Available  
Sunday School  
Ages 3 - grade 8

412 Pine Street  
215.925.8051  
www.oldpine.org

**R. Chobert Decorating Co.**

*Painting/Wallcovering*  
*Interior/Exterior*  
*Creating Beauty Since 1967*

**Rupert Chobert**

641 Reed Street  
215.389.7788 TEL  
267.977.7443 CELL  
215.755.6655 FAX



**Patricia Bentz CPDT-KA, CDBC, CNWI**  
Certified Dog Trainer & Behavior Consultant

*"Going to the Dogs"*

**K-9 Training & Behavioral Therapy**

- One-on-One Obedience Training at Home
- Behavioral Consultation
- Puppy Head-Start
- Nose Work Group Classes



(215) 551-5254  
Queen Village

Hours by Appointment

Gift Certificates Available



**Gerry Pascal, CPE**  
Board Certified Electrologist  
Licensed Aesthetician

Permanent Hair Removal & Skin Therapy

By Appointment  
(215) 704-5555

525 South 4th Street, Room 478  
Philadelphia, PA 19147

**Electrolysis • Waxing • Facials**

**UHURU FURNITURE  
& COLLECTIBLES**

We Pick Up  
**Furniture Donations**  
Fast • Free • Tax-Deductible

Professional movers remove furniture from your home

**215-546-9616**

100% of the profits benefit the  
African People's Education and Defense Fund  
apedf.org • uhurufurniturephilly.blogspot.com



## ON OUR SHELF

## Philadelphia Reflections

Immerse yourself in Philadelphia this summer! Here's an interesting selection of books focusing in various ways on our fair city. All are available online at amazon.com.

**A Portrait of Elizabeth Willing Powel (1743-1830)** by David Maxey, Transactions of the American Philosophical Society, 2006

Using intuition, common sense and scholarly research, author David Maxey has written a delightful whodunit mystery, attempting to unlock the secrets to the origins of a portrait of Elizabeth Willing Powel, wife of Philadelphia's first mayor. Maxey has focused attention on an enigmatic painting that has long puzzled art historians and the person portrayed in it — a woman of talent and verve whose life has remained obscure.

Elizabeth Willing Powel occupied an influential position in Philadelphia society during and after the Revolution. She presided over a salon, spoke her mind freely and maintained an extensive, illuminating correspondence. Elizabeth was the trusted confidante of the country's first president, whom she did not hesitate to instruct. Personal loss touched her deeply, and at a critical moment, the Philadelphia painter Matthew Pratt was commissioned to capture on canvas the grief she experienced. What happened to the portrait Pratt painted becomes an essential part of the mystery that Maxey has successfully undertaken to solve.

This monograph, with color plates, will fascinate art historians as well as early American historians.

**Fading Ads of Philadelphia**

by Lawrence O'Toole, The History Press, 2012

Author Lawrence O'Toole, in this evocative work, reminds us that a city's faded painted advertisements — the ghosts of a lost urban landscape — are history in plain sight. They are tangible ways to tell the stories of changing neighborhoods, industries and ways of life.

There aren't many advertising practices that have been in use longer than that of the sign, whose history is nearly as old as the history of civilized man, spanning some 5,000 years. It is fitting then to discover that display advertising in Philadelphia is at least as old as, if not older than, our very nation. Even before printing became common practice throughout the colonies, hand-lettered signs and carved symbols were used by businesses to advertise their wares.

Turn-of-the-century photographs of Philadelphia storefronts on Market Street and Broad Street show buildings blanketed in signage and lettering, advertising wares and services. Every window, every column and every flat expanse of brick was put to use, and even the roofs held dimensional metal signage.

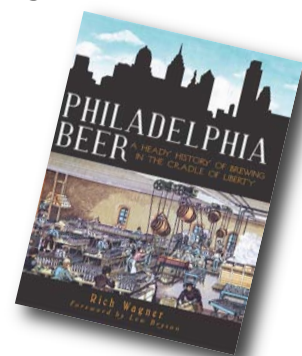
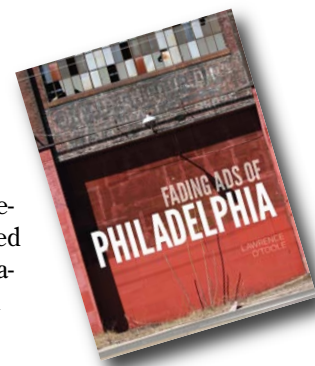
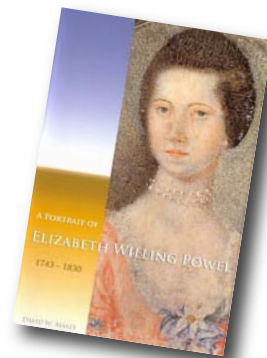
Today, many faded ads are visible around the city, dating from the late 1800's through the 1960's: weathered, painted signs heralding an obsolete product, an outdated trademark or a clue as to a building's history. In many cases with older signs, white is the only color remaining — as the white lead paint deteriorated more slowly than the other colored paints used in the sign-making process.

They have been called "ghost signs," a term that's doubly appropriate. Some faded ads can reappear on walls when the light is just right, after a rainstorm, or when the viewer has observed the sign long enough to decipher what at first seems to be unintelligible remnants of paintbrush strokes. There's also the phenomenon of rediscovering painted advertisements that were obscured or completely covered by an adjacent building and forgotten. A restoration or demolition suddenly reveals them again in vivid color or detail, if only for a short while — the aesthetic equivalent of seeing a ghost.

**Philadelphia Beer: A Heady History of Brewing in the Cradle of Liberty**

by Richard E. Wagner, The History Press, 2012

The finely aged history of Philadelphia brewing has been fermenting since before the crack appeared in the Liberty Bell. By the time thirsty immigrants made the city the birthplace of the American lager in the 19th century, Philadelphia was already on the leading edge of the country's brewing technology and production. Today, the City of Brotherly Love continues to foster that enterprising spirit of innovation with an enviable community of bold new brewers, beer aficionados and brewing festivals. Pennsylvania brewery historian Rich Wagner takes readers on a satisfying journey from the earliest ale brewers and the heyday of lager beer through the dimly dry years of Prohibition and into the current craft-brewing renaissance to discover and celebrate the untapped history of Philadelphia beer.



**ZAKTi**  
Balanced - Sustainable - Intelligent  
Therapeutic - Preventative Fitness

- + Personal Training
- + Small Group Training
- + Open Classes

Take a balanced approach to Health and Well Being.

STOP IN - 410 Monroe Street  
CALL TODAY - 267.639.2366  
VISIT US ONLINE - Zaktionline.com

Maps

One major **city in the world** is located on two continents. Do you know which?

**FRIENDS SELECT**  
The Center City Quaker school that inspires fascination.  
[friends-select.org](http://friends-select.org)

## HOW SMART MARKETERS MAKE MORE MONEY



They do **Payoff Marketing™**...  
with Jim Murphy\*



Jim Murphy, a direct marketing copywriter who's sold millions of dollars worth of products and services for companies by direct response, specializes in marketing that pays off ... for marketers.

### Words that work

If you want to sell a product or service by direct mail, e-mail, print ads or the Web, call Jim and get the measurable results you've been missing. Ask him for a free 4-page marketing analysis — with no obligation on your part whatsoever.

And learn how he's helped companies like yours generate a remarkable return on investment ... or ROI.

*\*As a sideline, Jim also writes "Exploring the City" for the Society Hill Reporter*

**YOURS FREE:** Reply today and get a FREE copy of the "Biggest Marketing Blunders Most Companies Make"! Are you guilty of these?

Phone: **267.773.8088**  
Email: [Jim@remarkableroi.com](mailto:Jim@remarkableroi.com)



## EXPLORING THE CITY

BY JIM MURPHY

## The Fairmount Water Works

If you haven't yet been to the Fairmount Water Works Interpretive Center, it's worth a trip.

You'll get a fascinating look at a Water Works that:

- Set the pace for more than 30 U.S. cities.
- Got rave reviews from writers like Charles Dickens and Mark Twain.
- Was the second-most popular tourist destination in the country in the mid-19th century.

Philadelphia's search for clean water was spurred by a deadly yellow fever epidemic in 1793 that killed over 4,000 residents.

The city responded with a bold, state-of-the-art solution — though one somewhat off the mark. (It took scientists until about 1900 to learn that mosquitoes spread the disease, not dirty water.)

**Today, almost 200 years later**, the Fairmount Water Works offers visitors breathtaking views, innovative architecture and a unique look at municipal problem-solving.

Before Fairmount, Philadelphia's Watering Committee opened the city's first Water Works in 1801 at Centre Square, where City Hall is now located. Because of maintenance problems, unresolved technical problems and the need for a more reliable water supply, that site was abandoned in 1815.

But Centre Square was important for two reasons: its distribution system through pipes laid out in alignment with the street grid and Benjamin Latrobe's beautiful neoclassical building.

At Fairmount, Frederick Graff, a Latrobe disciple and newly named superintendent, continued the tradition of designing elegant classical revival buildings that disguised industrial machinery inside.

The result: Fairmount was renowned for its marvelous architecture, stunning gardens and promenades and wonderful water wheels.

**Like fictional fighter Rocky Balboa** in the "Rocky" movies, the Fairmount Water Works had its ups and downs. At first, it was a national pace setter and technological marvel.

In 1822, after Superintendent Frederick Graff replaced two steam engines with large water wheels, people flocked to Fairmount to see them in action. Later, even more efficient turbines replaced the water wheels.

Unfortunately, during the industrial revolution, companies north of Philadelphia relentlessly dumped pollution and waste into the Schuylkill River. By 1883, the water was so bad that a physician offered \$50 to anyone who could drink a quart of it ten nights in a row without vomiting or dying.

**To combat the pollution**, the city added new pumping and filtration stations near the Schuylkill and Delaware Rivers. Then in 1909, after 94 years in operation, the Water Works was closed.

Today, the Philadelphia Museum of Art — Rocky statue and all — sits atop what was once the 3,264,126-gallon Water Works' reservoir.

Inside the old facilities is the Fairmount Water Works Interpretive Center. Opened in 2003, it now educates residents about water in our world.

**The staff is warm, welcoming and helpful. Admission is free.** A 20-minute movie, interesting exhibits and interactive displays make it a fun learning experience for young and old alike.

**Interesting oddities:**

- While the Fairmount Water Works became the nation's "most depicted piece of architecture" in the 19th century, says Arthur S. Marks, professor emeritus, Department of Art, University of North Carolina, Frederick Graff, the superintendent and chief engineer at Fairmount, was unappreciated for his architectural skills. He was not even listed in a biographical dictionary of Philadelphia architects of the period. Yet, Marks says, the Water Works "was wholly the product of Frederick Graff." Graff designed the buildings, most of the machinery, the distribution system and the gardens.
- To prevent nearby industries from locating too close to the water supply, Philadelphia purchased the Lemon Hill property of Robert Morris in 1844. That strategy — "to protect and improve the purity of the Schuylkill water supply" — eventually resulted in the creation of Fairmount Park.
- The Water Works is a National Historic Civil Engineering Landmark, a National Historic Landmark and National Historic Mechanical Engineering Landmark.



**A walk to the Water Works from the Art Museum bus stop offers you sensational views of the old buildings, the dam and the river.**

*In the mid-19th century, foreign and U.S. tourists made the Fairmount Water Works America's second-most visited destination. Niagara Falls was first.*

**FAST FACTS**

**Place:**  
Fairmount Water Works Interpretive Center

**Address:**  
640 Waterworks Drive  
Philadelphia, PA 19130

**Admission:** Free

**Hours:**  
Sundays, 1-5 p.m.  
Tues-Sat, 10 a.m.-5 p.m.  
Closed Mondays and City Holidays

**Phone:**  
215-685-0723

**Web:**  
fairmountwaterworks.com

## OUT AND ABOUT

## House Tour...

Despite a drizzly start, the 35th Annual Society Hill Open House & Garden Tour was a big success, attracting an enthusiastic group of tourgoers. Pre-sale ticket purchases broke previous records. People came from far and wide, including Philadelphia, Philadelphia suburbs, South Jersey, Delaware and New York City.

SHCA extends our sincerest thanks to all of the home and garden owners who so generously allowed us to showcase their exceptional homes and gardens for the tour. It is only through their participation that we may have such an event each year.

Thanks also to our 100 plus volunteers who made it possible for the tour to run smoothly and safely — we couldn't have done this without them. Lastly, we thank our dedicated tour coordinators, Linda Skale and Martha Levine, who worked diligently over many months to create and produce this much-loved annual event and have done so for the past 13 years.

Thank you to all who attended and supported the tour — 100 percent of the proceeds go towards neighborhood improvement projects that benefit us all in Society Hill. The event grossed \$16,500 and is the only annual fundraiser that raises money exclusively for SHCA.

Photos by Bonnie Halda



Mimo and Keith Betten



Steve and Ruth Greenberg, Rosanne Loesch and Yves Quintin



Louise Tritton and Katherine Robinson



Andy and Erica Poletto with baby Anna



Homeowner Ruth Valentine and pooch



OUT AND ABOUT

...and Garden Tour



**The Sims family, William, Julianna, Melissa, Vicki, Steve and Harold**



**Jacqueline and Michael Tolcott**



**Stephanie Smith, Garret Desjardin, Judy and Garrett Smith**



**Melanie Sheer, Toba Kerson and Jennie Pritzer**



**Dan Van Kuren, Cinnamon Christian, Mary Beth Christian and Rodrigo Pichardo**



**Albert Walker and Clare Talley**



NEWS YOU CAN USE

# Operation ID

Operation ID is a burglary-deterrent program for Philadelphia residents and business owners. It involves labeling property with an identifying number to discourage burglary and theft.



In communities where it has been properly implemented, Operation ID has shown dramatic results. This is because labeled property is difficult for thieves to dispose of or resell. It can be traced to the rightful owner with relative ease. Also, if the burglar is caught with labeled property, it is solid evidence of possession of stolen goods.

To participate in Operation ID, citizens should contact the Philadelphia Police Department online at [blog.phillypolice.com/tag/operation-id/](http://blog.phillypolice.com/tag/operation-id/) or visit their local police station. You will be provided, free of charge, with a registration form, window stickers and item stickers imprinted with a unique identifier, such as your social security or cell phone number.

Place item labels on a visible area near existing serial numbers on your property. After labeling

your property, make a list of the items and keep that list in a safe place, such as a safety deposit box. This will be of great help to the police in their attempts to recover stolen property. Would-be thieves will now be warned that your property can be identified by the police.

Once your property has been labeled and a list has been compiled, display the Operation ID window sticker prominently on windows and doors.

### Things to Label

Anything can be labeled, but these are the items most commonly stolen from homes, vehicles and businesses:

- TVs
- Electronic components
- Tools (hand and power)
- Kitchen appliances
- Gaming systems
- Computers
- DVD players
- Cell phones
- GPS devices
- Guns
- Cameras
- Bicycles
- Tire rims

**QUEEN VILLAGE  
FAMILY DENTISTRY**

**JEFF CABOT, DMD**

[WWW.QUEENVILLAGEFAMILYDENTISTRY.COM](http://WWW.QUEENVILLAGEFAMILYDENTISTRY.COM)

**215-925-7330**

*Creating harmony in body and mind*

*Judy Moon  
and Associates*

**CONVENIENT, RELAXING MASSAGE THERAPY**

Washington Square South  
in the Hopkinson House

ABMP Certified    267.671.0861    [www.judymoon.com](http://www.judymoon.com)

SINCE 1985

**NATIONAL WATCH & DIAMOND**

Visit our website at [NationalWatch.com](http://NationalWatch.com)

**PRE-OWNED  
ROLEX,  
CARTIER,  
BREITLING  
& MORE!**

**OVER 400 ROLEX IN STOCK**  
ROLEX REPAIR & REFINISHING - ONE YEAR WARRANTY  
WE BUY GOLD, SILVER & DIAMONDS

**(215)627-WATCH** 8th & Chestnut Streets  
Philadelphia, PA 19106

N.W.E. IS NOT AN OFFICIAL ROLEX JEWELER



**S A F E A N D S O U N D I N S O C I E T Y H I L L**

BY MARILYN APPEL

**Security cameras:** As we've mentioned in the past, SHCA is spearheading a pilot project known as "Street Smart." Block coordinator Laura Temple has been working with the Philadelphia Police Department to have video security cameras installed in a limited area to record criminal activity and act as a deterrent to any incidents. The project is underway; however, it is going to take some more time to implement.

For those of you who are impatient, there are a couple of things you can do. If you already have a security system, your company can install the outdoor camera(s) for you, and it will cost you a little extra money. Or you can purchase any number of cameras at BJ's, Sam's or Costco, to name a few places. If you buy wireless, you can install them yourself with very little effort. Just make sure the cameras can "see" in the dark and have a long range (halfway down the street). Stationary rather than mobile appears to be preferable, as there are fewer parts to break.

Register your cameras with the police online at [safecam.phillypolice.com/registration](http://safecam.phillypolice.com/registration). If anything happens close to your house (hopefully it won't), the police will call and ask to see what you have recorded. You can have a digital system if you wish. I received this information from Captain Brian Korn, who has a security system with cameras installed at his own home.

**Reminders:** It's *al fresco* dining time again, and no matter how convenient it feels for you ladies to hang your purses on the back of your chair, don't do it. It's much too easy for a professional pickpocket to literally lift one credit card from your purse. You probably won't find out until much later. Men who keep their wallets in their back pockets are just as vulnerable; the breast pocket is more secure.

**PERSONAL SAFETY BEST PRACTICES**

**Walking or Jogging**

- Walk alertly and assertively.
- Stay in the middle of the sidewalk rather than against doorways or along curbs.
- Stay alert — iPods and cell phones will distract you.
- Keep your purse hugged close to your body and wallet in front pants pocket or jacket pocket.
- Walk or jog with a companion.
- Use familiar areas.
- Do not walk or jog alone after dark or in secluded areas.
- Be sure to face traffic.
- Wear brightly colored or reflective clothing to improve visibility.

- Carry a whistle or shrill alarm.
- Vary your route and pattern.
- Be aware of your surroundings.
- Walk or jog away from bushes where someone can hide.

**Automated Teller Machines (ATMs)**

- Try to avoid using ATMs when alone or after dark.
- When possible, use ATM inside a bank or store, and be alert before using it.
- Have all necessary cards and documents ready.
- Protect your personal identification number (PIN)
- When your transaction is complete, leave immediately.

**The Brass Bandit is here again:**

Four door knockers were stolen in one week. Be alert for noises that might be the Brass Bandit stealing your brass.

**Now the most important thing:**

Philadelphia police say that cell phone theft is the number one personal item stolen — above handbags and wallets. Please, please, please keep your cell phones hidden. If you walk down the street, even in our "comparatively safe" neighborhood, day or night, you are a target. If you are accosted, give it up! If you are held up, give up your money! Throw your money in the opposite direction of which you will run. Thieves will go after the money rather than you. Stay Safe!


**Shopping for your Apple products just got a lot more convenient.**




Springboard Media's third location is now open in Midtown Village!  
 116 S. 13th Street (between Walnut and Sansom)  
 215-599-9000 • [springboardmedia.com](http://springboardmedia.com)  
 Sales • Service • Trade-Ins • Accessories



www.PlumerRE.com




Gail Finnegan & Francisco Carreno

**Plumer**   
 & Associates, Inc.  
 Realtors  
 226 South St.  
 Philadelphia, PA 19147  
 215-922-3600 x 310

FC@CarrenoRE.com  
 (215) 917-2718

## Hi Tech. Hi Touch.


A Winning Combination –  
 in Person and on the Web!



**Buying? Selling?**  
 Please call or email  
 Rosemary Fluehr.

**Know someone who's  
 Buying or Selling?**  
 Let me know. Referrals are  
 the strength of my business.

**Rosemary Fluehr**  
 Associate Broker, GRI



**Prudential**

215-440-8195 – Direct  
 215-627-6005 – Office  
 215-514-9884 – Cell  
 rosemary.fluehr@prufoxroach.com  
 www.rosemaryfluehr.com

**Fox & Roach,  
 REALTORS®**  
 530 Walnut Street, Suite 260


## Jan Stephano ABR, CSR

*Lives, Knows,  
 Sells Center City!*

**43 years your neighbor  
 26 years your realtor**


**Buyer  
 and Seller  
 representation.**

*Call me for a  
 no obligation  
 evaluation of  
 your home.*



janstephano@plumerre.com  
 www.janstephano.com

**Jan Stephano**  
 215.922.3600 x219



**Plumer**  
 & Associates, Inc.  
 Realtors



## THE DAMON MICHELS TEAM


*Specializing in  
 The Main Line  
 and Center City*

**DAMON MICHELS**  
 ABR, ASP, ASR, ALHS, Green, Realtor  
 cell: 215.840.0437  
 office: 610.688.4310  
 Damon@DamonMichels.com  
 www.DamonMichels.com

**IF YOU ARE LOOKING  
 TO BUY OR SELL  
 CALL DAMON MICHELS  
 AT 215.840.0437**

**OVER \$55 MILLION  
 IN 2012 SALES!**

**Prudential Fox & Roach, REALTORS®**  
 An Independently Owned and Operated Member of The Prudential Real Estate Affiliates, Inc. 



**'FIX THE BRICK'**

BY MARTHA LEVINE

# Our Sidewalks, Our Responsibility



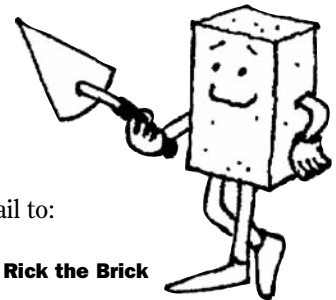
**Before**



**After**

Bricks settle into the soil and are damaged by tree roots, vehicles, wear and tear, etc. Homeowners are responsible to set them straight. SHCA wants to help by offering a reimbursement of 40 percent, up to \$300, to owners who level their front sidewalks. It's an easy four-step program.

- 1** For information, or to get a list of masons/arborists, contact Martha Levine at [marthalev@msn.com](mailto:marthalev@msn.com), 215-629-0727, or Frank Signorello at [fsignorello@gexchange.com](mailto:fsignorello@gexchange.com). Let us know you are interested in having work done.
- 2** Get a few estimates and select a contractor who meets your budget and needs.
- 3** After the work is completed, submit your invoice by mail to: SHCA, P.O. Box 63503, Philadelphia, PA 19147
- 4** Receive a reimbursement check from SHCA.





**SMART  
RESPONSIVE  
EXPERIENCED**

B a r i S h o r


## "Real Estate MatchMaker"

Whether you're selling or buying a home in amazing Center City, Bari Shor cares and *delivers* for you.

I am your neighbor,  
let me be your Realtor,<sup>®</sup> too!


**Contact me:  
Bari Shor 215-790-5678  
Barishor@aol.com  
Prudential Fox & Roach Realtors  
215-546-0550 x 5678**

## In Center City Real Estate



*One name. One call.*

## Izzy Sigman



*Named Philadelphia Magazine  
2012 Five Star Professional  
Real Estate Agent*

Outstanding *service* and *results*.  
Every time.

**If you're in the market for a new home,  
I can help you find the perfect property...  
and help you sell yours**

**Call Izzy Sigman  
Plumer  
& Associates, Inc.  
Realtors  
226 South Street  
215-922-3600 x 228 Office  
215-806-6958 Mobile**

# Mike McCann

"THE REAL ESTATE MAN"  
And His Five Star Team

Direct: 215.440.8345 | Office: 215.627.6005  
Or find us online at [www.mccannteam.com](http://www.mccannteam.com)

## THE MARKET'S HOTTER THAN EVER!

It's never been a better time to buy or sell your home!

### CHECK OUT THESE STUNNING HOMES!

**609 Lombard \$369,900**  
Gorgeous 1BD/1BA trinity home featuring tremendous fenced off red brick courtyard, charming granite and tile kitchen with hardwood floors, and an immaculate master bedroom suite!

**211-25 S. 4th Street 104 \$805,000**  
Exquisite 2BD/2.5BA condo unit in The Willings with high ceilings, hardwood floors, and quadruple insulated walls for privacy, featuring the finest amenities, including 24 hour concierge and doorman.

**108 Lombard Street \$825,000**  
Absolutely stunning 3BD/2.5BA home with garage, cozy den, new rooftop deck, Juliet balcony, also designed with fireplace, 2-story dining area, and custom granite and stainless kitchen!

**333 Lawrence Street \$925,000**  
Highly coveted 3BD/2.5BA home featuring 3 historic trinities, 1 year pre-paid parking, 7 working fireplaces, and 2 finished basements, all with gorgeous original hardwood floors, custom floors, and an award winning private garden.

**838-40 Lombard Street \$1,595,000**  
Heavenly 5BD/4.5BA home with rooftop terrace, elevator, and garage, complete with granite and stainless kitchen, cozy den, 4 piece marble tile bath, and private yard with patio and gardening area!

**415 Pine Street \$1,850,000**  
Federal style historic 1790's townhome lovingly restored! This unique and spacious 5BD/3.2 BA home features original pine floors, six fireplaces, crown moldings, period hardware, skylights, and stone flooring.



**STOP SEARCHING.  
START FINDING.**

**CALL THE MCCANN TEAM TODAY!**  
Office: 215.627.6005 Direct: 215.440.8345



# Prudential

**Fox & Roach,  
REALTORS®**

90% of our business comes from friends telling friends!



## Kathy, Patrick and the Conway Team

Recipients of the most prestigious award attainable "The Pinnacle Award." This award is reserved for the Top Ten Prudential agents nationwide out of 68,000 agents in the entire U.S.A.

Prudential  
Society Hill  
215.627.6005  
[www.conwayteam.com](http://www.conwayteam.com)

KATHY 215.440.8190  
[kathy@conwayteam.com](mailto:kathy@conwayteam.com)  
PATRICK 215.440.8172  
[patrick@conwayteam.com](mailto:patrick@conwayteam.com)

Independently owned and operated member of the Prudential Real Estate Affiliates, Inc.

Top 6% of all Realtors in Prudential Network Nationwide  
Accredited Luxury Home Specialist  
Diamond Award

I am a professional,  
full-time real estate agent  
as well as your neighbor.

### ■ PAMELA D. LAWS

ABR, ALHS, SRES, ASP



Like many of my clients,  
Society Hill is my home.  
I specialize in Center City  
because I love Philadelphia.  
Let me find the perfect  
townhome or condo for you!



**Prudential**  
Fox & Roach,  
REALTORS®

215.790.5688 [pam.laws@prufoxroach.com](mailto:pam.laws@prufoxroach.com)  
[WWW.PHILADELPHIAPROPERTIES.NET](http://WWW.PHILADELPHIAPROPERTIES.NET)

An independently owned and operated member of the Prudential Real Estate Affiliates, Inc.





## SUMMER CALENDAR

## Have a Festive Summer!

All summer long, outdoor festivals abound in Philadelphia. Whether you're looking to groove to the beat of some of the finest musicians at the Made in America Festival (hello, Beyonce!), explore the great food trucks

of Philadelphia at an upcoming Night Markets, or celebrate one of Philadelphia's unique enclaves at smaller neighborhood festivals, this list is for you. Fill up your summer calendar with happenings right here in the City of Brotherly Love.

## July

July 13

**Bastille Day at Eastern State Penitentiary**

The 19th annual Bastille Day Festival takes over Eastern State Penitentiary. Following the free performance of the storming of the Bastille by experimental cabaret troupe The Bearded Ladies on Fairmount Avenue, Fairmount's businesses and restaurants open their doors for a public celebration.

From July 11 through 22

**QFest**

Gay and lesbian films come to the forefront at QFest, where more than 150 films will be screened along with exclusive parties, panel discussions and more. Screenings will be held at the Ritz East, the Prince Music Theatre and other venues around the city. The screenings are presented by the Philadelphia Cinema Alliance.

July 13 and 14

**Hispanic Fiesta at Penn's Landing**

The Council of Spanish-Speaking Organizations, Inc. hosts its annual Hispanic Fiesta, a weekend-long celebration filled with music and dancing at the Great Plaza at Penn's Landing.

All day on Saturday, July 20

**Lancaster Avenue Jazz and Arts Festival**

Powelton Village welcomes acclaimed jazz artists for the annual Lancaster Avenue Jazz and Arts Festival at Saunders Park. From 1 to 6 p.m. enjoy jazz, art and other festivities.

July 20

**Philadelphia Zoo's Summer Ale Festival**

Enjoy more than 30 types of beer and tasty food samplings from local eateries at the Philadelphia Zoo's Summer Ale Festival. In addition to food and drinks, visit the many zoo animals at the annual event.

July 27

**Mad Decent Block Party**

One of the summer's biggest block parties returns to Philadelphia. The Mad Decent Block Party takes over the Great Plaza at Penn's Landing and features hit-makers like Major Lazer, Dillon Francis, Riff Raff and more.

Sunday, July 28

**East Passyunk Ave. 8th Annual Car Show & Street Festival**

More than 130 cars of all types take over East Passyunk Avenue. Food, vendors, live music and more fill five of East Passyunk Avenue's bustling blocks.

## August

August 3

**African Festival**

The 6th annual African Festival visits Penn's Landing and brings with it an outdoor concert featuring a variety of African music, African food vendors, arts and crafts vendors and more.

Sunday, August 4, noon - 10 p.m.

**2nd Street Festival**

Definitely mark your calendar for this one. The blockbuster 2nd Street Festival makes its way to Northern Liberties for another sure-to-be hugely popular event. Food, beer gardens (yes, plural!), local art, jewelry, workshops and other vendors line 2nd Street from Germantown Avenue to Green Street. Enjoy live music at numerous stages throughout the festival.

August 8 to 10

**Pennsylvania Dutch Festival at Reading Terminal Market**

Transport to Amish country at the annual Pennsylvania Dutch Festival at Reading Terminal Market. Indulge in traditional food and browse handmade crafts at the festival. On Saturday, August 10, head outside to Arch Street for Amish buggy rides, horse-drawn carriage rides, a petting zoo and live music.

August 10

**Southeast Asian Dragon Boat Festival**

In association with the PECO Multicultural Series, the Southeast Asian Dragon Boat Festival teaches and entertains guests at Penn's Landing. Check out dragon boat racing down the Delaware River. For live entertainment, visit the River Stage, which will turn into a mecca for Southeast Asian culture.



August 10 and 11

**Bug Fest**

Creepy crawlers of all shapes, sizes, colors and attitudes invade The Academy of Natural Sciences of Drexel University. Insect lovers can touch a furry tarantula or cheer for their favorite cockroaches during the roach race. Scientists are on hand to convince even the most disbelieving visitor that insects are important creatures, too.



August 15

**Night Market South Street**

The hugely popular Night Market returns to the ever-bustling South Street. Enjoy a variety of food truck fare, local beer and live entertainment at this awesome event.

August 18

**Philadelphia Caribbean Festival**

Celebrate 14 Caribbean Islands at the Philadelphia Caribbean Festival at Penn's Landing. Music will be presented for your listening pleasure and eats from each country will abound as well.

August 31 and September 1

**Made in America**

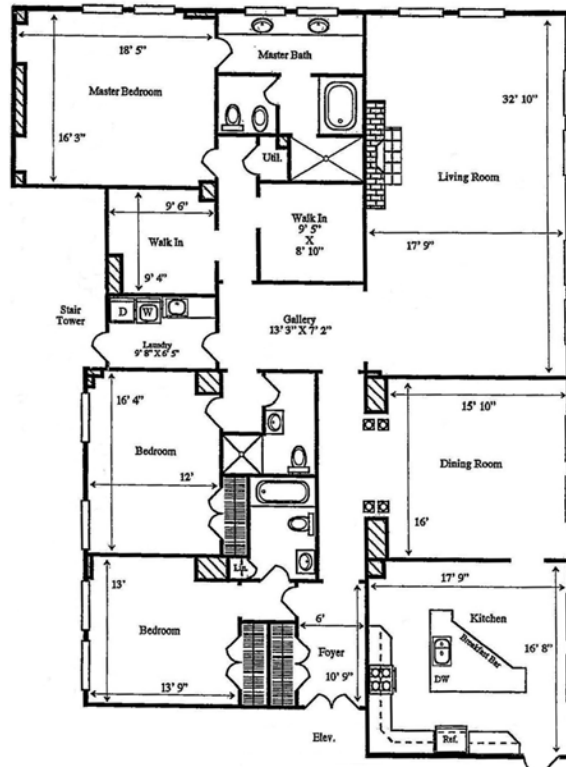
The epic Made in America music festival returns to the Benjamin Franklin Parkway. Acts include Beyonce, Nine Inch Nails, Public Enemy, Emilee Sande, Solange and more.

**AD Allan Domb**  
Philadelphia's Largest Luxury Condominium REALTOR®

1845 Walnut Street, Suite 2200  
Philadelphia, PA 19103  
215-545-1500  
www.allandomb.com

## Allan Domb Real Estate Presents

### 220 West Washington Square 3720 SF THREE BEDROOM



### Custom entire floor home with 360 degree city views including dramatic Washington Square vistas.

Enter the residence through a secure elevator that opens directly into a foyer appointed in marble. A grand gallery runs the length of the home. Perfect for entertaining, the large sun-soaked living room offers west and south facing windows, coffered ceilings, a gas burning fireplace and large mahogany wet bar. The arched entry to the formal dining room has beautiful faux-painted columns. The chef's kitchen features cherry cabinetry; granite countertops; under-counter and recessed lighting; center island with breakfast bar; and stainless steel GE Monogram gas range with electric oven and hood, Bosch dishwasher and Sub-Zero refrigerator with freezer drawer.

The lavish master suite has his and hers walk-in California Closets and an ensuite bathroom appointed in marble with a Jacuzzi tub, oversized seamless glass enclosed stall shower, private commode and bidet and double vanity with windows overlooking Washington Square. Two additional bedrooms each have their own full baths, one ensuite and the other adjacent. Additional home features include oak floors in the living areas and carpet in the bedrooms, twelve foot ceilings and eight foot windows throughout, two Bose sound systems and a spacious laundry room.

The condominium comes with one parking space in a secure lot adjacent to the building and two storage spaces.

**\$1,995,000**



SUMMER CALENDAR

# Some Unusual Places to Check Out

## Pop Up Garden

The Pennsylvania Horticultural Society's (PHS) annual Pop Up Garden returns for its third year, transforming a forgotten outdoor area into a gorgeous, landscaped community space. This year a literal beer garden was created on South Broad Street, on the campus of the University of the Arts.

The space, located across the street from the Kimmel Center for the Performing Arts, is a refreshing escape with lush landscaping and an on-site beer garden and restaurant.

In addition to the serene surroundings and satisfying menu, visitors can expect occasional impromptu performances and exhibitions of music, dance, theater, sculpture, photography and other visual arts by both undergrad and graduate University of the Arts students.

But, just like the leaves on the vibrant trees, the PHS Pop Up Garden will disappear in the fall.

## Washington Avenue Green

Formerly known as Pier 53, Washington Avenue Green is located at Washington Avenue, just south of the Coast Guard station and behind the Sheet Metal Workers' Union Hall, 1301 South Columbus Boulevard. The one-acre site on the long-abandoned pier is one of the few tracts along the Delaware riverfront that is owned by the City of Philadelphia. It is the first of the public parks to be created by the Action Plan for the Central Delaware.

Because there has been no commercial activity at that location for decades, the pier that originally welcomed ships and freight carriers deteriorated, and both native and non-native trees and plants took hold and flourished.

## A Brooklyn Flea Market Hops To Philadelphia

Co-founders Eric Demby and Jonathan Butler are setting up a weekly flea market, "Brooklyn Flea Philly," beginning June 2 and continuing every Sunday at the Piazza at Schmidt's, 1050 N. Hancock Street, in Northern Liberties.

The market features top vendors of antiques and collectibles, as well as jewelry, art and crafts from local artists whom Demby and Butler say are top-notch.

The food at the Brooklyn flea markets has become such a big thing that there are now two flea markets that do just food. Vendors from New York will join local vendors here.



## WEEKLY SUMMER HAPPENINGS

### Wednesday Night Family Programs at the Free Library

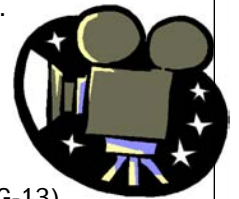
Free programs at the Independence Branch, 18 South 7th Street.

- June 19 Mlanjeni's Magical Theater
- June 26 Mutya: Filipino-American Dance Group
- July 3 Magic by Poly
- July 10 Ronald McDonald Show
- July 17 Klezmer, Yiddish, Eastern European, Brazilian music
- July 31 Folk music with John Krumm and Bill Dooley
- Aug 7 Randel McGee and "Groark" – puppet/ventriloquist act

### Summer Movie Screenings Under the Stars

A free movie series at Penn's Landing in July and August.

- July 11 *The Dark Night Rises* (PG-13)
- July 18 *Silver Linings Playbook*
- July 25 *Wreck-It Ralph* (PG)
- August 1 *Avengers* (PG-13)
- August 8 *The Hunger Games* (PG-13)
- August 15 *The Hobbit: An Unexpected Journey* (PG-13)
- August 22 *Pitch Perfect* (PG-13)
- August 29 *Dr. Seuss' The Lorax* (PG)



**Lioness Antiques Jewelry**  
 520-A south 2nd street, Phila.  
 Abbots Square Building  
 215-592-4099

Store Hours:  
 Tues-Sat, 11am - 7pm  
 Sun, 11 - 5

**COSMOS**  
 FINE NAIL SALON  
 PHILADELPHIA'S SALON FOR MEN & WOMEN  
 [NAILS ~ WAXING ~ MASSAGE]

<b>1204 walnut street</b> (215) 627 - 1020 mon-wed: 930a - 700p thurs-fri: 930a - 800p sat: 930a - 600p sun: 930a - 600p	<b>1308 sansom street</b> (215) 545 - 5456 mon-wed: 930a - 700p thurs-fri: 930a - 700p sat: 930a - 600p sun: closed
---	--

RESERVATIONS RECOMMENDED

**AD Allan Domb**  
Philadelphia's Largest Luxury Condominium REALTOR®

1845 Walnut Street, Suite 2200  
Philadelphia, PA 19103  
215-545-1500  
www.allandomb.com

## Allan Domb Real Estate Presents The Lippincott

227 S. 6TH STREET



### Two Bedroom Plus Den Showplace

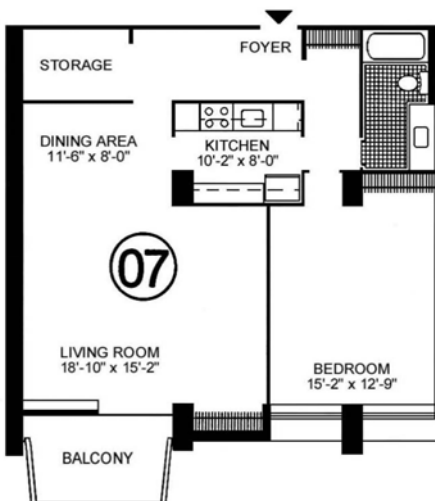
Two bedroom plus den, three and a half bathroom showplace overlooking Washington Square and offering southern exposure. The condominium has a Joanne Hudson kitchen, designer bathrooms, lavish master suite and wonderful entertaining and living space. 3510 sf  
**\$3,500,000**

### Sun-soaked Three Bedroom Plus Study/Library

Sun-soaked three bedroom plus study/library, two and a half bathroom residence overlooking Washington Square with open floor plan, chef's kitchen, grand master suite and restored original building details throughout. 2716 sf  
**\$1,695,000**

## Allan Domb Real Estate Presents Hopkinson House

604 S. WASHINGTON SQUARE



### Beautifully Customized Deluxe One Bedroom

Light-filled one bedroom on a high floor with southern views, new hardwood floors, a totally updated kitchen with high end finishes and fixtures and a designer bathroom. 1003 sf  
**\$359,900**





**SUMMER WALKS**

Summer is the best time of the year to take a walk in Society Hill. The window boxes are overflowing with color and texture, and the greenways are lush and verdant. Washington Square is a beautiful, shady oasis. Consider joining one (or both) of our organized walking groups that meet in the cool of the morning.

**“Philly Is Walking In the Park!”** meets at the fountain in the center of Washington Square (6th and Locust) at 8 a.m. on Mondays, Wednesdays and Fridays for a half-hour, self-paced walk through our historic beautiful park, led by neighbor Dr. Lisa Unger. All are invited to join us!



**“Philly Is Walking In The Park!”** was recently joined by Law Enforcement Park Ranger Ryan McLeod, who gave a wonderful presentation on the fitness requirements of his position with the National Park Service. Events like these provide good information and help participants become an even healthier, more connected community.

The **Walkie/Talkies** meet at Three Bears Park (Delancey Street between 2nd and 3rd Streets) on Tuesday and Thursday mornings at 8:15 a.m. for a one-hour stroll throughout our historic community. Anyone is most welcome to participate in this non-stressful, one-hour exercise and socialize program.



CLAUDIA MCGILL 215.893.9920 claudia@elfantwissahickon.com

**SUMMER DAY CAMP**

Whoops! Have you just remembered that by August your kids will be complaining, “I’m bored, there’s nothing to do?” Young Art Sleuths summer day camp is the perfect solution for children ages 6 to 14. Campers have fun while learning about their neighborhood and American history. Best of all, drop-off and pickup is right down the street!

Activities include theater, dance and colonial crafts, as well as cooking at Landmark’s Physick and Powel Museum Houses. In addition, there are three “Hikes into History” and field trips to local museums, plus much, much more.

The first session is August 5 thru 9; the second session runs from August 12 to 16. Each week costs \$175. For more information, visit [www.philalandmarks.org](http://www.philalandmarks.org) or call 215-925-2251, ex.5.

**Landmarks Education Wish List**

Help support the Powel and Physick Houses educational programs with these donations: microwave, food grinder, pencils, markers, cups, wet wipes, paper towels, healthy snacks, vinegar, baking soda, florists clay, pipe cleaners, yarn (balance of used rolls is fine), scotch tape, masking tape, sugar, cinnamon, cake mix and Bisquick.

**August 5-9  
August 12-16**

**Landmarks  
Young Art  
Sleuths**



**Plumer & Associates, Inc.  
Realtors**

**Plumer**

Center City’s largest independent Realtor.  
Serving Philadelphia since 1923.

**Residential,  
Commercial,  
and Investment  
Real Estate**

For a complete listing of Center City properties visit our website:  
[www.plumerre.com](http://www.plumerre.com)



226 South Street, Philadelphia  
[info@plumerre.com](mailto:info@plumerre.com)  
**215 922 4200**

**AD Allan Domb**  
Philadelphia's Largest Luxury Condominium REALTOR®

1845 Walnut Street, Suite 2200  
Philadelphia, PA 19103  
215-545-1500  
www.allandomb.com

## Allan Domb Real Estate Presents The Bank Building

421 CHESTNUT STREET

### Brand New Custom Home Overlooking Independence Hall

Beautifully appointed two bedroom plus den, two and a half bathroom condominium with exposed brick barrel ceilings and walls, chef's kitchen and amazing bathrooms.  
2,025 sf  
**\$1,100,000**



### Brand New Furnished Designer Residence

Magnificent two bedroom, two bathroom home that is available furnished, with high end finishes and features, as well as original building details such as exposed brick walls and arched doorways. 2,101 sf  
**\$895,000**

### Unique Opportunity to Create a Custom Home

Raw space that provides an opportunity to create a custom home overlooking Independence Hall—customize your own floor plan and finishes! 3,068 sf  
**\$1,150,000**



4A ↘



**CLIP AND SAVE CONTACT INFORMATION**

**Local Politicians**

Councilman Mark Squilla, 1st District  
215-686-3458, 215-686-3459  
mark.squilla@phila.gov

Legislative Aide: Sean McMonagle  
Sean.mcmonagle@phila.gov

**State Politicians**

State Rep. Michael H. O'Brien, 175th District  
215-503-3245  
mobrien@pahouse.net

State Senator Larry Farnese, 1st District  
215-952-3121  
senatorfarnese.com

**Federal Politicians**

Congressman Robert A. Brady, 1st District  
215-389-4627  
Robert.a.brady@mail.house.gov

Senator Patrick Toomey  
215-241-1090  
www.toomey.senate.gov

Senator Bob Casey  
215-405-9660  
www.casey.senate.gov

**Society Hill Action Contacts**

Society Hill Civic Association  
Matt DeJulio, Administrator  
215-629-1288  
mattdejulio@aol.com

Society Hill Reporter  
Sandra Rothman, Managing Editor  
717-715-5791

**Key Contacts**

Center City District  
Paul Levy, Exec. Director  
info@centercityphila.org 215-440-5500

Washington Square West Civic Association  
Dr. Clay Scherer, President  
info@washwestcivic.org 215-346-6411

South Street Head House District  
Mike Harris, Exec. Director  
sshhd@aol.com 215-413-3713

Queen Village Neighborhood Association  
Jeff Hornstein, President  
info@QVNA.org 215-339-0975

Center City Residents Association  
centercity@centercityresidents.org 215-546-6719

**Useful Numbers**

Fire, Emergency and Police 911

Sixth District Police Station  
(general information) 215-686-3060

South Street Police Mini-Station  
(quality of life issues) 215-922-6706

Sixth District Bike Patrol 215-787-7864

Police Information Center 215-386-2100

City of Philadelphia  
Mayor's Action Center  
(Information and Complaints) 215-686-3000

City Hall 215-685-1776

Child Abuse Hotline 215-683-6100

Historical Commission 215-686-7660

Homeless Intervention, Proj. Home 215-686-3095

Independence Branch Library 215-597-8974

**Useful Links**

**Neighborhoodbase**

cml.upenn.edu/nbase  
NeighborhoodBase is a publicly accessible, web-based, geographic data application developed by the University of Pennsylvania's Cartographic Modeling Lab. Its powerful features allow you to search over 200 different data elements of the city's neighborhoods, all the way down to the block level. Search through census, housing and demographic data, and create maps and charts all online.

**Philadelphia City Planning Commission**

www.phila.gov/cityplanning  
The City Planning Commission is responsible for guiding the orderly growth and development of the City of Philadelphia. Its site contains development reports, city statistics, maps and other publications.

**Philadelphia Architects and Buildings**

www.philadelphiabuildings.org  
This site serves as a source to determine if your home is on the Philadelphia Register of Historic Places. The Philadelphia Architects and Buildings database provides authoritative information on three centuries of Philadelphia buildings and designers.

**Center City Schools**

www.centercityschools.com  
A new initiative to provide parents of school-age children with information about school options within the city.

**City Services**

Most City of Philadelphia issues are now being handled by the City's 311 system. In an emergency, where immediate police response is required, call 911 directly.

Issue	Agency	Phone	Issue	Agency	Phone
Abandoned Property	Police Dept.	311	Mailboxes	US Postal Maintenance	215-895-9113
Abandoned Vehicles	Police Dept.	311	Mosquito Complaints	Police Dept.	311
Air Quality	Health Dept.	311	Noise Complaints, Air Mgmt.	Health Dept.	311
Animal Management	Health Dept.	311	Parking Meters	Parking Authority	215-683-9600
Complaints			Parking Problems	Parking Authority	215-561-3636
Building Permits	Streets Dept.	311	Potholes/Sidewalks	Streets Dept.	311
Building Violations	L&I	311	Power Outage/Downed Lines	PECO Energy	800.494.4000
Business Questions	Commerce Dept.	215-683-2100	Recycling Questions	Streets Dept.	311
Confidential Narcotics Reports	Narc. Intelligence Squad	215-685-1137	Rodents in Residence	Health Dept.	311
Curb Deterioration	Streets Dept.	311	and Outdoors		
Dead Pet in Home	PSPCA	215-426-6300	Rat Complaints	Police Department	311
Dead Animal in Street	Streets Dept.	311	Septa Customer Service	SEPTA	215-580-7852
Dumpsters	SWEEP Unit	311	Sidewalk Deterioration	Streets Dept.	311
Food Store/Restaurant	Health Dept.	311	Signs	Center City District	215-440-5500
Problems			Street Lights	Streets Dept.	311
Gas Leaks	Philadelphia Gas Works	215-235-1212	Street Signs	Streets Dept.	311
Graffiti, 1st Floor	Center City District	215-440-5500	Traffic Signals and Signs	Streets Dept.	311
Graffiti, Upper Floors	Anti-Graffiti Network	311	Trash Complaints	Streets Dept.	311
Hazardous Highway Condition	Police Dept.	311	Trees, Fallen	Fairmount Park	215-685-4363
Hazardous Waste Household	Streets Dept.	311	Trees on Private Property	L&I	311
Homeless Issues	Outreach Coordination	215-232-1984	Water/Sewers	Water Dept.	311
Homeless Issues	Center City District	215-440-5500	Wild/Stray Animals	Animal Care/Control	311
Illegal Dumping/Sanitation Violations	SWEEP Unit	311			

**AD Allan Domb**  
Philadelphia's Largest Luxury Condominium REALTOR®

1845 Walnut Street, Suite 2200  
Philadelphia, PA 19103  
215-545-1500  
www.allandomb.com

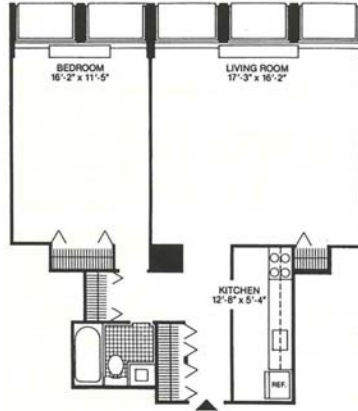
## Allan Domb Real Estate Presents Society Hill Towers

200-220 LOCUST STREET

**SELLERS WANTED,  
BUYERS WAITING!**

### Completely Renovated One Bedroom

Completely renovated one bedroom with dramatic Delaware River views, hardwood floors throughout, an open custom kitchen with high end appliances and finishes and an updated bathroom. 699 sf  
**\$279,900**



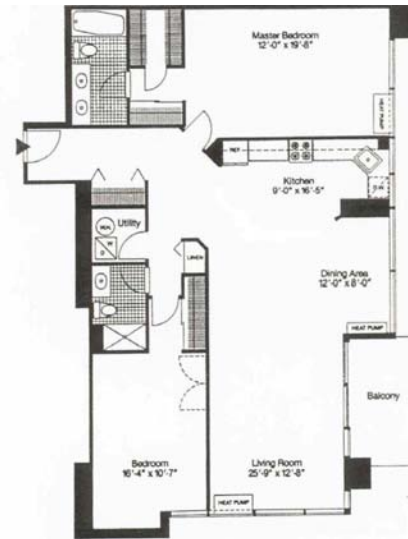
## Allan Domb Real Estate Presents Independence Place

233-241 S. 6TH STREET



### Spacious One Bedroom with Balcony

One bedroom with large kitchen and bath, excellent closet space and private balcony. 860 sf  
**\$289,900**



### Updated Two Bedroom with Southern Views

Two bedroom, two bathroom with balcony and expansive southern views, an updated open kitchen and bathrooms, wonderful closet space and lots of natural light. 1387 sf  
**\$775,000**





# 2013 Membership Total Approaches Record Set In 2008

By early June, 1,033 SHCA residents and businesses had already joined or renewed their membership — about 2 percent ahead of the same time last year. Last year's 2012 total of 1,036 is clearly within reach. Our record high of 1,063, set in calendar year 2008, is also possible by year's end. Seventy-eight new members have helped us keep our numbers up.

It is disappointing that 85 members from 2012 still have not renewed after two mail attempts and emails to those whose email addresses we have. We are sorry that these folks have lost interest in their neighborhood. If they are still receiving our weekly email newsletters and weekly crime reports, they should feel a bit embarrassed for their lack of support.

As a **special incentive** to all new members who renew at the \$100 Federal Friend level or above, we will provide a copy of the summary version of the Philadelphia Historical Commission's Register of Buildings in the Society Hill Historic District. This publication provides information about individual houses, organized by blocks. Discover your historic home's architect, builder, first owner, style and historical significance.

Why is your membership so important? Besides providing funding for our many neighborhood improvement projects, such as graffiti control, weekly sidewalk cleaning and plantings in Washington Square, numbers speak volumes. When our Board advocates on your behalf re: zoning changes, real estate taxes, crime problems, ramp issues, trash receptacles, street lighting, bus re-routing, etc., it makes a greater impact if they can say they speak on behalf of the majority of residents. You are also guaranteed a personal invitation to each of our social events — the Holiday Social, the Washington Square Affair, the Soiree at the Shambles and the Spring Fling.

Without member dues, SHCA would cease to function. Protect your neighborhood and your real estate investment. **Sign up today!**

Email [Mattdejulio@aol.com](mailto:Mattdejulio@aol.com) if you have any questions or wish to comment on why you are not a member. All comments will be shared with the Board, which is representative of every quadrant in our most unique historic neighborhood.

## SOCIETY HILL CIVIC ASSOCIATION

### Membership Application

Name \_\_\_\_\_

Address \_\_\_\_\_ Apt. # \_\_\_\_\_

City, State, Zip \_\_\_\_\_

Home Phone \_\_\_\_\_

Work Phone \_\_\_\_\_

email  
(print clearly) \_\_\_\_\_

IMPORTANT: Today most everyone communicates via email. Please be sure that we have your current email address — so that you can receive important updates between publication of our community newsletter. All SHCA emails will be judiciously screened, and rarely will we send emails more than once a week. Nor will we share your email address with anyone else. This convenient, 21st-century system helps save our civic association postage costs, while keeping you regularly informed.

#### Residential Memberships

- \$ 50 Basic Household Membership
- \$ 40 Senior/Student/Single
- \$ 100 Federal Friend
- \$ 150 Georgian Grantor
- \$ 300 Jefferson Benefactor
- \$ 500 Washington Benefactor
- \$ 1,000 Benjamin Franklin Benefactor

#### Business Memberships

- \$ 100 Institutions — 5+ employees
- \$ 60 Institutions — fewer than 5 employees

#### Additional Contributions

\$ \_\_\_\_\_ Washington Square Beautification      \$ \_\_\_\_\_ Franklin Lights

\$ \_\_\_\_\_ Sidewalk Cleaning/Graffiti Removal      \$ \_\_\_\_\_ Tree Tenders

\$ \_\_\_\_\_ Zoning and Historic Preservation      \$ \_\_\_\_\_ McCall School

Total Enclosed \$ \_\_\_\_\_

Charge VISA/MasterCard:

Number \_\_\_\_\_ Exp Date \_\_\_\_\_

Signature \_\_\_\_\_

The following topics are of special interest to me. I welcome receipt of email updates on these topics.

- Clean-Up Day
- Washington Square
- Zoning & Historic Preservation
- Franklin Lights
- Social Events
- Fundraising
- Dilworth House
- Property Taxes
- Local Crime
- Reporter
- Casino Issues
- Incidents & Alerts

Please return completed application to:  
**Society Hill Civic Association**  
P.O. Box 63503  
Philadelphia, PA 19147



## NIFTY NEIGHBORS IN MY BACKYARD

BY JANE BIBERMAN

## Diana and Jim Burgwyn

“The puffin was so adorable that I almost fell out of the Zodiac gazing at it.”

Once upon a time, Diana Burgwyn took a cruise to Scotland, and on one of the islands encountered thousands of puffins. “I couldn’t get near enough see them on the cliffs where they hang out,” she recalls. “But one day, when we were on a Zodiac boat, I saw a puffin in the air. I’ll never forget the experience. Its large and colorful beak gave it away instantly, as did its rotund body. It was so adorable that I almost fell out of the Zodiac gazing at it.”

Since she is a professional writer, Burgwyn decided to try her hand at a children’s book. This was kind of like a fish out of water since she had written only non-fiction books and magazine articles. But last year saw the publication of *Despina: The adventures of a motherless puffin, a lonely great auk and a pack of ferocious white rats*. A charming story with fetching illustrations by Jillian Kesselman, it is dedicated to Diana’s longtime mate, Jim. Though intended for children between 8 and 12, the book is suitable for adults; its message is the conservation of endangered species. I read it in one sitting.

In their airy apartment at the Hopkinson House, over an impromptu meal of pasta, salad and Italian wine, Diana and Jim talked about their mutual passions — for dogs, Mediterranean cuisine, foreign travel, music and politics. Jim, also an author, specializes in World War II, specifically Italy. His latest book is *Mussolini Warlord*, published by Enigma Press. Professor emeritus at West Chester University, where he taught for some 40 years, Jim still actively pursues his studies. At 77, he’s also an avid sportsman, who loves to play tennis and baseball. (He’s a member of the Grey Rocks, a 55-plus tri-state team.)

Conversation touched on a subject most dear to both of them: their beloved companion, Ivy, a deceased but not forgotten black Labrador who accompanied them to Austria, where they lived for two years in the 70’s as assistant directors of the prestigious Salzburg Seminar. It was an experience that produced Diana’s popular book *Salzburg: A Portrait*.

After dinner, Diana and I went to a concert presented by the Philadelphia Chamber Music Society (PCMS), featuring Musicians From Marlboro. She knew almost everyone in attendance at the Kimmel, having written a commemorative book about the performing arts center. She also penned a volume for Marlboro’s half-century anniversary. In addition, she is the author of *Seventy-five Years of the Curtis Institute of Music: A Narrative Portrait*. For years, she reviewed opera for a British publication.

“I wanted to be an opera singer,” Diana told me during intermission. “But I had some vocal problems, and my temperament wasn’t suited to that career. Also, I needed to earn a living.” A graduate of Friends’ Central and the University of Pennsylvania, where she majored in music, Diana has managed to pursue a career that encompasses all of her interests.

Today, Jim and Diana continue to work in their separate home offices on their respective books and articles. Diana is updating a piece she wrote on pet hoarding, now considered a serious mental illness, while Jim continues his scholarly research on a period of history he calls “not that unlike our own.”

He explains: “Although I am appalled by the violence that people perpetrate on one another in the name of nation, religion and ideology, I’m quite aware of the destructive impulses assailing us all. I’ve learned through my study of Italian Fascism — its glorification of guns and war — that civilization only protects us with a very thin veneer.”

A few days after we met, the Burgwyns departed on a one-week cruise on Portugal’s Douro River, which Diana will turn into a travel article. “It’s an area not well-known to many travelers,” she wrote me in an email. “Being in a region of peaceful villages full of history and old traditions is delightful.”

After leaving Portugal, the couple spent a few days in Rome with close friends. Jim met with several scholars regarding a book he will co-edit.

A compulsive emailer, Diana summed up their trip — this one as well as their life’s journey together — in a brief missive: “It seems like we just aren’t completely happy unless we’re writing!”



Order *Despina* at [amazon.com](http://amazon.com) or [barnsandnoble.com](http://barnsandnoble.com)





# We Know the Neighborhood

## Residential Mortgages from East River Bank

Whether you're moving in, moving up or refinancing, talk to us about our residential mortgage program. Sound advice. Safe and secure loans. Exceptional service. And great rates, too.



Contact Nancy Karahuta today to discuss your needs at (267) 295-6450, NMLS# 941171.



[eastriverbank.com](http://eastriverbank.com)

Christopher P. McGill, President/CEO

✓ East Falls    ✓ Roxborough    ✓ Old City

(267) 295-6420



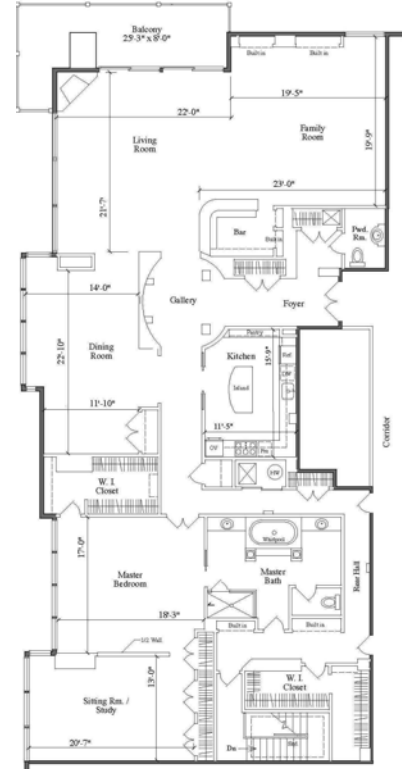
With our suite of online and mobile banking services, a network of 50,000 Allpoint® ATMs, free interbank fund transfers and even a courier service for business accounts, you can bank conveniently and securely, wherever you go.



**AD Allan Domb**  
Philadelphia's Largest Luxury Condominium REALTOR®

1845 Walnut Street, Suite 2200  
Philadelphia, PA 19103  
215-545-1500  
www.allandomb.com

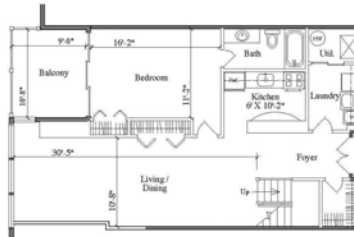
## Luxury Living Around Washington Square



### Independence Place

241 S. 6TH STREET

Bi-level penthouse featuring magnificent living spaces, a chef's kitchen, luxurious master suite and panoramic river and city views. 4403 sf  
**\$1,800,000**



*Before, my mommy would keep ice cream away. Now my allergist gives the Okay!*



### Kids really do outgrow food allergies.

However, parents are often unsure if a forbidden food can be reintroduced into a child's diet. For more information contact **Allergy & Asthma Specialists**, the premier medical practice in the Delaware Valley caring for adults and children with allergies, asthma, eczema, and recurrent infections.

**FOOD ALLERGY TESTING** and **FOOD CHALLENGES** in a medically supervised environment are a practice specialty. Under the supervision of an allergist, we can safely determine if your child needs to continue food restrictions.



For Food Allergy Testing and Challenges, call:

**1-800-86COUGH**  
www.AllergyandAsthmaWellness.com

- Blue Bell • Center City • Jenkintown
- Pottstown • King of Prussia
- Lansdale • Doylestown • Collegeville