



SOCIETY HILL

# Reporter

www.societyhillcivic.org

## The Birth of a Museum



**Michael Quinn, CEO,  
American Revolution  
Museum**

The Society Hill Civic Association (SHCA) is excited to invite the community to our General Membership Meeting on September 17 to hear Michael Quinn, CEO of the American Revolution Museum, give us an insider's account of the creation of the nation's premier museum on the American Revolution.

The Museum of the American Revolution, 3rd and Chestnut Streets, will chronicle the full sweep of the war — the deadly struggle between British and American forces, as well as the growth of the idea of independence. The award-winning exhibit firm MFM Design is creating powerful displays of artifacts, immersive environments and interactive experiences that will bring to life the personal stories of the founding generation. Construction has begun and the museum is slated to open in late 2016.

Michael Quinn joined the Museum of the American Revolution in April 2012. He had previously served as president and CEO of Montpelier in central Virginia. During his tenure, he helped raise over \$90 million and carried out initiatives that authentically restored the home of James Madison and its surrounding environment. He transformed Montpelier from a private estate into a premier historic home, establishing a vibrant educational center that provided in-depth study programs on American constitutional theory.

The meeting will take place at 7:30 p.m. in the Zubrow Auditorium on the first floor of Pennsylvania Hospital inside the main entrance at 8th Street near Spruce. All neighbors are invited to attend. Prior to the General Meeting, we will hold our monthly Board Meeting at the Hospital's Great Court Conference Room. Current SHCA members are welcome to attend.

### POP - UP P I C T U R E S

Spruce Street Harbor Park, on the Delaware River, was recently recognized as one of the world's best urban beaches by *The Huffington Post!*



**WEDNESDAY**  
September  
**17**

**MARK YOUR CALENDAR**  
Society Hill Civic Association Meetings  
Wednesday, September 17, 2014

**6:00 p.m. Board of Directors Meeting**  
Pennsylvania Great Court Conference Room  
All SHCA members are welcome.

**7:30 p.m. General Membership Meeting**  
Pennsylvania Hospital Zubrow Auditorium  
All neighborhood residents are invited to attend.

**Speaker:** Michael Quinn, CEO, American Revolution Museum  
**Topic:** Update on the creation of this unique museum.



**mw** designgroupllc.com

267.872.8814



SOCIETY HILL

*Reporter*



**Managing Editor**  
Sandra Rothman

**Columnists**  
Marilyn Appel  
Claire Batten  
Jane Biberman  
Matt DeJulio  
Lorna Katz-Lawson  
Martha Levine  
Jim Murphy  
Richard De Wyngaert

**Contributors**  
Del Conner  
Laurel Landeau  
Scott Quitel  
Karri Sensing  
Julia Shaver  
Katy Wich

**Photographer**  
Bonnie Halda

**Graphic Design**  
judy@parallel-design.com

**Press Release Liaison**  
c/o Matt DeJulio  
mattdejulio@aol.com

**Advertising Manager**  
Lenore Hardy  
Hardy@drexel.edu

**Submission Deadlines**  
November/December Issue  
Advertising:  
October 1  
Editorial:  
October 4

**Society Hill Civic Association**  
P. O. Box 63503  
Philadelphia, PA 19147  
Tel. 215-629-1288

**Website**  
Find past issues of the *Reporter* with color photos at [www.societyhillcivic.org](http://www.societyhillcivic.org).

**Submissions**

We want to hear from you. Our goal is to print news of interest to Society Hillers – happenings in and around our community for residents, businesses and professionals. Direct your editorial submissions and/or queries to Sandra Rothman by phone at 717-715-5791 or email [sandra.rothman@aol.com](mailto:sandra.rothman@aol.com). To publicize an event, submit all press releases directly.

Materials must be submitted in writing – via mail or email – and must include the name of a contact person. Edited submissions will be considered for publication if the subject matter is community related and if space allows. Otherwise, upcoming events of interest may be listed in the Community Calendar. Letters to the Editor will be considered for publication only if signed and the writer provides contact information.

**SHCA Board Officers and Directors**

**President**  
Robert Curley

**First Vice President**  
Jim Moss

**Second Vice President**  
Martha Levine

**Recording Secretary**  
Marlene Molinoff

**Treasurer**  
Marc Feldman

**Directors-at-Large**  
George Dowdall,  
Diane Harrison,  
Bill Landy, Sissie Lipton,  
Fred Manfred, Mary Purcell,  
Vijay Verma, Kim Williams

**Northeast Quadrant**  
2015 Heather Steiner  
2016 Lisa Unger  
2017 George Kelley

**Northwest Quadrant**  
2015 Mary Tracy  
2016 Amy DeMarco  
2017 Norman Lieberman

**Southeast Quadrant**  
2015 Laura Temple  
2016 Jeff Berry  
2017 Barbara Gelman

**Southwest Quadrant**  
2015 Marilyn Appel  
2016 Daniel Horowitz  
2017 Joan Kleinbard

**parallel.**  
*design*

**Find our designs online.**

**BeyondTheLibertyBell.org**  
**Parallel-Design.com**

215-476-4040

Logos  
Websites  
Banners  
Books  
Brochures  
Invitations

Newsletters  
The Award-Winning Society Hill *Reporter!*



*Bulletin Board*  
*Snapshots of the people who make SHCA work.*



**Keri White** has lived in Society Hill since 1994. "I can't believe it's been 20 years," she says. Keri grew up in suburban North Jersey, attended Vanderbilt University and has lived in both Madrid and London. Residing in these cities made her a confirmed urban dweller. She considered New York, but her intended, Matthew White, whom she met while he studied law at Vanderbilt, planned

to return to his native Arkansas. They compromised on Philadelphia and never looked back. Matt, a partner at Ballard Spahr law firm, walks to work every day, and Keri works from home as a writer and marketing consultant. Her book, *The Mommy Code*, a humorous and useful guide to surviving parenthood, was written mostly in her Spruce Street kitchen. It is available locally at Headhouse Books and on Amazon. Of the neighborhood, she says, "We adore Society Hill. We've raised our

kids here, Cormick, 17, and Kelsey, 15, and are grateful to live in such a beautiful, engaging and vibrant community. We have been involved in Three Bears Park, McCall School and St. Peter's School. Both Matt and I have served on the SHCA Board, and we're both active in several other non-profits. Although we're transplants, Philly is definitely home." Keri and Claire Batten alternate writing our Philly Food Lovers, South Street Headhouse District and The Foodtrust columns. The pair initiated On Our Shelf, as well.

**Elizabeth Shuttleworth**, SHCA Designated Director for St. James Court, moved to Society Hill from Johannesburg, South Africa, in 1989. She is a consultant who provides expertise in general management, business development, operations and process improvement to clients with public, private and not-for-profit companies in a wide range of fields. Her husband, Richard Gibson, a resident

of St. James Court for more than 30 years, is a psychotherapist practicing in Philadelphia and Easton, Maryland. Both Elizabeth and Richard recognize the value that the Society Hill Civic Association delivers in enhancing our vibrant Society Hill neighborhood. They have been active participants in their close-knit St. James Court

community, each serving in the capacity of council president for a number of years. The couple enjoys shopping for great produce at our local farmers' markets, cooking, reading and seeing movies at the Ritz.



**Vijay Verma**, one of our eight board directors-at-large, has lived in Society Hill for over three years with his wife, Pooja Singh, and his eight-year old son, Vikram. Vijay is a marketing manager for Comcast, and Pooja is a Transplant Nephrologist at Thomas Jefferson Hospital. The family enjoys skiing, tennis and exploring the neighbor-

hood. They also appreciate our community's many celebrations, including those at Halloween, Fourth of July and New Year's. Vijay feels that our civic association plays an important role in insuring the preservation of Society Hill's history. He believes that community involvement is necessary to keep the area growing and thriving.

**In This Issue...**

- Page 5** President's Message  
SHCA Finances are Sound
- Page 11** This Old House: Porches, Doors and Historic Preservation
- Page 12** Exploring the City: News, Updates, Progress Reports
- Page 18** Out and About: Fun Fall Festivities
- Page 21** Philly Food Lovers: A Spicy Newcomer
- Page 23** On Our Shelf: A New Crop of Reads
- Page 27** South Street Headhouse District: Fashion Under the Shambles
- Page 34** Nifty Neighbors: Victoria Steiger and Laurie Olin



**Say Cheese!**

*Fresh and LOCAL*  
Every Day!

READING TERMINAL MARKET  
since 1895

Valley Shepherd

Downtown Cheese

Salumeria

**READING TERMINAL MARKET**  
MON-SAT 8-6 & SUN 9-5 • \$4 PARKING • 12TH & ARCH STREETS • 215-922-2317  
[www.readingterminalmarket.org](http://www.readingterminalmarket.org)

**BEST OF PHILLY**  
2006

**Philadelphia Gardens, Inc.**

GARDEN INSTALLATION + DESIGN by Toni Ann Flanigan  
215.951.9193 // [www.philadelphigardens.com](http://www.philadelphigardens.com)

**SOCIETY HILL SYNAGOGUE**

Build a relationship with  
Judaism on your own terms

**Unusual ✧ Unassuming ✧ Unforgettable**

Society Hill Synagogue is a welcoming and diverse Jewish community. Based on a Conservative Liturgy, SHS embraces a unique approach to worship, spirituality, & education through prayer, music, & song.

**We Invite You to Worship with Us for the High Holy Days**  
Rosh Hashanah - September 25 & 26      Yom Kippur - October 4

We serve the religious & social needs of the Jewish community in Center City Philadelphia and its surrounding areas.

For additional information, contact SHS Executive Director Betty van de Rijn

✧ 215.922.6590 ✧ [bettyv@societyhillsynagogue.org](mailto:bettyv@societyhillsynagogue.org) ✧ [www.societyhillsynagogue.org](http://www.societyhillsynagogue.org) ✧

**Society Hill Synagogue ✧ 418 Spruce Street ✧ Philadelphia, PA**

**P R E S I D E N T ' S M E S S A G E**

BY ROBERT CURLEY, SHCA PRESIDENT

Given that this is a historic district, I decided to look up the first issue of the *Society Hill News*, published in February 1958 by the then Society Hill Area Residents' Association. Its message deserves repeating:

*Nearly 300 residents and property owners of Society Hill have become members of the Society Hill Area Residents' Association, thus allying themselves with SHARA's objective — "to make and keep Society Hill a safe, attractive and friendly place in which to live and work."*

*About one-fourth of SHARA's members are active on the various committees to which they bring their enthusiasm and their special talents and abilities. The officers, executive board members and committee workers are serving without remuneration except the satisfaction and thrill of working for the best interests of their neighbors and neighborhood. ... There's a job for anyone who is interested!*

Every resident of Society Hill is encouraged to get active in one or more of SHCA's 20-plus committees. Whether you decide to volunteer

as a block coordinator, help out in the continuing restoration work in Washington Square or participate on the zoning and historic preservation committee, you will enjoy the opportunity to meet your neighbors and help "make and keep Society Hill a safe, attractive and friendly place in which to live and work."

Making the community safe, appealing and attractive is an ongoing process. Below is a summary of how and where the Society Hill Civic Association spends your membership dues. Dues pay for the Center City District to pick up the trash left on the streets after the Streets Department collects it, for graffiti removal, and for other SHCA-supported activities like the "Fix the Brix" program.

If you are not yet a member, please take the time to join SHCA. If you want to be more active in the neighborhood and get involved in the work we do, visit [societyhillcivic.org](http://societyhillcivic.org) for a list of volunteer opportunities. Contact administrator Matt DeJulio at 215-629-1288 or [mattdejulio@aol.com](mailto:mattdejulio@aol.com) for more information.



**Robert Curley**

## SHCA Finances Are Sound

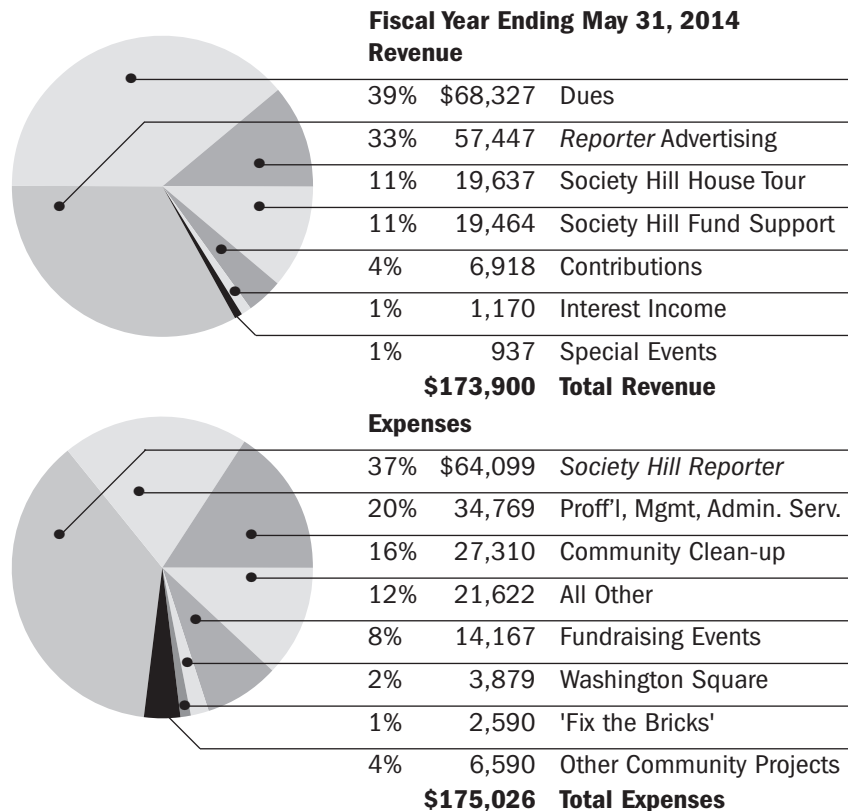
SHCA completed its fiscal year at the end of May 2014 with a minor deficit of \$1,126. Despite the deficit, SHCA remains in sound financial health. Revenue of \$173,900, expenses of \$175,026 and an ending fund balance of \$290,401 were reported.

The two adjacent pie charts show the makeup of revenue and expenses.

The major sources of revenue were dues, advertising in the *Society Hill Reporter*, House Tour ticket sales and support from the Society Hill Fund.

Main expenses were production and distribution of the *Society Hill Reporter*, legal, accounting, management and administrative services, and regularly scheduled cleanup of our neighborhood. Other expenses were fundraising events like the Washington Square Affair, civic projects such as Washington Square beautification, and "Fix the Brix" and the Society Hill House tour.

Be assured that the Board of Directors monitors SHCA's financial performance monthly and makes every effort to manage its funds thoughtfully and prudently.







# The CENTER for GROWTH

psychological counseling • therapy • support groups

**Is Your Life Unmanageable?  
Or, Are You Simply Seeking A Coach  
To Help You Make Better Decisions?**

**We Can Help.**

- Individual Therapy
- Couples Therapy
- Family Therapy
- Play Therapy
- Parenting Support Group

Present this ad at your 1<sup>st</sup> session & your 2<sup>nd</sup> session is FREE.

233 S. 6th Street, Suite C33  
Philadelphia, PA 19106

[www.therapyinphiladelphia.com](http://www.therapyinphiladelphia.com) • (267) 324-9564

Thinking of Renovating your Kitchen or Bath...



## TEKNIKA DESIGN GROUP

Kitchens — Baths — Custom Cabinetry

215-922-4414  
[teknikadesigngroup.com](http://teknikadesigngroup.com)  
225 Race Street  
Philadelphia, PA 19106

Receive a gift at your initial consultation when you mention this ad!



# O.C.I.

## Tree & Landscape

for all of Philadelphia's outdoor needs

**TREE + LANDSCAPE + MASONRY**

267.712.9624

[ocitreeandlandscape.com](http://ocitreeandlandscape.com)

**SAFE AND SOUND IN SOCIETY HILL**

BY MARILYN APPEL

**News From the Philadelphia Parking Authority**

Metered parking is now free on “Make it a Night” Wednesdays after the posted rush hour and on Old City First Fridays after 5 p.m. You can also park without charge every Saturday after 11 a.m. between Thanksgiving and New Year’s Day and on the following holidays: New Year’s Day, Easter Sunday, Memorial Day, Independence Day, Labor Day, Thanksgiving and Christmas. In addition, the price on meters has increased to \$3 per hour in Center City and \$2.50 outside this zone, so make sure you get enough time on tickets from the kiosk or put enough money into meters. You can now pre-pay starting at 6 a.m. on non-rush-hour blocks. In other words, you can put money in and tell the meter to start your time for whenever the posted time starts. Remember to place the ticket receipt on the curbside dashboard.

**Reminders Worth Repeating**

OPERATION ID, a burglary deterrent system,

is available for all residences and businesses. Operation ID allows you to label your valuables, so that they can be easily identified and traced. The service is in operation throughout the city. If thieves attempt to pawn stolen property, they will get caught with the goods. For more information, call Officer Lori Smith at 215-686-3063.

Remember to keep your outside lights on at night. Put your security system **on** every time you leave the house and when you go to sleep for the night.

You should also **not** walk and talk on your mobile phone or plug up your ears with music. This is distracting and you fail to recognize what’s going on around you.

If you see something strange in your neighborhood or hear unusual noises from next door, be alert and call 911.

Marilyn Appel has served as chair of the Sixth District’s Police District Advisory Council since 1980.

**‘Fix the Brix’**

BY MARTHA LEVINE

Autumn is a great time to make sidewalk repairs before winter settles in. Over the last five years, SHCA’s “Fix the Brix” program has offered homeowners a subsidy to level their front sidewalks, a 40 percent reimbursement of the total bill — up to \$300. Uneven sidewalks can cause of trips, falls and unnecessary injury. Remember: your sidewalk is your responsibility!

Martha Levine, an active SHCA board member, has created and chaired many projects, such as Welcome Baskets, Block Coordinators, “Fix the Brix” and the Franklin lights restoration project. She also co-chairs the yearly house tour.

**To participate, follow these easy steps:**

- Get several estimates from qualified masons. We can email you a suggested list. Sometimes an arborist is needed to trim tree roots.
- Choose a mason that fits your budget.
- Have the work done to your satisfaction. It’s a good idea to take before and after photos.
- Make copies of the invoice, including one for yourself, and mail to us at: SHCA, P.O. Box 63503, Philadelphia, PA 19147.
- Receive a check within a few weeks for 40 percent of the bill — up to \$300.

For more information or to obtain a list of masons and arborists, contact me at [marthalev6@gmail.com](mailto:marthalev6@gmail.com) or 215-629-0727.





# SONOS

ENJOY ALL OF YOUR MUSIC,  
IN EVERY ROOM OF YOUR HOME,  
WIRELESSLY.

---

No wires and no drilling.  
Ask for a FREE in home consultation.



Apple Specialist

116 S. 13th Street  
Philadelphia, PA  
215-599-0794  
[springboardmedia.com](http://springboardmedia.com)





*All Gloria Dei's venerable trees remained standing in Hurricane Sandy, preserving the historic graves below.*

## HISTORIC TREES UNHURT IN HURRICANE SANDY

**... Thanks to Liberty Tree & Landscape Management**

When Hurricane Sandy pummeled the city in late October, 2012, not one of the many 200+-year-old trees at Gloria Dei Church on Columbus Blvd. came down. Pastor Joy Segal credits that feat to the outstanding work of Liberty Tree and Landscape Management.

See why so many people recommend Liberty Tree on Angie's List. *Your satisfaction is guaranteed!*

**Some Other Liberty Tree Clients:**

- Pennsylvania Hospital*    *Elfreth's Alley*
- Rittenhouse Square*    *National Park Service*
- Washington Square*    *Bartram's Garden*
- Philadelphia Cricket Club*



215. 886. 6111 | Orelan, Pa  
 215. 725. 3637 | Philadelphia, Pa  
 215. 572. 6937 | Fax  
[www.libertytreecare.com](http://www.libertytreecare.com)

**Mike Duffy**  
 Certified Arborist  
 PD-1766A



## COMMUNICATION MADE EASY



ON DEMAND PRINTING SOLUTIONS

Media Copy is a full service digital printing company with offices in Center City Philadelphia, and the suburbs. State of the art technology, extraordinary customer service and attention to detail place us apart from the competition. Our infrastructure allows us to provide our customers with high quality products in a cost effective fashion. From conception to completion, the basic to the complex, we are on the job with the personal attention you should expect.

**Philadelphia Location:**  
 1310 Sansom Street · Philadelphia, PA 19107  
 phone: 215.717.5151 · fax: 215.717.7400

**Media Location:**  
 11 East State Street · Media, PA 19063  
 phone: 610.566.8499 · fax: 610.566.4513

[www.mediacopyonline.com](http://www.mediacopyonline.com)



*All of Shakespeare's comedies contain a song except for one. Do you know which?*

## FRIENDS SELECT

*The Center City Quaker School that Sparks Fascination*  
[friends-select.org](http://friends-select.org)



---

**Z O N I N G   A N D   H I S T O R I C   P R E S E R V A T I O N**


---

BY LORNA KATZ-LAWSON

**Zoning Applications Update****238-240 South 4th Street**

The Zoning Board of Adjustment (ZBA) appeal for a curb cut with five-car parking to serve the historic Norris-Cadwalader and Shippen-Wistar houses has been continued. This will allow time for the Historic Commission to make its decisions. The application had been refused a permit due to a revised zoning law for Center City, which will not permit private accessory parking for single-family homes if accessed from a primary street.

SHCA testified in favor of the variance, provided that a proviso is made restricting future use of the site to one or two one-family residences. It felt that such low intensity use was the best way to preserve the historic houses. The negative impact of the driveway on the street also would be minimized with single-family use, again because of less intense use. Since the driveway width and the setbacks from it on the sidewalk would cause the loss of two parking spaces on the street, the owner agreed to give up the existing loading zone closer to the corner, thus restoring one space.

Jon Auerbach, representing the Bingham Court Association's 27 households, testified in opposition to the proposed variance. He noted that when the property was purchased it included the accessory parking lot/formal garden that occupies the northeast corner of Locust and 4th Street, and the owner chose to sell the lot, thus creating the resulting "hardship." He also questioned the safety of the location of the driveway, due to the nearby location of St. Mary's Elementary School.

The City Planning Commission recommended for denial, but the Board deferred a vote so that it could discuss the matter more fully. At this writing, there is no known decision.

**513 Spruce Street**

The applicant appealed for a small fourth-story addition about five feet higher than the maximum allowable height. SHCA wrote a letter of opposition, based on the belief that the applicant had not convincingly demonstrated an "unnecessary hardship" at either of the two ZHP public meetings that would justify asking for a variance. In the ZBA hearing, the applicant presented more detailed data to support the appeal, and ZBA granted the height variance.

**Recent Decisions by PHC****513 Spruce Street**

Philadelphia Historical Commission (PHC) concurred with the Architectural Committee and staff recommendations to approve the design "in concept" pending further review of materials and design of architectural details.

**319B South 2nd Street**

PHC approved a ramp constructed of permanent materials, such as brick and concrete, with the condition that the ramp could be dismantled in the future without scarring the existing building. The concept of "reversibility" had been put forth by the Preservation Alliance and a member of the Architectural Committee (AC) and supported by SHCA. PHC conditioned its approval on compliance with the Americans with Disabilities Act's standards and other zoning and building codes. Railings are to match the neighboring entrances of the Penn's Landing Condominiums. PHC staff will review and approve design details.

**238-240 South 4th Street**

Despite having made a recommendation against converting the historic garden to parking use, the specific design comments made by AC were largely adopted by the applicant, who appeared at the PHC with a significantly revised design.

The design now includes a garden wall that screens the parking area from public view and new entrance gates of solid wood — replicating those at the National Park Service parking lot on the north side of Locust Street — with gate operating hardware invisible from the street. One of the large trees and most of the wisteria vine would be salvaged. The resulting truncated garden — approximately 40% of the original — will appear to be symmetric. The applicant rejected AC's recommendation for permeable surface paving for the parking area.

The PHC voted to approve the revised application.



**Construction is progressing at the Toll Brothers 410 South Front Street site.**

---

Lorna Katz-Lawson is a practicing architect with John Lawson Architects. She has been a Society Hill resident since 1973, and currently chairs SHCA's Zoning and Historic Preservation Committee.

**ADORNAMENTI**  
 1106 Pine Street  
 215.922.2722

**Collection  
 of  
 Art-To-Wear Jewelry**



**SHOW OF HANDS**  
 1006 Pine Street  
 215-592-4010

**Collection  
 of  
 Mid-Century Murano Glass  
 and  
 Contemporary Crafts**

We contribute to Welcome Basket.  
 We are located on Historic Antique Row.

**WE PICK UP  
 FURNITURE DONATIONS**  
**FAST | FREE | TAX-DEDUCTIBLE**

**MOVING? DOWNSIZING? REMODELING?**  
 Your donation supports self-determination  
 in the hands of the African community.



Tyron Lewis  
Community Gym



Uhuru  
Health Fest



Uhuru  
Jiko Kitchen

**UHURU FURNITURE  
 & COLLECTIBLES**  
*...driven by African self-determination*

[uhurufurniturephilly.blogspot.com](http://uhurufurniturephilly.blogspot.com)  
 215-546-9616 | 832 N. Broad St | [www.apedf.org](http://www.apedf.org)

An economic development project of the African People's Education and Defense Fund

We offer a complete line of services to care for your property.

## Complimentary Consultation

By Peter McFarland, Certified Arborist, MA-0164A

Call our office at **215-844-TREE** to make an appointment for a consultation to review your property.

***Tree & Shrub Healthcare***

- Custom Tree Pruning
- Tree Removal
- Cabling & Bracing
- Insect & Disease Management

***Landscaping***

- Planting Trees
- Planting Gardens
- Custom Shrub Pruning

***Sidewalks***

- Brick Replacement



**MCFARLAND**  
Tree & Landscape Services

[www.mcfarlandtree.com](http://www.mcfarlandtree.com)



CERTIFIED ARBORIST  
ISA



MEMBER  
TCLIA  
VOICE OF TREE CARE





**THIS OLD HOUSE**

BY CHUCK GROSHONG AND DANIELLE GROSHONG-KEPERLING

# Porches, Doors and Historic Preservation

At first glance, porches and doors may seem like no more than a way to get in or out of a home or business. But there is much more to these architectural gateways. They are frequently exemplary pieces of carpentry that give us a peek into the artisanship of our architectural history and have a quality of craftsmanship difficult to reproduce today.

The entrance of a house often defines its architectural identity more than any other element. This is particularly true right here in Society Hill, where the flat facades of Colonial row houses can easily run into each other.

In Colonial and early-American porches and doorways, elements of several different architectural styles can be seen.

- The Post-Medieval English Style (1600-1700) can be seen in transom lights and drop finials (those that project downwards).
- Dutch influences show up in elevated wooden stoops, eaves and slender turned columns with square bases.
- The French tendencies find their way into our entrance architecture with raised paneled doors and arched brick lintels.
- Our very own early Colonial entrances are more pragmatic — with simple triangle pediments and smaller porch platforms.
- Late Colonial entrances became more expansive and decorative — with curved brackets, keystones and decorative sunbursts above the doors, as the Georgian and Federal styles made their way to center stage.

When evaluating the significance of your historic porch, there are two important questions to ask:

**What did your entranceway look like originally?**

More often than not, changes were made to your porch that may not reflect the original architecture of your house. You can consult with a contractor who specializes in historic architecture to evaluate any necessary restoration work. Early photographs, insurance maps, tax records, documents at historical societies or libraries, house histories and physical evidence can all be used to make a determination of what the porch would have been originally.



The entrance of a house defines its architectural identity, as shown in this example of Federal architecture.

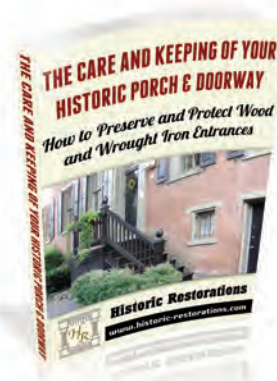
**What historical evolution has your porch or doorway experienced?**

There is a great debate in the preservation world — is it more important to preserve the original architecture of a building or to honor the architectural evolution it experienced over the years? This is not an easy question, and everyone arrives at a different answer. Determining what architectural evolutions your entranceway has experienced may help you decide which preservation is important to you.

Exploring the answers to these two questions will help you define which architectural features make up the character of your entranceway, how it contributes to the overall architectural fabric of your historic building, and which period architecture you want to preserve.

Keep in mind that Society Hill is a historic district. Any changes to the outside of your house must be first presented to SHCA's Zoning and Historic Preservation Committee and be approved by the Philadelphia Historical Commission.

This experienced father/daughter preservation team owns and operates Historic Restorations, a construction firm specializing in historic buildings.



To receive our free guide, *The Care & Keeping of Your Historic Porch & Doorway: How to Preserve & Protect Wood and Wrought Iron Entrances*, contact Moira at 717-291-4688 or [mkarahalis@historic-restorations.com](mailto:mkarahalis@historic-restorations.com).



**COSMOS**  
FINE NAIL SALON

PHILADELPHIA'S SALON FOR MEN & WOMEN  
[NAILS ~ WAXING ~ MASSAGE]

<p><b>1204 WALNUT STREET</b> (215) 627 - 1020 mon-wed: 930a - 700p thurs-fri: 930a - 800p sat: 930a - 600p sun: 930a - 600p</p>	<p><b>1308 SANSOM STREET</b> (215) 545 - 5456 mon-wed: 930a - 700p thurs-fri: 930a - 700p sat: 930a - 600p sun: closed</p>
---	--

⊕ RESERVATIONS RECOMMENDED ⊕

## EXPLORING THE CITY

BY JIM MURPHY

## News, Updates, Progress Reports...



VIPs at the dedication of the Washington Avenue Pier view the Delaware River from the spiral staircase of "Land Buoy," a creation by Philadelphia artist Jody Pinto. The work, which includes a 55-foot spire topped by a soft blue light, serves as a beacon for boaters and an invitation to recall the pier's history as Philadelphia's Immigration Station.

After writing some 21 Exploring the City columns, I felt it was time to review, revisit or revise some past stories, correct errors, add items I didn't have room for before... and even include my own personal awards.

**New: Washington Avenue Pier** (January/February 2013) The old Immigration Station at Washington Avenue and Columbus Boulevard has been transformed into a new waterfront pier park. Highlights include: an elevated boardwalk to the very tip of the pier, a chance to touch the water and enjoy unique and formerly unavailable views up and down the river. Plus you can go partway up a 55-foot-tall, sculptured beacon titled "Land Buoy" at the end of the pier. This is the spot where almost one million immigrants entered the United States. Come see this latest addition to Philadelphia's expanding waterfront and series of parks.

**Delayed: Christ Church Great Bell Ceremony** (January/February 2014) Dedication of the new display for Christ Church's Great Bell has been postponed due to more pressing issues. No word yet on a new date.

**Moved:**

**National Archive Center City Office** (November/December 2011)

Because of budget cuts, the National Archives facility in Center City has been closed. Records and some staff have been transferred to 14700 Townsend Road in Northeast Philadelphia. For information, call 215-606-0112.

**Corrections:**

**Irish Memorial** (Spring/Summer 2011) The 400-plus pieces in the memorial were not welded together in Philadelphia. They were cast in 400 interlocking chunks of bronze in Colorado, welded together there and transported here in one huge 30-foot piece. Two satellite figures were attached to the base at installation.

**Gaskill Street Baths** (Spring/Summer 2012) Southwark's boundaries were listed incorrectly. The old Southwark was twice as large as it is now, bounded by the Delaware River on the east, Passyunk Avenue on the west, South Street on the north and Greenwich Street on the south.

A.R.E.A.  
interiordesign

for a complimentary consultation  
please contact mark randall  
cr8ivmark@verizon.net

620 christian street  
philadelphia pennsylvania 19147  
215 336 4770

*"There are things known and things unknown  
and in between are the doors."*  
— Jim Morrison (1943 - 1971)



EXPLORING THE CITY

# ...Corrections and More

**My Personal Awards:**

**Most Incongruous Image** (March/April 2014)  
 The huge statue of William Penn on top of City Hall. The 37-foot sculpture by Alexander Milne Calder is thought to be the largest statue atop a building anywhere in the world. Yet the Quakers were plain people who stressed simplicity. What would William Penn think of his own statue? Not much, I would guess. But I still love the building.

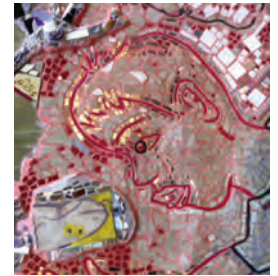


**Saddest Spot** (March/April 2011)  
 Seeing a small gravestone at Old Pine Street Churchyard that simply says, "Our Charley." Turns out it

was for Charley Brainerd, "a lovely little boy of five years," who died on May 20, 1849. He was the son of Reverend Thomas Brainerd, pastor of the church for 30 years, who was seriously unnerved by Charley's death.

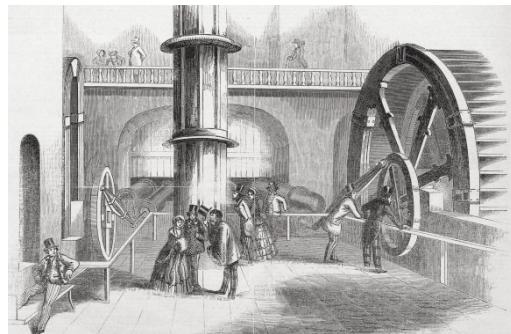
**Poorest Planning** (September/October 2013)  
 The decision by Pennsylvania and New Jersey to start work on the Delaware River Bridge (now the Ben Franklin Bridge) in 1922 — without agreeing how to fund it. Pennsylvania wanted the bridge to be toll-free and paid for by taxes. New Jersey wanted tolls. Work reportedly stopped shortly before completion, and there was even talk of tearing the bridge down. The Supreme Court gave the two sides six months to solve the problem. Fortunately, leaked publicity about the politically powerful Vare family's reported skimming of funds to award contracts to relatives changed Pennsylvania's mind. The agreement was amended in May 1925, and the bridge opened the following year.

**Biggest Boom** (July/August 2012)  
 The explosion of the 64-gun HMS Augusta in the Delaware River in October 1777 after running aground and being attacked by Americans at Fort Mifflin. Thomas Paine, author of *Common Sense*, who was on the road between Germantown and Whitmarsh, wrote to Ben Franklin that the sound was "like the peal of a hundred cannon at once." The Augusta was the largest ship ever lost by the British to the Americans in two wars.



**Story Addition:**  
 Self-Portrait of Isaiah Zagar, Philadelphia's mosaic artist (November/December 2012): Isaiah Zagar is the little boy in "Animal Dreams," with his fishing pole and a caught fish (lower left). This mosaic, his favorite, is on the north side of Society Hill Playhouse's building, 507 South 8th Street.

**Best explanation of the inner workings of the Water Works** (July/August 2013)  
 A 16-minute Philadelphia Water Works film titled "Our Story." Artfully done, with some great animation. It's available online at [fairmountworks.com/our-story](http://fairmountworks.com/our-story).



**Interior view of the Fairmount Water Works.**  
 Photo from PhillyHistory.org, a project of the Philadelphia Department of Records [www.phillyhistory.org/PhotoArchive/Detail.aspx?assetId=73094](http://www.phillyhistory.org/PhotoArchive/Detail.aspx?assetId=73094)

**Thoughts? Ideas? Story Suggestions?**  
 Please let me know at [murfman1@comcast.net](mailto:murfman1@comcast.net).

Jim Murphy, a freelance direct-response copywriter, has run his own marketing consulting business since 2004. He's also a certified member of the Association of Philadelphia Tour Guides.

**Old Pine Street Church**  
 Established 1768

Where History, Faith,  
 Message, Music &  
 Fellowship intersect at

412 Pine Street  
 Sunday Worship  
 10:30am  
 215-925-8051  
[www.oldpine.org](http://www.oldpine.org)

**A Martin Herring, Esquire**  
 Your Society Hill Neighbor

**Wills, Estates, Trusts**

Experienced and Reasonable  
**Free Consultation**  
 215.568.9804

## R. Chobert Decorating Co.

*Painting/Wallcovering  
Interior/Exterior  
Creating Beauty Since 1967*

**Rupert Chobert**

641 Reed Street  
215.389.7788 TEL  
267.977.7443 CELL  
215.755.6655 FAX



## Howard J. Goldblatt GENERAL CONTRACTOR, INC.

**Historic Restoration  
Kitchen, Bath, General Renovation  
Window Replacement**  
35 Years Experience  
References Available

**610-642-1834**      **hjggc@verizon.net**

| Philadelphia License #398432 | Pennsylvania License #20665 |



**QUEEN VILLAGE  
FAMILY DENTISTRY**

**JEFF CABOT, DMD**

[WWW.QUEENVILLAGEFAMILYDENTISTRY.COM](http://WWW.QUEENVILLAGEFAMILYDENTISTRY.COM)

**215-925-7330**



**Patricia Bentz CPDT-KA, CDBC, CNWI**  
Certified Dog Trainer & Behavior Consultant

*"Going to the Dogs"*

### K-9 Training & Behavioral Therapy

- One-on-One Obedience Training at Home
- Behavioral Consultation
- Puppy Head-Start
- Nose Work Group Classes

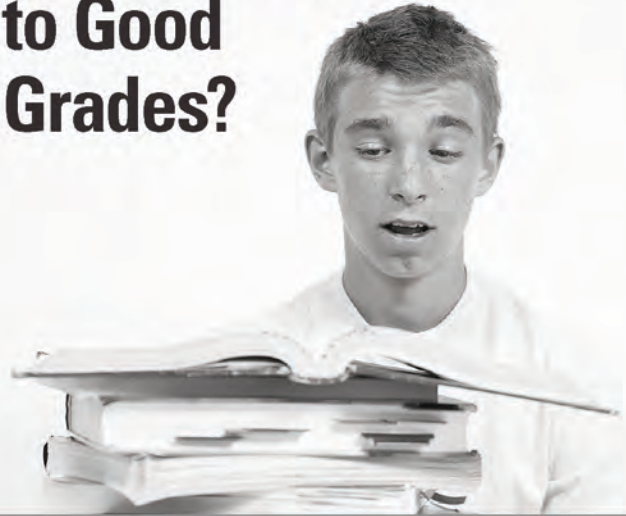


(215) 551-5254  
Queen Village

Hours by Appointment

Gift Certificates Available

## Is He Allergic to Good Grades?



Studies show that students with untreated allergies have significantly lower learning scores than their classmates without allergies.\*

Treat his allergies at  
**Allergy & Asthma Specialists<sup>SM</sup>**

Extraordinary in many ways:

- Fellowship-trained, Board Certified Allergists
- State of the art allergy skin testing
- Computerized pulmonary function testing
- The area's most trusted source for allergy extract
- High risk food allergies a specialty
- Aspirin allergy desensitization offered



- Blue Bell • Center City • Jenkintown • Pottstown
- King of Prussia • Lansdale • Doylestown • Colledgeville

**1-800-86COUGH**  
[www.AllergyandAsthmaWellness.com](http://www.AllergyandAsthmaWellness.com)

\*Source: American Academy of Allergy, Asthma and Immunology.



THE FOOD TRUST NEWS

# Apples Galore at the Fall Farmers' Market

Did you know that Pennsylvania is one of the top five apple-producing states in the U.S.? Thanks to The Food Trust, which organizes the weekly farmers' market in the Shambles, our neighborhood gets to sample more than its fair share of Pennsylvania-grown apples.

Three of the most sought-after orchards in the tri-state region — **Beechwood Orchards, North Star Orchard, and Three Springs Fruit Farm** — are Headhouse regulars, which means that Honeycrisp, Gala, Pink Lady and other sweet, juicy heritage apples are available on our doorstep throughout the season.

As summer draws to a close and parents start the annual back-to-school shop-fest, our thoughts turn to school lunches, and how best to use the market to create healthy lunch snacks for our little ones.

Since apples are in abundance at this time of year, we're celebrating fall's fruitfulness by featuring apple and fruit-themed lunch box ideas, including a kid-friendly favorite — the apple turnover.

Children love the bustle and energy of the Sunday market, particularly when they can sample the wares at many of the stalls. It's especially fun when parents can involve their children in selecting the fresh produce they will be consuming at school during the week.

"There's been much debate amongst foodies and dieticians about what we should be feeding our children. The latest guidelines from the USDA suggest that at least half of what we consume

should consist of fresh fruits and vegetables," says Katy Wich of the Food Trust. "We love to see the Sunday market packed with children and parents; it's a fun family outing and helps educate the next generation of consumers about the importance of eating good, locally-grown food."

For further healthy recipe ideas and details on all the Farmers' Markets operated by the Food Trust, see [thefoodtrust.org](http://thefoodtrust.org).



## HEALTHY LUNCH BOX IDEAS

- Spruce up sandwiches by visiting artisan bread stalls such as Ric's Breads and Wildflower Bakery for a rustic loaf, brioche mini rolls or sourdough sliced sandwich loaf.
- Experiment with the locally made preserves, jams, butters and jellies. Green Aisle Grocery is a great place to try natural and low-sugar versions of nut butters, including our favorite almond butter. Create an artisanal PBJ! Apple and Peach Butters are in season now; try these as a sandwich filling.
- The fall crop of sweet carrots hits the market around now. Check out Weavers Way and Blooming Glen. Slice carrots and apples into kid-friendly sticks.
- Cube organic cheese from one of the cheese vendors, such as Hillacres Pride, Birchrun Hills, or Shelbark Hollow. Add the cheese to one of the delicious cheese flatbreads from Ric's Breads.
- On colder days, why not include a mini-thermos of freshly made healthy soup from Good Spoon?

## MINI-APPLE TURNOVER RECIPE

It's even better to involve young ones in the food prep itself. This turnover recipe (courtesy of [www.allrecipes.com](http://www.allrecipes.com)) is a cinch!

- 2 tablespoons lemon juice
- 4 cups water
- 4 of your favorite seasonal apples, peeled, cored and sliced
- 2 tablespoons butter
- 1 cup brown sugar
- 1 teaspoon ground cinnamon
- 1 tablespoon cornstarch
- 1 tablespoon water
- 1 package frozen puff pastry sheets, thawed
- Optional Turnover Glaze:
  - 1 cup confectioners' sugar
  - 1 tablespoon milk

- 1 Combine the lemon juice and water in a bowl. Place the prepped apples in the water to prevent browning. Strain just before using.
- 2 Melt butter in a large frying pan and add apples. Stir for about 2 minutes, until they begin to soften. Add brown sugar and cinnamon, and cook, stirring, for 2 more minutes. Stir together cornstarch and 1 tablespoon water. Pour into the pan and mix well. Cook until apple mixture has thickened. Remove from heat and cool.
- 3 Preheat the oven to 400°F.
- 4 Unfold prepared puff pastry sheets and trim each sheet into a square. Then cut each larger square into 4 smaller squares.
- 5 Spoon apples onto the center of each square. Fold over from corner to corner into a triangle shape and press edges to seal.
- 6 Place turnovers on a baking sheet. Bake for 25 minutes — until turnovers are lightly browned.
- 7 Cool completely before glazing. To make glaze, mix together sugar and milk, and use a pastry brush to glaze the top of the turnovers.



**FRIENDS' CENTRAL SCHOOL**



**Discover the Magic!**

*All-School*  
**OPEN HOUSE**  
October 19  
2 pm

Walk-in Wednesday tours also available each week.  
Lower School tours depart at 9 am.  
Middle & Upper School tours depart at 8:30 am.

**610.645.5032**      **friendscentral.org**

# FOREMOST

**READY TO MOVE TO YOUR NEW OFFICE?**

*If you've been working from home, doesn't it make sense*

- to have a professional presence?
- to separate your work from your home life?
- to promote your entrepreneurial ventures?

**Starting at just \$400/month**  
*all utilities included.*

- Single office spaces or large suites (with or without waiting rooms).
- Great location, shared conference space.
- FOREMOST is close to everything! (and Starbucks is next door).

**The FOREMOST BUILDING**  
525 South Fourth Street, Philadelphia

Call Allison for details: 267.992.4495

SINCE 1982

**NATIONAL WATCH & DIAMOND**  
Visit our website at [NationalWatch.com](http://NationalWatch.com)





**PRE-OWNED ROLEX, CARTIER, BREITLING & MORE!**

**OVER 400 ROLEX IN STOCK**  
ROLEX REPAIR & REFINISHING - ONE YEAR WARRANTY  
WE BUY GOLD, SILVER & DIAMONDS

**(215)627-WATCH** 8th & Chestnut Streets  
Philadelphia, PA 19106

N.W.E. IS NOT AN OFFICIAL ROLEX JEWELER

ELIZABETH SCHMACKER'S  
**GARDEN ACCENTS**  
Your Trusted Source for Outdoor Art Since 1979






Over 5,000 Items from Around the World in our Gardens & Showroom



**Open Year Round**

4 Union Hill Road  
West Conshohocken, PA  
610.825.5525  
[www.gardenaccents.com](http://www.gardenaccents.com)

Tues - Sat 10 am - 5 pm  
Closed Sun & Mon



**BACK - TO - SCHOOL DONORS WANTED**

**S.O.S. From McCall School**

**M**ccall, our neighborhood’s elementary school at 325 South 7th Street, is scheduled to begin on September 8 and needs your help! Due to the district’s budgetary cuts, McCall’s has a very nominal budget for supplies such as textbooks and paper. In addition, many key programs like Playworks, a structured recess program that develops conflict resolution skills, are threatened with elimination. The Cybrary — a library with computer technology — has been recently been cut due to the budget constraints.

**If you are able to make a donation, please do.** Donations are tax-deductible and may be made in cash or check, payable to “McCall Home & School Association,” and sent to McCall Elementary School, ATTN: McCall Home & School Association/Laura Sepe, 325 South 7th Street, Philadelphia, PA 19106. Donations may also be made by credit card online at [meetingmccall.com/donate](http://meetingmccall.com/donate).

If you have some free time and want to work with children or in the office, please contact Laurel Landau at [president@meetingmccall.com](mailto:president@meetingmccall.com).

**McCall can receive a percentage of the sales from many of your favorite shopping places:**

- **eScrip:** Register your Superfresh (and other) grocery cards at [www.escrip.com](http://www.escrip.com).
- **Box Tops:** Clip and collect “Box Tops for Education” and “Labels for Education,” found on many common household brands.
- **Shoparoo:** Download the Shoparoo app onto your smartphone and simply scan your grocery receipts.
- **Target:** Register your Target Red card for “Take Charge of Education” and make sure that McCall (school ID 90640 on Target’s website) is selected.
- **Amazon:** Many Amazon purchases made through [smile.amazon.com](http://smile.amazon.com) are eligible for a percentage donation to McCall. Just make sure you select “McCall Home & School Association” as your charitable organization.



**McCall students welcome the new school year.**

**Tutor**

**Experienced Teacher  
Certified and Licensed in PA & NJ**

**Elementary and Secondary Subjects  
Spanish and Special Education  
Essay Writing - College Applications  
SAT Prep**

**Able to modify instructional  
practices to address a wide range of  
student learning challenges**

**Diane S. Stein, Ed.D.  
215-205-0319**

Local • Free delivery and shipping  
No more waiting for the mail  
Competitive pricing

Our exclusive ingredients  
and state-of-the-art equipment  
allow us to customize medicine  
for each individual patient.

We compound medicine for  
Bio Identical Hormone Replacement

- Veterinary • Dermatology
- Pain • Scar Removal
- Wound Care



Most commercial insurance accepted  
507 South 2nd Street  
[theartofmed.com](http://theartofmed.com)



OUT AND ABOUT

BY BONNIE HALDA

# Fun Fall Festivities



**Pumpkin Fall Festival is the South Street Headhouse District's annual celebration of autumn in all its glory. Last year hundreds of families enjoyed great entertainment and activities. The event this year, Saturday, October 25, promises to be bigger and better! See you underneath the Shambles, 2nd and Lombard Streets, from 12 to 5 p.m.**

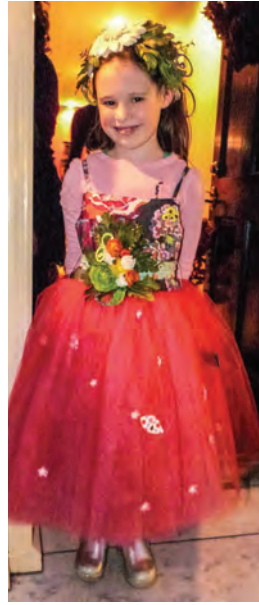
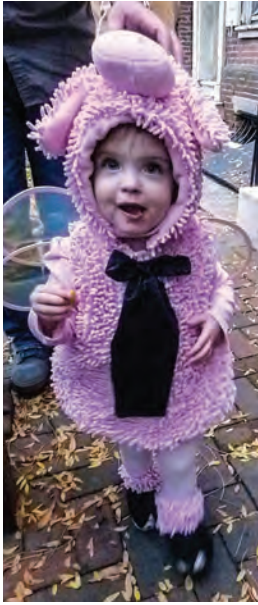
**Three Bears Park, 319 Delancey Street, hosts one of Society Hill's best holiday events every Halloween, beginning at 5 p.m. As you can see, Trick or Treaters had a blast last year!**



**Find treats for friends and family at Head House & Three Bears Park.**



OUT AND ABOUT



**Bonnie Halda** is a freelance photographer specializing in historic buildings and the urban environment. She's also a historical architect with the Northeast Regional Office of the National Park Service.



**AD Allan Domb**  
Philadelphia's Largest Luxury Condominium REALTOR®

1845 Walnut Street, Suite 2200  
Philadelphia, PA 19103  
215-545-1500  
www.allandomb.com

**Allan Domb  
Real Estate Presents**



**THE CADWALADER HOUSE**

240 SOUTH 4TH STREET

Opportunity to create an estate home in this historic mansion on 4th Street in Society Hill! Built in 1829, the home's namesake is Judge John Cadwalader, best known for his prestigious legal career including one term in the U.S. House of Representatives and serving as a United States District Court Judge for the Eastern Region of Pennsylvania. The residence is five floor plus basement and has potential for up to two covered and one uncovered parking spaces and a pool. 9,003 sf **\$2,950,000**

**THE SHIPPEN-  
WISTAR HOUSE**

238 SOUTH 4TH STREET

Opportunity to create an estate home in this historic mansion on the corner of 4th and Locust Streets in the heart of Society Hill! The house, built around 1750, was the former residence of Dr. Shippen and subsequently Dr. Wistar, two internationally known physicians in the late 1700's and early 1800's. The home has four floors plus a basement, a private garden and potential for up to three covered parking spaces and a pool. 4,670 sf **\$2,750,000**





PHILLY FOOD LOVERS

BY CLAIRE BATTEN

# A Spicy Newcomer

We thought to kill two birds with one stone (and all in one lunch). Hence we invited our favorite social media consultant, Jeff Gibbard, to lunch at **Kabobeesh**, the new Tandoori restaurant situated on 4th Street, in former Latest Dish space. On the menu: assorted kabobs and a discussion about social media apps for foodies.

Jeff is founder of truevoicemedia.com and writes a food blog, followfoodie.com. Like many other food-conscious individuals, he's on the popular Paleo diet, so Kabobeesh's meat-laden menu is right up his alley!

The original Kabobeesh, which claims to be the oldest Pakistani restaurant in Philadelphia, is located in West Philly (42nd and Chestnut Streets). The menu at both locations is the same: an array of beef, chicken and lamb marinated overnight in herbs, yogurt and spices. The kabobs are available solo or you can buy a meal, which includes a choice of vegetable sides such as chutney, spiced yogurt, lentils and vegetable curries. This hearty food is well priced — the tandoori chicken kabob comes in at \$8.50, a mango lassi beverage is just \$2.99 — and both portions are ample.

The eating experience is not for the dainty. You use your hands, as well as the naan wrap, to stabilize the delectable kabob. It's much like eating a Philly cheesesteak or a really good gyro — making a mess means you devoured your delicious meal enthusiastically. We made a huge mess, so you know it's good.

If kabobs are not your thing, have no worries. Kabobeesh's menu is packed with traditional Indian dishes such as chicken tikki masala,

samosas, curries and chana masala. Best of all, the restaurant can be found on the online delivery service, GrubHub. So, when pressed for time, go to [grubhub.com/philly/kabobeesh-4th-st](http://grubhub.com/philly/kabobeesh-4th-st) and have takeout delivered to your door. Other takeout options can be found at [kabobeesh.com/delivery](http://kabobeesh.com/delivery), or you can call 215-413-0881 with your order.

### An Entrée to Social Media Apps for Food Lovers

We took a poll around the lunch table and had an interesting discussion about which food-related social media apps have stayed the course and which have died a cyber-death.

Top votes went to **Foursquare**, which continues to hold sway in social circles and, according to Jeff, often anchors and provides reviews to other social media applications.

**Foodspotting**, which used to be my personal addiction, seems to have gone quiet, replaced by **Instagram**. According to Jeff, "More food pictures are posted on Instagram than any other type of photo. There's even an app to help you take pretty food pictures. It's called Vibrantly, and can be downloaded from the iTunes store." If you have an interest in taking photos that look like a Dutch Old Master still life, check it out.

Local food blogs, such as **Uwishunu.com** and **Foobooz.com**, continue to hold sway, because of the local knowledge they can provide.

### Kabobeesh

613 South 4th Street  
215-413-0881  
[kabobeesh.com](http://kabobeesh.com)  
Open daily, 12-11 p.m.



Claire Batten and Keri White are the dynamic duo behind Philly Food Lovers. They are business partners in KCC, a marketing consultancy and copywriting agency. For more of both of their writings on food, visit [phillyfoodlovers.com](http://phillyfoodlovers.com).

Creating harmony in body and mind

*Judy Moon*  
and Associates

CONVENIENT, RELAXING MASSAGE THERAPY  
Washington Square South  
in the Hopkinson House

ABMP Certified    267.671.0881    [www.judymoon.com](http://www.judymoon.com)

PHILADELPHIA  
WINDOWBOX COMPANY

phone 610-310-1973

[info@philadelphiawindowboxcompany.com](mailto:info@philadelphiawindowboxcompany.com)  
[www.philadelphiawindowboxcompany.com](http://www.philadelphiawindowboxcompany.com)

**AD Allan Domb**  
Philadelphia's Largest Luxury Condominium REALTOR®

1845 Walnut Street, Suite 2200  
Philadelphia, PA 19103  
215-545-1500  
www.allandomb.com

## Allan Domb Real Estate Presents Penn's Landing Square

313 S. 2ND STREET



### Beautifully Appointed One Bedroom Accessible on 2nd Street

One bedroom, one and a half bathroom with direct access from 2nd Street, a recently updated open kitchen, custom built-ins in the living room and bedroom, hardwood floors throughout and streaming natural light in all rooms. One parking space included. 915 sf  
**\$369,900**



## Allan Domb Real Estate Presents The Lippincott

227 S. 6TH STREET



### Totally Custom Two Bedroom Plus Den

Magnificent two bedroom plus den, two and a half bathroom featuring a balcony, 11' ceilings, walnut floors, exposed brick walls and exposed wood beams. The residence has an open floor plan with a Joanne Hudson designed kitchen, large living room and dining room, and a master suite with his-and-hers walk-in closets and spectacular bathroom. This condominium is one of a kind! 2189 sf  
**\$1,600,000**

### Two Bedroom Plus Den How Large?

Two bedroom plus den, three and a half bathroom overlooking Washington Square and offering southern exposure. The condominium has a Joanne Hudson kitchen, designer bathrooms, lavish master suite and wonderful entertaining and living space. 3510 sf  
**\$3,500,000**

**SOLD**  
**We can sell yours, too!**





ON OUR SHELF

BY RICHARD DE WYNGAERT

# Autumn's Bountiful Crop of New Reads

As the long, lazy days of summer recede into memory, those who love to read anticipate autumn and the luscious book selections with which publishers tempt us. This fall is characterized by a number of new works of fiction, some compelling biographies and memoirs, and many other terrific nonfiction selections. Here are a few of my favorites:

**Fiction**

**Edge of Eternity** by Ken Follett

The third installment of Follett's sweeping trilogy has been released finally. *Edge of Eternity*, preceded by *Fall of Giants* and *Winter of the World*, captures with keen insight and engaging characters the 1960's civil right movement, the often dark political maneuverings of the Kennedy/Nixon/Khrushchev/Brezhnev years and the new world order through President Obama's 2008 election speech. It's told through the eyes of five entwined families — American, Russian, German, English and Welsh. A must read!

**Lila** by Marilyn Robison

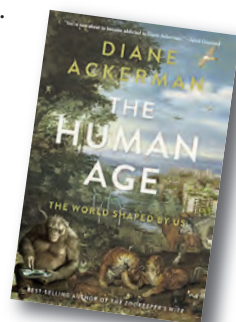
Robison has again written a truly magnificent novel. Building upon her two earlier books, *Gilead* and *Housekeeping*, both set in a small fictional town in Iowa, Robison quietly breathes magic and depth into the mysteries and forces that shape our existence. Beautiful — this is a 21st-century classic.

**Nonfiction**

**The Human Age: The World Shaped by Us**

by Diane Ackerman

Our current geologic epoch has been coined the Anthropocene by many scientists — a time when every aspect of the earth is directly and profoundly influenced by human endeavors that rival the great forces of nature. By our actions, we have changed and disrupted the way the world's ecosystems behave. Within the foreboding chaos we have created, distinguished naturalist and poet Diane Ackerman finds hope and promise rooted in our creativity and problem-solving capacity. Her writing is clear, direct and honest. She frames the possibility of a very different and perhaps more humane future in which we still matter.



**Fields of Blood** by Karen Armstrong

Karen Armstrong is an original, provocative thinker and the author of more than 20 books on the major religions and faiths of our world, including the bestselling *History of God*. She has written another book not to be missed. *Fields of Blood* examines the historical and contemporary roots, roles and connections of religion and violence. In her study, she also looks to the future, reflecting on the need for and likelihood of peace in the interplay of religion and politics.

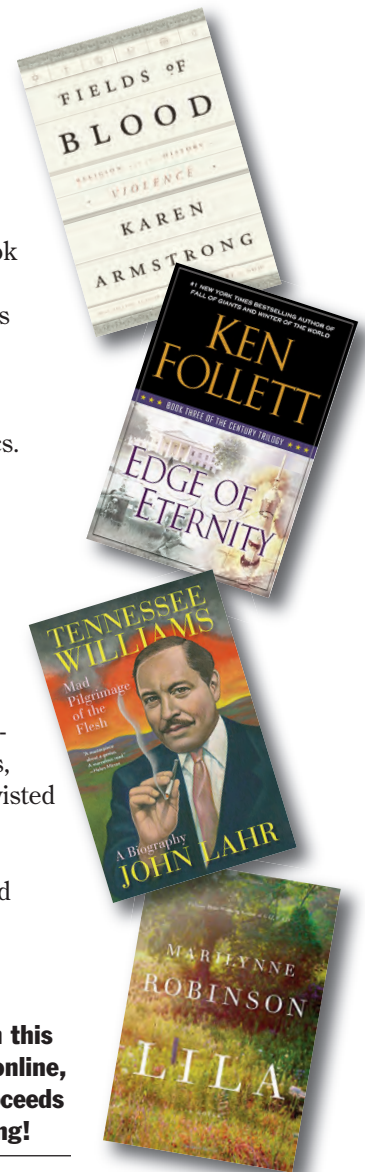
**Biography**

**Tennessee Williams: Mad Pilgrimage of the Flesh** by John Lahr

John Lahr, senior drama critic for *The New Yorker*, has crafted a superb biography not dissimilar in energy and spirit to Williams' often-tormented characters. This biography masterfully pieces together the many addictions, mental illnesses, moral shortcomings, failed relationships, charred dreams and twisted souls that define Williams's characters. In doing so, the book offers a portal into the existential challenges and forces that forged the psyche of, arguably, America's most celebrated playwright.

**Bring this article with you when you shop at Head House Books. If any book cited in this review is selected from stock or ordered online, present the article, and 50% of the net proceeds will be contributed to SHCA. Happy Reading!**

Richard De Wyngaert is the proprietor of Society Hill's only local, independently owned bookstore, Head House Books, 619 South 2nd Street.



**LIONESS ANTIQUES INC**  
JEWELERS since 1976

- Diamonds
- Engagement Rings
- Custom Designs
- Appraisals
- Repairs



520-A S. 2ND STREET  
Between Wawa & RiteAID 215.592.4099

**AD Allan Domb**  
Philadelphia's Largest Luxury Condominium REALTOR®

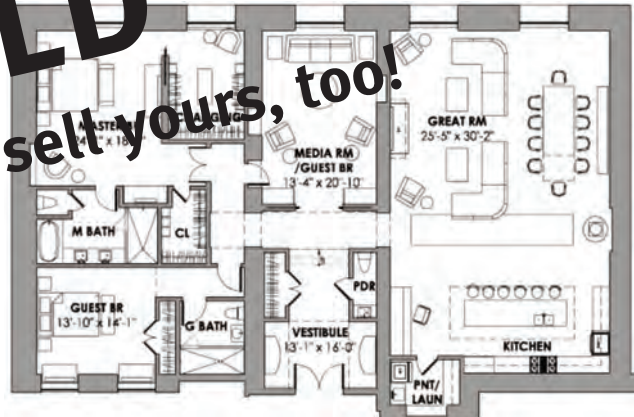
1845 Walnut Street, Suite 2200  
Philadelphia, PA 19103  
215-545-1500  
www.allandomb.com

## Allan Domb Real Estate Presents The Bank Building

421 CHESTNUT STREET

**Opportunity to Create a Custom Home  
Overlooking Independence Hall**

Raw space overlooking Independence Hall that offers the buyer a chance to build a custom home while incorporating original building details such as exposed brick and barrel ceilings. The residence has excellent natural light and can easily accommodate a large great room and two bedrooms plus a den. 3068 sf \$1,150,000



**SOLD**  
We can sell yours, too!

## Allan Domb Real Estate Presents



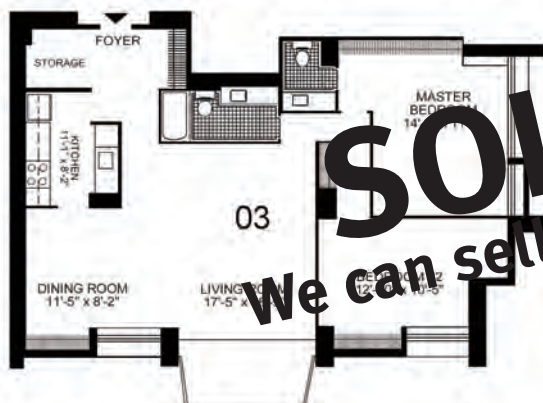
604 S. WASHINGTON SQUARE

**One Bedroom With Magnificent Views**

One bedroom on a high floor overlooking Washington Square featuring an updated kitchen built-in bar in the living room, amazing closet space and a private balcony boasting Square, city skyline and bridge views. 843 sf \$294,900



**SOLD**  
We can sell yours, too!



**Two Bedroom with Panoramic Southern Views**

Two bedrooms, one and a half bathroom on a high floor with dramatic southern views. The home has a generous open floor plan, a private balcony providing views of the river to the south and the skyline to the north, an updated kitchen and wood floors throughout. 1200 sf \$569,999

**SOLD**  
We can sell yours, too!





WELCOME BASKETS

BY MARTHA LEVINE

New in the Neighborhood?

If you are a new homeowner (condos included) in Society Hill as of 2013/14, SHCA wants to present you with a Welcome Basket. What is a Welcome Basket? It is a big, beautiful basket filled with fresh foods, valuable information and many gift certificates to area theaters, restaurants, shops, services and museums. The value of each basket is over \$650. Last year, we presented 40 baskets to delighted new homeowners, but we were not able to reach all of our new neighbors. We need your help to let us know

about you. If you are a new homeowner (sorry, no renters), we would love to set up an appointment for a basket presentation in your home. Please contact us at marthalev6@gmail.com or 215-629-0727.

Listed below are the wonderful, loyal local businesses and organizations contributing gift certificates that make our baskets possible. Please help us thank them by patronizing their establishments. We look forward to hearing from you.



2014 SOCIETY HILL WELCOME BASKET CONTRIBUTORS

**Coffee Shops**

Old City Coffee, 221 Church Street/Reading Terminal Market  
Starbucks Coffee Inc., 8th & Walnut Streets

**Food Stores**

SuperFresh, 5th & Pine Streets

**Restaurants**

Bistro Romano, 120 Lombard Street  
Bridget Foy's, 200 South Street  
City Tavern, 138 S. 2nd Street  
Creperie Beau Monde, 624 S. 6th Street  
Fork, 306 Market Street  
Garces Group – Amada, 217 Chestnut Street, and Rosa Blanca, 707 Chestnut Street  
High Street on Market, 308 Market Street  
La Buca Ristorante, 711 Locust Street  
Le Pain Quotidien, 801 Walnut Street  
Mustard Greens (Chinese), 622 S. 2nd Street  
Positano Coast Restaurant, 2nd & Walnut Streets  
Ristorante Panorama, 14 N. Front Street  
Serpico, 604 South Street  
Talula's Daily, café & take out, 208 W. Washington Square  
The Farm & Fisherman, 1120 Pine Street

**Specialty Foods**

Homemade Goodies by Roz, 510 S. 5th Street  
Cookies By Design, Society Hill Towers  
Metropolitan Bakery, 262 S. 19th Street, Rittenhouse Square  
South Street Bagels, 613 S. 3rd Street  
The Bagel Factory, 510 Walnut St, Penn Mutual Building

**Specialty Shops**

Adornamenti (jewelry), 1106 Pine Street  
Happily Ever After (toys), 1010 Pine Street  
Head House Books, 619 S. 2nd Street  
Industry (fashion accessories), 1020 Pine Street  
Kitchenette (cookware), 117 S. 12th Street  
Lolli Lolli (children's clothing/toys), 713 Walnut Street  
Paper On Pine (invitations/stationery), 115 S. 13th Street  
Show of Hands Gallery (crafts), 1006 Pine Street  
SOTA (Spirit of the Artist), 1022 Pine Street  
Yarnphoria (yarn and supplies), 1016 Pine Street

**Theaters/Entertainment**

Annenberg Center for the Performing Arts, 3680 Walnut Street  
Arden Theater, 40 N. 2nd Street  
Ballet X at Wilma Theater, 265 S. Broad Street  
1812 Productions (all comedy theater), 215-592-9560  
Ghost Tours of Philadelphia, 610-587-8308  
Historic Philadelphia Inc., SW corner 6th & Chestnut Sts.  
Independence Seaport Museum, 211 South Columbus Blvd.  
InterAct Theater Company, 2030 Sansom Street  
Lantern Theater Company, 10th & Ludlow Streets  
Lights of Liberty, featuring Liberty 360, 6th & Chestnut Sts.  
Museum of American Jewish History, 5th & Market Streets  
National Liberty Museum, 321 Chestnut Street  
Pennsylvania Ballet, Academy of Music, Broad & Locust Sts.  
Penn's Landing Playhouse @ the Seaport Museum, 211 S. Columbus Blvd.  
Philadelphia Chamber Music Society, 215-569-8080  
Philadelphia History Museum, 15 S. 7th Street  
Philadelphia Shakespeare Theatre, 2111 Sansom Street  
Philadelphia Society for the Preservation of Landmarks, 321 S. 4th Street  
Philadelphia Theatre Company, S. Roberts Theater, Broad & Pine Streets  
Piffaro, The Renaissance Band, 215-235-8469  
Society Hill Playhouse, 507 S. 8th Street  
The Chamber Orchestra of Philadelphia, Kimmel Center, 215-545-1739  
The Philadelphia Chamber Ensemble, Old Pine Church  
Wilma Theater, 265 S. Broad Street

**Other Services**

Judy Moon Massage Therapy, Hopkinson House, 604 Washington Square  
Liberty Tree & Landscape Management, 215-725-3637  
Petmoir, A Memoir of Your Pet, 215-803-0723  
Riff Cleaners, 314 S. 5th Street  
SCULPT—Personal Trainer, 215-803-0723  
The Worth Collection (women's fashions), 215-925-8813



The Physick and Powel Museum Houses are just two of the many local museums that contribute to the Welcome Baskets.

**AD Allan Domb**  
Philadelphia's Largest Luxury Condominium REALTOR®

1845 Walnut Street, Suite 2200  
Philadelphia, PA 19103  
215-545-1500  
www.allandomb.com

**Allan Domb Real Estate Presents  
St. James Court**

**Luxury Townhomes for Sale**



**Multi-level Townhome Condominium**

Multi-level townhome condominium featuring wood floors, lots of natural light, a large master suite, and balcony overlooking the community's pristine courtyard. 1602 sf  
**\$475,000**

**802 Pine Street**

Beautifully maintained 4 bedroom, 4.5 bath overlooking Pennsylvania Hospital with an open floor plan, finished basement, 2 car parking, 2 kitchens and 2 living rooms (can be converted to 2 units). 3000 sf  
**\$875,000**

**620 Pine Street**

Three story Washington Square townhome with 5 bedrooms and 4.5 baths, an open updated kitchen, finished basement, private rear patio and one deeded parking space. 2740 sf  
**\$850,000**

**Allan Domb Real Estate Presents**

**INDEPENDENCE PLACE**  
SOCIETY HILL · PHILADELPHIA

233 - 241 S. 6TH STREET



**Luxury Living around Washington Square**

Beautifully updated two bedroom, two bathroom with a private balcony and intimate southeast city views. The home features wood floors; an open renovated kitchen with wood cabinetry, stainless steel appliances and a large island; and two designer bathrooms with custom appointments. 1173 sf  
**\$499,900**



**One Bedroom with Alcove and Balcony**

One bedroom plus alcove, one and a half bathroom with a private balcony providing Washington Square and city skyline views. The residence has an open floor plan, perfect for entertaining. The bedroom has an updated ensuite bathroom and a walk-in and wall closet. 1118 sf  
**\$399,900**



**SALE PENDING**

**South-Facing One Bedroom with Balcony**

South-facing one bedroom with wonderful city views to the south and a large, private balcony. The residence has an open floor plan, completely renovated kitchen, hardwood floors, laundry room with washer and dryer and spacious bathroom. 928 sf  
**\$339,900**





**SOUTH STREET HEADHOUSE DISTRICT**

BY CLAIRE BATTEN

## Fashion Under the Shambles

The local fashion scene takes center stage under the Shambles, with runway shows featuring cutting-edge styles and innovative looks from local boutiques, designers and salons. The shows will feature both men's and women's fashions, and there will be plenty of opportunity to browse the collections.

Mike Harris, South Street Headhouse District's Executive Director, elaborates, "The District is evolving as a shopping destination, with Best of Philly Awards to Totem, Armour and P's and Q's. In addition, six District shops were mentioned on rackedphilly.com in the Ultimate Guide to Vintage Shopping. These were 1600 Below Vintage, Moon & Arrow, Nostalgia, Philly AIDS Thrift Shop, Retrospect and Wilbur Vintage. And we were recognized in the May issue of Philadelphia Magazine as a top neighborhood for shopping. So the September 23 event is a natural outgrowth of this exciting trend."

Elena Brennan, London-born owner of BUS STOP Shoe Boutique, which was recently voted best boutique in the country by Footwear Plus Magazine, is thrilled about the upcoming event. "I've been here for seven years, and I've seen lots of change for the better. The District just keeps improving and growing, and that is really exciting. Fashion Under the Shambles is an opportunity to share with Philly the District's fabulous local talent and boutiques. It's time

to share the love and reveal all the brilliant fashion right here on our doorstep."

Ellen Donato, co-owner of Urban Princess Boutique adds, "We are really looking forward to this event. It is a great opportunity to welcome our shoppers and to demonstrate the creativity and diversity of fashion in this area. There is such a collaborative spirit among the boutiques, and there is a lot of buzz surrounding the show."

Participating boutiques include: BUS STOP, Urban Princess, Philly AIDS Thrift, Nostalgia, Armour, Eyes Gallery, Pet Snobs, Crash Bang Boom and Helena Boutique. Hair and make-up services will be provided by Follicle Studio, Salon on 4th and Rocker Head, to name a few. The runway show starts at 7 p.m.

For additional information, visit [southstreet.com](http://southstreet.com) or call 215-413-3713.

**Tuesday,  
September 23  
6 to 9 p.m.  
Headhouse Square  
2nd & Lombard Streets**



### Other SSHD News

If you think South Street is looking a little more colorful, you're right. All of the light poles from Front to 11th Streets have been painted bright red. This is the first step in a comprehensive makeover which marks the rebranding of the District. Watch this space for news of future streetscape improvements!

**South Street  
Headhouse District**  
The Headhouse Shambles  
2nd and Pine Streets  
P.O. Box 63675  
Philadelphia, PA 19147  
Phone: 215-413-3713  
Cell: 267-216-6541

**THIRSTY?**

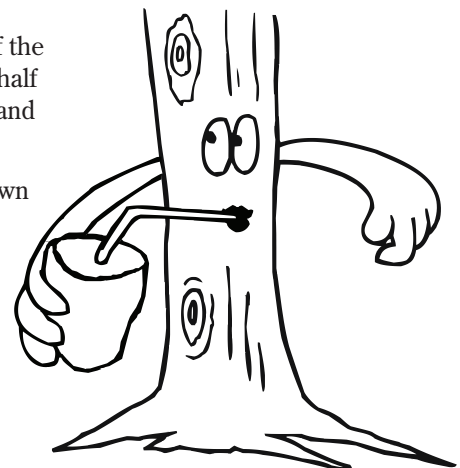
## Your Trees Need a Drink, Too!

Trees need to go into the winter well watered. Here are some important things to know:

- Water deeply, rather than frequently. Because most tree roots are found in the upper 18-24 inches of soil, this is the zone that should be saturated. Early morning is best.
- The amount of water that a tree needs can be affected by many factors, like soil and species. Also, newly planted trees need more moisture.
- Do not water directly adjacent to the trunk, as this can increase the risk of disease. Roots

extend far beyond the edge of the canopy, so water in the outer half of the area under the canopy and beyond its edge.

- Get creative and make your own slow-release watering device by drilling small holes in the bottom of a 5-gallon plastic bucket. You can fill it and walk away, as well as keep track of the 25 gallons of water most trees need each week going into winter.



STARTS SEPTEMBER 13

## Go DEEP This Fall!

### Delaware River Environmental Explorer Program (DEEP)

This autumn, the Delaware River Waterfront Corporation (DRWC) is sponsoring a **free** educational workshop for the general public focused on the environmental science, cultural history and redevelopment history surrounding the Delaware River in Center City and South Philadelphia. Parents and children with an interest in this subject are welcome.

DEEP is intended to sharpen the observation and exploring skills of participants through hands-on teaching of subjects such as ecology, urban planning, river history, river mechanics, wildlife and plants. The classroom will be the general vicinity of the river and land in the area between Pier 53 (Washington Avenue) and Pier 70 (behind Walmart).



The workshop instructor is **Scott Quitel J.D., M.B.A., Certified Arborist**, who has an extensive and diversified background that brings together ecology, arboriculture, law, business and urban planning.

**Topics are:**

- Introduction to the River and Its Properties
- The Bottom of the Watershed
- What's in the Water?
- River Archaeology and Geology
- The River and Its Birds, Fish and Other Critters
- The River and Humans
- Uplands and Wetlands
- Piers and Peninsulas
- Penn, Bacon and Urban Planning of the Area

Classes began on Saturday, September 13 (9:30 a.m. to 12:30 p.m.) and will continue on consecutive Saturdays at the same time through early November.

Each course registrant will receive an official shirt, hat, field journal, field bag and hand lens, as well as a Certificate of Participation presented at the Awards Banquet at the end of the program.

To register for DEEP or obtain more information, contact Scott Quitel at [quitel@landhealthinstitute.org](mailto:quitel@landhealthinstitute.org).

## Mark J. Bojanowski / TEAM MJB

Kurfiss Sotheby's International Realty  
The Finest Real Estate in the World!

Listed Properties

1631-33 Locust St, Philadelphia, PA	Retail / Office Space	\$4,199,000
1901 Walnut St 16A, Philadelphia, PA	4 Br / 4.5 Ba / 4,500 sq. ft.	\$2,499,000
237-47 S 18th St 18C, Philadelphia, PA	4 Br / 4.5 Ba / 3,000 sq. ft.	\$2,200,000
208-10 Rex Ave, Philadelphia, PA	9 Br / 5.2 Ba / 9,864 sq. ft.	\$1,750,000
524 Lombard St D, Philadelphia, PA	3 Br / 2.5 Ba / 1,536 sq. ft.	\$ 659,000

Recently Sold Properties

2040 Pine St, Philadelphia, PA	3 Br / 4 Ba / 3,402 sq. ft.	\$1,325,000
223 Pine St, Philadelphia, PA	3 Br / 3.5 Ba / 3,000 sq. ft.	\$ 860,000

Mark J Bojanowski 215.704.3994 [mjbo@kurfiss.com](mailto:mjbo@kurfiss.com)

226 West Rittenhouse Square, Suite 102  
Philadelphia, Pennsylvania 19103  
Phone: 215.735.2225 office



SATURDAY, SEPTEMBER 27

## Free Great Walking Tour of Philadelphia

For the fifth consecutive year, the Association of Philadelphia Tour Guides (APT) celebrates Philly and two hundred of its museums, cultural venues and historic sites in one 12-hour extravaganza!

You'll learn about Center City Philadelphia in four separate phases, starting with William Penn's original "Greene Countrie Towne" and moving to our sprawling, 21st-century metropolis. Those who have the stamina to complete the entire event will be lauded at a gala celebration featuring refreshments and special gift bags.

Choose any or all of the following options, each led by an APT certified guide.

**Old City Tour** starts at National Constitution Center, 525 Arch Street, 8 a.m.

**Society Hill Tour** starts at The Bourse, 5th Street entrance between Market and Chestnut Streets, 11 a.m.

**Mid-City Tour** starts at the rear of Independence Visitors Center, 6th and Market Streets, 2 p.m.

**Parkway Tour** starts in Center Courtyard of City Hall, Broad and Market Streets, 5 p.m.

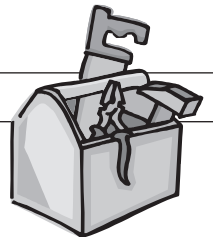
Participants are encouraged to wear comfortable clothing and walking shoes. Refreshments and rest rooms are available at each launch site. For more information, visit [phillyguides.org](http://phillyguides.org) or contact [info@phillyguides.org](mailto:info@phillyguides.org).

River to River,  
Pine to Vine,  
Rain or Shine

Saturday,  
September 27  
8 a.m. to 8 p.m.

Four tours,  
2½ hours each.

Free; registration  
suggested at  
[phillyguides.org](http://phillyguides.org).



### Oops!

It seems we forgot to give a "Toot!" last issue to the talented staff of writers, artists, advertising managers and delivery volunteers who produced a very successful Society Hill community paper, called the *Resident Newsletter*, every month for nine years, from 1981 through 1990. Thanks to Nancy Frenze for this clarification.

### Get a Perk for Supporting SHCA

Current SHCA members may request a 12-page Society Hill List of Contractors containing services such as general contracting, plumbing, electrical, exterior/interior painting and much more. These contractors have all been highly recommended by your neighbors. If you want a copy, the list will be mailed to you — sorry, not available online. This offer is for current 2014 members only. Contact us at [marthalev6@gmail.com](mailto:marthalev6@gmail.com) or 215-629-0727.



YOU'RE MAKING MOVES. LET US DO THE WORK.



We love Philadelphia.  
We know the neighborhoods.  
Whether you're buying, selling or just looking, we can help!  
For over 27 years, we've been honored to work with the best clients in the best city in the whole world.

Let's get started today.

Call us or visit our website. We can't wait to hear from you!

Mike McCann "The Real Estate Man" and The McCann Team

BERKSHIRE HATHAWAY  
HomeServices

Fox & Roach, REALTORS

Direct: 215.440.8345

[www.McCannTeam.com](http://www.McCannTeam.com)

Office: 215.627.6005

**Jan Stephano** ABR, CSR, CNE

*Lives, Knows,  
Sells Center City!*

43 years  
your neighbor  
26 years  
your realtor

Call me for  
all of your  
real estate  
needs.

215.922.3600 x219  
jstephano@plumerre.com  
www.janstephano.com



**Jan Stephano**  
215.922.3600 x219



**THE DAMON MICHELS TEAM**

*Specializing in The Main Line and Center City*



IF YOU ARE LOOKING  
TO BUY OR SELL CALL  
DAMON MICHELS  
cell: 610.731.9300  
office: 610.688.4310  
Damon@DamonMichels.com  
www.DamonMichels.com



THE WILLIAM PENN HOUSE  
1919 Chestnut Street  
Rittenhouse Square  
Efficiencies, 1, 2 and 3 Bedrooms

**BERKSHIRE  
HATHAWAY**  
HomeServices

OVER \$85 MILLION IN 2013 SALES! Fox & Roach, REALTORS®



CLAUDIA MCGILL 215.893.9920 claudia@elfantwissahickon.com

**Plumer &  
Associates, Inc.  
Realtors**

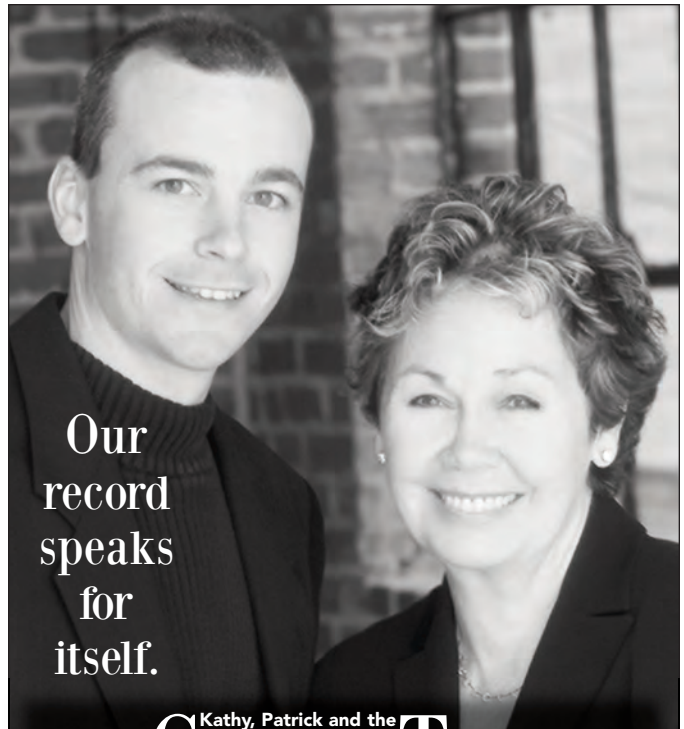
**Plumer**

Center City's largest  
independent Realtor.  
Serving Philadelphia since 1923.

**Residential,  
Commercial,  
and Investment  
Real Estate**

For a complete listing of Center City  
properties visit our website:  
www.plumerre.com

226 South Street, Philadelphia  
info@plumerre.com  
**215 922 4200**



Our  
record  
speaks  
for  
itself.

**Kathy, Patrick and the  
Conway Team**

**BERKSHIRE  
HATHAWAY**  
HomeServices  
Fox & Roach, REALTORS

conwayteam.com • kathy@conwayteam.com  
215-266-1537 • 215-627-6005



THURSDAY, OCTOBER 9

# Physick House Party

We are so fortunate to have two historic museum houses right here in our neighborhood: the Physick and Powel Houses. At this time, Physick House needs your support to help raise funds to restore its 50-year-old roof, which needs replacement in the near future. The cost is \$70,000.

To help raise funds, the Physick House will host the Second Annual Wine & Beer Tasting party for Society Hill neighbors on Thursday, October 9. Join in and have a great time meeting your neighbors and helping to raise money for the roof.

The selection of fine wines and crafted beer, plus sumptuous selected food pairings, will be a delight to all. There will also be live music and special activities. Last year, over 100 neighbors filled the house with merriment, and could not wait to do it again this year. Join us for a fun evening and support a good cause!

Tickets are \$30 in advance, \$35 at the door. To reserve, contact Jorga at Landmarks. Call 215-925-2251 and press 1 (admin), then 5 (Jorja). To purchase tickets online, go to [www.philalandmarks.org/Physickhouse](http://www.philalandmarks.org/Physickhouse).



## COMMUNITY CALENDAR

### Fall Fun in Philly



**Whether revelers don their Harry Potter-style glasses and broomsticks, or set out to watch ancient Chinese sea vessels race along the Schuylkill River, there's something to celebrate all season long in Philadelphia.**



*Sunday, September 14*  
**Mexican Independence Day Festival**  
 Great Plaza at Penn's Landing, Columbus Blvd. & Walnut Street. This free celebration features arts and crafts, Mexican rock bands, face painting, Mexican food, dancing and more.

*Sunday, September 21*  
**Garden Festival**  
 4747 South Broad Street. Pennsylvania Horticultural Society (PHS) presents its annual PHS Fall Garden Festival.

*Sunday October 5*  
**PumpkinFest**  
 Franklin Square, 6th & Race Streets. Guests of all ages partake in festivities such as a costume parade, pumpkin painting, pony rides, spooky mini-golf, carnival games, cupcake decorating and more.

*Sunday, October 5*  
**Philadelphia International Dragon Boat Festival**  
 More than 140 teams — totaling roughly 5,000 paddlers of all ages, abilities and ethnicities — take to the Schuylkill River in boats whose elaborate design originated in ancient China.

*Friday-Saturday, October 10-18*  
**DesignPhiladelphia**  
 This signature program of the Philadelphia Center for Architecture shines a spotlight on the region's vibrant creative community. This year's theme, EXPERIENCEdesign!, focuses on experiential and emotional aspects of design by engaging festival-goers' five senses. More than 120 events will be held in boutiques, museums, warehouses and public spaces across the city.

*Sunday, October 12*  
**Reading Terminal Market Harvest Festival**  
 A portion of Filbert Street will be closed to traffic and transformed into an urban farm, complete with hay bales and corn stalks. Kids and adults will be able to walk through an on-site pumpkin patch, ride an authentic farm tractor and enjoy freshly prepared donuts, candy apples and other seasonal goodies.

*Saturday-Sunday, October 18-19*  
**Harry Potter Weekend in Chestnut Hill**  
 For two magical days, Chestnut Hill transforms into Hogsmeade, the fictional town made famous in the Harry Potter series, for Harry Potter Weekend.



## Society Hill — Hot and Healthy!

*Friday, October 24, 2:30 p.m.*

### How to Combat Anxiety and Depression

The Athenaeum of Philadelphia, 219 South 6th Street

Dr. Sarah Mathews is an Assistant Professor of Psychiatry in the Department of Psychiatry at the Perelman School of Medicine at the University of Pennsylvania. She has a particular interest in issues related to the behavioral health of aging and aged women, including the management of cognitive disorders, depression and anxiety, and she is recognized as a North American Menopause Society Certified Menopause Practitioner (NCMP).

Free, but RSVP at 215-925-2688.

## EXERCISE & SOCIALIZE

Society Hill walkers will welcome the crisp days of autumn, perfect for picking up your stride! Consider joining one or both local groups for some walking and talking.

*Tuesdays and Thursdays, 8:15 a.m.*

**Walkie/Talkies** meet at Three Bears Park (Delancey Street between 2nd and 3rd Streets) for a one-hour stroll through our historic community. Anyone is welcome to participate in this non-stressful exercise and socialize program.

*Mondays, Wednesdays, and Fridays, 8 a.m.*

**Philly Is Walking In The Park!** meets at the fountain in the center of Washington Square (6th and Locust) for a half-hour, self-paced walk through our historic, beautiful park, led by neighbor Dr. Lisa Unger. All are invited to join us.





**SMART  
RESPONSIVE  
EXPERIENCED**

**Bari Shor  
Real Estate  
MatchMaker**

Whether you're selling or buying a home in amazing Center City, Bari Shor cares and *delivers* for you.

I am your neighbor, let me be your Realtor,<sup>®</sup> too!



**BERKSHIRE  
HATHAWAY**  
HomeServices

Fox & Roach, REALTORS<sup>®</sup>

215-790-5678  
Barishor@aol.com  
215-546-0550 x 5678

Top 6% of all Realtors in Prudential Network Nationwide  
Accredited Luxury Home Specialist  
Diamond Award

I am a professional, full-time real estate agent as well as your neighbor.

■ **PAMELA D. LAWS**

ABR, ALHS, SRES, ASP<sup>®</sup>



Like many of my clients, Society Hill is my home. I specialize in Center City because I love Philadelphia. Let me find the perfect townhome or condo for you!



**BERKSHIRE  
HATHAWAY** | Fox & Roach,  
HomeServices REALTORS<sup>®</sup>

215.790.5688 pam.laws@prufoxroach.com  
WWW.PHILADELPHIAPROPERTIES.NET

An independently owned and operated member of the Prudential Real Estate Affiliates, Inc.



**In Center City Real Estate  
there's one name one call**



**Izzy Sigman**

**New Listing!  
113-21 Bainbridge St**

Situated on several parcels of land sits this crown jewel, imposing, gracious, ideal for collectors & those who love to entertain. This most impressive residence offers 3-4 car garage & private outdoor space \$2,600,000



**Sold!**

**122 Delancey St**

Elegant historic Society Hill townhome, 3br, den, 2.5b, garden, original detail \$895,000



**Call Izzy Sigman**

**Plumer**

& Associates, Inc.  
Realtors

226 South Street

215-922-3600 x 228 Office  
215-806-6958 Mobile



**Hi Tech. Hi Touch.**

A Winning Combination —  
in Person and on the Web!



**Buying? Selling?**

Please call or email  
Rosemary Fluehr.

**Know someone who's  
Buying or Selling?**

Let me know. Referrals are  
the strength of my business.

**Rosemary Fluehr**

Associate Broker, GRI



**BERKSHIRE  
HATHAWAY**  
HomeServices

Fox & Roach, REALTORS<sup>®</sup>

215-440-8195 – Direct  
215-627-6005 – Office  
215-514-9884 – Cell

rosemary.fluehr@foxroach.com  
www.rosemaryfluehr.com  
530 Walnut Street, Suite 260  
Philadelphia, PA 19106



MEMBERSHIP NEWS

BY MATT DEJULIO

# 2014 Membership Nears 2013 Record

**Renew Now and Help Us Reach our Goal!**

By early August, 1,032 SHCA residents and businesses had already joined or renewed their membership, 32 short of the all-time high reached in 2013, but only slightly below the 2012 total of 1,036.

This year's 95 new members have helped give our membership rolls a big boost to keep us on par with last year.

Unfortunately, a rather high total of 111 members — up from 65 at the same time last year — have not yet renewed. If you are among them, we hope that you have not lost interest in your neighborhood! Your dues are critical to the survival of the only organization that can effectively represent you in dealings with the city.

Why is your membership so important? Besides providing funding for our many neighborhood improvement projects, such as graffiti control, weekly sidewalk cleaning and plantings in Washington Square, numbers speak volumes. When our board advocates on your behalf regarding zoning changes, real estate taxes, crime problems, ramp issues, trash receptacles, street lighting, bus re-routing, etc., it makes a greater impact if they can say they speak on behalf of the majority of residents. You are also guaranteed a personal invitation to each of our social events.

As a **special incentive** to all new members, we will provide a copy of the summary version of the Philadelphia Historical Commission's Register of Buildings in the Society Hill Historic District to those who join at the \$100 Federal Friend level or above.

Protect your neighborhood and your real estate investment. Sign up today!

Email Mattdejulio@aol.com if you have any questions or wish to comment on why you are not a member or have not renewed. All comments will be shared with the board, which is representative of every quadrant in our unique, historic neighborhood.

Matt DeJulio is a retired publishing executive. He has served SHCA as its administrator since 2001.



**SOCIETY HILL  
CIVIC ASSOCIATION**

Membership  
Application

Name \_\_\_\_\_

Address \_\_\_\_\_ Apt. # \_\_\_\_\_

City, State, Zip \_\_\_\_\_

Home Phone \_\_\_\_\_

Work Phone \_\_\_\_\_

Email  
(print clearly) \_\_\_\_\_

IMPORTANT: Today, most everyone communicates via email. Please be sure that we have your current email address — so that you can receive important updates between publication of our community newsletter. All SHCA emails will be judiciously screened, and rarely will we send emails more than once a week. Nor will we share your email address with anyone else. This convenient, 21st-century system helps save our civic association postage costs, while keeping you regularly informed.

**Residential Memberships**

- \$ 50 Basic Household Membership
- \$ 40 Senior/Student/Single
- \$ 100 Federal Friend
- \$ 150 Georgian Grantor
- \$ 300 Jefferson Benefactor
- \$ 500 Washington Benefactor
- \$ 1,000 Benjamin Franklin Benefactor

**Business Memberships**

- \$ 100 Institutions — 5+ employees
- \$ 60 Institutions — fewer than 5 employees

**Additional Contributions**

\$ \_\_\_\_\_ Washington Square Beautification      \$ \_\_\_\_\_ Franklin Lights  
 \$ \_\_\_\_\_ Sidewalk Cleaning/Graffiti Removal      \$ \_\_\_\_\_ Tree Tenders  
 \$ \_\_\_\_\_ Zoning and Historic Preservation      \$ \_\_\_\_\_ McCall School

Total Enclosed \$ \_\_\_\_\_

Charge VISA/MasterCard:

Number \_\_\_\_\_ Exp Date \_\_\_\_\_

Signature \_\_\_\_\_

The following topics are of special interest to me. I welcome receipt of email updates on these topics.

- Clean-Up Day       Washington Square       Zoning & Historic Preservation
- Franklin Lights       Social Events       Fundraising
- Dilworth House       Property Taxes       Local Crime
- Reporter       Casino Issues       Incidents & Alerts

Please return completed application to:  
**Society Hill Civic Association**, P.O. Box 63503, Philadelphia, PA 19147

## NIFTY NEIGHBORS IN MY OWN BACKYARD

BY JANE BIBERMAN

## Victoria Steiger and Laurie Olin

### *A Designing Couple*

Sitting in their airy home on Washington Square, Laurie Olin and Victoria Steiger admire the row of Bradford pear trees outside the bank of windows on the south side of their apartment. “They are good for the spirit,” says Victoria. As landscape architects, they appreciate living amidst greenery and have dedicated their careers to planning systems of public space and urban infrastructure, while preserving and restoring natural resources. Their new home, since 2010, is a stone’s throw from Independence Mall, which Laurie’s firm redid.

“We’ve lived all over Philadelphia,” says Victoria, who met Laurie when she was a student at Penn and later worked one summer in his office.

“When we were first married, we lived in a tiny apartment near Rittenhouse Square,” she reminisces. “Then we moved to a terrific loft in Old City and then to a house on a tree-lined street in West Philadelphia, where we raised our son.” Laurie, who has a daughter by an earlier marriage, continues: “Finally, we moved back into the city, which had changed dramatically and for the better. Now we are happily ensconced in the Lippincott Building, a three-minute walk from my office in the Public Ledger Building.”

Considered one of the foremost landscape architects in the world, Laurie became famous when he transformed Manhattan’s drug-ridden Bryant Park into a popular city destination, one of the most dramatic illustrations of urban renewal in the country. Closer to home, his handiwork can be found at the aforementioned Independence Mall, the new Barnes Foundation, the Philadelphia Museum of Art, the rehab of the Rodin and the Penn campus, where he has taught for the past 40 years.

Victoria has designed a number of public and private gardens in the city. Among her favorites are a redesign of the Azalea Garden on Kelly Drive and the bosquet of trees and sparkling fountain of Louis I. Kahn Park. “We collaborated only once — on a friend’s garden in Santa Fe — which is probably why we are still together,” she jokes.

Although they have lived for short periods in Rome and Boston, the latter when Laurie took a four-year hiatus from Penn to teach at Harvard, Victoria says, “We both love Philadelphia, particularly Washington Square and Society Hill. I just blundered onto this apartment. It’s not much larger than 1,600 square feet, but we find it more than adequate for drawing, writing and living.” (Laurie drew the couple’s portrait shown above.)

They walk everywhere. “I don’t drive since I discovered years ago that I am accident-prone behind the wheel,”



admits Laurie. “It’s calmer here than around Rittenhouse Square, and we’re always taking different routes to Headhouse Farmers Market, the Race Street Pier, the movies, pop-up parks and the river.”

Last year, wearing one of his signature bow ties, Laurie joined other recipients — including Renee Fleming, Herb Alpert, Ellsworth Kelly, George Lucas and Elaine May — to receive the 2012 National Medal of Art presented by President Barack Obama at a White House ceremony. In 2013, he also received the Thomas Jefferson Medal in Architecture, and this April, he was made a Fellow of the Athenaeum at a celebration of its 200th anniversary. Accepting, he said,

“It is appropriate for the Athenaeum to acknowledge a field such as mine, considering the beginning of our city was developed by Thomas Holme for William Penn’s ‘Green Country Town,’ a plan famous for its original squares located so as to provide equal amenity to each quadrant of the community and for its handsome tree-lined streets.”

He particularly acknowledged the contribution of Ed Bacon, with whom he had his quarrels. “[Ed’s] greatest and lasting legacy is the redevelopment and renewal of Society Hill, which consists of a truly innovative combination of measures that included demolition and high-rise development... pedestrian lanes, pocket parks and extensive planting, along with simple and durable handsome public construction all done in coordination with an ambitious, pioneering National Historic Park... The diversity of architecture and spaces is truly a demonstration of urban design at its best.”

Laurie looks forward to Philadelphia’s continued revitalization. “Architecture isn’t a bell jar, history isn’t over,” he explains. “Cities grow and change continuously.”

With a new generation of talented architects and landscape architects working here, Laurie is optimistic about the future of Philadelphia neighborhoods and the Schuylkill and Delaware waterfronts. He says, “Landscape architects today are engaged in making cities attractive and vital places to live and helping people take pleasure in living close together. It’s the only way we’re going to save our agricultural land... and stop the needless sprawl of cities.”

Victoria doesn’t plan to move again. “We’ve found the perfect home in the perfect neighborhood of the city we love,” she says.

Jane Biberman, former editor of *Inside Magazine*, is a freelance writer who has contributed to a variety of publications.





THE ATACAN GROUP AT KELLER WILLIAMS SOCIETY HILL GRAND OPENING PARTY—MAY 29, 2014

— WASHINGTON SQUARE —  
 LUXURY CONDO SPECIALISTS  
 THE ATACAN GROUP

Over 90% of buyers utilize the internet during their home search.  
 From social media engagement to 100s of real estate search engines  
 we will maximize digital exposure & profitability.

THE AYRE / LIPPINCOTT / INDEPENDENCE PLACE / HOPKINSON HOUSE / 200 WEST

 The Atacan Group

[www.CenterCityRealEstate.com](http://www.CenterCityRealEstate.com)

CENTER CITY'S LOCAL SOURCE FOR REAL ESTATE

**kw**  
 KELLERWILLIAMS.  
 Center City • Fishtown • Society Hill

**DIRECT:** 215-592-9522  
**BROKERS:** 215-627-3500



**COME VISIT US AT OUR NEW LOCATION:**  
 604 S. Washington Sq. / Hopkinson House / Philadelphia



**BANK LOCAL™**

Philly's most advanced neighborhood bank.™

With Go Anywhere Checking, banking has never been easier.

**East River Bank**

Member FDIC

**EAST FALLS | ROXBOROUGH | OLD CITY** **EastRiverBank.com**


**AD Allan Domb**  
Philadelphia's Largest Luxury Condominium REALTOR®

1845 Walnut Street, Suite 2200  
Philadelphia, PA 19103  
215-545-1500  
www.allandomb.com

**Allan Domb Real Estate Presents**

**SOCIETY HILL TOWERS**  
THE CONDOMINIUM

200-220 LOCUST STREET



**Some of our recent sales:**

2H NORTH	10F NORTH	19C WEST
5C WEST	11BCD WEST	19F WEST
5E WEST	11E WEST	22DE SOUTH
5F NORTH	11G WEST	23G SOUTH
5G WEST	12G WEST	24EF SOUTH
6BC SOUTH	14C SOUTH	24G NORTH
6D NORTH	15A WEST	25BC SOUTH
7B NORTH	17G WEST	28E SOUTH
8B NORTH	17H SOUTH	28GH NORTH
8G NORTH	18E NORTH	30H NORTH

**Sun-soaked Two Bedroom with Treetop City Views**

Two bedroom, two bathroom residence with floor-to-ceiling windows in all rooms offering magnificent city skyline views to the west and intimate views of Society Hill and the Ben Franklin Bridge to the north. The home has an updated kitchen, wood floors and great closet space. 1183 sf  
**\$469,900**