

SOCIETY HILL

# Reporter

www.societyhillcivic.org

## Connecting with the Resiliency of Nature



**Scott Quitel,**  
Founder of Land  
Health Institute

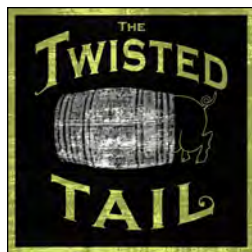
The Society Hill Civic Association (SHCA) is pleased to invite the community to a thought-provoking evening on Wednesday, November 19. Scott Quitel, founder of Land Health Institute, will address our General Membership Meeting on connecting with the resiliency of nature in the city.

Scott Quitel, JD, MBA, Certified Arborist, has a diverse background that combines environmental education, ecology, design, planning, liberal arts, law and business. He led the design efforts for the recently opened Washington Avenue Pier — the transformation of the decaying former Immigration Pier of Philadelphia into a natural and historic park upon the Delaware.

The ecological health of our land is in peril. Not only have many species become threatened, endangered or extinct, so have various types of

natural habitat. However, just as human ingenuity and zest for ever-improving quality of life inadvertently brought about ecological crisis, those same traits can serve to reverse the downward trajectory. Counterintuitive as it may seem, an ideal place to spark tangible improvement is within the city itself. Scott will discuss how urban dwellers can be real agents of beneficial environmental change, and enjoy their connection with nature in the process.

The meeting will take place at 7:30 p.m. in the Zubrow Auditorium on the first floor of Pennsylvania Hospital inside the main entrance at 8th Street near Spruce. All neighbors are invited to attend. Prior to the General Meeting, we will hold our monthly Board Meeting at the Hospital's Great Court Conference Room. Current SHCA members are welcome to attend.



## It's Party Time!

Mark your calendars for Tuesday, December 9, from 6 to 7:30 p.m. SHCA members are invited to the Twisted Tail, 509 S. 2nd Street, second floor, to kick off the holiday season in the good company of friends and neighbors. A cover charge of \$25 per member provides hors d'oeuvres and cash bar at Happy Hour prices.

Please RSVP by sending a check made out to SHCA to Matt DeJulio, SHCA Administrator, P.O. Box 63503, Philadelphia, PA 19147, by December 1. Society Hill residents who are not members are most welcome to join us and meet their neighbors — just sign up for SHCA membership at \$50 per household plus \$25 per person cover charge.

**WEDNESDAY**  
November  
**19**

### MARK YOUR CALENDAR

Society Hill Civic Association Meetings  
Wednesday, November 19, 2014

**Pennsylvania Hospital  
8th & Spruce Streets**

**6:00 p.m. Board of Directors Meeting**  
Pennsylvania Great Court Conference Room  
All SHCA members are welcome.

**7:30 p.m. General Membership Meeting**  
Pennsylvania Hospital Zubrow Auditorium  
All neighborhood residents are invited to attend.

**Speaker:** Scott Quitel, Founder of Land Health Institute  
**Topic:** Connecting with the Resiliency of Nature





SOCIETY HILL

*Reporter*



**Managing Editor**  
Sandra Rothman

**Columnists**  
Marilyn Appel  
Claire Batten  
Jane Biberman  
Diana Burgwyn  
Robert Curley  
Matt DeJulio  
Chuck Groshong  
Danielle Groshong-  
Keperling  
Martha Levine  
Jim Murphy  
Richard De Wyngaert

**Contributors**  
Karri Sensenig  
Katy Wich

**Photographer**  
Bonnie Halda

**Graphic Design**  
judy@parallel-design.com

**Press Release Liaison**  
c/o Matt DeJulio  
mattdejulio@aol.com

**Advertising Manager**  
Lenore Hardy  
Hardy@drexel.edu

**Submission Deadlines**  
January/February Issue  
Advertising:  
December 1  
Editorial:  
December 1

**Society Hill  
Civic Association**  
P. O. Box 63503  
Philadelphia, PA 19147  
Tel. 215-629-1288

**Website**  
Find past issues of the  
*Reporter* with color photos  
at [www.societyhillcivic.org](http://www.societyhillcivic.org).

**Submissions**

We want to hear from you. Our goal is to print news of interest to Society Hillers – happenings in and around our community for residents, businesses and professionals. Direct your editorial submissions and/or queries to Sandra Rothman by phone at 717-715-5791 or email [sandra.rothman@aol.com](mailto:sandra.rothman@aol.com). To publicize an event, submit all press releases directly.

Materials must be submitted in writing – via mail or email – and must include the name of a contact person. Edited submissions will be considered for publication if the subject matter is community related and if space allows. Otherwise, upcoming events of interest may be listed in the Community Calendar. Letters to the Editor will be considered for publication only if signed and the writer provides contact information.

**SHCA Board Officers and Directors**

**President**  
Robert Curley

**First Vice President**  
Jim Moss

**Second Vice President**  
Martha Levine

**Recording Secretary**  
Marlene Molinoff

**Treasurer**  
Marc Feldman

**Directors-at-Large**  
George Dowdall,  
Diane Harrison,  
Bill Landy, Sissie Lipton,  
Fred Manfred, Mary Purcell,  
Vijay Verma, Kim Williams

**Northeast Quadrant**  
2015 Heather Steiner  
2016 Lisa Unger  
2017 George Kelley

**Northwest Quadrant**  
2015 Mary Tracy  
2016 Amy DeMarco  
2017 Norman Lieberman

**Southeast Quadrant**  
2015 Laura Temple  
2016 Jeff Berry  
2017 Barbara Gelman

**Southwest Quadrant**  
2015 Marilyn Appel  
2016 Daniel Horowitz  
2017 Joan Kleinbard



 [designgroupllc.com](http://designgroupllc.com)

267.872.8814

**parallel**  
*design*

**Find our designs online.**

**BeyondTheLibertyBell.org**  
**Parallel-Design.com**

215-476-4040

Logos  
Websites  
Banners  
Books  
Brochures  
Invitations

Newsletters  
The Award-Winning  
Society Hill  
*Reporter!*

# Bulletin Board

*Snapshots of the people who make SHCA work.*



**Marlene S. Molinoff** moved to Society Hill with her husband, Perry, in December 2003. During the first few years of her residency here, she commuted to New York to continue her career as a pharmaceutical

copywriter, creative strategist and marketer. More recently, she served as a consultant to several local healthcare marketing groups. During the past few years, she has been writing short fiction. A number of her stories have appeared in national publications.

An enthusiastic traveler/photographer, Marlene has most recently visited Bhutan, Cambodia and the Galapagos. She serves on the Board of Directors of the Wilma Theater and is happy for the opportunity to serve the SHCA as its recording secretary.

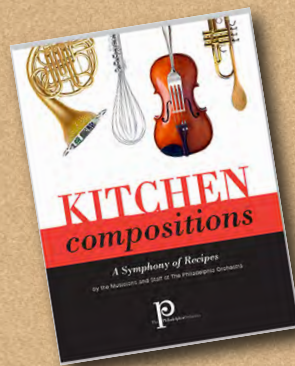
## The Tomb of the Unknown Soldier

The Tomb of the Unknown Soldier of the American Revolution in Washington Square has been handsomely renovated, thanks to the generosity of Suzanne and Norman Cohen, along with their family. The Square has gotten more beautiful and more colorful over the last several years, due to the hard work of members of SHCA, which is spearheaded by board member **Sissie Lipton**. Proceeds

of the Washington Square Affairs, as well as dedicated monies from association membership dues and gifts from caring neighbors, have funded this transformation. The next large project is the repair and restoration of the historic fountain in the center of the Square. Work for this has begun and is scheduled to be finished by spring.



**The Society Hill Civic Association is fortunate to recruit talented, hard-working neighbors who love our community and work hard to make it even better. Consider adding your time and talents to an SHCA committee. You'll meet interesting people and make meaningful contributions to Society Hill, one of America's premier neighborhoods. Find a list of all of SHCA's committees at [www.societyhillcivic.org](http://www.societyhillcivic.org).**



## Unique Holiday Gift

### **Kitchen Compositions**

Every recipe in this beautifully illustrated book comes from Philadelphia Orchestra musicians. All were tested in the kitchen of its editor, **Marilyn Appel**, who serves on the SHCA board.

Available at 414 Spruce Street, call 215-922-2626. All proceeds benefit the Philadelphia Orchestra.

## In This Issue...

**Page 7**  
Get Out Your Rakes!  
Fall Clean-Up Day

**Page 11**  
This Old House  
Demolition by Neglect

**Page 13**  
Exploring the City: Penna.  
Academy of the Fine Arts

**Page 16**  
Out and About: Philly Gets  
Healthier...Step by Step!

**Page 21**  
Philly Food Lovers: Spitalieri's  
Authentic Italian Fare

**Page 25**  
On Our Shelf  
Holiday Gift Suggestions

**Page 29**  
2015 Membership Drive  
Local Restaurants Offer  
Incentives

**Page 30**  
An Artist's Wife Reflects



**A·R·E·A**  
interiordesign

for a complimentary consultation  
please contact mark randall  
cr8ivmark@verizon.net

620 christian street  
philadelphia pennsylvania 19147  
215 336 4770

*"There are things known and things unknown  
and in between are the doors."*  
— Jim Morrison (1943 - 1971)



FALL 2014  
NOVEMBER 1-16

PHILADELPHIA  
JEWISH  
FILM  
FEST

pjff.org | 215-545-4400



A Program of  
THE GERSHMAN

P R E S I D E N T ' S M E S S A G E

# Ready, Set, Rake!

*Get involved with neighborhood cleanup on November 15*

When my wife and I first moved to Society Hill in 2005, my first contact with the Society Hill Civic Association came from working with neighbors who were actively removing graffiti and planning the spring and fall Clean-Up Days. Wally Wing, the long-term chairperson of the Clean-Up Day Committee, welcomed me to his committee. Wally is still active; you will find him outside the Superfresh on the morning of November 15, handing out brooms and paper bags to anyone who needs them.

Clean-Up Day is an opportunity not only to spruce up the neighborhood, but to meet and greet others who share the idea that we are all in this together. A beautiful neighborhood reflects the values and participation of all its members — churches, schools, restaurants, hotels and, most of all, neighbors who are the “boots on the ground” every day. This year, I am pleased to announce that the Monaco Hotel reached out and volunteered to make some of its staff available to help out on November 15.

Other businesses and institutions are encouraged to follow this civic engagement. I suggest that we, as a community, expand the practice of Clean-up Day beyond its twice yearly schedule. I encourage all neighborhood residents to go the extra mile on a daily basis: pick up litter, also remember to clean and weed tree pits and sidewalk bricks. And sweep leaves and debris from the front of properties — especially important if homeowners tend to use a rear entrance.


This year everyone also has an opportunity to help plant trees in the neighborhood in association with the Tree Tenders committee on November 15. This community-based street beautification effort pays off: it enhances the quality of life for all residents, is part of what makes our cohesive, historic neighborhood special, and maintains and increases property values.

Mark your calendars! Looking forward to seeing everyone out on the streets on November 15. And on behalf of our Civic Association, I wish all residents a happy winter holiday season!



**Robert Curley,**  
**SHCA President**

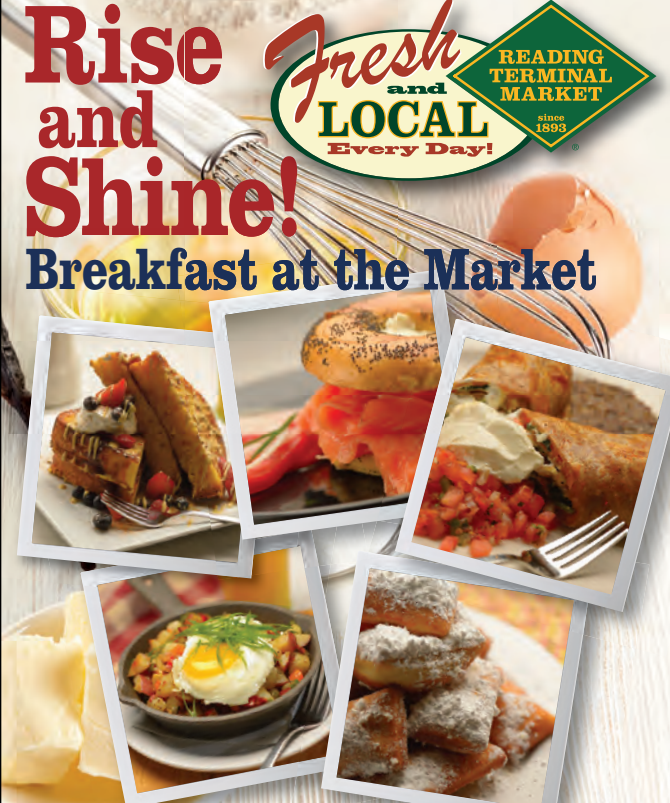
**Bob Curley** has been a board member for six years, where he co-coordinated Clean-Up Day and participated with Tree Tenders. He is a partner in the law firm of O'Donoghue & O'Donoghue LLP.



*All of Shakespeare's comedies contain a song except for one. Do you know which?*

Open Houses PK to 12  
November 11, 8:45 - 11 a.m.  
December 2, 8:45 - 11 a.m.

**FRIENDS SELECT SCHOOL**  
The Center City Quaker School that Sparks Fascination  
[friends-select.org](http://friends-select.org)



**Rise and Shine!**  
**Breakfast at the Market**

*Fresh and LOCAL Every Day!*  
READING TERMINAL MARKET since 1893

**READING TERMINAL MARKET**  
MON-SAT 8-6 & SUN 9-5 • \$4/2HR PARKING • 12TH & ARCH STREETS • 215-922-2317  
[www.readingterminalmarket.org](http://www.readingterminalmarket.org)

Thinking of Renovating your Kitchen or Bath...



**TEKNIKA**  
DESIGN GROUP  
Kitchens — Baths — Custom Cabinetry

215-922-4414  
teknikadesigngroup.com  
225 Race Street  
Philadelphia, PA 19106

Receive a gift at your initial consultation when you mention this ad!

**FOREMOST**

READY TO MOVE TO YOUR **NEW** OFFICE?

*If you've been working from home, doesn't it make sense*

- to have a professional presence?
- to separate your work from your home life?
- to promote your entrepreneurial ventures?

**Starting at just \$400/month**  
*all utilities included.*

- Single office spaces or large suites (with or without waiting rooms).
- Great location, shared conference space.
- FOREMOST is close to everything! (and Starbucks is next door).

**The FOREMOST BUILDING**  
525 South Fourth Street, Philadelphia

Call Allison for details: 267.992.4495



**O.C.I. TREE & LANDSCAPE**

Contact me today for a free estimate or to discuss future projects:

Paul Morano  
office 267-712-9624  
pjmtree@gmail.com

[www.OCItreeandlandscape.com](http://www.OCItreeandlandscape.com)

We accept all major credit cards.



**NEED TREEWOR, LANDSCAPING, OR MASONRY?**

We do it all. Our specialized crews include some of the top individuals in the industry.

- Outer crown reduction techniques to keep trees and shrubs perfect size
- Removing the largest of trees in the tightest of spaces
- Educated in the etiquette of transporting debris through your house
- Insect/disease control & fertilization
- Designers and Builders to create and install your ideal outdoor living space
- Brick and Stone Specialists to restore the old or construct the new
- Stone, brick, pavers and wood patio and sidewalk options
- Design, Fabrication and Installation of decorative Ironwork
- Rapidly becoming Philadelphia's favorite iron tree pit fence company

SATURDAY, NOVEMBER 15

# Fall Clean-Up Day

Put on your work clothes and strike a rakish pose! It's time to get our community ready for winter. Last year's ice and snow taught us how treacherously dangerous accumulated leaves and litter are, as we navigate brick sidewalks and cobblestone streets.

This year, sweeper trucks will be on the streets on Friday evening, November 14, to pre-clean before cars are moved to the alternate side. On Saturday, November 15, we ask you to be a good citizen and sweep around your house and on your block. Remember to get those gutters cleared, as well as nearby walkways and alleys, before the city's sweeper trucks come back sometime between 8 a.m. and noon. Consider stepping up to the plate if you notice your neighbor is away or a rental property needs a little TLC. And let's not forget Three Bears Park! It's worth noting that, because of budget cuts, SHCA is picking up the bill for the sweeper trucks this year, as well as for the paper shredding service.

Trash bags will be available — handed out by SHCA's Clean-Up Day volunteers — at the S. 5th Street Superfresh, from 8 a.m. until 1 p.m. Your bagged leaves and street litter, but no household

trash, should be left by noon at intersections on Locust, Spruce, Pine, or Lombard Streets, where they cross the numbered streets.

Wherever posted, cars must be moved to the opposite side of the street after 6 p.m. on Friday night, or they could be ticketed on Saturday morning beginning at 8 a.m. Please note that to accommodate Saturday synagogue services, the 300, 400 and 500 blocks of both Spruce and Lombard Streets will be swept by 8:30 a.m. — leaving the south side of these streets available for congregants to park their cars.

All streets will be swept from Front to 8th and from Walnut to Lombard Streets, not including Walnut Street. There will be no parking on either side of the 300 and 400 blocks of Front Street or the 200 and 300 blocks of 2nd Street and Lawrence Court. Although "Other Side Parking" signs will generally read "from 6 p.m. Friday until 3 p.m. Saturday," Society Hill's Block Coordinators are encouraged to remove these signs as near to 1 p.m. as possible — in order to permit cars to be moved back to their usual side of the street between 1 p.m. and 3 p.m. and prevent those cars from getting ticketed.

A special thanks to our friends at Monaco Hotel for lending a hand to make Society Hill more beauti-fall!



## RECYCLING EVERYTHING FROM CRADLES TO COMPUTERS

**St. Peter's School Parking Lot  
3rd and Lombard Streets  
November 15, 10 a.m. to 1 p.m.**  
(earlier if the truck reaches capacity).

SHCA is sponsoring paper-shredding and electronic recycling services on the November 15 Clean-Up Day. The shredding service is for the convenience of Society Hill residents only — sorry, no businesses. It is only for confidential materials; non-confidential papers should be recycled, not shredded.

- Only paper is accepted. No CDs or disks.
- Electronic recycling will take tube TVs, microwaves, computers — anything with a plug. There is a \$20 charge for each TV or computer monitor.
- No large appliances like refrigerators or washing machines. Also no smoke detectors or projection televisions.

This Clean-up Day, neighbors will once again be able to donate new and gently used clothes, coats, books and school supplies to Cradles to Crayons.

This non-profit organization will then find area children in low-income and poverty situations and provide the essentials they need to thrive.

If you partake of these special services and are not yet an SHCA member, please consider joining our civic association by simply filling out the form, either on page 29 of this newsletter or online at [societyhillcivic.org](http://societyhillcivic.org). Any questions? Call 215-629-1288.



 **COSMOS**  
**FINE NAIL SALON**  
PHILADELPHIA'S SALON FOR MEN & WOMEN  
[NAILS ~ WAXING ~ MASSAGE]

<p><b>1204 Walnut Street</b> (215) 627 - 1020 mon-wed: 930a - 700p thurs-fri: 930a - 800p sat: 930a - 600p sun: 930a - 600p</p>	<p><b>1308 Sansom Street</b> (215) 545 - 5456 mon-wed: 930a - 700p thurs-fri: 930a - 700p sat: 930a - 600p sun: closed</p>
---	--

✪ RESERVATIONS RECOMMENDED ✪



*All Gloria Dei's venerable trees remained standing in Hurricane Sandy, preserving the historic graves below.*

## HISTORIC TREES UNHURT IN HURRICANE SANDY

**... Thanks to Liberty Tree & Landscape Management**

When Hurricane Sandy pummeled the city in late October, 2012, not one of the many 200+-year-old trees at Gloria Dei Church on Columbus Blvd. came down. Pastor Joy Segal credits that feat to the outstanding work of Liberty Tree and Landscape Management.

See why so many people recommend Liberty Tree on Angie's List. *Your satisfaction is guaranteed!*

**Some Other Liberty Tree Clients:**

- Pennsylvania Hospital*     *Elfreth's Alley*
- Rittenhouse Square*     *National Park Service*
- Washington Square*     *Bartram's Garden*
- Philadelphia Cricket Club*



215. 886. 6111 | Orelan, Pa  
 215. 725. 3637 | Philadelphia, Pa  
 215. 572. 6937 | Fax  
[www.libertytreecare.com](http://www.libertytreecare.com)

**Mike Duffy**  
 Certified Arborist  
 PD-1766A



## EVERY ALLERGY IS DIFFERENT



### ALLERGY & ASTHMA SPECIALISTS<sup>SM</sup> CAN TREAT YOURS

**THE AREA'S MOST TRUSTED SOURCE FOR ALLERGY EXTRACT**

Our 12 Fellowship-trained, Board Certified Allergists are highly experienced in prescribing safe, effective allergy extracts - **formulated specifically for each patient.**

All extracts are produced in our onsite lab under allergist's supervision.



**ALLERGY & ASTHMA SPECIALISTS, P.C.**

1-800-86COUGH  
[AllergyAndAsthmaWellness.com](http://AllergyAndAsthmaWellness.com)



PHYSICK HOUSE FUNDRAISER

# Revelers Raise their Glasses to Roof Restoration

Society Hill neighbors love to party! They recently packed the house — the Physick House, that is — in support of the campaign to replace the roof on this 228-year-old landmark. As live jazz filled the air, guests were treated to presentations by professional sommelier Michael Walsh, and Dock Street Brewery’s Aleksandr Certo-Ware. A silent auction was held and raised substantial funds. As these

pictures show, guests had a wonderful time. To learn more about the Restore the Roof Campaign, go to [philalandmarks.org](http://philalandmarks.org). To make a donation, call 215-925-2251, press ext. 1, then ext. 5, and speak to Jorja. Or mail a check to Physick House Roof Campaign, 321 S. 4th Street, Philadelphia, PA 19106. Kudos to Martha Levine, Chair of the Physick House Preservation Committee, for a wonderful event!

Guests enjoy the Second Annual Physick House “Restore the Roof” Fundraiser.



**Norm and Sylvia Lieberman, Matt DeJulio and Linda Skale**



**Sommelier Michael Walsh (right) with assistant, pouring and discussing wines.**



**Bob Boris, Linda Seyda and MK Carmichael**



**Tish Bryne, a guest and Marie Scarpulla**



**Amanda Aslansan and Darlene Cavalier**



**Mary Purcell, Steve Miller and Lee Dennis**

# ADORNAMENTI

1106 Pine Street  
215.922.2722

by  
Sent Sisters  
and 25 other artists



## SHOW OF HANDS

1006 Pine Street  
215-592-4010

### 5000 holiday ornaments

by  
Patience Brewster  
and 45 other artists

## Order this Miniature Reproduction of the Three Bears Sculpture

The sculpture of three white granite bears that gives the park at 3rd and Delancey Streets its name is a beloved part of Society Hill. Sculptor Sherl J. Winter envisioned this work as interactive, and children of all ages have embraced it since it was installed in 1966.



Recently he has reproduced the figure in miniature, giving anyone who has ever been to the park (or enjoyed playing there as a child) the opportunity to revisit it at home.

The low introductory offering price is \$125.

It is approximately 6" high x 7" x 5.5" and made of virtually indestructible cast stone.

Three Bears T-shirts are also available for \$20 in brown, grey, aqua, violet, XS,S,M,L,XL

To place an order or for more information, please contact sculptor Sherl J. Winter at: 215 242 0978 or sjwinter00@comcast.net or visit [www.winterartstudio.com](http://www.winterartstudio.com).

We offer a complete line of services to care for your property.



## Complimentary Consultation

By Peter McFarland, Certified Arborist, MA-0164A

Call our office at **215-844-TREE** to make an appointment for a consultation to review your property.

### *Tree & Shrub Healthcare*

- Custom Tree Pruning
- Tree Removal
- Cabling & Bracing
- Insect & Disease Management

### *Landscaping*

- Planting Trees
- Planting Gardens
- Custom Shrub Pruning

### *Sidewalks*

- Brick Replacement



[www.mcfarlandtree.com](http://www.mcfarlandtree.com)



## THIS OLD HOUSE

BY CHUCK GROSHONG AND DANIELLE GROSHONG-KEPERLING

## Stop 'Demolition by Neglect' from Destroying Your Historic Home

Preservation is not just saving seriously decayed old buildings about to be torn down or abandoned. It also concerns the ongoing preservation of well-cared-for homes by implementing a thorough maintenance plan.

All buildings deteriorate over time: sunlight, weather, insects, animals, vegetation and chemical pollutants affect the physical health of a building.

So does neglect, so much so that there is an official term for letting a historical building rot away without maintenance — “demolition by neglect.”

Surely, if demolishing our historical buildings with equipment and wrecking balls is a tragedy, then so is destroying them through neglect.

Without proper maintenance to preserve the original features and traditional craftsmanship that makes your historical home culturally significant, not only is decay inevitable, it can actually be accelerated.

### What you need to know about developing a maintenance plan for your home

Maintenance isn't just preservative; it's preventative, too. The National Park Service's Preservation Brief #47, “Maintaining the Exterior of Small and Medium-Size Historic Buildings,” notes that, “Work done on a crisis level can favor inappropriate treatments that alter or damage historic material.” It also states, “It is enticing to read about ‘maintenance-free’ products and systems, particularly waterproof sealers, rubberized paints and synthetic siding, but there is no such thing as maintenance-free

when it comes to caring for historic buildings. Some approaches that initially seem to reduce maintenance requirements, over time actually accelerate deterioration.”

Regular maintenance also preserves your finances. Restoring historical architectural features is far costlier than maintaining them. A maintenance plan with a qualified contractor helps distribute both big and small improvement projects over time. This helps homeowners to budget and prepare for spending.

Your maintenance plan should be as unique as your home. In addition to keeping with preservation standards, a solid plan should be customized to your building's individual needs and architectural features

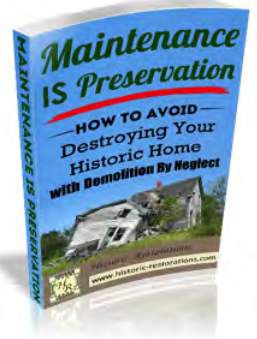
The maintenance plan must also be methodical. It needs to be organized so that care is seamless and proper attention is always given to the most critical areas. Include descriptions and photos of architectural features, a prioritized schedule for recommended repairs and documentation of all work done. Be sure to include a method for your contractor to notify you when it is time to do a particular project.

### Special Offer for Reporter Readers!

Get your **free** copy of our full 10-page report: *Maintenance IS Preservation: How to Avoid Destroying Your Historic Home with Demolition by Neglect*

For your free copy, contact Moira at 717-291-4688 or mkarahalis@historic-restorations.com.

This experienced father/daughter preservation team owns and operates **Historic Restorations**, a construction firm that specializes in historic buildings.





# SONOS

ENJOY ALL OF YOUR MUSIC,  
IN EVERY ROOM OF YOUR HOME,  
WIRELESSLY.

---

No wires and no drilling.  
Ask for a FREE in home consultation.



Apple Specialist

116 S. 13th Street  
Philadelphia, PA  
215-599-0794  
springboardmedia.com

## R. Chobert Decorating Co.

*Painting/Wallcovering  
Interior/Exterior  
Creating Beauty Since 1967*

**Rupert Chobert**

641 Reed Street  
215.389.7788 TEL  
267.977.7443 CELL  
215.755.6655 FAX



## Howard J. Goldblatt

GENERAL CONTRACTOR, INC.

**Historic Restoration  
Kitchen, Bath, General Renovation  
Window Replacement**  
35 Years Experience  
References Available

**610-642-1834**      **hjggc@verizon.net**

| Philadelphia License #398432 | Pennsylvania License #20665 |



## The CENTER for GROWTH

psychological counseling • therapy • support groups

**Is Your Life Unmanageable?  
Or, Are You Simply Seeking A Coach  
To Help You Make Better Decisions?**

**We Can Help.**

- Individual Therapy
- Couples Therapy
- Family Therapy
- Play Therapy
- Parenting Support Group

Present this  
ad at your 1<sup>st</sup>  
session & your  
2<sup>nd</sup> session is  
**FREE.**

233 S. 6th Street, Suite C33  
Philadelphia, PA 19106

[www.therapyinphiladelphia.com](http://www.therapyinphiladelphia.com) • (267) 324-9564



**JEFF CABOT, DMD**

[WWW.QUEENVILLAGEFAMILYDENTISTRY.COM](http://WWW.QUEENVILLAGEFAMILYDENTISTRY.COM)

**215-925-7330**



**Patricia Bentz CPDT-KA, CDBC, CNWI**  
Certified Dog Trainer & Behavior Consultant

*"Going to the Dogs"*

### K-9 Training & Behavioral Therapy

- One-on-One Obedience Training at Home
- Behavioral Consultation
- Puppy Head-Start
- Nose Work Group Classes



**(215) 551-5254**  
Queen Village

Hours by Appointment

Gift Certificates Available



## COMMUNICATION MADE EASY

**mediacopy**  
IMAGING YOUR VISION

ON DEMAND PRINTING SOLUTIONS

Media Copy is a full service digital printing company with offices in Center City Philadelphia, and the suburbs. State of the art technology, extraordinary customer service and attention to detail place us apart from the competition. Our infrastructure allows us to provide our customers with high quality products in a cost effective fashion. From conception to completion, the basic to the complex, we are on the job with the personal attention you should expect.

**Philadelphia Location:**  
1310 Sansom Street • Philadelphia, PA 19107  
phone: 215.717.5151 • fax: 215.717.7400

**Media Location:**  
11 East State Street • Media, PA 19063  
phone: 610.566.8499 • fax: 610.566.4513

[www.mediacopyonline.com](http://www.mediacopyonline.com)

## EXPLORING THE CITY

BY JIM MURPHY

## The Pennsylvania Academy of the Fine Arts Historic Landmark Building

If you asked me to rank Philadelphia's must-see sights, the unique Pennsylvania Academy of the Fine Arts (PAFA) building on N. Broad Street would easily top my list of buildings.

To me, this one-of-a-kind creation, primarily designed by famous Philadelphia architect Frank Furness and located just up the street from City Hall, should be number one on every Philadelphian's bucket list. It's that spectacular.

### Interesting Oddities:

#### Furness' name is really pronounced

"furnace." I just learned the correct pronunciation about two years ago while viewing a Penn website on Furness' superb campus library — now the Fisher Fine Arts Library. Most Philadelphians I know still mispronounce it.

**Decorated war hero.** Furness is the only major architect to receive the Congressional Medal of Honor. He was cited for bravery at the Battle of Trevilian Station, Virginia, on June 12, 1864. Captain Furness commanded Company F of the Sixth Pennsylvania Cavalry, also known as Rush's Lancers, during the Civil War.

**The gorgeous Grand Stairhall was not Furness' original design.** Instead, says Harry Philbrick, director of the museum at PAFA, the stunning stairhall sweeping up to the gallery level was the steering committee's idea, and it worked. Furness' design was a more conventional up-and-back stairway

#### Five Innovations to Look for:

**A trend-setting truss.** Furness installed a massive steel truss, typically used on bridges, along the north side of the building. Why? He wanted to install brick on the outside wall of the gallery above the large windows, and glass can't hold up brick. Besides supporting the second-floor galleries, the truss allows the lower part of the wall to be a non-load bearing or "curtain" wall. As historical architect George Thomas explains, "Curtain walls are integral to virtually every modern skyscraper, pointing out just how revolutionary and future-oriented this building was."

**Furness' futuristic plan.** While the building opened five years before the Brush Electric Light Company — a PECO predecessor — went into business, Furness's drawings show he designed for the new power source.

**A passive ventilation system.** Not only did Furness provide abundant lighting with a gallery skylight, his mostly glass roof above it also acts like a greenhouse. George Thomas, now writing his latest book on the architect, says Furness "designed a mechanical sash system that opened up large panels of the roof to let out heat."

**A large freight elevator.** Controlled with ropes, it opens to the street and the gallery from the back of the building. The elevator transported large equipment, as well as horses, which were brought in twice a year as subjects for student projects. Horses don't do steps well.

**Industrial touches.** Look carefully and you'll see that Furness placed pistons, gears, cogs, drive shafts and more, as ornaments, inside and outside of the museum. He also used the four card suits — hearts, clubs, diamonds and spades — in many places.

Unfortunately, Furness' reputation suffered greatly in his later years, as more "modern" architectural styles became popular. Many of his most notable works were torn down.

But do yourself a favor. Visit this marvelous building soon. Experience its beauty, workmanship and technology. And enjoy the fact that you are standing inside a truly amazing "factory for fine art."

*Eclectic, engaging and exceptional: this Frank Furness masterpiece is my all-time favorite building in Philadelphia*



**"Born to Bend," a sculpture by KAWS, a world-renowned artist, will be on the front facade of PAFA's Historic Building until January 4, 2015.**

### FAST FACTS

**Name:** Historic Landmark Building, Pennsylvania Academy of the Fine Arts

**Honors:** National Register of Historic Places, National Historic Landmark

**First:** Art School and Museum in the U.S.

**Address:** 118 N. Broad Street, Philadelphia, PA 19102

**Style:** Second Empire, Renaissance, Gothic

**Constructed:** 1871 - 1876

**Hours:** Tuesday - Saturday, 10 a.m. to 5 p.m.; Sunday, 11 a.m. to 5 p.m.; Closed Mondays and legal holidays.

**Admission:** Adults: \$15; Seniors (60+) & Students (with ID): \$12; Youth (13-18): \$8; Children 12 and under, Military Personnel (excluding groups), and Members: Free.

**Docent Tours** (free with admission): Tuesday - Sunday, 1 & 2 p.m.

**Phone:** 215-972-7600

**Website:** pafa.org

**Jim Murphy**, a freelance direct-response copywriter, has run his own marketing consulting business since 2004. He's also a certified member of the Association of Philadelphia Tour Guides.



FRIENDS' CENTRAL SCHOOL



Discover the Magic!

*Twilight*  
**OPEN HOUSE**  
Thurs., Nov. 13  
4 pm

Walk-in Wednesday tours also available each week.  
Lower School tours depart at 9 am.  
Middle & Upper School tours depart at 8:30 am.

610.645.5032

friendscentral.org

# Tutor

Experienced Teacher  
Certified and Licensed in PA & NJ

Elementary and Secondary Subjects  
Spanish and Special Education  
Essay Writing - College Applications  
SAT Prep

Able to modify instructional practices to address a wide range of student learning challenges

Diane S. Stein, Ed.D.  
215-205-0319

## WE PICK UP FURNITURE DONATIONS

FAST | FREE | TAX-DEDUCTIBLE

MOVING? DOWNSIZING? REMODELING?

Your donation supports self-determination in the hands of the African community.



Tyron Lewis  
Community Gym



Uhuru  
Health Fest



Uhuru  
Jiko Kitchen

**UHURU** FURNITURE & COLLECTIBLES  
*...driven by African self-determination*

uhurufurniturephilly.blogspot.com

215-546-9616 | 832 N. Broad St | www.apedf.org

An economic development project of the African People's Education and Defense Fund

## NATIONAL WATCH & DIAMOND

Visit our website at NationalWatch.com



PRE-OWNED  
ROLEX,  
CARTIER,  
BREITLING  
& MORE!

**OVER 400 ROLEX IN STOCK**

ROLEX REPAIR & REFINISHING - ONE YEAR WARRANTY  
WE BUY GOLD, SILVER & DIAMONDS

**(215)627-WATCH** 8th & Chestnut Streets  
Philadelphia, PA 19106

N.W.E. IS NOT AN OFFICIAL ROLEX JEWELER

## MUSIC (AL) MATTERS

BY DIANA BURGWYN

## Applause: The Do's, the Don'ts and the Whys

In the 18th and 19th centuries, classical music was considered more an entertainment than an art, and knowledgeable audiences were expected to applaud whenever they wanted to express their appreciation, even while the music was being played. Indeed, Mozart wrote gleefully to his father when one of his compositions was interrupted by constant applause.

Attitudes changed drastically in the 20th century when classical music was seen differently — as a hallowed form of art. With this reverence came restrictions. People were not to applaud between movements of a symphony, but wait until the end of the last movement. The same applied to concertos. Even if the first movement featured a dazzling cadenza for the soloist that practically begged for applause, audiences were to sit on their hands. Stricter still was the dictum that until the conductor lowered his arms at the end of a piece, silence was to be maintained. Whatever happened to spontaneity?

Some authorities date the change in etiquette to Richard Wagner. Audiences in his opera house in Bayreuth, Germany, maintained a hushed, reverent silence throughout; even the rustle of a program was frowned upon. But the most extreme exponent of music-as-religion was the flamboyant conductor Leopold Stokowski, who tried, and failed, to eliminate *all* applause at Philadelphia Orchestra concerts.

In truth, there are legitimate reasons for such seemingly arbitrary rules. Every movement of a symphony relates to the other movements. When the work is heard as a whole without the interruption of clapping, the overall effect is much more powerful. Several seconds of silence at the end of a piece, especially if it is quiet and contemplative, reverberate in memory and are as precious as the music itself. Individual songs in a cycle together form a story, a mood, that is broken by applause before the last song is completed. Chamber music, the most intimate of instrumental forms, should be heard as an inseparable whole.

But there have always been exemptions to this rigidity. At an opera, clapping and shouts of “bravo” (or “brava” if the singer is a woman) are expected and desired at the end of a clearly defined aria. Ballet was and is an even looser form; it's fine to acknowledge a perfectly executed pirouette or arabesque while the orchestra is playing.

No wonder even President Barack Obama once said that he didn't know when to clap during a classical music performance. There are no definite answers for him or anyone else. Certainly no performing musician approves of chatting, cell phones, or rustling programs and the like. But they are not unified in terms of applause. Many, whom I will call the accommodationists, feel that hindering audiences from expressing their enthusiasm when they want to is unfair, intimidating and self-defeating in that it turns off potential new attendees. Furthermore, they maintain it causes audiences to feel like outsiders rather than participants in the musical experience. Among these are such well-known musical figures as conductor Leonard Slatkin, pianist Emmanuel Ax and critic Alex Ross of the *New Yorker*.

On the other side are the purists or, less flatteringly, the elitists. Holdouts for strict adherence to the rules about applause include conductors Daniel Barenboim, Pinchas Zuckerman and Riccardo Muti, whose glares, gestures and chiding words about misplaced applause are, to say the least, embarrassing to the perpetrators.

So what is a poor audience member, unfamiliar with the particulars of applause, to do? One answer is to clap when you want to do and ignore the stares of hostility. Another is to assume that most of the audience members know the rules, and follow their lead.

Recently, I watched Philadelphia Orchestra conductor Yannick Nézet Séguin as the audience began to applaud at the end of the rousing first movement of the Khachaturian Piano Concerto. He stood patiently facing the musicians without acknowledging or denying the applause, and then went on to the next movement. No applause was heard at the end of the second movement. But when the work was completed, he slowly lowered his arms and turned graciously and gratefully to the wildly enthusiastic audience, at which point practically everyone rose to their feet cheering. Now that's the way to educate without intimidating.

---

**Diana Burgwyn** has been writing about music for many years as a critic, feature writer and program annotator. Currently she writes for the *Pennsylvania Gazette*, the Curtis Institute of Music and *Opera Philadelphia*.



## OUT AND ABOUT

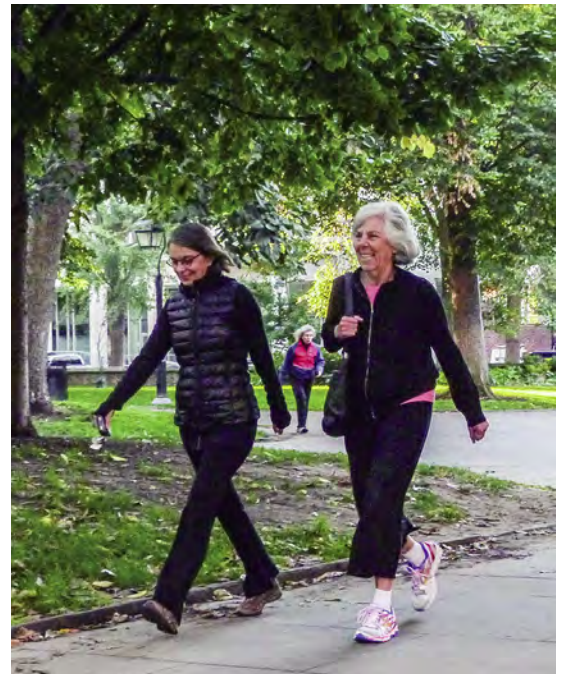
## Philly Gets Healthier...

Congratulations are in order as “Philly Is Walking In The Park” celebrates its second anniversary! This physician-led, Society Hill community walking program offers neighbors self-paced physical activity and camaraderie in the serenity of beautiful, historic Washington Square.

The founding director of the walking program and the free medical speaker series, “Society Hill – Hot and Healthy” is Lisa D. Unger, M.D., F.A.C.P., a board certified internist with advanced

training in the field of nutrition. A Society Hill resident for more than 25 years, she also serves on the SHCA Board of Directors.

In addition, Dr. Lisa Unger and Lisa Eizen coordinate occasional “CommuniTEAS” for walkers at local venues. These feature presentations by doctors on topics related to preventative health and nutrition. Everyone is invited to meet the group at the fountain in Washington Square at 8 a.m. on Mondays, Wednesdays and Fridays for 30 minutes of exercise.



#### Bonnie Halda

is a freelance photographer specializing in historic buildings and the urban environment. She's also a historical architect with the Northeast Regional Office of the National Park Service.

**These Philly Walkers are also volunteer greeters for the “Society Hill – Hot and Healthy” speaker series held at The Athenaeum of Philadelphia. Pictured L to R: Sue Carroll, Sylvia Lieberman, Tom Carroll, George Kelley, Christine Calbry and Sue Binswanger.**



OUT AND ABOUT

...Step by Step!



**Lisa Eizen:** “The best way to start the day is with a walk through beautiful Washington Square—and the health benefits are a bonus!”



**Giuliana Pierson:** “As a new member, I was really welcomed by the other walkers, and now I really feel part of the group.”



**Mira Zorovich:** “It’s not imposing, so free, so wonderful and available when you want it. I can see improvement in myself.”



**Dr. Lisa Unger:** “Walking is the best way to stay healthy for life! I love leading these enthusiastic walkers in our beautiful Society Hill neighborhood.”



**George Kelley:** “I feel that the social stimulation aspect of the walking program is so worthwhile because of interesting conversation and new friends.”



**Barbara Levy:** “My first time walking I couldn’t make it around the park once. Within six weeks I could walk the full 30 minutes. As a result, my stamina is back.”



**Talula’s Daily, 208 W. Washington Square, was the setting for a CommuniTEA with a presentation on “Vanquishing Viruses: Update on Ebola and Influenza” by Dr. John J. Stern, Chief, Division of Infectious Diseases, Pennsylvania Hospital.**



**A recent “CommuniTEA” featured a presentation by Dr. Lisa on “Weight Loss and Healthy Lifestyle Tips” held at The Bagel Factory, 510 Walnut Street.**

**AD Allan Domb**  
Philadelphia's Largest Luxury Condominium REALTOR®

1845 Walnut Street, Suite 2200  
Philadelphia, PA 19103  
215-545-1500  
www.allandomb.com

**Allan Domb  
Real Estate Presents**



**THE CADWALADER HOUSE**

240 SOUTH 4TH STREET

Opportunity to create an estate home in this historic mansion on 4th Street in Society Hill! Built in 1829, the home's namesake is Judge John Cadwalader, best known for his prestigious legal career including one term in the U.S. House of Representatives and serving as a United States District Court Judge for the Eastern Region of Pennsylvania. The residence is five floors plus basement and has potential for two parking spaces and a pool. 9,003 sf  
**\$2,950,000**

**THE SHIPPEN-  
WISTAR HOUSE**

238 SOUTH 4TH STREET

Opportunity to create an estate home in this historic mansion on the corner of 4th and Locust Streets in the heart of Society Hill! The house, built around 1750, was the former residence of Dr. Shippen and subsequently Dr. Wistar, two internationally known physicians in the late 1700's and early 1800's. The home has four floors plus a basement, a private garden and potential for up two parking spaces and a pool. 4,670 sf  
**\$2,750,000**



## THE FOOD TRUST NEWS

## Headhouse Market Open for Holidays

Like everyone else, the Food Trust and Headhouse Farmers' Market merchants are gearing up for the holiday season. The good news for Society Hill is that the Market will be open right up until Christmas weekend.

Whether you plan to order your Thanksgiving turkey from the Market, provision for appetizers, side dishes or dessert, or simply pick up a nice hostess gift, like chocolates or gourmet coffee, the merchants will be ready for you. Seven merchants, along with the Heart Food Truck, will be well-supplied with ingredients for your holiday celebration. Note: the Market will be open Wednesday, November 26 from 10 a.m. to 4 p.m., but will be closed on Sunday, November 30.

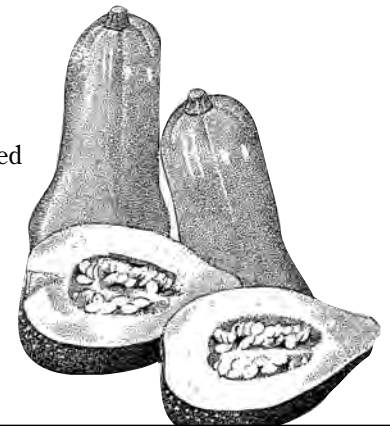
In the run up to Hanukkah and Christmas, the Market will remain on its usual Sunday schedule — 10 a.m. to 2 p.m. — on December 7, 14 and 21, with 25 merchants committed to those dates. Says Katy Wich, Manager of the Farmers' Market Program for the Food Trust, "This is a great time to stock up for holiday parties.

Things like charcuterie, smoked scallops, pickles, cheeses and pies are in plentiful supply. There will be bountiful greens and root vegetables, and you can make a beautiful crudité tray with apples, pears, carrots and beets." It's also a source for presents and stocking stuffers for the foodies on your gift list.

Katy adds, "We routinely see about 3,000 customers come through the Headhouse Market each week, so we are motivated to keep the Market open and well-provisioned through the holiday season."

One item that remains available into late fall is butternut squash. Headhouse Market Manager Lisa Kelly offers the recipe reprinted below, which she created to showcase this seasonal ingredient.

For further healthy recipe ideas and details on all the Farmers' Markets operated by the Food Trust, see [thefoodtrust.org](http://thefoodtrust.org).



### BUTTERNUT SQUASH PASTA SAUCE WITH ITALIAN SAUSAGE

#### Serves 4

- 1-2 tablespoons olive oil  
(or more as needed)
- 1½ pounds bulk sweet Italian sausage
- 1 medium onion, chopped
- salt
- 4 cloves garlic, finely chopped
- 1 bay leaf, fresh or dried
- 4 to 6 sprigs fresh sage leaves cut into chiffonade (about 2 tablespoons) or 2 teaspoons dried sage
- 1 tablespoon dried thyme or 2 tablespoons of fresh thyme leaves
- 1 cup dry white wine
- 2 cups chicken stock (separated into 1½ cups and ½ cup)
- 2 cups roasted/mashed butternut or kuri squash (see note for instructions)
- ½ - ¾ cup half and half or whole milk
- 1 pound pasta, cooked
- Romano or Parmigiano cheese, for grating

**To prepare squash:** Heat oven to 400°. Cut squash in half, remove seeds and lay cut side up in baking dish. Pour ½ cup water around squash and bake 1 - 1½ hours until squash is totally soft. Cool, scoop flesh and mash. One large squash should yield enough for this recipe.

- 1** Heat olive oil in a large skillet or saucepan over a medium or medium-high flame. Crumble and brown sausage in batches, adding oil as necessary. Drain the cooked crumbles on paper towels and set aside.
- 2** Lower flame slightly, add onion to pan with a few pinches of salt. Cook until softened but not browned, adding a touch more oil as necessary.
- 3** Add chopped garlic, bay leaf, sage and thyme and stir, cooking until fragrant — about 30 seconds.
- 4** Raise flame slightly, keeping an eye on the garlic so it doesn't burn, then deglaze pan with wine, using a wooden spoon to scrape up all the tasty bits on the bottom of the pan. Lower flame slightly and allow wine to reduce by about half, stirring often.
- 5** Add 1½ cups chicken stock and roasted/mashed squash. (Hold onto other half cup of stock for later if needed.) Stir everything together, add sausage back into pan, reduce flame to low and add milk. Stir to combine, taste and add extra chicken stock if it's needed to loosen sauce. Simmer on low for 15 minutes or so (stirring often), remove bay leaf, then serve with pasta and tons of grated cheese.

**AD Allan Domb**  
Philadelphia's Largest Luxury Condominium REALTOR®

1845 Walnut Street, Suite 2200  
Philadelphia, PA 19103  
215-545-1500  
www.allandomb.com

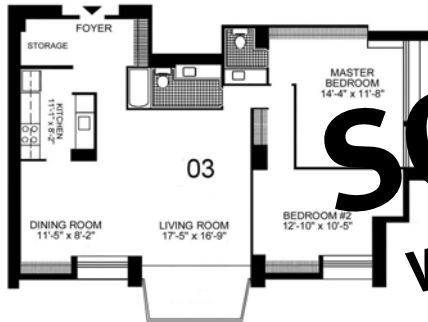
**Allan Domb Real Estate Presents**



604 S. WASHINGTON SQUARE

**One Bedroom With Private Balcony**

South-facing one bedroom with lots of natural light, a private balcony with treetop views, galley kitchen with generous cabinet and counter space and excellent closet/storage space. 778 sf  
**\$279,900**



**Two Bedroom with Panoramic Southern Views**

Two bedroom, one and a half bathroom on a high floor with dramatic southern views. The home has a generous open floor plan, a private balcony providing views of the city to the south and the skyline to the north, an updated kitchen and wood floors throughout. 1200 sf  
**\$569,999**

**SOLD**  
**We can sell yours, too!**

**Allan Domb Real Estate Presents  
The Lippincott**

227 S. 6TH STREET



**Totally Custom Two Bedroom Plus Den**

Magnificent two bedroom plus den, two and a half bathroom featuring a balcony, 11' ceilings, walnut floors, exposed brick walls and exposed wood beams. The residence has an open floor plan with a Joanne Hudson designed kitchen, large living room and dining room, and a master suite with his-and-hers walk-in closets and spectacular bathroom. This condominium is one of a kind! 2189 sf  
**\$1,600,000**

**SOLD**  
**We can sell yours, too!**

**Two Bedroom Plus Den Showplace**

Two bedroom plus den, three and a half bathroom showplace overlooking Washington Square and offering southern exposure. The condominium has a Joanne Hudson kitchen, designer bathrooms, lavish master suite and wonderful entertaining and living space. 3510 sf  
**\$3,500,000**



## PHILLY FOOD LOVERS

BY KERI WHITE

## Spitalieri's Authentic Italian Fare

Spitalieri's, an authentic Italian BYO, can be found on Passyunk Avenue, steps off South Street, in the space formerly occupied by Gnocchi. We popped in for dinner one recent Friday evening.

Joanna Spitalieri, who co-owns the restaurant with her mother, Jeannie, greeted us warmly. She was particularly welcoming when she found out we were from the neighborhood, and was thrilled that we had received a recommendation from a Society Hill regular.

The 40-seat room is inviting; its cool blue tones create a calm, relaxing atmosphere. Large, framed abstract paper cutouts adorn the walls, and the comfortable leather seats and banquettes complement the décor.

The Spitalieris and Chef Sam Miller are committed to sourcing locally. They deliver down-to-earth home cooking that is family friendly. All pastas arrive fresh from Talluto's on 9th Street. Fresh produce comes from Anastasio's on Christian Street, and the bread is delivered daily from Sarcone's, also on 9th Street.

Speaking of bread, ours was accompanied by a delightful basil-infused butter. We ordered the special flatbread as an appetizer for the table; the crust was light and crispy, topped with fig, ricotta, sliced strawberries and arugula. We also shared "Gino's bites," delicious crostini toasts topped with marinated chunks of filet mignon, toasted garlic, dill pickle, aged balsamic vinegar and fresh arugula.

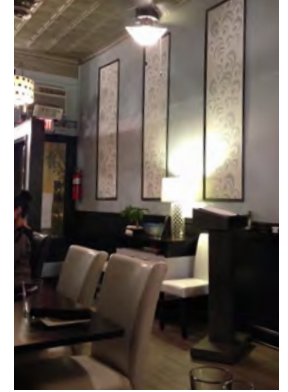
Main dishes are traditional Italian. We sampled the linguine with white clam sauce; the perfectly cooked fresh pasta gave this perennial favorite

added appeal. The chicken parmigianino offered a well-executed version of this classic. I hesitated over ordering the eggplant parmigianino — it's a dish that I love to eat, but hate to make. I use this love/hate relationship as one of my prime criteria when ordering in a restaurant. Their version, however, is made from a recipe passed down from Spitalieri's Sicilian grandmother and contains hard-boiled eggs, which I don't like. I discussed this at length with Spitalieri, who assured me that the eggs did not stand out, but promised that she would bring me something else if I didn't like the dish. Turned out that wasn't necessary.

The menu contains several other interesting dishes. For appetizers, stuffed peppers with risotto, as well as sausage, broccoli rabe and mozzarella flatbread are offered. The escarole and beans with leafy greens is another option. There are also soup and salad selections, as well as a variety of entrées, including cheese ravioli, meatballs and spaghetti and acorn squash risotto. While the menu is not extensive, there is certainly sufficient diversity to meet most preferences, and the staff seemed willing to accommodate special requests.

We were all too full to sample dessert, but the homemade sweets menu offered up cannoli dip, cheese pie with fig sauce, pizzelle cookie sundae and warm chocolate bread pudding. Next time, we'll save room!

**Claire Batten** and **Keri White** are the dynamic duo behind Philly Food Lovers. They are business partners in KCC, a marketing consultancy and copywriting agency. For more of both of their writings on food, visit [phillyfoodlovers.com](http://phillyfoodlovers.com).



**Spitalieri's Italiano  
Ristorante**

613 E. Passyunk Avenue  
267-324-3144  
[www.spitalieris.com](http://www.spitalieris.com)

## Old Pine Street Church

Established 1768



Where History, Faith,  
Message, Music &  
Fellowship intersect at

412 Pine Street

Sunday Worship  
10:30am

215-925-8051  
[www.oldpine.org](http://www.oldpine.org)

## Celebrate Christmas at St. Peter's

### Sunday, December 21:

4 p.m. Lessons and carols with the St. Peter's Choir

### Christmas Eve:

5 p.m. Children's service with pageant

9:30 p.m. Festival service with choir & brass

### Christmas Day:

11 a.m. Festival service with organ

Third and Pine Streets

215-925-5968 | [www.stpetersphila.org](http://www.stpetersphila.org)



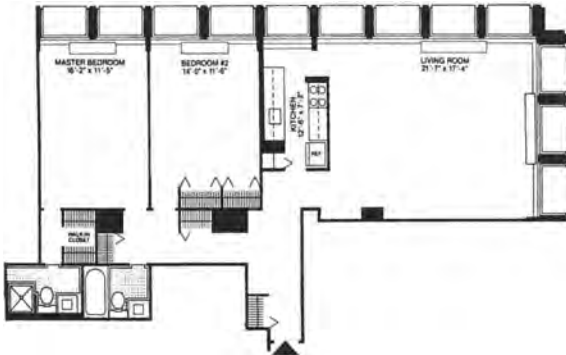
**AD Allan Domb**  
Philadelphia's Largest Luxury Condominium REALTOR®

1845 Walnut Street, Suite 2200  
Philadelphia, PA 19103  
215-545-1500  
www.allandomb.com

**Allan Domb Real Estate Presents**

**SOCIETY HILL TOWERS**  
THE CONDOMINIUM

200-220 LOCUST STREET

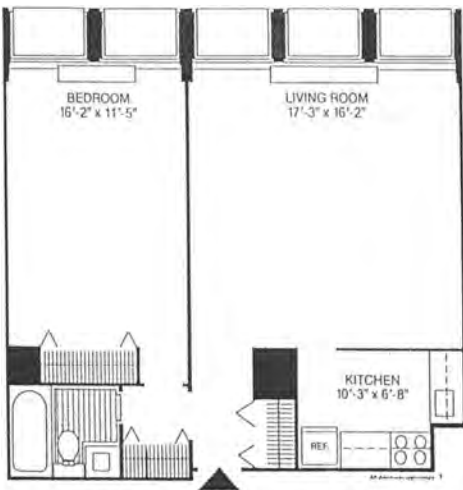


**Sun-soaked Two Bedroom with Treetop City Views**

Two bedroom, two bathroom residence with floor-to-ceiling windows in all rooms offering magnificent city skyline views to the west and intimate views of Society Hill and the Ben Franklin Bridge to the north. The home has an updated kitchen, wood floors and great closet space. 1183 sf  
**\$469,900**

**Some of our recent sales:**

- |           |            |            |
|-----------|------------|------------|
| 2H NORTH  | 10F NORTH  | 19C WEST   |
| 5C WEST   | 11BCD WEST | 19F WEST   |
| 5E WEST   | 11E WEST   | 22DE SOUTH |
| 5F NORTH  | 11G WEST   | 23G SOUTH  |
| 5G WEST   | 12G WEST   | 24EF SOUTH |
| 6BC SOUTH | 14C SOUTH  | 24G NORTH  |
| 6D NORTH  | 15A WEST   | 25BC SOUTH |
| 7B NORTH  | 17G WEST   | 28E SOUTH  |
| 8B NORTH  | 17H SOUTH  | 28GH NORTH |
| 8G NORTH  | 18E NORTH  | 30H NORTH  |

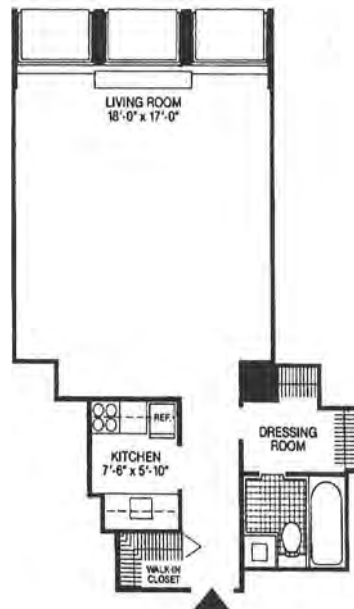


**One Bedroom with Open Floor Plan**

One bedroom on a high floor offering dramatic southern views of the river, lots of natural light and a generous open floor plan. 712 sf  
**\$259,900**

**Sunny Studio with Skyline Views**

Sunny studio with floor-to-ceiling windows, Center City skyline views, a recently renovated kitchen and bath, and tile floor. 504 sf  
**\$185,000**



**SAFE AND SOUND IN SOCIETY HILL**

BY MARILYN APPEL AND MARTHA LEVINE

## How South Street Affects Society Hill

On September 15, SHCA's Safe & Sound Committee Chairs Marilyn Appel and Martha Levine set up a meeting with Captain Brian Korn of the 6th Police District, Captain Frank Milillo of the 3rd Police District, SHCA president Bob Curley and South Street Headhouse District director Mike Harris. The topic: Discuss how the South Street corridor affects the quality of life in Society Hill — the impact on crime, vandalism and graffiti. It has been observed that as people leave South Street, often after bars close at 2 a.m., there is an increase in crime in Society Hill. We said we wanted more police presence here to protect us. We know there are many officers on South Street, but we have few here in our neighborhood.

The lively exchange among the participants resulted in these points:

- Weekends are the most troublesome for crime. On weekends, the 3rd Police District patrols, which usually extend north to Lombard, will now go as far as Spruce Street. Therefore, the 6th and 3rd districts will collaborate to oversee revelers leaving the bars heading elsewhere.
- There will be more consistent patrols by bike officers and officers in cars.
- Recently, the police have placed undercover officers to survey the area from 12 midnight to 8 a.m. on weekends.
- Cameras on South Street have helped to catch criminals and deter crime. Police encourage residents to install cameras to help law enforcement solve crimes. The Safe Cam program is recommended. Homeowners

register their cameras with the police, so that police can contact them for footage if a crime occurs near their home. Visit [phillypolice.com](http://phillypolice.com) for more information.

- Mike Harris said they are trying to attract a higher level of businesses to South Street. Also, SSHD hires off-duty officers to monitor their special events. The special events do not seem to be a problem, though.

We are very fortunate that the 6th and 3rd Philadelphia Police Districts are closely aligned and headed by commanding officers that know each other well and have worked together for some time.

Although you might not see them, our officers are out and available, including bike officers Hettinger, Sprouls, Keenan and Downey.



**6th District bike patrol Officer Charles Hettinger is assigned to Society Hill.**

**Marilyn Appel** has served as chair of our 6th District's Police District Advisory Council since 1980. **Martha Levine**, an active SHCA board member, has created and chaired many projects, such as Welcome Baskets, Block Coordinators, "Fix the Brix" and the Franklin lights restoration project. She also co-chairs the yearly house tour.

*Creating harmony in body and mind*

*Judy Moon and Associates*

**CONVENIENT, RELAXING MASSAGE THERAPY**  
Washington Square South  
in the Hopkinson House

ABMP Certified    267.671.0881    [www.judymoon.com](http://www.judymoon.com)

**LIONESS ANTIQUES INC**  
JEWELERS since 1976

Diamonds  
Engagement Rings  
Custom Designs  
Appraisals  
Repairs

**520-A S. 2ND STREET**  
Between Wawa & RiteAID **215.592.4099**

**Intelligent Exercise with Profound Results!**

New client special:  
Three one-hour private sessions for \$125.00 at our fully equipped Center City studio at 9th and Spruce Streets.

*PilatesByPamela*

Stott Pilates Certified Instructor  
267-519-3639  
[pilatesbypamela@gmail.com](mailto:pilatesbypamela@gmail.com)    [www.pilatesbypamela.com](http://www.pilatesbypamela.com)

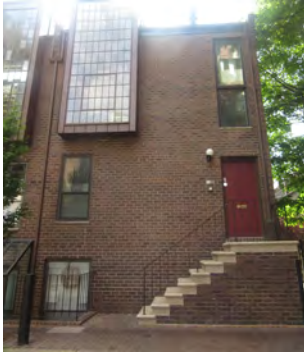
**AD Allan Domb**  
Philadelphia's Largest Luxury Condominium REALTOR®

1845 Walnut Street, Suite 2200  
Philadelphia, PA 19103  
215-545-1500  
www.allandomb.com

## Allan Domb Real Estate Presents

### St. James Court

### Luxury Townhomes for Sale



#### Multi-level Townhome Condominium

Multi-level townhome condominium featuring wood floors, lots of natural light, a large master suite, and balcony overlooking the community's pristine courtyard. 1602 sf  
**\$425,000**

#### 802 Pine Street

Beautifully maintained 4 bedroom, 4.5 bath overlooking Pennsylvania Hospital with an open floor plan, finished basement, 2 car parking, 2 kitchens and 2 living rooms (can be converted to 2 units). 3000 sf  
**\$875,000**

#### 620 Pine Street

Three story Washington Square townhome with 5 bedrooms and 4.5 baths, an open updated kitchen, finished basement, private rear patio and one deeded parking space. 2740 sf  
**\$850,000**

## Allan Domb Real Estate Presents

**INDEPENDENCE PLACE**  
SOCIETY HILL · PHILADELPHIA

233 - 241 S. 6TH STREET



#### Luxury Living around Washington Square

Beautifully updated two bedroom, two bathroom with a private balcony and intimate southeast city views. The home features wood floors; an open renovated kitchen with wood cabinetry, stainless steel appliances and a large island; and two designer bathrooms with custom appointments. 1173 sf  
**\$499,900**



#### One Bedroom with Alcove and Balcony

One bedroom plus alcove, one and a half bathroom with a private balcony providing Washington Square and city skyline views. The residence has an open floor plan, perfect for entertaining. The bedroom has an updated ensuite bathroom and a walk-in and wall closet. 1118 sf  
**\$375,000**



#### South-Facing One Bedroom with Balcony

South-facing one bedroom with wonderful city views to the south and a large, private balcony. The residence has an open floor plan, completely renovated kitchen, hardwood floors, laundry room with washer and dryer and spacious bathroom. 928 sf  
**\$339,900**





ON OUR SHELF

BY RICHARD DE WYNGAERT

The holiday season is fast approaching. Hopefully, this column will suggest the perfect gift for friends and family — books to make them smile and, if well chosen, broaden their perspectives. Happy reading!

**Fiction**

*Gutenberg's Apprentice*  
by Alix Christie

Alix Christie, a master printer herself, has written a gripping novel about the making of the Gutenberg Bible, the first book ever printed, which was one of the most momentous events in history. It is a story of invention, intrigue and betrayal.



*The Original Folk and Fairy Tales of the Brothers Grimm: The Complete First Edition*  
translated by Jack Zipes

An ambitious and magnificent accomplishment, this represents the first complete English translation of the original 156 Grimm Brother fairy tales from the 1812 and 1815 editions. They are accompanied by sumptuous new illustrations from award-winning artist Andrea Dezso.



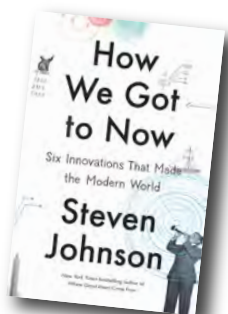
**Juvenile Fiction**

*Evil Librarian* by Michelle Knudsen

This is a very, very funny novel about a “super cute” young male librarian, who many of the girls in the school have a crush on. But he is actually not interested in education; rather he is a demon intent in sucking the life force out of the entire student body. Lots of high school drama and comical angst!

**History**

*How We Got to Now: Six Innovations that made the Modern World* by Steven Johnson  
Steven Johnson, author of *Where Good Ideas Come From*, has written a book chronicling six important innovations in science and technology that have fundamentally shaped our world, but are largely unrecognized or taken for granted. Johnson conveys how critical it is for our society to recognize both how and why new ideas emerge, and to cultivate, not girdle, a fertile infrastructure.



**Biography**

*Dr. Mutter's Marvels* by Cristin O'Keefe Aptowicz

A wonderful, superbly crafted biography that brings to life the overlooked influence and astonishing career of one of the real innovators and fathers of modern American medicine. Since Mutter was chief of surgery at Jefferson Medical College, this book should be on the reading list of any Philadelphian with an interest in medicine and science.



**Literary Collection**

*The David Foster Wallace Reader*,  
Little Brown and Company

This volume presents a wonderfully eclectic selection of David Foster Wallace's writing — written by one of America's most talented and creative and influential writers of his generation.



**Culinary**

*Cookbook Book* by Annahita Kamali

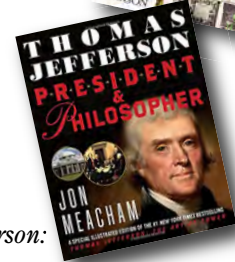
This stunning book has beautifully reproduced the pages and recipes from over 100 revered and influential cookbooks, which have contributed to and shaped the way we create and cook in the kitchen. The art and design of this book are exemplary. A simply beautiful gift for cooks, cookbook collectors and those who love culinary traditions.



**Juvenile Nonfiction**

*Thomas Jefferson: President & Philosopher*  
by Jon Meacham

This is a handsomely illustrated adaptation of Jon Meacham's bestselling *Thomas Jefferson: The Art of Power*. Although expectedly less compelling and nuanced than his wonderful biography, the vision, guiding principles and rich story of a very complex man, our third President, shine forth.



**Bring this article to Head House Books and get 50 per cent off the net proceeds from any purchase in stock or ordered online.**

**Richard De Wyngaert** is the proprietor of Society Hill's only local, independently owned bookstore, Head House Books, located at 619 S. 2nd Street.

A Martin Herring, Esquire  
Your Society Hill Neighbor

Wills, Estates, Trusts

Experienced and Reasonable  
Free Consultation  
215.568.9804

**Jan Stephano** ABR, CSR, CNE

*Lives, Knows,  
Sells Center City!*

*43 years  
your neighbor  
26 years  
your realtor*

*Call me for  
all of your  
real estate  
needs.*

215.922.3600 x219  
jstephano@plumerre.com  
www.janstephano.com



**Jan Stephano**  
215.922.3600 x219



**THE DAMON MICHELS TEAM**

*Specializing in The Main Line and Center City*



**IF YOU ARE LOOKING  
TO BUY OR SELL CALL  
DAMON MICHELS**  
cell: 610.731.9300  
office: 610.688.4310  
Damon@DamonMichels.com  
www.DamonMichels.com



**THE WILLIAM PENN HOUSE**  
1919 Chestnut Street  
Rittenhouse Square  
Efficiencies, 1, 2 and 3 Bedrooms

**BERKSHIRE  
HATHAWAY**  
HomeServices

OVER \$85 MILLION IN 2013 SALES! Fox & Roach, REALTORS®

**Elfant & Wissahickon**  
— REALTORS® —

CLAUDIA MCGILL 215.893.9920 claudia@elfantwissahickon.com

**Plumer & Associates, Inc.  
Realtors**

**Plumer**

Center City's largest  
independent Realtor.  
Serving Philadelphia since 1923.

**Residential,  
Commercial,  
and Investment  
Real Estate**

For a complete listing of Center City  
properties visit our website:  
www.plumerre.com

226 South Street, Philadelphia  
info@plumerre.com  
**215 922 4200**



**Our  
record  
speaks  
for  
itself.**

**Kathy, Patrick and the  
Conway Team**

**BERKSHIRE  
HATHAWAY**  
HomeServices  
conwayteam.com • kathy@conwayteam.com  
215-266-1537 • 215-627-6005  
Fox & Roach, REALTORS®

## SOUTH STREET HEADHOUSE DISTRICT

BY CLAIRE BATTEN

## Lights, Camera, Action!

*Historic Shambles Puts on Fashion Show Spectacular*

Yes. I confess. I love *Project Runway* and *America's Next Top Model*. Admit it, many of you do, too. I was therefore excited to receive a VIP, catwalk-side ticket for South Street Headhouse District's (SSHD) first **Fashion Under the Shambles**, which took place in September.

The Shambles is a perennially popular venue in the city for parties and soirees. It's not unusual to be heading to the dry cleaners on the weekend only to be serenaded by a string quartet warming up for a wedding. Yet, I was still blown away by this mid-week transformation.

In detail, the historic Shambles was turned into a sophisticated outside runway, under the direction of event planner Jessica Scott. Hundreds of tiny lights sparkled over high-top tables decorated with oversized black bows.

Emcee for the show was America's Next Top Model finalist, Cory Wade Hindorff, who incited the crowd to a frenzy of enthusiasm. DJ Patrick Feliciano provided high-octane music from KBM Productions. As the music pumped, the crowd cheered, clapped and hollered. Models in all shapes and sizes strutted their stuff on stage, sporting the widest array of clothes and makeup imaginable, ranging from vintage and punk rock to stylish, original, men's and women's wear. Indeed, there was something for all ages, incomes and tastes.

Elena Brennan, owner of shoe boutique Bus Stop on 4th Street, was one of the event's main

coordinators. She says, "We wanted to excite the rest of the city with the diversity and creativity of the South Street District's fashion scene. The show created unexpected and innovative collaborations between 21 boutiques and salons. And, most importantly, the audience loved it!"

Brennan, chair of SSHD's marketing committee, continues, "Historically, 4th Street was always the place to come for expert tailoring and to buy fashion fabrics and accessories. This event confirmed that our neighborhood is still a hotbed of art and fashion. The outdoor runway show was an absolutely brilliant evening."

The highlight of the evening for me — aside from the outré styling, which included a young man wearing four-inch heels — occurred once the show had ended. Mike Harris, Executive Director of SSHD, held his young daughter's hand as she sashayed, beaming, down the catwalk in her party dress. An event like no other, it brought together all walks of life under the arches of the Shambles in celebration of a shared passion — for fashion and creativity.

If you are interested in booking the Shambles for your very own private outdoor runway or event, contact Krystal at SSHD by calling 215-413-3713.



**Fashion blogger Style Maniac said, "This was the best Philadelphia Collection event I've attended!"**

**Conrad Booker, the renowned fashion stylist, was invited to showcase two haute couture looks, which were designed and handmade in Booker's Philadelphia studio. Booker designed these outfits from head to toe, including glasses, shoes, accessories and handbags.**



### Saturday, November 15th "Life in a Jar," The Irena Sendler Project

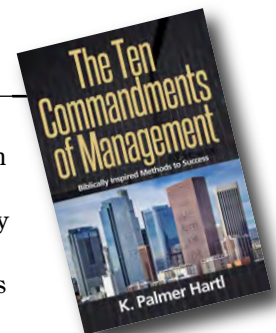
**National Museum of American Jewish History  
101 South Independence Mall East**

Historic Congregation B'nai Abraham presents the compelling story of three high school students from Kansas who uncovered the remarkable saga of Irena Sendler, a Polish Catholic social worker who rescued more than 2,500 Jewish children from the Warsaw Ghetto during the Holocaust. She buried the lists of the children's names in jars in the hopes of reuniting the children with their parents after WWII.

For more info, visit [phillyshul.com/events](http://phillyshul.com/events).

### The Ten Commandments of Management

K. Palmer Hartl is a long-time Society Hill resident, as well as an ordained Episcopalian priest, who has served as a priest associate at Christ Church since 1999. He has recently published *The Ten Commandments of Management*. Using proven business models mixed with appropriate Biblical references, this book provides the ten things managers need to know how to do to become more effective, productive and successful. The book ties together Palmer's two worlds — the church and his work as a consultant to management. The work is available in bookstores, as well as on Amazon.com.





**SMART  
RESPONSIVE  
EXPERIENCED**

**Bari Shor  
Real Estate  
MatchMaker**

Whether you're selling or buying a home in amazing Center City, Bari Shor cares and *delivers* for you.

I am your neighbor, let me be your Realtor,<sup>®</sup> too!



**BERKSHIRE  
HATHAWAY**  
HomeServices

Fox & Roach, REALTORS<sup>®</sup>

215-790-5678  
Barishor@aol.com  
215-546-0550 x 5678

Top 6% of all Realtors in Prudential Network Nationwide  
Accredited Luxury Home Specialist  
Diamond Award

I am a professional, full-time real estate agent as well as your neighbor.

■ **PAMELA D. LAWS**

ABR, ALHS, SRES, ASP



Like many of my clients, Society Hill is my home. I specialize in Center City because I love Philadelphia. Let me find the perfect townhome or condo for you!



**BERKSHIRE  
HATHAWAY** | Fox & Roach,  
HomeServices | REALTORS<sup>®</sup>

215.790.5688 pam.laws@prufoxroach.com  
WWW.PHILADELPHIAPROPERTIES.NET

An independently owned and operated member of the Prudential Real Estate Affiliates, Inc.



**In Center City Real Estate  
there's one name to call  
Izzy Sigman**

Named Philadelphia Magazine Five Star Professional Real Estate Agent 2014

*Put my 25 years of experience to work for you!  
As an experienced agent, I can help you navigate the market and negotiate the best deal.  
I will take the stress out of buying or selling your home.*

- Assisting empty nesters to downsize and sell their homes is my specialty
- I will be by your side from listing, to sale, to move-out
- Working with my comprehensive team of professionals, I am prepared to help you get your home ready today!

Call Izzy Sigman  
**Plumer**  
& Associates, Inc.  
Realtors  
226 South Street  
215-922-3600 x 228 Office  
215-806-6958 Mobile



**Hi Tech. Hi Touch.**

A Winning Combination —  
in Person and on the Web!



**Buying? Selling?**

Please call or email  
Rosemary Fluehr.

**Know someone who's  
Buying or Selling?**

Let me know. Referrals are  
the strength of my business.

**Rosemary Fluehr**

Associate Broker, GRI



**BERKSHIRE  
HATHAWAY**  
HomeServices  
Fox & Roach, REALTORS<sup>®</sup>

215-440-8195 – Direct  
215-627-6005 – Office  
215-514-9884 – Cell

rosemary.fluehr@foxroach.com  
www.rosemaryfluehr.com  
530 Walnut Street, Suite 260  
Philadelphia, PA 19106

2015 MEMBERSHIP DRIVE

BY MATT DEJULIO

# Support SHCA in 2015

We are excited this year that a growing list of area restaurants and businesses are providing special benefits to residents who show a current SHCA membership card. For instance, Bistro Romano, M restaurant and Positano Coast are offering 10 percent discounts on dining. Read more about this in the next issue of the *Reporter*.

If you enjoy strolling through beautiful Washington Square, walking on well-lit, graffiti-free streets and being kept well-informed, thanks to the *Reporter* and SHCA's weekly email blasts, then it behooves you to support the organization that provides these benefits.

The SHCA helps protect your real estate investment by funding many of our community improvement projects, as well as providing subsidies to neighbors who plant trees and fix their sidewalks. We help enhance your quality of life when we advocate on your behalf regarding zoning matters, real estate taxes, crime problems and traffic issues. All this, and more, is accomplished through the hard work of our dedicated board of directors, committee members and, most importantly, your membership dues!

You should have recently received a membership renewal notice in the mail. It's important to return your annual dues before December 31 to be eligible to win a gift certificates from one of two local restaurants. New members this year who joined after July 1 will be grandfathered through 2015.

Besides the gift certificate, we encourage your membership with several other perks. For instance, the highly desirable SHCA List of Contractors is only available to current members, and if you contribute at the \$100 Federal Friend level or above, you will receive a copy of Philadelphia Historical Commission's *Register of Buildings in the Society Hill Historic District*.

SHCA is happy to report that 100 new members decided to support our civic association this year, bringing total participation to 1,042! While this is slightly down from last year's all-time high by 34 non-renewals, it's ahead of 2012.

Email Matt DeJulio at mattdejulio@aol.com with questions or comments, which will be shared with board members representing every quadrant in our unique, historic neighborhood.

**Matt DeJulio** is a retired publishing executive. He has served SHCA as its administrator since 2001.



*Society Hill*  
CIVIC ASSOCIATION

## Membership Application

Name \_\_\_\_\_

Address \_\_\_\_\_ Apt. # \_\_\_\_\_

City, State, Zip \_\_\_\_\_

Home Phone \_\_\_\_\_

Work Phone \_\_\_\_\_

Email (print clearly) \_\_\_\_\_

IMPORTANT: Today, most everyone communicates via email. Please be sure that we have your current email address – so that you can receive important updates between publication of our community newsletter. All SHCA emails will be judiciously screened, and rarely will we send emails more than once a week. Nor will we share your email address with anyone else. This convenient, 21st-century system helps save our civic association postage costs, while keeping you regularly informed.

**Residential Memberships**

- \$ 50 Basic Household Membership
- \$ 40 Senior/Student/Single
- \$ 100 Federal Friend
- \$ 150 Georgian Grantor
- \$ 300 Jefferson Benefactor
- \$ 500 Washington Benefactor
- \$ 1,000 Benjamin Franklin Benefactor

**Business Memberships**

- \$ 100 Institutions – 5+ employees
- \$ 60 Institutions – fewer than 5 employees

**Additional Contributions**

\$ \_\_\_\_\_ Washington Square Beautification      \$ \_\_\_\_\_ Franklin Lights  
 \$ \_\_\_\_\_ Sidewalk Cleaning/Graffiti Removal      \$ \_\_\_\_\_ Tree Tenders  
 \$ \_\_\_\_\_ Zoning and Historic Preservation      \$ \_\_\_\_\_ McCall School

Total Enclosed \$ \_\_\_\_\_

Charge VISA/MasterCard:

Number \_\_\_\_\_ Exp Date \_\_\_\_\_

Signature \_\_\_\_\_

The following topics are of special interest to me. I welcome receipt of email updates on these topics.

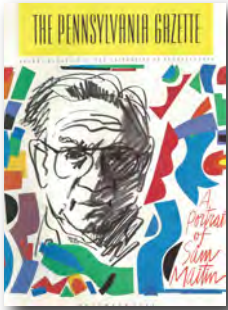
- Clean-Up Day       Washington Square       Zoning & Historic Preservation
- Franklin Lights       Social Events       Fundraising
- Dilworth House       Property Taxes       Local Crime
- Reporter*       Casino Issues       Incidents & Alerts

Please return completed application to:  
**Society Hill Civic Association**, P.O. Box 63503, Philadelphia, PA 19147

## NOTEWORTHY NEIGHBORS IN MY OWN BACKYARD

BY JANE BIBERMAN

## Lilyan Maitin: An Artist's Wife Reflects



Sam Maitin, 1928-2004

It's been some years since beloved Philadelphia artist Sam Maitin died, a fact that makes his widow sad. But the home that they shared is alive with color and memories. Sam's bright paintings, collages, dimensional art, bold anti-war posters and prints enliven the house he bought in 1960, long before the neighborhood was fashionable.

"It hadn't been lived in during the previous 12 years," Lilyan relates. "Lucky for us, his brother, Irv, was the architect. We were married in Sam's studio. Our main worry was that the old floor might cave in. Relatives worried that it wasn't a safe neighborhood. It just never occurred to either of us. The area was racially mixed, had ethnic diversity and was an interesting part of the city. Mayor Richardson Dilworth lived on Washington Square, and he encouraged people to move in and redevelop the area. We were among the pioneers, living alongside the old-timers of many backgrounds."

In those days, the area was called Southwark. "Sam voted to keep the name and was angry that it became Society Hill, which he thought was pretentious," says Lilyan. "In the mid-70's, local landlords raised the rents and tried to drive out families who had lived here their whole lives. Along with a friend, pediatrician Len Bachman, Sam and several others organized a group called Save Our Neighbors. After a long battle with the Philadelphia Redevelopment Authority, the city was ordered to build low-income housing on the last remaining lots in Society Hill."

He was often called "Good Neighbor Sam" because of his numerous acts of kindness. Lilyan fondly remembers her husband's many charitable acts and community activism. "Like Tolstoy and Sam's father, who was a Russian immigrant, Sam believed that we were put on earth primarily to help other human beings. He often made artworks to promote Philadelphia non-profits — ones he felt to be worthy organizations. He worked hard on behalf of SANE, the National Committee for a Sane Nuclear Environment."

Sam's uplifting and optimistic art can be found throughout the city, where its presence is cheerful and heartening. Huge multi-color murals and sculptural constructions enhance a branch of the Free Library, the entrance of Academy House, the Annenberg School of Communications, the Christian Association on Penn's campus,

Abington Hospital, the YM-YWHA, Children's Hospital, Temple University Dental School, Lincoln High School, the Please Touch Museum and the Fleisher Art Memorial, to name but a dozen. "That's why people considered Sam a Philadelphia institution himself," laughs Lilyan.

Lilyan had some training herself as an artist and, as needed, spent time in the studio with Sam whenever she wasn't working as an administrator in the art department at then-named Smith, Kline & French Laboratories.

"Sam also worked on behalf of other artists," she notes. "One of his major achievements was keeping the Louis I. Kahn Collection intact. Others wanted to split it up, but Sam felt strongly that it should be complete and remain in Philadelphia, and he worked arduously and passionately for several years to save it. Thanks to Sam, the Kahn Collection is now owned by the Commonwealth of Pennsylvania and housed at the University of Pennsylvania Architectural Archives, where scholars from around the world can see it."

Sam's own papers, memorabilia and other objects related to his art career and activism, are included in the Archives of American Art at the Smithsonian in Washington. His work may be found at the Philadelphia Museum of Art, the James A. Michener Museum in Doylestown and the Woodmere Art Museum in Chestnut Hill, as well as museums nationally and internationally, including the Tate Modern in London.

"My children, Izak and Ani, and my five grandchildren often visit," says Lilyan. "The oldest loved their Zayda, and Sam encouraged them to use his art materials. The two youngest, who were born after he died, are named after him. They loved his humor, exuberance and exciting stories."



Nanny Lily and Sammy.

For those of us who were lucky enough to know Sam, he will always remain a neighborhood treasure.

**Jane Biberman**, former editor of *Inside Magazine*, is a freelance writer who has contributed to a variety of publications.



**YOU'RE MAKING MOVES. LET US DO THE WORK.**



We love Philadelphia.  
 We know the neighborhoods.  
 Whether you're buying, selling or just looking, we can help!  
 For over 27 years, we've been honored to work with the best clients in the best city in the whole world.  
 Let's get started today.

Call us or visit our website. We can't wait to hear from you!

Mike McCann "The Real Estate Man" and The McCann Team

**BERKSHIRE HATHAWAY**  
 HomeServices

Fox & Roach, REALTORS

Direct: 215.440.8345

[www.McCannTeam.com](http://www.McCannTeam.com)

Office: 215.627.6005

## Mark J. Bojanowski / TEAM MJB

The Finest Real Estate in the World!

**Kurfiss Sotheby's International Realty**



1901 Walnut St 16A,  
 Philadelphia, PA 19103  
 4 Br / 4.5 Ba / 4,500 sq. ft.  
**\$2,499,000.00**



524 Lombard St D,  
 Philadelphia, PA 19147  
 3 Br / 2.5 Ba / 1,536 sq. ft.  
**\$639,000 .00**



237-47 S 18th St 18C,  
 Philadelphia, PA 19103  
 4 Br / 4.5 Ba / 3,000 sq. ft.  
**\$2,200,000.00**



208-10 Rex Ave,  
 Philadelphia, PA 19118  
 9 Br / 5.2 Ba / 9,864 sq. ft.  
**\$1,750,000.00**



1631-33 Locust St,  
 Philadelphia, PA 19103  
 Retail / Office Space  
**\$4,199,000.00**



106-12 Gay St,  
 Philadelphia, PA 19147  
 Commercial w/ 12K sq ft  
**\$1,599,000.00**

### Sold / Pending Properties

2040 Pine St, Philadelphia, PA	\$1,325,000
1138 South St B, Philadelphia, PA	\$ 270,000
223 Pine St, Philadelphia, PA	\$ 860,000
520 Montrose St, Philadelphia, PA	\$ 599,000

**Mark J Bojanowski 215.704.3994**  
 226 West Rittenhouse Square, Suite 102  
 Philadelphia, Pennsylvania 19103  
 Phone: 215.735.2225 office (Ask for Mark)

**Toll Brothers**  
CITY LIVING®

Classic Luxury. Convenient Location.  
The Rest Is History.



# 410 AT Society Hill

## New Homes Just Released

- Spacious 1-4 bedroom condominiums
- 24-hour concierge
- Garage parking included
- Limited-time pre-construction pricing



215-592-8655

410SocietyHill.com/OHT

Open Daily 11-6. Sales Gallery is located at  
513 South 2nd Street, Philadelphia, PA 19147

Brokers Welcome. Prices Subject To Change Without Notice. Photos are images only and should not be relied upon to confirm applicable features. This Is Not An Offering Where Prohibited By Law.



www.edwardjones.com



## Are you invested properly? Get a second opinion.



**David Rucki**  
Financial Advisor

313 Spruce St  
Philadelphia, PA 19106  
215-922-2906

**Edward Jones**  
MAKING SENSE OF INVESTING

Member SIPC



- Delivered free to your door
- Produced by your neighbors
- Supported by local advertisers
- Keeping you informed about our community

www.societyhillcivic.org



# BANK LOCAL



Philly's most advanced neighborhood bank.

**Christopher P. McGill, President & CEO**

- Rates subject to change at any time.
- Annual Percentage Yield effective as of 9/22/2014.
- Fees may reduce earnings.
- A penalty may be imposed for early withdrawal prior to maturity.
- Individual Retirement Account (IRA): Additional IRS tax penalty may apply. Please consult your tax professional.



## LADDER YOUR CDs

Term	Annual Percentage Yield	Minimum Balance Requirement
60 mo	2.00 %	\$500 minimum
48 mo	2.00 %	\$500 minimum
36 mo	1.50 %	\$500 minimum
24 mo	1.25 %	\$500 minimum
12 mo	1.05 %	\$500 minimum

EAST FALLS | ROXBOROUGH | OLD CITY

267.295.6420 | EastRiverBank.com

**AD Allan Domb**  
Philadelphia's Largest Luxury Condominium REALTOR®

1845 Walnut Street, Suite 2200  
Philadelphia, PA 19103  
215-545-1500  
www.allandomb.com

### Allan Domb Real Estate PRESENTS **The Bank Building** 421 CHESTNUT STREET



#### Opportunity to Create a Custom Home Overlooking Independence Hall

Once-in-a-lifetime opportunity to create a custom home from an entire penthouse floor of raw space overlooking historic Independence Hall. The residence boasts an 851 square foot private terrace; breathtaking city views to the east, south

and west; and the potential to be one of the grandest homes in the City of Philadelphia. This floor plan provides one idea of how the penthouse can be designed. 8,383 sf **\$5,000,000**