



SOCIETY HILL

Reporter

May/June 2015

The Newsletter
of The Society Hill
Civic Association

www.societyhillcivic.org

37th Annual House and Garden Tour

Benefits Society Hill Civic Association

**Sunday, May 17
1 to 5 p.m.**



Put on your most comfortable shoes and join us on Sunday, May 17, for the 37th Annual Society Hill Open House and Garden Tour. This much anticipated event attracts visitors not only from Center City, but also from the tri-state area and beyond. Each year, we offer a new selection of eight exceptional private homes; two large, private gardens; a museum house; and a historic house of worship — all located in one of our nation's premier communities.

The array of properties varies in style and decorating from the 18th and 19th centuries to the most contemporary. Open House co-organizers Martha Levine and Linda Skale suggest that the tour offers a perfect chance to get ideas for your own interior décor and gardening projects.

Tour and Dining with Discounts: After the tour, enjoy dinner at any of four local restaurants offering a 15 percent discount exclusively for ticket holders: Bistro Romano, Bridget Foy's, La Fournò Ristorante-Trattoria or Positano Coast.

Sponsored by the Society Hill Civic Association (SHCA), all profits are used for neighborhood improvement and beautification projects. We hope you will attend for a fun day and a good cause.

Tickets are now on sale: \$30 in advance and \$35 at the door. Advance purchases are encouraged. To buy a ticket, receive a brochure or get more information, contact SHCA at 215-629-1288, or email mattdejulio@aol.com. Tickets can also be purchased on the day of the tour at Old Pine Community Center, 401 Lombard Street. Restrooms will be available and light refreshments will be served. House-sitting hosts will receive one complimentary ticket for volunteering two hours of time. If interested, contact Martha Levine at marthalev6@gmail.com or 215-629-0727.

We extend our thanks to those neighbors who have graciously agreed to share their homes and gardens.

For more information, go to our website: www.societyhillcivic.org and click on the link for the Society Hill Open House Tour.

2015 BOARD OF DIRECTORS ELECTION

The SHCA will conduct its annual election of Board Directors at the May 20 General Membership Meeting. See page 3 for the 2015 slate of officers. Although there is no speaker, neighbors are encouraged to come meet our new Board members. The meeting will take place at Pennsylvania Hospital's Zubrow Auditorium, located on the first floor inside the main entrance at 8th Street near Spruce at 7 p.m. All current members interested in issues pertaining to Society Hill are welcome at our monthly Board Meeting, starting at 5:45 p.m. in the Hospital's Great Court Conference Room.

Note the changes in time from past meetings.

WEDNESDAY

May
20

5:45 p.m.

Board of Directors Meeting

Pennsylvania Great Court Conference Room
All SHCA members are welcome.

7:00 p.m.

General Membership Meeting

Pennsylvania Hospital Zubrow Auditorium
All neighborhood residents are invited to attend.

Topic:

SHCA Board Election

MARK YOUR CALENDAR

Society Hill Civic Association Meetings
Wednesday, May 20, 2015

**Pennsylvania Hospital
8th and Spruce Streets**

RIVER RINK ROLLER SKATING



Philadelphia's only outdoor roller-skating rink opens Memorial Day Weekend at Penn's Landing. Fun activity for kids, nostalgia for those who used to strap on roller skates when they were kids.



SOCIETY HILL

Reporter



mw designgroupllc.com

267.872.8814

Managing Editor

Sandra Rothman

Columnists

Marilyn Appel
 Claire Batten
 Jane Biberman
 Matt DeJulio
 Martha Levine
 Jim Murphy
 Keri White

Contributors

Fred Manfred
 Lisa Kelly
 Restoration Hardware
 Betty van de Rijn
 Katy Wich

Photographer

Bonnie Halda

Graphic Design

judy@parallel-design.com

Press Release Liaison

c/o Matt DeJulio
 mattdejulio@aol.com

Advertising Manager

Lenore Hardy
 Hardy@drexel.edu

Submission Deadlines

July/August Issue
 Advertising: June 1
 Editorial: June 1

Society Hill

Civic Association

P. O. Box 63503
 Philadelphia, PA 19147
 Tel. 215-629-1288

Website

Find past issues in color
 at www.societyhillcivic.org.

Submissions

If you have news that would be of interest to Society Hillers, email Sandra Rothman at sandra.rothman@aol.com. Materials must be submitted in writing and include the name of a contact person. Edited submissions will be considered for publication if space permits. Letters to the Editor must be signed, with contact information.

SHCA Mission Statement

The aims and purposes of SHCA are to promote the improvement of the Society Hill area of Philadelphia, including its cultural, educational and civic activities, and the preservation and restoration of its historic buildings; to represent the residents of Society Hill in matters affecting the City of Philadelphia generally and Society Hill in particular; and to interpret the value and significance of Society Hill to the public.

SHCA Board Officers and Directors

President

Robert Curley

First Vice President

Jim Moss

Second Vice President

Martha Levine

Recording Secretary

Marlene Molinoff

Treasurer

Marc Feldman

Directors-at-Large

George Dowdall,
 Diane Harrison,
 Bill Landy, Sissie Lipton,
 Fred Manfred, Mary Purcell,
 Vijay Verma, Kim Williams

Northeast Quadrant

2015 Heather Steiner
 2016 Lisa Unger
 2017 George Kelley

Northwest Quadrant

2015 Mary Tracy
 2016 Amy DeMarco
 2017 Norman Lieberman

Southeast Quadrant

2015 Laura Temple
 2016 Jeff Berry
 2017 Barbara Gelman

Southwest Quadrant

2015 Marilyn Appel
 2016 Daniel Horowitz
 2017 Joan Kleinbard

parallel
design

Find our designs online.

BeyondTheLibertyBell.org
Parallel-Design.com

215-476-4040

Logos
 Websites
 Banners
 Newsletters
 Books
 The Award-Winning Society Hill
 Brochures
 Invitations
Reporter!

P R E S I D E N T ' S M E S S A G E

Happy Spring! Thanks to all neighbors who attended the mayoral forum at Pennsylvania Hospital's auditorium on March 18. The forum was the first time the Society Hill, Queen Village, Wash West and Bella Vista Civic Associations jointly sponsored an East-of-Broad-Street event. I received a lot of positive feedback. Those in attendance were introduced to mayoral candidates Melissa Murray Bailey, Doug Oliver, Anthony Williams, Lynne Abraham and James Kenney, who answered questions about their plans for the city's future. Milton Street, Nelson Diaz and the two unannounced "independent candidates" were invited, but did not appear.

The spirited discussion from each candidate proved much more interesting than the 30-second sound bites we all will unfortunately be hearing between now and the election. The five mayoral candidates who participated in the Civic Associations' forum came to Pennsylvania Hospital's auditorium because they know residents in this part of the city will vote on May 19.

In the March/April *Reporter*, I discussed the possibility of additional parking in the neighborhood. So far, approximately 25 neighbors expressed their interest in leasing parking spaces on Front Street. Last month, the Interstate Land Management Corporation (ILMAC) Board responded positively to SHCA's proposal to lease the Front Street parking spaces.

Board Member Kim Williams and I met with the Parkway Corporation to discuss arrangements for converting the Front Street metered parking lot currently managed by the Philadelphia Parking Authority. Parkway Corporation is interested in partnering with the Society Hill Civic Association and converting the parking lot to leased spaces for Society Hill neighbors. At this point, ILMAC has, or is in the process of completing, an appraisal to determine the fair market value of the leased spaces.

Once the fair market value is determined, lease rates will be negotiated. We hope to offer parking leases to neighborhood residents and also provide revenue to the Civic Association for neighborhood improvements. The Queen Village Neighbors' Association has successfully done this for many years with its community

supported ILMAC parking lots on Front Street and under I-95. If you are considering leasing a parking spot at the site, contact Matt DeJulio, mattdejulio@aol.com or 215-629-1288.

Please note on your calendars that the annual Society Hill Spring Clean-Up Day is scheduled for May 8 and 9. Follow the weekly email blast that SHCA Administrator, Matt DeJulio, puts out every Friday for the latest details. Also, discuss how your block will do its part with your block coordinator. Long-term residents know the drill for these semi-annual events. Move cars from one side of the street to the other and push debris to the open side of the street, where the Streets Department's sweeper trucks can collect it. Then, move the cars back after the trucks finish. If you're going to be away on Saturday, May 9, leave your car keys with a trusted neighbor so the Philadelphia Streets Department employees can do their job. The Spring Clean-Up is much easier than the fall. Society Hill should be looking great for the May 17 Open House Tour if everyone does their part.

All neighborhood residents are encouraged to participate. Anyone interested in volunteering to help out the Civic Association that day should contact either Matt DeJulio or me at bobcurley@gmail.com. Volunteers can work at Saint Peter's School parking lot,

where paper shredding, electronic recycling and Cradles to Crayons collections will take place. Outside the SuperFresh store on 5th Street, volunteers will distribute paper bags and brooms. Additionally, it would be great to add volunteers to travel the streets and sweep out the trash and debris on the many sidewalks in front of absentee landlords' properties or vacationing residents' homes.



Bob Curley,
SHCA President

Bob Curley has been a Board member for six years, during which he co-coordinated Clean-Up Day and participated with Tree Tenders. He is a partner in the law firm of O'Donoghue & O'Donoghue LLP.

SHCA BOARD NOMINATIONS

SHCA will conduct its annual election of Board Directors at the May 20 General Membership Meeting. The Nominating Committee proposes the following names for consideration:

- | | |
|---|---|
| President
Robert Curley | Quadrant Directors
N.E. 2018 Robert Kramer
N.W. 2018 Mary Tracy
S.W. 2018 Steve Zettler
S.E. 2018 vacant |
| First Vice President
Kim Williams | Hopkinson House
Diane Rossheim |
| Second Vice President
Martha Levine | Independence Place
Richard Salkowitz |
| Treasurer
Marc Feldman | Society Hill Towers
Lorna Katz Lawson |
| Directors-at-Large
Georgine Atacan, George Dowdall, Diane Harrison, Sissie Lipton, Fred Manfred, Mary Purcell, Heather Steiner, Vijay Verma | St. James Court
(non-voting)
Elizabeth Shuttleworth |

In This Issue...

Page 11
This Old House
Spring Maintenance Tips

Page 13
Exploring the City
Magnificent Masonic Temple

Page 15
Headhouse Farmers' Market
Back for 8th Season

Page 19
Philly Food Lovers
The Best of the Brunch

Page 21
South St. Headhouse District
Garden of Eden Market

Page 25
Safe and Sound: Don't
Be a Soft Target for Crime

Page 29
Membership Update: Meet
Shawn and Stanton Myerson

Page 30
Nifty Neighbors
The Geator with the Heater



Philadelphia Gardens, Inc.

GARDEN DESIGN + INSTALLATION
+ NATIVE HABITAT INSTALLATION by Toni Ann Flanigan
215.951.9193 // www.philadelphiagardens.com



Megan Sees An Allergist.



Katie Does Not.

Don't Let Allergies Ruin Your Special Day.

Weddings, proms, graduations and other special occasions often occur during peak allergy season.

See the fellowship trained, board certified allergists of Allergy & Asthma SpecialistsSM to feel and look your very best.



1-800-86COUGH

AllergyAndAsthmaWellness.com

Say Cheese!

Fresh and LOCAL Every Day!

READING TERMINAL MARKET since 1893

READING TERMINAL MARKET
MON-SAT 8-6 & SUN 9-5 • \$4/HR PARKING • 12TH & ARCH STREETS • 215-922-2317
www.readingterminalmarket.org

SATURDAY, MAY 9

Spring Clean-Up Day

Join your neighbors on Saturday, May 9, for SHCA's annual Spring Clean-Up Day. Philadelphia's winter was long and cold; there's a lot of sodden trash and debris that needs our attention! It's also a perfect time to check sidewalk bricks and tree pit enclosures for necessary repairs.

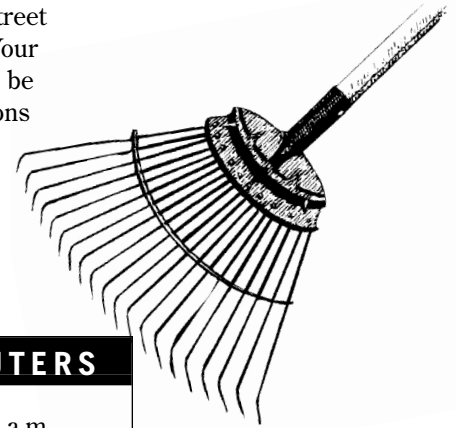
Leaves and rubbish from sidewalks, walkways, tree pits and alleyways need to be swept into the streets before the city's sweeper trucks arrive between 8 a.m. and noon. All streets will be swept from Front to 8th and Walnut to Lombard Streets, not including Walnut Street. To accommodate synagogue services, the 300 to 500 blocks of both Spruce and Lombard Streets will be swept by 8:30 a.m.

Consider getting a head start with your cleaning on Friday evening, as the sweeper trucks start as early as 7:30 a.m. on Saturday morning.

Remember, wherever posted, cars must be moved to the opposite side of the street after 6 p.m. on Friday night or else be ticketed on Saturday morning, beginning at 8 a.m. There will be no parking on either side of the 300 to 400 blocks of Front Street. This also applies to the 200 to 300 blocks of South 2nd Street and Lawrence Court.



SHCA's Clean-Up Day volunteers will provide trash bags at the South 5th Street SuperFresh, from 8 a.m. until noon. Your bagged street leaves and litter should be left by 12 p.m. at the major intersections of Locust, Spruce, Pine and Lombard Streets, as well as Three Bears Park. Bags are for street leaves and litter only, no household trash!



RECYCLING EVERYTHING FROM CRADLES TO COMPUTERS

SHCA is again sponsoring electronic recycling and paper shredding services for the convenience of Society Hill residents only, as well as a drop-off box for Cradles to Crayons. This non-profit organization passes on your donations of gently used children's clothing, books and school supplies to low-income and homeless families in the area.



Both the box and recycling trucks will be parked in St. Peter's School parking

lot, 3rd and Lombard Streets, from 10 a.m. to 1 p.m. or until capacity is reached.

Electronic recycling will take anything with a plug, except old lead-based or projection televisions or old CRT computer monitors. There will, however, be a \$20 charge for each TV or computer monitor. No large appliances like refrigerators or washing machines.

If you use this special service and aren't yet an SHCA member, please consider joining our civic association. Simply fill out the form on page 29 or online at societyhillcivic.org. Any questions? Call Matt DeJulio at 215-629-1288.



SONOS

ENJOY ALL OF YOUR MUSIC,
IN EVERY ROOM OF YOUR HOME,
WIRELESSLY.

No wires and no drilling.
Ask for a FREE in home consultation.



Apple Specialist

116 S. 13th Street
Philadelphia, PA
215-599-0794
springboardmedia.com



All Gloria Dei's venerable trees remained standing in Hurricane Sandy, preserving the historic graves below.

HISTORIC TREES UNHURT IN HURRICANE SANDY

... Thanks to Liberty Tree & Landscape Management

When Hurricane Sandy pummeled the city in late October, 2012, not one of the many 200+-year-old trees at Gloria Dei Church on Columbus Blvd. came down. Pastor Joy Segal credits that feat to the outstanding work of Liberty Tree and Landscape Management.

See why so many people recommend Liberty Tree on Angie's List. *Your satisfaction is guaranteed!*

Some Other Liberty Tree Clients:

- Pennsylvania Hospital*
- Elfreth's Alley*
- Rittenhouse Square*
- National Park Service*
- Washington Square*
- Bartram's Garden*
- Philadelphia Cricket Club*



215. 886. 6111 | Oreland, Pa
 215. 725. 3637 | Philadelphia, Pa
 215. 572. 6937 | Fax
www.libertytreecare.com

Mike Duffy
 Certified Arborist
 PD-1766A



OCI

Tree and Landscape

for all of Philadelphia's outdoor needs

TREE + LANDSCAPE + MASONRY

267.712.9624

ocitreeandlandscape.com



COMMUNICATION MADE EASY



ON DEMAND PRINTING SOLUTIONS

Media Copy is a full service digital printing company with offices in Center City Philadelphia, and the suburbs. State of the art technology, extraordinary customer service and attention to detail place us apart from the competition. Our infrastructure allows us to provide our customers with high quality products in a cost effective fashion. From conception to completion, the basic to the complex, we are on the job with the personal attention you should expect.

Philadelphia Location:
 1310 Sansom Street · Philadelphia, PA 19107
 phone: 215.717.5151 · fax: 215.717.7400

Media Location:
 11 East State Street · Media, PA 19063
 phone: 610.566.8499 · fax: 610.566.4513

www.mediacopyonline.com

Z O N I N G A N D H I S T O R I C P R E S E R V A T I O N

BY LORNA KATZ-LAWSON

3-D Billboards a Done Deal

SHCA's Zoning and Historic Preservation (ZHP) Committee monitors residential and commercial applications for zoning variances. It then reports to the Board on issues that affect the integrity of our historic neighborhood, including city legislation.

Bill #140906

Society Hill joined the Crosstown Coalition, Scenic America, Central Delaware Advocacy Group and others in opposing Bill #140906, introduced by our Councilman Mark Squilla. This legislation would create a special overlay district for the erection of two enormous, three-dimensional digital signs that can be full motion, flashing, intermittent and sound-generating.

The locations for the two signs are 12th Street between Filbert and Arch and at Race Street, in front of the Philadelphia Convention Center. While the signs generate funding for the Convention Center and the Reading Terminal Market among other non-profits handpicked by the Councilman, the amount of money these organizations will receive is a pittance compared to the sign developer's take.

The bill in its final form, which was approved by a vote of 13 to 3, does not regulate brightness or sound levels for its audio projection. It usurps the public sidewalk and upstages everything around it, thus destroying the character of its surrounding neighborhood. It also presents a strong distraction for drivers in areas with heavy vehicular and pedestrian traffic. Because these signs utilize an outrageous amount of energy, the bill is an insult to the new zoning code, which intended to brand Philadelphia as a "sustainable" city. The signs will operate from 6 a.m. to midnight with 70 percent of its program time given to advertising.

Thanks to all Society Hill residents who called Council representatives and attended the standing-room-only Council session to express their views on the bill. Most, however, were not allowed to exercise their legal right to speak because Council President Clarke initiated, and Council unanimously approved, dispensing with "the rules," thus limiting the number of speakers to only five people for each side of the issue.

Update

We learned, as we went to press, that Philadelphia Mayor Michael Nutter will not veto these billboards, after negotiating for modifications to how the displays will be regulated. The amendments will give the Streets Department oversight of any display not under Department of Transportation jurisdiction. Also, the Planning Commission will be required to make recommendations to the Art Commission on all proposals.

Dilworth House

The Dilworth House was the home of former Philadelphia Mayor Richardson Dilworth and his wife. Located at 223-225 S. 6th Street, across from Washington Square, its construction is considered by some to have started the Society Hill revitalization in the mid-20th century. Since 2015, the current owners, John and Mary Turchi, have been seeking permits for the renovation and development of the historically designated building.

As of this report, there has not been a decision made by the state court in the latest and last appeal. According to Paul Boni, representing Society Hill, a decision should soon be forthcoming. Even if the judgment favors the developer, there would be future zoning obstacles to overcome for the project to proceed.

Lorna Katz-Lawson is a practicing architect with John Lawson Architects. She has been a Society Hill resident since 1973 and currently chairs SHCA's Zoning and Historic Preservation Committee.



LANDSCAPE DESIGN
INSTALLATION
CONSULTATION

SEASONAL PLANTERS
ROOF TOP GARDENS
GARDEN LIGHTING

MATT@YARDLS.COM
215 821 5880

*...designing and building
fine gardens for 20+ years*



The CENTER for GROWTH

psychological counseling • therapy • support groups

**Is Your Life Unmanageable?
Or, Are You Simply Seeking A Coach
To Help You Make Better Decisions?
We Can Help.**

- Individual Therapy
- Couples Therapy
- Family Therapy
- Play Therapy
- Parenting Support Group

Present this ad at your 1st session & your 2nd session is FREE.

233 S. 6th Street, Suite C33
Philadelphia, PA 19106
www.therapyinphiladelphia.com • (267) 324-9564

ADORNAMENTI

1106 Pine Street
215.922.2722

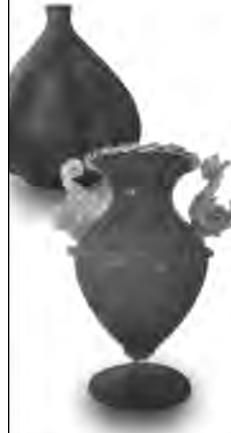
Collection of Art-To-Wear Jewelry



SHOW OF HANDS

1006 Pine Street
215-592-4010

Collection of Mid-Century Murano Glass and Contemporary Crafts



We contribute to Welcome Basket.
We are located on Historic Antique Row.

www.edwardjones.com



Are you invested properly? Get a second opinion.



David Rucki
Financial Advisor
313 Spruce St
Philadelphia, PA 19106
215-922-2906

Edward Jones
MAKING SENSE OF INVESTING

Member SIPC

ORGANIZING, ETC. ELLEN TREU COHEN

AS AN EXPERIENCED ORGANIZER & INTERIOR DECORATOR,
I CAN HELP YOU:

- EVALUATE YOUR NEEDS
- ORGANIZE PAPERS AND POSSESSIONS
- ELIMINATE STRESSFUL CLUTTER

...and more!

267-273-1597

ELLEN@ETCORGANIZING.COM
ETCORGANIZING.COM



'FIX THE BRIX'

BY MARTHA LEVINE

Winter's Dangerous Upheaval

This winter's repeated freezing and thawing took a toll on our sidewalks, causing bricks to lift. Over the years, tree roots have also forced pavers to move. Upheaved bricks result in dangerous, uneven sidewalks. Countless pedestrians have tripped and fallen in the past, some sustaining serious injuries. And guess what? You, the homeowner, are liable for any injuries suffered on your sidewalk.

The "Fix the Brix" program is an easy solution for this serious problem. SHCA offers a subsidy to any participating homeowner — a 40 percent reimbursement, capped at \$300 per household.

Society Hill List of Contractors

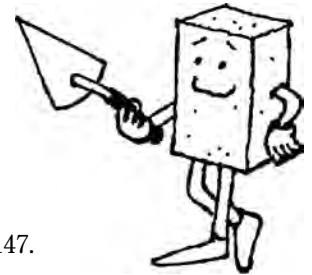
Current SHCA members may request a copy of the updated Society Hill List of Contractors — all highly recommended by neighbors.

Please contact Martha Levine 215-629-0727 or email: marthalev6@gmail.com.

It's easier than you might imagine, just follow these steps to fix your brix:

- Send us a photo of work to be done.
- Get several estimates from qualified masons and/or arborists if appropriate; we can email you a suggested list. Sometimes an arborist is needed to trim tree roots.
- Choose a mason that fits your budget.
- Have the work done to your satisfaction.
- Make copies of the invoice. Keep the original for yourself, and mail a copy, along with a photo of finished project, to: SHCA, P.O. Box 63503, Philadelphia, PA 19147.
- Receive a check within a few weeks for 40 percent of the bill, up to \$300.

For more information or to obtain a list of masons and arborists, contact me at marthalev6@gmail.com or 215-629-0727.



Rick the Brick

LIONESS ANTIQUES INC
 JEWELERS since 1976

Diamonds
 Engagement Rings
 Custom Designs
 Appraisals
 Repairs

520-A S. 2ND STREET
 Between Wawa & RiteAID 215.592.4099

QUEEN VILLAGE FAMILY DENTISTRY

JEFF CABOT, DMD

WWW.QUEENVILLAGEFAMILYDENTISTRY.COM

215-925-7330

Intelligent Exercise with Profound Results!

New client special:
 Three one-hour private sessions for \$125.00 at our fully equipped Center City studio at 9th and Spruce Streets.

PilatesByPamela

Stott Pilates Certified Instructor
 267-519-3639
 pilatesbypamela@gmail.com

www.pilatesbypamela.com

COSMOS FINE NAIL SALON

PHILADELPHIA'S SALON FOR MEN & WOMEN
 [NAILS ~ WAXING ~ MASSAGE]

1204 walnut street (215) 627 - 1020 mon-wed: 930a - 700p thurs-fri: 930a - 800p sat: 930a - 600p sun: 930a - 600p	1308 sansom street (215) 545 - 5456 mon-wed: 930a - 700p thurs-fri: 930a - 700p sat: 930a - 600p sun: closed
--	---

RESERVATIONS RECOMMENDED

**American Red Cross Certification Classes
CPR/AED, First Aid, Emergency Oxygen &
Aquatics Training**



*In-Home, Corporate, Gyms,
Doctors Offices, Houses of
Worship & Community Centers*

Candice Chachkin
info@savingcerts.com
215.592.6456

God put the wiggle in children!

Join us for songs, stories, and communion at an informal worship service designed specifically for children and their families.

Sundays at 9 a.m. at St. Peter's School.

Visit www.stpetersphila.org/children-youth.

Third and Pine Streets
215-925-5968 | www.stpetersphila.org



R. Chobert Decorating Co.

*Painting/Wallcovering
Interior/Exterior
Creating Beauty Since 1967*

Rupert Chobert

641 Reed Street
215.389.7788 TEL
267.977.7443 CELL
215.755.6655 FAX



Old Pine Street Church

Established 1768



Where History, Faith,
Message, Music &
Fellowship intersect at

412 Pine Street

Sunday Worship
10:30am

215-925-8051
www.oldpine.org

Complimentary Consultation

By Peter McFarland, Certified Arborist, MA-0164A

Call our office at **215-844-TREE** to make an appointment for a consultation to review your property.

We offer a complete line of services to care for your property.

Tree & Shrub Healthcare

- Custom Tree Pruning
- Tree Removal
- Cabling & Bracing
- Insect & Disease Management

Landscaping

- Planting Trees
- Planting Gardens
- Custom Shrub Pruning

Sidewalks

- Brick Replacement



McFARLAND
Tree & Landscape Services

www.mcfarlandtree.com



THIS OLD HOUSE

BY CHUCK GROSHONG AND DANIELLE GROSHONG-KEPERLING

10 Spring Maintenance Tips

Spring is finally here, and it's time to look around your house to see if winter weather has taken its toll. We'll soon be lighting our grills and relaxing with friends and family. But, before you can do that, there's much work to be done.

In the 19th century, before vacuums came into common use, early spring was a time to open windows and sweep homes from "top to bottom" to herald the coming of warmer weather. Your spring maintenance projects can be handled the same way — from roof to foundation.

So, let's take a walk around your property to make a detailed list of needed repairs. Here are 10 useful tips to get your house ready for spring:

1 Inspect your roof. Harsh winter weather can cause roof shingles to become lost or damaged. Shingles that are cracked, buckled, loose or missing granules must be replaced. A qualified roofer should check and repair flashing around plumbing vents, skylights and chimneys.

2 Examine your chimney. Look for signs of exterior damage and replace any loose or missing bricks. Have the flue cleaned and inspected by a certified chimney sweep.

3 Check for loose, leaky or clogged gutters. Clear leaves, sticks, muck and other debris by flushing the gutters with water. Contact a professional gutter cleaner if you are unable to do so yourself. Improper drainage can lead to water in the basement or crawl space. Make sure downspouts are also free of debris and that they drain away from the foundation.

4 Look for loose or damaged siding. Once you have assessed the need for repairs, spring is also a good time to clean your siding with soap and water from the garden hose.

5 Fill low areas in your yard with compacted soil. This is especially true near the house. Spring rains can cause flooding, which can lead to foundation damage. Pay attention to puddles of water in your yard. When water pools in these low areas, it creates a breeding ground for insects like mosquitoes.

6 Check outside faucets. Freezing temperatures can do damage to plumbing; this is especially true for outdoor fixtures. Before hooking up the hose to water your flowerbeds, turn the water on and place your thumb or finger over the opening

of the faucet. If you can stop the flow of water, the pipe inside your home may be damaged. Contact a professional plumber if you aren't comfortable replacing the pipe yourself. While we're on the subject of watering flowers, check the garden hose for dry rot.

7 Clean and service your air conditioning system. Hire a qualified heating and cooling contractor to clean the coils and check for damage to the outside unit. Scheduling an annual service call is recommended to keep the system functioning efficiently. Changing interior filters on a regular basis can also extend the life of your air conditioning system. Also, be sure to vacuum out your floor registers.

8 Inspect the water heater. Water heaters work twice as hard during the winter to make your home a warm and comfortable environment. After all that hard work, water heaters can accumulate rust or develop leaks. To make sure your water heater is at its top performance for spring, check for signs of leaks or corrosion.

9 Repair wood trim. Inspect windows, doors, railings and decks now before the spring rains do more damage to exposed wood.

10 Months of exposure to rain, snow and freezing temperatures can do just as much damage to your child's playground equipment as it can to your home. Ensure all outdoor toys are safe by tightening bolts, removing splinters and sharp edges and cleaning off any mold or animal droppings.



This experienced father/daughter team owns and operates **Historic Restorations**, a construction firm that specializes in historic buildings.



Solar powered Indego bike rental station.

BIKE SHARE PROGRAM

Philadelphia is one of the most bike-friendly cities in the country and it is about to get even friendlier with its own bike-sharing program called Indego.

Indego will allow visitors or members to rent bicycles from 70 stations located from the Delaware to the Schuylkill River, into West Philly and from the Navy Yard

to North Philadelphia, including Temple University's main campus.

Cyclists will be able to walk up to any Indego station and check out bikes for quick trips around the city, 24 hours a day, seven days a week. The quick and convenient system allows users to return their bike rental to the

nearest station after their ride is complete.

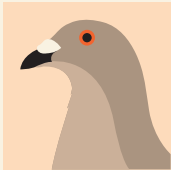
Anyone can check out a bike via credit card for a flat fee of \$4 per half hour, no membership required.

Philly's first solar bike share station, between 4th and 5th Streets on Walnut, opened on Earth Day, April 22.

Visit rideindego.com to learn more.

Pigeons come in seven different colors.

How many have you seen today?



Look around, and you'll probably see a pigeon. Have you ever seen a royal blue Victoria crowned pigeon? Did you know they can fly 50 miles per hour?

At Friends Select, we do more than teach. We inspire fascination.

FRIENDS SELECT

The Center City Quaker School that Sparks Fascination

friends-select.org



Kids, your path to changing the world starts here.

THE BUSINESS OF DONORS
A social entrepreneur pro

UPCOMING TWO-WEEK PROGRAMS

July 6-11
Penn Charter,

August 17-21
Old Pine Community C

[www.thebusinessof](http://www.thebusinessofdonors.com)

NATIONAL WATCH & DIAMOND

Visit our website at NationalWatch.com



PRE-OWNED ROLEX, CARTIER, BREITLING & MORE!

OVER 400 ROLEX IN STOCK

ROLEX REPAIR & REFINISHING - ONE YEAR WARRANTY
WE BUY GOLD, SILVER & DIAMONDS

(215)627-WATCH 8th & Chestnut Streets
Philadelphia, PA 19106

N.W.E. IS NOT AN OFFICIAL ROLEX JEWELER

WE PICK UP FURNITURE DONATIONS

FAST | FREE | TAX-DEDUCTIBLE

MOVING? DOWNSIZING? REMODELING?

Your donation supports self-determination in the hands of the African community.



Tyron Lewis
Community Gym



Uhuru
Health Fest



Uhuru
Jiko Kitchen

UHURU FURNITURE & COLLECTIBLES

...driven by African self-determination

uhurufurniturephilly.blogspot.com

215-546-9616 | 832 N. Broad St | www.apedf.org

An economic development project of the African People's Education and Defense Fund

EXPLORING THE CITY

BY JIM MURPHY

Magnificent Masonic Temple

Some years ago, a Philadelphia tour guide — who saw me near the Reading Terminal Market — asked if I had ever been inside the Masonic Temple.

When I replied no, he said, “You don’t have to go to Europe. You can see everything you want right there.” He wasn’t far wrong.

This stunning building just north of City Hall on Broad Street is like a fantasyland. Impressive on the outside, it is absolutely mind-blowing inside.

Built between 1868 and 1873 at a cost of \$1.6 million, not including decorations and furnishings, the building took 15 to 20 more years and countless dollars to design the inside.

The end result is breathtaking. Today, the space is also available for receptions and catered affairs.

“The robust Norman style of the exterior,” says a coffee-table book published by the Masonic Temple in 2013, gives “way to a fantasy of Renaissance-inspired neoclassicism in the corridors and stairs and to nineteenth-century ‘eclectic revivalism’ in the lodge rooms.”

The second you enter the Temple, you realize you are in a different, incredibly opulent world.

Among the sights are **seven magnificent lodge rooms where the Masons meet.**

Oriental Hall: Decorated in the Moorish style. The colors and decorations were copied from the Alhambra, a 13th-century Spanish castle.

Gothic Hall: Also called the Asylum of the Knights Templar, it has pointed arches, pinnacles and spires throughout the room.

Ionic Hall: Named for the refined, elegant style of architecture of Ionia, where King Ion reigned in Asia Minor.

Egyptian Hall: Decorated in the style of the Nile Valley. Includes 12 huge columns surrounded by capitals peculiar to the Temples of Luxor and Karnak.

Norman Hall: Noted for its round-arch architecture. Contains life-sized figures with the Working Tools of Freemasonry: the plumb, trowel, square, mallet and compasses.

Renaissance Hall: Decorated in the Italian Renaissance style. The Seal of Solomon on the ceiling evokes the sun in the midday sky.

Corinthian Hall: Decorated in strict conformity with the principles of classical Grecian architecture. Features mosaics representing fragments from Greek mythology.

Interesting Oddities

- It’s amazing to me that three extraordinary buildings — the Masonic Temple, the Pennsylvania Academy of the Fine Arts and Philadelphia’s City Hall — all started construction within three years of each other and are situated a stone’s throw apart on North Broad Street. I don’t know of any other city with three such renowned, eclectic structures gathered so close together.
 - The gavel used to lay the building’s cornerstone in 1868 was the same one used by President George Washington, also a Mason, to lay the cornerstone of the U.S. Capitol in 1793.
 - The Temple was one of the first buildings in Philadelphia lighted by electricity.
 - Its first elevator was installed in 1883 because the temple’s long staircase proved troublesome for some members, especially those in ill health or advanced years.
 - The Temple’s museum is also well worth a visit. It includes over 30,000 artifacts — items from George Washington and Ben Franklin, examples of key Masonic symbols and more.
- Do you have questions** about freemasonry, its reputation for secrecy or associations with *The Da Vinci Code*? Ask your tour guide when you visit.

**Grand Foyer**

Inside are seven spectacular halls representing different cultures and styles — each one more dazzling than the last. The building is an architectural tour de force.

FAST FACTS

Name Masonic Temple	Cost to Build \$1.6 million
Home of The Grand Lodge of Free and Accepted Masons of Penna.	Tours Tuesday-Friday, 10 and 11 a.m., 1, 2 and 3 p.m.; Saturday, 10 and 11 a.m. and noon. Call to confirm.
Address 1 N. Broad Street	Costs PA Masons and active military, free; Adults: \$13; students with I.D. \$8; children 12 and under, \$5; Senior citizens (65 & over), \$7. See website for more details.
Honors U.S. National Historic Landmark, U.S. National Register of Historic Places	Phone Tours: 215-988-1917; General Info: 215-988-1900
Architect James H. Windrim	Website pagrandlodge.org
Interior Design George Herzog	
Construction Completed 1873	
Interior Completed 15 - 20 years later	

Jim Murphy, a freelance direct-response copywriter, has run his own marketing consulting business since 2004. He’s also a certified member of the Association of Philadelphia Tour Guides.



— THE ATACAN GROUP —

Luxury Real Estate Experts

THE ATACAN GROUP'S BUYERS AND SELLERS RECENT TRANSACTIONS

Sold

- | | | | |
|-------------|-------------|--------------------------------------|-----------------------|
| 604 Spruce | 233 Gaskill | Society Hill Towers:
25G, 9F, 14G | The Ayre
Penthouse |
| 206 Gaskill | 143 S 2nd | 309 S American | 204 Gaskill |
| 237 S 3rd | 401 Cypress | Hopkinson House 608 | |
| 228 Stamper | 720 Addison | | |



ATACAN GROUP
215-917-1213

www.CenterCityRealEstate.com
CENTER CITY'S LOCAL SOURCE FOR REAL ESTATE

Selling the Society Hill lifestyle since 1999



KELLER WILLIAMS
CENTER CITY
215-627-3500



COME VISIT US AT OUR NEW LOCATION:

604 S. Washington Sq. / Hopkinson House / Philadelphia



*Awarded # 1 in overall Satisfaction
for Home Buyers and/or Home Sellers
2008, 2009, 2010, 2012*

HEADHOUSE FARMERS' MARKET

 BY THE FOOD TRUST'S KATY WICH AND LISA KELLY

Market Back for Its Eighth Season

Society Hill neighbors are delighted to see the return of one of the Food Trust's largest and most popular farmers' markets. Located under the Shambles at 2nd and Lombard Streets, Headhouse Market features more than 40 vendors. In addition to an abundance of fresh produce, shoppers can find a great selection of locally prepared foods and artisanal goods, like soups, ice cream, coffee and wine.

We're Serious About Our Greens!

Spring and summer promises a variety of interesting new produce. Greens are at their finest at these vendors:

Happy Cat Farm offers rare radishes, spring onions, Asian greens and their famous "Happy Cat" arugula.

Blooming Glen Farm has organic spinach, fennel, bok choy, tatsoi, escarole and Swiss chard.

Savoie Organic Farm sells springtime head lettuces and radishes, as well as spicy baby greens mix for salads or sautéing.

Beechwood Orchards showcases gorgeous garlic scapes — like an oversized chive!



Talula's Table brings a Wild Spring onion dip made with lots of foraged ramps.

Market Day Canele experiments in May with spring veggies, such as fiddleheads, asparagus and ramps in their savory tarts.

Weaver's Way will feature sorrel and pea shoots at its stand.

Queens brings lots of interesting Asian varieties, including Malabar spinach, Chinese mustard greens, bok choy and goji berry shoots.

Local Berries Will Soon Be Available

How can something so sweet and so pretty be so good for you? It's a fact that a handful of strawberries contains more vitamin C than an orange. Blueberries and blackberries have an extremely high concentration of antioxidants, while raspberries count vitamin K and magnesium among their list of beneficial properties.

Best of all, berries need little embellishment to deliver a punch at a picnic or dinner table and, because of their summer sweetness, are universal favorites with children.

Most of the berries come out in June, except blueberries, which are at their best in July. Blackberries begin to appear around August. The following Headhouse vendors specialize in seasonal berries: Blooming Glen, Queens Farm, Buzby Farm, Savoie Organics, Three Springs Fruit Farm, and Beechwood Orchards. Three Springs sells gooseberries and cherries, in addition to strawberries, and Beechwood has one of our favorite summer fruits — golden raspberries. You might not know it, but raspberries actually come in four different colors: pink, purple, gold and black.

We've dug up some quick and child-friendly recipes to inspire you. Let's face it: no one wants to spend time in the kitchen cooking when the weather is so lovely outside.

The **Food Trust** is a nonprofit organization whose mission is to ensure that everyone has access to affordable, nutritious food and information to make healthy decisions.

Jamie Deen's Strawberry & Yogurt Popsicles

(this recipe can be found on www.foodnetwork.com)

2 cups of strawberries (hulled and sliced)
 1/3 cup of sugar
 2 teaspoons vanilla extract
 1 cup of vanilla yogurt

Directions:

- 1 Add berries to a bowl, toss with the sugar and vanilla. Rest for 20 minutes.
- 2 Add berries and yogurt to a blender or food processor and puree.
- 3 Divide mixture into 6 Popsicle molds.
- 4 Freeze for at least 4 hours, then enjoy!

Raspberry S'Mores

This may sound crazy, but, hey, you've just made a sweet treat even sweeter!

Make S'Mores as you would normally, but throw in fresh raspberries as you build your tower of cracker, marshmallow and chocolate. It's kind of like playing Jenga. How tall can you build your tower?



**Sunday,
 10 a.m. to 2 p.m.
 2nd and Lombard
 Streets**

OUT AND ABOUT

An Extravaganza of Colors...

Winter was endless and spring took its time getting here. These photos show that because this season is so glorious in Society Hill, it was well worth the wait!



Bonnie Halda is a freelance photographer specializing in historic buildings and the urban environment. She's also a historical architect with the Northeast Regional Office of the National Park Service.

OUT AND ABOUT

Well Worth the Wait



Allan Domb Real Estate Presents The Bank Building 421 CHESTNUT STREET



Opportunity to Create a Custom Home Overlooking Independence Hall

Once-in-a-lifetime opportunity to create a custom home from an entire penthouse floor of raw space overlooking historic Independence Hall. The residence boasts an 851 square foot private terrace; breathtaking city views to the east, south and west; and the potential to be one of the grandest homes in the City of Philadelphia. This floor plan provides one idea of how the penthouse can be designed. 8,383 sf
\$5,000,000

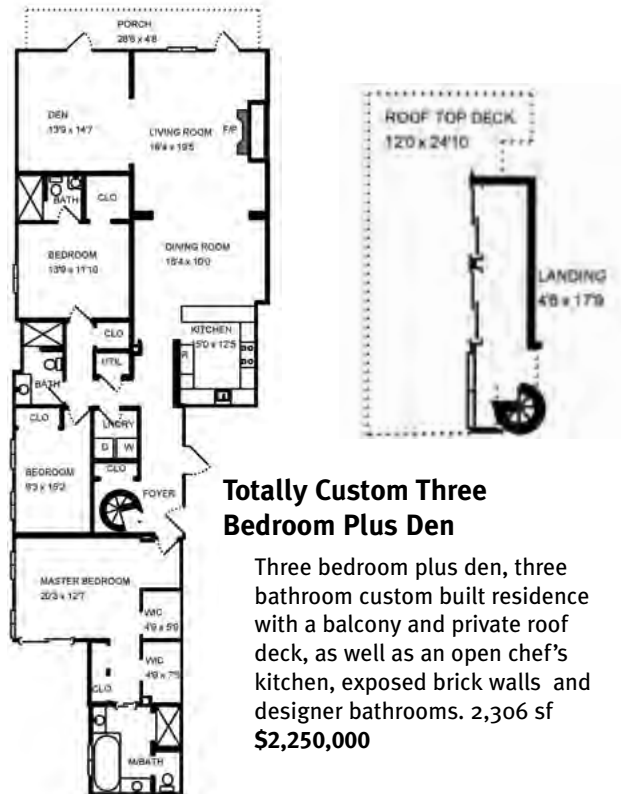
Allan Domb Real Estate Presents The Lippincott

227 S. 6TH STREET



Two Bedroom Plus Den Showplace

Two bedroom plus den, three and a half bathroom showplace overlooking Washington Square and offering southern exposure. The condominium has a Joanne Hudson kitchen, designer bathrooms, lavish master suite and wonderful entertaining and living space. 3,510 sf
\$3,500,000



Totally Custom Three Bedroom Plus Den

Three bedroom plus den, three bathroom custom built residence with a balcony and private roof deck, as well as an open chef's kitchen, exposed brick walls and designer bathrooms. 2,306 sf
\$2,250,000

PHILLY FOOD LOVERS

BY CLAIRE BATTEN

Not Quite Breakfast, Not Quite Lunch

I recently researched venues for special birthday brunches. Two restaurants, Talula's Garden and The Good King Tavern, kept popping up. Not only do they both feature prominently in online "best of" reviews, but more importantly, they also come highly recommended by friends. This includes my hairdresser, who is never wrong. Thanks, Toby.

Talula's Garden serves an extensive brunch, featuring six "beginnings" and seven choices for main plates. The main dishes include buttermilk corn cakes, smoked sausage benedict, asparagus frittata and the to-be-expected omelets, breakfast burger and a "fancy-schmancy" Monte-Cristo sandwich — kind of a posh Croque Monsieur. Fresh-pressed juices and sides that range from grits, potatoes and leeks and fried onion rings complete the menu. Talula's has an impressive wine list also; my husband chose a crisp New Zealand sauvignon to accompany his kale and bacon omelet.

Talula's is rightly proud of its "farm to table" tradition and, arguably, was one of the first restaurants in the city to beat this particular drum. Ask any of the servers about the items on the menu and they will be able to share with you the region from which food is sourced and often the name of the grower or farm providing a particular product. You get the sense that everyone working here is passionate about food and its preparation and consumption.

Our group ordered omelets, the breakfast burger and the house eggs benedict. One of the highlights was the crispy potatoes, which were wolfed down by all. Surpassing those, however, were the Sweet Ricotta Doughnuts filled with either freshly made lemon curd or homemade huckleberry jam. If you've not sampled these, then you've not lived!

If you can reserve a table outside, there's nowhere else in the city quite like Talula's garden!

The **Good King's Tavern** bills itself as a French tavern. What does that mean? That it's a rustic neighborhood bar proffering a French-inspired menu, with lots of draft and bottled beers. In addition, it's lovely and relaxed. We had eaten there multiple times, but we had not yet tried brunch. The brunch menu on the Sunday we visited included stalwarts such as omelets and steak and eggs. But — get this — on this particular Sunday, it also included frog's legs with waffles. I kid you not! I asked about the preparation of the frog's legs and apparently they are dusted in seasoned flour and shallow-fried. Now, if you like chicken wings, then you'll probably love these. There's not much difference between the few mouthfuls of flavorsome flesh on a chicken wing and that on a frog's leg. The legs, though, certainly give you something more interesting to tweet about...

I like The Tavern because they offer a really innovative menu, and they are also sensitive to the needs of my gluten-free daughter. Her appetizer choice comprised a chickpea "Socca" pancake with a ratatouille side, which was perfect. My son had a waffle stuffed with sweet ricotta and raspberry coulis, which was delicious. My daughter and I both polished off a delectable plate of eggs and a French-cut flank steak, which was prepared just right. We all really enjoyed the casual brunch scene at the Tavern, and to my mind, the French fries are the best in town.

Claire Batten and Keri White are the dynamic duo behind Philly Food Lovers. They are business partners in KCC, a marketing consultancy and copywriting agency.

The Best of the Brunch!

Talula's Garden
210 West Washington Square, 215-592-7787
Brunch is served from 10 a.m. to 2 p.m.

The Good King Tavern
614 South 7th Street, 215-625-3700
Brunch is served from 11 a.m. to 2 p.m.

PHILADELPHIA
WINDOWBOX COMPANY



phone 610-310-1973
info@philadelphiawindowboxcompany.com
www.philadelphiawindowboxcompany.com

Creating harmony in body and mind

Judy Moon
and Associates

CONVENIENT, RELAXING MASSAGE THERAPY

Washington Square South
in the Hopkinson House

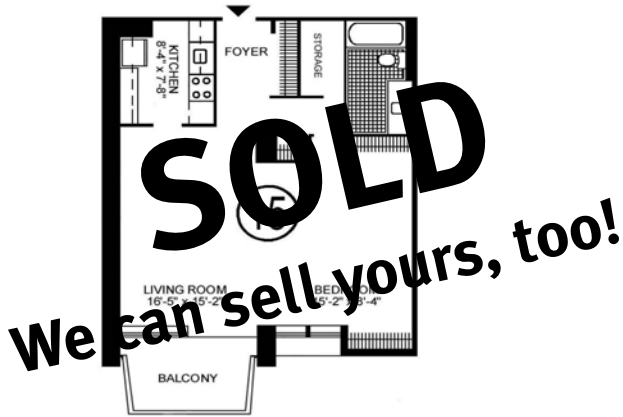
ABMP Certified

267.671.0881 www.judymoon.com

Allan Domb Real Estate Presents

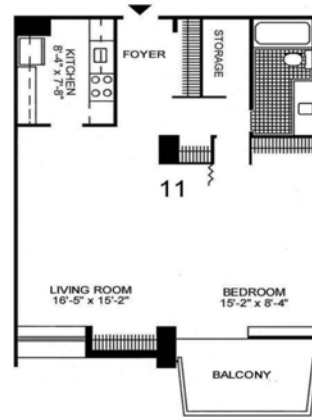


604 S. WASHINGTON SQUARE



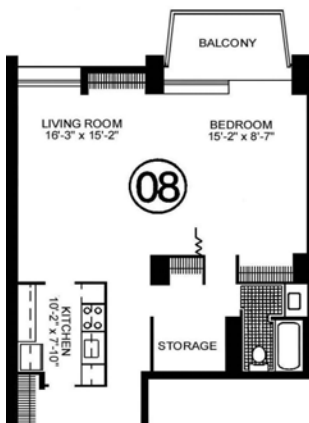
One Bedroom with South City Views

Sun-soaked one bedroom boasting south city views, a private balcony off the living room, updated bathroom and a washer and dryer hook-up. 778 sf
\$269,900



One Bedroom With Treetop City Views

South-facing one bedroom with treetop city views, wood floors, great closet space and a private balcony. 778 sf
\$279,900



Deluxe one bedroom with Washington Square Views

Large, light-filled one bedroom on a high floor with a balcony, wood floors, great closet space and kitchen with white wood cabinetry. 843 sf
\$310,000



Sun-soaked Two Bedroom with Panoramic Southern Views

Two bedroom, one and a half bathroom on a high floor featuring city and river views to the south, great entertaining space, and a private balcony. 1200 sf
\$569,999



SOUTH STREET HEADHOUSE DISTRICT

BY KERI WHITE

How Heavenly!

Society Hill, rejoice! Coming later this year to our neighborhood is Garden of Eden, a highly regarded, New York-based gourmet grocery store that blends the best elements of a high-end supermarket, Old World aesthetics, free parking and a convenient location.

Gourmet and Organic Selections

Garden of Eden will be a 20,000-square-foot market, spanning much of the north side of the 200 block of South Street, from the former Citibank corner storefront west to Rita's Water Ice. Supercuts will relocate a few stores west, and Chef's Table is moving to a location more suitable for their catering business on North Broad Street. Garden of Eden will offer gourmet organic and conventional groceries. Expect to see a butcher and a fishmonger, as well as an on-site bakery with artisanal breads. There will be a large prepared foods section with over 400 types of cheese, a good variety of charcuterie, a hot food buffet and a salad bar. An executive chef will work on-site, overseeing the prepared foods made fresh daily. There will also be a mezzanine seating area and, possibly, sidewalk tables.

One-Stop Shop

Because the space is so large, Garden of Eden will be one-stop shop, with home goods, health and beauty aids and cleaning supplies. Free parking will be available in the Abbot's Square lot; shoppers simply need to have their tickets validated at checkout. For customers who prefer to stay home, there will be a neighborhood delivery service, as well as online shopping. The market has a loyalty card program, which offers a five percent return. Every two weeks, new sales and specials will be featured. Garden of Eden also provides catering services and will ship non-perishable gift baskets anywhere.

"Our first priority is the food," explains Mustafa Coskun, President and CEO. "We never compromise on quality or service, and we offer a wide array of higher-end items. For example, we stock a basic olive priced at \$7.99, but we also offer a specialty aged balsamic vinegar for \$100 — and everything in between. Because we sell about 15 exotic varieties of mushrooms, local chefs often seek us out. Lately, we have focused our kitchens on more Mediterranean flavors, perhaps reflecting my Turkish roots. We see our market as a destination for foodies — and these days, everyone seems to be a foodie!"

Old World Ambiance

Coskun is attentive to the shoppers' experience. "We create an old world ambiance; our other stores have hardwood floors, inviting, spacious aisles, fresh flowers and lots of baskets for displays. Customers feel comfortable and happy in our stores — it is important that everything look fresh, bountiful and attractive." Locals should take comfort in Coskun's aesthetic; he plans for awnings and other exterior upgrades that will complement the historic nature of the neighborhood.



As a boy in Turkey, Mustafa Coskun learned the food business from his father. "My father had a small neighborhood market. I was the only one of his nine children who was interested in the business. On school vacations, I would rent space from him in the front of the store and sell produce. Since then, I've had a passion, talent and interest in the food business. In 1987, I moved to the U.S. with my brother, and we started a produce market in New York. Soon, we had three stores, and eventually we branched into full-service groceries." After setting up four successful Garden of Eden stores in New York, Coskun looked at other cities.

Real Estate developer Eric Blumenfeld is President of EB Reality Management Corporation and owner of Abbott Square. Thinking Garden of Eden would be a good fit for South Street, he invited Mustafa to visit the location. The New York businessman noted that "while there are other grocery stores here, based on the demographics and population density, the neighborhood is underserved for this type of high-end market. The rest is history."

Solid Anchor to South Street

Mike Harris, Executive Director of the South Street Headhouse District, is thrilled about the arrival of the store. "Garden of Eden is destined to become a solid community anchor. Mustafa is really making an investment in the neighborhood, which will have tremendous benefits. As the District continues to grow, we are able to bring in more businesses and amenities that serve the community. This has always been our goal and it is exciting to see it happening."

Garden of Eden Coming to South Street

For more information on the Garden of Eden Market, please visit: www.edengourmet.com. To offer suggestions and keep track of the latest progress, follow them on: www.facebook.com/pages/Garden-of-Eden/809786569071093.

The Headhouse Shambles

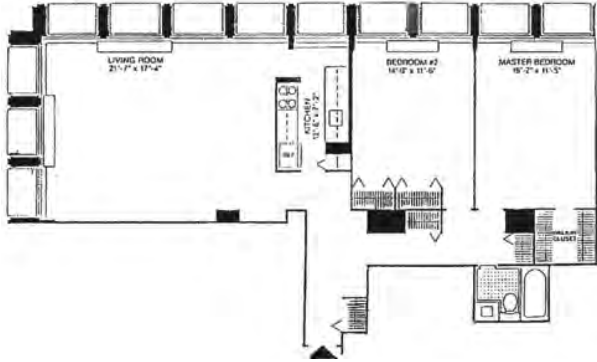
2nd and Pine Streets
P.O. Box 63675
Philadelphia, PA 19147
Phone: 215-413-3713
Cell: 267-216-6541

Allan Domb Real Estate Presents

SOCIETY HILL TOWERS

THE CONDOMINIUM

200-220 LOCUST STREET

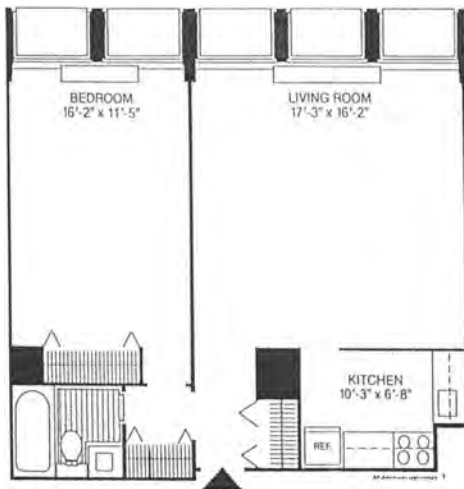


Some of our recent sales:

- | | | |
|-----------|------------|------------|
| 2H NORTH | 10E WEST | 19F WEST |
| 5B NORTH | 10F NORTH | 22DE SOUTH |
| 5C WEST | 11BCD WEST | 23B SOUTH |
| 5E WEST | 11E WEST | 23G SOUTH |
| 5F NORTH | 11G WEST | 24EF SOUTH |
| 5G WEST | 12G WEST | 24G NORTH |
| 6BC SOUTH | 14C SOUTH | 25BC SOUTH |
| 6D NORTH | 15A WEST | 28E NORTH |
| 7B NORTH | 17G WEST | 28E SOUTH |
| 8B NORTH | 17H SOUTH | 28GH NORTH |
| 8G NORTH | 18E NORTH | 30H NORTH |
| | 19C WEST | |

Sun-soaked Two Bedroom with Dramatic City Views

Two bedroom, one bathroom with floor-to-ceiling windows featuring panoramic city views to the west and south, wood floors, an open great room and spacious bedrooms. 1,201 sf
\$469,900

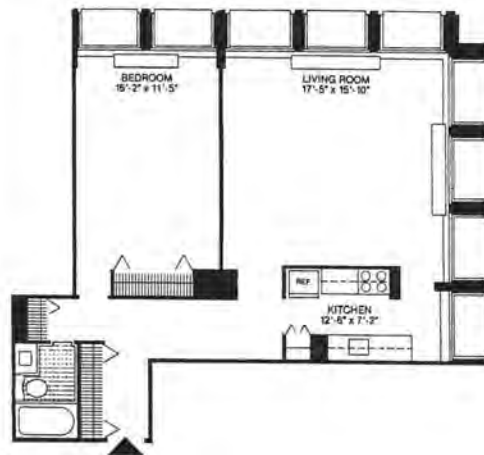


Corner One Bedroom Bathed in Natural Light

Corner one bedroom with great natural light, floor-to-ceiling windows, treetop city views to the south and east, kitchen with wonderful cabinet and counter space and excellent closet space. 750 sf
\$274,900

One Bedroom with Open Floor Plan

One bedroom on a high floor offering dramatic southern views of the river, lots of natural light and a generous open floor plan. 712 sf
\$259,900



W E L C O M E B A S K E T P R O G R A M

BY MARTHA LEVINE

SHCA Partners With Local Businesses

SHCA welcomes new home owners to the neighborhood with a gift — the Welcome Basket, presented at your home by appointment. Filled with fresh foods, information and gift certificates from area restaurants, theaters, shops, services and museums, it is a lovely introduction to Society Hill. If you are new to the neighborhood as of 2014, please let us know you are here. Call 215-629-0727 or email martha6@gmail.com.

Thanks to our contributors who are the lifeline of the Welcome Baskets — many of these businesses have been with us for 10 years. We encourage all neighbors to patronize these wonderfully generous people. Our newest donors are:

Knead Bagels, 725 Walnut Street. We can't seem to get enough bagels in this city! This newest bagel shop offers traditional bagels with toppings, as well as bagels flavored with pastrami spice, togarashi and porcini. They also offer a full variety of bagel sandwiches, salads and delicious soups. Eat in or take out. Hours: weekdays 6:30 a.m. to 2 p.m.; weekends 8 a.m. till sell out.

In Good Health, 232 South 4th Street, rear entrance. Massage therapist Dayna Peck offers a variety of customized therapies: Swedish, deep tissue, hot stone, pre-natal and sport massage help people feel more balanced mentally and physically. By appointment only. 484-686-1590 Hours: Monday, Tuesday, Thursday 10 a.m. to 6 p.m.; Wednesday 11 a.m. to 7 p.m.; Saturday 11 a.m. to 3 p.m. Website: ingoodhealthllc.com.

Scarlett's Antiques, 1018 Pine Street. A huge selection of antique and vintage jewelry, tabletop home accessories and more, all at reasonable prices. It's like stepping back to the 70s and 80s. Well worth the trip to Pine Street. Closed Tuesdays. Open daily 12 to 6 p.m.

La Forno Ristorante-Trattoria, 636 South Street, is a cozy, award-winning Italian eatery offering authentically prepared food from many regions of Italy. Included on the menu are classics like homemade pastas, veal parmigiana and brick-oven pizza. Enjoy a fine selection of wines. Contact 215-627-9000 or visit laforno.com.

2015 SOCIETY HILL WELCOME BASKET CONTRIBUTORS

Coffee Shops

Old City Coffee, 221 Church Street/Reading Terminal Market
Starbucks Coffee Inc., 8th & Walnut Streets

Food Stores

SuperFresh, 5th & Pine Street

Restaurants

Bistro Romano, 120 Lombard Street
Bridget Foy's, 200 South Street
City Tavern, 138 S. 2nd Street
Creperie Beau Monde, 624 S. 6th Street
Fork, 306 Market Street
Garces Group: Amada, 217 Chestnut Street; Rosa Blanca, 707 Chestnut Street; and others
High Street on Market, 308 Market Street
La Buca Ristorante, 711 Locust Street
La Forno Ristorante-Trattoria, 636 South Street
Le Pain Quotidien, 801 Walnut Street
Mustard Greens (Chinese), 622 S. 2nd Street
Positano Coast Restaurant, 2nd & Walnut Streets
Ristorante Panorama, 14 N. Front Street
Serpico, 604 South Street
Society Hill Society, 2nd & Pine Streets
Talula's Daily, café & take out, 208 W. Washington Square
The Farm & Fisherman, 1120 Pine Street
Twisted Tail, 509 South 2nd Street

Specialty Foods

Homemade Goodies by Roz, 510 S. 5th Street
Cookies By Design, Voorhees, NJ
Knead Bagels, 725 Walnut Street
Melange Tea & Spice, 1042 Pine Street
Metropolitan Bakery, 262 S. 19th Street (Rittenhouse Square)
South Street Bagels, 613 S. 3rd Street
The Bagel Factory, 510 Walnut Street (Penn Mutual Building)

Specialty Shops

Adornamenti (jewelry), 1106 Pine Street
Happily Ever After (toys), 1010 Pine Street
Head House Books, 619 S. 2nd Street
Industry (fashion accessories), 1020 Pine Street

Kitchenette (cookware), 117 S. 12th Street (12th & Sansom)

Lolli Lolli (children's clothing/toys), 713 Walnut Street
Paper On Pine (invitations/stationery), 115 S. 13th Street
Scarlett's Antiques, 1018 Pine Street
Show of Hands Gallery (crafts), 1006 Pine Street
Yarnphoria (yarn and supplies), 1016 Pine Street

Theaters/Entertainment

Annenberg Center for the Performing Arts, 3680 Walnut Street
Arden Theater, 40 N. 2nd Street
Ballet X at Wilma Theater, 265 S. Broad Street
1812 Productions (all comedy theater), 215-592-9560
Ghost Tours of Philadelphia, 610-587-8308
Historic Philadelphia Inc., SW corner 6th & Chestnut Street
Independence Seaport Museum, 211 South Columbus Blvd.
InterAct Theater Company, 2030 Sansom Street
Lantern Theater Company, 10th & Ludlow Streets (south of Market)
Lights of Liberty - featuring Liberty 360, 6th & Chestnut Streets
Museum of American Jewish History, 5th & Market Streets
National Liberty Museum, 321 Chestnut Street
Pennsylvania Ballet, Academy of Music, Broad & Locust Streets
Penn's Landing Playhouse @ the Seaport Museum, 211 S. Columbus Blvd.
Philadelphia Chamber Music Society 215-569-8080
Philadelphia History Museum, 15 S. 7th Street
Philadelphia Shakespeare Theatre, 2111 Sansom Street
Philadelphia Society for the Preservation of Landmarks, 321 S. 4th Street
Philadelphia Theatre Company, S. Roberts Theater, Broad & Pine Streets
Piffaro, The Renaissance Band, 215-235-8469
Society Hill Playhouse, 507 S. 8th Street
The Chamber Orchestra of Philadelphia, Kimmel Center, 215-545-1739
The Philadelphia Chamber Ensemble, Old Pine Church
Wilma Theater, 265 S. Broad Street

Other Services

In Good Health, Therapeutic Massage, 484-686-1590
Judy Moon Massage Therapy, Hopkinson House, 604 Washington Square
Liberty Tree & Landscape Management, 215-725-3637
Petmoir, A Memoir of Your Pet. 215-803-0723
Riff Cleaners, 314 S. 5th Street
SCULPT—Personal Trainer, 215-803-0723
The Worth Collection (women's fashions), 215-925-8813

Allan Domb Real Estate Presents

233 - 241 S. 6TH STREET

INDEPENDENCE PLACE SOCIETY HILL · PHILADELPHIA



Beautifully updated two bedroom, two bathroom with a private balcony and intimate southeast city views. The home features wood floors; an open renovated kitchen with wood cabinetry, stainless steel appliances and a large island; and two designer bathrooms with custom appointments. 1,173 sf **\$489,900**



Spacious, light-filled two bedroom plus den, two and a half bathroom featuring a recently renovated kitchen, private balcony, floor-to-ceiling windows, a sumptuous master suite and great entertaining space. 1,734 sf **\$675,000**



Sun-soaked, open one bedroom, one and a half bathroom featuring a chef's kitchen with high end appliances; wood floors; a private balcony; lavish master suite with an office nook, custom walk-in closet and marble-appointed bathroom. 1,205 sf **\$489,900**



One-of-a-kind bi-level penthouse with one bedroom and two and a half baths boasting dramatic views of the river to the south through floor-to-ceiling windows, an open designer kitchen, balcony, and second floor master suite with his-and-hers closets and a marble bathroom. 1,925 sf **\$850,000**



SAFE & SOUND

BY MARILYN APPEL

Don't Be a Soft Target

As neighbors learned from SHCA's weekly crime email blasts, in mid-April there was a gunpoint robbery and a burglary within a few days of each other. The burglarized home had no security system, as well as poor lighting in the area of entry. It's important that we are proactive when it comes to our safety. Here are some tips to help us be smarter than the criminals. If you do not receive our email blasts, sign up by contacting SHCA Administrator Matt DeJulio at mattdejulio@aol.com or 215-629-1288.

- Learn more about Philadelphia's Safe Cam initiative at safecam.phillypolice.com. Security cameras registered with police department keeps us safer.
- Arm your security systems at night and when you are away.
- Be mindful of your surroundings when walking the street, especially at night.
- Update your front and rear outdoor lighting.

If you think a burglary is about to happen, call 911 and say, "Urgent. A burglary is in progress."

Go DEEP Into the Delaware River

Land Health Institute is presenting a Summer Twilight version of DEEP, the Delaware River Environmental Explorer Program. DEEP is an up-close, interactive, exploration-based workshop for the general public, focused on the urban ecology, culture and planning history of the riverside areas from Northern Liberties to South Philly. The inaugural DEEP, held last fall, was a smashing success. This rendition will feature Thursday evening treks through intriguing urban wilderness, followed by animated discussion of our experiences over refreshments at a local café.

Classes run from 6 to 9 p.m. on Thursday evenings, beginning June 18 and ending August 6. Each registrant receives an official shirt, field bag, field journal and hand lens. To register for or to learn more about this program, contact Rachael Griffith at rachael@putnatureback.org.

**Exploring Wilderness at the River's Edge****YOU'RE MAKING MOVES. LET US DO THE WORK.**

We love Philadelphia.

We know the neighborhoods. With over 27 years of experience, we're experts at what we do.

The McCann Team will provide you with a free estimate of value for your home.

No cost, obligation or hassle!

Check out our video to get to know Mike & his team - you can find it at www.mccannteam.com! While you're there, see what our clients have to say!

Call us or visit our website. We can't wait to hear from you!

Mike McCann "The Real Estate Man" and The McCann Team

BERKSHIRE HATHAWAY
HomeServices

Fox & Roach, REALTORS

Direct: 215.440.8345

www.McCannTeam.com

Office: 215.627.6005

NEW LISTING



310 S. 2nd Street

- *Dramatic, contemporary interior behind an 18th-century façade*
- *2 story living room with partial stone walls*
- *Dining room overlooks side and rear landscaped gardens*
- *Architectural eat-in-kitchen, hand-made tiled walls*
- *5 fireplaces*
- *Large scale bright and airy spaces throughout*
- *Glorious deck with city views*
- *Well-designed one-of-a-kind must-see property!*

By appointment only.

Call

Jan Stephano OR Karen Joslin

Plumer
& Associates, Inc.
Realtors



215-219-7894

THE DAMON MICHELS TEAM

Specializing in The Main Line and Center City



IF YOU ARE LOOKING TO BUY OR SELL CALL DAMON MICHELS
cell: 610.731.9300
office: 610.688.4310
Damon@DamonMichels.com
www.DamonMichels.com



THE WILLIAM PENN HOUSE
1919 Chestnut Street
Rittenhouse Square
Efficiencies, 1, 2 and 3 Bedrooms

BERKSHIRE HATHAWAY
HomeServices

OVER \$85 MILLION IN 2013 SALES! Fox & Roach, REALTORS®

Elfant & Wissahickon
— REALTORS® —
Your Neighborhood Resource
For Everything Real Estate

Claudia McGill
215.893.9920 claudiamegill.realtor

Plumer & Associates, Inc.
Realtors

Plumer

Center City's largest independent Realtor.
Serving Philadelphia since 1923.

Residential, Commercial, and Investment Real Estate

For a complete listing of Center City properties visit our website:
www.plumerre.com

226 South Street, Philadelphia
info@plumerre.com
215 922 4200



Our record speaks for itself.

Kathy, Patrick and the Conway Team

BERKSHIRE HATHAWAY
HomeServices
conwayteam.com • kathy@conwayteam.com
215-266-1537 • 215-627-6005
Fox & Roach, REALTORS

UNRAVELING HISTORY'S MYSTERIES

Landmarks' Summer Sleuths Day Camp

August 10 – 14 and August 17 – 21

Landmarks is offering a wonderful choice for summer day camp right here in our own historic neighborhood. Based at the Physick and Powel Houses, it allows kids ages 5 to 12 to explore history, colonial crafts and fine art. In addition, they take several field trips each week

to places like the Magic Garden, Philadelphia History Museum and Pennsylvania Hospital. The children even cook their own snacks, including baking snickerdoodles and churning ice cream! Contact Donna Baldino, Camp Director, at 215-925-2251 x5 or email education@philalandmarks.org.

Learning Traditional Embroidery Stitches



It's Back!

Spruce Street Harbor Park, at Spruce Street and the Delaware River, re-opens May 22. It's better than ever with expanded restaurant offerings and a meadow of perennials donated by the Philadelphia Museum of Art. Hammocks, Adirondack chairs and picnic tables will adorn every accessible area to allow for summer lounging along the waterfront. Visit delawareriverwaterfront.com for more information.

Check It Out

SHCA board member George Dowdall has just updated the Society Hill entry in the *Encyclopedia of Greater Philadelphia*, a comprehensive guide to Philadelphia and its history. George is Professor Emeritus of Sociology at Saint Joseph's University and Adjunct Fellow, Center for Public Health Initiatives, University of Pennsylvania. You can find this essay, and much more, at philadelphiaencyclopedia.org/archive/society-hill/.

Does Your Green Thumb Itch?

The Pennsylvania Hospital Physic Garden, a beautiful collection of medicinal plants at 800 Spruce Street, needs volunteers to weed, prune and deadhead. Perks include free lunch in the hospital cafeteria and \$5 parking. Bring your own hand tools, gloves, water and a hat. For more information, contact Kate McGrann at 215-334-6111 or kmcgrann@aol.com.

Mazel Tov!

Society Hill Synagogue proudly announces that the *Jewish Daily Forward* newspaper has named Rabbi Avi Winokur one of "America's Most Inspiring Rabbis." Rabbi Winokur is a graduate and board member of the Reconstructionist Rabbinical College and a member of the Reconstructionist Rabbinical Association. He has been Rabbi at Society Hill Synagogue since 2001, after serving as Rabbi for several other congregations.

Mark J. Bojanowski / TEAM MJB

Kurfiss Sotheby's International Realty

Rittenhouse Square

237-47 S 18th St 18C, Philadelphia, PA 19103
4 Br / 4.5 Ba / 3,000 sq. ft
\$2,200,000.00

Fishtown

1212 E. Oxford St, Philadelphia, PA 19125
3 Br / 2.5 Ba / 2,187 sq. ft
\$349,900.00

Old City

12-165 Letitia St, Philadelphia, PA 19106
2 Br / 1 Ba / 844 sq. ft
\$269,900.00

Washington Sq. West

COMING SOON
Luxury Apartments
2 BR / 2 BA / office-den
1,800 sq ft
\$3,595 / Mo.
Wide plank HW floor
Exposed Brick
Gourmet Kitchens
Bright corner units

Washington Sq West

30 S. 7th St, Philadelphia, PA 19106
3,800 sq ft 3 Net Lease
\$7,800.00 / Mo

Chestnut Hill

208-10 Rex Ave, Philadelphia, PA 19118
9 Br / 5.2 Ba / 9,864 sq. ft
\$1,599,000.00 New Price

Welcome the Tall Ships to the Waterfront June 25—28.

Like us on Facebook.
Team MJB

The Finest Real Estate in the World!

Mark J Bojanowski 215.704.3994
226 West Rittenhouse Square, Suite 102
Philadelphia, Pennsylvania 19103
Phone: 215.735.2225 office (Ask for Mark)



**SMART
RESPONSIVE
EXPERIENCED**

**Bari Shor
Real Estate
MatchMaker**

Whether you're selling or buying
a home in amazing Center City,
Bari Shor cares and *delivers* for you.

I am your neighbor,
let me be your Realtor,[®] too!



**BERKSHIRE
HATHAWAY**
HomeServices

Fox & Roach, REALTORS[®]

215-790-5678
Barishor@aol.com
215-546-0550 x 5678

Top 6% of all Realtors in Prudential Network Nationwide
Accredited Luxury Home Specialist
Diamond Award

I am a professional,
full-time real estate agent
as well as your neighbor.

■ **PAMELA D. LAWS**

ABR, ALHS, SRES, ASP



Like many of my clients,
Society Hill is my home.
I specialize in Center City
because I love Philadelphia.
Let me find the perfect
townhome or condo for you!



**BERKSHIRE
HATHAWAY** | Fox & Roach,
HomeServices REALTORS[®]

215.790.5688 pam.laws@prufoxroach.com
WWW.PHILADELPHIAPROPERTIES.NET

An independently owned and operated member of the Prudential Real Estate Affiliates, Inc.



**In Center City Real Estate
there's one name to call**

Izzy Sigman

Named Philadelphia magazine
Five Star Professional Real Estate Agent 2014

*Put my 25 years of experience to work for you!
As an experienced agent I can help you navigate
the market and negotiate the best deal.*

I will take the stress out of buying or selling your home

- **Assisting empty nesters downsize & sell their homes is my specialty**
- **I will be by your side from listing to sale to move-out**
- **Working with my comprehensive team of professionals, I am prepared to help you get your home ready today!**

Call Izzy Sigman
Plumer
Associates, Inc.
Realtors

226 South Street
215-922-3600 x 228 Office
215-806-6958 Mobile



Hi Tech. Hi Touch.

A Winning Combination —
in Person and on the Web!



Buying? Selling?

Please call or email
Rosemary Fluehr.

**Know someone who's
Buying or Selling?**

Let me know. Referrals are
the strength of my business.

Rosemary Fluehr

Associate Broker, GRI



**BERKSHIRE
HATHAWAY**
HomeServices
Fox & Roach, REALTORS[®]

215-440-8195 – Direct
215-627-6005 – Office
215-514-9884 – Cell

rosemary.fluehr@foxroach.com
www.rosemaryfluehr.com
530 Walnut Street, Suite 260
Philadelphia, PA 19106

MEMBERSHIP UPDATE

BY MATT DE JULIO

2015 Membership Drive Leaps Ahead



Congratulations to Shawn and Stanton Myerson, who won a \$100 certificate to a restaurant of their choice for renewing their SHCA memberships before December 31, 2014! In our last issue, we profiled the other winning couple, Fred and Judith Zernik.

Shawn and Stanton Myerson moved to Society Hill 10 years ago and have been SHCA members for five years. Stanton is owner of one of America's oldest family-owned pawnshops. The couple has a son, a daughter, four grandchildren and two fuzzy pups. They both enjoy art, antiques and charitable work. For them, Society Hill feels like the suburbs in a city. Besides more upscale retail, they would like cleaner, safer streets in our neighborhood.

Help Reach Our Goal by Renewing Now!

By early March, 942 Society Hill residents have renewed their association membership – about six percent ahead of the same time last year, despite 167 members still delaying. We are on track to surpass last year's total of 1,035 and exceed the all-time high of 1,068, which was set in 2013. So far 66 new members have signed up this fiscal year. If you have delayed in sending in your renewal or wish to join, please do so today and help us set a new record. Keep in mind that this year a number of restaurants and other businesses are offering discounts to SHCA members who show their card(s).

Without member dues, SHCA would cease to function. Protect your neighborhood and your real estate investment. Sign up today! Email mattdejulio@aol.com with questions or comments, which will be shared with our board members representing every quadrant in our most unique historic neighborhood.

Matt DeJulio is a retired publishing executive. He has served SHCA as its administrator since 2001.



Society Hill
CIVIC ASSOCIATION

Membership
Application

Name _____

Address _____ Apt. # _____

City, State, Zip _____

Home Phone _____

Work Phone _____

Email
(print clearly) _____

IMPORTANT: Today, most everyone communicates via email. Please be sure that we have your current email address – so that you can receive important updates between publication of our community newsletter. All SHCA emails will be judiciously screened, and rarely will we send emails more than once a week. Nor will we share your email address with anyone else. This convenient, 21st-century system helps save our civic association postage costs, while keeping you regularly informed.

Residential Memberships

- \$ 50 Basic Household Membership
- \$ 40 Senior/Student/Single
- \$ 100 Federal Friend
- \$ 150 Georgian Grantor
- \$ 300 Jefferson Benefactor
- \$ 500 Washington Benefactor
- \$ 1,000 Benjamin Franklin Benefactor

Business Memberships

- \$ 100 Institutions – 5+ employees
- \$ 60 Institutions – fewer than 5 employees

Additional Contributions

\$ _____ Washington Square Beautification \$ _____ Franklin Lights
 \$ _____ Sidewalk Cleaning/Graffiti Removal \$ _____ Tree Tenders
 \$ _____ Zoning and Historic Preservation \$ _____ McCall School

Total Enclosed \$ _____

Charge VISA/MasterCard:

Number _____ Exp Date _____

Signature _____

The following topics are of special interest to me. I welcome receipt of email updates on these topics.

- Clean-Up Day Washington Square Zoning & Historic Preservation
- Franklin Lights Social Events Fundraising
- Dilworth House Property Taxes Local Crime
- Reporter* Casino Issues Incidents and Alerts

Please return completed application to:
Society Hill Civic Association, P.O. Box 63503, Philadelphia, PA 19147

NIFTY NEIGHBORS IN MY OWN BACKYARD

BY JANE BIBERMAN

'The Geator With the Heater'



Jerry Blavat

Jerry's All-Time Favorites

- 1
"In the Still of the Night"
The Five Satins
- 2
"Since I Don't Have You"
The Skyliners
- 3
"Earth Angel"
The Penguins
- 4
"The Great Pretender"
The Platters
- 5
"It's All in the Game"
Tommy Edwards
- 6
"Here's That Rainy Day"
Frank Sinatra
- 7
"You Belong to Me"
Jo Stafford
- 8
"Old Cape Cod"
Patti Page
- 9
"All the Way"
Frank Sinatra
- 10
"Love Is a Many Splendored Thing"
Shirley Bassey

He's as indigenous to our town as Philadelphia cheesecake or Pat's Steaks. If you've never heard of the guy who owns that moniker, Jerry Blavat, then chances are you're a contemporary of Benjamin Franklin. Although the brash kid from South Philly was born in July 1940, he's still going strong. You could call him a Golden Oldie, because age hasn't tarnished his act or his enthusiasm. If you call him a deejay, he'll correct you. "I'm an *entertainer*," says Jerry, "and I've been entertaining legions of fans across the country ever since I started dancing on Bandstand as a teenager."

Frank Sinatra called him "Matchstick," because he was so thin, and Jerry maintains his slim shape by working out in his 2,200-square-foot corner condo at Society Hill Towers, where he's lived since 1976. "I just keep moving and dancing," he says, adding that he watches what he eats and never eats to excess. "I also go to the gym, Sweat Fitness, regularly, and I bike all over town for exercise and enjoyment. I don't drink, except for fine red wines, which I collect. I love to go to BYOs." Some of his favorite restaurants are Modo Mio on Girard Avenue and Mustard Greens in South Philadelphia. He can often be seen at Radiccio's.

Back in the day, his pals Sammy Davis, Jr., Al Martino and Don Rickles, for whom he worked as a chauffeur and valet, liked to frequent Frankie Bradley's, Dave Shore's, Benny the Bum's and Lew Tendler's. Jerry knows everyone you've ever heard of in the world of R&B and rock and roll, and most of them have performed on his former show, the Discophononic Scene on CBS-TV, or on his radio programs. His dance parties still draw big-time performers, while Memories, his nightclub in Margate at the shore, is just as popular as ever.

Jerry's life is an open book, literally. In 2011, Running Press published *Jerry Blavat: You Only Rock Once*, a tell-all autobiography with a forward by Dick Clark and praise from Little Richard, Smokey Robinson, Fats Domino, Berry Gordy (founder of Motown Records) and native son Kevin Bacon, who wrote, "Jerry was a huge

influence on the Philadelphia music scene and continues to be a cornerstone of Philly culture."

In 1998, Jerry was inducted into the Rock and Roll Hall of Fame, and more recently Mayor Michael Nutter presented him with a 50-year Service Award. But Jerry is even prouder of his daughters Kathi, Geraldine, Stacy and Desirie — his five grandchildren — and two great-grandchildren. He hasn't lived with Patti, the mother of his children, in decades, but he never got divorced, perhaps because he himself was the product of a broken marriage. His longtime companion is Keely Stahl, who lives in his Florida home.

His beloved mother, Lucille Rose Capuano, raised Jerry and his older sister, Roberta, as Catholic. (His sister later converted to Judaism.) His father was rarely around. "He was called Louie the Gimp because he limped due to polio as a child," explains Jerry. "He was a Jewish bookmaker who gambled on everything from horses to election results." Jerry considers Jocko, the late great black deejay, his spiritual father and mentor.

After he graduated from Bishop Neumann High, Jerry went on the road. His first job was road manager for Danny and the Juniors. He was soon a major mover and shaker. These days, his work is primarily on the East Coast, and Jerry is happy staying close to home. "I love the Society Hill Towers," he says. "It's a small community of wonderful people where everyone is friendly. I enjoy my surroundings."

Although he loves the movies and was an inveterate moviegoer as kid, Jerry almost never goes to the Ritz theaters. "That's because I have no spare time," he says. His crowded calendar rarely has an empty day.

"I take a vacation between Christmas and New Year's, usually to Aruba, Jamaica or Paradise Island," he tells us. But on New Year's Eve, he hosts a dance party at his good friend Sidney Kimmel's place on Broad Street. It's work that is the secret to his satisfaction. "I love my life because I am fulfilled and following my passion and my dream and seeing the reward of making people happy," says Jerry.

Jane Biberman, former editor of *Inside Magazine*, is a freelance writer who has contributed to a variety of publications.

BANK LOCAL



Ask today about
our 13 Month CD
at 1.20% APY.*

Eric & Ryan Berley
Owners, The Franklin Fountain
& Shane Confectionery



(267) 295-6420
EastRiverBank.com



Christopher P. McGill, President & CEO

* Annual Percentage Yield. APY Effective as of April 13, 2015. Minimum balance to obtain APY: \$500. Fees may reduce earnings. A penalty may be imposed for early withdrawal. Individual Retirement Accounts: Additional IRS penalty may apply. Please consult your tax professional. Upon maturity, this certificate of deposit will automatically renew for a 12 month term. You will have a 10 day grace period during which you may withdraw funds without a penalty. Please contact us for additional details.

EAST FALLS | ROXBOROUGH | OLD CITY (36 North 3rd Street)

A Benefit for Washington Square

10 June :: 2015



WASHINGTON SQUARE AFFAIR 2015

Washington Square Affair :: 2015 ■ Washington Square Affair :: 2015 ■ WASHINGTON SQUARE

Washington Square Affair :: 2015

...a benefit dedicated to the maintenance and beautification of Washington Square.

Wednesday, June 10th, 2015, 6:30 p.m.

Patron Cocktail Affair

...a garden party benefiting Washington Square

Friday, May 15th, 2015 at 6 o'clock p.m.

at the gracious residence of

Pamela & Ajay Raju

For tickets and information visit

societyhillcivic.org

Allan Domb Real Estate Presents

THE ESTATE HOME AT 4TH AND LOCUST



Once-in-a-lifetime opportunity to create the most spectacular estate home in all of Society Hill by combining The Shippen-Wistar House (built in 1750) and The Cadwalader House (built in 1829). These adjacent residences offer tremendous history, an unparalleled location in the heart of Society Hill, and endless possibilities in terms of layout and design. The Estate Home at 4th and Locust has a large private garden and approval for up to four parking spaces. For more information including images, a drone video and sample floor plans done by architect Cecil Baker, please visit www.shippen-wistar-cadwalader.com or www.allandomb.com.

13,673 sf
\$5,500,000