



SOCIETY HILL

# Reporter

[www.societyhillcivic.org](http://www.societyhillcivic.org)

## From Graveyards to Plazas



**Wooden sculpture of Reverend Duffield at the Old Pine Street Church graveyard.**

The Society Hill Civic Association (SHCA) invites all neighbors to its General Membership Meeting on November 18 for an evening of eclectic information about our neighborhood and its history. Society Hill neighbor and president of Old Pine Conservancy Ronn Shaffer will speak about Revolutionary War patriotism, the Old Pine Street Church graveyard and its new sculpture of the historic Reverend George Duffield. Wood carver Roger Wing will give neighbors a sense of his creative process in sculpting Reverend Duffield. Also, South Street Headhouse District (SSHD) Executive Director Mike Harris will update us on the Headhouse Plaza and other SSHD projects.

Ronn Shaffer, resident historian of the Old Pine churchyard, has “unearthed” the records of 270 buried Revolutionary War soldiers, plus others affirming that 500 church members served in the war. Ronn, who leads tours of the graveyard, is also an appraiser of decorative art.

Fishtown artist Roger Wing has been carving for more than 25 years. Wood is his favorite material, because it is warmer than stone and more permanent than ice, the other materials he carves most often. His large commissioned woodcarvings stand in city parks and private residences throughout the Philadelphia region.

Exciting things are happening on South Street! Mike Harris will give us all the latest news. Before serving as SSHD’s executive director, Mike served as Vice President for Operations and Facilities at Rowan University.

Remember that everyone is welcome to attend our General Membership Meeting. Simply arrive at Pennsylvania Hospital’s Zubrow Auditorium, located on the first floor inside the main entrance at 8th Street near Spruce, before 7 p.m. All members interested in Society Hill issues are welcome at our monthly Board Meeting, 5:45 p.m. at the Great Court Conference Room.

### Kick Off Holiday with Friends and Neighbors



Mark your calendars! SHCA is sponsoring its annual Holiday Social on Wednesday, December 2, at Bridget Foy’s, 200 South Street, from 6 to 7:30 p.m. The cover charge of \$15 per person for SHCA members includes hors d’oeuvres. A cash bar and \$5 house wine will be available. RSVP by Monday, November 30, with your payment, in order to provide the restaurant with an accurate count. If you wish to attend and are not a member, fill out the form on page 25 or visit [societyhill.org](http://societyhill.org).

### WEDNESDAY

November  
**18**

**5:45 p.m.**

### MARK YOUR CALENDAR

Society Hill Civic Association Meetings  
Wednesday, November 18, 2015

**Pennsylvania Hospital  
8th and Spruce Streets**

**Board of Directors Meeting**

Pennsylvania Great Court Conference Room  
All SHCA members are welcome.

**7:00 p.m.**

**General Membership Meeting**

Pennsylvania Hospital Zubrow Auditorium  
All neighborhood residents are invited to attend.

**Speakers:  
Topic:**

**Ronn Shaffer, Roger Wing, Mike Harris**  
Revolutionary War Patriotism, South Street Updates

### HAPPY BIRTHDAY, BILLY!



**Celebrating William Penn’s 371st birthday, the Quaker City String Band serenaded William Penn re-enactor Tom Smith in Welcome Park.**



SOCIETY HILL

*Reporter*

**NUSA  
2014 & 2015  
Award  
Winner**



**mw** designgroupllc.com

267.872.8814

**Managing Editor**

Sandra Rothman

**Columnists**

Marilyn Appel  
Claire Batten  
Jane Biberman  
Matt DeJulio  
Julie Featherman  
Martha Levine  
Jim Murphy  
Keri White

**Contributors**

Bob Kramer  
Mary Purcell

**Graphic Design**

Judy Lamirand  
Parallel Design, Inc.  
judy@parallel-design.com

**Press Release Liaison**

c/o Matt DeJulio  
mattdejulio@aol.com

**Advertising Manager**

Lenore Hardy  
Hardy@drexel.edu

**Submission Deadlines**

January/February Issue  
Advertising: December 1  
Editorial: December 1

**Society Hill**

**Civic Association**  
P. O. Box 63503  
Philadelphia, PA 19147  
Tel. 215-629-1288

**Website**

Find past issues in color  
at [www.societyhillcivic.org](http://www.societyhillcivic.org).

**Submissions**

If you have news that would be of interest to Society Hillers, email Sandra Rothman at [sandra.rothman@aol.com](mailto:sandra.rothman@aol.com). Materials must be submitted in writing and include the name of a contact person. Edited submissions will be considered for publication if space permits. Letters to the Editor must be signed, with contact information.

**SHCA Mission Statement**

The aims and purposes of SHCA are to promote the improvement of the Society Hill area of Philadelphia, including its cultural, educational and civic activities, and the preservation and restoration of its historic buildings; to represent the residents of Society Hill in matters affecting the City of Philadelphia generally and Society Hill in particular; and to interpret the value and significance of Society Hill to the public.

**SHCA Board Officers and Directors**

**President**

Robert Curley

**First Vice President**

Kim Williams

**Second Vice President**

Martha Levine

**Recording Secretary**

Diane Stein

**Treasurer**

Marc Feldman

**Directors-at-Large**

Georgine Atacan, George Dowdall, Diane Harrison, Sissie Lipton, Fred Manfred, Mary Purcell, Heather Steiner, Vijay Verma

**Northeast Quadrant**

2016 Lisa Unger  
2017 George Kelley  
2018 Robert Kramer

**Northwest Quadrant**

2016 Amy DeMarco  
2017 Norman Lieberman  
2018 Mary Tracy

**Southeast Quadrant**

2016 Jeff Berry  
2017 Barbara Gelman  
2018 Gail Hauptfuhrer

**Southwest Quadrant**

2016 Daniel Horowitz  
2017 Carolyn Ambler Walter  
2018 Martha Moore

**parallel design**

**Find our designs online.**

**BeyondTheLibertyBell.org**  
**Parallel-Design.com**

215-476-4040

Logos  
Websites  
Banners  
Newsletters  
Books  
The Award-Winning Society Hill  
Brochures  
Invitations  
*Reporter!*



# Bulletin Board



**Carolyn Ambler Walter** moved to Society Hill with her husband, Bruce Bryen, last year, from Newtown Square in Delaware County. She formally retired from academia five years ago, having been a professor for many years in the Center for Social Education at Widener University. Carolyn loves to write and has published five books. She continues to do presentations and writing, within her specialty of grief, loss and transformation.

Bruce is a business consultant for dental practices across the country. Their blended family is comprised of seven children and eight grandchildren, with a baby girl due to arrive any day!

These former suburbanites enjoy babysitting when they're not experiencing all the city has to offer. They both especially love Philly's wonderful music venues, from classical to jazz. Carolyn enjoys singing, biking, reading and writing. She also loves travel and snorkeling.

Carolyn lives in Addison Court and represents Society Hill's Southwest Quadrant. She joined the SHCA Board because she wanted to make meaningful contributions to her new community, as well as meet and work with other neighbors to improve our neighborhood and city.



**Georgine Atacan**, SHCA Director-at-Large, has lived in Society Hill for the past 15 years with her husband, Antonio, and their two children, Angelina and Julian, who attend St. Peter's School. The family lived in a Colonial home on Delancey Street for several years and now own a Federal house on Spruce Street.

Originally from Chicago, Georgine moved to Philadelphia 20 years ago to attend the University of Pennsylvania for graduate school. Her education and professional training are as an Adolescent Psychotherapist. She left that field to help Antonio open a real estate brokerage in Philadelphia. They own Keller Williams Real Estate, named the #1 Best Place to Work three years in a row by Philly.com.

The couple feels that Society Hill's tight-knit community – where most families know each other and a play date is minutes away – is the best place to raise children in Center City. And that it is absolutely magical to walk down the cobblestone streets of our neighborhood when the trees are in bloom, or during a snowy day.

Georgine joined the board hoping to bring her viewpoint as a mom raising two young children and as an entrepreneur who owns a business in Society Hill.



**George Kelley**, Northeast Quadrant Director, is a civic activist who moved to Society Hill 10 years ago from Bryn Mawr. He has been especially impressed with how neighbors show both concern for our beautiful community and a willingness to become involved in keeping it that way. George previously served two terms as president of the Wynnewood Civic Association and has just completed 12 years as president of the Tiburon Shores Condominium Association in Sea Isle City, New Jersey.

A retired attorney, George is proud of the success he had building a sole practice concentrating in mergers and acquisitions. He has brought this expertise in law to the SHCA board as a member of its Legal Committee. In addition, he has been involved for many years in removing graffiti and litter from our streets and public furniture. Residents might remember George with his carryall of cleansers and rags, always at the ready to do his part in keeping Society Hill sparkly clean. That job has now fallen to his son Todd, owner of Graffiti Removal Experts, LLC. But you can still see George picking up the odd piece of litter after weekly trash pick-up.

In his spare time, George enjoys ice skating, reading about history and mornings socializing with "Philly Is Walking in the Park!" In addition, he likes to work out in the gym, travel and usher for "Society Hill - Hot and Healthy!" events at the Athenaeum.



## Park, America!

If you are interested in leasing a parking space at 511 South Front Street, contact Matt DeJulio, 215-629-1288. Monthly parking service will begin November 1, and will cost \$190. A Park America attendant will be on site to monitor the entire lot on Friday and Saturday evenings and for special events. A security camera will soon be installed.

## In This Issue...

**Page 5**  
Fall Clean-Up Day

**Page 7**  
Committee Update:  
5th Street

**Page 9**  
Pier 68 Park

**Page 13**  
Exploring the City:  
The Library Company

**Page 14**  
Out and About: Tricks,  
Treats and Little Streets

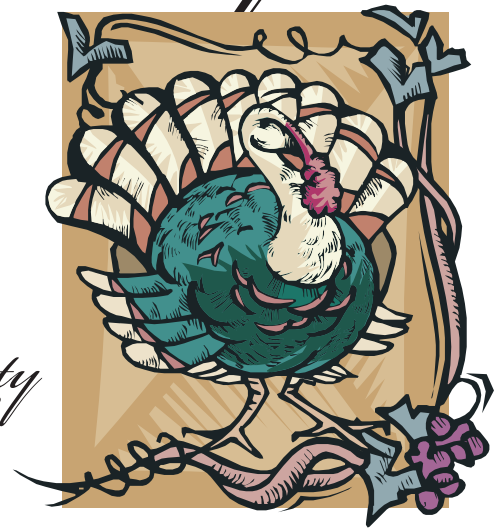
**Page 17**  
On Our Shelf: A Holiday  
List of Notable Reads

**Page 19**  
SSHD: Kickboxing and  
Cupcakes

**Page 26**  
Nifty Neighbors: Meet  
Stanley & Tricia Fleishman



# Happy Holidays



*from  
The  
Society  
Hill  
Civic  
Association*

For Students Who Always Ask "Why?"—

## AN ENDLESS WORLD OF "WOW"

**FASCINATION**  
FOREVER BRIGHT



friends-select.org

FRIENDS SELECT



### LANDSCAPE & HARDSCAPE SERVICES



- Patios, Walkways, Driveways
- Stone, slate, Brick, Pavers
- Stone Walls, Retaining Walls, Fencing
- Pergolas, Arbors & Trellises
- Ponds, Fire Pits, Inground Pool Decks
- Shrub & Tree Installations, Removals & Replanting
- Seeding, Sodding
- Large and Small Yards

Call for free estimate 215-844-TREE (8733)  
[www.mcfarlandtree.com](http://www.mcfarlandtree.com)

## Rise and Shine!



### Breakfast at the Market



**READING TERMINAL MARKET**  
MON-SAT 8-6 & SUN 9-5 • \$4/2HR PARKING • 12TH & ARCH STREETS • 215-922-2317  
[www.readingterminalmarket.org](http://www.readingterminalmarket.org)

SATURDAY, NOVEMBER 14

## Fall Clean-Up Day: Let's Bag Those Leaves!

It's time again to prepare our neighborhood for winter. Ice and snow make accumulated leaves and litter treacherous underfoot on our brick sidewalks and cobblestone streets.

This year, sweeper trucks will be on the streets on Friday evening, November 13, to pre-clean before cars are moved to the alternate side. On Saturday, November 14, we ask you to sweep around your house and on your block. Remember to get those gutters cleared, as well as nearby walkways and alleys, before the city's sweeper trucks come back sometime between 8 a.m. and noon. Consider stepping up to the plate if you notice your neighbor is away or a rental property needs a little TLC. And let's not forget Three Bears Park!

It's worth noting that because of city budget cuts, SHCA is picking up half of the bill for the sweeper trucks this year. State Representative Michael Brian is paying for the shredding services and staff from his office will be there to answer any and all questions. Trash bags will be available, handed out by SHCA's Clean-Up Day volunteers, at the South 5th Street Super Fresh, from 8 a.m. until 1 p.m. Your bagged leaves and street litter, but no household trash, should be left by noon at intersections on Locust, Spruce, Pine, or Lombard Streets, where they cross the numbered streets.

Wherever signs are posted, cars must be moved to the opposite side of the street after 6 p.m. on Friday night, or they could be ticketed on Saturday morning beginning at 8 a.m. Please

note that to accommodate Saturday synagogue services, the 300, 400 and 500 blocks of both Spruce and Lombard Streets will be swept by 8:30 a.m. — leaving the south side of these streets available for congregants to park their cars.

All streets will be swept from Front to 8th and from Walnut to Lombard Streets, not including Walnut Street. There will be no parking on either side of the 300 and 400 blocks of Front Street or the 200 and 300 blocks of 2nd Street and Lawrence Court.

Although "Other Side Parking" signs will generally read "from 6 p.m. Friday until 3 p.m. Saturday," Society Hill's Block Coordinators are encouraged to remove these signs as near to 1 p.m. as possible — in order to permit cars to be moved back to their usual side of the street between 1 p.m. and 3 p.m. and prevent those cars from getting ticketed.



**President Bob Curley sweeps up leaves on Clean-Up Day.**

### SHREDDING AND RECYCLING

#### **St. Peter's School Parking Lot**

3rd and Lombard Streets

November 14, 10 a.m. to 1 p.m.

(earlier if the truck reaches capacity)

SHCA is sponsoring paper-shredding and electronic recycling services on the November 14 Clean-Up Day. The shredding service is for the convenience of Society Hill residents only — sorry, no businesses. It is only for confidential materials; non-confidential papers should be recycled, not shredded.

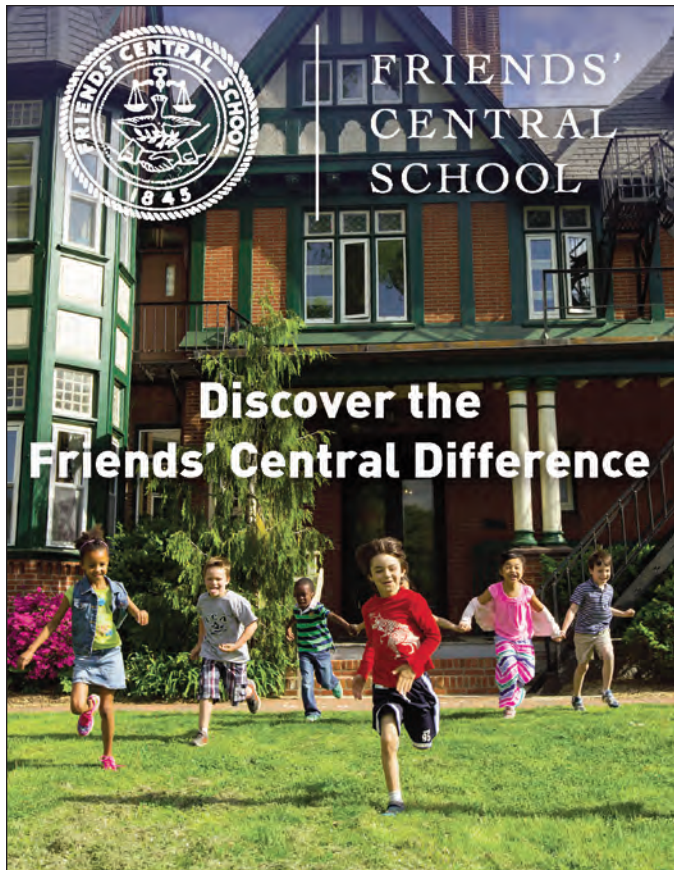
- Only paper is accepted. No CDs or disks.
- Electronic recycling will take anything with a plug, except televisions and computer monitors.

- No large appliances like refrigerators or washing machines. Also, no smoke detectors.

In previous years, neighbors could donate new and gently used childrens' clothes, coats and books and school supplies to Cradles to Crayons. This year, donations should be made on November 14 to a drop-off site (Silicon Gallery Fine Art Prints) at 139 N. 3rd Street.

If you use these special services and are not yet an SHCA member, please consider joining SHCA by simply filling out the form, either on page 25 of this newsletter or online at [societyhillcivic.org](http://societyhillcivic.org). Any questions? Call 215-629-1288.





**FRIENDS' CENTRAL SCHOOL**

Discover the Friends' Central Difference

friendscentral.org

SINCE 1980

**NATIONAL WATCH & DIAMOND**  
Visit our website at NationalWatch.com



PRE-OWNED ROLEX, CARTIER, BREITLING & MORE!

**OVER 400 ROLEX IN STOCK**  
ROLEX REPAIR & REFINISHING - ONE YEAR WARRANTY  
WE BUY GOLD, SILVER & DIAMONDS

**(215)627-WATCH** 8th & Chestnut Streets  
Philadelphia, PA 19106

N.W.E. IS NOT AN OFFICIAL ROLEX JEWELER

**Society Hill's Computer/IT Help Desk**



- Hopkinson House / Wash. Sq. Location
- FREE Phone Consultation
- Affordable Hourly Service Rates
- Over 25 Years of Computer Experience
- Social Media, Internet Marketing
- Data Recovery, Hardware Support
- Quickbooks, Office, Email Training
- Support with all Mobile Devices

<b>20% Society Hill Discount</b>	WiFi / Firewall	PC Repair Rebuild Replace
	Network Security Malware / Anti-Virus Website Development Email / Website Setup	

**215-592-1600**  
HelpDesk@Compuweb.com

**WE PICK UP FURNITURE DONATIONS**  
FAST | FREE | TAX-DEDUCTIBLE

MOVING? DOWNSIZING? REMODELING?  
Your donation supports self-determination in the hands of the African community.

 Tyron Lewis Community Gym	 Uhuru Health Fest	 Uhuru Jiko Kitchen
--	---	--

**UHURU FURNITURE & COLLECTIBLES**  
...driven by African self-determination

uhurufurniturephilly.blogspot.com

215-546-9616 | 832 N. Broad St | www.apedf.org

An economic development project of the African People's Education and Defense Fund



5TH STREET COMMITTEE UPDATE

# Super Fresh Store Sale November 15

On July 30, Society Hill Shopping Center Limited Partnership, the current owner of 309-37 South 5th Street (Super Fresh Site) applied for a zoning use permit. The application was made with the participation of Alterra Property Group, LLC (“Alterra”), which has a contract to purchase the Super Fresh Site and the retail strip center at 314-26 South 5th Street.

The permit was granted on August 27. It was granted by Philadelphia Licenses and Inspections (L&I) “as of right,” as L&I determined that the description of the project in the Permit complied with the requirements of the Super Fresh Site’s CMX-2 zoning classification.

No variances were requested. The project described in the Permit Application, Plans filed with the Application and Permit (“Permit Package”), is for an addition to the existing building having a footprint of 5,172 square feet, attached to the north side of the existing building, and an addition of a second and third floor above the new north side addition and the existing building. The proposed use described in the Permit Package was “retail food store (as existing), and pharmacy, sundries and convenience store, with multi-family housing with 36 units on the 2nd and 3rd floors.” There will also be eight accessory parking spaces for cars. The plans show the pharmacy, sundries and convenience store in the north side addition and a supermarket in the existing ground floor space. The Permit Package is available by email from Matt DeJulio at mattdejulio@aol.com.

The Permit was an “as right” zoning use permit granted by L&I. No notice of this type of permit is required, other than a posting for 30 days on the street frontages of the property to which the permit applies. When contacted, Alterra stated that the Permit was posted on the Lawrence Court side of the building.

The Committee is consulting with its attorney Richard DeMarco to determine if it would be advisable to file an appeal of the Permit. The Permit did not require the prior approval of the Historical Commission. Before any construction can start, a building permit will have to be obtained and a full complement of construction drawings filed. The Historical Commission is required to review, comment on and hold a hearing on the building permit application prior to issuance of the building permit. The building

to be constructed also must conform to the building and zoning codes.

The Committee has held meetings to review the zoning classifications of properties in Society Hill that are not aligned with their current uses. A goal of the Committee is to have the Planning Commission initiate a remapping of Society Hill to correct the identified zoning mismatches. The Planning Commission had previously notified the Society Hill Civic Association that Society Hill would be the last area to have its zoning classifications examined (remapped), and the remapping is not currently scheduled. The Committee is currently preparing materials to support a request to Councilman Mark Squilla that the Planning Commission accelerate the remapping of Society Hill.

The Committee is also meeting to develop ideas for zoning overlay for Society Hill. The goal of implementing a zoning overlay is to protect our community’s unique character. The Committee will be considering what items an overlay should address and what items may be legally included in an overlay.

Once these initiatives are prepared and ready for presentation, it will be important for the community-at-large to support them.

The bankruptcy court of the Southern District of New York, presiding over the A&P bankruptcy, has approved the sale of the Super Fresh and other stores to be purchased by Acme Stores. We have been advised by Alterra that the sale and takeover of the 5th Street Super Fresh Store will take place on November 15.



**COSMOS**  
FINE NAIL SALON  
PHILADELPHIA'S SALON FOR MEN & WOMEN  
[NAILS ~ WAXING ~ MASSAGE]

<b>1204 walnut street</b>	<b>1308 sansom street</b>
(215) 627 - 1020	(215) 545 - 5456
mon-wed: 930a - 700p	mon-wed: 930a - 700p
thurs-fri: 930a - 800p	thurs-fri: 930a - 700p
sat: 930a - 600p	sat: 930a - 600p
sun: 930a - 600p	sun: closed

Ⓜ RESERVATIONS RECOMMENDED Ⓜ



*All Gloria Dei's venerable trees remained standing in Hurricane Sandy, preserving the historic graves below.*

## HISTORIC TREES UNHURT IN HURRICANE SANDY

**... Thanks to Liberty Tree & Landscape Management**

When Hurricane Sandy pummeled the city in late October, 2012, not one of the many 200+-year-old trees at Gloria Dei Church on Columbus Blvd. came down. Pastor Joy Segal credits that feat to the outstanding work of Liberty Tree and Landscape Management.

See why so many people recommend Liberty Tree on Angie's List. *Your satisfaction is guaranteed!*

### Some Other Liberty Tree Clients:

- |                                  |                              |
|----------------------------------|------------------------------|
| <i>Pennsylvania Hospital</i>     | <i>Elfreth's Alley</i>       |
| <i>Rittenhouse Square</i>        | <i>National Park Service</i> |
| <i>Washington Square</i>         | <i>Bartram's Garden</i>      |
| <i>Philadelphia Cricket Club</i> |                              |



215. 886. 6111 | Orelan, Pa  
 215. 725. 3637 | Philadelphia, Pa  
 215. 572. 6937 | Fax  
[www.libertytreecare.com](http://www.libertytreecare.com)

**Mike Duffy**  
 Certified Arborist  
 PD-1766A



## FOR SALE



**Kohler & Campbell**  
**Premium Console By Samick**  
**\$3,000**  
**Call Now 215-990-7091**



## COMMUNICATION MADE EASY



ON DEMAND PRINTING SOLUTIONS

Media Copy is a full service digital printing company with offices in Center City Philadelphia, and the suburbs. State of the art technology, extraordinary customer service and attention to detail place us apart from the competition. Our infrastructure allows us to provide our customers with high quality products in a cost effective fashion. From conception to completion, the basic to the complex, we are on the job with the personal attention you should expect.

**Philadelphia Location:**  
 1310 Sansom Street · Philadelphia, PA 19107  
 phone: 215.717.5151 · fax: 215.717.7400

**Media Location:**  
 11 East State Street · Media, PA 19063  
 phone: 610.566.8499 · fax: 610.566.4513

[www.mediacopyonline.com](http://www.mediacopyonline.com)



**Performance of Urban Street Trees**

An old article from the *Journal of Arboriculture* (May 1981) recently came to our attention, and we thought it worth revisiting.

In 1965, the George Patton, Inc. landscape architectural design firm planned a 22-block street tree planting project for the Washington Square East Redevelopment Area. During August and September 1979, 414 trees of 23 different species were individually evaluated. This article discusses the performance of 15 of those species.

Six stand out due to their good growth rate and general freedom from pests and diseases. They are ginkgo, Kwanzan oriental cherry, black locust, English oak, Japanese pagoda tree and Chinese elm. Many still grace our neighborhood with shade and beauty, and most would make

excellent choices for new plantings.

In contrast, two of the most widely planted street trees in the northeast, Norway maple and little-leaf linden, were among the lowest-rated of the species tested.

Paul W. Meyer, the F. Otto Haas Executive Director of the Morris Arboretum, provided an update for those trees evaluated in 1979. The ginkgo are long-lived and have held up well. Most of the black locust died from borer. The English oak, Japanese pagoda tree and Chinese elm are generally looking good. Although lovely, the Kwanzan oriental cherry has proven to be short-lived.

Hopefully, this information will be helpful in informing your landscaping decisions.



**Chinese elm at 2nd and Pine Streets**

**Time to Play Hooky!**

Dust off those casting rods and call in sick! Philly has a brand-new fishing hole, and it's just outside our neighborhood.

Pier 68 Park is the latest development of the Delaware River Waterfront Corporation's (DRWC) Master Plan for the Central Delaware, which aims to turn six miles of the Central Delaware River waterfront into a fully developed public space.

Accessed through the outside edge of Walmart's parking lot on Columbus Avenue, it's a place to relax and enjoy the distinctive views of the city skyline and the river, a place to learn about the tidal ecology of the Delaware River and its watershed, and a place for recreational fishing and public gathering.

Visitors enter the park through colorful striped posts and an original old bollard and then move through a grove of trees. An "aquatic cut" designed to support a tidal wetlands is in the center of the pier. Along the aquatic cut's northern edge is a

path by the water. To its south is an area for picnic tables and benches. Beyond the picnic area is a soft, sloping lawn. Pier 68 then opens up to a plaza facing the river.

At the pier's end are five granite benches facing the water, placed with fishing in mind. The granite blocks are relics recycled from Penn's Landing and have been adapted with angled holes to hold angler's poles. The old pier pilings beyond provide a welcome habitat for the river's fish; 23 species have been found in this area.

Pier 68 and Washington Avenue Pier serve as bookends to the southern portion of the Delaware River Trail. A recent land acquisition means that DRWC is one step away from building out the trail to its full specifications, including separate bike and pedestrian facilities, beautiful landscaping and distinctive furnishings and lighting.



**Pier 68 Park**



# SONOS

ENJOY ALL OF YOUR MUSIC,  
IN EVERY ROOM OF YOUR HOME,  
WIRELESSLY.

---

No wires and no drilling.  
Ask for a **FREE** in home consultation.



Apple Specialist

116 S. 13th Street  
Philadelphia, PA  
215-599-0794  
springboardmedia.com




**QUEEN VILLAGE  
FAMILY DENTISTRY**

**JEFF CABOT, DMD**

[WWW.QUEENVILLAGEFAMILYDENTISTRY.COM](http://WWW.QUEENVILLAGEFAMILYDENTISTRY.COM)

**215-925-7330** 

**Old Pine Street Church**  
Established 1768



Where History, Faith,  
Message, Music &  
Fellowship intersect at

412 Pine Street  
Sunday Worship  
10:30am  
215-925-8051  
[www.oldpine.org](http://www.oldpine.org)

**R. Chobert Decorating Co.**

*Painting/Wallcovering  
Interior/Exterior  
Creating Beauty Since 1967*




**Rupert Chobert**  
641 Reed Street  
215.389.7788 TEL  
267.977.7443 CELL  
215.755.6655 FAX

*Creating harmony in body and mind*

*Judy Moon  
and Associates*

**CONVENIENT, RELAXING MASSAGE THERAPY**  
Washington Square South  
in the Hopkinson House

ABMP Certified 287.671.0861 [www.judymoon.com](http://www.judymoon.com)



*The* **CENTER  
for GROWTH**  
psychological counseling • therapy • support groups

**Is Your Life Unmanageable?  
Or, Are You Simply Seeking A Coach  
To Help You Make Better Decisions?  
We Can Help.**

- Individual Therapy
- Couples Therapy
- Family Therapy
- Play Therapy
- Parenting Support Group

Present this ad at your 1<sup>st</sup> session & your 2<sup>nd</sup> session is FREE.

233 S. 6th Street, Suite C33  
Philadelphia, PA19106  
[www.therapyinphiladelphia.com](http://www.therapyinphiladelphia.com) • (267) 324-9564

**ADORNAMENTI**

1106 Pine Street  
215.922.2722

**Collection  
of  
Art-To-Wear Jewelry**



**SHOW OF HANDS**

1006 Pine Street  
215-592-4010

**Collection  
of  
Mid-Century Murano Glass  
and  
Contemporary Crafts**



We contribute to Welcome Basket.  
We are located on Historic Antique Row.



QUALITY OF LIFE

BY MARTHA LEVINE

# How Does Society Hill Measure Up?

Cleanliness, safety and attractiveness are a few of the factors that contribute to a neighborhood's high quality of life. These are some of the ways SHCA has tried to fulfill these goals.

**Weekly Sidewalk Cleaning**

SHCA pays to keep our sidewalks free of debris through a contract with Center City District, which provides uniformed cleaners on trash collection days.

**Graffiti Removal**

Our neighborhood is free from graffiti, thanks to Todd Kelley, who surveys our streets weekly and removes all graffiti almost as soon as it appears. If you see public spaces vandalized with graffiti, email him at: [todd@graffiti-removalexperts.com](mailto:todd@graffiti-removalexperts.com).

**Sidewalk Safety**

SHCA's "Fix the Brix" program offers an incentive to homeowners to level their sidewalks: a subsidy of 40 percent of the total bill, up to \$400 for SHCA members and \$300 for nonmembers. So far, 140 households have participated, resulting in safer sidewalks for all.

**Security**

In 2007, SHCA greatly improved the amount of light we have on our streets. Good light aids in deterring crime. Through a fundraising campaign, we raised \$600,000 to replace our 500 Franklin Lights with a new, updated version with double the wattage output.

**Crime Prevention**

SHCA keeps neighbors informed through our weekly crime report received directly from the 6th Police District's Captain Korn. SHCA's Safe and Sound committee works closely with the

police to address any increase in crime, with the assurance of additional patrols when needed.

**Zoning and Historic Preservation Committee**

To maintain the integrity of a historic district, our Zoning and Historic Preservation Committee (ZHP) monitors any changes that homeowners wish to make to their house exteriors. ZHP also works to keep inappropriate development from happening within our neighborhood, including limiting the height of new construction to the lowest possible level as permitted by its zoning designation, such as for high-rise condos or apartments.

**Communication**

The *Reporter* is published and distributed six times a year, providing a variety of important community information. Our weekly email blasts provide similar information on a timelier basis.

**Parking Spaces**

SHCA will soon be providing an opportunity for a community parking lot at Front and Lombard Streets. Neighbors will be able to lease spaces and park at a fair rate.

**Welcome Baskets**

Isn't it nice to be welcomed into a new neighborhood with a Welcome Basket? So far we have presented 750 baskets.

**Tree Subsidy**

Anyone wishing to plant a tree in front of their home may receive a subsidy of \$150.

**Martha Levine**, an active SHCA board member, has created and chaired many projects, such as Welcome Baskets, Block Coordinators, "Fix the Brix," and the Franklin lights restoration project. She also co-chairs the yearly house tour.



Graffiti Removal



SAFE AND SOUND IN SOCIETY HILL

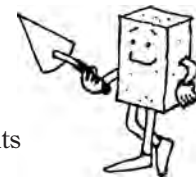
BY MARILYN APPEL

Hope you all had a great summer. I'm sorry I could not write for the last *Reporter*, but it's a sad story. At the beginning of August, I fell flat on my face into the street (in front of a bus — which, fortunately, stopped). I was hurt badly and housebound for seven weeks. Two things caused the accident: I tripped over the uneven sidewalk, and my shoe came off, causing me to lose my balance.

How often have you tripped on loose or uneven bricks? We cannot be safe and sound in Society

Hill unless we can walk without trepidation on our sidewalks.

This is a call to arms, everyone! We, as a community, have to get the City to fix the potholes (keep reporting specific locations to 311) and we have to get you, the residents of Society Hill, to "fix the brix."



Rick the Brick

**Marilyn Appel** has served as chair of our 6th District's Police District Advisory Council since 1980.

**DAMON MICHELS, REALTOR**



cell 610.731.9300  
office 610.668.3400  
Damon@DamonMichels.com  
www.DamonMichels.com

*Specializing in The Main Line  
and Center City*

**180 HOMES SOLD IN 2014!**

**BERKSHIRE HATHAWAY** | **Fox & Roach, REALTORS®**  
HomeServices

**Intelligent Exercise with Profound Results!**

New client special:  
Three one-hour private sessions for \$125.00 at our fully equipped Center City studio at 9th and Spruce Streets.



*PilatesByPamela*

Stott Pilates Certified Instructor  
267-519-3639  
pilatesbypamela@gmail.com

www.pilatesbypamela.com



**Jan Stephano** ABR, CSR, CNE

*Lives, Knows,  
Sells Center City!*

**44 years your neighbor  
27 years your realtor**

**Plumer**   
& Associates, Inc.  
Realtors

**215.922.3600 x219**  
jstephano@plumerre.com

www.janstephano.com

**Piano Lessons**  
for all ages

**Beiling Foss**  
Piano Teacher

931 E Moyamensing Ave.  
Philadelphia, PA 19147

(440) 289-6289

dolce86@ymail.com




**YOU'RE MAKING MOVES. LET US DO THE WORK.**



We love Philadelphia.  
We know the neighborhoods. With over 27 years of experience, we're experts at what we do.

The McCann Team will provide you with a free estimate of value for your home.  
No cost, obligation or hassle!

Check out our video to get to know Mike & his team - you can find it at [www.mccannteam.com](http://www.mccannteam.com)! While you're there, see what our clients have to say!

**Call us or visit our website. We can't wait to hear from you!**

Mike McCann "The Real Estate Man" and The McCann Team

**BERKSHIRE HATHAWAY**  
HomeServices  
Fox & Roach, REALTORS®

Direct: 215.440.8345      [www.McCannTeam.com](http://www.McCannTeam.com)      Office: 215.627.6005



## EXPLORING THE CITY

BY JIM MURPHY

## The Library Company of Philadelphia

Like so many things in our city, the Library Company of Philadelphia (LCP) was a Ben Franklin creation.

He started the Junto, a self-improvement club that debated morals, politics and natural philosophy. When members realized they needed printed matter to prove their points, Franklin and the Junto began the Library Company of Philadelphia, the first subscription library in the U.S.

A typically pragmatic Franklin solution, LCP allowed members to pool their resources to buy books from London, something they could not afford on their own.

In 1731, 50 subscribers agreed to put up 40 shillings to maintain a shareholder's library, plus 10 shillings a year after that. You can still buy a share today for \$200.

Franklin called LCP "the Mother of all American Subscription Libraries," and until the Civil War, it was the largest public library in the U.S. Non-members could borrow books, too, with collateral.

Dr. Richard S. Newman, director of LCP, says that unlike European libraries that served scholars and noblemen, its members were artisans. So most early LCP purchases were useful books written in English, not Latin or Greek.

### Interesting Oddities

**Valuable Trash:** One of the library's real treasures, "The South East Prospect of the City of Philadelphia," was found by a member of Parliament "in the rubbish of a London curiosity shop" about 1867. He gave it to George Mifflin Dallas, then a U.S. minister at the Court of St. James, who sent "the antique daub" back to Philadelphia as a curiosity. This circa 1720 oil painting by Peter Cooper is now the oldest surviving canvas of any American city and among the most valuable of all Philadelphia paintings.

**Book Theft:** Shortly before the Cooper painting arrived, the Library Company began experiencing some loss. Then books belonging to the library were discovered at an auction "with the labels partially erased or concealed." The thief was William Linn Brown, the son of a noted author. He was immediately banned from the library.

**First Public Art in Philadelphia:** A statue of Ben Franklin first placed outside the Library at 5th Street was eventually moved to LCP's current

location. Over time, part of the statue was damaged. What you don't see now in his right hand is a scepter, pointing downward to indicate Franklin's opposition to the monarchy.

### Some Top Holdings

*The Magna Carta* — Franklin's personal copy in Latin, an edition printed in London in 1556 — the gold standard of liberty documents.

An edition of *Euclid* in Arabic, published in Rome in 1594, formerly owned by James Logan — with his handwritten notes in Arabic.

*A Narrative of the Proceedings of the Black People, During the Late Awful Calamity in Philadelphia, in the Year 1793* by Absalom Jones and Richard Allen — likely the first copyrighted piece by African Americans in the U.S.

### Pioneering Collections

1969 – Negro History: 1553-1903. Now called the Program in African American History, this collection has attracted more scholars from greater distances than any other at LCP.

1974 – Women, 1500 to 1900. This is one of the library's most active areas of collecting.

### Exhibitions

As part of its outreach, LCP produces two exhibitions a year. The latest, Fashioning Philadelphia, runs till March 4, 2016. Some 37 others are online.

**Jim Murphy**, a freelance direct-response copywriter, has run his own marketing consulting business since 2004. He's also a certified member of the Association of Philadelphia Tour Guides.

*If you're looking for books, prints, periodicals, photos or ephemera from Colonial America through the 19th Century, this is the place to go!*



**This ad for Harrison's Musk Cologne, 10 S. 7th Street, appears in the "Fashioning Philadelphia" exhibit.**

### FAST FACTS

**Name:** The Library Company of Philadelphia

**Address:** 1314 Locust Street, Phila., PA 19107

**Year Founded:** 1731 by Ben Franklin

**What's Inside:** An extensive, non-circulating collection of rare books, manuscripts and graphics, including 17th to 19th-century broadsides, ephemera, prints, photos and works of art on American history and culture.

**Nine:** Number of signers of the Declaration of Independence who were Library members. For many years, LCP was the de facto Library of Congress.

**Admission:** Free

**Hours:** Reading Room and Gallery: 9 a.m. – 4:45 p.m., Weekdays; Print Room: By Appointment Only

**Number of Visiting Scholars:** 900, many who stay next door at 1320 Locust St., LCP's Fellowship Residence in the former Cassatt House.

**Phone:** (215) 546-3181

**Website:** [www.librarycompany.org](http://www.librarycompany.org)

**Renovation alert:** Check the website. Library material may be inaccessible from November 23, 2015 to January 8, 2016.

OUT AND ABOUT

PHOTOGRAPHS BY BONNIE HALDA

# Tricks, Treats and Little Streets

Charming little streets like Delancey, American and Philip help to give Society Hill its special personality. Add hundreds of

little (and sometimes big) ghosts and goblins, and we have an annual community event like none other in the city!



**Bonnie Halda** is a freelance photographer specializing in historic buildings and the urban environment. She's also a historical architect with the Northeast Regional Office of the National Park Service.



OUT AND ABOUT

PHOTOGRAPHS BY BONNIE HALDA

Tricks, Treats and Little Streets



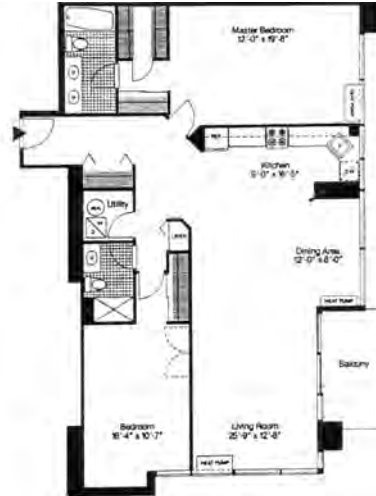
# INDEPENDENCE PLACE

233 - 241 S. 6TH STREET



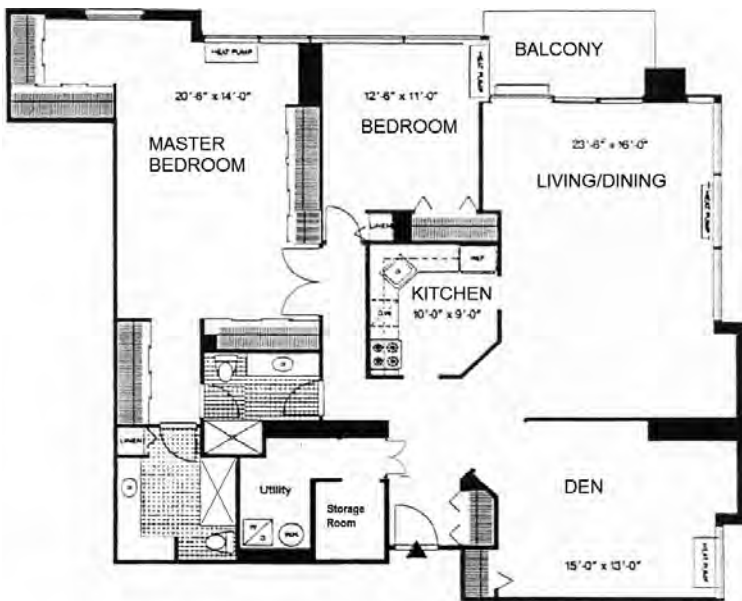
### Magnificently Renovated One Bedroom Home

One bedroom, one and half bathroom with gourmet kitchen, spacious dining and living room with access to a balcony. The master bedroom has walnut hardwood floors throughout, huge walk-in closet, office nook and a marble appointed ensuite bathroom. 1,118 sf | **\$459,900**



### Two Bedroom on a High Floor with a balcony and sunset views

Recently updated two bedroom, two bathroom with a bright and spacious living room and dining room, upgraded kitchen with dark cherry cabinetry, stainless steel appliances and granite countertops, excellent closet space throughout. 1,387 sf | **\$769,900**



### Two Bedroom with a balcony and sunset views

Corner two bedroom plus den, two bathroom with a private balcony, a living room and dining room offering floor-to-ceiling windows offering breathtaking river views, a recently renovated kitchen and updated bathrooms. 1,734 sf | **\$895,000**



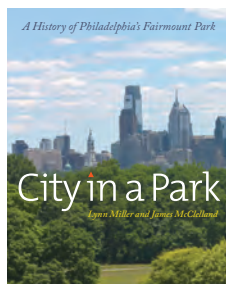
## ON OUR SHELF

BY RICHARD DE WYNGAERT

## My 2015 Holiday Picks

**Philadelphia****Love: A Philadelphia Affair by Beth Kephart**

Beth Kephart, a longtime resident and lover of Philadelphia, is an exceptional writer. She has compiled a truly personal and inspiring collection of photographs and essays that bring to life the remarkable pulse and beauty of her beloved city. She expresses poetically the meaning and significance of Philadelphia's architecture and history, the rich diversity of its citizens and the contributing flavors of its many neighborhoods. For the Philly aficionado.

**City in a Park: A History of Philadelphia's Fairmount Park System**

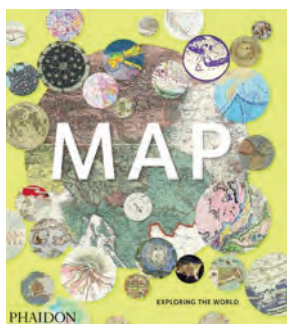
by Lynn Miller and James McClelland

Richly illustrated and lyrically composed, this remarkably detailed and extensively researched beautiful book explores the nature, 200-year history and extensive reach of Philadelphia's municipal park system. For the nature lover who also loves the subway!

**Non-Fiction****The High Line**

by Joshua David and Robert Hammond

The High Line, the transformative park above New York City, is now one of its most beloved and visited places. This incredible book showcases the compelling vision and creative journey that shaped the original proposal, including hundreds of photographs and previously unpublished archival materials that forced the re-imagining of urban spaces. For the urban romantic!

**Map: Exploring the World**

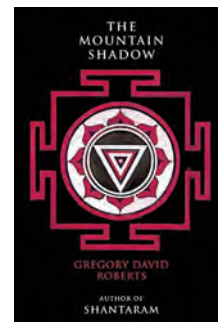
This book represents over 5,000 years of cartographic innovation, lavishly brought to life in a stunning showcase of 300 maps. The book's format highlights the often-overlooked connections between eras, and illustrates parallel influences among regions and cultures. A wonderful gift for the cartographer in your family!

**Last Night's Reading by Kate Gavino**

A delightful, charming book chronicling the New York literary scene. The author attended hundreds of readings in New York City, in wide-ranging venues. In this wonderful book, she shares her impressions of those evenings. The illustrations, simple watercolor renderings of the authors accompanied by their funny, insightful quotes, create a treasure you may never want to give away. A gift for yourself!

**Fiction****The Mountain Shadow**  
by David Gregory Roberts

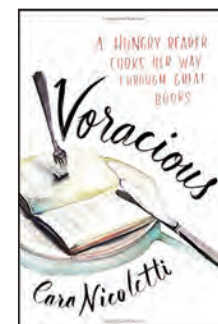
For fans of Roberts' first novel *Shantaram*, which has an almost a cult-like following, the wait for a sequel is over. Lin, both a caretaker of souls and an underworld assassin, returns from a two-year smuggling expedition to discover the Mafia lords who run Bombay have changed, those closest to him dead or missing, and the rules by which Lin operated in a city he loved are no longer relevant. The new order is characterized by savage brutality.

**The Blue Guitar: A Novel by John Banville**

How do we become who we are? The puzzling elements of the human condition are a mystery that John Banville, winner of the Man Booker Prize, returns to often and explores majestically. This existential query is observed and dissected through Oliver Otway Orme, a semi-famous artist and petty thief suffering from a midlife crisis. He returns to his childhood home, sifting through painful memories in search of some truth. The combination of reading the splendid writing of John Banville and digesting the piercing insights revealed through his characters is a gift that needs no ribbon.

**Culinary****Voracious by Cara Nicoletti**

In this exquisite collection of beautifully illustrated essays, the author brings to life the stories she loved (*Pride and Prejudice*, *Lord of the Flies*) through the recipes they inspired in her while she was a young, insatiable reader working in her family's butcher shop. This book is a wonderful memoir that will surely entertain and satisfy that someone on your list who loves great literature and great food — isn't that all of us?

**The Nordic Cookbook by Magnus Nilsson**

With over 700 recipes of acclaimed Swedish Chef Magnus Nilsson, illustrated with his own photographs, *The Nordic Cookbook* provides a wonderful look at the rich history, culinary techniques and offerings of the Nordic region. For the culinary nomad!

**Bring this article to Head House Books and receive 20 percent off any hardcover fiction and nonfiction title in the store, or have Headhouse Books donate the 20 percent to SHCA on your behalf.**

**Richard De Wyngaert** is the proprietor of Head House Books, Society Hill's only local, independently owned bookstore, located at 619 South 2nd Street.



604 S. WASHINGTON SQUARE

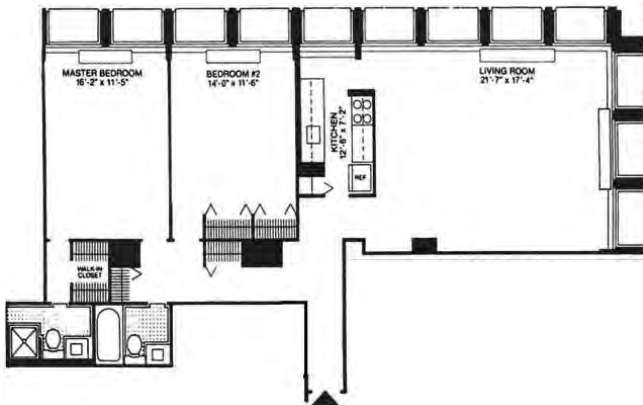


**One Bedroom High Floor with Washington Square Views**

Large, one bedroom on a high floor with a balcony, hardwood floors, great closet space panoramic views. 843 sf | \$310,000



200-220 LOCUST STREET



**Spacious Two Bedroom with Treetop River and City Views**

Two bedroom, two bathroom residence with floor-to-ceiling windows in all rooms offering intimate Delaware River views to the east and treetop city views to the north, as well as an expansive open dining room and living room with ample light and generous space for entertaining. 1,200 sf | \$450,000

**THE LIPPINCOTT**

227 S. 6TH STREET



**Totally Custom Three Bedroom Plus Den**

Three bedroom plus den, three bathroom custom built residence with a balcony and private roof deck, as well as an open chef's kitchen, exposed brick walls and designer bathrooms. 2,306 sf | \$2,250,000



PHILADELPHIA'S LARGEST SELLING CONDOMINIUM REALTOR® WE COOPERATE WITH ALL REALTORS®  
1845 Walnut Street, Suite 2200, Philadelphia, PA 19103 Phone: 215.545.1500 allandomb.com domb@allandomb.com



## SOUTH STREET HEADHOUSE DISTRICT

BY CLAIRE BATTEN

## Working Up an Appetite

**M**y business partner and fellow *Reporter* columnist Keri White and I decided to take a kickboxing lesson. As we walked along the 700 block of South Street, it was hard to miss the 10-foot tall photos of models with washboard abs staring out from the storefront of ILoveKickboxing.

This kickboxing franchise, which has operations around the U.S., including New York, Miami, and even Texas, opened this summer and already boasts 250 members.

**Kickboxing is hot these days!**

Enjoy a grueling hour-long class at the South Street kickboxing studio. Stick with this intense regime and you, too, may one day be sporting glistening abs like the models in the photos.

We were shepherded around the studio and onto the mats — everyone boxes barefoot — by a petite instructor. Katie, a former student who now teaches at the studio, explained, “I used to sit in my car thinking, ‘do I really want to go?’ because it is daunting at first, but I stuck with it, and now I preach it, because I lived it.”

Indeed, kickboxing is a way of life for both teachers and the students; this is reflected in the packages offered by ilovekickboxing.

Want to give it a go? Try the three-session special for \$19.99, and, believe it or not, the studio gives your very own 12 oz. leather boxing gloves — free of charge. Want to take it further? Sign up for a seven-month commitment comprised of six payments at \$149 each. This may sound pricey, but classes are unlimited. It’s up to you to make the most of this package. If you love it, then sign up for one year and get a month free. The watchword for the studio is “commitment.” How hard do you want to work? How fit do you want to get?

ILoveKickBoxing is ideal for people who enjoy the burn from the gym, but are just bored. As Katie notes, “Instead of lifting weights, you get to hit a punchbag, which feels good at the end of a tough day!” As parents of teen-aged kids, Keri and I understand the cathartic opportunity that kickboxing represents.

**The Sweet Life**

All that kicking certainly worked up an appetite. Fortunately, right next door to the kickboxing studio is a new cupcake and bakeshop called The Sweet Life. Run by a former fashion student,



**The gloves are on. Get ready to kickbox, ladies!**



**The cupcakes are waiting.**

Megan Kennedy, the shop features cakes and puddings that resonate with Megan’s childhood.

The business is a family affair, as Megan described to us: “We started out over five years ago, and I used family recipes, such as my Nana’s sweet potato pie and my mother’s banana pudding, and we’ve grown from there.” Even Megan’s husband has a hand in the baking; he is responsible for the fluffy buttercream icing on all the cupcakes. If you like pudding, then you’ll think you’ve died and gone to heaven.

The original banana pudding now comes in a banana-and-strawberry flavor. Think of a trifle-like confection made of perfect light custard and fresh fruit that is oh-so-creamy. Flavors also include the best-selling banana and caramel-topped pudding and a seasonal addition of pumpkin custard.

Megan explained why she moved her business from Federal Street to South: “This is a great neighborhood for my business. I get a mix of tourists and locals, and then regulars, who know what they like. I’m glad I made the move.” To check out Megan’s mouthwatering delights, stop by The Sweet Life. The store will also make custom cakes, including birthday cakes, for special events.

**Claire Batten** and **Keri White** are the dynamic duo behind Philly Food Lovers. They are business partners in KCC, a marketing and copy-writing agency.

**iLoveKickboxing**

734 South Street  
ilovekickboxing.com  
215-687-4440

**The Sweet Life Bake Shop**

740 South Street  
215-717-7770

Remember,  
you can always  
go Kickboxing  
to burn off those  
extra calories!

# THE ESTATE HOME AT 4TH AND LOCUST



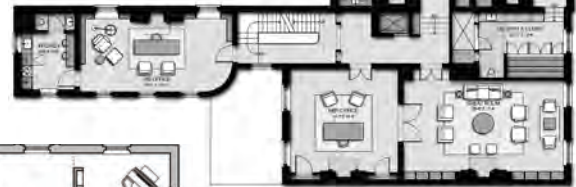
5th Floor



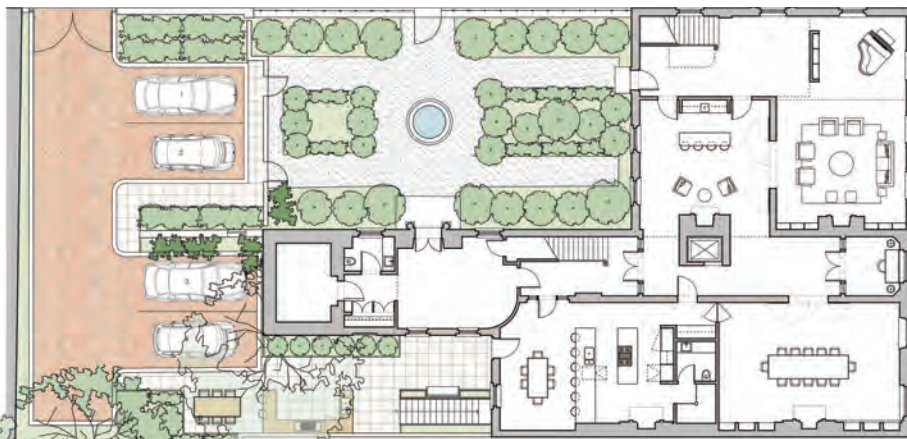
4th Floor



3rd Floor



2nd Floor



1st Floor



Once-in-a-lifetime opportunity to create the most spectacular estate home in all of Society Hill by combining The Shippen-Wistar House (built in 1750) and The Cadwalader House (built in 1829). These adjacent residences offer tremendous history, an unparalleled location in the heart of Society Hill, and endless possibilities in terms of layout and design. The Estate Home at 4th and Locust has a large private garden and approval for up to four parking spaces. For more information including images, a drone video and sample floor plans done by architect Cecil Baker, visit [www.allandomb.com](http://www.allandomb.com) or [www.shippen-wistar-cadwalader.com](http://www.shippen-wistar-cadwalader.com).

13,673 sf | \$5,500,000



**AD Allan Domb Real Estate**

PHILADELPHIA'S LARGEST SELLING CONDOMINIUM REALTOR® WE COOPERATE WITH ALL REALTORS®  
 1845 Walnut Street, Suite 2200, Philadelphia, PA 19103 Phone: 215.545.1500 [allandomb.com](http://allandomb.com) [domb@allandomb.com](mailto:domb@allandomb.com)



---

**HEADHOUSE FARMERS' MARKET**


---

BY KERI WHITE

## Festive Fall Must-Haves From the Market

Aimee Olexy, owner of Talula's Garden/Talula's Daily and a prominent fixture at the Headhouse Farmers' Market, was kind enough to take some time from her busy schedule to share thoughts on fall foods, holiday entertaining and "must-haves" from the Market.

When asked what autumn means, food-wise, Aimee answers, "Autumn is actually my favorite season. Yes, spring is a breath of fresh air and summer owns tomatoes and corn. But fall gleams for me, and Headhouse is becoming more resplendent every week."

### Festive Fall Tables

"Pies, crisps and cobblers," says Aimee, "are the foods I associate most with the holidays — and struggle to resist. I love apple and pumpkin pie. I love the smell of apples at Three Springs and Northstar in the Headhouse Market. Walking by without filling my bag is impossible!"

"I am always developing savory cobblers and crisps. These are something everyone raves about. They generally include cheese, which is critical for me, too!"

"Crisps showcase the ingredient in an interesting state — somewhere between cooked and still natural. And pies, crisps and cobblers really express the ingredient and sheer abundance clearly. That is a big mission in my home cooking and restaurant menus."

### Holiday Entertaining Tips

Aimee generously shared some entertaining tips, saying, "I love to hang out, drink wine and enjoy the festivities, too. So I do bake-ahead things I can finish with a little guest interaction. Pouring crepes or dipping small, handpicked apples in caramel are both really fun to do with friends. I use food to decorate with; it's colorful and aromatic. I think conversation pieces are important, too. I scatter some fun cookbooks and photos and funny drawings from my daughter or a nice poem printed out. I need a good, clear sound system — happy music. It's also important to consider your kitchen and equipment; if you have a small oven or limited burners, make sure you have some cold or room-temperature dishes on the menu."

### Headhouse Must-Haves

Aimee buys Asian pears every week for her



Aimee Olexy, owner of Talula's Garden/Talula's Daily



## HEADHOUSE MARKET SAVORY COBBLER

Heat oven to 375 degrees

### Filling

- 1 large cauliflower, sliced neatly and evenly
  - 2 Pink Lady or Honeycrisp apples, peeled, cored and sliced neatly and evenly
- ¼ pound unsalted butter  
cut in small pieces
- ¾ pound Birchrún Blue cheese  
drizzle of honey  
drizzle of apple cider  
a few sprigs fresh sage, torn  
sprinkle of freshly ground pepper

Toss ingredients into large, buttered baking dish. Set aside and make:

### Cobbler topping

- 1½ cups flour  
½ teaspoon salt  
1 tablespoon baking powder  
1 tablespoon sugar  
4 tablespoons unsalted butter  
1 cup heavy cream

Combine dry ingredients. Cut the butter into the mixture with pastry cutter, two butter knives or your hands. When mixture begins to hold together in pea-sized pieces, add the cream and mix until lightly moistened. Cover filling with tablespoon-sized dollops of dough and bake until bubbling and golden brown, about 35 minutes.

daughter's lunchbox — they stay bright and juicy and crisp. She loves cider and tells us, "I use it to make dressing." And this restaurateur purchases greens galore. Her final words of wisdom, in fact, are, "Eat your veggies, folks!"

---

**The Food Trust**, in partnership with Get Healthy Philly, operates more than 25 Farmers' Markets in Philadelphia, including the Headhouse Farmers' Market, Philadelphia's largest outdoor market. For more than 20 years, The Food Trust has been working to ensure that everyone has access to affordable, nutritious food and information to make healthy decisions. For further information, visit [www.thefoodtrust.org](http://www.thefoodtrust.org).

**Plumer & Associates, Inc.  
Realtors**

# Plumer

Center City's largest independent Realtor.  
Serving Philadelphia since 1923.

**Residential,  
Commercial,  
and Investment  
Real Estate**

For a complete listing of Center City properties visit our website:  
[www.plumerre.com](http://www.plumerre.com)

226 South Street, Philadelphia  
[info@plumerre.com](mailto:info@plumerre.com)  
**215 922 4200**




**Our record speaks for itself.**

**Kathy, Patrick and the  
Conway Team**

BERKSHIRE HATHAWAY HomeServices  
Fox & Roach, REALTORS

**conwayteam.com • [kathy@conwayteam.com](mailto:kathy@conwayteam.com)  
215-266-1537 • 215-627-6005**

## Mark J. Bojanowski / TEAM MJB Kurfiss Sotheby's International Realty

**Rittenhouse Square**



**237-47 S 18th St 18C, Philadelphia, PA 19103  
4 Br / 4.5 Ba / 3,000 sq. ft     \$1,999,999.00**

**The Barclay Unit, 18 C, D, E a combination of three "Hotel Units".**

**Center City**



**1414-38 S Penn Sq 5f, Philadelphia, PA 19102  
2 Br / 2.5 Ba / 1,655 sq. ft     \$1,150,000.00**

**Well priced like new corner unit overlooking City Hall and Dilworth Plaza.**

**The Finest Real Estate in the World!**



**Mark J Bojanowski 215.704.3994  
226 West Rittenhouse Square, Suite 102  
Philadelphia, Pennsylvania 19103  
Phone: 215.735.2225 office (Ask for Mark)**



## ‘FundRaising the Roof’

The Physick House Third Annual Wine and Beer party, “FundRaising the Roof,” was the best to date. Physick House was packed with Society Hill neighbors who support the mission to replace the 50-year-old roof on this magnificent 229-year-old landmark. If you have never visited 321 South 4th Street, be sure to do so. It’s open Thursdays to Sundays, 12 to 5 p.m.

While the live jazz band played, guests sipped wines from around the world served by a professional sommelier. Others enjoyed Yards Beer al fresco in the beautiful romantic garden, while they mingled with neighbors and friends.

Center stage was a full sumptuous buffet — no one went home hungry. The raffle that was held raised substantial funds.

Learn more about the FundRaising the Roof campaign at [Philalandmarks.org/PhysickHouse](http://Philalandmarks.org/PhysickHouse). To make a contribution, call 215-925-2251, ext. 1, then ext. 5, and speak to Jorja. Or send a check, made payable to Physick House/Landmarks, FundRaising the Roof, to Physick House, 321 South Fourth Street, Philadelphia, PA 19106.

Congratulations to chair, Martha Levine, and the entire Physick House Preservation Committee for a wonderful event.



**Aleni Pappas and Allison Taub**



**Malcolm Lazin, Diane Semingson, Ted Robb and guest**



**Lisa Breslin, Jacqueline Schultz and Phyllis Spivak**



**Katie O'Brien, Maria Whitman and Anthony Kyriakakis**



**Jim Oliver, Jane Napoli and Frank Signorello**



**Martha Levine, Mary Purcell, Rosanne and Kim Williams**



**Jay Borowsky, Barbara Gelman, Loretta and Jonathan Burton**

### Exercise and Socialize

Winter’s chilly mornings are no excuse to miss your exercise. Just bundle up and join one or both local groups for some walking and talking.

Tuesdays and Thursdays, 8:15 a.m.

“**Walkie/Talkies**” meet at Three Bears Park, Delancey Street between 2nd and 3rd Streets, for a one-hour stroll through our historic community. Anyone is welcome to participate in this non-stressful exercise and socialize program.

Mondays, Wednesdays, and Fridays, 8 a.m.

“**Philly Is Walking in the Park!**” meets at the fountain in the center of Washington Square, 6th and Locust, for a half-hour, self-paced walk through our historic, beautiful park, led by neighbor Dr. Lisa Unger. All are invited to join us.



**Congratulations to the walkers of “Philly is Walking in the Park!” who recently celebrated their three-year anniversary, along with the volunteers for this group and the medical speaker series “Society Hill – Hot and Healthy!” at Buddakan, 325 Chestnut Street.**



**SMART  
RESPONSIVE  
EXPERIENCED**

**Bari Shor  
Real Estate  
MatchMaker**

Whether you're selling or buying a home in amazing Center City, Bari Shor cares and *delivers* for you.

I am your neighbor, let me be your Realtor,<sup>®</sup> too!



**BERKSHIRE  
HATHAWAY**  
HomeServices

Fox & Roach, REALTORS<sup>®</sup>

215-790-5678  
Barishor@aol.com  
215-546-0550 x 5678

Top 6% of all Realtors in Prudential Network Nationwide  
Accredited Luxury Home Specialist  
Diamond Award

I am a professional, full-time real estate agent as well as your neighbor.

■ **PAMELA D. LAWS**

ABR, ALHS, SRES, ASP<sup>®</sup>



Like many of my clients, Society Hill is my home. I specialize in Center City because I love Philadelphia. Let me find the perfect townhome or condo for you!



**BERKSHIRE  
HATHAWAY** | Fox & Roach,  
HomeServices REALTORS<sup>®</sup>

215.790.5688 pam.laws@prufoxroach.com  
WWW.PHILADELPHIAPROPERTIES.NET

An independently owned and operated member of the Prudential Real Estate Affiliates, Inc.



**In Center City Real Estate  
there's one name to call**



**Izzy Sigman**

Named Philadelphia magazine  
Five Star Professional Real Estate Agent 2015

*Put my 25 years of experience to work for you!  
As an experienced agent I can help you navigate  
the market and negotiate the best deal.  
I will take the stress out of buying or selling your home*

- **Assisting empty nesters downsize & sell their homes is my specialty**
- **I will be by your side from listing to sale to move-out**
- **Working with my comprehensive team of professionals, I am prepared to help you get your home ready today!**

Call Izzy Sigman  
**Plumer**  
& Associates, Inc.  
Realtors  
226 South Street  
215-922-3600 x 228 Office  
215-806-6958 Mobile  
izzysigman@yahoo.com



**Hi Tech. Hi Touch.**

A Winning Combination – in Person and on the Web!

**For Rent: Hopkinson House Unit #2515** – Beautifully Renovated One Bedroom/One Bath (778 Sq Ft) facing South, Balcony off Living Room Spectacular Views! - \$1,950 includes all Utilities.

**302 D Lombard** – Terrific Level Condo – Renovated One Bedroom/One and a half Bath, Central Air; Wood Floors; Working Fireplace; Eat-in Kitchen. One of four Units in Building!

**Hopkinson House**

**Unit #2514** – Deluxe One Bedroom (1,063 Sq Ft) overlooking Washington Square – Needs TLC – Parquet Floors, Tons of Closets; Original Kitchen and Bath; No Balcony – PRICED TO SELL \$329,000!!!

**Unit #1800** – One Bedroom (778 Sq Ft) with Open Floor Plan, Facing South and Balcony off Bedroom

**Brought the Buyers**

**Unit #312** – Deluxe One Bedroom with Balcony accessible from Living Room and Bedroom overlooking Washington Square



**Unit #910** – Medium One Bedroom (843 Sq Ft) with Balcony overlooking Washington Square

**Unit #2605** – Deluxe One Bedroom (1,003 Sq Ft) with Balcony off Living Room, Facing South and Totally Upgraded

**Rosemary Fluehr**

Associate Broker, GRI

**BERKSHIRE  
HATHAWAY**  
HomeServices  
Fox & Roach, REALTORS<sup>®</sup>

215-514-9884 – Cell  
215-440-8195 – Direct  
215-627-6005 – Office  
rosemary.fluehr@foxroach.com  
www.rosemaryfluehr.com  
530 Walnut Street, Suite 260  
Philadelphia, PA 19106



MEMBERSHIP REPORT

BY MATT DE JULIO

# SHCA Membership Ends Up at All-Time High of 1,103

SHCA membership reached 1,103 by early October — an all-time high, surpassing the previous high of 1,076 in 2013. This year, 138 new members gave our membership rolls a big boost, up from 100 last year. Unfortunately, 77 folks failed to renew versus 106 non-renewals last year.

Renewal notices for 2016 were mailed on November 1. Please return your annual dues as soon as possible — before December 31 if you wish to be placed in a drawing for a gift certificate to a local restaurant. New members this year who joined after July 1 will be grandfathered through 2016.

As a **special incentive** to all new members who join at the \$100 Federal Friend level or above, we will provide a copy of the summary version of the Philadelphia Historical Commission’s *Register of Buildings* in the Society Hill Historic District.

Why is your membership so important? Besides providing funding for our many neighborhood improvement projects, such as graffiti control, weekly sidewalk cleaning and plantings in Washington Square, numbers speak volumes. When our board advocates on your behalf regarding zoning changes, real estate taxes, crime problems, ramp issues, trash receptacles, street lighting, bus re-routing, etc., it makes a greater impact if they can say they speak on behalf of the majority of residents.


**Remember the extra perks of membership:**

- Discounts at participating businesses
- An extra \$100 subsidy for fixing your bricks
- A free contractors’ list
- A free historic window decal for your house, along with a copy of the Historic Register
- Preferred pricing at social events, such as the Washington Square Affair
- A free copy of the updated *Historic Guide to Society Hill*, to be published this fall

Without member dues, SHCA would cease to function. Protect your neighborhood and your real estate investment. **Sign up today!**

Email [Mattdejulio@aol.com](mailto:Mattdejulio@aol.com) if you have any questions or wish to comment on why you are not a member. All comments will be shared with the board, which represents every quadrant in our unique, historic neighborhood.

**Matt De Julio** is a retired publishing executive. He has served SHCA as its administrator since 2001.



## Membership Application

---

Name \_\_\_\_\_

Address \_\_\_\_\_ Apt. # \_\_\_\_\_

City, State, Zip \_\_\_\_\_

Home Phone \_\_\_\_\_

Work Phone \_\_\_\_\_

Email (print clearly) \_\_\_\_\_

IMPORTANT: Today, most everyone communicates via email. Please be sure that we have your current email address — so that you can receive important updates between publication of our community newsletter. All SHCA emails will be judiciously screened, and rarely will we send emails more than once a week. Nor will we share your email address with anyone else. This convenient, 21st-century system helps save our civic association postage costs, while keeping you regularly informed.

**Residential Memberships**

\$ 50 Basic Household Membership

\$ 40 Senior/Student/Single

\$ 100 Federal Friend

\$ 150 Georgian Grantor

\$ 300 Jefferson Benefactor

\$ 500 Washington Benefactor

\$ 1,000 Benjamin Franklin Benefactor

**Business Memberships**

\$ 100 Institutions — 5+ employees

\$ 60 Institutions — fewer than 5 employees

**Additional Contributions**

\$ \_\_\_\_\_ Washington Square Beautification      \$ \_\_\_\_\_ Franklin Lights

\$ \_\_\_\_\_ Sidewalk Cleaning/Graffiti Removal      \$ \_\_\_\_\_ Tree Tenders

\$ \_\_\_\_\_ Zoning and Historic Preservation      \$ \_\_\_\_\_ McCall School

Total Enclosed \$ \_\_\_\_\_

Charge VISA/MasterCard:

Number \_\_\_\_\_ Exp Date \_\_\_\_\_

Signature \_\_\_\_\_

The following topics are of special interest to me. I welcome receipt of email updates on these topics.

Clean-Up Day

Washington Square

Zoning & Historic Preservation

Franklin Lights

Social Events

Fundraising

Dilworth House

Property Taxes

Local Crime

Reporter

Casino Issues

Incidents and Alerts

Please return completed application to:  
**Society Hill Civic Association, P.O. Box 63503, Philadelphia, PA 19147**

## NIFTY NEIGHBORS IN MY OWN BACKYARD

BY JANE BIBERMAN

## Stanley and Tricia Fleishman Carry On a Family Business

Fleishman Fabric customers are busily buying buttons, ribbons, buckles, threads, craft supplies, pocketbook hardware, leather, lace and beaded trims, as well as fabrics. The 4th Street fixture is about to celebrate its 91st anniversary. “My father, Harry, started the business when he was about 16 or 17,” says his son, Stanley. “He was working for some guys on Fabric Row, and when he earned enough money, he bought a car and started selling remnants out of the trunk.”

After he acquired a store, Harry’s business grew to include notions, which can encompass anything from sequins to shoulder pads. “My mother, Sylvia, was in charge of the dry cleaning and trimming business he acquired,” says Stanley.

Today, Stanley runs the wholesale end of Fleishman, while his wife, Tricia, works behind the front counter, as she enjoys dealing with the store’s retail customers. Frequently, their dog, Chiclet, a Yorkie-terrier rescue, charms clients.

If the couple were on the old TV show “What’s My Line?” you might guess that they were professional athletes, both being trim and tan. In fact, their favorite pastime, indeed, obsession, is sailing. This past summer, they sailed to Martha’s Vineyard and back, one of the few vacations they allow themselves.

“Late summer is when the Mummies come in to buy pieces for their costumes,” explains Tricia. “Our busiest seasons are fall and spring.” Since Harry started stocking his car trunk with cloth, the business has traveled a long road, with many peaks and valleys. “Between 2008 and 2010, things were tough,” admits Stanley.

As a youngster, he helped out in the store. “After I graduated from Central High, I went to C.W. Post in New York, where I studied psychology and then taught special education.” He met Tricia, who is from Long Island, in 1974, and they married two years later. “I also studied psychology and taught special education for eight years,” says Tricia. “I was going to be a clinical psychologist.” They lived in New York for several years, but moved back to Philadelphia in 1980 to help Harry and Sylvia run the business. “We didn’t see it as a sacrifice, because for Stanley and me, family is more important than anything else.”



**Tricia and Stanley Fleishman**

Speaking of family, four years ago, Tricia donated a kidney to her sister-in-law, Wendy Fleishman, a well-known New York attorney. “I don’t mind talking about it, because I believe more people should donate organs,” says Tricia. “When you consider the suffering that so many people endure, it doesn’t seem much of a sacrifice to make.” She will gladly discuss her experience with people considering organ donation “because it helped me to talk to other people.” After only two weeks of slight discomfort, Tricia was back at work.

Until last year, Fleishman was located a block away on Monroe Street. Then Stanley and Tricia

moved to their current address at 749 South 4th Street. They also have a warehouse in South Philadelphia. They acknowledge that Fabric Row is a shadow of its former self — down to only a dozen stores from its heyday 20 to 30 years ago. “The tailor trade has been depleted,” Stanley mourns. “But we have many loyal customers. I sell to about 200 small manufacturers across the county. Tricia explains that more and more young people are savvy and hip. “They come into the store and buy items to make their own creations, which they sell on Etsy, Pinterest, eBay, Instagram and Facebook. Schools no longer offer sewing and home economic classes, but kids have lots of ability and are very creative. They have been a boon to our business.”

The couple’s son Joshua, 27, who earned a master’s degree in sports management, joined the business and is very knowledgeable about handling social media. Their daughter Dara is a Philadelphia school teacher who volunteers at the Pennsylvania SPCA (where she found Chiclet). She helps out in her spare time, so Stanley and Tricia have no fears for the future of Fleishman.

“We all love dealing with customers,” says Tricia. “We are people people, and Fleishman is a neighborhood establishment. Customer service is our Number One priority.” While the Fleishmans don’t have much time to enjoy the attractions of Society Hill, they do enjoy eating out at Famous Deli, the Whetstone Tavern and Villa de Roma. And, speaking of food, they offer Chiclet a tiny biscuit.

**Jane Biberman**, former editor of *Inside Magazine*, is a freelance writer who has contributed to a variety of publications.



# BANK LOCAL



**GO ANYWHERE CHECKING**

Apply online today,  
it's easy!

Falls Flowers  
Peicha Chang,  
President & Owner



**East River Bank**

(267) 295-6420  
[EastRiverBank.com](http://EastRiverBank.com)



Christopher P. McGill, President & CEO

**EAST FALLS | ROXBOROUGH | OLD CITY (36 North 3rd Street)**

**EVERY ALLERGY IS  
DIFFERENT**



**ALLERGY & ASTHMA**

**ALLERGY & ASTHMA  
SPECIALISTS<sup>SM</sup>  
CAN TREAT YOURS**

**THE AREA'S MOST TRUSTED  
SOURCE FOR ALLERGY EXTRACT**

Our 12 Fellowship-trained, Board Certified Allergists are highly experienced in prescribing safe, effective allergy extracts - **formulated specifically for each patient.**

All extracts are produced in our onsite lab under allergist's supervision.



**1-800-86COUGH**

**AllergyAndAsthmaWellness.com**

**ESTATE HOMES**



**PARC RITTENHOUSE**

**The Estate Homes at Parc Rittenhouse:**

The Estate Homes at Parc Rittenhouse is the last chance to create a custom home on Rittenhouse Square. These spaces are all part of approximately 52,000 saleable square feet on the second and third floors of Parc Rittenhouse, which will be developed into +/-24 custom homes sold unfinished allowing you to customize your own residence. Home sizes are from 1000 - 6000 square feet and priced for the unfinished space per square feet from 600. For additional information please visit [www.estatehomesatparc.com](http://www.estatehomesatparc.com).

**THE ALISON**

**The Alison:**

The Alison is a brand new luxury rental building on the north side of Rittenhouse Square. With only 19 homes, this boutique building is one of the most exclusive addresses on Rittenhouse Square. Homes at The Alison feature European Oak floors throughout; marble bathrooms; and kitchens with designer stainless steel appliances, Caesarstone quartz countertops, and Downsview cabinetry. The interior of these homes were designed by Joanne Hudson and Associates and priced from \$2,650 - \$8,500 per month. Residents of The Alison enjoy a 24-hour doorman.



**Allan Domb Real Estate**

PHILADELPHIA'S LARGEST SELLING CONDOMINIUM REALTOR® WE COOPERATE WITH ALL REALTORS®  
1845 Walnut Street, Suite 2200, Philadelphia, PA 19103 Phone: 215.545.1500 [allandomb.com](http://allandomb.com) [domb@allandomb.com](mailto:domb@allandomb.com)